

3302 ws/1 North Laurel Park

WATER AND SEWER MAIN EXTENSIONS NORTH LAUREL PARK

LOTS 3-15, BLOCK "L"
LOTS 20-32, BLOCK "P"
LOTS 1-13, BLOCK "Q"
LOTS 15-28, BLOCK "K"
6th ELECTION DISTRICT
HOWARD COUNTY, MARYLAND
CONTRACT NO. 24-3302-D

GENERAL NOTES

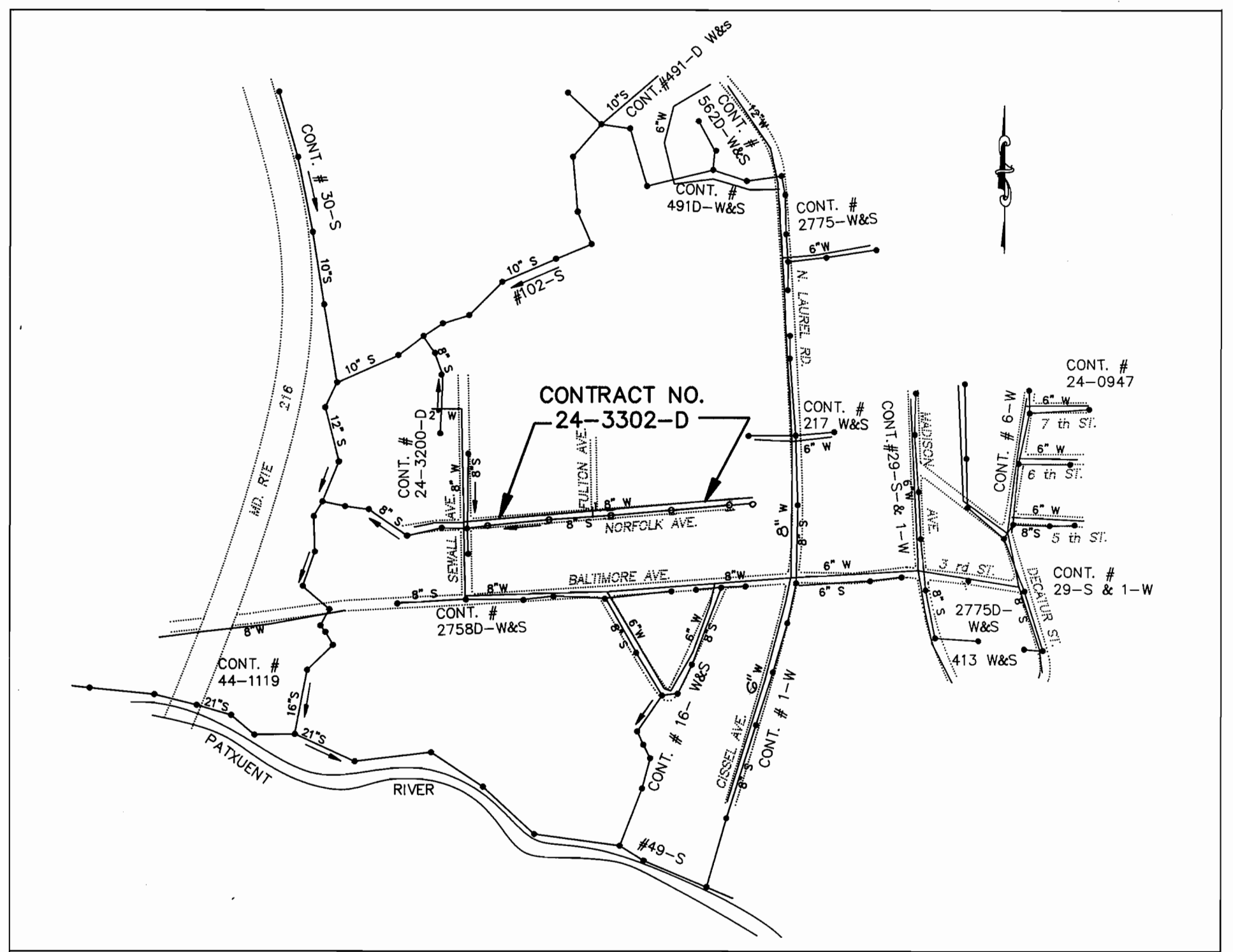
- APPROXIMATE LOCATION OF EXISTING MAINS ARE SHOWN. THE CONTRACTOR SHALL TAKE ALL NECESSARY PRECAUTIONS TO PROTECT EXISTING MAINS AND SERVICES AND MAINTAIN UNINTERRUPTED SUPPLY. ANY DAMAGE INCURRED SHALL BE REPAIRED IMMEDIATELY TO THE SATISFACTION OF THE ENGINEER AT THE CONTRACTOR'S EXPENSE.
- ALL HORIZONTAL CONTROLS ARE BASED ON MARYLAND STATE COORDINATES.
- ALL VERTICAL CONTROLS ARE BASED ON U.S.G.S. DATUM.
- ALL PIPE ELEVATIONS SHOWN ARE INVERT ELEVATIONS.
- CLEAR ALL UTILITIES BY MINIMUM OF 6". CLEAR ALL POLES BY 2'-0" MINIMUM OR TUNNEL AS REQUIRED. THE OWNER HAS CONTACTED THE UTILITY COMPANIES AND HAS MADE ARRANGEMENTS FOR BRACING OF POLES AS SHOWN ON THE DRAWINGS. IN THE EVENT THE CONTRACTOR'S WORK REQUIRES THE BRACING OF ADDITIONAL POLES, ANY COST INCURRED BY THE OWNER FOR BRACING OF ADDITIONAL POLES OR DAMAGES SHALL BE DEDUCTED FROM MONEY OWED TO THE CONTRACTOR. THE CONTRACTOR SHALL COORDINATE WITH THE UTILITY COMPANIES TO SCHEDULE THE BRACING OF THE POLES.
- FOR DETAILS NOT SHOWN ON THE DRAWINGS, AND FOR MATERIALS AND CONSTRUCTION METHODS, USE HOWARD COUNTY DESIGN MANUAL, VOLUME IV, STANDARD SPECIFICATIONS AND DETAILS FOR CONSTRUCTION (LATEST EDITION). THE CONTRACTOR SHALL HAVE A COPY OF VOLUME IV ON THE JOB.
- WHERE TEST PITS HAVE BEEN MADE ON EXISTING UTILITIES, THEY ARE NOTED BY THE SYMBOL AT THE LOCATION OF THE TEST PIT. A NOTE OR NOTES CONTAINING THE RESULTS OF THE TEST PIT OR PITS IS INCLUDED ON THE DRAWINGS. EXISTING UTILITIES IN THE VICINITY OF THE PROPOSED WORK FOR WHICH TEST PITS HAVE NOT BEEN DUG SHALL BE LOCATED BY THE CONTRACTOR TWO WEEKS IN ADVANCE OF CONSTRUCTION OPERATIONS AT HIS OWN EXPENSE.
- CONTRACTOR SHALL NOTIFY THE FOLLOWING UTILITIES OR AGENCIES AT LEAST FIVE WORKING DAYS BEFORE STARTING WORK SHOWN ON THESE PLANS:
STATE HIGHWAY ADMINISTRATION: 531-5533
BALTIMORE GAS & ELECTRIC CO.-CONTRACTOR SERVICES: 850-4620
BALTIMORE GAS & ELECTRIC CO. UNDERGROUND DAMAGE CONTROL: 787-9068
BALTIMORE GAS & ELECTRIC CO. TROUBLE SHOOTING: 298-9001
MISS UTILITY: 1-800-257-7777
COLONIAL PIPELINE COMPANY: 795-1390
BUREAU OF UTILITIES, HOWARD COUNTY DEPARTMENT OF PUBLIC WORKS: 313-4900
C & P TELEPHONE COMPANY: 1-800-257-7777
- TREES AND SHRUBS ARE TO BE PROTECTED FROM DAMAGE TO MAXIMUM EXTENT. TREES AND SHRUBS LOCATED WITHIN THE CONSTRUCTION STRIP ARE NOT TO BE REMOVED OR DAMAGED BY THE CONTRACTOR.
- CONTRACTOR SHALL REMOVE TREES, STUMPS AND ROOTS ALONG LINE OF EXCAVATION. PAYMENT FOR SUCH REMOVAL SHALL BE INCLUDED IN THE UNIT PRICE BID FOR CONSTRUCTION OF THE MAIN.
- THE CONTRACTOR SHALL NOTIFY THE BUREAU OF HIGHWAYS, HOWARD COUNTY, AT (410) 313-2450 AT LEAST FIVE WORKING DAYS BEFORE ANY OPEN CUT OF ANY COUNTY ROAD OR BORING/JACKING OPERATION IN COUNTY ROADS FOR LAYING WATER/SEWER MAINS OR HOUSE CONNECTIONS. THE APPROVAL OF THESE DRAWINGS WILL CONSTITUTE COMPLIANCE WITH DPW REQUIREMENTS PER SECTION 18.114(a) OF THE HOWARD COUNTY CODE.

SHEET INDEX	
NO	DESCRIPTION
1	TITLE SHEET
2	PLAN OF WATER MAIN & SEWER MAIN
3	PROFILE OF WATER MAIN & SEWER MAIN

QUANTITIES				
ITEM	QUANTITIES EST'D	AS-BUILT		
		QUANTITIES	TYPE	SUPPLIER/MANUFACTURER
8" W D.I.P.	1310 L.F.	1314 L.F.	CL 52 (S.P.C.)	ATLANTIC STATES
3/4" WHC	1171 L.F.	1231 L.F.	K COPPER	CAMBRIDGE-LEE/WATER PRO
8" V	3 EACH	3 EA.	KELJED (GATE)	MUNICIPAL CONTRACTORS SALES
6" V	2 EACH	2 EA.	"	"
FIRE HYDRANT	2 EACH	2 EA.	KELJED (GATE)	"
8" S	1377 L.F.	1314 L.F.	SDR 35 (PVC)	J.M. MFR./WATER PRO
4" SHC	1157 L.F.	1407 L.F.	"	"
4" MANHOLE	5 EACH	5 EA.	4' PRECAST	ATLANTIC PRECAST
4' MANHOLE	1 EACH	1 EA.	BRICK	"
8" D.I.P.	102 L.F.	97 L.F.	CL 52 D.I.P.	GRIFFIN PIPE PROD.
8" PVC	112 L.F.	111 L.F.	SDR 35 PVC	J.M. MFR./WATER PRO.
4" SHC	175 L.F.	171 L.F.	"	"
3/4" WHC	161 L.F.	173 L.F.	K COPPER	HALSTEAD CO./WATER PRO

NAME OF UTILITY CONTRACTOR: JACOBI SITE SPECIALISTS INC.

CHECKBOX:
AS-BUILT DATE: 12-28-94
SURVEY AND DRAFTING DIVISION



VICINITY MAP
SCALE: 1" = 600'

WATER AND SEWER CODE COUNTY USE WATER NO. : <u> C05 </u> TEST GRADIENT : <u> 550 </u> SEWER NO.S : <u> 7140000 </u>	TYPE OF BUILDING: RESIDENTIAL DRAINAGE AREA : PATUXENT TREATMENT PLANT: LITTLE PATUXENT WATER QUALITY MANAGEMENT CENTER: SAVAGE, HOWARD CO., MD NO. OF LOTS : 53 NO. OF SHC : 53 NO. OF WHC : 53
--	---

BENCH MARK DATA

HOWARD COUNTY MON. # 1741003
CONC. MON. ON WEST SIDE
OF RTE. 216. AND 0.2' BELOW
SURFACE. ELEV.=198.395

HOWARD COUNTY MON. #1741002-R
CONC. MON. ON TOP OF BANK
EAST OF EAST EDGE MAC. OF
RTE. 216. FLUSH WITH SURFACE.
ELEV.=197.368

WATER NOTES

- ALL WATER MAINS TO BE D.I.P. CLASS 52 UNLESS OTHERWISE NOTED.
- TOPS OF ALL WATER MAINS TO HAVE A MINIMUM OF 3-1/2' COVER UNLESS OTHERWISE NOTED.
- VALVES ADJACENT TO TEES SHALL BE STRAPPED TO TEES.
- ALL FITTINGS SHALL BE BUTTRESSED OR ANCHORED WITH CONCRETE IN ACCORDANCE WITH THE STANDARD DETAILS UNLESS OTHERWISE PROVIDED FOR ON THE DRAWINGS.
- FIRE HYDRANTS SHALL BE SET TO THE BURY LINE ELEVATIONS SHOWN ON THE DRAWINGS. ALL FIRE HYDRANTS SHALL BE STRAPPED AND BUTTRESSED WITH CONCRETE IN ACCORDANCE WITH STANDARD DETAILS. SOIL AROUND THE FIRE HYDRANT SHALL BE COMPACTED IN ACCORDANCE WITH SECTION 1000 AND 1005 OF THE STANDARD SPECIFICATIONS.
- THE CONTRACTOR SHALL NOT OPERATE ANY WATER MAIN VALVES ON THE EXISTING WATER SYSTEM.
- ALL WATER HOUSE CONNECTIONS SHALL BE FOR INSIDE METER SETTINGS, UNLESS OTHERWISE NOTED ON THE PLANS OR IN THE SPECIFICATIONS.
- ALL WATER HOUSE CONNECTIONS SHALL BE LOWERED AT THE PROPOSED SWALE LOCATIONS TO PROVIDE A MINIMUM OF 3/8" OF COVER.

SEWER NOTES

- ALL SEWER MAINS SHALL BE D.I.P., R.C.P., V.C.P.X., R.C.C.P., AND P.V.C. UNLESS OTHERWISE NOTED.
- ALL MANHOLES SHALL BE 4'-0" INSIDE DIAMETER UNLESS OTHERWISE NOTED.
- FORCE MAINS SHALL BE D.I.P. ONLY.
- MANHOLES SHOWN WITH 12" AND 16" WALLS ARE FOR BRICK MANHOLES ONLY.
- MANHOLES DESIGNATED W.T. IN PLAN AND PROFILE SHALL HAVE WATER-TIGHT FRAME AND COVERS STANDARD DETAIL G5.52. WHERE WATERTIGHT MANHOLE FRAME AND COVER IS USED, SET TOP OF FRAME 1'-6" ABOVE FINISHED GRADE UNLESS OTHERWISE NOTED ON THE DRAWINGS.
- HOUSE(S) WITH THE SYMBOL "C.N.S." INDICATES THAT CELLAR CANNOT BE SERVED.

SEDIMENT CONTROL MEASURES FOR THIS CONTRACT WILL BE IMPLEMENTED IN ACCORDANCE WITH SECTION 219 OF THE HOWARD COUNTY DESIGN MANUAL AND STANDARDS AND SPECIFICATIONS FOR SOIL EROSION AND SEDIMENT CONTROL IN DEVELOPING AREAS AND ALSO AS SHOWN ON THE GRADING AND SEDIMENT CONTROL PLAN (SDP-94-38).

REVIEWED FOR HOWARD COUNTY SOIL CONSERVATION DISTRICT AND MEETS TECHNICAL REQUIREMENTS.
Gabriel Ego 1/28/94
U.S. SOIL CONSERVATION SERVICE DATE

THIS DEVELOPMENT PLAN IS APPROVED FOR EROSION AND SEDIMENT CONTROL BY HOWARD SOIL CONSERVATION DISTRICT.

APPROVED:
John R. Robertson 1/28/94
HOWARD SOIL CONSERVATION DISTRICT DATE

PLAN REFERENCE NUMBERS
SDP-94-38

DEPARTMENT OF PUBLIC WORKS
HOWARD COUNTY, MARYLAND

James J. Lee 2/2/94
DIRECTOR OF PUBLIC WORKS DATE

Paul M. Szymanski 2/2/94
CHIEF, BUREAU OF ENGINEERING DATE

Robert A. Berman 1-24-94
CHIEF, BUREAU OF UTILITIES DATE

Harold J. ... 2/2/94
CHIEF, LAND DEVELOPMENT DIVISION DATE

M
MOCHI & ASSOCIATES, INC.
ENGINEERS • SURVEYORS • PLANNERS

3300 North Ridge Road, Suite 235, Ellicott City, Maryland 21043-3350
(410) 461-0078 D.C. Metro No. (301) 621-5768

DES: YSL	CAM 4	EXTEND W/S TO SERVE 5 LOTS	5/11/98
DRN: YSL	MAZ 2	REVISIONS PER DPW REDLINES	11/3/94
CHK: CAM	YSL 2	Added 8" W Profile - Submit ORIGINALS	1/19/93
PROJ. # 93012-01	YSL 1	REVISED PER 11-22-93 COMMENTS - SUBMIT ORIGINALS	2/23/93
DATE: 11/93	BY NO.	FIRST SUBMISSION TO DPW	
		REVISION	

TITLE SHEET

600' SCALE MAP NO. 50 BLOCK NO. 3

NORTH LAUREL PARK
LOTS 3-15, BLOCK "L"; LOTS 20-32, BLOCK "P"
LOTS 1-13, BLOCK "Q" AND LOTS 15-28, BLOCK "K"

CONTRACT NO. 24-3302-D
ELECTION DISTRICT NO. 6
HOWARD COUNTY, MARYLAND

SCALE AS SHOWN

SHEET 1 OF 3

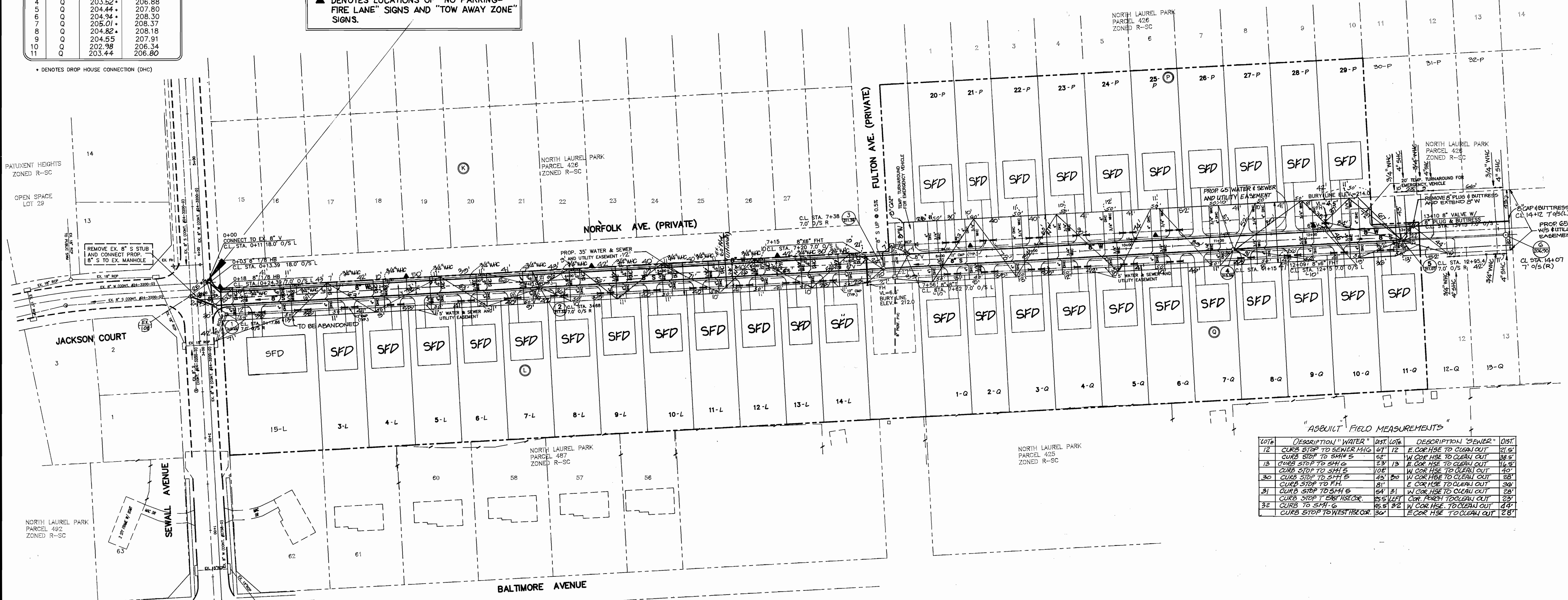
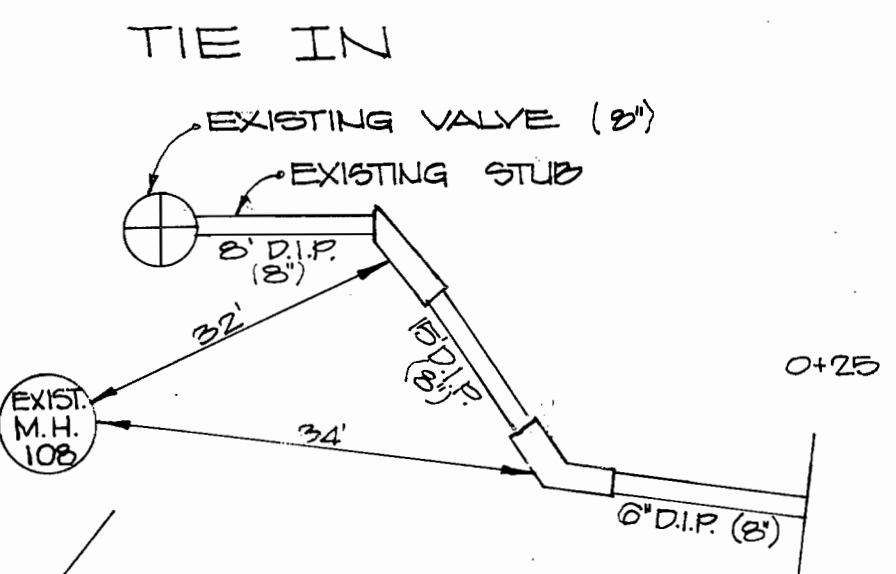
AS - BUILT

AS - BUILT

3302 ws/2 North Laurel Park

MIN. CELLAR ELEVATION			
LOT #	BLOCK	SEWER INVERT @ E.S.M.T.	MIN. CELLAR ELEVATION
1	L	199.44*	202.80
2	L	203.20*	206.54
3	L	205.34*	208.68
4	L	208.97*	212.33
5	L	209.40*	212.76
6	L	208.70*	212.06
7	L	207.90*	211.26
8	L	207.38*	210.74
9	L	206.39*	209.75
10	L	204.69*	208.05
11	L	203.70*	207.06
12	L	202.69*	206.05
13	L	201.79*	205.15
14	L	199.99*	204.66
20	P	203.49*	207.79
21	P	203.90*	208.20
22	P	204.76*	209.06
23	P	206.65*	209.99
24	P	207.72*	211.06
25	P	208.16*	211.50
26	P	208.15*	211.49
27	P	206.17*	209.51
28	P	203.66*	206.56
29	P	204.02*	206.92
1	O	200.49*	203.39
2	O	200.69*	203.59
3	O	200.99*	203.84
4	O	203.52*	206.88
5	O	204.44*	207.80
6	O	204.94*	208.30
7	O	205.01*	208.37
8	O	204.82*	208.18
9	O	204.65*	207.91
10	O	202.98*	206.34
11	O	203.44*	206.80

NOTE:
▲ DENOTES LOCATIONS OF "NO PARKING-FIRE LANE" SIGNS AND "TOW AWAY ZONE" SIGNS.



"AS-BUILT" FIELD MEASUREMENTS

LOT#	DESCRIPTION "WATER"	DIST.	LOT#	DESCRIPTION "SEWER"	DIST.
12	CURB STOP TO SEWER M/H	67'	12	E. COR HSE TO CLEAN OUT	21.5'
	CURB STOP TO S.H.F. 5	58'		W. COR HSE TO CLEAN OUT	36.5'
13	CURB STOP TO S.H.F. 6	33'	13	E. COR HSE TO CLEAN OUT	11.5'
	CURB STOP TO S.H.F. 5	102'		W. COR HSE TO CLEAN OUT	40'
30	CURB STOP TO S.H.F. 5	48'	30	W. COR HSE TO CLEAN OUT	58'
	CURB STOP TO F.H.	81'		E. COR HSE TO CLEAN OUT	36'
31	CURB STOP TO S.H.F. 5	54'	31	W. COR HSE TO CLEAN OUT	58'
	CURB STOP TO EAST RECORD	35.5'		COR PERCH TO CLEAN OUT	133'
32	CURB TO S.H.F. 6	95.5'	32	W. COR HSE TO CLEAN OUT	44'
	CURB STOP TO WEST RECORD	30'		E. COR HSE TO CLEAN OUT	28'

PLAN VIEW
SCALE: 1"=50'

ENGINEER
MILDENBERG, MOCHI & ASSOCIATES, INC.
3300 NORTH RIDGE ROAD, SUITE 235
ELLCOTT CITY, MARYLAND 21043-3350
(410)461-0078

OWNER/DEVELOPER
CORNERSTONE HOMES, INC.
6571 HUNTSVILLE DRIVE
ELKRIDGE, MARYLAND 21227
(410) 379-0157

DEPARTMENT OF PUBLIC WORKS
HOWARD COUNTY, MARYLAND
2/2/94
2/10/94

MILDENBERG, MOCHI & ASSOCIATES, INC.
ENGINEERS • SURVEYORS • PLUMBERS
3300 North Ridge Road, Suite 235, Ellicott City, Maryland 21043-3350
(301) 461-0078 D.C. Metro No. (301) 621-5768

DES.	YSL	K.O.I.	5	AS-BUILT CONDITIONS ADDED TO PLAN	10/2/99
		CAM	4	EXTEND W/S TO SERVE 5 LOTS	5/11/95
		WAZ	2	REVISIONS PER DPN REMAINS	1/12/94
		YSL	2	Added 8" W on Plan & Profile - Submit Original	1/19/93
		YSL	1	REVISED PER 11-22-93 COMMENTS-SUBMIT ORIGINALS	12/23/92
		YSL	0	FIRST SUBMISSION TO DPN	

WATER AND SEWER MAIN EXTENSION PLAN

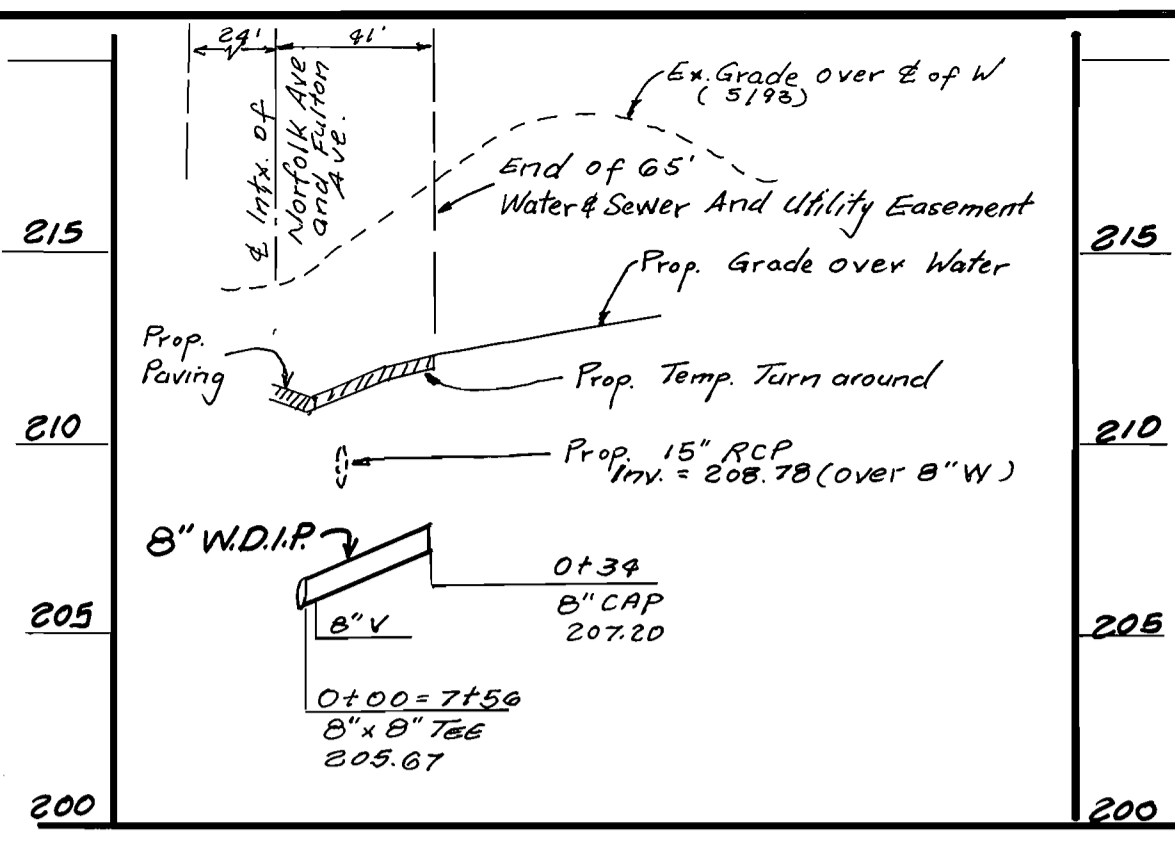
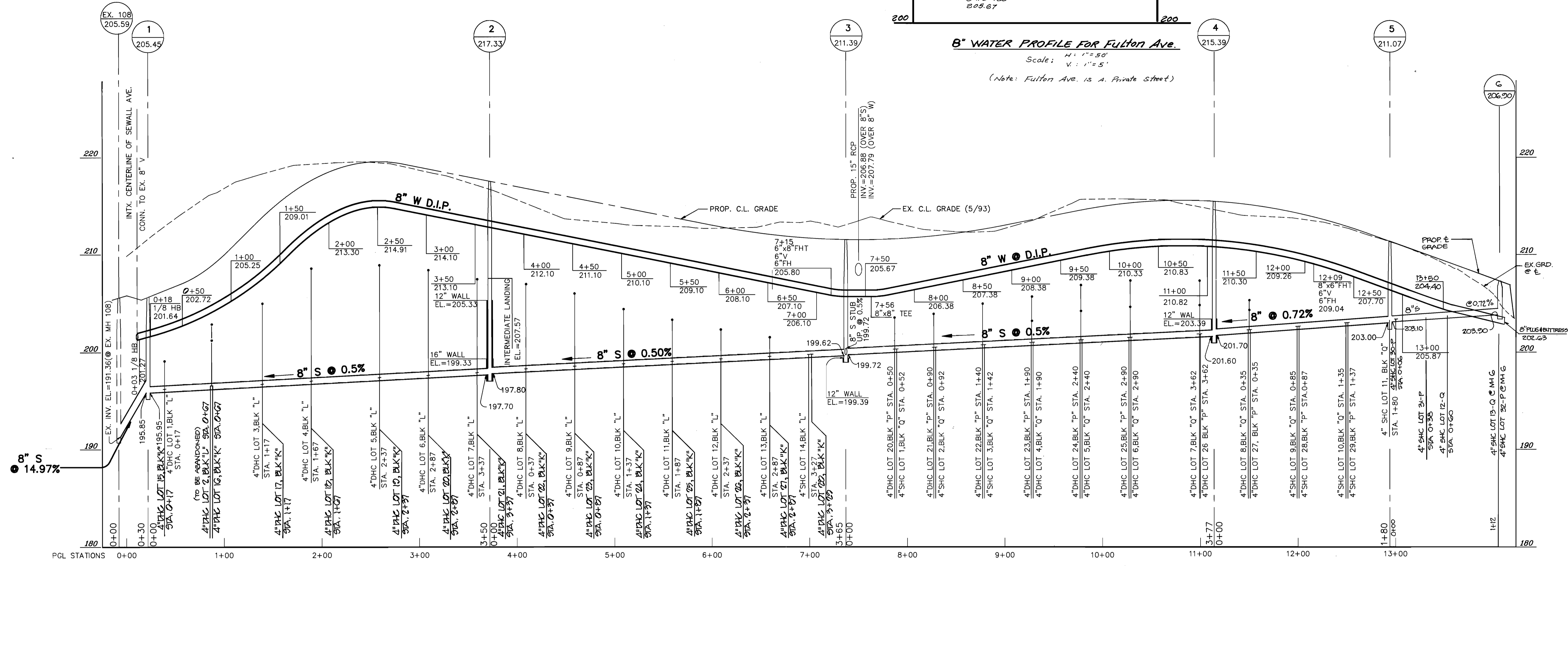
NORTH LAUREL PARK
LOTS 3-15, BLOCK "L"; LOTS 20-32, BLOCK "P"
LOTS 1-13, BLOCK "Q" AND LOTS 15-20, BLOCK "K"
CONTRACT NO. 24-3302-D
ELECTION DISTRICT NO. 6
HOWARD COUNTY, MARYLAND

SCALE
1"=50'
SHEET
2 OF 3

ws/3 North Laurel Park

3302

AS-BUILT

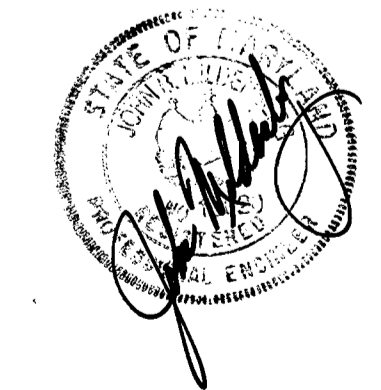


WATER AND SEWER MAIN PROFILE FOR NORFLOK AVE. (PRIVATE STREET)

SCALE: H: 1"=50'
V: 1"=5'

ENGINEER
MILDENBERG, MOCHI & ASSOCIATES, INC.
3300 NORTH RIDGE ROAD, SUITE 235
ELLICOTT CITY, MARYLAND 21043-3350
(410) 461-0078

OWNER/DEVELOPER
CORNERSTONE HOMES, INC.
6571 HUNTSVILLE DRIVE
ELK RIDGE, MARYLAND 21227
(410) 379-0157



CONTRACT NO. 24-3302-D
NORTH LAUREL PARK
LOTS 3-15, BLOCK "L"
LOTS 20-32, BLOCK "P"
LOTS 1-13, BLOCK "Q"
LOTS 15-20, BLOCK "K"
WATER AND SEWER MAIN EXTENSION
HOWARD COUNTY, MARYLAND

DEPARTMENT OF PUBLIC WORKS
HOWARD COUNTY, MARYLAND
DIRECTOR OF PUBLIC WORKS
DATE: 2/2/04
CHIEF, BUREAU OF ENGINEERING
DATE: 2/2/04
CHIEF, LAND DEVELOPMENT DIVISION
DATE: 2/2/04

MILDENBERG, MOCHI & ASSOCIATES, INC.
ENGINEERS • SURVEYORS • PLANNERS
3300 North Ridge Road, Suite 235, Ellicott City, Maryland 21043-3350
(301) 461-0078 D.C. Metro No. (301) 621-5768

DATE	BY	NO.	REVISION	DATE
11/93	YSL	0	FIRST SUBMISSION TO DPW	
	YSL	1	REVISED PER 11/22/93 COMMENTS - SUBMIT ORIGINALS	1/1/94
	YSL	2	ADD 8" WATER PROFILE - SUBMIT ORIGINALS	1/1/94
	MAZ	3	REVISIONS PER DPW REDLINES	1/13/94
	CAM	4	EXTEND V/S TO SERVE 5 LOTS	5/11/95

WATER AND SEWER MAIN EXTENSION PROFILE
600' SCALE MAP NO. 50 BLOCK NO. 3

NORTH LAUREL PARK
LOTS 3-15, BLOCK "L"; LOTS 20-32, BLOCK "P"
LOTS 1-13, BLOCK "Q" AND LOTS 15-20, BLOCK "K"
CONTRACT NO. 24-3302-D
ELECTION DISTRICT NO. 6
HOWARD COUNTY, MARYLAND

SCALE
AS SHOWN
SHEET
3 OF 3