

SEDIMENT CONTROL NOTES

- FOR SEDIMENT CONTROL FOR THIS CONTRACT, SEE THE APPROVED ROAD CONSTRUCTION PLANS.
- MATERIALS FROM TRENCH EXCAVATION TO BE PLACED ON UPHILL SIDE TRENCH.
- CONTRACTOR TO BACKFILL, COMPACT AND STABILIZE IMMEDIATELY AFTER INSTALLATION OF PIPE. NO TRENCHES WILL BE LEFT OPEN AT THE END OF EACH DAY, EXCEPT THAT PORTION WHERE WORK HAS STOPPED.
- ANY SEDIMENT CONTROL FACILITIES ENCOUNTERED DURING PIPE CONSTRUCTION TO BE RETURNED TO ORIGINAL CONDITION IMMEDIATELY UPON COMPLETION OF THAT PORTION OF WORK.
- SEDIMENT CONTROL MEASURES FOR THIS CONTRACT WILL BE IMPLEMENTED IN ACCORDANCE WITH SECTION 219 OF THE HOWARD COUNTY STANDARD SPECIFICATION AND AS PER ROAD CONSTRUCTION PLANS. SDP-93-73, F-93-51

QUANTITIES

ITEMS	QUANTITIES		AS-BUILT	
	ESTIMATED	QUANTITIES	TYPE	MANUFACTURER / SUPPLIER
8" x 8" TEE	2	2	IRON	TYLER PIPE / WATER PRO
8" x 8" TEE	4	4	IRON	" " " "
8" VALVE	2	2	MECHANICAL JOINT	MOELLER CO., WATER PRO
8" VALVE	4	4	" " " "	" " " "
FIRE HYDRANT	4	4	" " " "	" " " "
11.25" BEND	1	2	IRON	TYLER PIPE / WATER PRO
22.50" BEND	4	4	IRON	" " " "
45" BEND	6	6	IRON	" " " "
8" WATER	1866 L.F.	1782 L.F.	D.I.P. CL 92	ATLANTIC ST., WATER PRO
8" WATER	41 L.F.	41 L.F.	D.I.P. CL 92	" " " "
1 1/2" H.C.	876 L.F.	828 L.F.	TYPE K 80PT	HALESTAD CO., WATER PRO
1" H.C.	179 L.F.	220 L.F.	" " " "	" " " "
8" SEWER	114 L.F.	114 L.F.	PVC	J.M. PIPE / WATER PRO
MAN HOLE	1	1	PRE-CAST	HYDRO CONDUIT / WATER PRO
9.H.C.	67 L.F.	71 L.F.	PVC	J.M. PIPE / WATER PRO

NAME OF UTILITY CONTRACTOR: PLEASANT EXCAVATING

SURVEY AND DRAFTING DIVISION AS-BUILT DATE: 1-10-94

SDP-93-73
F-93-51

REVIEWED FOR HOWARD COUNTY SOIL CONSERVATION DISTRICT AND MEETS TECHNICAL REQUIREMENTS.

James M. Allen 5/20/93
SOIL CONSERVATION SERVICE DATE

THIS DEVELOPMENT PLAN IS APPROVED FOR EROSION AND SEDIMENT CONTROL BY HOWARD SOIL CONSERVATION DISTRICT.

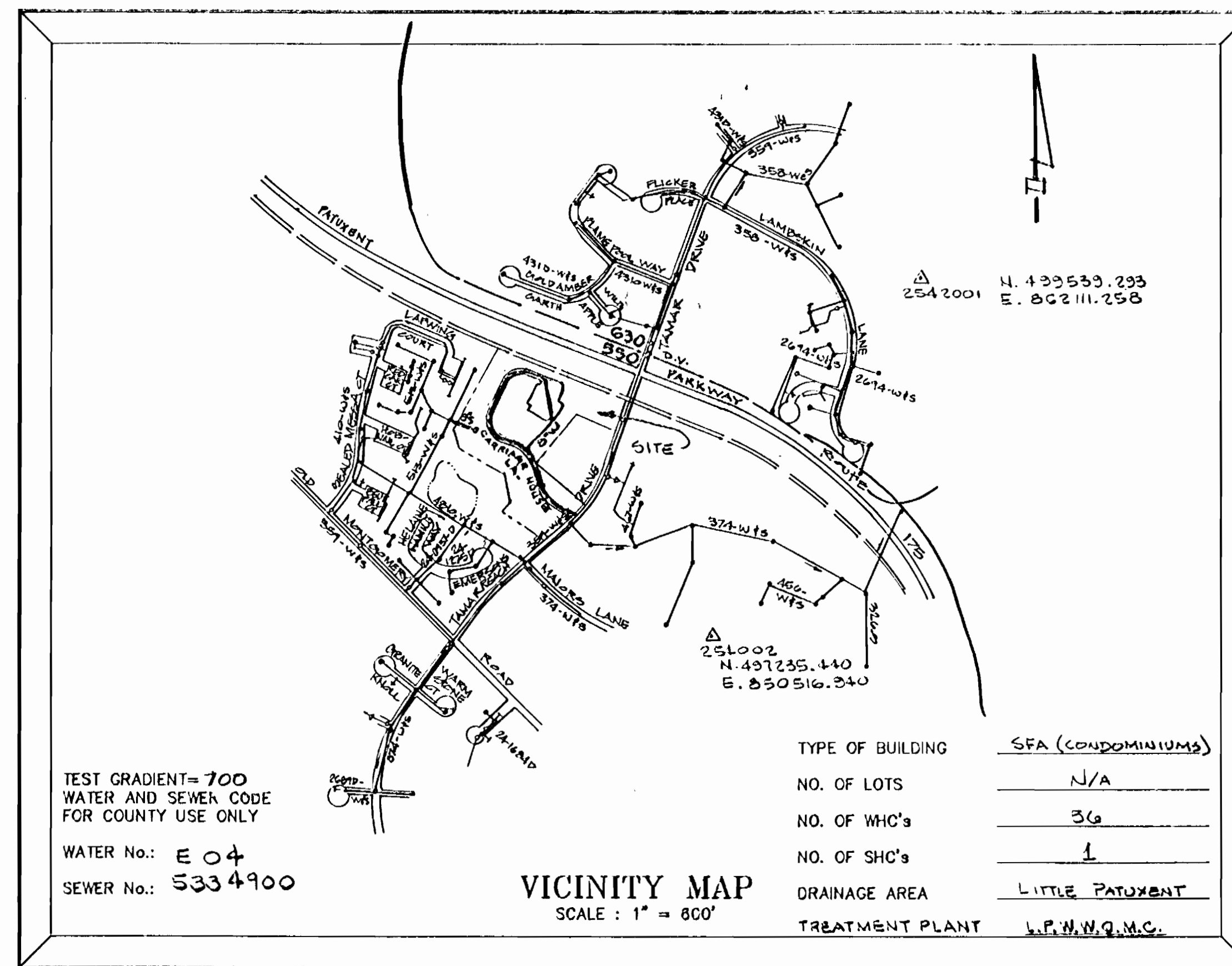
APPROVED:
Mark Z. Allen 5/20/93
HOWARD SOIL CONSERVATION DISTRICT DATE

GENERAL NOTES

- APPROXIMATE LOCATION OF EXISTING MAINS ARE SHOWN. THE CONTRACTOR SHALL TAKE ALL NECESSARY PRECAUTIONS TO PROTECT EXISTING MAINS AND SERVICES AND MAINTAIN UNINTERRUPTED SUPPLY. ANY DAMAGE INCURRED SHALL BE REPAIRED IMMEDIATELY TO THE SATISFACTION OF THE ENGINEER AT THE CONTRACTOR'S EXPENSE.
- ALL HORIZONTAL CONTROLS ARE BASED ON MARYLAND STATE COORDINATES.
- ALL VERTICAL CONTROLS ARE BASED ON U.S.O.S. DATUM.
- ALL PIPE ELEVATIONS SHOWN ARE INVERT ELEVATIONS.
- CLEAR ALL UTILITIES BY A MINIMUM OF 6". CLEAR ALL POLES BY 2'-0" MINIMUM OR TUNNEL AS REQUIRED. THE OWNER HAS CONTRACTED THE UTILITY COMPANIES AND HAS MADE ARRANGEMENTS FOR BRACING OF POLES AS SHOWN ON THE DRAWINGS. IN THE EVENT THE CONTRACTOR'S WORK REQUIRES THE BRACING OF ADDITIONAL POLES, ANY COST INCURRED BY THE OWNER FOR BRACING OF ADDITIONAL POLES OR DAMAGES SHALL BE DEDUCTED FROM MONEY OWED THE CONTRACTOR. THE CONTRACTOR SHALL COORDINATE WITH THE UTILITY COMPANIES TO SCHEDULE BRACING OF THE POLES.
- FOR DETAILS NOT SHOWN ON THE DRAWINGS, AND FOR MATERIALS AND CONSTRUCTION METHODS, USE HOWARD COUNTY DESIGN MANUAL, VOLUME FOUR, STANDARD SPECIFICATIONS AND DETAILS FOR CONSTRUCTION. THE CONTRACTOR SHALL HAVE A COPY OF VOLUME FOUR ON THE JOB.
- WHERE TEST PITS HAVE BEEN MADE ON EXISTING UTILITIES, THEY ARE NOTED BY THE SYMBOL AT THE LOCATION OF THE TEST PIT. A NOTE OR NOTES CONTAINING THE RESULTS OF THE TEST PIT OR PITS IS INCLUDED ON THE DRAWINGS. EXISTING UTILITIES IN THE VICINITY OF THE PROPOSED WORK FOR WHICH TEST PITS HAVE NOT BEEN DUG SHALL BE LOCATED BY THE CONTRACTOR TWO WEEKS IN ADVANCE OF CONSTRUCTION OPERATIONS AT HIS OWN EXPENSE.
- CONTRACTOR SHALL NOTIFY THE FOLLOWING UTILITIES OR AGENCIES AT LEAST FIVE WORKING DAYS BEFORE STARTING WORK SHOWN ON THIS PLANS:
 - STATE HIGHWAY ADMINISTRATION : 531-5533
 - BALTIMORE GAS & ELECTRIC CO. - CONTRACTOR SERVICES : 850-4620
 - UNDERGROUND DAMAGE CONTROL : 787-9068
 - TROUBLE SHOOTING : 298-9001
 - MISS UTILITY : 1-800-257-7777
 - COLONIAL PIPELINE COMPANY : 793-1390
 - BUREAU OF UTILITIES, HOWARD COUNTY DEPARTMENT OF PUBLIC WORKS : 313-4900
- TREES AND SHRUBS ARE TO BE PROTECTED FROM DAMAGE TO MAXIMUM EXTENT. TREES AND SHRUBS LOCATED WITHIN THE CONSTRUCTION STRIP ARE NOT TO BE REMOVED OR DAMAGE BY THE CONTRACTOR.
- CONTRACTOR SHALL REMOVE TREES, STUMPS AND ROOTS ALONG LINE OF EXCAVATION. PAYMENT FOR SUCH REMOVAL SHALL BE INCLUDED IN THE UNIT PRICE BID FOR CONSTRUCTION OF THE MAIN.
- ALL WATER MAINS TO BE D.I.P. CLASS 92 UNLESS OTHERWISE NOTED.
- TOPS OF ALL WATER MAINS TO HAVE A MINIMUM OF 3-1/2' COVER UNLESS OTHERWISE NOTED.
- VALVES ADJACENT TO TEES SHALL BE STRAPPED TO TEES.
- ALL FITTINGS SHALL BE BUTTRESSED OR ANCHORED WITH CONCRETE IN ACCORDANCE WITH THE STANDARD DETAILS UNLESS OTHERWISE PROVIDED FOR ON THE DRAWINGS.
- FIRE HYDRANTS SHALL BE SET TO THE BURY LINE ELEVATIONS SHOWN ON THE DRAWINGS. ALL FIRE HYDRANTS SHALL BE RESTRAINED AND BUTTRESSED WITH CONCRETE IN ACCORDANCE WITH THE STANDARD DETAILS. SOIL AROUND THE FIRE HYDRANT SHALL BE COMPACTED IN ACCORDANCE WITH SECTION 1000 AND 1005 OF THE STANDARD SPECIFICATIONS.
- THE CONTRACTOR SHALL NOT OPERATE ANY WATER MAIN VALVES ON THE EXISTING WATER SYSTEM.
- ALL WATER HOUSE CONNECTIONS SHALL BE FOR INSIDE METER SETTING, UNLESS OTHERWISE NOTED ON THE PLANS OR IN THE SPECIFICATIONS.
- WATER MAINS OR WATER HOUSE CONNECTION LINES MUST BE PLACED SO AS TO HAVE AT LEAST ONE (1) FOOT SEPARATION FROM THE SEWER MAIN OR SEWER HOUSE CONNECTION AS THEY PASS ABOUT IT.
- MANHOLES DESIGNATED W.T. IN PLAN AND PROFILE SHALL HAVE WATERTIGHT FRAME AND COVERS STANDARD DETAIL G8.52. WHERE WATERTIGHT MANHOLE FRAME AND COVER IS USED, SET TOP OF FRAME 1'-6" ABOVE FINISHED GRADE UNLESS OTHERWISE NOTED ON THE DRAWINGS.
- ALL SEWER MAINS SHALL BE D.I.P., R.C.P., M.C.P.X., C.S.P.X., R.C.C.P., AND P.V.C. UNLESS OTHERWISE NOTED.
- THE CONTRACTOR SHALL PROVIDE A JOINT IN ALL SEWER MAINS WITHIN 2'-0" OF EXTERIOR MANHOLE WALL.
- ALL MANHOLES SHALL BE 4'-0" INSIDE DIAMETER UNLESS OTHERWISE NOTED.
- MANHOLES SHOWN WITH 12" AND 18" WALLS ARE FOR BRICK MANHOLES ONLY.
- MANHOLES LOCATED WITHIN PROPOSED ROADWAY SHALL HAVE STANDARD HEAVY TRAFFIC MANHOLE FRAME AND COVER, STANDARD DETAIL G 5.51
- ALL D.I.P. FITTINGS SHALL BE IN ACCORDANCE WITH AWWA SPECIFICATION C-153 : DUCTILE IRON COMPACT FITTINGS, 3" THROUGH 12" FOR WATER & OTHER LIQUIDS.
- ALL EXISTING STRUCTURES TO BE REMOVED.
- FORCE MAINS SHALL BE D.I.P. ONLY.
- HOUSE(S) WITH THE SYMBOL "C.N.S." INDICATES THAT THE CANNOT BE SERVED.
- THE CONTRACTOR SHALL NOTIFY THE BUREAU OF HIGHWAYS, HOWARD COUNTY AT (410) 313-2430 AT LEAST 5 WORKING DAYS BEFORE ANY OPEN CUT OF ANY COUNTY ROAD OR JACKING/BORING OPERATION FOR LAYING WATER/SEWER MAINS OR HOUSE CONNECTIONS. THE APPROVAL OF THESE WILL CONSTITUTE COMPLIANCE WITH DPW REQUIREMENTS PER SECTION 18.144 (a) OF HOWARD COUNTY CODE.

OWNER: (EXISTING HOUSE)
THOMAS & VALERIE NELSON
5970 TAMAR DRIVE
COLUMBIA, MARYLAND, 21044

DEVELOPER:
CENTEX HOMES
2127 ESPEY COURT, SUITE 210
CROFTON, MARYLAND, 21114
(301) 721 - 0034



TEST GRADIENT=700 WATER AND SEWER CODE FOR COUNTY USE ONLY	TYPE OF BUILDING	SFA (CONDOMINIUMS)
WATER No.: E 04	NO. OF LOTS	N/A
SEWER No.: 5334900	NO. OF WHC's	36
	NO. OF SHC's	1
	DRAINAGE AREA	LITTLE PATUXENT
	TREATMENT PLANT	L.P.N.W.Q.M.C.

CONTRACT No. 24-3262-D
THE GABLES AT
NEW YEARS GIFT

WATER AND SEWER
MAIN EXTENSIONS
HOWARD COUNTY,
MARYLAND
DEPARTMENT OF PUBLIC WORKS

DEPARTMENT OF PUBLIC WORKS HOWARD COUNTY, MARYLAND. <i>James M. Allen</i> 5/25/93 DIRECTOR OF PUBLIC WORKS DATE		PREPARED BY: AMERICAN ENGINEERING, INC. CIVIL ENGINEERING CONSULTANTS AND LAND PLANNER <i>James M. Allen</i> 5-25-93 DATE		DES : D.C.W. DW : DRN : W.D.F. CHK : D.S. DATE : 9-18-92		PLAN WATER AND SEWER MAINS 800'SCALE MAP NO. 36 BLOCK NO. 11		THE GABLES AT NEW YEARS GIFT LOT 3, VLR 1/9; LOTS 18, D-1 & D-3, VLR 1/8 AND LOTS B-1 THRU B-3, A RESUBDIVISION OF PARCEL B, VLR 1/8 CONTRACT No. 24-3262-D 6th ELECTION DISTRICT HOWARD COUNTY, MARYLAND		SCALE AS SHOWN SHEET 1 OF 3	
--	--	--	--	--	--	--	--	---	--	---	--

LEGEND

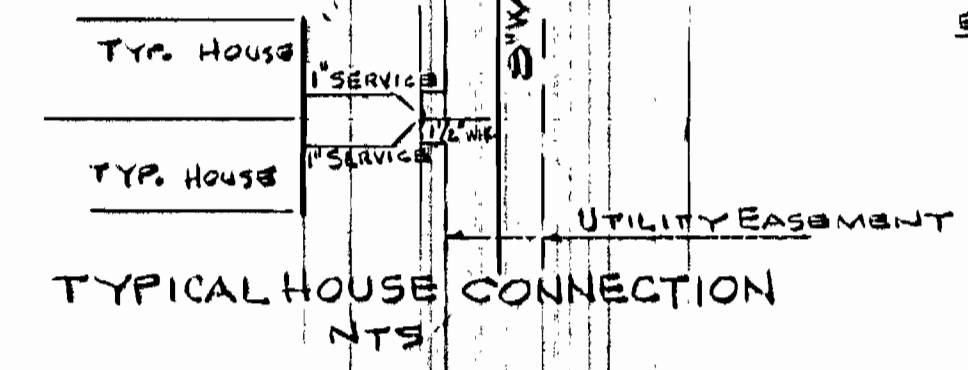
PRIVATE SEWER MAIN	---
PUBLIC SEWER MAIN	---
WATER HOUSE CONNECTION	---
PUBLIC WATER MAIN	---
STORM DRAIN	---

LITTLE PATUXENT PARKWAY
(RELOCATED MARYLAND ROUTE 175)
SHA PLATS #41572 AND #41573

- BENCH MARKS**
- BM#1 - ELEV. 407.01
CUT N.W. CORNER CONC. INLET TOP @ W. SIDE TAMAR DRIVE, 25' ± S. OF RT. 175
 - BM#2 - ELEV. 403.18
WESTERN MOST ANCHOR BOLT ON LIGHT STANDARD ON NORTHERN MOST FIRE HOUSE BUILDING LINE, 115' ± WEST OF BUILDING
 - BM#3 - ELEV. 398.91
WESTERN MOST BONNET BOLT ON FIRE HYDRANT @ WEST SIDE OF TAMAR DR. 600' ± SOUTH OF FIRE HOUSE.
 - BM#4 - ELEV. 427.41
EASTERN MOST CORNER OF BOTTOM BRICK STEP @ ENTRANCE TO PVT. RESIDENCE ON SITE.

LOT	LOCATION
10	M10-1-21' to M10-1-31' to M10-1-41'
11	M11-1-11' to M11-1-21' to M11-1-31'
12	M12-1-11' to M12-1-21' to M12-1-31'
13	M13-1-11' to M13-1-21' to M13-1-31'
14	M14-1-11' to M14-1-21' to M14-1-31'
15	M15-1-11' to M15-1-21' to M15-1-31'
16	M16-1-11' to M16-1-21' to M16-1-31'
17	M17-1-11' to M17-1-21' to M17-1-31'
18	M18-1-11' to M18-1-21' to M18-1-31'
19	M19-1-11' to M19-1-21' to M19-1-31'
20	M20-1-11' to M20-1-21' to M20-1-31'
21	M21-1-11' to M21-1-21' to M21-1-31'
22	M22-1-11' to M22-1-21' to M22-1-31'
23	M23-1-11' to M23-1-21' to M23-1-31'
24	M24-1-11' to M24-1-21' to M24-1-31'
25	M25-1-11' to M25-1-21' to M25-1-31'
26	M26-1-11' to M26-1-21' to M26-1-31'
27	M27-1-11' to M27-1-21' to M27-1-31'
28	M28-1-11' to M28-1-21' to M28-1-31'
29	M29-1-11' to M29-1-21' to M29-1-31'
30	M30-1-11' to M30-1-21' to M30-1-31'
31	M31-1-11' to M31-1-21' to M31-1-31'
32	M32-1-11' to M32-1-21' to M32-1-31'
33	M33-1-11' to M33-1-21' to M33-1-31'
34	M34-1-11' to M34-1-21' to M34-1-31'
35	M35-1-11' to M35-1-21' to M35-1-31'
36	M36-1-11' to M36-1-21' to M36-1-31'
37	M37-1-11' to M37-1-21' to M37-1-31'
38	M38-1-11' to M38-1-21' to M38-1-31'
39	M39-1-11' to M39-1-21' to M39-1-31'
40	M40-1-11' to M40-1-21' to M40-1-31'
41	M41-1-11' to M41-1-21' to M41-1-31'
42	M42-1-11' to M42-1-21' to M42-1-31'
43	M43-1-11' to M43-1-21' to M43-1-31'
44	M44-1-11' to M44-1-21' to M44-1-31'
45	M45-1-11' to M45-1-21' to M45-1-31'
46	M46-1-11' to M46-1-21' to M46-1-31'
47	M47-1-11' to M47-1-21' to M47-1-31'
48	M48-1-11' to M48-1-21' to M48-1-31'
49	M49-1-11' to M49-1-21' to M49-1-31'
50	M50-1-11' to M50-1-21' to M50-1-31'
51	M51-1-11' to M51-1-21' to M51-1-31'
52	M52-1-11' to M52-1-21' to M52-1-31'
53	M53-1-11' to M53-1-21' to M53-1-31'
54	M54-1-11' to M54-1-21' to M54-1-31'
55	M55-1-11' to M55-1-21' to M55-1-31'
56	M56-1-11' to M56-1-21' to M56-1-31'
57	M57-1-11' to M57-1-21' to M57-1-31'
58	M58-1-11' to M58-1-21' to M58-1-31'
59	M59-1-11' to M59-1-21' to M59-1-31'
60	M60-1-11' to M60-1-21' to M60-1-31'
61	M61-1-11' to M61-1-21' to M61-1-31'
62	M62-1-11' to M62-1-21' to M62-1-31'
63	M63-1-11' to M63-1-21' to M63-1-31'
64	M64-1-11' to M64-1-21' to M64-1-31'
65	M65-1-11' to M65-1-21' to M65-1-31'
66	M66-1-11' to M66-1-21' to M66-1-31'
67	M67-1-11' to M67-1-21' to M67-1-31'
68	M68-1-11' to M68-1-21' to M68-1-31'
69	M69-1-11' to M69-1-21' to M69-1-31'
70	M70-1-11' to M70-1-21' to M70-1-31'
71	M71-1-11' to M71-1-21' to M71-1-31'
72	M72-1-11' to M72-1-21' to M72-1-31'
73	M73-1-11' to M73-1-21' to M73-1-31'
74	M74-1-11' to M74-1-21' to M74-1-31'
75	M75-1-11' to M75-1-21' to M75-1-31'
76	M76-1-11' to M76-1-21' to M76-1-31'
77	M77-1-11' to M77-1-21' to M77-1-31'
78	M78-1-11' to M78-1-21' to M78-1-31'
79	M79-1-11' to M79-1-21' to M79-1-31'
80	M80-1-11' to M80-1-21' to M80-1-31'
81	M81-1-11' to M81-1-21' to M81-1-31'
82	M82-1-11' to M82-1-21' to M82-1-31'
83	M83-1-11' to M83-1-21' to M83-1-31'
84	M84-1-11' to M84-1-21' to M84-1-31'
85	M85-1-11' to M85-1-21' to M85-1-31'
86	M86-1-11' to M86-1-21' to M86-1-31'
87	M87-1-11' to M87-1-21' to M87-1-31'
88	M88-1-11' to M88-1-21' to M88-1-31'
89	M89-1-11' to M89-1-21' to M89-1-31'
90	M90-1-11' to M90-1-21' to M90-1-31'
91	M91-1-11' to M91-1-21' to M91-1-31'
92	M92-1-11' to M92-1-21' to M92-1-31'
93	M93-1-11' to M93-1-21' to M93-1-31'
94	M94-1-11' to M94-1-21' to M94-1-31'
95	M95-1-11' to M95-1-21' to M95-1-31'
96	M96-1-11' to M96-1-21' to M96-1-31'
97	M97-1-11' to M97-1-21' to M97-1-31'
98	M98-1-11' to M98-1-21' to M98-1-31'
99	M99-1-11' to M99-1-21' to M99-1-31'
100	M100-1-11' to M100-1-21' to M100-1-31'

FIRE HYDRANTS SHOWN HEREON ARE TO BE LOCATED IN ACCORDANCE WITH THE LATEST FIRE HYDRANT SETTING DETAIL (W.I.I.) OBTAIN DETAIL FROM THE BUREAU OF ENGINEERING.



PROCEDURE FOR ABANDONMENT OF 8" WC TO EXISTING HOUSE.

1. CONSTRUCT 8" WC FROM EX. MH 733 TO MH1
2. CONSTRUCT 4" SHC FROM MH1 TO MH10
3. CONSTRUCT MH10 OVER AND CONNECT EX. SHC FROM HOUSE TO MH10 WITH DROP CONNECTION AND TO SHC TO MH1.

NOTE: THE OCCUPANT OF THE EXISTING HOUSE IS TO BE NOTIFIED 72 HOURS PRIOR TO THE BEGINNING OF THE SEWER HOUSE CONNECTION CONSTRUCTION AFFECTING SERVICES TO THE EX. HOUSE.

PROCEDURE FOR ABANDONMENT OF THE 1 1/4" WHC TO THE EXISTING HOUSE

1. CONSTRUCT 8" WATER MAIN AND APPURTENANCES PER PLAN. DO NOT CONNECT TO EXISTING 8" WATER UNTIL ALL OTHER WATER MAIN CONSTRUCTION IS COMPLETED. 1 1/4" WHC TO REMAIN IN SERVICE UNTIL 8" SERVICE IS COMPLETED.
2. CUTOFF 1 1/4" WHC, CONNECT 8" WATER TO EXISTING 8" WATER.
3. DISINFECT AND TEST WATER MAIN.
4. CONNECT EXISTING 1 1/4" WHC TO 8" MAIN FOR EXISTING HOUSE SERVICES.

NOTE: THE OCCUPANT OF THE EXISTING HOUSE IS TO BE NOTIFIED 72 HOURS PRIOR TO WATER CUTOFF.

PIPE HYDRANT (PH) TABLE

PIPE HYDRANT NUMBER	BURY LINE ELEVATION	BURY LENGTH
1	419.33	3.0'
2	423.17	3.5'
3	424.87	7.0'
4	419.25	6.0'

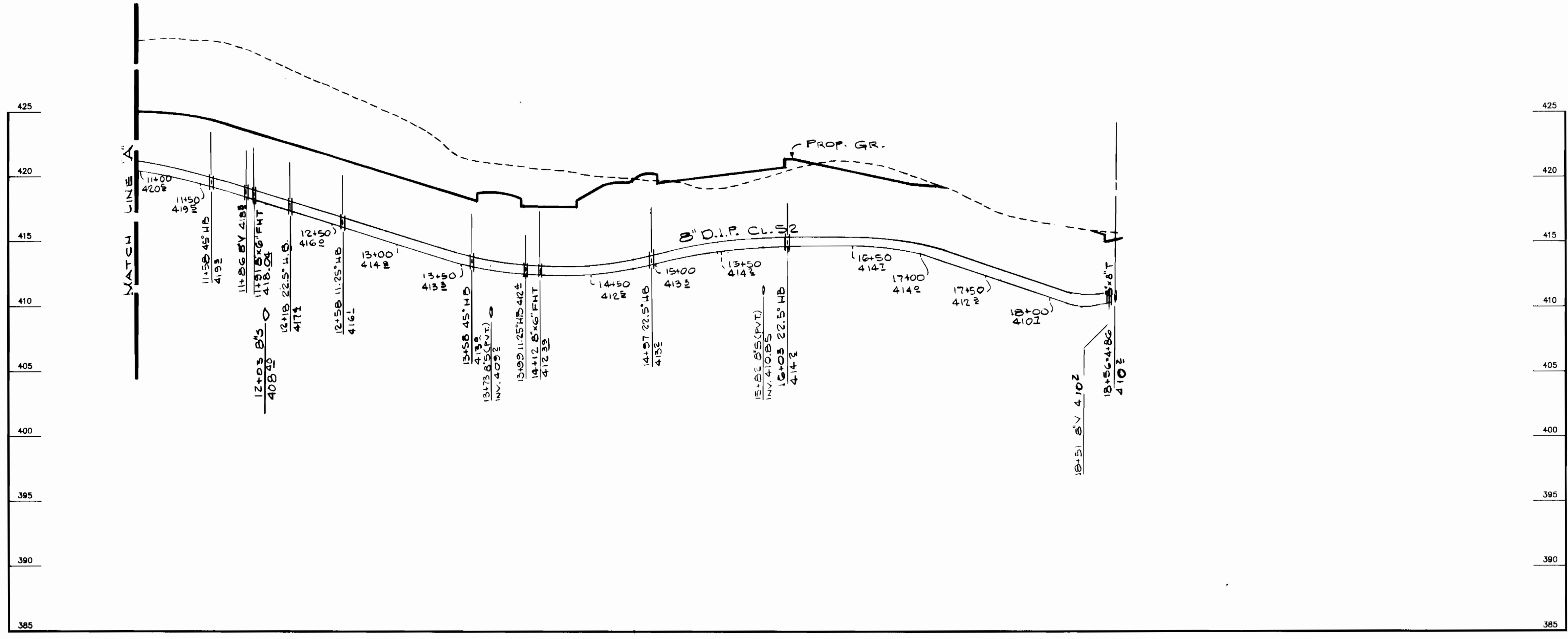
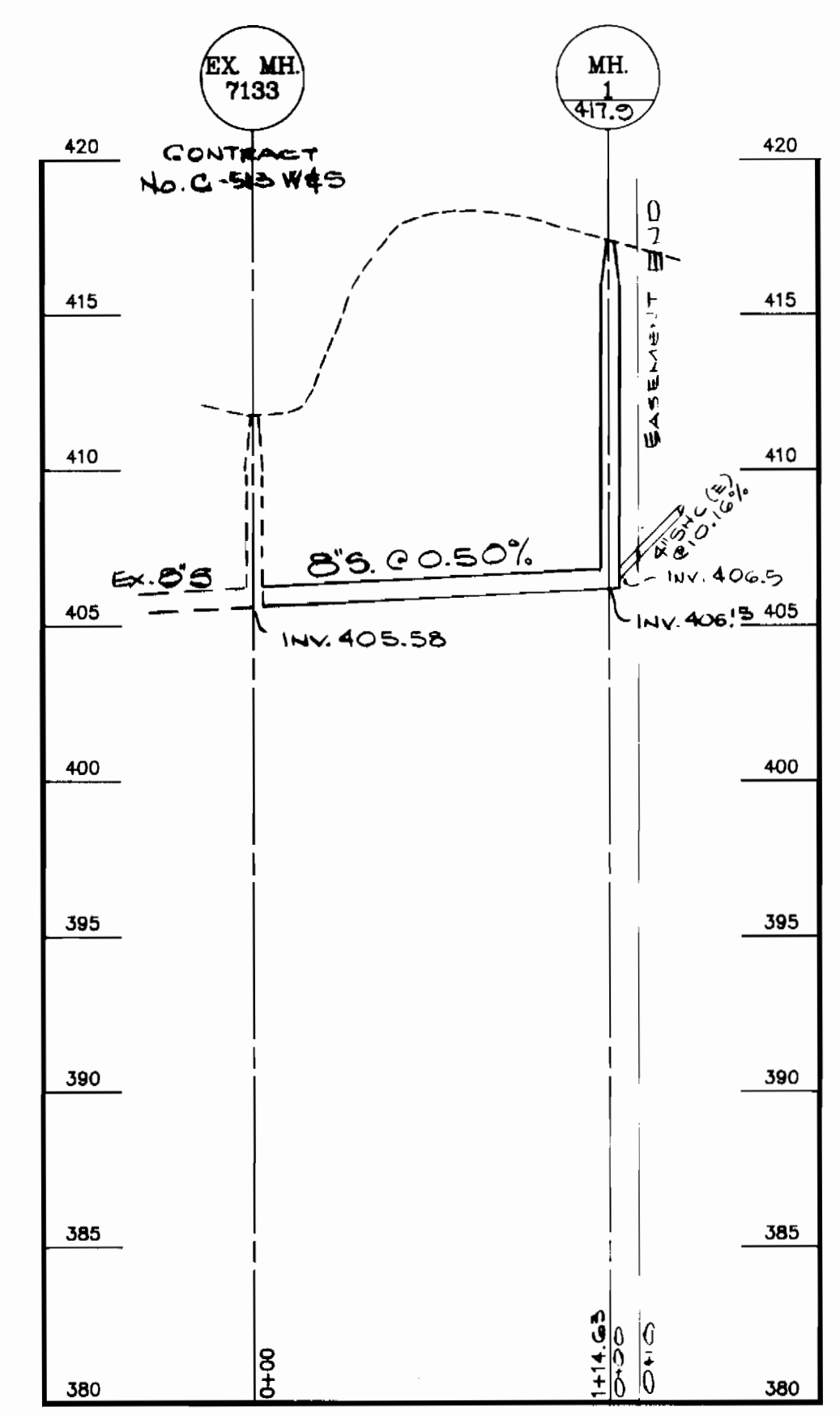
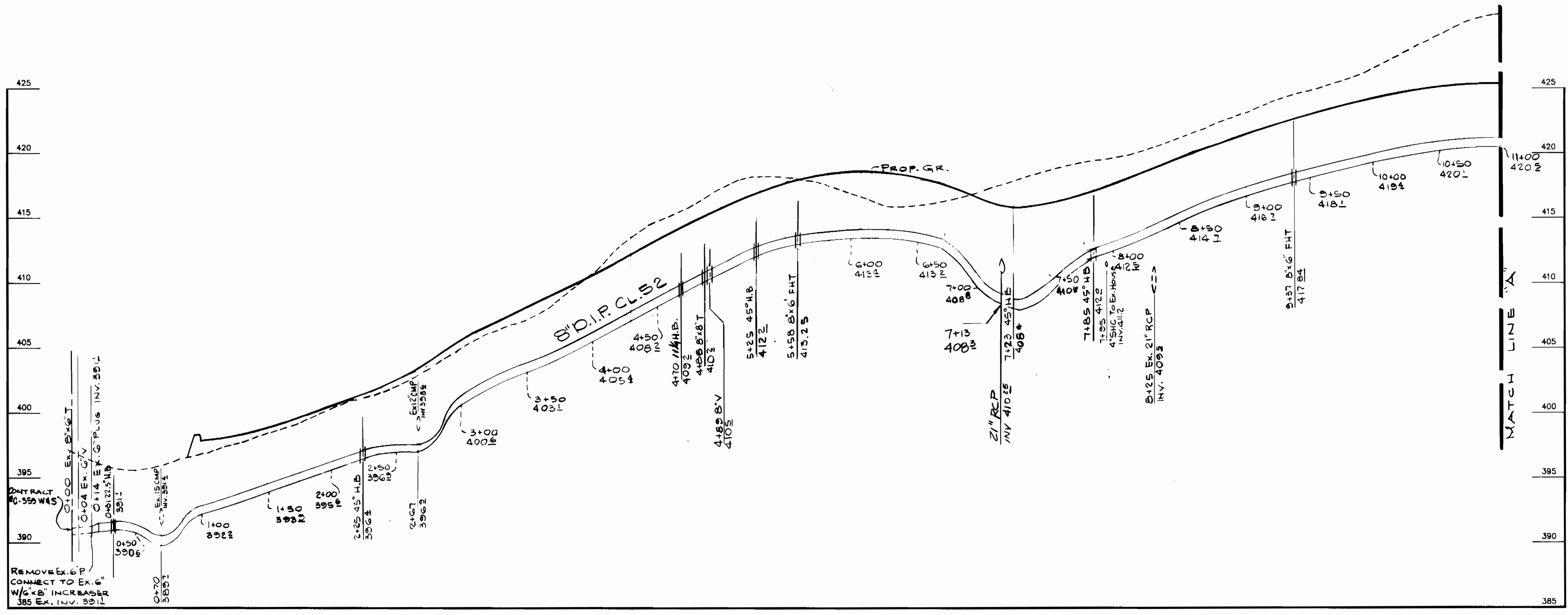
LOCATION TABLE (CONT.)

ITEM	ROAD STATION	LOCATION
8" x 8" TEE	4+82.87	3.53' RIGHT
11.25" BEND	5+22.02	5.00' RIGHT
8" VALVE	5+53.92	18.00' RIGHT
45" BEND	5+53.92	8.79' RIGHT
8" x 8" TEE	5+54.08	5.80' RIGHT
45" BEND	7+18.00	5.00' LEFT
45" BEND	7+77.48	3.99' LEFT
8" x 8" TEE	9+23.35	7.95' RIGHT
8" VALVE	9+23.57	8.02' RIGHT
FIRE HYDRANT	9+24.31	18.02' LEFT
45" BEND	11+55.03	1.00' RIGHT
8" VALVE	11+82.58	8.30' RIGHT
FIRE HYDRANT	11+87.02	19.00' RIGHT
8" VALVE	11+87.74	11.81' RIGHT
8" x 8" TEE	11+87.93	8.72' RIGHT
22.5" BEND	12+18.85	7.03' RIGHT
11.25" BEND	12+60.84	8.00' RIGHT
45" BEND	13+62.84	8.00' RIGHT
11.25" BEND	13+91.74	38.91' RIGHT
FIRE HYDRANT	13+84.89	57.19' RIGHT
8" VALVE	13+98.50	49.43' RIGHT
8" x 8" TEE	13+98.92	47.76' RIGHT
22.5" BEND	14+48.25	119.48' RIGHT
22.5" BEND	14+66.69	221.86' RIGHT

Plan
SCALE: 1" = 50'

DEPARTMENT OF PUBLIC WORKS HOWARD COUNTY, MARYLAND. James J. Law 5/23/93 DIRECTOR OF PUBLIC WORKS Robert B. Berman 5/13/93 CHIEF, BUREAU OF UTILITIES	PREPARED BY: AMERICAN ENGINEERING, INC. CIVIL ENGINEERING CONSULTANTS AND LAND PLANNER 971-A MAIN STREET LAUREL, MD. 20707 BALT. (410) 880-3038 WASH. (301) 953-1221	DES: D.C.W. DRN: W.D.F. CHK: B.S. DATE: 9-18-92	THE GABLES AT NEW YEARS GIFT LOT 3, VLR 1/9; LOTS 18, D-1 & D-3, VLR 1/6 AND LOTS B-1 THRU B-3, A RESUBDIVISION OF PARCEL B, VLR 1/6 CONTRACT No. 24-3262-D 6th ELECTION DISTRICT HOWARD COUNTY, MARYLAND	SCALE AS SHOWN SHEET 2 OF 3





Profile
 SCALE - HORIZ: 1" = 50'
 VERT: 1" = 5'



DEPARTMENT OF PUBLIC WORKS
 HOWARD COUNTY, MARYLAND.

Lane P. Lew 5/25/93
 DIRECTOR OF PUBLIC WORKS DATE

Robert J. Benner 5-13-93
 CHIEF, BUREAU OF UTILITIES DATE

William J. P. Ryan 5-25-93
 CHIEF, BUREAU OF ENGINEERING DATE

John D. ... 5/13/93
 CHIEF, LAND DEVELOPMENT DIVISION DATE

PREPARED BY:
AMERICAN ENGINEERING, INC.
 CIVIL ENGINEERING CONSULTANTS
 AND LAND PLANNER

671-A MAIN STREET
 LAUREL, MD. 20707

BALT. (410) 880-3039
 WASH. (301) 953-1221



DES: D.C.W.	01/0/93
DRN: R.T.T.Jr.	
CHK: B.I.S.	
DATE: 9-18-92	
BY NO.	
REVISION	
DATE	

PROFILE
 WATER AND SEWER MAINS

600' SCALE MAP NO. 36 BLOCK NO. 11

THE GABLES AT NEW YEARS GIFT
 LOT 3, VLR 1/9; LOTS 18, D-1 & D-3, VLR 1/6
 AND LOTS B-1 THRU B-3, A RESUBDIVISION OF
 PARCEL B, VLR 1/6
 CONTRACT No. 24-3262-D
 6th ELECTION DISTRICT
 HOWARD COUNTY, MARYLAND

SCALE
 AS
 SHOWN

SHEET
3 OF 3