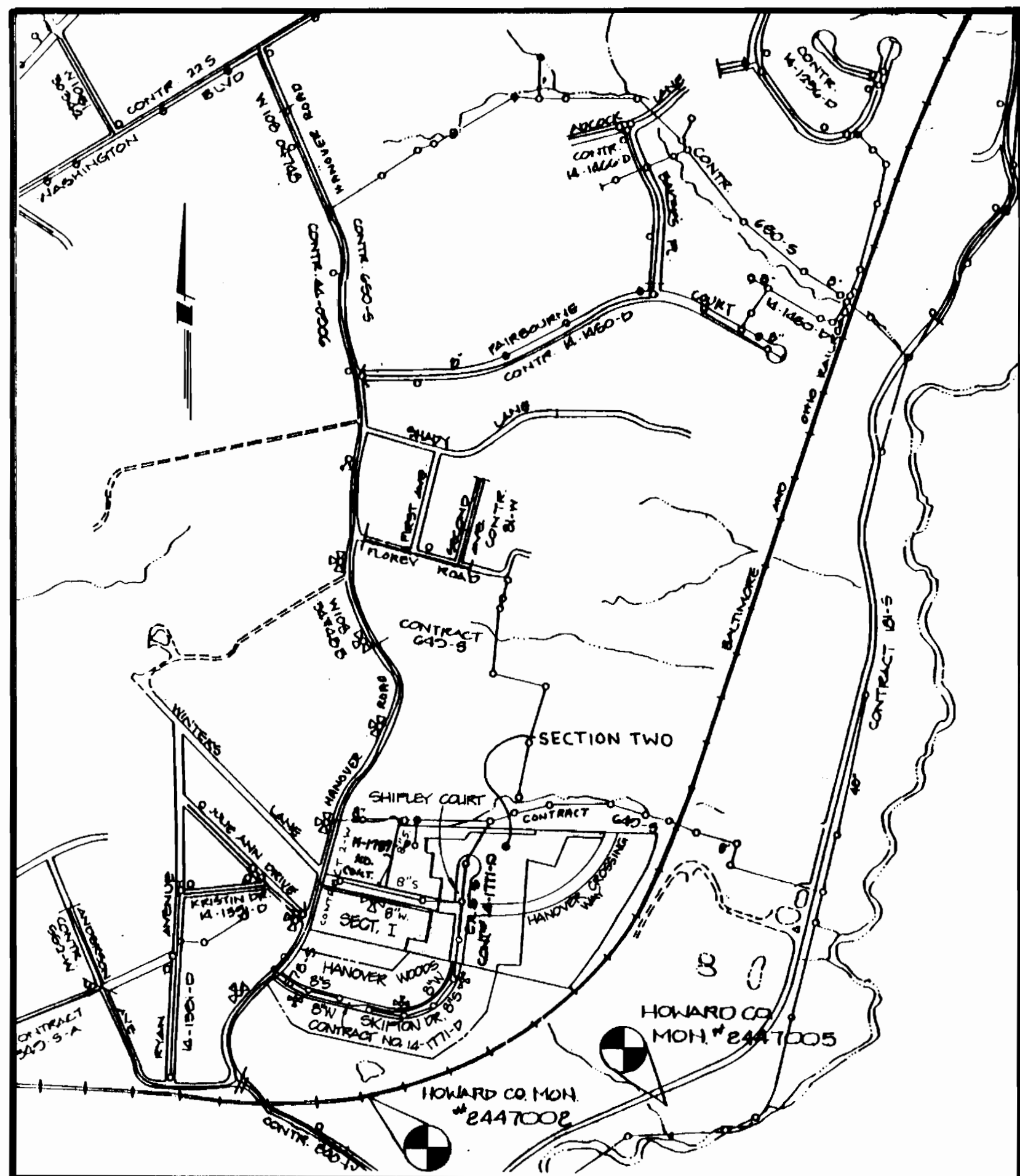


ITEMS	QUANTITIES ESTIMATED	AS-BUILT		
		QUANTITIES	TYPE	MANUFACTURER/SUPPLIER
8" D.I.P.	798'	800'	C-151	US PIPE & FOUNDRY
8" P.V.C. PIPE	264'	264'	SDR-35	CEMENTUM-TEED/WATER PRO
FIRE HYDRANT	1	1	A423	MUELLER/WATER PRO
BLOW OFF HYDRANT	1	1	8X12 F.B.C.	FORD METER/WATER PRO
M.H.	2	2	SAN (R.C. CONC)	ATLANTIC CONC. PROD.
3/4" W.H.C.	695	703	SOFT 3/4" COPPER	HOWELL METAL CO.
4" S.H.C.	580	636	SDR-35	CEMENTUM-TEED
8" I.C. TEE	1	1	MJ SBD1	TYLER/WATER PRO
6"X4" REDUCERS	8	17	MJ SBD1	TYLER/WATER PRO
8"X8" CROSS	1	1	MJ SBD1	TYLER/WATER PRO
8" VALVE	4	4	MJ GATE R50/K	MUELLER/WATER PRO
6" D.I.P.	21'	18	MJ GATE R50/K	US PIPE & FOUNDRY/WATER PRO
4" D.I.P.	14'	15	MJ GATE R50/K	US PIPE & FOUNDRY/WATER PRO
6" V	1	1	MJ GATE R50/K	MUELLER/WATER PRO
4" V	1	1	MJ GATE R50/K	MUELLER/WATER PRO
6"X4" T	1	1	MJ SBD1	TYLER/WATER PRO

UTILITY CONTRACTOR: BURGEMEISTER-BELL INC.
SURVEY AND DRAFTING DIVISION AS-BUILT DATE:

GENERAL NOTES

- APPROXIMATE LOCATION OF EXISTING MAINS ARE SHOWN. THE CONTRACTOR SHALL TAKE ALL NECESSARY PRECAUTIONS TO PROTECT EXISTING MAINS AND SERVICES AND MAINTAIN UNINTERRUPTED SUPPLY. ANY DAMAGE INCURRED SHALL BE REPAIRED IMMEDIATELY TO THE SATISFACTION OF THE ENGINEER AT THE CONTRACTOR'S EXPENSE.
- ALL HORIZONTAL CONTROLS ARE BASED ON MARYLAND STATE COORDINATES.
- ALL VERTICAL CONTROLS ARE BASED ON U.S.G.S. DATUM.
- ALL PIPE ELEVATIONS SHOWN ARE INVERT ELEVATIONS.
- CLEAR ALL UTILITIES BY A MINIMUM OF 6" CLEAR ALL POLES BY 2'-0" MINIMUM OR TUNNEL AS REQUIRED.
- FOR DETAILS NOT SHOWN ON THE DRAWINGS, AND FOR MATERIALS AND CONSTRUCTION METHODS, USE HOWARD COUNTY DESIGN MANUAL, VOLUME IV, STANDARD SPECIFICATIONS AND DETAILS FOR CONSTRUCTION, 1989 AMENDMENTS. THE CONTRACTOR SHALL HAVE A COPY OF VOLUME IV ON THE JOB.
- ⊙ REPRESENTS APPROXIMATE LOCATION OF WHERE TEST PITS SHALL BE DUG BY CONTRACTOR TO VERIFY EXACT LOCATION/ELEVATION OF PROPOSED UTILITY CONNECTION. ANY DAMAGE TO EXISTING FACILITIES DUE TO THE CONTRACTOR'S NEGLIGENCE SHALL BE REPAIRED AT THE CONTRACTOR'S EXPENSE.
- CONTRACTOR SHALL NOTIFY THE FOLLOWING UTILITIES OR AGENCIES AT LEAST FIVE WORK DAYS BEFORE STARTING WORK SHOWN ON THESE PLANS:
STATE HIGHWAY ADMINISTRATION: 531-5533
BALTIMORE GAS & ELECTRIC CO.-CONTRACTOR SERVICES: 850-4620
BALTIMORE GAS & ELECTRIC CO. UNDERGROUND DAMAGE CONTROL: 787-2068
BALTIMORE GAS & ELECTRIC CO. TROUBLE SHOOTING: 298-9001
MISS UTILITY: 1-800-257-7777
COLONIAL PIPELINE COMPANY: 795-1390
BUREAU OF UTILITIES, HOWARD COUNTY DEPARTMENT OF PUBLIC WORKS: 315-4500
C & P TELEPHONE COMPANY: 1-800-257-7777



LOCATION MAP SCALE: 1" = 600'

TYPE OF BUILDING: RESIDENTIAL SINGLE FAMILY
NUMBER OF LOTS: 25 (BUILDABLE)
NO. OF WATER HOUSE CONNECTIONS: 22
NO. OF SEWER HOUSE CONNECTIONS: 22
DRAINAGE AREA: PATAPSCO RIVER

WATER AND SEWER CODE FOR COUNTY USE ONLY
WATER No. A01
SEWER No. 2130000

CONTRACT NO. 14-3230-D
HANOVER CROSSING —
SECTION TWO
LOTS 18-41
WATER AND SEWER MAIN EXTENSIONS
HOWARD COUNTY, MARYLAND
DEPARTMENT OF PUBLIC WORKS

SEDIMENT CONTROL MEASURES FOR THIS CONTRACT WILL BE IMPLEMENTED IN ACCORDANCE WITH SECTION 219 OF THE HOWARD COUNTY DESIGN MANUAL AND STANDARDS AND SPECIFICATIONS FOR SOIL EROSION AND SEDIMENT CONTROL IN DEVELOPING AREAS AND ALSO AS SHOWN ON THE GRADING AND SEDIMENT CONTROL PLAN (P-01-04)

REVIEWED FOR HOWARD COUNTY SOIL CONSERVATION DISTRICT AND MEETS TECHNICAL REQUIREMENTS.

James M. Helm 2/16/93
S. SOIL CONSERVATION SERVICE DATE

THIS DEVELOPMENT PLAN IS APPROVED FOR EROSION AND SEDIMENT CONTROL BY HOWARD SOIL CONSERVATION DISTRICT.

APPROVED: *John P. Deaton* 2/12/93
HOWARD SOIL CONSERVATION DISTRICT DATE

PLAN REFERENCE NUMBERS	
S	88-04
P	88-55
F	91-04

SEWER NOTES

- MANHOLES DESIGNATED W.T. IN PLAN AND PROFILE SHALL HAVE WATER-TIGHT FRAME AND COVERS STANDARD DETAIL G5.52 WHERE WATERTIGHT MANHOLE FRAME AND COVER IS USED. SET TOP OF FRAME 1'-6" ABOVE FINISHED GRADE UNLESS OTHERWISE NOTED ON THE DRAWINGS.
- ALL SEWER MAINS SHALL BE C.S.P.X., R.C.C.P., V.C.P.X., R.C.P., D.I.P. AND P.V.C. UNLESS OTHERWISE NOTED.
- THE CONTRACTOR SHALL PROVIDE A JOINT IN ALL SEWER MAINS WITHIN 2'-0" OF EXTERIOR MANHOLE WALL.
- ALL MANHOLES SHALL BE 4'-0" INSIDE DIAMETER UNLESS OTHERWISE NOTED.
- MANHOLES SHOWN WITH 12" AND 16" WALLS ARE FOR BRICK MANHOLES ONLY.
- MANHOLES LOCATED WITHIN PROPOSED ROADWAY SHALL HAVE STANDARD HEAVY TRAFFIC MANHOLE FRAME AND COVER, STANDARD DETAIL G5.51.
- FORCE MAINS SHALL BE D.I.P. ONLY.

CONTRACT NO. 14-3230-D
HANOVER CROSSING - SECTION TWO
LOTS 18-41
WATER AND SEWER MAIN EXTENSION
HOWARD COUNTY, MARYLAND

WATER & SEWER AS BUILTS

DEPARTMENT OF PUBLIC WORKS
HOWARD COUNTY, MARYLAND

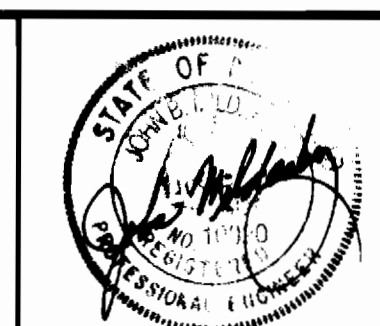
James M. Helm 2/17/93
DIRECTOR OF PUBLIC WORKS DATE

John P. Deaton 2/8/93
CHIEF, BUREAU OF UTILITIES DATE

John P. Deaton 2/17/93
CHIEF, LAND DEVELOPMENT DIVISION DATE

MILDENBERG, MOCHI & ASSOCIATES, INC.
ENGINEERS • SURVEYORS • PLANNERS

3300 North Ridge Road, Suite 235, Ellicott City, Maryland 21043-3350
(410) 461-0078 D.C. Metro No. (301) 621-5768



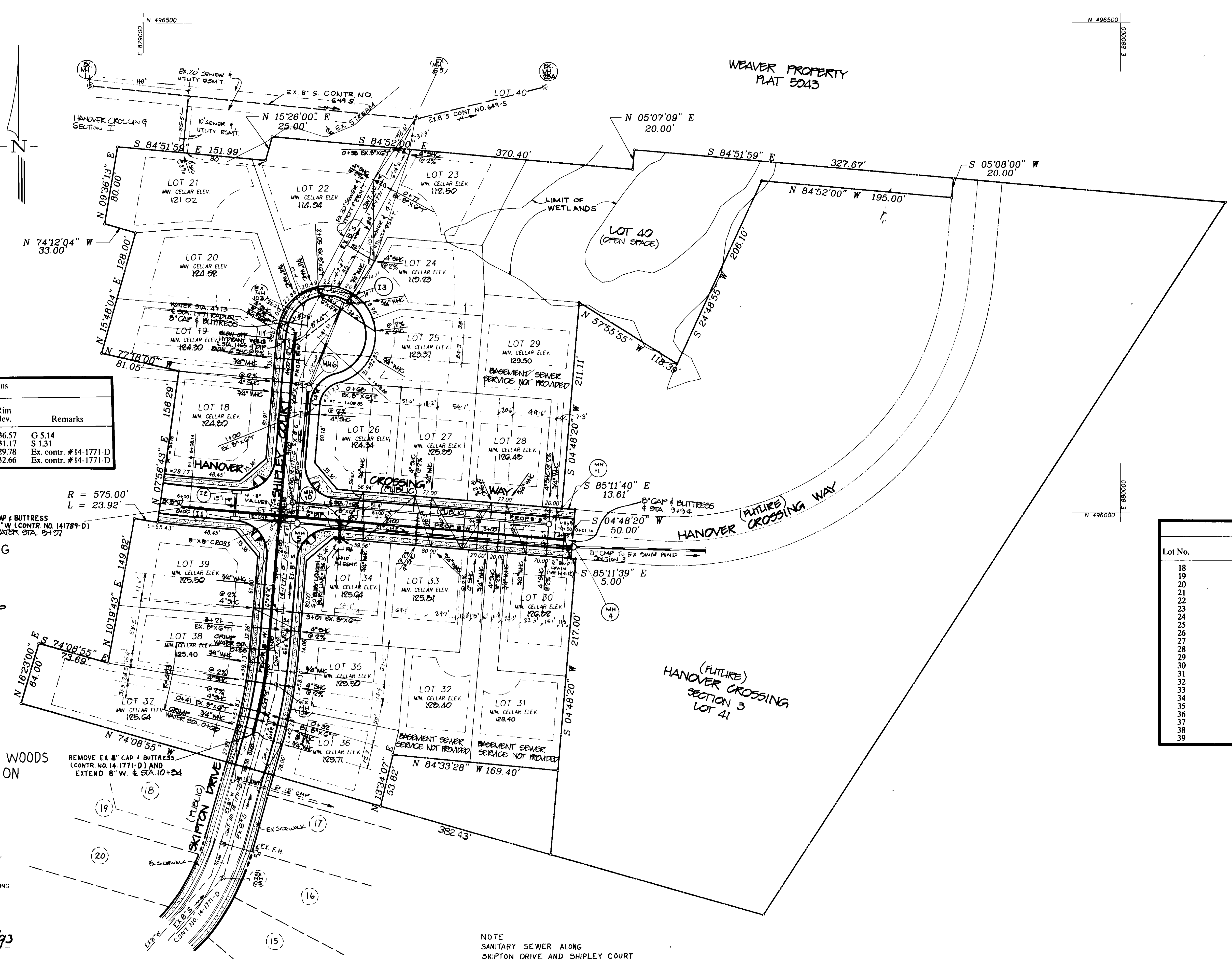
DES.	MAJ/AM	DATE	REVISION
DRN:	JL		
CHK:	JBM	2	REVIEW PER 11/6/92 COMMENTS
PROJ #	90013.00	1	REVIEW COMMENTS DATED 9/16/92 & RE-SUBMIT 10/27/92
DATE:	7/20/90		
BY:	NO.		

TITLE SHEET

600' SCALE MAP NO. 38 BLOCK NO. 15

HANOVER CROSSING - SECTION TWO
LOTS 18-41
CONTRACT NO. 14-3230-D
ELECTION DISTRICT NO. 1
HOWARD COUNTY, MARYLAND

SCALE AS SHOWN
SHEET 1 OF 3



Manhole Specifications

No.	Location	Rim Elev.	Remarks
10	Hanover Crossing Way Sta. 7+13.7 L	136.57	G 5.14
11	Hanover Crossing Way Sta. 9+77.7 L	131.17	S 1.31
103	Shiple Court Sta. 1+87.26 L	129.78	Ex. contr. #14-1771-D
104	Skipton Drive Sta. 10+90.8 R	132.66	Ex. contr. #14-1771-D

Sewer House Connections

Lot No.	Location/Pipe Station	Inv. @ P _i
18	MH 103 - MH 10 Sta. 0+68	120.52
19	MH 103 - MH 104 Sta. 0+45	120.41
20	MH 103 - MH 104 Sta. 0+08	120.22
21	MH 65 - MH 10 Sta. 2+52	117.52
22	MH 65 - MH 103 Sta. 0+77	110.85
23	MH 65 - MH 103 Sta. 0+38	108.59
24	MH 65 - MH 103 Sta. 1+40	113.33
25	MH 65 - MH 103 Sta. 2+05	119.27
26	MH 103 - MH 10 Sta. 1+00	120.44
27	MH 10 - MH 11 Sta. 1+24	121.99
28	MH 10 - MH 11 Sta. 2+02	122.58
29	MH 10	123.04
30	MH 10	123.32
31	MH 10 - MH 11 Sta. 2+12	122.93
32	MH 10 - MH 11 Sta. 1+91	122.77
33	MH 10 - MH 11 Sta. 1+29	122.31
34	MH 10 - MH 104 Sta. 1+31	121.54
35	MH 104	121.80
36	MH 104 - MH 105 Sta. 0+41	122.01
37	MH 104 - MH 105 Sta. 0+32	122.15
38	MH 104	122.08
39	MH 10 - MH 104 Sta. 1+10	121.25

HANOVER CROSSING SECTION I
PROPERTY OF
J.N.D.C.
LIMITED PARTNERSHIP

HANOVER WOODS SUBDIVISION

SEDIMENT CONTROL MEASURES FOR THIS CONTRACT WILL BE IMPLEMENTED IN ACCORDANCE WITH SECTION 219 OF THE HOWARD COUNTY DESIGN MANUAL AND STANDARDS AND SPECIFICATIONS FOR SOIL EROSION AND SEDIMENT CONTROL IN DEVELOPING AREAS AND ALSO AS SHOWN ON THE GRADING AND SEDIMENT CONTROL PLAN.

REVIEWED FOR HOWARD COUNTY SOIL CONSERVATION DISTRICT AND MEETS TECHNICAL REQUIREMENTS.
James M. Helm 2/12/93
SOIL CONSERVATION SERVICE DATE

APPROVED:
James M. Helm 2/12/93
HOWARD COUNTY SOIL CONSERVATION DISTRICT

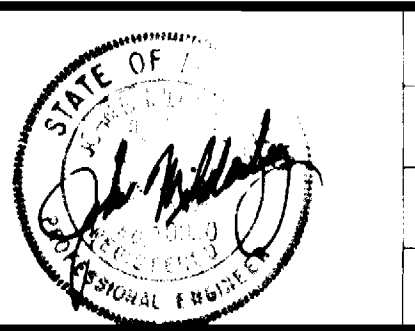
Owner
J.N.D.C. Limited Partnership
5570 Sterrett Place, Suite 201
Columbia, Maryland 21044
(410) 997-3815

Developer
Newburn Development Corporation
5570 Sterrett Place, Suite 201
Columbia, Maryland 21044
(410) 997-3815

NOTE:
SANITARY SEWER ALONG SKIPTON DRIVE AND SHIPLEY COURT PROPOSED UNDER CONTRACT NO. 14-1771-D

DEPARTMENT OF PUBLIC WORKS
HOWARD COUNTY, MARYLAND
James M. Helm 2-12-93
DIRECTOR OF PUBLIC WORKS DATE
Ray G. Benner 2-8-93
CHIEF, BUREAU OF ENGINEERING DATE
Ray G. Benner 2/17/93
CHIEF, LAND DEVELOPMENT DIVISION DATE

MILDENBERG, MOCHI & ASSOCIATES, INC.
ENGINEERS • SURVEYORS • PLANNERS
3300 North Ridge Road, Suite 255, Ellicott City, Maryland 21043-3350
(301) 461-0078 D.C. Metro No. (301) 621-5768

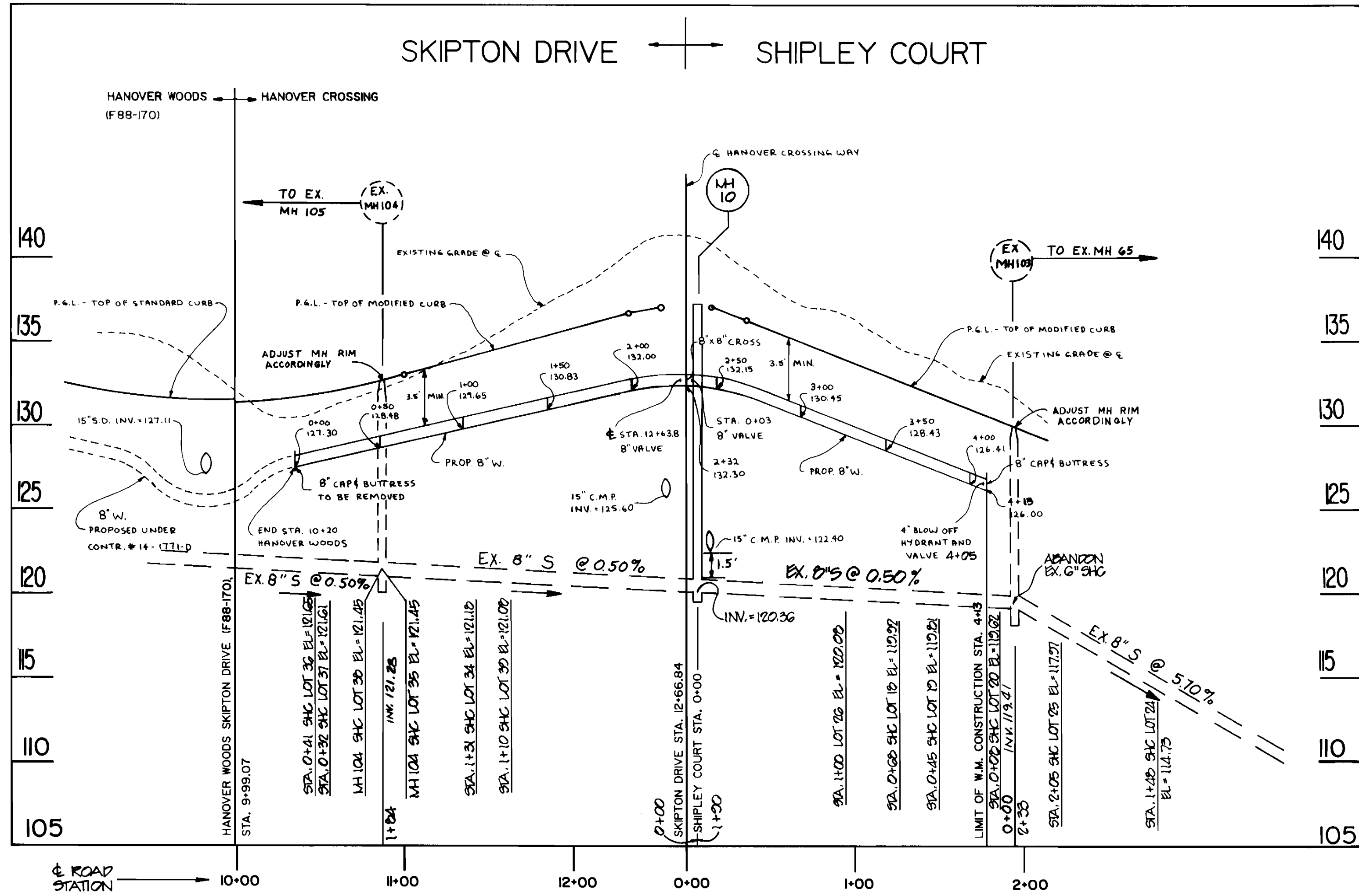


DES.	MAJ/AM	DATE	REVISION
DRN.	JL	5	REVISED F.H. LOCATION
DRN.	JL	2	REVISED PER 1/16/92 COMMENTS
CHK.	BM	1	REVISE COMMENTS DATE 9/16/92 & RE-SUBMIT
DATE:	7/20/90	BY:	NO.

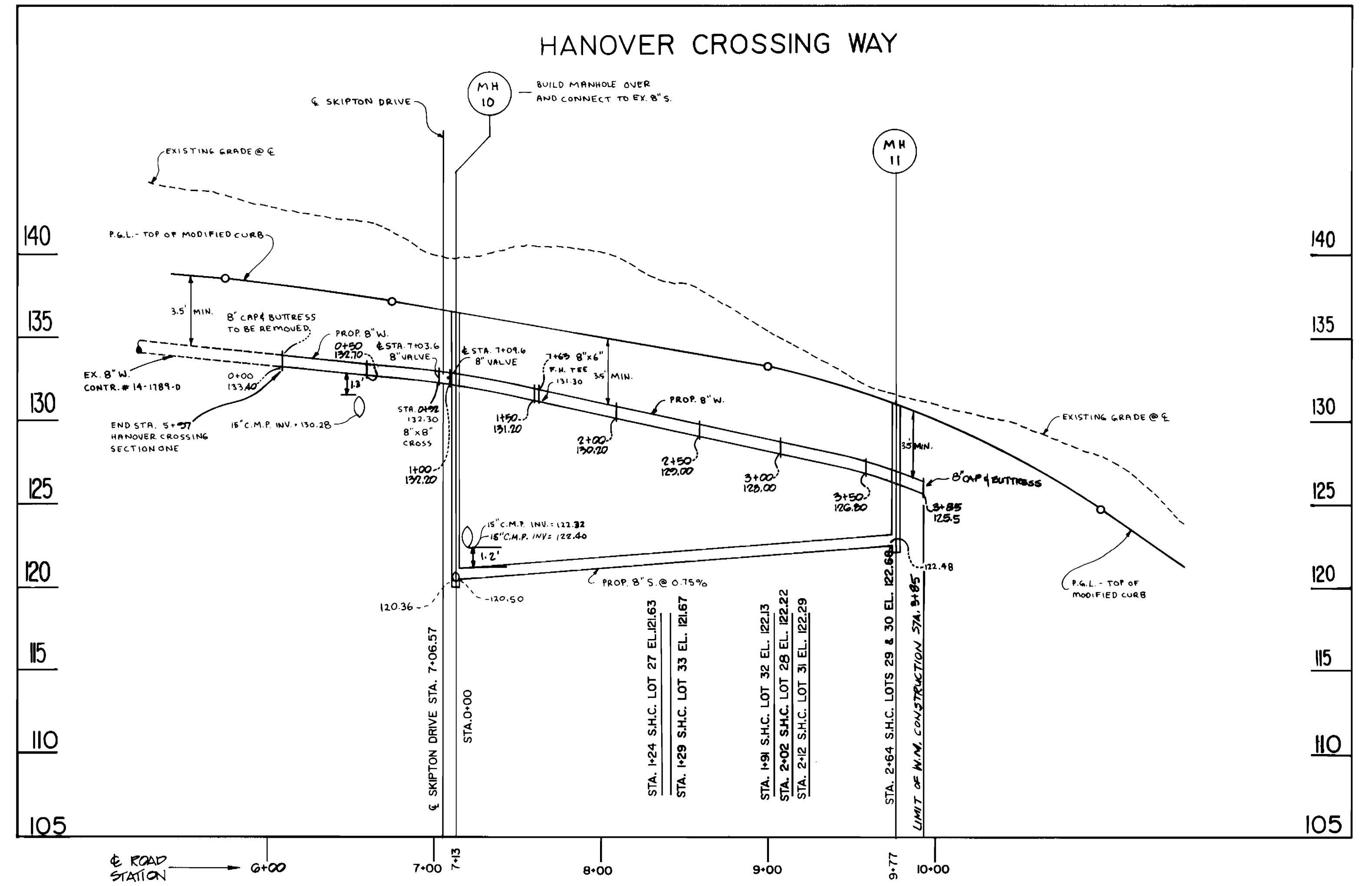
WATER AND SEWER MAIN EXTENSION PLAN

HANOVER CROSSING - SECTION TWO
LOTS 18-41
CONTRACT NO. 14-3230-D
ELECTION DISTRICT NO. 1
HOWARD COUNTY, MARYLAND

SCALE
1" = 50'
SHEET
2 OF 3



SCALE - VERT. 1"=5'
HORIZ. 1"=50'

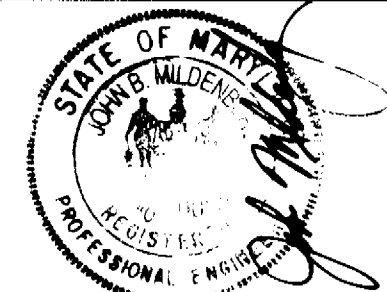


SCALE - VERT. 1"=5'
HORIZ. 1"=50'

CONTRACT NO. 14-3230-D
HANOVER CROSSING - SECTION TWO
LOTS 18-41
WATER AND SEWER MAIN EXTENSION
HOWARD COUNTY, MARYLAND

DEPARTMENT OF PUBLIC WORKS
HOWARD COUNTY, MARYLAND
Director of Public Works: *James G. ...* DATE: 2/17/93
Chief, Bureau of Engineering: *...* DATE: 2-11-93
Chief, Bureau of Utilities: *Robert ...* DATE: 2-8-93
Chief, Land Development Division: *...* DATE: ...

MILDENBERG, MOCHI & ASSOCIATES, INC.
ENGINEERS • SURVEYORS • PLANNERS
3300 North Ridge Road, Suite 235, Ellicott City, Maryland 21043-3350
(301) 461-0078 D.C. Metro No. (301) 621-5768



DES:	MAJ/AM			
DRN:	JL			
CHK:	JEM			
DATE:	7/20/90	BY:	NO.	
REVISION				
DATE:	10/27/92	DATE:	7/30/90	
REVISION		REVISION		

WATER AND SEWER MAIN
EXTENSION
PROFILES
600' SCALE MAP NO. 38 BLOCK NO. 15

HANOVER CROSSING - SECTION TWO
LOTS 18-41
CONTRACT NO. 14-3230-D
ELECTION DISTRICT NO. 1
HOWARD COUNTY, MARYLAND

SCALE AS SHOWN
SHEET 3 OF 3