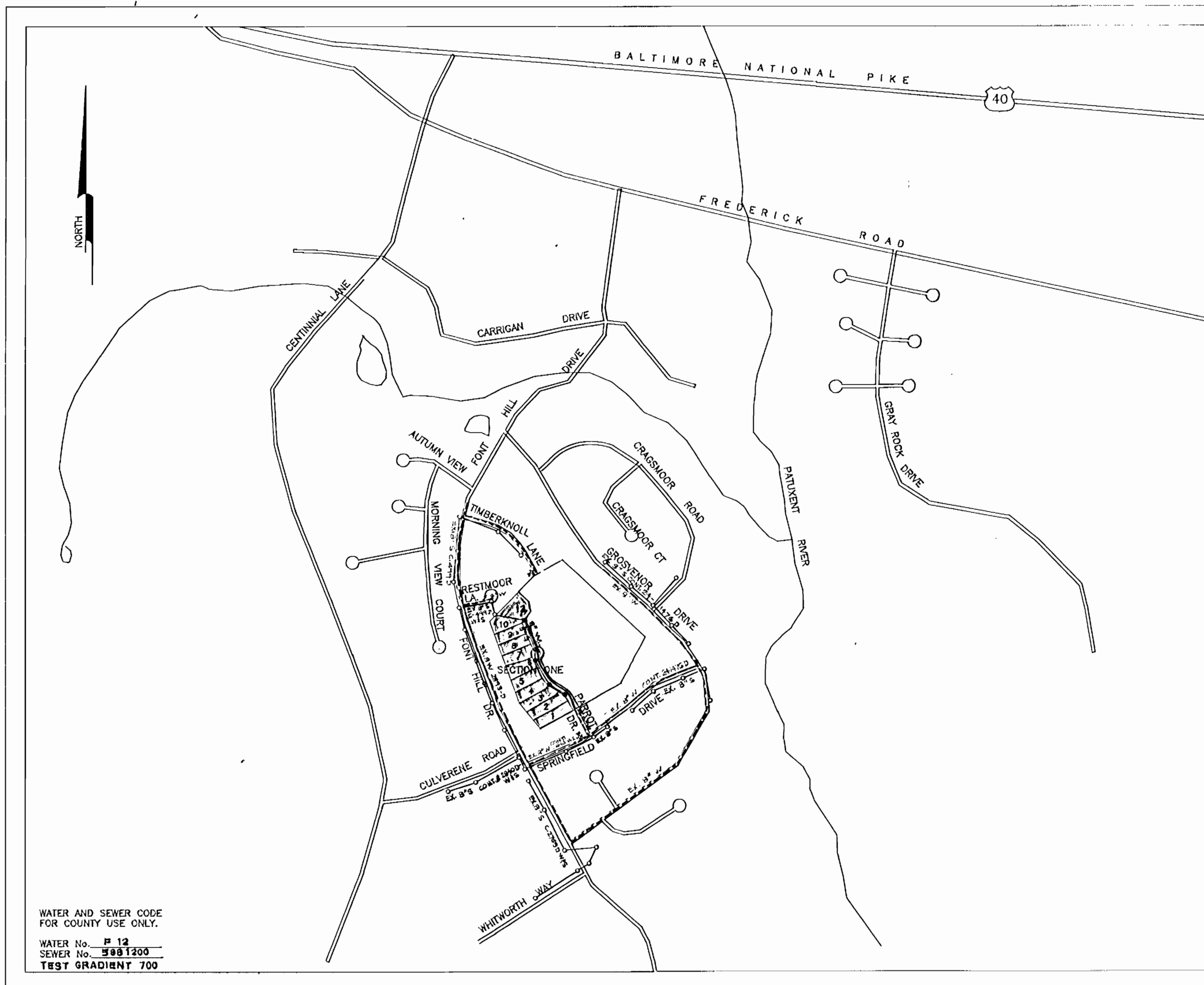


QUANTITIES				
ITEMS	QUANTITIES ESTIMATED	AS - BUILT		
		QUANTITIES	TYPE	MANUFACTURER/SUPPLIER
8" SEWER	934 LF.	432 LF	30K 32-40 PC	J.M. PIPE
8" WATER	800 LF.	414 LF	CL 82 DI	ATLANTIC STATES
4" SHC	130 LF.	125 LF	30R 35 IV6	J.M. PIPE CO.
1/2" WHC	65 LF.	66 LF	R COPPER	CAMBRIDGE-LEE
1" WHC	115 LF.	121 LF	" "	" "
MANHOLES	5 EACH	5 EA	PC.	ATLANTIC CONC. PROD/SAME
8" WATER	342 LF.	345 LF	DI CL 52	ATLANTIC STATES
FIRE HYDRANT	1 EACH	1 EA	4 1/2 A 473	MUELLER CO.
8" x 8" TEE	1 EACH	1 EA	MJ CL 52	TYLER PIPE CO.
8" VALVE	1 EACH	1 EA	MJ A 2370-40	MUELLER CO.
2 1/2" REDUCER	2 EACH	2 EA	MJ	TYLER PIPE CO.
8" x 8" TEE	1 EACH	1 EA	MJ	TYLER PIPE CO.
NAME OF UTILITY CONTRACTOR: <u>RONKIN CONST. CO. INC.</u>				
SURVEY AND DRAFTING DIVISION AS BUILT DATE: _____				

MANHOLE SCHEDULE		
MH NO.	RIM ELEVATION	LOCATION
MH-1	420.56	N 522288.729, E 839984.541
MH-2	434.16	sta. 1+72.32 of LINEAR PROFILE; 7.64' from edge of paving
MH-3	436.04	7.98' offset left of cl @ sta. 7+12.55
MH-4	439.00	15.45' offset left of cl @ sta. 5+32.59
MH-5	437.57	8' offset left of cl @ sta. 3+04.25



WATER AND SEWER CODE FOR COUNTY USE ONLY.  
 WATER No. P 12  
 SEWER No. 5881200  
 TEST GRADIENT 700

TYPE OF BUILDING: SINGLE FAMILY  
 NUMBER OF LOTS: 12  
 NO. OF WATER HOUSE CONNECTIONS: 10  
 NO. OF SEWER HOUSE CONNECTIONS: 10  
 DRAINAGE AREA: LITTLE PATUMENT RIVER  
 TREATMENT PLANT: PATAPSCO VIA MD. RT. 108  
 PUMPING STATION

LOCATION MAP  
 SCALE: 1" = 600'

GENERAL NOTES

- Approximate location of existing mains are shown. The contractor shall take all necessary precautions to protect existing mains and services and maintain uninterrupted supply. Any damage incurred shall be repaired immediately to the satisfaction of the Engineer at the Contractor's expense.
- All horizontal controls are based on Maryland State Coordinates.
- All vertical controls are based on U.S.G.S. data.
- All pipe elevations shown are invert elevations.
- Clear all utilities by a minimum of 6". Clear all poles by 2'-0" minimum or tunnel as required. The owner has contacted the utility companies and has made arrangements for bracing of poles as shown on the drawings. In the event the contractor's work requires the bracing of additional poles or damages shall be deducted from money owed the contractor. The contractor shall coordinate with the utility companies to schedule the bracing of the poles.
- For details not shown on the drawings, and for materials and construction methods use Howard County Design Manuals, Vol. IV, Standard specifications and Detail for Construction (Latest Edition). The contractor shall have a copy of Volume IV on the job.
- Where test pits have been made on existing utilities, they are noted by the symbol at the location of the test pit. A note or notes containing the results of the test pit or pits is included on the drawings. Existing utilities in the vicinity of the proposed work for which test pits have not been dug shall be located by the contractor two weeks in advance of the construction operations at his own expense.
- Contractors shall notify the following utility companies or agencies at least five working days before starting work shown on these plans:
 

State Highway Administration	531-5533
BG&E Co. Contractor Services	850-4620
BG&E Co. Under Ground Damage Control	787-9068
Miss Utility	1 800 257-7777
Colonial Pipeline Co.	795-1390
Howard County Department of Public Works Bureau of Utilities	313-4900
- Trees and shrubs are to be protected from damage to maximum extent. Trees and shrubs located within the construction strip are not to be removed or damaged by the contractor.
- Contractors shall remove trees, stumps and roots along line of excavation. Payment for such removal shall be included in the unit price bid for construction of the main.
- All water mains to be D.I.P. Class 52 unless otherwise noted.
- Tops of all water mains to have a minimum of 3 1/2' cover otherwise noted.
- Valves adjacent to tees shall be strapped to tees.
- All fittings shall be buttressed or anchored with concrete in accordance with the Standard Details unless otherwise provided for on the drawings.
- Fire hydrants shall be set to the bury line elevations shown on the drawings. All fire hydrants shall be restrained in accordance with standard details W.F.11 & W.F.12. Soil around the fire hydrant shall be compacted in accordance with Section 1000 and 1005 of the Standard Specifications.
- The contractor shall not operate any water main valves on existing water system.
- All water house connections shall be for inside meter setting unless otherwise noted on plans or in specifications.
- All sewer mains shall be D.I.P. RCP, VCPX, CSPX, RCCP and P.V.C. unless otherwise noted.
- The contractor shall provide a joint in all sewer mains with in 2'-0" of exterior manhole wall.
- All manholes shall be 4'-0" inside diameter unless otherwise noted.
- Manholes shown with 12" and 16" walls are for brick manholes only.
- Manholes designated W.T. in plan and profile shall have watertight frame and covers, Standard Details 05.52. Where watertight manhole frame and cover is used, set top of frame 1" - 8" above finished grade unless otherwise noted on the drawings.
- House(s) with the symbol "C.N.S." indicates that cellar cannot be served.

BENCHMARKS

HOWARD CO. MON. # \_\_\_\_\_ ELEV. 421.92  
 BM # 1 X-CUT TO TOP OF FH

HOWARD CO. MON. # \_\_\_\_\_ ELEV. 405.23  
 BM # 2 TOP OF SEWER MANHOLE

FONT HILL MANOR FARM ESTATES  
 CONTRACT No. **24-3227-D**  
 WATER AND SEWER MAIN EXTENTSIONS  
 HOWARD COUNTY, MARYLAND  
 DEPARTMENT OF PUBLIC WORKS  
 SECTION ONE

SEDIMENT CONTROL MEASURES FOR THIS CONTRACT WILL BE IMPLEMENTED IN ACCORDANCE WITH ARTICLE 15 OF THE HOWARD COUNTY DESIGN MANUAL AND STANDARDS AND SPECIFICATIONS FOR SOIL EROSION AND SEDIMENT CONTROL IN DEVELOPING AREAS AND ALSO AS SHOWN ON THE GRADING AND SEDIMENT CONTROL PLAN F-13-16

THIS DEVELOPMENT PLAN IS APPROVED FOR EROSION AND SEDIMENT CONTROL BY HOWARD COUNTY SOIL CONSERVATION DISTRICT.

REVIEW FOR HOWARD COUNTY SOIL CONSERVATION DISTRICT AND MEETS TECHNICAL REQUIREMENTS.

APPROVED

*James M. Helm* 4/8/93  
 S.O. SOIL CONSERVATION SERVICE DATE

*John R. Robertson* 4/8/93  
 HOWARD SOIL CONSERVATION DISTRICT DATE

DEPARTMENT OF PUBLIC WORKS  
 HOWARD COUNTY, MARYLAND

*Roman J. ...* 4/6/93  
 DIRECTOR OF PUBLIC WORKS DATE

*Michael ...* 4-2-93  
 CHIEF, BUREAU OF UTILITIES DATE

*Michael ...* 4-15-93  
 CHIEF, BUREAU OF ENGINEERING DATE

*...* 4/5/93  
 CHIEF, LAND DEVELOPMENT DIVISION DATE

**Voria Engineering Inc.**  
 CONSULTING ENGINEERS-LAND PLANNERS-SURVEYORS  
 3230 BETHANY LANE, SUITE 4, ELLICOTT CITY, MD.  
 410-465-0400



DES: MLL			
DRN: AVG			
CHK: MLL			
DATE: 8-17-92	BY	NO.	REVISION

OWNER:  
**TIMOTHY E. WELSH**  
 P.O. BOX 1447  
 ELLICOTT CITY, MD. 21041-1447  
 CONTRACT No. 24-3227-D  
 DATE: 600' SCALE MAP NO. 42 BLOCK

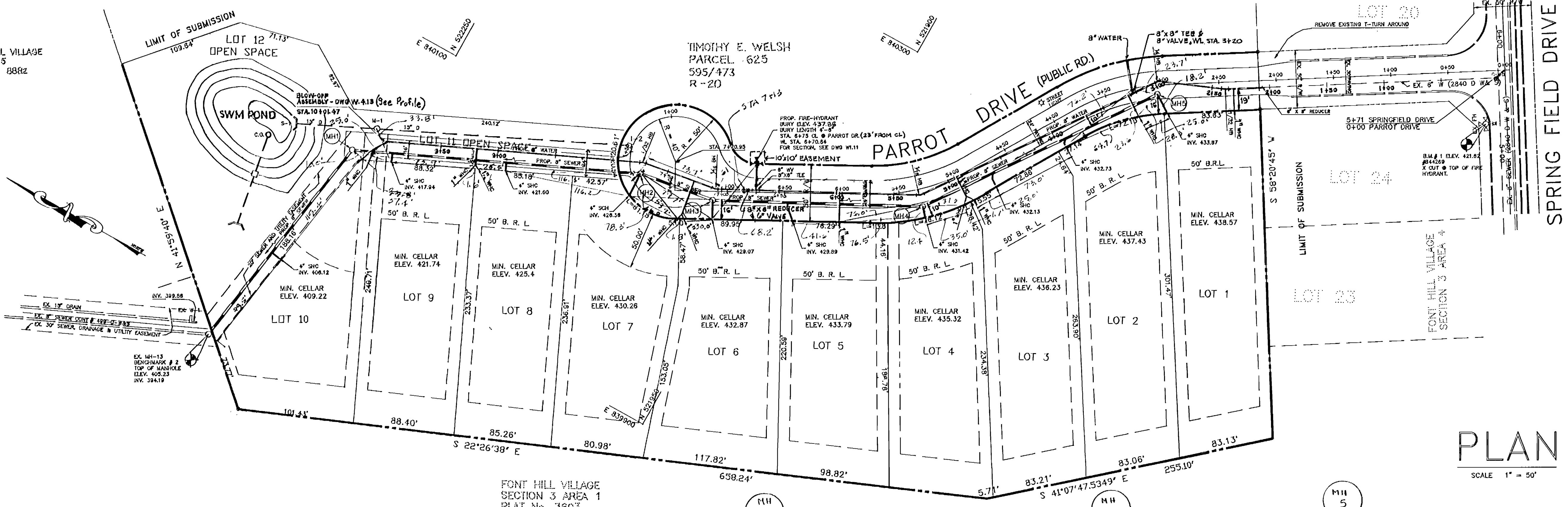
COVER SHEET  
**FONT HILL MANOR FARM ESTATES**  
 SECT. 1, LOTS 1 THRU 12  
 TAX MAP 42 PARCEL 725  
 2ND ELECTION DISTRICT HOWARD COUNTY, MARYLAND

SCALE AS SHOWN  
 SHEET 1 OF 2

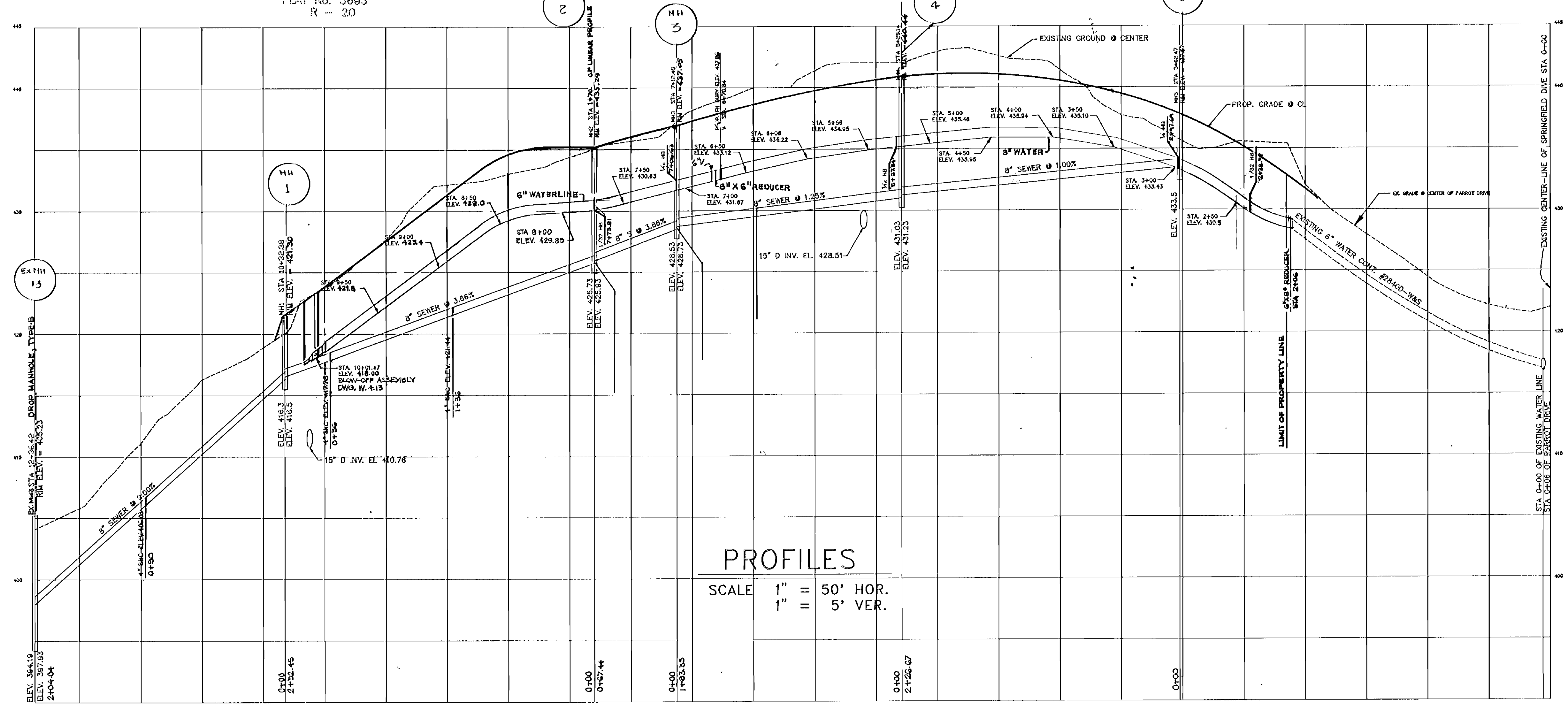
FONT HILL VILLAGE  
SECTION 5  
PLAT No. 8862

TIMOTHY E. WELSH  
PARCEL 625  
595/473  
R-20

FONT HILL VILLAGE  
SECTION 3 AREA 1  
PLAT No. 3663  
R-20



**PLAN**  
SCALE 1" = 50'



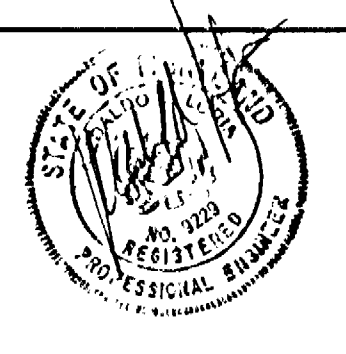
**PROFILES**  
SCALE 1" = 50' HOR.  
1" = 5' VER.

DEPARTMENT OF PUBLIC WORKS  
HOWARD COUNTY, MARYLAND

*Ramon J. Lewis* 4/16/93  
DIRECTOR OF PUBLIC WORKS DATE  
*Michael J. Williams* 4/29/93  
CHIEF, BUREAU OF UTILITIES DATE

*William S. Rely* 4/15/93  
CHIEF, BUREAU OF ENGINEERING DATE  
*William S. Rely* 4/15/93  
CHIEF, LAND DEVELOPMENT DIVISION DATE

**Woria Engineering Inc.**  
CONSULTING ENGINEERS-LAND PLANNERS-SURVEYORS  
3230 BETHANY LANE, SUITE 4, ELLICOTT CITY, MD.  
410-465-0400



DES :	MLL				
DRN :	AVG				
CHK :	MLL				
DATE :	18-17-92	BY :	NO.	REVISION	DATE

PLAN AND PROFILE OF  
WATER AND SEWER MAINS  
CONTRACT # **24-3227-D**

**FONT HILL MANOR FARM ESTATES**  
SECT. 1, LOTS 1 THRU 12  
TAX MAP 42 PARCEL 725  
2ND ELECTION DISTRICT HOWARD COUNTY, MARYLAND

SCALE  
AS  
SHOWN  
SHEET  
2 OF 2

AS-BUILT 1/27/95

3227 w/s Pos Sht #1

