

W & S Code
County Use

Water No. 010
Sewer No. 5200000
Slope Gradient: 700W
Zone: 500

Type of Bldg :
SINGLE FAMILY
Drainage Area :
PATUXENT
Treatment Plant :
LITTLE PATUXENT WATER
QUALITY MANAGEMENT
CENTER, BALDWIN
No. of W.M.C. - 11
No. of S.M.C. - 12
No. of Buildable
Lots : 11
No. of Non-Buildable
Lots : 4

VICINITY MAP
SCALE : 1"=600'

BENCHMARKS

BM #1 HO. CO. MONUMENT 2240003
N 487041.410 E 838788.085 ELEV 375.134
CONC. MON. 7"± N. OF N. EDGE ROAD, 0.3'
BELOW SURFACE

BM #2 HO. CO. MONUMENT 2240012
N 486968.704 E 838903.564 ELEV N/A
CONC. MON. 0.3' ABOVE SURFACE

GENERAL NOTES

- Approximate location of existing mains are shown. The contractor shall take all necessary precautions to protect existing mains and services and maintain uninterrupted supply. Any damage incurred shall be repaired immediately to the satisfaction of the Engineer or the Contractor's expense.
- All horizontal controls are based on Maryland State Coordinates.
- All vertical controls are based on U.S.G.S. data.
- All pipe elevations shown are invert elevations.
- Clear all utilities by a minimum of 6". Clear all poles by 2'-0" minimum or tunnel as required. The owner has contacted the utility companies and has made arrangements for bracing of poles as shown on the drawings. In the event the contractor's work requires the bracing of additional poles, any cost incurred by the owner for bracing of additional poles or damage shall be deducted from money owed the contractor. The contractor shall coordinate with the utility companies to schedule the bracing of the poles.
- For details not shown on the drawings, and for materials and construction methods use Howard County Design Manual, Volume IV, Standard Specifications and Detail for Construction, (Latest Edition). The contractor shall have a copy of Volume IV on the job.
- Where test pits have been made on existing utilities, they are noted by the symbol at the location of the test pit. A note or notes containing the results of the test pit or pits is included on shown on the drawings. Existing utilities in the vicinity of the proposed work for which test pits have not been dug shall be located by the contractor two weeks in advance of construction operations at his own expense.
- Contractor shall notify the following utility companies or agencies at least five working days before starting work shown on these plans:
State Highway Administration 331-5533
Baltimore Gas & Electric Co. Contractor Services 850-4630
Baltimore Gas & Electric Co. Underground Damage Control 787-9088
Miss Utility 1-800-251-7777
Colonial Pipeline Co. 795-1390
Bureau of Utilities, Howard County Department of Public Works 313-4900
- Trees and shrubs are to be protected from damage to maximum extent. Trees and shrubs located within the construction strip are not to be removed or damaged by the contractor.
- Contractor shall remove trees, stumps and roots along line of excavation. Payment for such removal shall be included in the unit price bid for construction of the main.
- All water mains to be D.I.P. Close 52 unless otherwise noted.
- Top of all water mains to have a minimum of 3'-1/2" cover unless otherwise noted.
- Valves adjacent to trees shall be strapped to trees.
- All fittings shall be buttressed or anchored with concrete in accordance with the Standard Detail unless otherwise provided for on the drawings.
- Fire hydrants shall be set to the bury line elevations shown on the drawings. All fire hydrants shall be maintained and buttressed with concrete in accordance with Standard Details. Soil around the fire hydrant shall be compacted in accordance with Section 1000 and 1005 of the Standard Specifications.
- The contractor shall not operate any water main valves on the existing water system.
- All water house connections shall be for inside meter setting unless otherwise noted on plans or in specifications.
- All sewer mains shall be DIP, RCP, VCPX, CSPX, RCP and P.V.C. unless otherwise noted.
- The contractor shall provide a joint in all sewer mains within 2'-0" of exterior manhole wall.
- All manholes shall be 4'-0" inside diameter unless otherwise noted.
- Force mains shall be D.I.P. only.
- Manholes shown with 12" and 18" walls are for brick manholes only.
- Manholes designated W.T. in plan and profile shall have watertight frame and covers, Standard Detail 05-22, where watertight manhole frame and cover is used, set top of frame 1'-6" above finished grade unless otherwise noted on the drawings.
- House(s) with the symbol "C.N.S." indicates that callor cannot be served.
- THE CONTRACTOR SHALL NOTIFY THE BUREAU OF HIGHWAYS, HOWARD COUNTY AT (410) 315-2450 AT LEAST FIVE WORKING DAYS BEFORE ANY OPEN CUT OF ANY COUNTY ROAD OR BORROWING/JACKING OPERATION IN COUNTY ROADS FOR LAYING WATER/SEWER MAINS OR HOUSE CONNECTIONS. THE APPROVAL OF THESE DRAWINGS WILL CONSTITUTE COMPLIANCE WITH DIPW REQUIREMENTS PER SECTION 10114(C) OF THE HOWARD COUNTY CODE.

QUANTITIES

ITEMS	QUANTITIES ESTIMATED	AS-BUILT		
		QUANTITIES	TYPE	MANUFACTURER / SUPPLIER
8" WATER	203 LF	203 LF	WIP	GUZZINI/ITSOB
6" WATER	252 LF	252 LF	DIP	GUZZINI/ITSOB
3/4" WHC	254 LF	254 LF	R-3001	GUZZINI/ITSOB
16"x8" T. S. & V.	1 EA.	1 EA.	DIP	GUZZINI/ITSOB
8"x6" TEE	1 EA.	1 EA.	DIP	GUZZINI/ITSOB
6"x6" TEE	1 EA.	1 EA.	DIP	GUZZINI/ITSOB
8"x6" REDUCER	1 EA.	1 EA.	DIP	GUZZINI/ITSOB
6" VALVE	2 EA.	2 EA.	CAST IRON	GUZZINI/ITSOB
FIRE HYDRANT	1 EA.	1 EA.	CAST IRON	GUZZINI/ITSOB
8" SEWER	502 LF	502 LF	PVC	NATIONAL
4" SHC	240 LF	240 LF	PVC	NATIONAL
MANHOLES	4 EA. 55 VF	4 EA. 55 VF	PRECAST CONCRETE	ALANCO/ITSOB

NAME OF UTILITY CONTRACTOR : *W. J. ...*

CHECKBOX

AS-BUILT DATE

SURVEY AND DRAFTING DIVISION

WATER METER ABANDONMENT PROCEDURE
CONTRACTOR TO REMOVE EXISTING CONNECTIONS AT MAIN AND INSTALL PLUG. THE WATER METER IS TO BE RETURNED TO THE HOWARD COUNTY BUREAU OF UTILITIES.

SEWER STRUCTURE TABLE

MH #	LOCATION	RIM ELEV	SLOPE
1	N 487,434.99 E 839,086.18	18" ABOVE EX. GR.	0.0%
2	N 487,275.80 E 839,081.00	504.4	0.2%
3	N 487,120.47 E 839,076.21	314.7	0.0%
4	N 487,362.95 E 839,019.81	372.15	4.0%

WATER STRUCTURE TABLE

WATER STATION	DESCRIPTION	LOCATION	INV. ELEV.
0+00.0	16"x8" TS&V	N 487,022.40 E 838,810.56	16"-367.8 8"-368.1
2+74.0	6"-1/8" H.B.	N 487,235.79 E 838,983.29	361.1
3+09.1	6"-1/8" H.B.	N 487,270.47 E 838,976.92	360.5
3+12.5	6"x6" T	N 487,272.33 E 838,974.07	360.5
3+90.5	4" PLUG & BUTTRESS	N 487,314.87 E 838,908.70	360.6
0+61.8	6" PLUG & BUTTRESS	N 487,311.16 E 838,999.32	359.1

Sediment control measures for this contract will be implemented in accordance with Section 219 of the Specifications and as shown on F-95-28.

Shuffe R. Selby 2/5/93
HOWARD SOIL CONSERVATION DISTRICT

Review for Howard Soil Conservation District and meets technical requirements.

John M. Hill 2/5/93
U.S. SOIL CONSERVATION SERVICE

This plan is approved for soil erosion and sediment control by the Howard Soil Conservation District.

Shuffe R. Selby 2/5/93
HOWARD SOIL CONSERVATION DISTRICT

DEPARTMENT OF PUBLIC WORKS
HOWARD COUNTY, MARYLAND

James A. ... 2/9/93
DIRECTOR OF PUBLIC WORKS

Robert ... 2-1-93
CHIEF, BUREAU OF UTILITIES

Arthur E. Muegge 2-2-93
CHIEF, BUREAU OF ENGINEERING

Arthur E. Muegge 2/9/93
CHIEF, LAND DEVELOPMENT

RIEMER MUEGGE & ASSOCIATES, INC.
A Land Planning, Engineering and Consulting Firm
8818 Centre Park Drive • Suite 200 • Columbia, Md 21045
410-997-8900 FAX : 410-997-9282

ARTHUR E. MUEGGE/8707

DES: WCW
DRN: WCW
CHK: CJR
DATE: 1-15-93

BY: NO. REVISION DATE

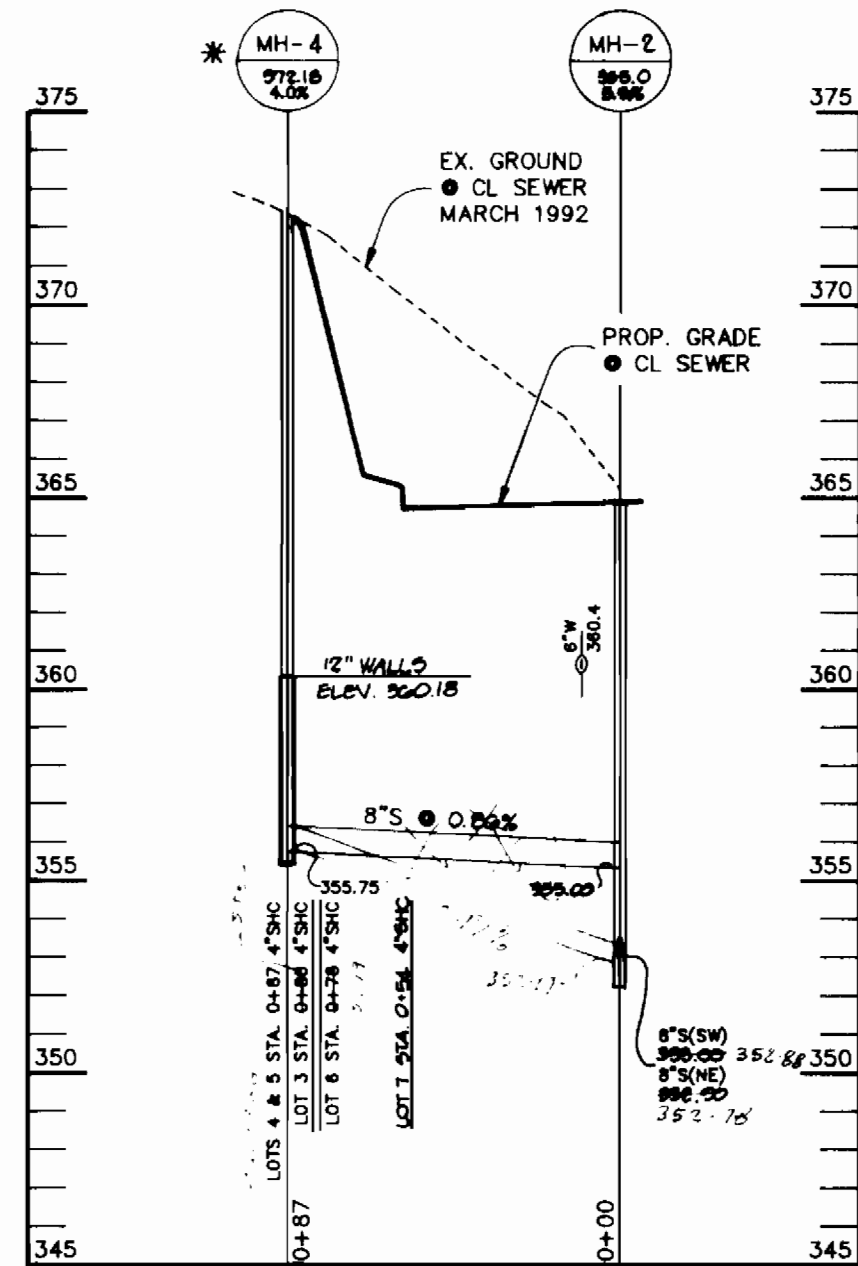
PLAN OF
WATER & SEWER MAINS

600' SCALE MAP NO. 42 BLOCK NO. 7 & 8

COLES PROPERTY
LOTS 1 - 15
6th ELECTION DISTRICT
HOWARD COUNTY, MARYLAND
CONTRACT NO. 24-3211-D

SCALE AS SHOWN
SHEET 1 OF 2

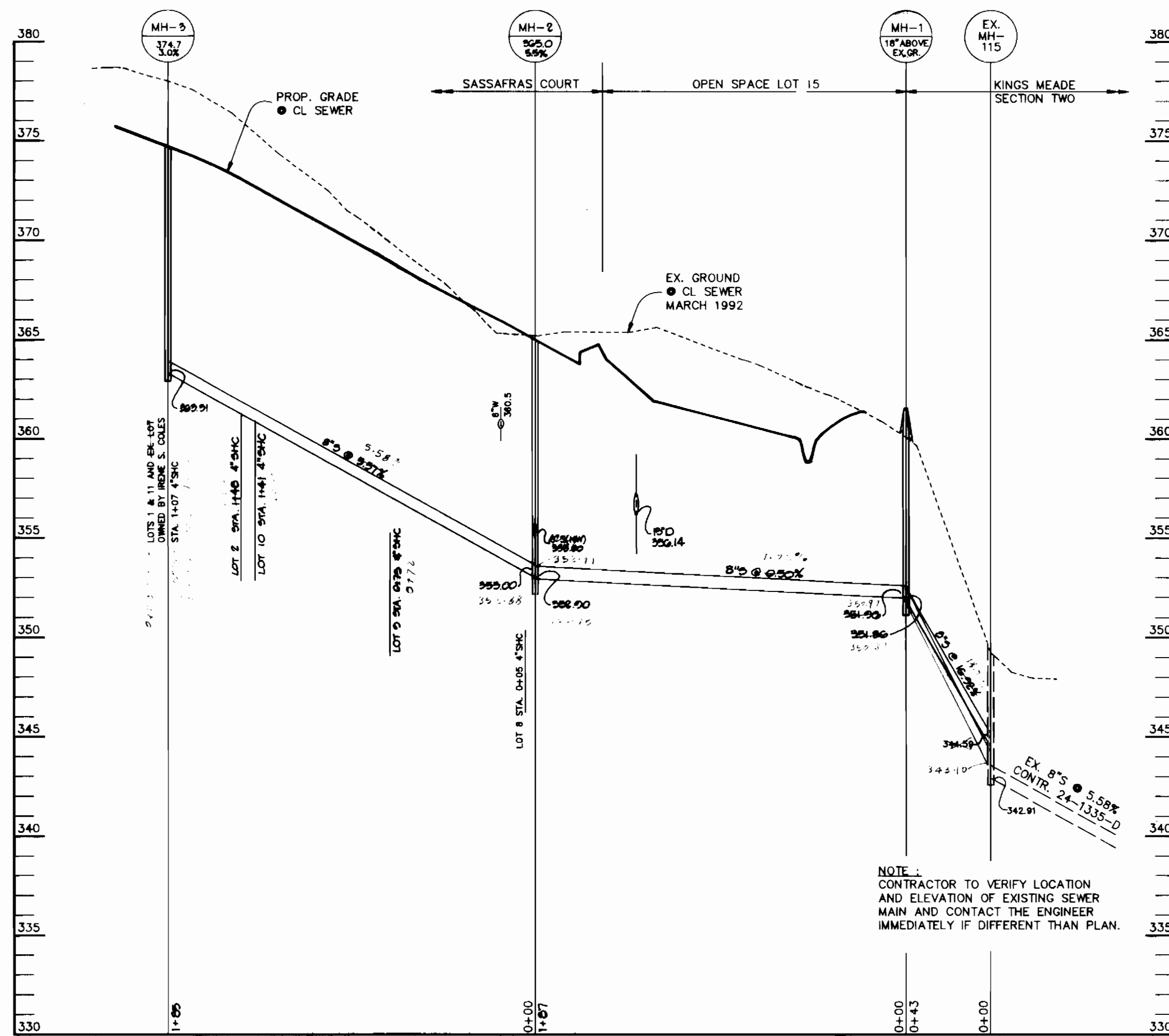
AS-BUILT



* NOTE: MH-4 TO BE ADJUSTED TO MEET FINAL SITE PLAN GRADING.

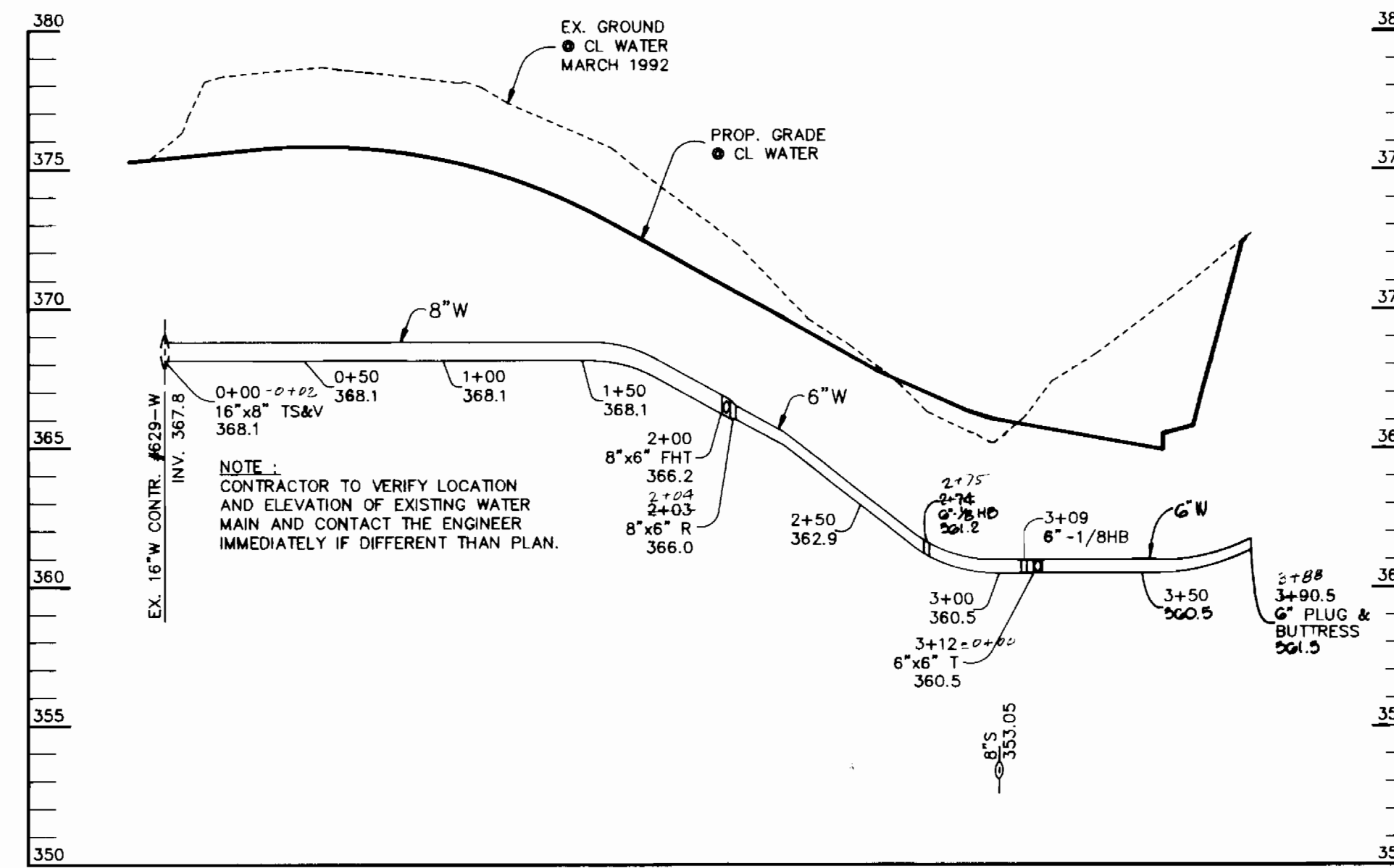
SEWER PROFILE

SCALE:
HOR.-1"=50'
VERT.-1"=5'



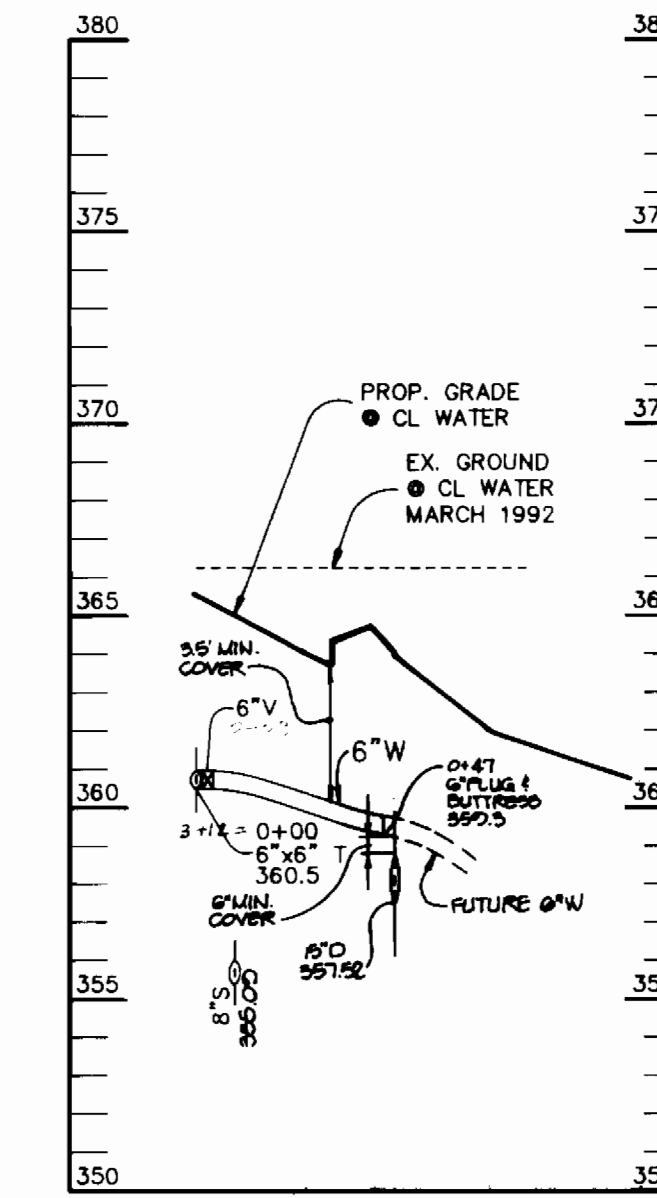
SEWER PROFILE

SCALE:
HOR.-1"=50'
VERT.-1"=5'



WATER PROFILE

SCALE:
HOR.-1"=50'
VERT.-1"=5'



WATER PROFILE

SCALE:
HOR.-1"=50'
VERT.-1"=5'

WATER & SEWER AS BUILT

DEPARTMENT OF PUBLIC WORKS
HOWARD COUNTY, MARYLAND

Director of Public Works: Robert B. ... 2/9/93
Chief, Bureau of Engineering: ... 2-8-93
Chief, Bureau of Utilities: ... 2-1-93
Chief, Land Development: ... 2/9/93

RIEMER MUEGGE & ASSOCIATES, INC.
A Land Planning, Engineering and Consulting Firm
8818 Centre Park Drive • Suite 200 • Columbia, Md 21046
410-997-8900 FAX: 410-997-9282



DES: WCW			
DRN: WCW			
CHK: CJR			
DATE: 1-15-93	BY NO.	REVISION	DATE

PROFILE OF
WATER & SEWER MAINS

600' SCALE MAP NO. 42 BLOCK NO. 7 & 8

COLES PROPERTY
LOTS 1 - 15
6th ELECTION DISTRICT
HOWARD COUNTY, MARYLAND
CONTRACT NO. 24-3211-D

SCALE AS SHOWN
SHEET 2 OF 2

AS-BUILT