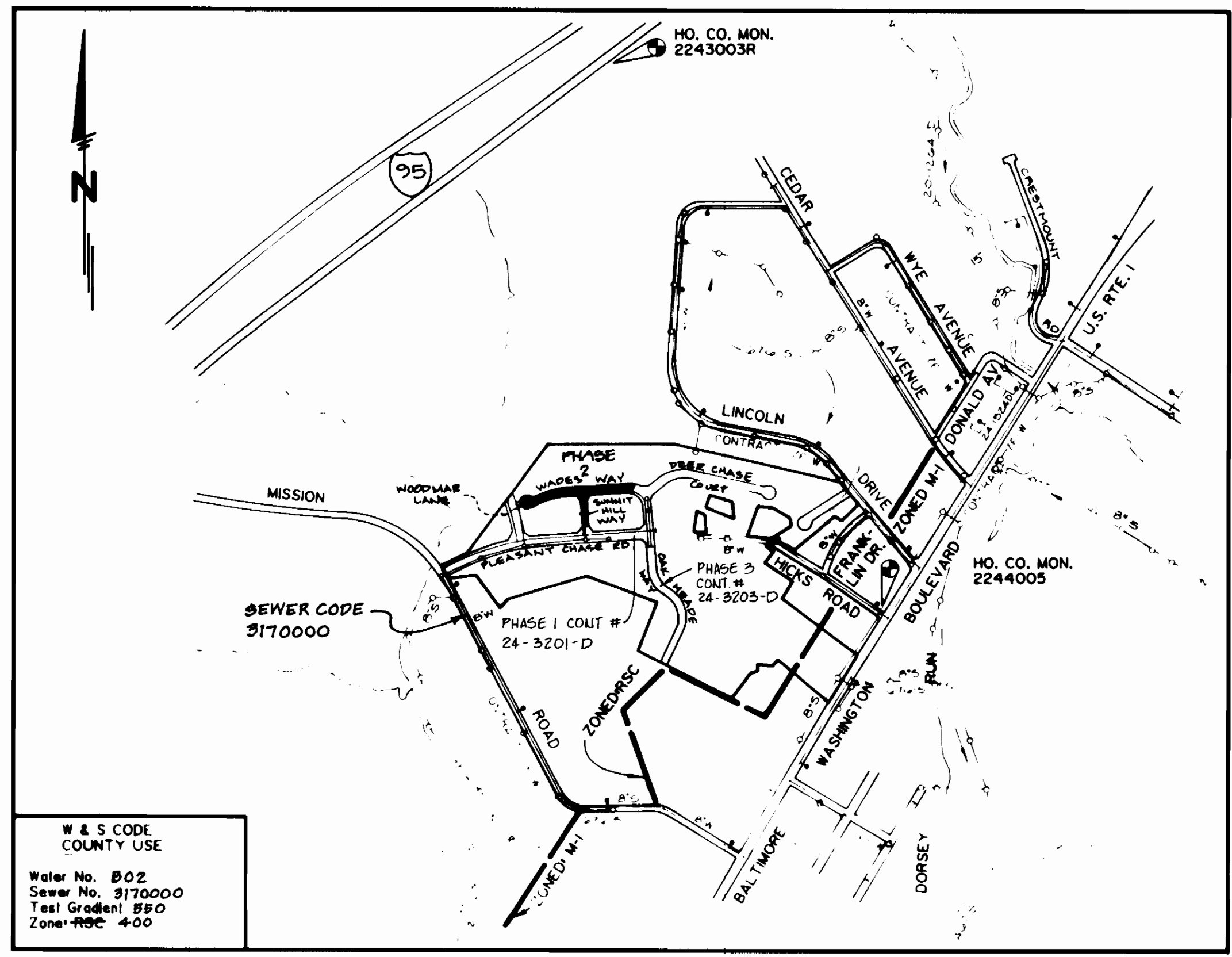


INDEX OF SHEETS	
SHEET NO.	TITLE
1	TITLE SHEET
2	PLAN VIEW
3	PROFILES

WATER AND SEWER EXTENSIONS PLEASANT CHASE

SECTION ONE 6TH ELECTION DISTRICT HOWARD COUNTY, MARYLAND PHASE TWO (CONTRACT NO. 24-3202-D)

QUANTITIES				
ITEMS	QUANTITIES ESTIMATED	AS - BUILT		
		QUANTITIES	TYPE	MANUFACTURER/SUPP.
8" WATER	840 L.F.	707 L.F.	D.I.P.	GRIFFEN PIPE
6" WATER	18 L.F.	17 L.F.	D.I.P.	GRIFFEN PIPE
1 1/2" W.H.C.	575 L.F.	577 L.F.	1/2" COPPER	HOWELL METAL BROS.
8" VALVES	2	2 E.A.		MUELLER
6" VALVES	1	1 E.A.		MUELLER
FIRE HYDRANTS	1	1 E.A.		MUELLER
8" SEWER	714 L.F.	713 L.F.	PVC	JMMON FACTURING E.C.E.
4" SHC	1318 L.F.	1321 L.F.	PVC	JMMON FACTURING E.C.E.
MANHOLES	3 ea. 25 V.F.	3 E.A.	PRECAST CONCRETE	ATLANTIC CONCRETE
1" W.H.C.	458 L.F.	472 L.F.	1/2" COPPER	HOWELL METAL BROS.
NAME OF UTILITY CONTRACTOR: C.C.S.				
SURVEY & DRAFTING DIV. AS - BUILT DATA				



VICINITY MAP
SCALE: 1" = 600'

- GENERAL NOTES
- APPROXIMATE LOCATION OF EXISTING MAINS ARE SHOWN. THE CONTRACTOR SHALL TAKE ALL NECESSARY PRECAUTIONS TO PROTECT EXISTING MAINS AND SERVICES AND MAINTAIN UNINTERRUPTED SUPPLY. ANY DAMAGES INCURRED SHALL BE REPAIRED IMMEDIATELY TO THE SATISFACTION OF THE ENGINEER AT THE CONTRACTORS EXPENSE.
 - ALL HORIZONTAL CONTROLS ARE BASED ON MARYLAND STATE COORDINATES.
 - ALL VERTICAL CONTROLS ARE BASED ON U.S.C.S.S. DATA.
 - ALL PIPE ELEVATIONS SHOWN ARE INVERT ELEVATIONS.
 - CLEAR ALL UTILITIES BY A MINIMUM OF 6". CLEAR ALL POLES BY 2'-0" MINIMUM OR TUNNEL AS REQUIRED. THE OWNER HAS CONTACTED THE UTILITY COMPANIES AND HAS MADE ARRANGEMENTS FOR BRACING OF POLES AS SHOWN ON THE DRAWINGS. IN THE EVENT THE CONTRACTORS WORK REQUIRES THE BRACING OF ADDITIONAL POLES, ANY COST INCURRED BY THE OWNER FOR BRACING OF ADDITIONAL POLES OR DAMAGES SHALL BE DEDUCTED FROM MONEY OWED THE CONTRACTOR. THE CONTRACTOR SHALL COORDINATE WITH THE UTILITY COMPANIES TO SCHEDULE THE BRACING OF THE POLES.
 - FOR DETAILS NOT SHOWN ON THE DRAWINGS, AND FOR MATERIALS AND CONSTRUCTION METHODS USE HOWARD COUNTY DESIGN MANUAL, VOLUME IV, STANDARD SPECIFICATIONS AND DETAIL FOR CONSTRUCTION. (LATEST EDITION). THE CONTRACTOR SHALL HAVE A COPY OF VOLUME IV ON THE JOB.
 - WHERE TEST PITS HAVE BEEN MADE ON EXISTING UTILITIES, THEY ARE NOTED BY THE SYMBOL AT THE LOCATION OF THE TEST PIT. A NOTE OR NOTES CONTAINING THE RESULTS OF THE TEST PIT OR PITS IS INCLUDED ON THE DRAWINGS. EXISTING UTILITIES IN THE VICINITY OF THE PROPOSED WORK FOR WHICH TEST PITS HAVE NOT BEEN DUG SHALL BE LOCATED BY THE CONTRACTOR TWO WEEKS IN ADVANCE OF CONSTRUCTION OPERATIONS AT HIS OWN EXPENSE.
 - CONTRACTOR SHALL NOTIFY THE FOLLOWING UTILITY COMPANIES OR AGENCIES AT LEAST FIVE WORKING DAYS BEFORE STARTING WORK SHOW ON THESE PLANS:
STATE HIGHWAY ADMINISTRATION 531-5533
BALTIMORE GAS & ELECTRIC CONTRACTOR SERVICES 856-4620
BALTIMORE GAS & ELECTRIC UNDERGROUND DAMAGE 767-9068
CONTROL
MISS UTILITY 1-800-257-7777
COLONIAL PIPELINE CO. 795-1390
BUREAU OF UTILITIES, HOWARD COUNTY DEPARTMENT OF PUBLIC WORKS 313-4900
 - TREES AND SHRUBS ARE TO BE PROTECTED FROM DAMAGE TO MAXIMUM EXTENT. TREES AND SHRUBS LOCATED WITHIN THE CONSTRUCTION STRIP ARE NOT TO BE REMOVED OR DAMAGED BY THE CONTRACTOR.
 - CONTRACTOR SHALL REMOVE TREES, STUMPS AND ROOTS ALONG LINE OF EXCAVATION. PAYMENT FOR SUCH REMOVAL SHALL BE INCLUDED IN THE UNIT PRICE BID FOR CONSTRUCTION OF THE MAIN.
 - ALL WATER MAINS TO BE D.I.P. CLASS 52 UNLESS OTHERWISE NOTED.
 - TOPS OF ALL WATER MAINS TO HAVE A MINIMUM OF 3'-2" COVER UNLESS OTHERWISE NOTED.
 - VALVES ADJACENT TO TEES SHALL BE STRAPPED TO TEES.
 - ALL FITTINGS SHALL BE BUTTRESSED OR ANCHORED WITH CONCRETE IN ACCORDANCE WITH THE STANDARD DETAILS UNLESS OTHERWISE PROVIDED FOR ON THE DRAWINGS.
 - FIRE HYDRANTS SHALL BE SET TO THE BURY LINE ELEVATIONS SHOWN ON THE DRAWINGS. ALL FIRE HYDRANTS SHALL BE RESTRAINING WITH CONCRETE IN ACCORDANCE WITH STANDARD DETAILS. SOIL AROUND THE FIRE HYDRANT SHALL BE COMPACTED IN ACCORDANCE WITH SECTION 1000 AND 1005 OF THE STANDARD SPECIFICATIONS.
 - THE CONTRACTOR SHALL NOT OPERATE ANY WATER MAIN VALVES ON THE EXISTING WATER SYSTEM.
 - ALL WATER HOUSE CONNECTIONS SHALL BE FOR INSIDE METER SETTING UNLESS OTHERWISE NOTED ON PLANS OR IN SPECIFICATIONS.
 - ALL SEWER MAINS SHALL BE DIP, RCP, VCPX, CSPX, RCCP AND P.V.C. UNLESS OTHERWISE NOTED.
 - THE CONTRACTOR SHALL PROVIDE A JOINT AT EACH MANHOLE JUNCTION WITHIN 1'-0" OF EXTERIOR MANHOLE RIM.
 - ALL MANHOLES SHALL BE 4'-0" INSIDE DIAMETER UNLESS OTHERWISE NOTED.
 - MANHOLES SHOWN WITH 12" AND 16" WALLS ARE FOR BRICK MANHOLES ONLY.
 - MANHOLES DESIGNATED W.T. IN PLAN AND PROFILE SHALL HAVE WATER TIGHT FRAME AND COVERS, STANDARD DETAIL 05.52. WHERE WATER TIGHT MANHOLE FRAME AND COVER IS USED, SET TOP OF FRAME 17'-6" ABOVE FINISHED GRADE UNLESS OTHERWISE NOTED ON DRAWINGS.
 - HOUSE(S) WITH THE SYMBOL "C.N.S." INDICATES THAT CELLAR CANNOT BE SERVED.
 - THE CONTRACTOR SHALL NOTIFY THE BUREAU OF HIGHWAYS, HOWARD COUNTY, AT (410) 919-2850 AT LEAST FIVE WORKING DAYS BEFORE ANY OPEN CUT OF ANY COUNTY ROAD OR BORING/JACKING OPERATION IN COUNTY ROADS FOR LAYING WATER/SEWER MAINS OR HOUSE CONNECTIONS. THE APPROVAL OF THESE DRAWINGS WILL CONSTITUTE COMPLIANCE WITH ALL REQUIREMENTS PER SECTION 18.114(A) OF THE HOWARD COUNTY CODE.

Sediment control measures for this contract will be implemented in accordance with section 219 of the Specifications and as shown on F-98-146

HOWARD SOIL CONSERVATION DISTRICT
Review for Howard Soil Conservation District and meets technical requirements.
Patricia Engelman 5/6/94
U.S. SOIL CONSERVATION SERVICE DATE
This plan is approved for soil erosion and sediment control by the Howard Soil Conservation District.
John R. Robertson 5/6/94
HOWARD SOIL CONSERVATION DISTRICT DATE

THESE REVISED WATER AND SEWER CONSTRUCTION PLANS (SHEETS 1 THRU 3) CONTRACT 24-3202-D PLEASANT CHASE SECTION 1 PHASE TWO WILL SUPERSEDE THE WATER AND SEWER CONSTRUCTION PLANS APPROVED AND SIGNED BY THE DIRECTOR OF PUBLIC WORKS ON 11/17/92.

- HOWARD COUNTY CONTROL MONUMENTS
- HOWARD COUNTY MONUMENT NO. 2243003R ELEV. 301.486 FLUSH 2.5' EAST OF EAST EDGE MACADAM OF NORTH BOUND LANE N 487448.365 E 856755.255
 - HOWARD COUNTY MONUMENT NO. 2244005 ELEV. 217.572 2'-2" BELOW SURFACE, 10.8' WEST OF NAIL & CAP ON EDGE MACADAM SOUTH BOUND LANE N 489175.968 E 859442.539

TYPE OF BUILDING: TOWNHOUSES
NO. OF LOTS/PARCELS: 30
NO. OF W.H.C.: 30 - 17 TWIN, 5 SINGLE
NO. OF SHC: 30
DRAINAGE AREA: DORSEY, LITTLE PATUXENT VIA DORSEY PUMPING STATION
TREATMENT PLANT: LITTLE PATUXENT WATER QUALITY MANAGEMENT CENTER SAVAGE, HOWARD COUNTY

DEPARTMENT OF PUBLIC WORKS
HOWARD COUNTY, MARYLAND
James A. Sullivan 5/10/94
DIRECTOR OF PUBLIC WORKS DATE
Robert J. Brown 5-3-94
CHIEF, BUREAU OF UTILITIES DATE

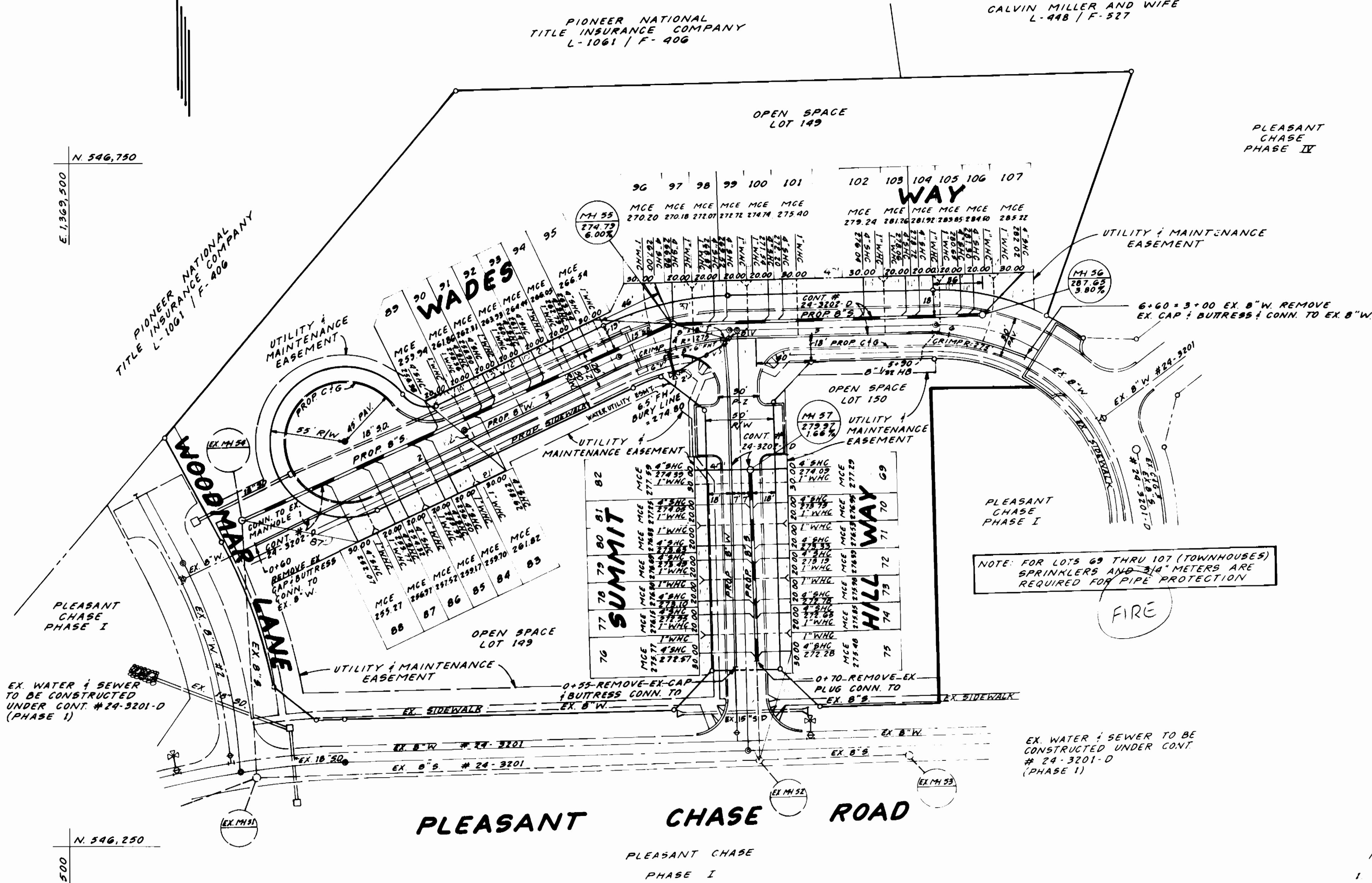
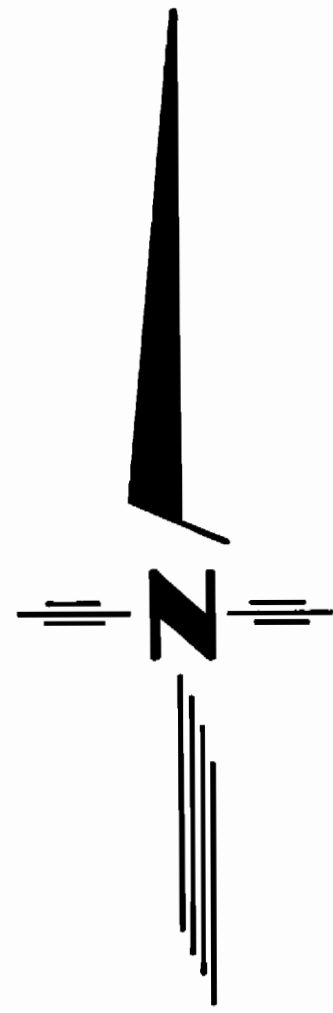


DES: M.W.E.	
DRN: M.W.E.	
CHK: J.P.H.	
DATE: 6-92	

BY: NO.	REVISION	DATE

PHASE TWO
PLEASANT CHASE
SECTION ONE
6TH ELECTION DISTRICT
HOWARD COUNTY, MARYLAND
CONTRACT NO. 24-3202-D

SCALE AS SHOWN
SHEET 1 OF 3



- NOTES:
1. THE INLET SIZE OF TWIN WATER HOUSE CONNECTION SHALL BE 1 1/2" SIZE AND OUTLET SHALL BE 1" SIZE WITH 3/4" METER AS PER STD. DET. W-3-23.
 2. AS THE WATERMAIN INV. ELEV. IS EQUAL OR GREATER THAN 262 FOR 400 WATER ZONE, THE MIN. SIZE OF THE WATER HOUSE CONN. SHALL BE 1" DIAMETER.

PLAN VIEW
SCALE: 1" = 50'

MANHOLE TABLE

NO.	LOCATION
55	10' RIGHT OF & STA. 5+82 WADES WAY
56	10' RIGHT OF & STA. 3+59 WADES WAY
57	7' RIGHT OF & STA. 2+05 SUMMIT HILL WAY

PHASE TWO

DEPARTMENT OF PUBLIC WORKS
HOWARD COUNTY, MARYLAND

James A. Lewis
DIRECTOR OF PUBLIC WORKS

5/10/94
DATE

Robert Benjamin
CHIEF, BUREAU OF UTILITIES

5/1/94
DATE

5/10/94
DATE

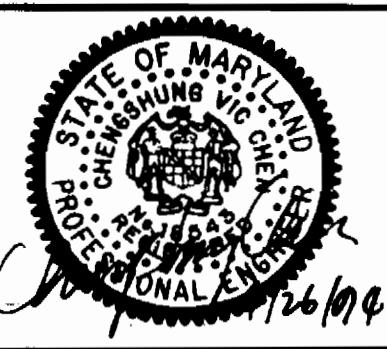
Chief, Bureau of Engineering

Chief, Land Development

LAND SERVICES GROUP, INC.

ENGINEERS - PLANNERS - SURVEYORS

1001 BROADLAND PARKWAY - SUITE 105
COLUMBIA, MARYLAND 21046



DESIGNED BY: J.P.H.	DATE: 3-92
DRAWN BY: M.E.S.	BY: NO.
CHECKED BY: B.B.S.	REVISION
DATE: 3-92	DATE

PLAN OF
WATER AND SEWER MAINS

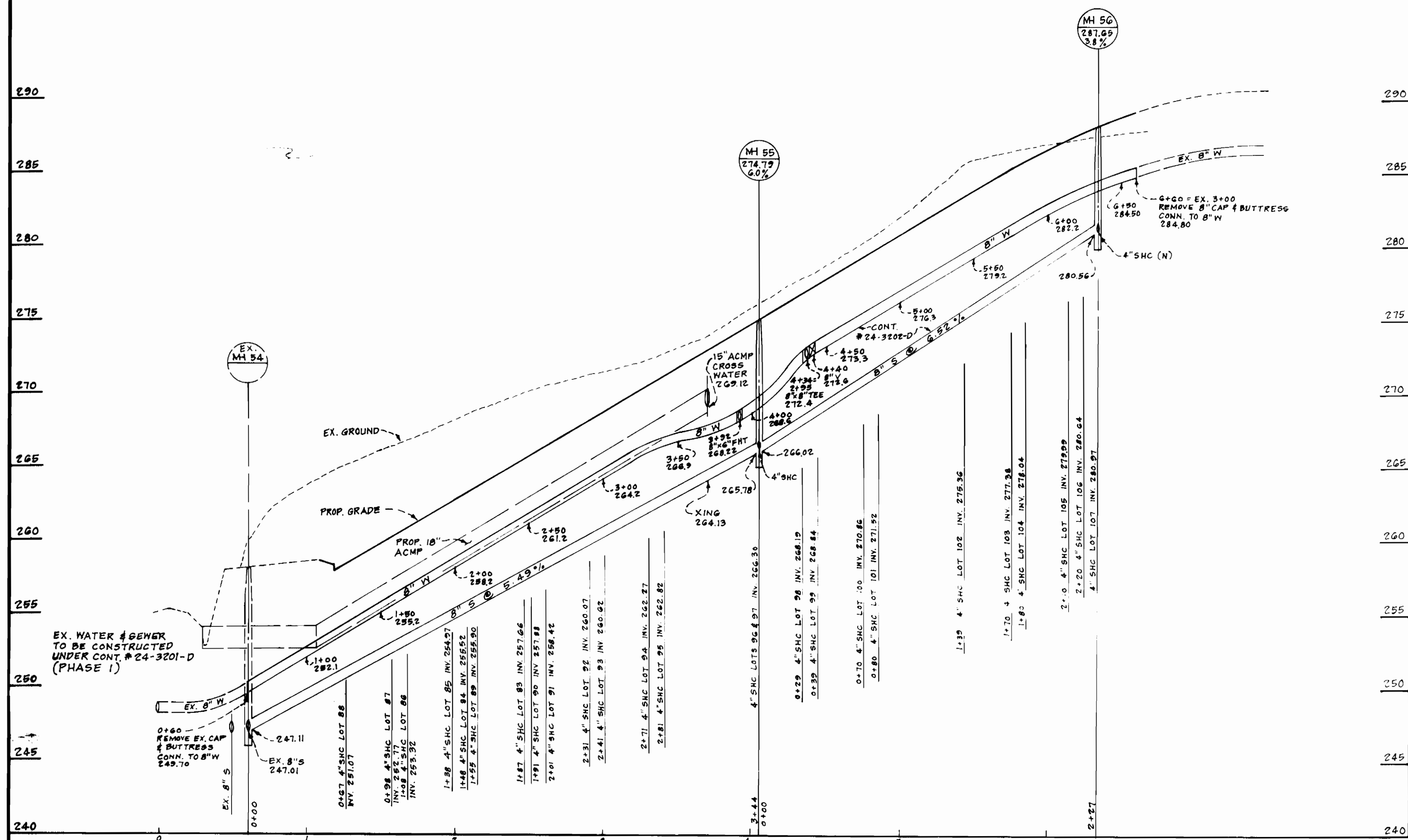
600' SCALE MAP NO. 43 BLOCK NO.

PLEASANT CHASE
SECTION ONE
6TH ELECTION DISTRICT
HOWARD COUNTY, MARYLAND

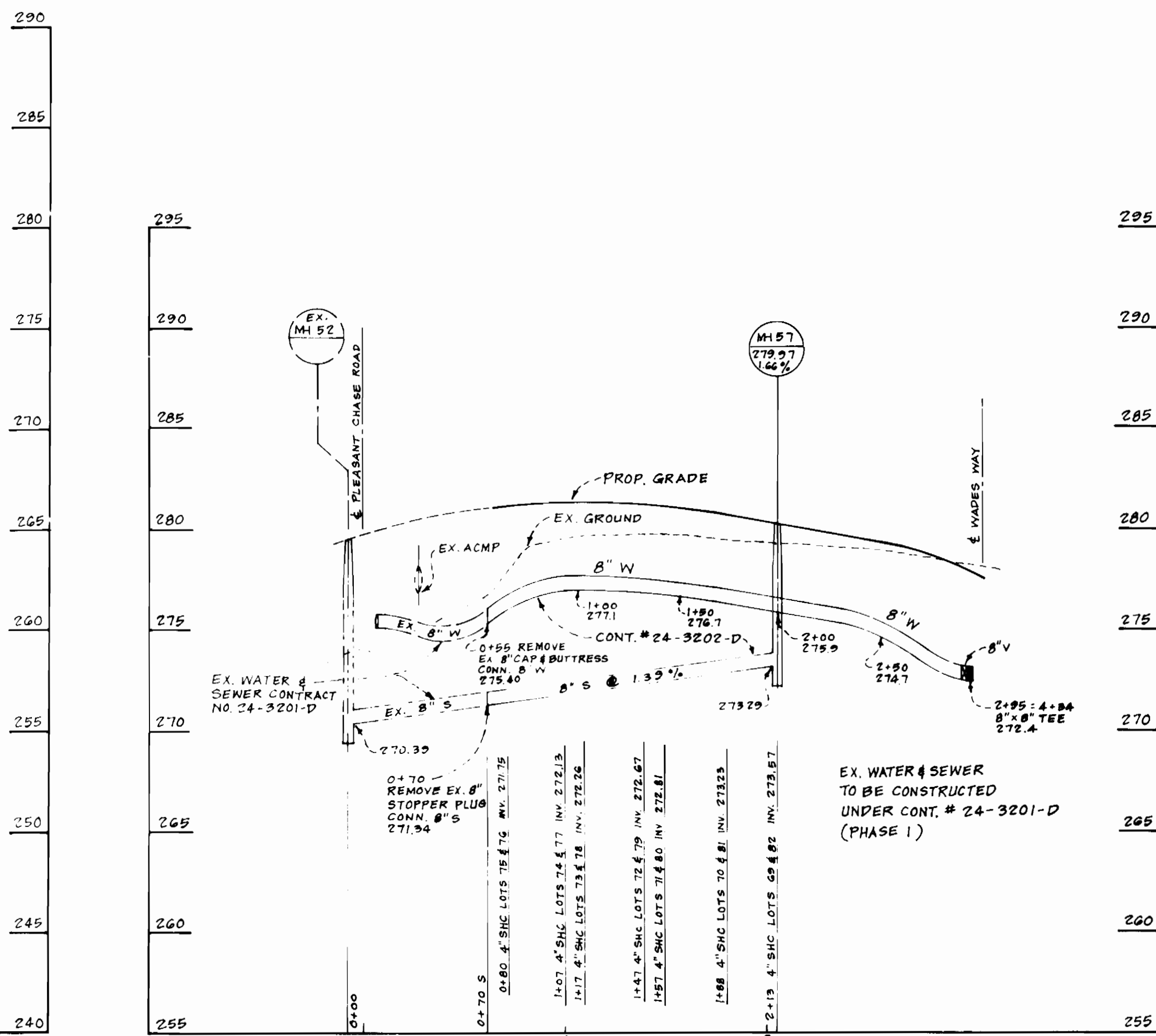
CONTRACT NO. 24-3202-D

SCALE AS SHOWN

SHEET 2 OF 3



WAIDES WAY
PROFILES
SCALE: 1" = 50' H
1" = 5' V



SUMMIT HILL WAY
PROFILE
SCALE: 1" = 50' H
1" = 5' V

PHASE TWO

DEPARTMENT OF PUBLIC WORKS
HOWARD COUNTY, MARYLAND
5/10/94
5-3-94

LAND SERVICES GROUP, INC.
ENGINEERS - PLANNERS - SURVEYORS
5/10/94



DES: J.P.H.
DRN: M.E.S.
CHK: B.B.S.
DATE: 3-92

BY: NO. _____
REVISION _____
DATE _____

PROFILES OF WATER AND SEWER MAINS
600' SCALE MAP NO. 43 BLOCK NO. _____

PLEASANT CHASE SECTION ONE
6TH ELECTION DISTRICT
HOWARD COUNTY, MARYLAND
CONTRACT NO. 24-3202-D
SCALE AS SHOWN
SHEET 3 OF 3