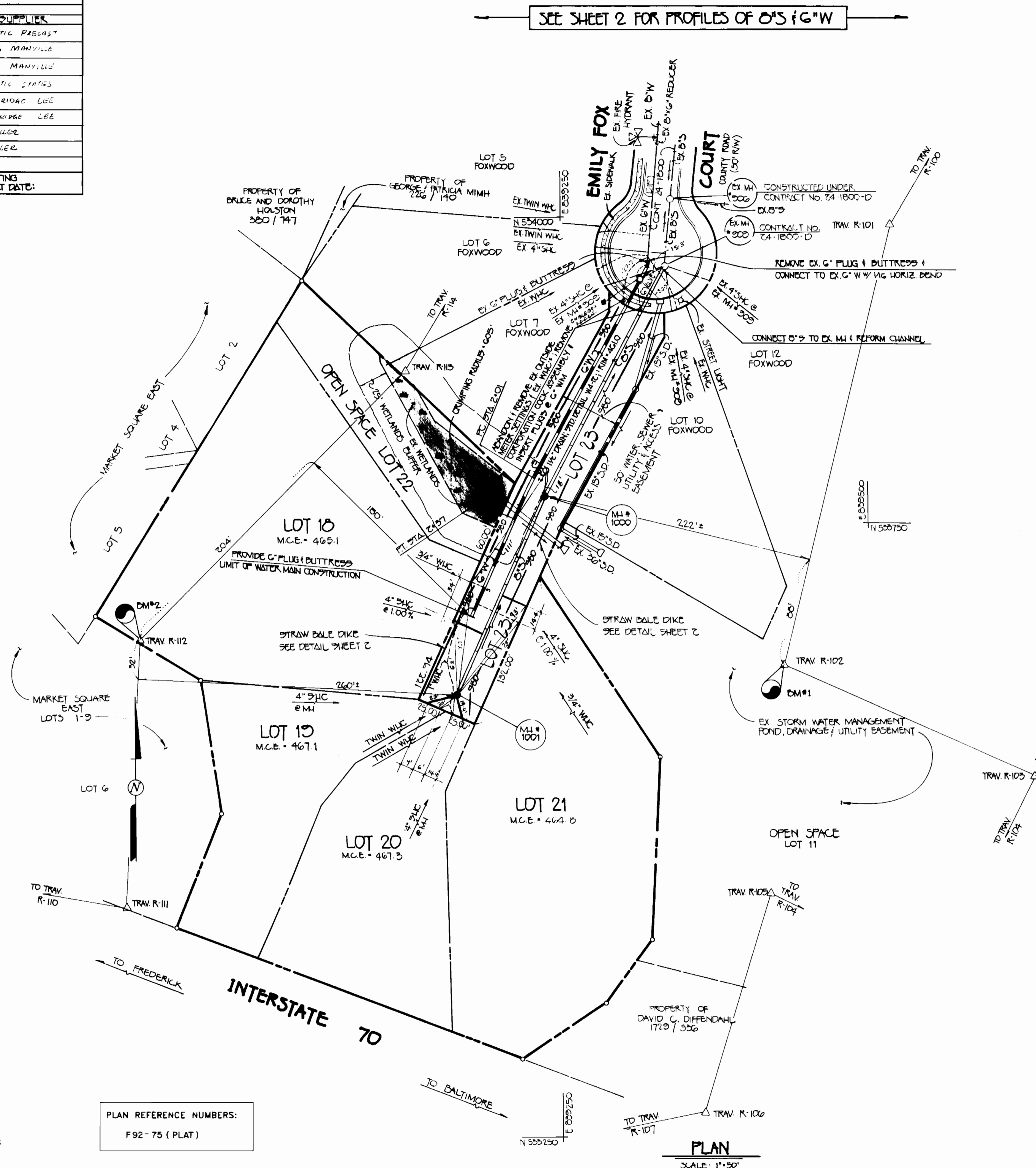


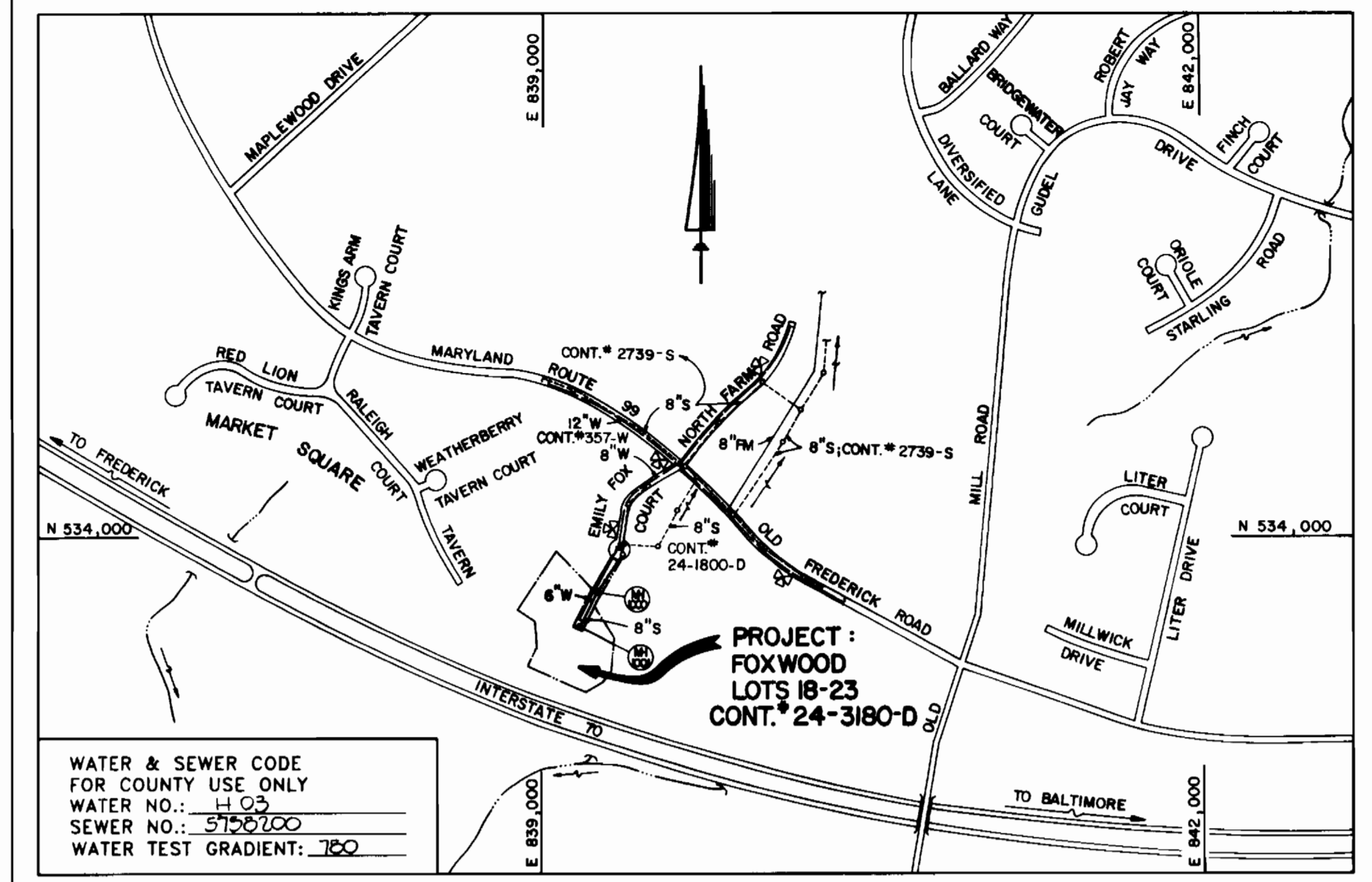
QUANTITIES				
ITEM	ESTIMATED	QUANTITY	AS-BUILT	SUPPLIER
MANHOLES	2 EACH	2 EA	-	ATLANTIC PRECAST
8" SEWER	300 LF	310 LF	PVC	JOHN'S MANVILLE
4" SEWER	30 LF	30 LF	PVC	JOHN'S MANVILLE
6" WATER	325 LF	325 LF	CL 52	ATLANTIC STATES
3/4" WATER	70 LF	70 LF	7/8" LAMBE	LAMBERG LEE
1" WVC	05 LF	05 LF	1/2" COPPER	LAMBERG LEE
6" VALVE	1 EACH	1 EA		MUELLER
1 1/2" DRAIN	1 EACH	1 EA		MUELLER

WVCs/METER SETTING TO BE ABANDONED	
OLD LOT NUMBER	ADDRESS
8	10025 EMILY FOX COURT
7	10029 EMILY FOX COURT

S.H.C. INVERT ELEVATIONS @ PROPERTY LINE		
STATION	LOT	ELEVATION
M4 # 1000	TO M4 # 1001	
0+00 LT.	(1 @ 1.00%)	450.71
1+23 RT.	(1 @ 1.00%)	450.97
@ M4 1001 RT.	10	460.76
@ M4 1001 LT.	20	460.66



SEE SHEET 2 FOR PROFILES OF 8" & 6" W



WATER & SEWER CODE FOR COUNTY USE ONLY
 WATER NO.: 4103
 SEWER NO.: 5106700
 WATER TEST GRADIENT: 180

VICINITY MAP

SCALE: 1"=600'

GENERAL NOTES

- APPROXIMATE LOCATION OF EXISTING MAINS ARE SHOWN. THE CONTRACTOR SHALL TAKE ALL NECESSARY PRECAUTIONS TO PROTECT EXISTING MAINS AND SERVICES AND MAINTAIN UNINTERRUPTED SUPPLY. ANY DAMAGE INCURRED SHALL BE REPAIRED IMMEDIATELY TO THE SATISFACTION OF THE ENGINEER AT THE CONTRACTOR'S EXPENSE.
- ALL HORIZONTAL CONTROLS ARE BASED ON MARYLAND STATE COORDINATES.
- ALL VERTICAL CONTROLS ARE BASED ON U.S.G.S. DATUM.
- ALL PIPE ELEVATIONS ARE INVERT ELEVATIONS.
- CLEAR ALL UTILITIES BY A MINIMUM OF 6". CLEAR ALL POLES BY 2'-0" MINIMUM OR TUNNEL AS REQUIRED.
- FOR DETAILS NOT SHOWN ON THE DRAWINGS, AND FOR MATERIALS AND CONSTRUCTION METHODS, USE HOWARD COUNTY DESIGN MANUAL, VOLUME IV, STANDARD SPECIFICATIONS AND DETAILS FOR CONSTRUCTION (1989 AMENDMENTS) THE CONTRACTOR SHALL HAVE A COPY OF VOLUME IV ON THE JOB SITE.
- WHERE TEST PITS HAVE BEEN MADE ON EXISTING UTILITIES, THEY ARE NOTED BY THE SYMBOL AT THE LOCATION OF THE TEST PIT. A NOTE OR NOTES CONTAINING THE RESULTS OF THE TEST PIT OR PITS IS INCLUDED ON THE DRAWINGS. EXISTING UTILITIES IN THE VICINITY OF THE PROPOSED WORK FOR WHICH TEST PITS HAVE NOT BEEN DUG SHALL BE VERIFIED BY THE CONTRACTOR TO HIS OWN SATISFACTION. ANY DAMAGE TO EXISTING FACILITIES DUE TO THE CONTRACTOR'S NEGLIGENCE SHALL BE REPAIRED AT THE CONTRACTOR'S EXPENSE. CONTRACTOR SHALL NOTIFY THE FOLLOWING UTILITIES OR AGENCIES AT LEAST FIVE WORKING DAYS BEFORE STARTING WORK SHOWN ON THESE PLANS:
- STATE HIGHWAY ADMINISTRATION - 531-5533
- BALTIMORE GAS & ELECTRIC CO. - CONTRACTOR SERVICES - 850-4620
- BALTIMORE GAS & ELECTRIC CO. - UNDER GROUND DAMAGE CONTROL - 787-9088
- MISS UTILITY - 1-800-257-7777
- COLONIAL PIPELINE CO. - 795-1390
- BUREAU OF UTILITIES, HOWARD COUNTY DEPARTMENT OF PUBLIC WORKS - 313-4900
- TREES AND SHRUBS ARE TO BE PROTECTED FROM DAMAGE TO MAXIMUM EXTENT. TREES AND SHRUBS LOCATED WITHIN THE CONSTRUCTION STRIP ARE NOT TO BE REMOVED OR DAMAGED BY THE CONTRACTOR.
- CONTRACTOR SHALL REMOVE TREES, STUMPS AND ROOTS ALONG THE LINE OF EXCAVATION. PAYMENT FOR SUCH REMOVAL SHALL BE INCLUDED IN THE UNIT PRICE BID FOR CONSTRUCTION OF THE MAIN.
- ALL SEWER MAINS SHALL BE D.I.P., R.C.P., C.S.P.X., R.C.C.P., V.C.P.X., OR P.V.C. UNLESS OTHERWISE NOTED.
- ALL MANHOLES SHALL BE 4'-0" INSIDE DIAMETER UNLESS OTHERWISE NOTED.
- MANHOLES SHOWN WITH 12" AND 16" WALLS ARE FOR BRICK MANHOLES ONLY.
- MANHOLES DESIGNATED W.T. IN PLAN AND PROFILE SHALL HAVE WATERTIGHT FRAME AND COVERS, STANDARD DETAIL G 5.52. WHERE WATERTIGHT MANHOLE FRAME AND COVER IS USED, SET TOP OF FRAME 1'6" ABOVE FINISHED GRADE UNLESS OTHERWISE NOTED ON THE DRAWINGS.
- HOUSE(S) WITH THE SYMBOL "C.N.S." INDICATES THAT THE CELLAR CANNOT BE SERVED.
- MANHOLES LOCATED WITHIN THE PROPOSED ROADWAY SHALL HAVE STANDARD HEAVY TRAFFIC MANHOLE FRAMES AND COVERS, STANDARD DETAIL G5.51.
- THE CONTRACTOR SHALL PROVIDE A JOINT IN ALL SEWER MAINS WITHIN 2'-0" OF EXTERIOR MANHOLE WALL.
- ALL WATER MAINS SHALL BE D.I.P., CLASS 52 UNLESS OTHERWISE NOTED.
- TOPS OF ALL WATER MAINS TO HAVE A MINIMUM OF 3-1/2' COVER UNLESS OTHERWISE NOTED.
- VALVES ADJACENT TO TEES SHALL BE STRAPPED TO TEES.
- ALL FITTINGS SHALL BE BUTTRESSED OR ANCHORED WITH CONCRETE IN ACCORDANCE WITH THE STANDARD DETAILS UNLESS OTHERWISE PROVIDED FOR ON THE DRAWINGS.
- FIRE HYDRANTS SHALL BE SET TO THE BURY LINE ELEVATION SHOWN ON THE DRAWINGS. ALL FIRE HYDRANTS SHALL BE STRAPPED AND BUTTRESSED WITH CONCRETE IN ACCORDANCE WITH THE STANDARD DETAILS. SOIL AROUND THE FIRE HYDRANT SHALL BE COMPACTED IN ACCORDANCE WITH SECTION 1000 AND 1005 OF THE STANDARD SPECIFICATIONS.
- THE CONTRACTOR SHALL NOT OPERATE ANY WATER MAIN VALVES ON THE EXISTING WATER SYSTEM.
- ALL D.I.P. FITTINGS SHALL BE IN ACCORDANCE WITH AWWA SPECIFICATIONS C-153; DUCTILE IRON COMPACT FITTINGS, 3-INCH THROUGH 12-INCH FOR WATER AND OTHER LIQUIDS.
- ALL WATER HOUSE CONNECTIONS SHALL BE FOR INSIDE METER SETTING, UNLESS OTHERWISE NOTED ON THE PLANS OR IN THE SPECIFICATIONS.

BENCHMARKS

BM # 1 ELEV: 442.51
 1/2" REDARK KNOWN AS TRAV R-102 LOCATED IN OPEN SPACE LOT 11 APPROXIMATELY 50' NORTH OF THE EXISTING S.W.M. POND

BM # 2 ELEV: 462.04
 1/2" REDARK KNOWN AS TRAV R-112 LOCATED IN THE SOUTH-WEST CORNER OF LOT 15 APPROXIMATELY 500' FROM E OF EMILY FOX COURT

PLAN REFERENCE NUMBERS:
 F92-75 (PLAT)

M.C.E. DENOTES MINIMUM CELLAR ELEVATION

THIS DEVELOPMENT IS APPROVED FOR EROSION AND SEDIMENT CONTROL BY HOWARD SOIL CONSERVATION DISTRICT.

APPROVED: 3/27/92
 HOWARD SOIL CONSERVATION DISTRICT DATE

SEDIMENT CONTROL MEASURES FOR THIS CONTRACT WILL BE IMPLEMENTED IN ACCORDANCE WITH SECTION 219 OF HOWARD COUNTY DESIGN MANUAL & STANDARDS AND SPECIFICATIONS FOR SOIL EROSION AND SEDIMENT CONTROL IN DEVELOPING AREAS AND ALSO AS SHOWN ON THE GRADING AND SEDIMENT CONTROL PLAN.
 REVIEWED FOR HOWARD COUNTY SOIL CONSERVATION DISTRICT AND MEETS TECHNICAL REQUIREMENTS.

APPROVED: 3/27/92
 S. SOIL CONSERVATION SERVICE DATE

DEPARTMENT OF PUBLIC WORKS
 HOWARD COUNTY, MARYLAND

3/30/92
 DIRECTOR OF PUBLIC WORKS DATE

3-23-92
 CHIEF, BUREAU OF UTILITIES DATE

3-30-92
 CHIEF, LAND DEVELOPMENT DIVISION DATE

FISHER, COLLINS & CARTER, INC.
 CIVIL ENGINEERING CONSULTANTS & LAND SURVEYORS
 SUITE 100, 9171 BALTIMORE NATIONAL PIKE
 ELLICOTT CITY, MARYLAND 21042
 (301) 461-2855

#9757
 TERRELL A. FISHER

DES: M.J.M.					
DRWN: M.J.M.					
CHK: P.W.K.					
DATE:					
BY:	NO.	REVISION	DATE	600' SCALE MAP NO.	BLOCK NO.

WATER AND SEWER MAINS
 PLAN

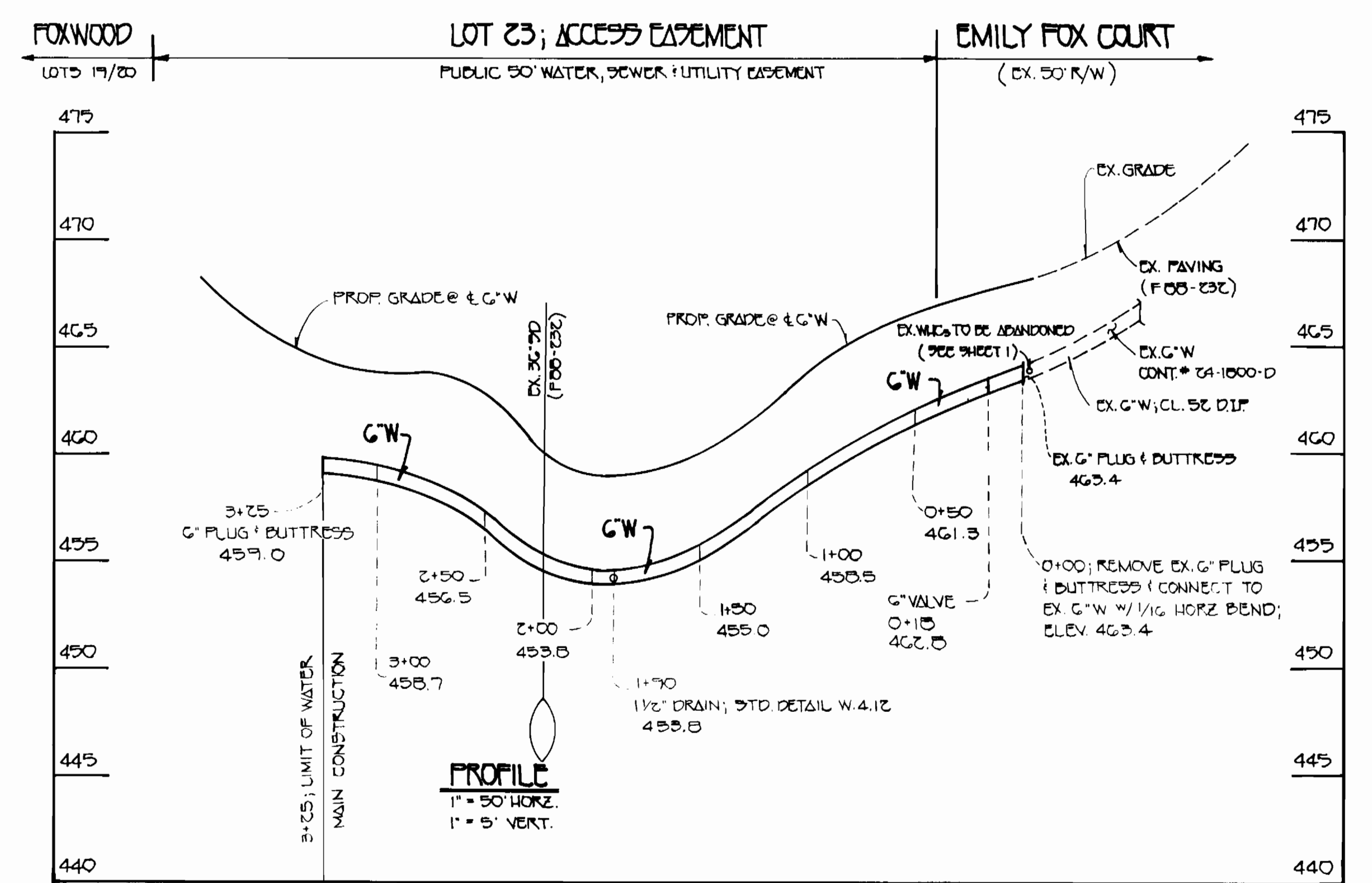
600' SCALE MAP NO. 17 BLOCK NO. 0

CONTRACT NO. 24-3180-D
 FOXWOOD: LOTS 18-23
 (A RESUBDIVISION OF LOTS 8-9)
 WATER AND SEWER EXTENSIONS
 HOWARD COUNTY, MARYLAND

SCALE AS SHOWN
 SHEET 1 OF 2

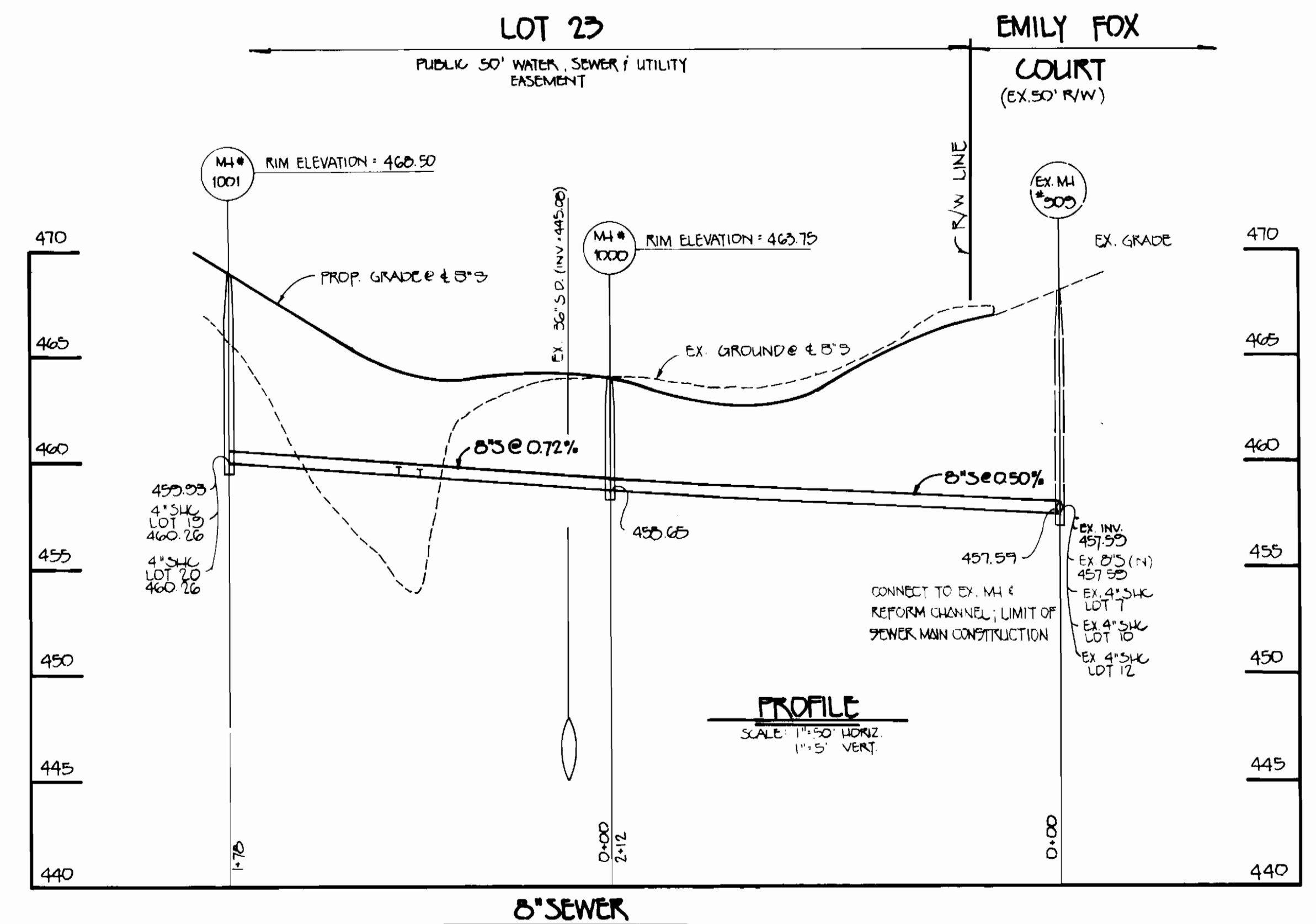
AS-BUILT 12/10/95

FOR PLAN OF G" W; SEE SHEET 1 OF 2

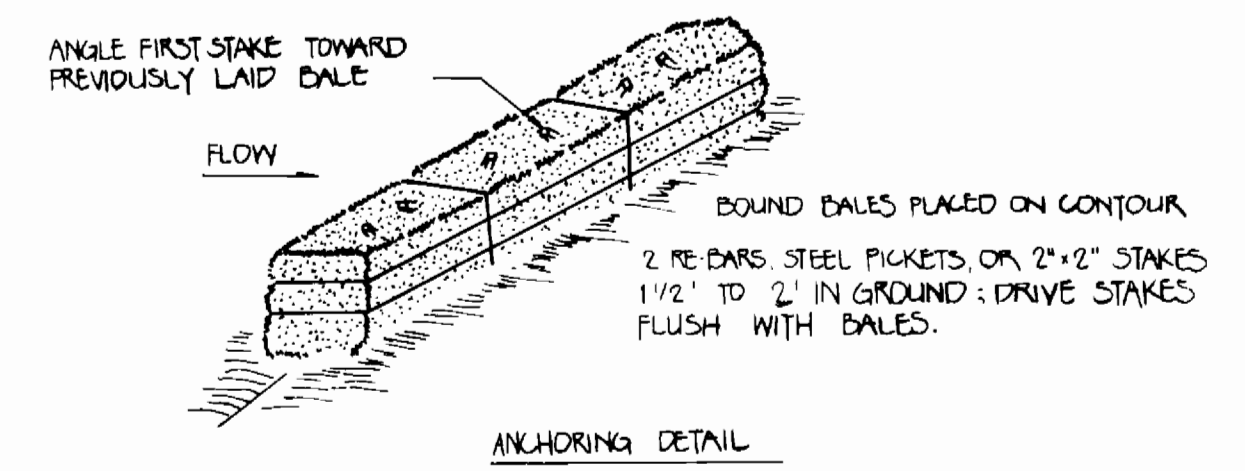
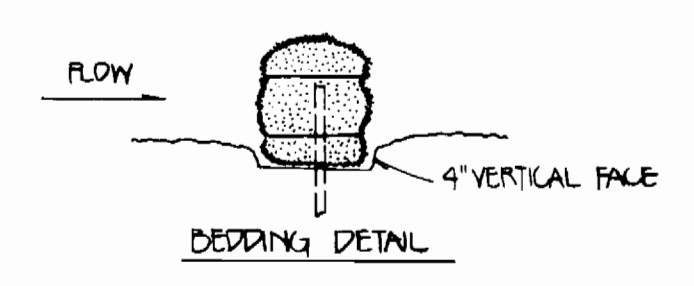


6" WATER MAIN

FOR PLAN OF 8" S; SEE SHEET 1 OF 2



8" SEWER



- STRAW DALE DIKE**
- 1) DALES SHALL BE PLACED AT TOE OF A SLOPE OR ON THE CONTOUR AND IN A ROW WITH ENDS TIGHTLY ADJUTTING THE ADJACENT DALES.
 - 2) EACH DALE SHALL BE EMBEDDED IN THE SOIL A MINIMUM OF 4 INCHES, AND PLACED SO THE BINDINGS ARE HORIZONTAL.
 - 3) DALES SHALL BE SECURELY ANCHORED IN PLACE BY EITHER TWO STAKES OR REBARS DRIVEN THRU THE DALE. THE FIRST STAKE IN EACH DALE SHALL BE DRIVEN TOWARD THE PREVIOUSLY LAID DALE AT AN ANGLE TO FORCE THE DALES TOGETHER. STAKES SHALL BE DRIVEN FLUSH WITH THE DALE.
 - 4) INSPECTION SHALL BE FREQUENT AND REPAIR REPLACEMENT SHALL BE MADE PROMPTLY AS NEEDED.
 - 5) DALES SHALL BE REMOVED WHEN THEY HAVE SERVED THEIR USEFULNESS SO AS NOT TO BLOCK OR IMPEDE STORM FLOW OR DRAINAGE.

CONTRACT NO. 24-3100-D
FOXWOOD : LOTS 18-23
(A RESUBDIVISION OF LOTS 8 & 9)
WATER AND SEWER MAIN EXTENSIONS
HOWARD COUNTY, MARYLAND

DEPARTMENT OF PUBLIC WORKS
HOWARD COUNTY, MARYLAND

3/30/92
DIRECTOR OF PUBLIC WORKS

3-23-92
CHIEF, BUREAU OF UTILITIES

3/30/92
CHIEF, BUREAU OF ENGINEERING

3/30/92
CHIEF, LAND DEVELOPMENT DIVISION

FISHER, COLLINS, AND CARTER, INC.
CONSULTING ENGINEERS AND LAND SURVEYORS
2171 BALTIMORE NATIONAL PIKE, SUITE 100
ELLICOTT CITY, MARYLAND 21042

TERRELL A. FISHER

DES: MJM					
DRN: MJM					
CHK: FWK					
DATE:	BY	NO.	REVISION	DATE	

**WATER & SEWER MAINS
PROFILES**

600' SCALE MAP NO. 17 BLOCK NO. 8

FOXWOOD : LOTS 18-23
(A RESUBDIVISION OF LOTS 8 & 9)
CONTRACT NO. 24-3100-D
SECOND ELECTION DISTRICT
HOWARD COUNTY, MARYLAND

SCALE AS SHOWN
SHEET 2 OF 2