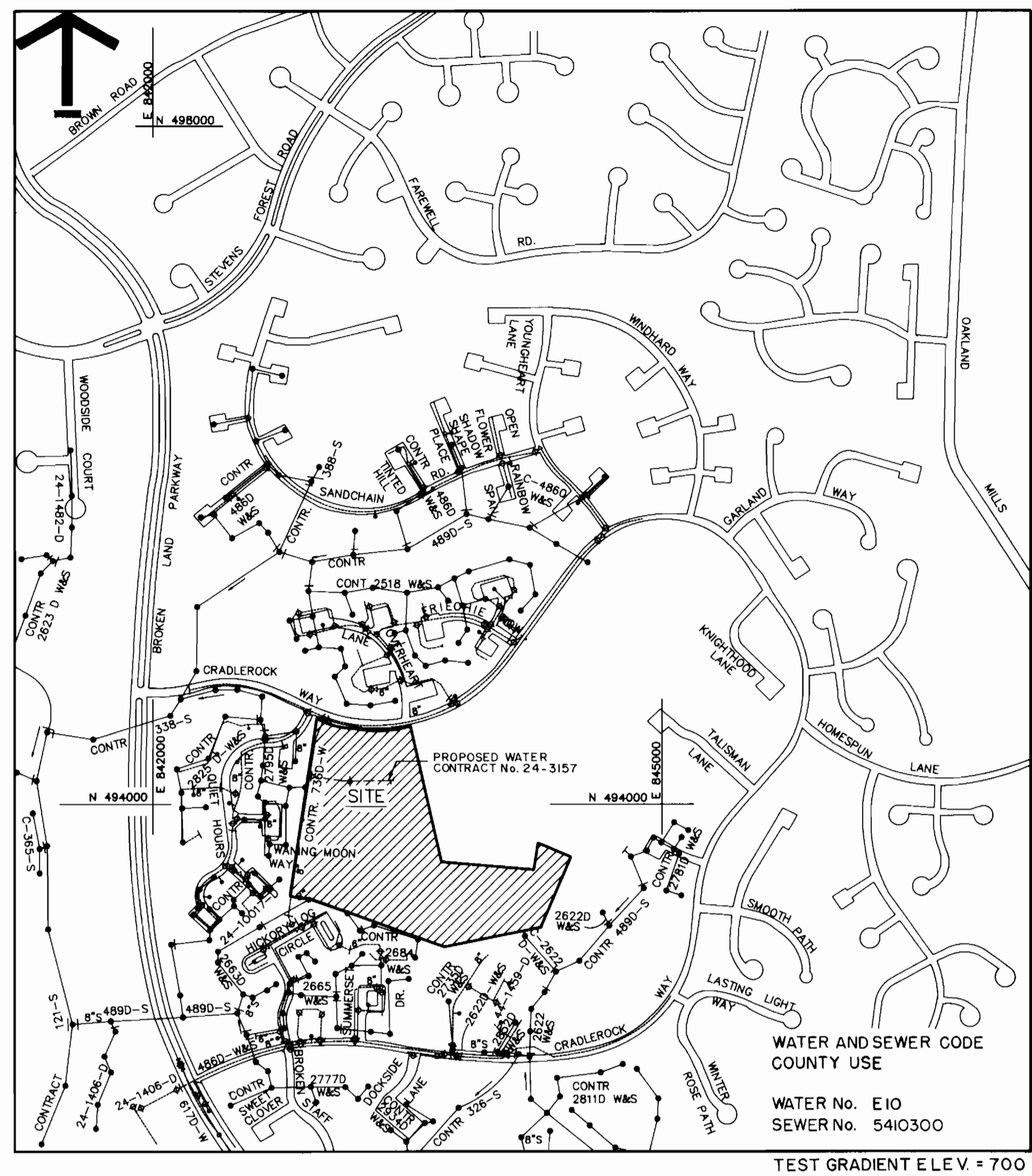


TYPE OF BUILDING	<u>Library, Facilities Bldg.</u>
NUMBER OF PARCELS	<u>2</u>
NUMBER OF SHC's	<u>2</u>
NUMBER OF WHC's	<u>2</u>
DRAINAGE AREA	<u>Little Patuxent</u>
TREATMENT PLANT	<u>L.P.W.Q.M.C.</u>



VICINITY MAP
SCALE: 1" = 600'

CONTRACT NO. 24-3157
VILLAGE OF OWEN BROWN
PARCELS A & B
SECTION 1, AREA 4
EAST COLUMBIA LIBRARY
HOWARD COUNTY, MARYLAND
DEPARTMENT OF PUBLIC WORKS

QUANTITIES			
ITEM	ESTM'D	AS-BUILT	MATERIAL/SUPPLIER
8" W	505 LF		
6" W	20 LF		
2" W	25 LF		
FH	1 EA.		
8" TS & V	1 EA.		
8"x6" T	2 EA.		
8" V	1 EA.		
6" V	2 EA.		
2" M. VAULT	1 EA.		
8" CAP	1 EA.		
8" LVB	1 EA.		
2" WHC TAP	1 EA.		
8" S	30 LF		

CHARGE INSPECTION TO CAPITAL PROJECTS NO. S-6792

Sediment Control Measures will be implemented in accordance with Article No. 15 of the Specifications and with Site Development Plan SDP - 92-15. Drawing C-11 TO C-15, Sediment & Erosion Control

REVIEWED FOR HOWARD SOIL CONSERVATION DISTRICT AND MEETS TECHNICAL REQUIREMENT

James M. Haley (Signature) 1/22/92 (Date)
SIGNATURE DATE

This Development Plan is approved for Soil Erosion and Sediment Control by the Howard Soil Conservation District

APPROVED: *Stephen V. Fleming* (Signature) 1/22/92 (Date)
HOWARD S.C.D. DATE

- GENERAL NOTES
1. Approximate location of existing mains are shown. The Contractor shall take all necessary precautions to protect existing mains and services and maintain uninterrupted supply. Any damage incurred shall be repaired immediately to the satisfaction of the inspector, at the Contractor's expense.
 2. All horizontal controls are based on Maryland State Coordinates.
 3. All vertical controls are based on U.S.G.S. Datum.
 4. All pipe elevations shown are invert elevations.
 5. Clear all utilities by a minimum of 6"; clear all poles by 2'-0" minimum or tunnel as required. Any cost incurred to the Contractor for tunneling or bracing at poles shall be included in unit prices bid for excavation and backfill.
 6. For details not shown on the drawings use Howard County Standard Details.
 7. For materials and construction methods use Howard County Standard Specifications.
 8. Contractor shall locate existing utilities a minimum of two (2) weeks in advance of construction operations in the vicinity of proposed utilities at his own expense.
 9. Contractor shall notify the following utilities or agencies at least five (5) working days before starting work shown on these plans.

State Highway Administration - 531-5533
 Baltimore Gas and Electric Company - Contractor Services 850-4620

Baltimore Gas and Electric Company - Underground Damage Control 787-9068

Baltimore Gas and Electric Company - Trouble Shooting 298-9013

"Miss Utility" 1-800-257-7777

Colonial Pipeline Company 795-1390
 Bureau of Utilities Howard County 313-4900

10. Trees are to be protected from damage to maximum extent. Trees located within the construction strip are not to be removed or damaged by the Contractor.
11. Contractor shall remove trees, stumps, and roots along line of excavation as directed by the Inspector. Payment for such removal shall be included in the unit price bid for excavation and backfill.
12. Place regulation "Men Working" and warning signs as required to comply with Maryland State Highway Administration Manual of Traffic Control for Highway Construction and Maintenance Operations.
13. All water mains to be D.I.P. class 52 unless otherwise noted.
14. Top of all water mains to have a minimum of 3'-1/2' cover unless otherwise noted.
15. Valves adjacent to tees shall be strapped to tees.
16. Block all fittings with concrete.
17. Fire hydrants shall be set to the bury line elevations shown on the drawings. All fire hydrants shall be restrained ~~and buttressed with concrete~~ in accordance with standard detail 2.11. Soil around the fire hydrant to be compacted in accordance with Section 1000 and 1005 of the Standard Specifications.
18. The Contractor shall not operate any water main valves on the existing system.
19. Water main and water house connection lines must have a minimum of one foot separation from the sanitary sewer and sewer house connections as they cross. Except at crossings, water and sewer lines shall have a minimum horizontal separation of 10'.
20. All water house connections shall be for inside setting unless otherwise shown.
21. All D.I.P. fittings shall be in accordance with A.W.W.A. specifications C-153 ductile iron compact fittings 3-inches through 12-inches for water and other liquids.

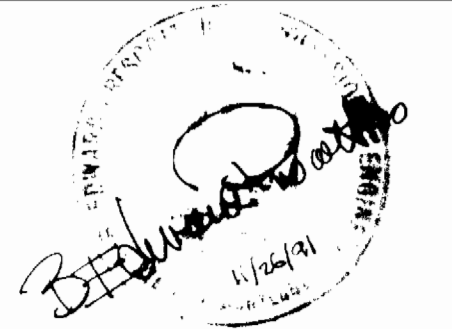
DEPARTMENT OF PUBLIC WORKS
 HOWARD COUNTY, MARYLAND

James M. Haley (Signature) 1/27/92 (Date)
 DIRECTOR OF PUBLIC WORKS DATE

Robert Benner (Signature) 1-16-92 (Date)
 CHIEF, BUREAU OF UTILITIES DATE

John M. Pender (Signature) 1/21/92 (Date)
 CHIEF, LAND DEVELOPMENT DIV. DATE

GRIMM AND PARKER
 ARCHITECTS • PLANNERS • ENGINEERS
 A PROFESSIONAL CORPORATION
 4061 POWDER MILL ROAD, SUITE 401
 CALVERTON, MARYLAND 20705
 (301) 595-1000 FAX (301) 595-0089



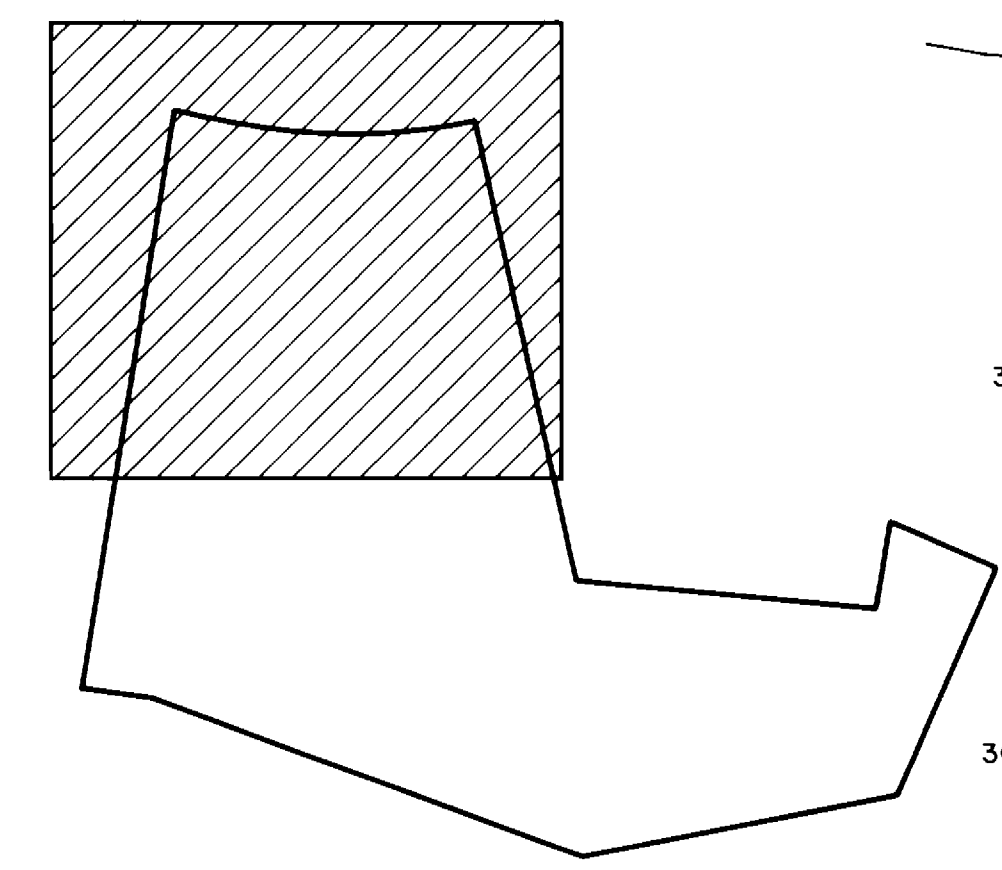
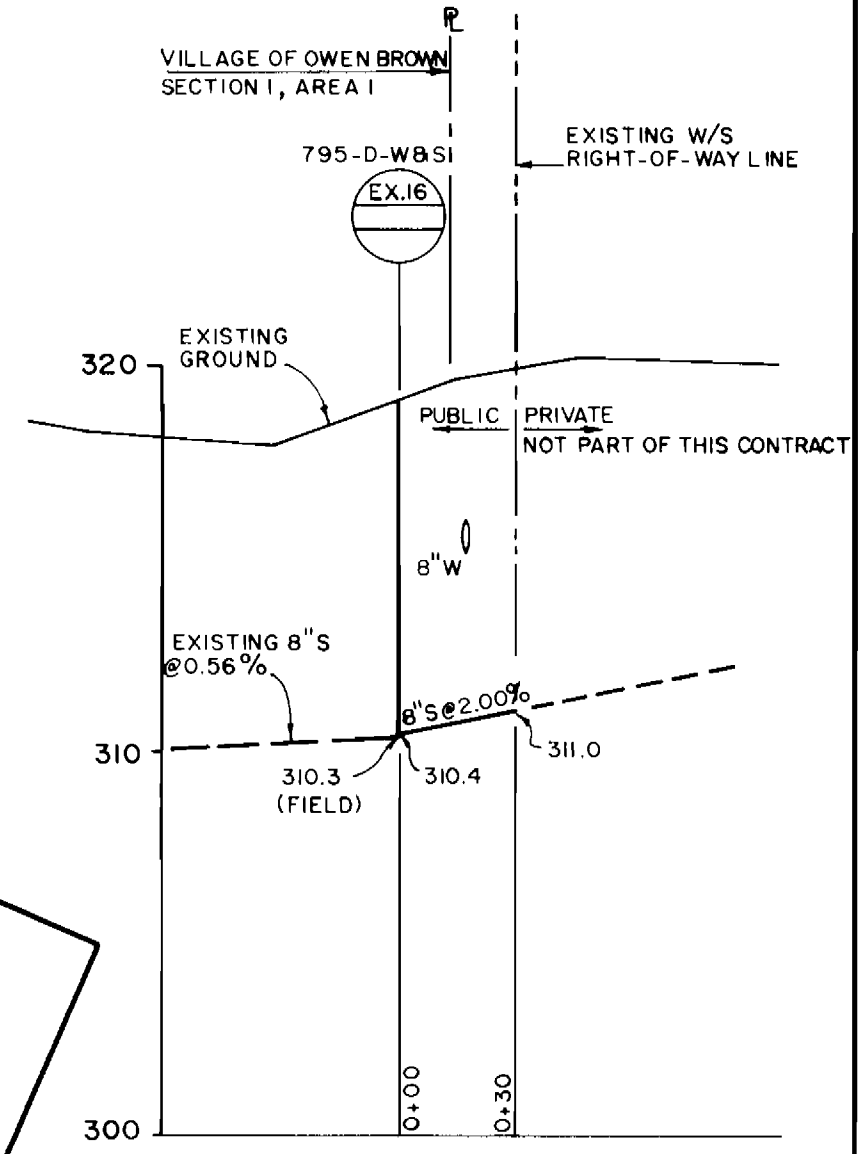
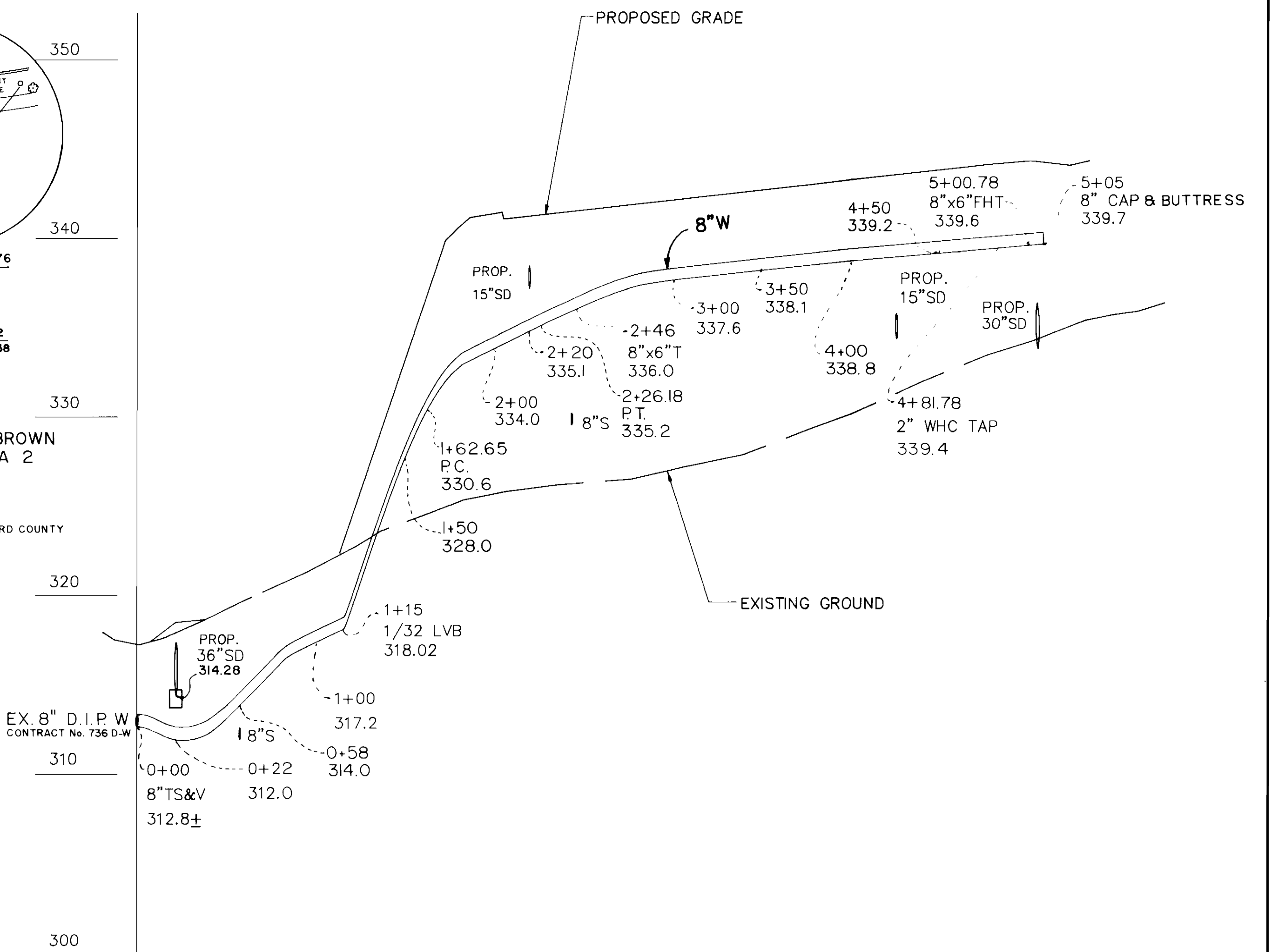
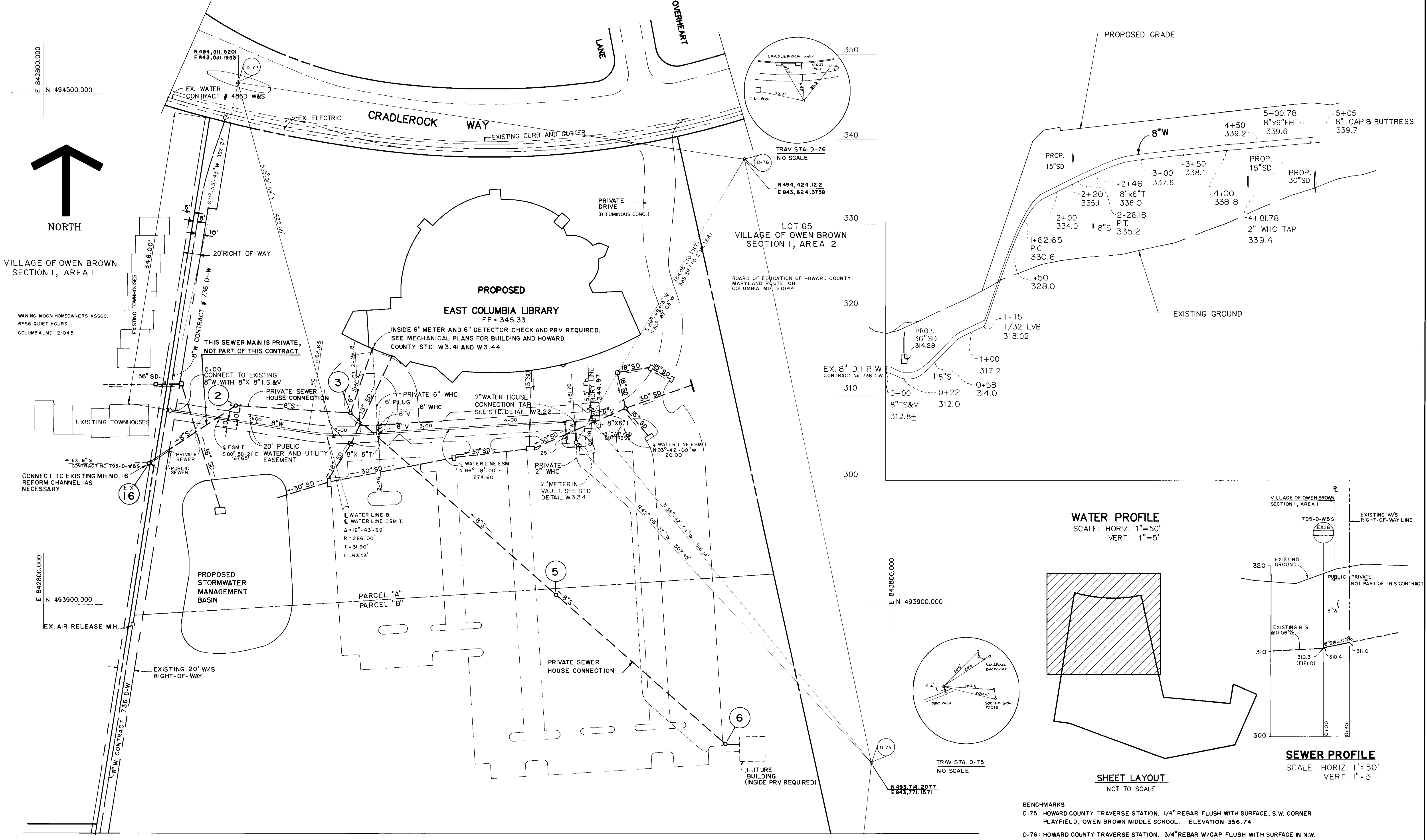
DES: BEP			
DRN: WEL/MCE			
CHK: BEP			
DATE: 11-12-91	BY:	REVISION	DATE

TITLE SHEET

600' SCALE MAP NO. 36 BLOCK NO.

VILLAGE OF OWEN BROWN
 PARCELS A & B
 SECTION 1 AREA 4
 SIXTH ELECTION DISTRICT
 CONTRACT NO. 24-3157

SCALE AS SHOWN
 SHEET 1 OF 2



PLAN
SCALE: 1"=50'

BENCHMARKS
D-75: HOWARD COUNTY TRAVERSE STATION. 1/4" REBAR FLUSH WITH SURFACE, S.W. CORNER PLAYFIELD, OWEN BROWN MIDDLE SCHOOL. ELEVATION 356.74
D-76: HOWARD COUNTY TRAVERSE STATION. 3/4" REBAR W/CAP FLUSH WITH SURFACE IN N.W. CORNER OF PLAYFIELD. ELEVATION 354.21

DEPARTMENT OF PUBLIC WORKS
HOWARD COUNTY, MARYLAND

Director of Public Works: *James P. ...* DATE: 1-27-92
 Chief, Bureau of Engineering: *...* DATE: 1-16-92
 Chief, Bureau of Utilities: *...* DATE: 1-16-92
 Chief, Land Development Div.: *...* DATE: 1-16-92

GRIMM AND PARKER
ARCHITECTS • PLANNERS • ENGINEERS
A PROFESSIONAL CORPORATION
4061 POWDER MILL ROAD, SUITE 401
CALVERTON, MARYLAND 20705
(301) 595-1000 FAX (301) 595-0089

DES: BEP				
WEL / DRN: MGE				
CHK: BEP				
DATE: 11-12-91	BY:	REVISION:	DATE:	600' SCALE MAP NO. 36

PLAN AND PROFILE

VILLAGE OF OWEN BROWN
PARCELS A & B
SECTION I AREA 4
SIXTH ELECTION DISTRICT
CONTRACT NO. 24-3157

SCALE AS SHOWN
SHEET 2 OF 2