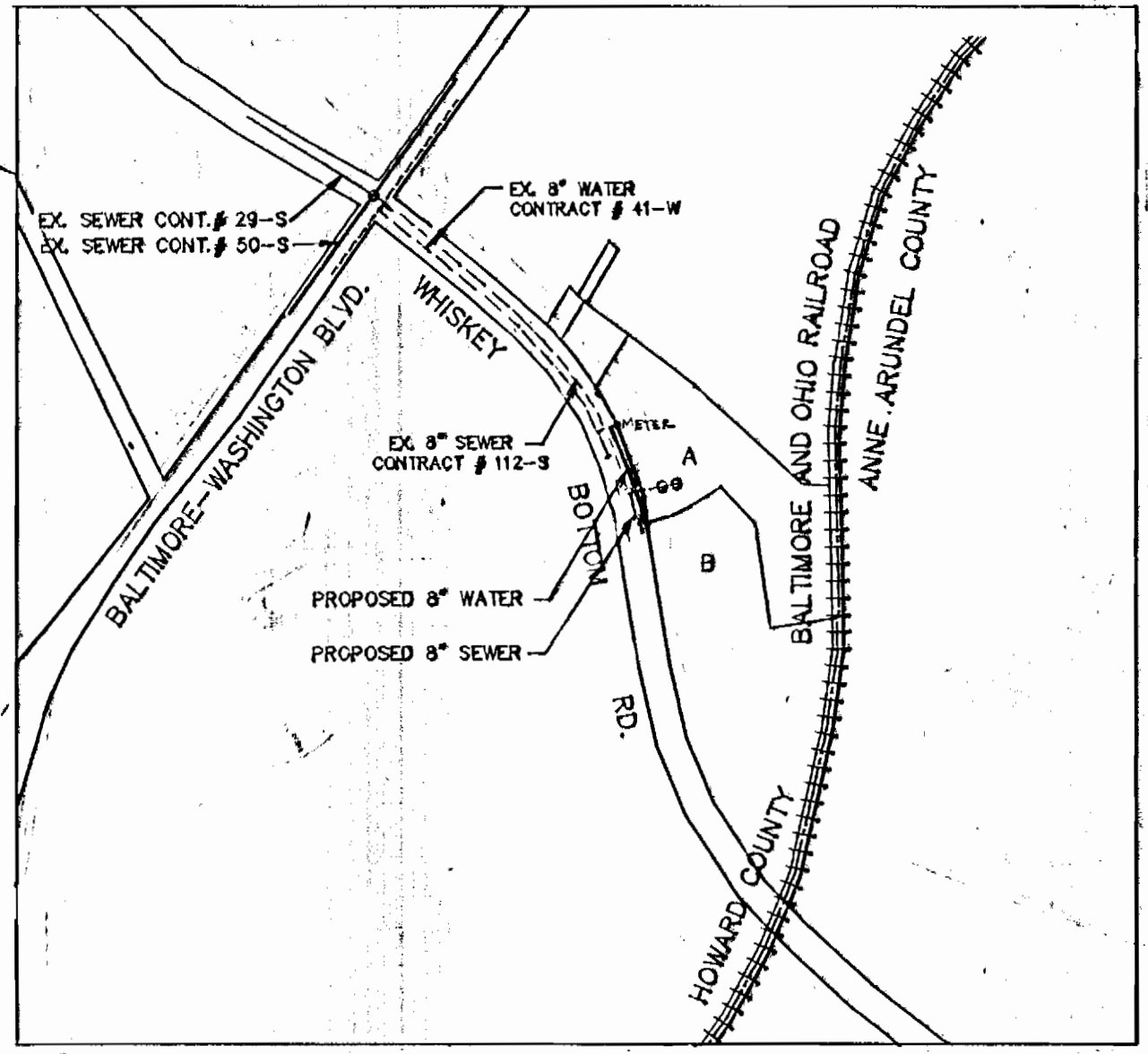


QUANTITIES			
ITEM	ESTIMATED	AS BUILT	SUPPLIER
8" SEWER	80 L.F.	76 L.F.	CERTIFIED SHIP
8" WATER	230 L.F.	231 L.F.	ATLANTIC STATES
MANHOLE	1 EACH	1 EA.	ATLANTIC STATES
6" VALVE	2 EACH	2 EA.	MUELLER
FIREHYDRANT	1 EACH	1 EA.	MUELLER
8" WHC	5 L.F.	13 L.F.	ATLANTIC STATES
2" SHC	17 L.F.	17 L.F.	CERTIFIED SHIP
3" x 3" TEE	1 EACH	1 EA.	MUELLER
3" x 3" TEE	1 EACH	1 EA.	MUELLER
3" VALVE	2 EACH	1 EA.	MUELLER
3" x 3" REDUCER	1 EACH	1 EA.	MUELLER
1/2" H.B.	1 EACH	ELIMINATED	ATLANTIC STATES
2" VALVE		5 L.F.	ATLANTIC STATES

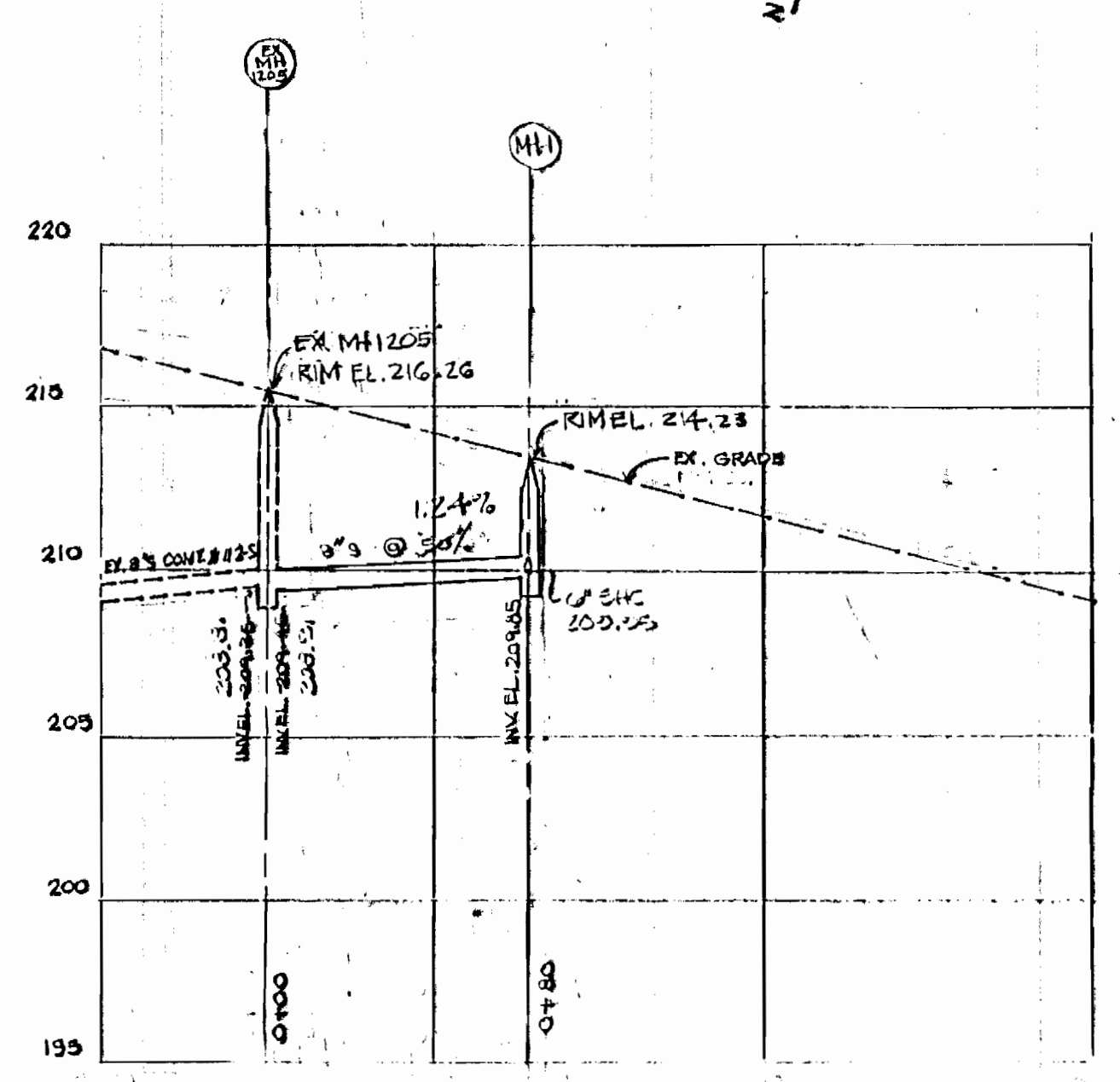
INFORMATION CHART	
TYPE OF BUILDING	OFFICE & ICE CREAM FACTORY
NO. OF WHC	1
NO. OF SHC	1
TREATMENT PLANT	LITTLE PATUXENT
DRAINAGE AREA	LITTLE PATUXENT
WATER CODE	C-03
SEWER CODE	7100800

CONTRACTOR = JOHN VIALE & SON

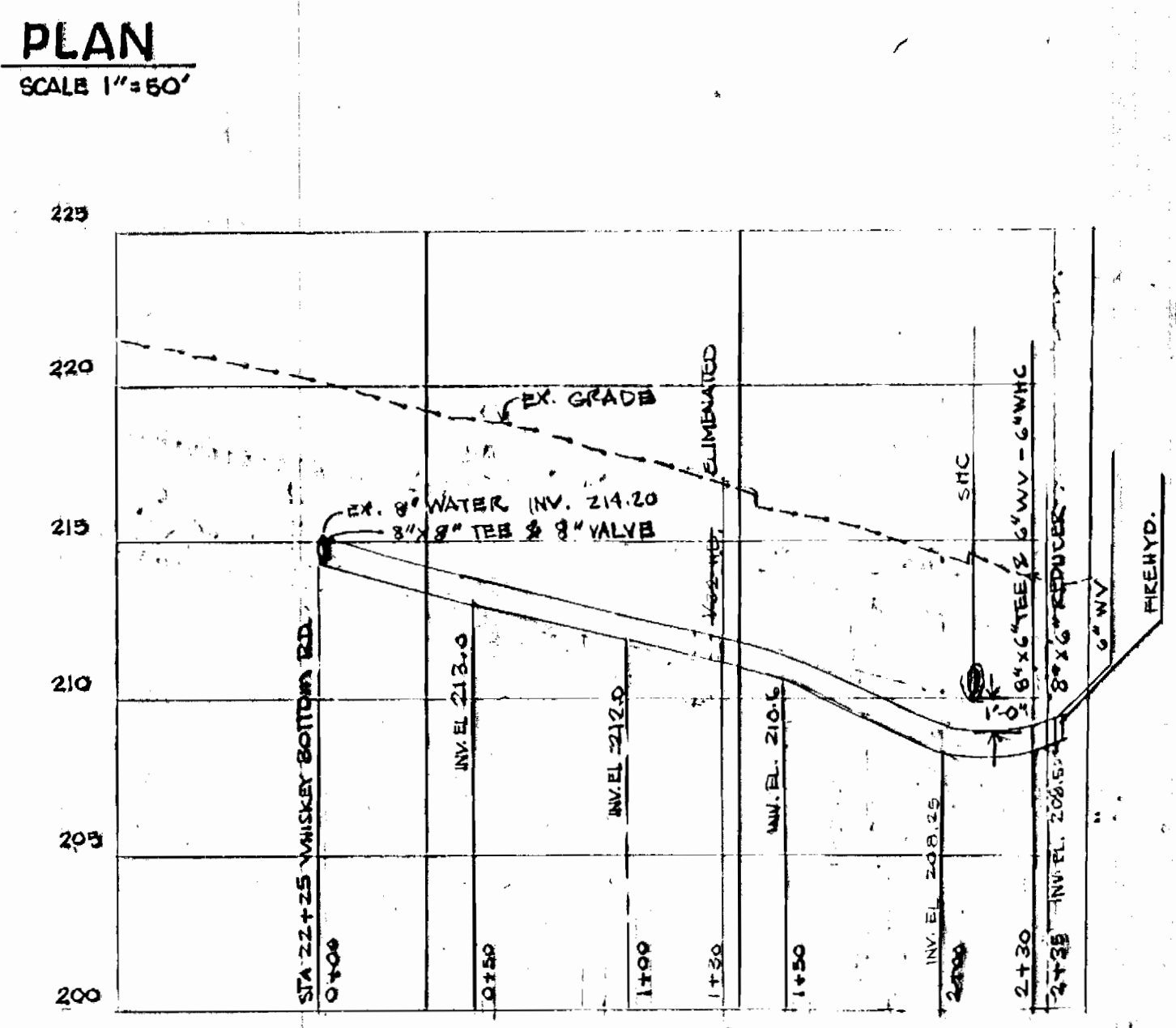


VICINITY MAP
SCALE: 1" = 600'

- GENERAL NOTES:
- APPROXIMATE LOCATION OF EXISTING MAINS ARE SHOWN. CONTRACTOR SHALL TAKE ALL NECESSARY PRECAUTIONS TO PROTECT EXISTING MAINS AND SERVICES AND MAINTAIN UNINTERRUPTED SUPPLY. ANY DAMAGE INCURRED SHALL BE PREPARED IMMEDIATELY TO THE SATISFACTION OF THE ENGINEER AT THE CONTRACTOR'S EXPENSE.
 - ALL HORIZONTAL CONTROLS ARE BASED ON MARYLAND STATE COORDINATES.
 - ALL VERTICAL CONTROLS ARE BASED ON U.S.G.S. DATUM.
 - ALL PIPE ELEVATIONS SHOWN ARE INVERT ELEVATIONS.
 - CLEAR ALL UTILITIES BY A MINIMUM OF 6" FROM EXISTING UTILITIES.
 - FOR DETAILS NOT SHOWN ON THE DRAWINGS, AND FOR MATERIALS AND CONSTRUCTION METHODS, USED HOWARD COUNTY DESIGN MANUAL, VOLUME IV, STANDARD SPECIFICATIONS AND DETAILS FOR CONSTRUCTION. THE CONTRACTOR SHALL HAVE A COPY OF VOLUME IV ON THE JOB.
 - WHERE TEST PITS HAVE BEEN MADE ON EXISTING UTILITIES, THEY ARE NOTED BY THE SYMBOL ST LOCATING THE LOCATION OF THE TEST PIT. A NOTE OR NOTES CONTAINING THE RESULTS OF THE TEST PIT OR PITS IS INCLUDED ON THE DRAWINGS. EXISTING UTILITIES IN THE VICINITY OF THE PROPOSED WORK FOR WHICH PITS HAVE BEEN MADE SHALL BE VERIFIED BY THE CONTRACTOR TO HIS OWN SATISFACTION. ANY DAMAGE TO EXISTING FACILITIES DUE TO CONTRACTOR'S NEGLIGENCE SHALL BE PREPARED AT THE CONTRACTOR'S EXPENSE.
 - CONTRACTOR SHALL NOTIFY THE FOLLOWING UTILITIES OR AGENCY AT LEAST FIVE WORKING DAYS BEFORE STARTING WORK ON THESE PLANS.
 - STATE HIGHWAY ADMINISTRATION - 531-5533
 - BALTIMORE, GAS & ELECTRIC, CONTRACTOR SERVICES - 581-2589
 - BALTIMORE, GAS & ELECTRIC CO. UNDERGROUND DAMAGE CONTROL - 234-5821
 - BALTIMORE, GAS & ELECTRIC CO. TROUBLE SHOOTING - 298-9013
 - MISS UTILITY - 1-301-559-0100
 - COLONIAL PIPE LINE COMPANY - 795-1390
 - HOWARD COUNTY DEPARTMENT OF PUBLIC WORKS CONSTRUCTION INSPECTION DIVISION - 792-7272
 - CLUB OF UTILITIES - 992-2368
 - TREES AND SHRUBS SHALL BE PROTECTED FROM DAMAGE TO MAXIMUM EXTENT. TREES AND SHRUBS LOCATED WITHIN THE CONSTRUCTION STRIP ARE NOT TO BE REMOVED OR DAMAGED BY THE CONTRACTOR.
 - CONTRACTORS SHALL REMOVE TREES, STUMP AND ROOTS LINE OF EXCAVATION. PAYMENT FOR SUCH REMOVAL SHALL BE INCLUDED IN THE UNIT PRICE BID FOR CONSTRUCTION OF THE MAIN.
 - ALL MAINS TO BE D.I.P. CLASS 52 UNLESS OTHERWISE NOTED.
 - TOPS OF ALL WATER MAIN SHALL HAVE A MINIMUM OF 3-1/2 FEET UNLESS OTHERWISE NOTED.
 - VALVES ADJACENT TO TIEES SHALL BE STRAPPED TO TIEES.
 - ALL FITTINGS SHALL BE BUTTRESSED OR ANCHORED WITH CONCRETE IN ACCORDANCE WITH THE STANDARD DETAILS UNLESS OTHERWISE PROVIDED FOR IN THE DRAWINGS.
 - FIRE HYDRANTS SHALL BE SET TO THE BURY LINE ELEVATION SHOWN ON THE DRAWINGS. ALL FIRE HYDRANTS SHALL BE COMPACTED IN ACCORDANCE WITH SECTION 1.000 AND 1.005 OF STANDARD SPECIFICATIONS (STD. DETAILS W.3.21).
 - THE CONTRACTORS SHALL NOT OPERATE ANY WATER MAIN VALVES ON THE EXISTING WATER SYSTEM.
 - ALL WATER HOUSE CONNECTION SHALL BE FOR INSIDE METER SETTING UNLESS OTHERWISE NOTED ON THE PLANS OR IN THE SPECIFICATIONS. (W.3.21)
 - WATER MAINS AND WATER HOUSE CONNECTION LINES MUST BE PLACED SO AS TO HAVE AT LEAST ONE (1) FOOT SEPARATION FROM THE SEWER MAIN OR SEWER HOUSE CONNECTION AS THEY PASS ABOUT IT.
 - MANHOLES DESIGNATED W.T. IN PLAN AND PROFILE SHALL BE WATER TIGHT FRAME AND COVERS STANDARD DETAIL 05.52 WHERE WATER TIGHT FRAME AND COVER IS USED, SET TO OF FRAME 1'-0" ABOVE FINISHED GRADE UNLESS OTHERWISE NOTED ON THE DRAWINGS.
 - ALL SEWER MAINS SHALL BE C.S.P.C., R.C.S.P., V.C.P.X., OR PVC UNLESS OTHERWISE NOTED.
 - THE CONTRACTOR SHALL PROVIDE A JOINT IN ALL SEWER MAINS WITHIN 2'-0" OF EXTERIOR MANHOLE WALL.
 - ALL MANHOLES SHALL BE 4'-0" INSIDE DIAMETER UNLESS OTHERWISE NOTED.
 - MANHOLES SHOWN WITH 12" AND 16" WALLS ARE FOR BRICK MANHOLES ONLY.
 - MANHOLES LOCATED WITHIN PROPOSED ROADWAY SHALL HAVE STANDARD HEAVY TRAFFIC MANHOLE FRAME AND COVER, STANDARD DETAIL 05.51.
 - ALL WATER HOUSE CONNECTION ARE FOR INSIDE METER SETTING.
 - ALL D.I.P. FITTINGS SHALL BE IN ACCORDANCE WITH A.W.W.A. SPECIFICATION C-153 DUCTILE IRON COMPACT FITTING, 3" THROUGH 12" FOR WATER AND OTHER LIQUIDS.



SEWER PROFILE
SCALE: 1" = 50'
VER. 1" = 5'



WATER PROFILE
SCALE: 1" = 50'
VER. 1" = 5'

- PROVIDE FULL LENGTH OF CONCRETE ENCASUREMENT FOR 6 INCHES SEWER HOUSE CONNECTION AS PER STD. DTL. G 2.02
- PAVEMENT RECONSTRUCTION SHALL BE IN ACCORDANCE WITH PAVING SECTION P-3 OF STD. DTL. R-2.02 AND STD. DTL. G 4.01

OWNER/DEVELOPER
THE SOUTHLAND CORPORATION
5300 SHAWNEE RD.
ALEXANDRIA, Va. 22312

THIS PLAN IS APPROVED FOR EROSION AND SEDIMENT CONTROL BY THE HOWARD COUNTY SOIL CONSERVATION DISTRICT.
APPROVED: *[Signature]* 8/16/91
HOWARD COUNTY SOIL CONSERVATION DISTRICT
REVIEWED FOR HOWARD COUNTY SOIL CONSERVATION DISTRICT AND MEETS TECHNICAL REQUIREMENT.
APPROVED: *[Signature]* 8/16/91
U.S. SOIL CONSERVATION SERVICE

DEPARTMENT OF PUBLIC WORKS
HOWARD COUNTY, MARYLAND
DIRECTOR OF PUBLIC WORKS DATE: *[Signature]* 8/16/91
CHIEF, LAND DEVELOPMENT DIVISION DATE: *[Signature]* 8/16/91
CHIEF BUREAU OF UTILITIES DATE: *[Signature]* 8/16/91
CHIEF BUREAU OF ENGINEERING DATE: *[Signature]* 8/16/91

loria engineering inc.
CONSULTING ENGINEERS-LAND PLANNERS-SURVEYORS
3230 BETHANY LANE, SUITE 4, ELLICOTT CITY, MD.
301-465-0400



DATE	BY	REVISION DESCRIPTION

PLAN & PROFILE
WATER & SEWER MAIN
CONTRACT # 29-3140D, P-91-34
DATE: 6-13-91 SHEET 1 OF 1

THE SOUTHLAND CORPORATION PROPERTY
PARCEL "A" & "B"
WHISKEY BOTTOM ROAD, LAUREL
TAX MAP 50 PARCEL 433/409 6th ELECTION DISTRICT, HOWARD COUNTY, MD.
AS-BUILT 0-15-03