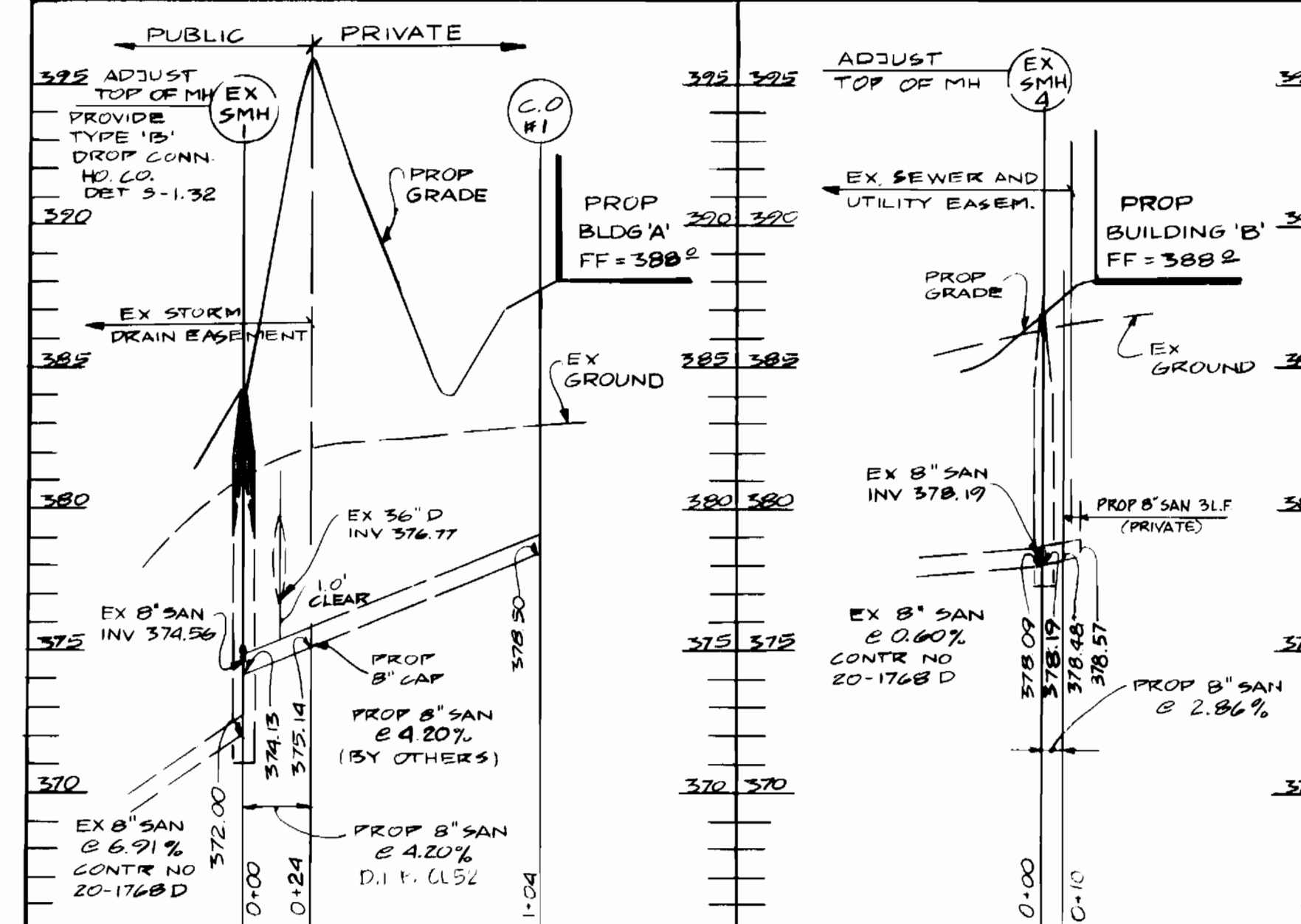
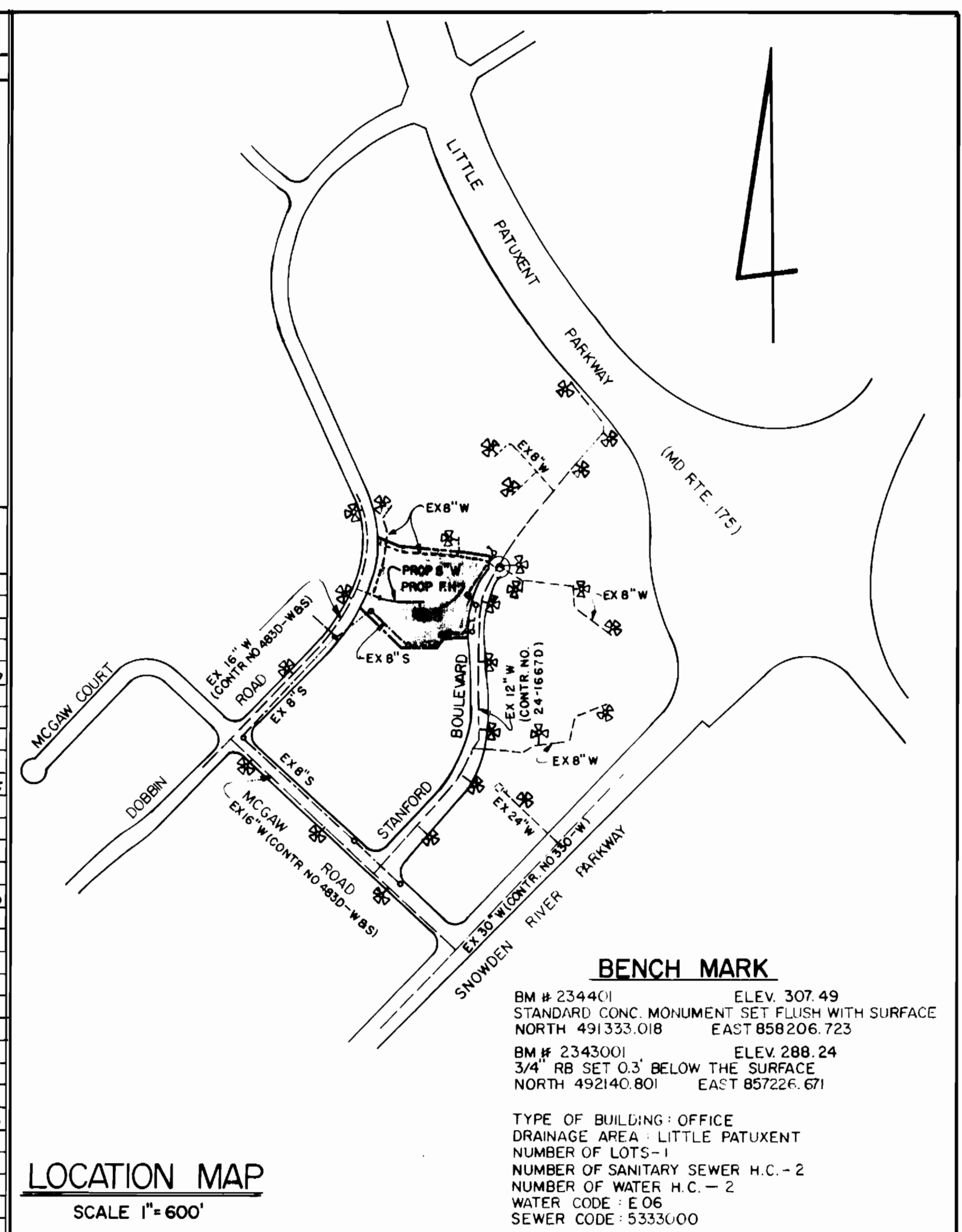


PLAN  
SCALE 1"=50'

QUANTITIES			
ITEM	ESTIMATED	AS - BUILT	MATERIAL / SUPPLIER
8" x 8" TEE	1		
8" x 6" TEE	1		
6" VALVE	2		
6" VALVE	1		
8" CAP	2		
8" 1/8 BEND (45°)	2		
8" SANITARY CAP	2		
F.H.	1		
8" D.I.P.	285 LF		
6" D.I.P.	57 LF		
8" SANITARY PIPE	34 LF		
DROP CONNECTION	1		
VERTICAL FEET	3 LF		

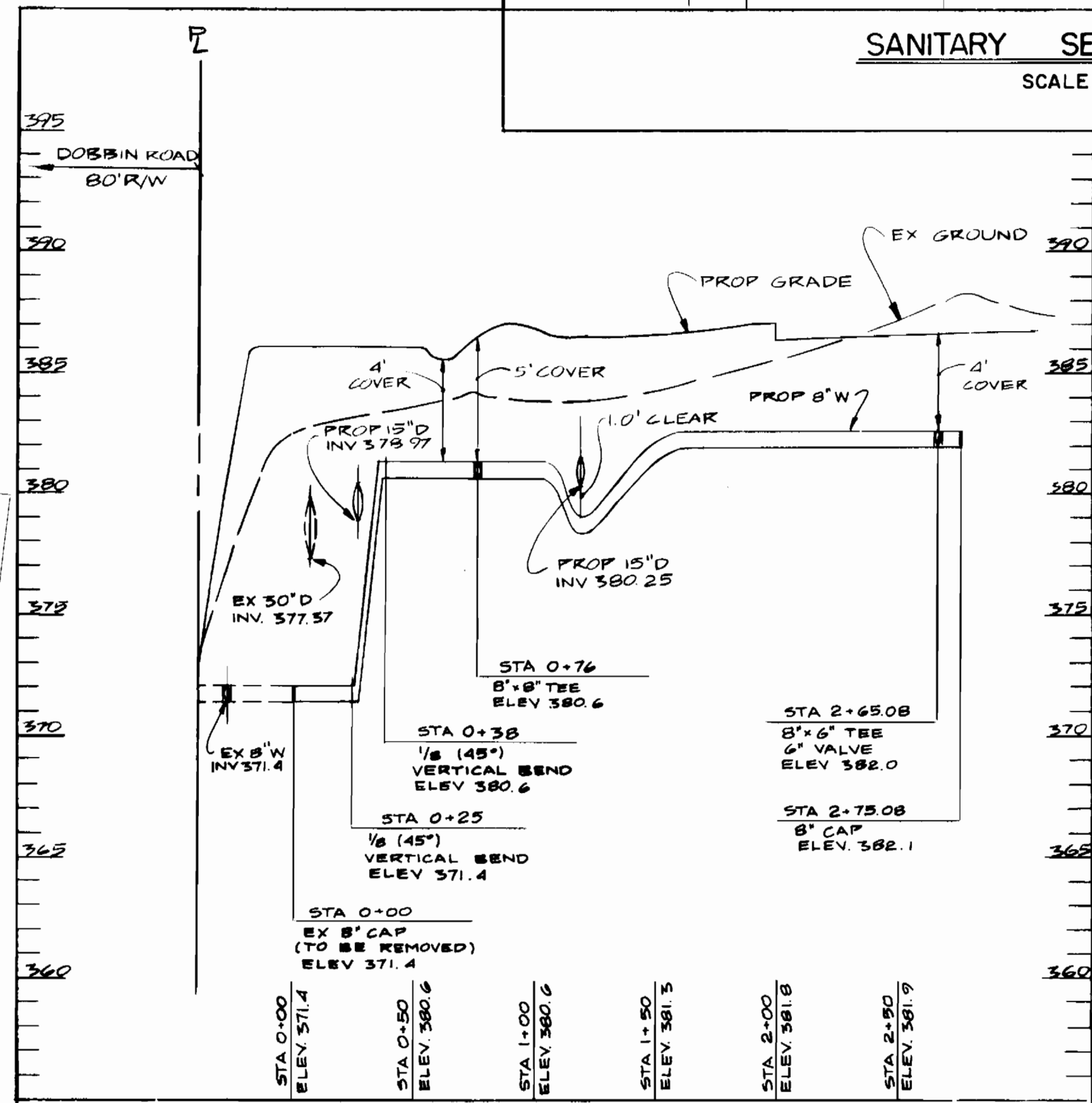


SANITARY SEWER PROFILES  
SCALE: 1"=50' HORIZ.  
1"=5' VERT.



LOCATION MAP  
SCALE 1"=600'

**BENCH MARK**  
 BM # 234401 ELEV. 307.49  
 STANDARD CONC. MONUMENT SET FLUSH WITH SURFACE  
 NORTH 491333.018 EAST 858206.723  
 BM # 2343001 ELEV. 288.24  
 3/4" RB SET 0.3' BELOW THE SURFACE  
 NORTH 492140.801 EAST 857226.671  
 TYPE OF BUILDING: OFFICE  
 DRAINAGE AREA: LITTLE PATUXENT  
 NUMBER OF LOTS: 1  
 NUMBER OF SANITARY SEWER H.C.: 2  
 NUMBER OF WATER H.C.: 2  
 WATER CODE: E 06  
 SEWER CODE: 5333000



WATER PROFILE  
SCALE: 1"=50' HORIZ.  
1"=5' VERT.

- GENERAL NOTES**
- PART 1 - APPROXIMATE LOCATION OF EXISTING MAINS ARE SHOWN. THE CONTRACTOR SHALL TAKE ALL NECESSARY PRECAUTIONS TO PROTECT EXISTING MAINS AND SERVICES AND MAINTAIN UNINTERRUPTED SUPPLY. ANY DAMAGE INCURRED SHALL BE REPAIRED IMMEDIATELY TO THE SATISFACTION OF THE ENGINEER AT THE CONTRACTOR'S EXPENSE.
- PART 2 - WATER
- ALL WATER MAINS TO BE D.I.P. UNLESS OTHERWISE NOTED.
  - TOPS OF ALL WATER MAINS TO HAVE A MINIMUM OF 3.0 COVER UNLESS OTHERWISE NOTED.
  - VALVES ADJACENT TO TEES SHALL BE STRAPPED TO TEES.
  - ALL FITTINGS SHALL BE BUTTRESSED OR ANCHORED WITH CONCRETE IN ACCORDANCE WITH THE STANDARD DETAILS UNLESS OTHERWISE PROVIDED ON THE DRAWINGS.
  - FIRE HYDRANTS SHALL BE SET TO THE BURY LINE ELEVATION SHOWN ON THE DRAWINGS. ALL FIRE HYDRANTS SHALL BE STRAPPED AND BUTTRESSED WITH CONCRETE IN ACCORDANCE WITH THE STANDARD DETAILS. SOIL AROUND THE FIRE HYDRANT SHALL BE COMPACTED IN ACCORDANCE WITH SECTION 1000 AND 1005 OF THE STANDARD SPECIFICATIONS.
  - CONTRACTOR SHALL NOT OPERATE ANY WATER MAIN VALVES ON THE EXISTING WATER SYSTEM.
  - ALL WATER HOUSE CONNECTIONS SHALL BE INSIDE METER SETTINGS UNLESS NOTED OTHERWISE.
  - ALL FIRE HYDRANTS TO BE SET THREE FEET BEHIND FACE OF CURB UNLESS NOTED OTHERWISE.
  - ALL WATER HOUSE CONNECTIONS SHALL COMPLY WITH HOWARD CO. STD. 3.21 AS SHOWN ON ART. 40, SPECIAL PROVISIONS.
  - MINIMUM CRIMP RADIUS WILL BE SPECIFIED BY PIPE MANUFACTURER.
  - WATER MAINS AND WATER HOUSE CONNECTION LINES MUST BE PLACED SO AS TO HAVE AT LEAST ONE FOOT SEPARATION FROM THE SEWER MAIN OR SEWER HOUSE CONNECTION AS THEY PASS ABOUT IT.
  - SERVICE CLAMPS ARE TO HAVE STAINLESS STRAPS.
  - ALL D.I.P. FITTINGS SHALL BE ACCORDANCE WITH ANMA SPECIFICATION C-153 DUCTILE IRON COMPACT FITTINGS, 3-INCH THROUGH 12-INCH FOR WATER AND OTHER LIQUIDS.
- PART 3
- ALL SEWER MAINS SHALL BE C.S.P.P., K.C.S.P., V.C.P.P., OR P.V.C. UNLESS OTHERWISE NOTED.
  - THE CONTRACTOR SHALL PROVIDE A JOINT IN ALL SEWER MAINS WITHIN 2'-0" OF EXTERIOR MANHOLE WALL.
  - ALL MANHOLES SHALL BE 4'-0" INSIDE DIAMETER UNLESS OTHERWISE NOTED.
  - MANHOLES SHOWN WITH 12" WALLS ARE BRICK MANHOLES ONLY.
  - MANHOLES DESIGNATED WITHIN THE PLAN AND PROFILE SHALL HAVE WATERPROOF FRAME AND COVER, STANDARD DETAIL C-5.32. INSIDE WATERPROOF MANHOLE FRAME AND COVER IS USED. SET TOP OF FRAME 1'-0" ABOVE FINISHED GRADE UNLESS NOTED ON DRAWINGS.
  - MANHOLES LOCATED WITHIN PROPOSED ROADWAY SHALL HAVE STANDARD HEAVY TRAFFIC MANHOLE FRAME AND COVER, STANDARD DETAIL C-5.31.
  - THE CONTRACTOR SHALL ARRANGE TO HAVE THE EXISTING UNDERGROUND CABLE FIELD-LOCATED PRIOR TO ANY EXCAVATION FOR THE SEWER MAIN.

REVIEWED FOR HOWARD SOIL CONSERVATION DISTRICT AND MEETS TECHNICAL REQUIREMENTS  
*James M. Niles (ES) 6/24/91*  
 U.S. SOIL CONSERVATION SERVICE DATE

THE DEVELOPMENT PLAN IS APPROVED FOR SOIL EROSION AND SEDIMENT CONTROL BY THE HOWARD SOIL CONSERVATION DISTRICT  
*Scott G. Kelly 6/24/91*  
 HOWARD SOIL CONSERVATION DISTRICT DATE

SEDIMENT CONTROL MEASURES FOR THIS CONTRACT WILL BE IMPLEMENTED IN ACCORDANCE WITH SECTION 219 OF THE STANDARD SPECIFICATIONS AND SDP 91-53

DEPARTMENT OF PUBLIC WORKS  
*James M. Niles 6-17-91*  
 DIRECTOR OF PUBLIC WORKS DATE  
*Shirrell Anderson 6/24/91*  
 CHIEF, BUREAU OF ENGINEERING DATE

ENGINEER  
**GEORGE WILLIAM STEPHENS JR. AND ASSOCIATES, INC.**  
 658 KENILWORTH DRIVE  
 SUITE 100  
 TOWSON, MARYLAND 21204  
 (301) 825-8120

DESIGNED: NIP  
 DRAWN: JME  
 CHECKED: PRC  
*George W. Stephens Jr. 6/24/91*  
 42-117930

BY	NO	REVISION	DATE
GW5	1	AS PER COUNTY COMMENTS	4/12/91

PLAN FOR PROPOSED WATER MAIN  
 CONTRACT NO. 24-3124-D

COLUMBIA CORPORATE PARK  
 PARCEL A-19  
 (RESUBDIVISION OF PARCEL A-16)  
 HOWARD COUNTY, MARYLAND ELECTION DIST. 6  
 AUGUST 10, 1990

SCALE AS SHOWN  
 SHEET 1 OF 1