

SEDIMENT CONTROL NOTES

- A MINIMUM OF 24 HOURS NOTICE MUST BE GIVEN TO THE HOWARD COUNTY OFFICE OF INSPECTION AND PERMITS PRIOR TO THE START OF ANY CONSTRUCTION. (313-3437)
- ALL VEGETATIVE AND STRUCTURAL PRACTICES ARE TO BE INSTALLED ACCORDING TO THE PROVISIONS OF THIS PLAN AND ARE TO BE IN CONFORMANCE WITH THE 1983 MARYLAND STANDARDS AND SPECIFICATIONS OF SOIL EROSION AND SEDIMENT CONTROL
- FOLLOWING INITIAL SOIL DISTURBANCE OR REDISTRIBUTION, PERMANENT OR TEMPORARY STABILIZATION SHALL BE COMPLETED WITHIN 14 CALENDAR DAYS FOR ALL AREAS DISTURBED BY THE PROJECT. PROPER SEEDING AND MULCHING SHALL BE PERFORMED TO STABILIZE AREAS ON THE PROJECT SITE. ALL SLOPES SHALL BE MAINTAINED TO ORIGINAL GRAD OR GREATER UNLESS OTHERWISE NOTED.
- ALL SEDIMENT TRAPS/BASINS SHOWN MUST BE FENCED AND WARNING SIGNS POSTED AROUND THEM PERMANENTLY IN ACCORDANCE WITH VOL. 1, CHAPTER 12, OF THE HOWARD COUNTY DESIGN MANUAL, STORM DRAINAGE.
- ALL DISTURBED AREAS MUST BE STABILIZED WITHIN THE TIME PERIOD SPECIFIED ABOVE IN ACCORDANCE WITH THE 1983 MARYLAND STANDARDS AND SPECIFICATIONS FOR SOIL EROSION AND SEDIMENT CONTROL FOR PERMANENT SEEDING (Sec. 52.1). TEMPORARY SEEDING (Sec. 52) AND MULCHING (Sec. 52.3). TEMPORARY STABILIZATION WITH MULCH ALONE CAN ONLY BE DONE WHEN RECOMMENDED SEEDING DATES DO NOT ALLOW FOR PROPER GERMINATION AND ESTABLISHMENT OF GRASSES.
- ALL SEDIMENT STRUCTURES ARE TO REMAIN IN PLACE AND ARE TO BE MAINTAINED IN OPERATIVE CONDITION UNTIL PERMITS FOR THEIR REMOVAL HAS BEEN OBTAINED FROM THE HOWARD COUNTY SEDIMENT CONTROL INSPECTOR.
- SITE ANALYSIS:

TOTAL AREA OF SITE	NA	ACRES
AREA TO BE RESTORED OR PAVED	0.00	ACRES
AREA TO BE VEGETATIVELY STABILIZED	0.00	ACRES
TOTAL CUT	0.00	CU. YDS.
TOTAL FILL	0.00	CU. YDS.
OFFSITE WASTE/BORROW AREA LOCATION		
- ANY SEDIMENT CONTROL PRACTICE WHICH IS DISTURBED BY GRADING ACTIVITY FOR PLACEMENT OF UTILITIES MUST BE REPAIRED ON THE SAME DAY OF THE DISTURBANCE.
- ADDITIONAL SEDIMENT CONTROLS MUST BE PROVIDED, IF DEEMED NECESSARY, BY THE HOWARD COUNTY DPW SEDIMENT CONTROL INSPECTOR.
- ON ALL SITES WITH DISTURBED AREAS IN EXCESS OF 2 ACRES, APPROVAL OF THE SEDIMENT CONTROL PLAN SHALL BE OBTAINED FROM THE HOWARD COUNTY DPW SEDIMENT CONTROL INSPECTOR. APPROVED CHANGES TO THE PLAN MUST BE SUBMITTED TO THE DPW SEDIMENT CONTROL INSPECTOR FOR APPROVAL. APPROVALS MAY NOT BE AUTHORIZED UNTIL THIS INITIAL APPROVAL BY THE INSPECTION AGENCY IS MADE.
- CONTRACTOR SHALL DIRECT ALL RUNOFF TO EXISTING S.H.A. SEDIMENT DEVICES CURRENTLY BE USED FOR THE ADJACENT S.H.A. CONSTRUCTION PROJECT (S.H.A. CONT. NO. HO-292-508-770).
- CONTRACTOR SHALL LIMIT OPENING TRENCH TO THREE (3) PIPE LENGTHS OR THAT WHICH CAN BE MANIPULATED AT THE END OF EACH DAY.
- CONTRACTOR SHALL PLACE EXCAVATED MATERIALS ON UPHILL SIDE OF TRENCH AND PLACE SILT FENCE ON DOWNHILL SIDE OF TRENCH.
- REFER TO CONTRACT SPECIFICATIONS (PROJECT MANUAL) FOR SEEDING NOTES.

SEQUENCE OF CONSTRUCTION (S.O.C.)

- CONTACT HOWARD COUNTY DEPARTMENT OF INSPECTIONS AND PERMITS (301)313-2455.
- INSTALL EROSION AND SEDIMENT CONTROL DEVICES AS PER SECTION 219.
- EXCAVATE AND INSTALL PROPOSED WATER MAIN. INSTALL WATER MAIN FROM W.L.S.A. 24+00 TO 5+50 FIRST. THEN INSTALL REMAINING WATER LINES.
- RESTORE PAVING AND FAIRWAY TRENCHES TO THEIR ORIGINAL CONDITION AS PER HOWARD COUNTY STANDARDS.
- FINE GRADE ALL DISTURBED AREAS AND STABILIZE WITH PERMANENT SEEDING.
- UPON PERMISSION FROM THE HOWARD COUNTY SEDIMENT CONTROL INSPECTOR, REMOVE SEDIMENT AND SEDIMENT CONTROL DEVICES AFTER ALL DISTURBED AREAS HAVE BEEN STABILIZED.

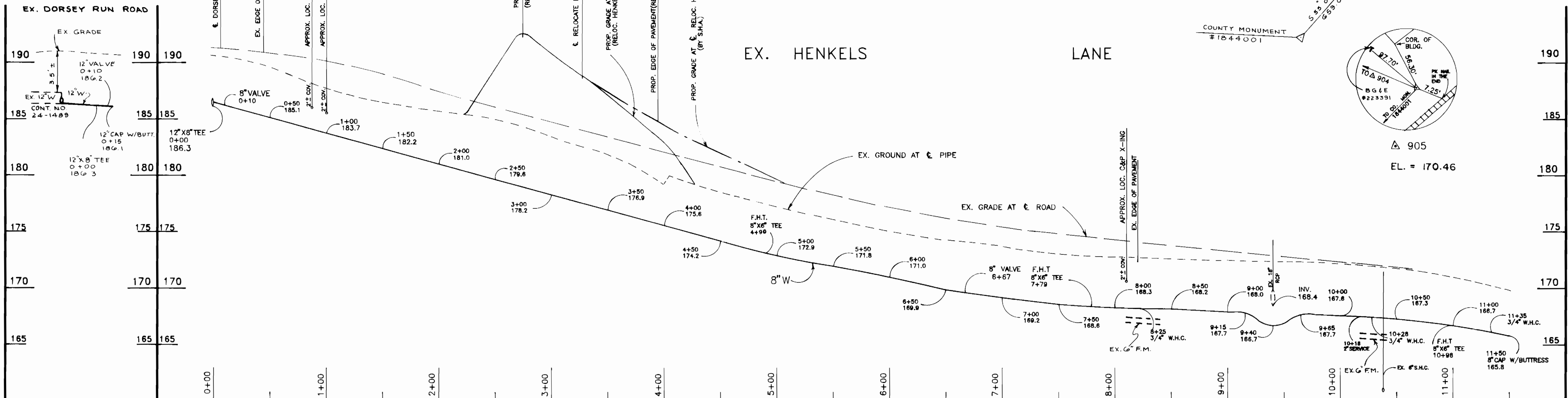
GENERAL NOTES

- APPROXIMATE LOCATION OF EXISTING MANS ARE SHOWN. THE CONTRACTOR SHALL TAKE ALL NECESSARY PRECAUTIONS TO PROTECT EXISTING MANS AND MAINTAIN UNINTERRUPTED SERVICE. ANY DAMAGE INCURRED SHALL BE REPAIRED IMMEDIATELY TO THE SATISFACTION OF THE ENGINEER AT THE CONTRACTOR'S EXPENSE.
- ALL HORIZONTAL CONTROLS ARE BASED ON MARYLAND STATE COORDINATES.
- ALL VERTICAL CONTROLS ARE BASED ON U.S.G.S. DATA.
- ALL PIPE ELEVATIONS SHOWN ARE INVERT ELEVATIONS.
- REMOVE CAP & BUTTRESS AND CONN. TO EX. 12" W W/PROP. 12" SLEEVE
- FOR DETAILS NOT SHOWN ON THE DRAWINGS, AND FOR MATERIALS AND CONSTRUCTION METHODS, USE HOWARD COUNTY DESIGN MANUAL, VOLUME IV, STANDARD SPECIFICATIONS AND DETAILS FOR CONSTRUCTION. THE CONTRACTOR SHALL HAVE A COPY OF VOLUME IV ON THE JOB.
- WHERE TEST PITS HAVE BEEN MADE ON EXISTING UTILITIES, THEY ARE NOTED BY THE SYMBOL AT THE LOCATION OF THE TEST PIT. A NOTE OR NOTES CONTAINING THE RESULTS OF THE TEST PIT OR PITS IS INCLUDED IN THE DRAWINGS. EXISTING UTILITIES IN THE VICINITY OF THE PROPOSED WORK FOR WHICH TEST PITS HAVE NOT BEEN MADE SHALL BE LOCATED BY THE CONTRACTOR TWO WEEKS IN ADVANCE OF CONSTRUCTION OPERATIONS AT HIS OWN EXPENSE.
- CONTRACTOR SHALL NOTIFY THE FOLLOWING UTILITY COMPANIES OR AGENCIES AT LEAST FIVE WORKING DAYS BEFORE STARTING WORK SHOWN ON THESE PLANS:
 - STATE HIGHWAY ADMINISTRATION - 531-5533
 - BALTIMORE GAS & ELECTRIC CO. SERVICES 850-4820
 - BALTIMORE GAS & ELECTRIC CO. UNDERGROUND DAMAGE CONTROL 859-8004
 - BALTIMORE GAS & ELECTRIC CO. TROUBLE SHOOTING - 298-9001
 - METS UTILITY - 800-257-7777
 - COLONIAL PIPELINE - 782-1290
 - BUREAU OF UTILITIES, HOWARD COUNTY DEPT. OF PUBLIC WORKS- 313-4900
- TREES AND SHRUBS ARE TO BE PROTECTED FROM DAMAGE TO MAINTAIN EXTEND. TREES AND SHRUBS LOCATED WITHIN THE CONSTRUCTION STRIP ARE NOT TO BE REMOVED OR DAMAGED BY THE CONTRACTOR.
- CONTRACTOR SHALL REMOVE TREES, STUMPS AND ROOTS ALONG LINE OF EXCAVATION. PAYMENT FOR SUCH REMOVAL SHALL BE INCLUDED IN THE UNIT PRICE BID FOR CONSTRUCTION OF THE MAIN.
- ALL WATER MAINS TO BE D.I.P. CLASS 52 UNLESS OTHERWISE NOTED.
- TOPS OF ALL WATER MAINS TO HAVE MINIMUM OF 3'-1/2" COVER UNLESS OTHERWISE NOTED.
- VALVES ADJACENT TO TEES SHALL BE STRAPPED TO TEES.
- ALL FITTINGS SHALL BE BUTTRESSED OR ANCHORED WITH CONCRETE IN ACCORDANCE WITH THE STANDARD DETAILS UNLESS OTHERWISE PROVIDED FOR ON THE DRAWINGS.
- FIRE HYDRANTS SHALL BE SET TO THE BURY LINE ELEVATIONS SHOWN ON THE DRAWINGS. ALL FIRE HYDRANTS SHALL BE STRAPPED AND BUTTRESSED WITH CONCRETE IN ACCORDANCE WITH STANDARD DETAILS. SOIL AROUND THE FIRE HYDRANT SHALL BE COMPACTED IN ACCORDANCE WITH SECTION 1003 OF THE STANDARD SPECIFICATIONS.
- THE CONTRACTOR SHALL NOT OPERATE ANY WATER VALVES ON THE EXISTING WATER SYSTEM.
- ALL WORK SHALL BE IN ACCORDANCE WITH HOWARD COUNTY STANDARDS AND SPECIFICATIONS FOR SOIL EROSION AND SEDIMENT CONTROL 219.
- HORIZONTAL AND VERTICAL CONTROL ARE BASED ON HOWARD COUNTY CONTRACT NO. 20-3013 AND COUNTY MONUMENTS:
 - A) MON. NO. 1844001 BEING A NEAR SET 27.8' ± NORTH OFF THE EDGE OF BROOK BRIDGE ROAD N 489,818.502 E 868,360.940 ELEV. 170.974
 - B) MON. NO. 1843007 BEING A NEAR SET 14' ± SOUTH OFF THE CENTERLINE OF BROOK BRIDGE ROAD N 489,424.430 E 857,132.358 ELEV. 174.808

- APPROXIMATE LOCATION OF EXISTING MANS ARE SHOWN. THE CONTRACTOR SHALL TAKE ALL NECESSARY PRECAUTIONS TO PROTECT EXISTING MANS AND MAINTAIN UNINTERRUPTED SERVICE. ANY DAMAGE INCURRED SHALL BE REPAIRED IMMEDIATELY TO THE SATISFACTION OF THE ENGINEER AT THE CONTRACTOR'S EXPENSE.
- ALL HORIZONTAL CONTROLS ARE BASED ON MARYLAND STATE COORDINATES.
- ALL VERTICAL CONTROLS ARE BASED ON U.S.G.S. DATA.
- ALL PIPE ELEVATIONS SHOWN ARE INVERT ELEVATIONS.

- REMOVE CAP & BUTTRESS AND CONN. TO EX. 12" W W/PROP. 12" SLEEVE
- FOR DETAILS NOT SHOWN ON THE DRAWINGS, AND FOR MATERIALS AND CONSTRUCTION METHODS, USE HOWARD COUNTY DESIGN MANUAL, VOLUME IV, STANDARD SPECIFICATIONS AND DETAILS FOR CONSTRUCTION. THE CONTRACTOR SHALL HAVE A COPY OF VOLUME IV ON THE JOB.
- WHERE TEST PITS HAVE BEEN MADE ON EXISTING UTILITIES, THEY ARE NOTED BY THE SYMBOL AT THE LOCATION OF THE TEST PIT. A NOTE OR NOTES CONTAINING THE RESULTS OF THE TEST PIT OR PITS IS INCLUDED IN THE DRAWINGS. EXISTING UTILITIES IN THE VICINITY OF THE PROPOSED WORK FOR WHICH TEST PITS HAVE NOT BEEN MADE SHALL BE LOCATED BY THE CONTRACTOR TWO WEEKS IN ADVANCE OF CONSTRUCTION OPERATIONS AT HIS OWN EXPENSE.
- CONTRACTOR SHALL NOTIFY THE FOLLOWING UTILITY COMPANIES OR AGENCIES AT LEAST FIVE WORKING DAYS BEFORE STARTING WORK SHOWN ON THESE PLANS:
 - STATE HIGHWAY ADMINISTRATION - 531-5533
 - BALTIMORE GAS & ELECTRIC CO. SERVICES 850-4820
 - BALTIMORE GAS & ELECTRIC CO. UNDERGROUND DAMAGE CONTROL 859-8004
 - BALTIMORE GAS & ELECTRIC CO. TROUBLE SHOOTING - 298-9001
 - METS UTILITY - 800-257-7777
 - COLONIAL PIPELINE - 782-1290
 - BUREAU OF UTILITIES, HOWARD COUNTY DEPT. OF PUBLIC WORKS- 313-4900
- TREES AND SHRUBS ARE TO BE PROTECTED FROM DAMAGE TO MAINTAIN EXTEND. TREES AND SHRUBS LOCATED WITHIN THE CONSTRUCTION STRIP ARE NOT TO BE REMOVED OR DAMAGED BY THE CONTRACTOR.
- CONTRACTOR SHALL REMOVE TREES, STUMPS AND ROOTS ALONG LINE OF EXCAVATION. PAYMENT FOR SUCH REMOVAL SHALL BE INCLUDED IN THE UNIT PRICE BID FOR CONSTRUCTION OF THE MAIN.
- ALL WATER MAINS TO BE D.I.P. CLASS 52 UNLESS OTHERWISE NOTED.
- TOPS OF ALL WATER MAINS TO HAVE MINIMUM OF 3'-1/2" COVER UNLESS OTHERWISE NOTED.
- VALVES ADJACENT TO TEES SHALL BE STRAPPED TO TEES.
- ALL FITTINGS SHALL BE BUTTRESSED OR ANCHORED WITH CONCRETE IN ACCORDANCE WITH THE STANDARD DETAILS UNLESS OTHERWISE PROVIDED FOR ON THE DRAWINGS.
- FIRE HYDRANTS SHALL BE SET TO THE BURY LINE ELEVATIONS SHOWN ON THE DRAWINGS. ALL FIRE HYDRANTS SHALL BE STRAPPED AND BUTTRESSED WITH CONCRETE IN ACCORDANCE WITH STANDARD DETAILS. SOIL AROUND THE FIRE HYDRANT SHALL BE COMPACTED IN ACCORDANCE WITH SECTION 1003 OF THE STANDARD SPECIFICATIONS.
- THE CONTRACTOR SHALL NOT OPERATE ANY WATER VALVES ON THE EXISTING WATER SYSTEM.
- ALL WORK SHALL BE IN ACCORDANCE WITH HOWARD COUNTY STANDARDS AND SPECIFICATIONS FOR SOIL EROSION AND SEDIMENT CONTROL 219.
- HORIZONTAL AND VERTICAL CONTROL ARE BASED ON HOWARD COUNTY CONTRACT NO. 20-3013 AND COUNTY MONUMENTS:
 - A) MON. NO. 1844001 BEING A NEAR SET 27.8' ± NORTH OFF THE EDGE OF BROOK BRIDGE ROAD N 489,818.502 E 868,360.940 ELEV. 170.974
 - B) MON. NO. 1843007 BEING A NEAR SET 14' ± SOUTH OFF THE CENTERLINE OF BROOK BRIDGE ROAD N 489,424.430 E 857,132.358 ELEV. 174.808

DEVELOPER'S CERTIFICATION	ENGINEER'S CERTIFICATION
I hereby certify that all development and construction shown on this plan is in accordance with the applicable provisions of the Howard County Subdivision Ordinance, Chapter 25, and the Howard County Department of Public Works, Chapter 219, and that the construction project will be completed in accordance with the standards and specifications of the Howard County Department of Public Works, Chapter 219.	I certify that this plan for erosion & sediment control is in accordance with the applicable provisions of the Howard County Subdivision Ordinance, Chapter 25, and the Howard County Department of Public Works, Chapter 219, and that the construction project will be completed in accordance with the standards and specifications of the Howard County Department of Public Works, Chapter 219.
 DATE: 3-26-91	 DATE: 3-26-91
APPROVED FOR HOWARD S.C.D. AND METS UTILITY DIVISION	THE DEVELOPER'S PLAN IS APPROVED FOR THE S.O.C. AND EROSION CONTROL MEASURES.
DATE: 3-26-91	DATE: 3-26-91



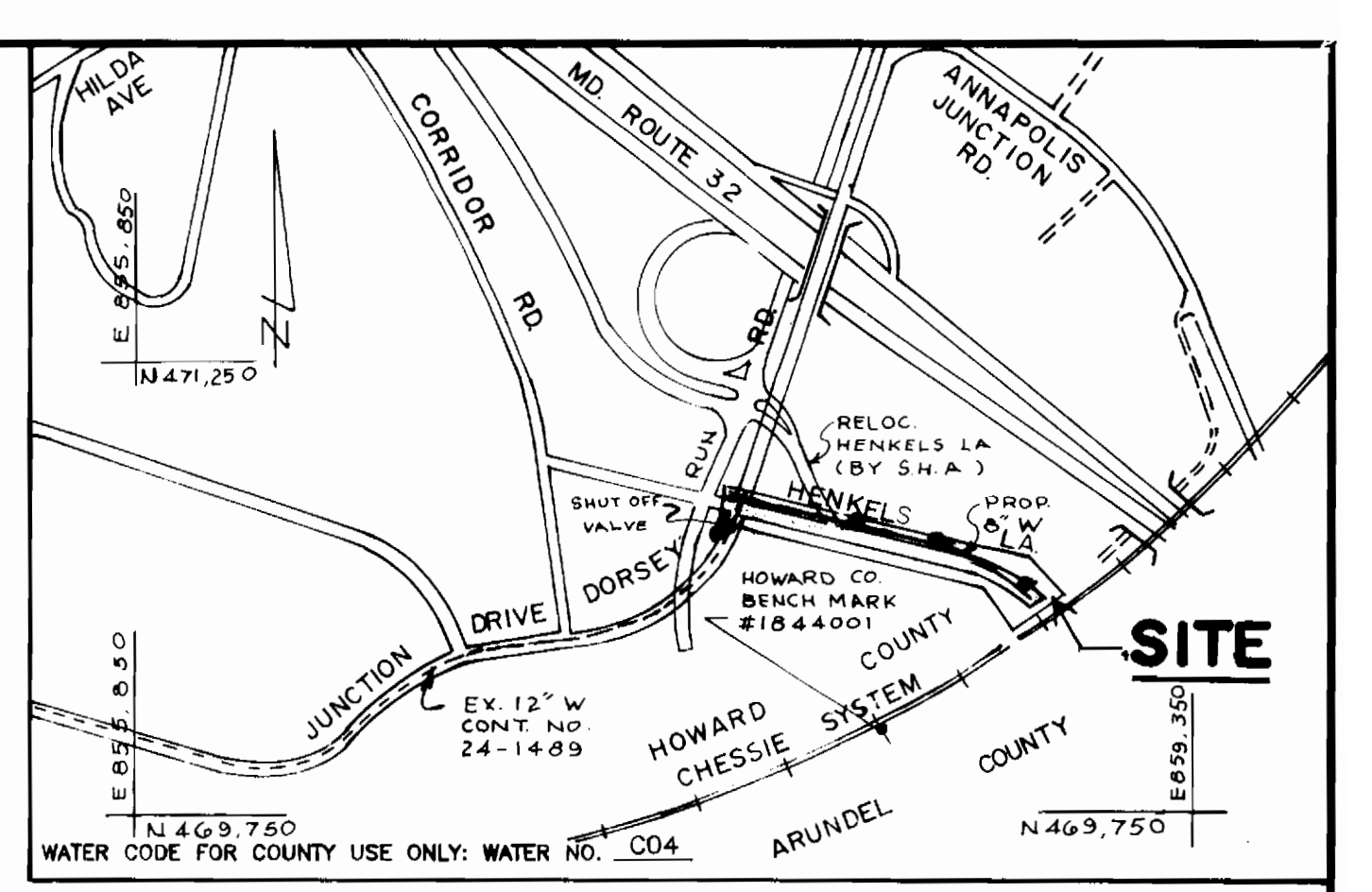
SCALE: HORIZ. 1"=50'
VERT. 1"=5'

STAKEOUT TABLE 12" W & 8" W

POINT ON 12" W & 8" W	TRAVERSE LINE LOCATION	RIGHT ANGLE OFFSET
W.L. 0+00	903A TO 904	58.5' LT.
12" X 8" TEE	903A TO 904	68.5' LT.
W.L. 0+10	903A TO 904	44.5' RT.
8" VALVE	903A TO 904	58' LT.
W.L. 4+90	903A TO 904	30' RT.
8" F.H.	903A TO 904	20' RT.
W.L. 6+67	903A TO 904	12' RT.
8" VALVE	904 TO 905	4' RT.
W.L. 10+98	904 TO 905	15' RT.
W.L. 11+50	904 TO 905	15' RT.

QUANTITIES

ITEM	UNIT	ESTIMATE	AS-BUILT	MATERIAL SUPPLIER
PART 'A' - WATER MAIN EXTENSION				
8" WATER & FTGS.	L.F.	1,150		
12" WATER & FTGS.	L.F.	45		
F.H., 6" VALVE, PIPE & FTGS.	E.A.	3		
PART 'B' - WATER HOUSE CONNECTIONS				
3/4" W.H.C.	L.F.	143		
2" W.H.C.	L.F.	18		



RESTORATION SCHEDULE

LOCATION	DISTANCE	TYPE
EX. WATER MAIN TO PROP. 12" X 8" TEE (STA. 0+00)	32 L.F.	PAVING
PROP. 12" X 8" TEE (0+00) TO 12" PROP. CAP (0+15)	15 L.F.	PAVING
PROP. 12" X 8" TEE (0+00) TO STA. 0+43	43 L.F.	PAVING
STA. 0+43 TO STA. 8+20	777 L.F.	SEED & MULCH
STA. 8+20 TO STA. 11+50	330 L.F.	PAVING

DEPARTMENT OF PUBLIC WORKS HOWARD COUNTY, MARYLAND		 SPOTTIS, STEVENS & McCOY, INC. ENGINEERS - SURVEYORS - PLANNERS - SCIENTIST 555 FAIRMOUNT AVE., SUITE 230 TOWSON, MD. 21284 (501) 494-0300	DES: G.S. DRN: G.S. CHK: T.W. DATE: JAN. 91	8-INCH WATER MAIN PLAN & PROFILE		HENKELS LANE WATER EXTENSION CAPITAL PROJECT: W-8176 ELECTION DISTRICT NO.6 CONTRACT NO. 44-3118	SCALE 1"=50' SHEET 1 OF 1
 DIRECTOR OF PUBLIC WORKS DATE: 3-26-91	 CHIEF, BUREAU OF ENGINEERING DATE: 3-26-91	 CHIEF, BUREAU OF UTILITIES DATE: 3-26-91	BY: NO.	REVISION	DATE	600' SCALE MAP NO. 48 BLOCK NO. 19	

AS BUILT