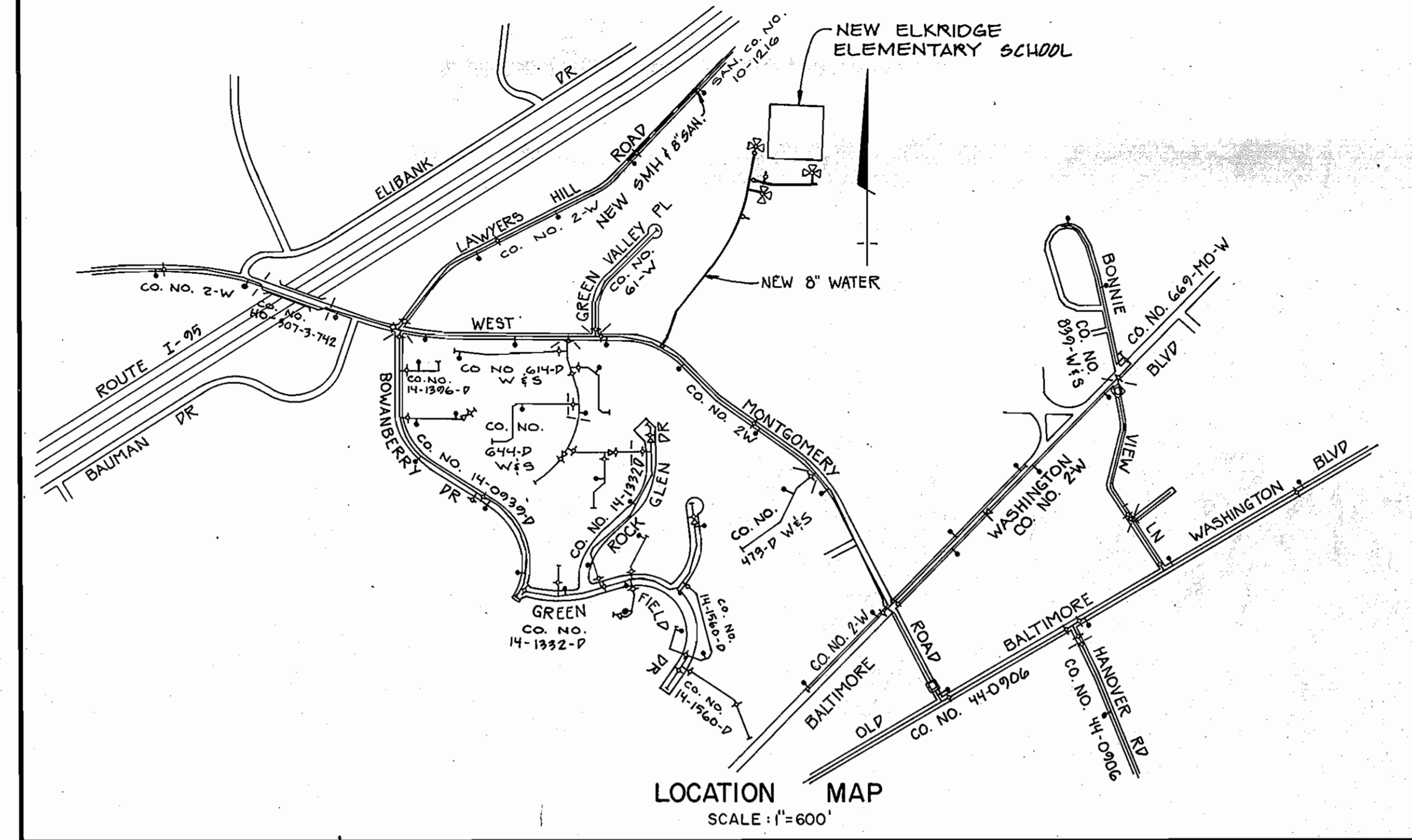


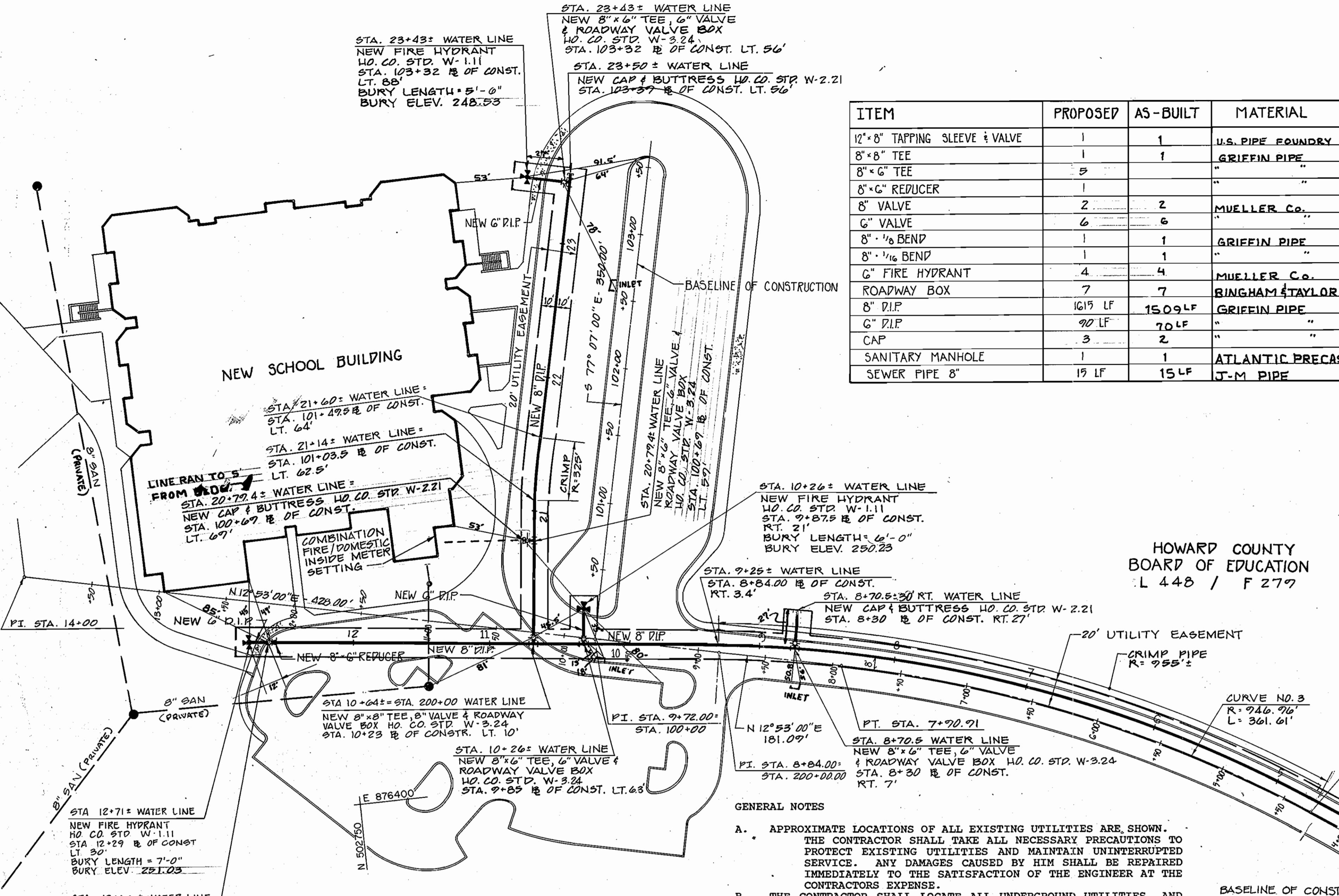
ITEM	PROPOSED	AS-BUILT	MATERIAL
12" 8" TAPPING SLEEVE & VALVE	1	1	U.S. PIPE FOUNDRY
8" 8" TEE	1	1	GRIFFIN PIPE
8" 6" TEE	5	5	"
8" 6" REDUCER	1	1	"
8" VALVE	2	2	MUELLER Co.
6" VALVE	6	6	"
8" 1/2 BEND	1	1	GRIFFIN PIPE
8" 1/4 BEND	1	1	"
6" FIRE HYDRANT	4	4	MUELLER Co.
ROADWAY BOX	7	7	BINGHAM & TAYLOR
8" D.I.P.	1615 LF	1509 LF	GRIFFIN PIPE
6" D.I.P.	90 LF	70 LF	"
CAP	3	2	"
SANITARY MANHOLE	1	1	ATLANTIC PRECAST
SEWER PIPE 8"	19 LF	15 LF	J-T-M PIPE



WATER CODE 009 SEWER CODE 2150348

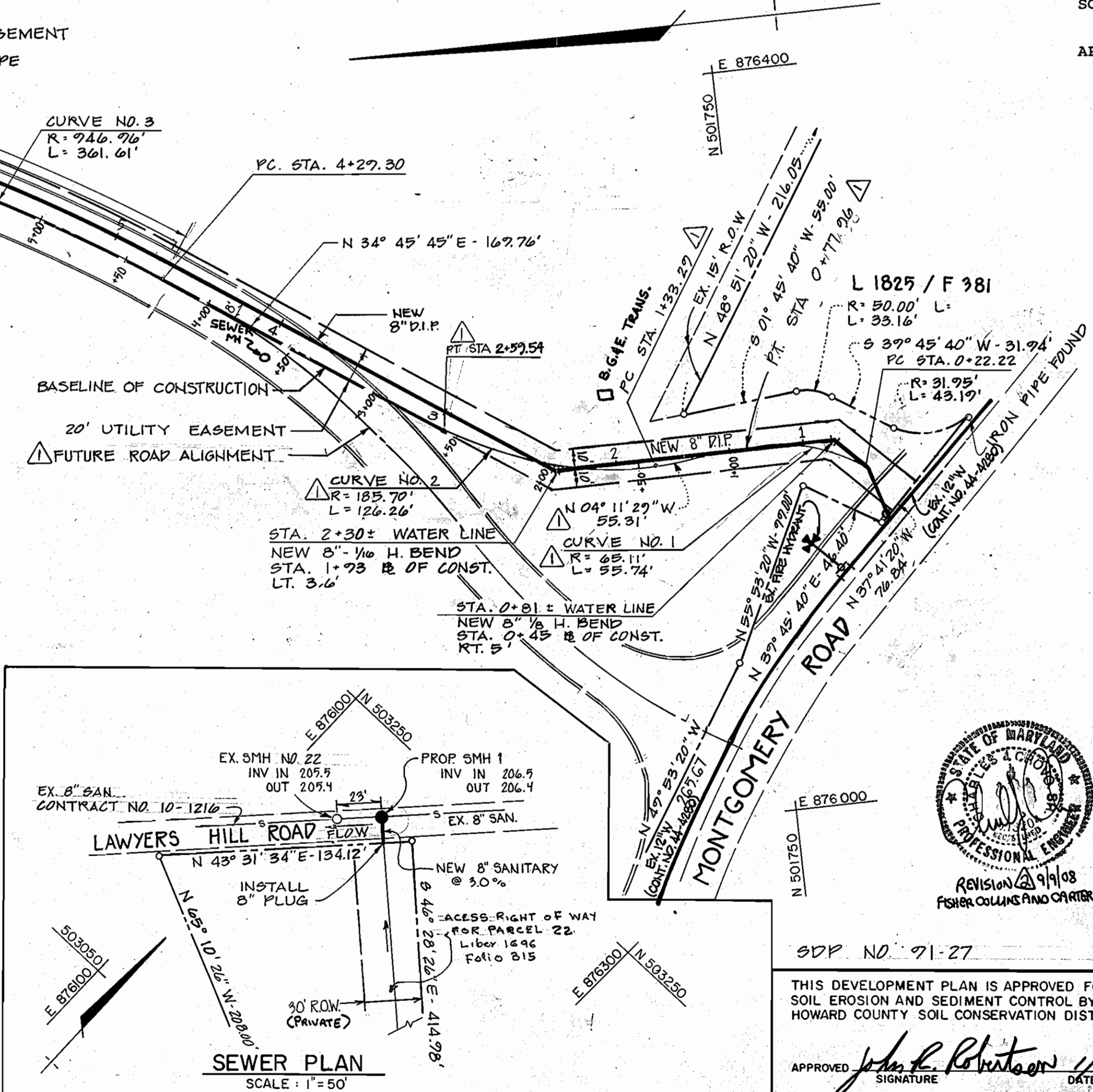
THIS DEVELOPMENT PLAN IS APPROVED FOR SOIL EROSION AND SEDIMENT CONTROL BY THE HOWARD COUNTY SOIL CONSERVATION DISTRICT

APPROVED *John P. Roberts* DATE 1/23/91
HOWARD S.C.D.

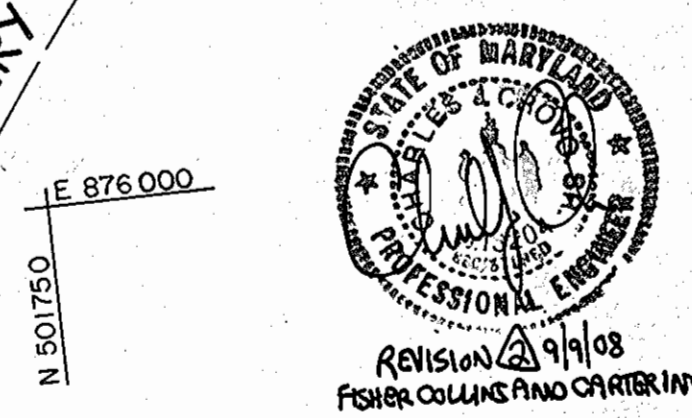


HOWARD COUNTY BOARD OF EDUCATION
L 448 / F 277

- GENERAL NOTES
- APPROXIMATE LOCATIONS OF ALL EXISTING UTILITIES ARE SHOWN. THE CONTRACTOR SHALL TAKE ALL NECESSARY PRECAUTIONS TO PROTECT EXISTING UTILITIES AND MAINTAIN UNINTERRUPTED SERVICE. ANY DAMAGES CAUSED BY HIM SHALL BE REPAIRED IMMEDIATELY TO THE SATISFACTION OF THE ENGINEER AT THE CONTRACTOR'S EXPENSE.
 - THE CONTRACTOR SHALL LOCATE ALL UNDERGROUND UTILITIES, AND SHALL BE FULLY RESPONSIBLE FOR ANY DAMAGES CAUSED BY HIS FAILURE TO ACCURATELY LOCATE ANY UNDERGROUND UTILITY, FACILITY, OR STRUCTURE. THE CONTRACTOR SHALL LOCATE THE UTILITIES AT HIS OWN EXPENSE.
 - ALL HORIZONTAL CONTROL IS BASED ON THE MARYLAND STATE COORDINATE SYSTEM.
 - ALL VERTICAL CONTROL IS BASED ON THE USGS VERTICAL DATUM OF 1929.
 - ALL PIPE ELEVATIONS SHOWN ARE INVERT ELEVATIONS.
 - CLEAR ALL UTILITIES BY A MINIMUM OF 6". CLEAR ALL POLES BY A MINIMUM OF 2 FEET. ANY COST INCURRED BY THE CONTRACTOR FOR BRACING OR TUNNELING SHALL BE INCLUDED IN THE UNIT PRICE BID FOR CONSTRUCTION OF THE WATER MAIN.
 - FOR DETAILS NOT SHOWN ON THE DRAWINGS USE THE HOWARD COUNTY STANDARD DETAILS.
 - THE CONTRACTOR SHALL NOTIFY THE FOLLOWING UTILITIES AT LEAST 5 BUSINESS DAYS BEFORE BEGINNING ANY WORK.
STATE HIGHWAY ADMINISTRATION 531-5533
BG&E - UNDERGROUND ELECTRIC DISTRIBUTION CUSTOMER SERVICE 685-0123
BG&E - UNDERGROUND GAS DISTRIBUTION CUSTOMER SERVICE 685-0123
ENGINEERING DAMAGE CONTROL 234-5621
'MISS UTILITY' 1-800-257-7777
CHESAPEAKE & POTOMAC TELEPHONE CO. (C&P) 725-9376
AMERICAN TELEPHONE AND TELEGRAPH - CABLE LOCATION DIVISION 393-3553
COLONIAL PIPELINE COMPANY 795-1390
BUREAU OF UTILITIES HOWARD COUNTY 313-4900
 - TREES ARE TO BE PROTECTED FROM DAMAGE TO THE MAXIMUM EXTENT POSSIBLE.
 - THE CONTRACTOR SHALL REMOVE ALL STUMPS AND ROOTS ALONG THE LINE OF EXCAVATION AS DIRECTED BY THE ENGINEER. PAYMENT FOR REMOVAL SHALL BE INCLUDED IN THE UNIT PRICE BID FOR CONSTRUCTION OF THE WATER MAIN.
 - PLACE THE REQUIRED "MEN WORKING" AND OTHER APPROPRIATE WARNING SIGNS AS REQUIRED TO COMPLY WITH THE MARYLAND STATE HIGHWAY ADMINISTRATION MANUAL OF TRAFFIC CONTROL FOR HIGHWAY CONSTRUCTION AND MAINTENANCE OPERATIONS.
 - SEDIMENT CONTROL MEASURES SECTION 219 WILL BE IMPLEMENTED IN ACCORDANCE WITH ARTICLE 15 OF THE SPECIFICATIONS AND SDP 21-27.



- WATER MAIN NOTES
- ALL WATER MAINS TO BE DIP UNLESS OTHERWISE NOTED.
 - THERE SHALL BE A MINIMUM OF 3 1/2 FEET OF COVER OVER ALL NEW WATER MAINS UNLESS OTHERWISE NOTED.
 - VALVES, HYDRANTS, AND METERS ADJACENT TO TEES SHALL BE STRAPPED OR RESTRAINED.
 - ALL FITTINGS SHALL HAVE CONCRETE THRUST BLOCKS.
 - BURY LINE ELEVATIONS ON FIRE HYDRANTS SHALL BE SET TO THE ELEVATIONS SHOWN ON THE DRAWING. ALL FIRE HYDRANTS SHALL BE STRAPPED AND BUTTRESSED WITH CONCRETE IN ACCORDANCE WITH THE HOWARD COUNTY STANDARD DETAILS. SOIL AROUND THE FIRE HYDRANT TO BE COMPACTED IN ACCORDANCE WITH SECTIONS 1C30 AND 1005 OF THE HOWARD COUNTY STANDARD SPECIFICATIONS.
 - THE CONTRACTOR SHALL NOT OPERATE ANY WATER MAIN VALVES ON THE EXISTING SYSTEM.
- SEWER NOTES
- ALL SEWER MAINS SHALL BE C.S.P.X., R.C.S.P., V.C.P.X. OF PVC UNLESS OTHERWISE NOTED.
 - THE CONTRACTOR SHALL PROVIDE A JOINT IN ALL SEWER MAINS WITHIN 2 FEET OF EXTERIOR MANHOLE WALLS.
 - ALL MANHOLES SHALL HAVE A 4 FOOT INSIDE DIAMETER.
 - FORCE MAINS SHALL BE D.I.P. ONLY.
 - MANHOLES SHOWN WITH 12" AND 16" WALLS ARE TO BE BRICK MANHOLES ONLY.
 - MANHOLES DESIGNATED WITH WT IN PLAN AND PROFILE SHALL HAVE WATERTIGHT FRAMES AND COVERS, STANDARD DETAIL G.5.52. WHERE WATERTIGHT MANHOLE FRAMES AND COVERS ARE USED SET TOP OF FRAME 1'-6" ABOVE FINISHED GRADE STANDARD DETAIL G.5.41.



WATER HOUSE CONNECTION / SEWER HOUSE CONNECTION 1

LOT AND TYPE 1 ELEMENTARY SCHOOL

DRAINAGE/TREATMENT PLANT BASIN PATAPSCO, MD

SDP NO. 91-27

THIS DEVELOPMENT PLAN IS APPROVED FOR SOIL EROSION AND SEDIMENT CONTROL BY THE HOWARD COUNTY SOIL CONSERVATION DISTRICT.

APPROVED *John P. Roberts* DATE 1/23/91
HOWARD COUNTY SOIL CONSERVATION DISTRICT

REVIEWED FOR HOWARD COUNTY SOIL CONSERVATION DISTRICT AND MEETS TECHNICAL REQUIREMENTS.

APPROVED *James M. Helms* DATE 1/23/91
U.S. SOIL CONSERVATION SERVICE

DEPARTMENT OF PUBLIC WORKS
HOWARD COUNTY, MARYLAND

James M. Helms 1/24/91
DIRECTOR OF PUBLIC WORKS DATE

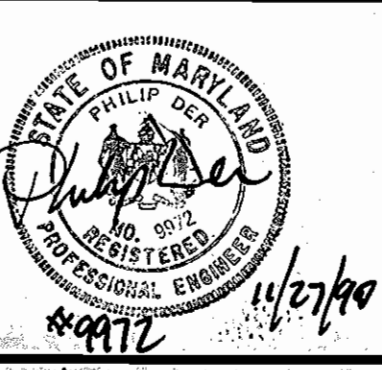
Robert H. Beemer 1/17/91
CHIEF BUREAU OF UTILITIES DATE

William E. Reddy 1-24-91
CHIEF BUREAU OF ENGINEERING DATE

John P. Roberts 1/24/91
CHIEF LAND DEVELOPMENT DIVISION DATE

HITNEY AILEY CONSULTING ENGINEERS
1850 York Road
Timonium Md. 21093
301-252-6060

FOX AGNANI



DES. S.A.S.	WEM	REVIEWED PER HOWARD COUNTY	DATE
	MWM	AS-BUILT	11/21/91
	PC	REVISED WATER MAIN PER CONTRACT NO. 44-1080 AND REMOVED EXISTING FIRE HYDRANT	9/22/92
			9/9/92
CHK. P. D.			
DATE: 10/5/90	BY: NO	REVISION	DATE

NEW SANITARY SEWER & NEW WATER MAIN PLAN AND PROFILE

CONTRACT NO. 14-3102-D

600' SCALE MAP NO. W38 BLOCK NO.

ELKRIDGE ELEMENTARY SCHOOL

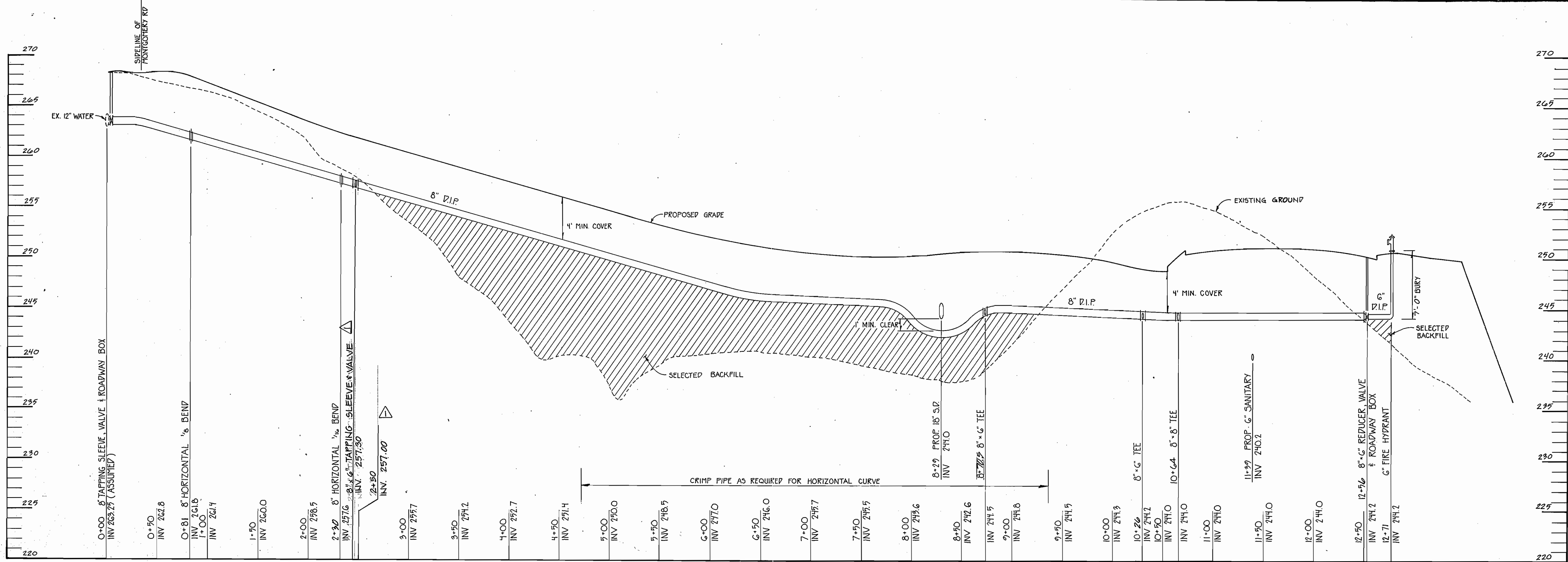
AS-BUILT ELECTION DISTRICT NO. 1

9/22/92

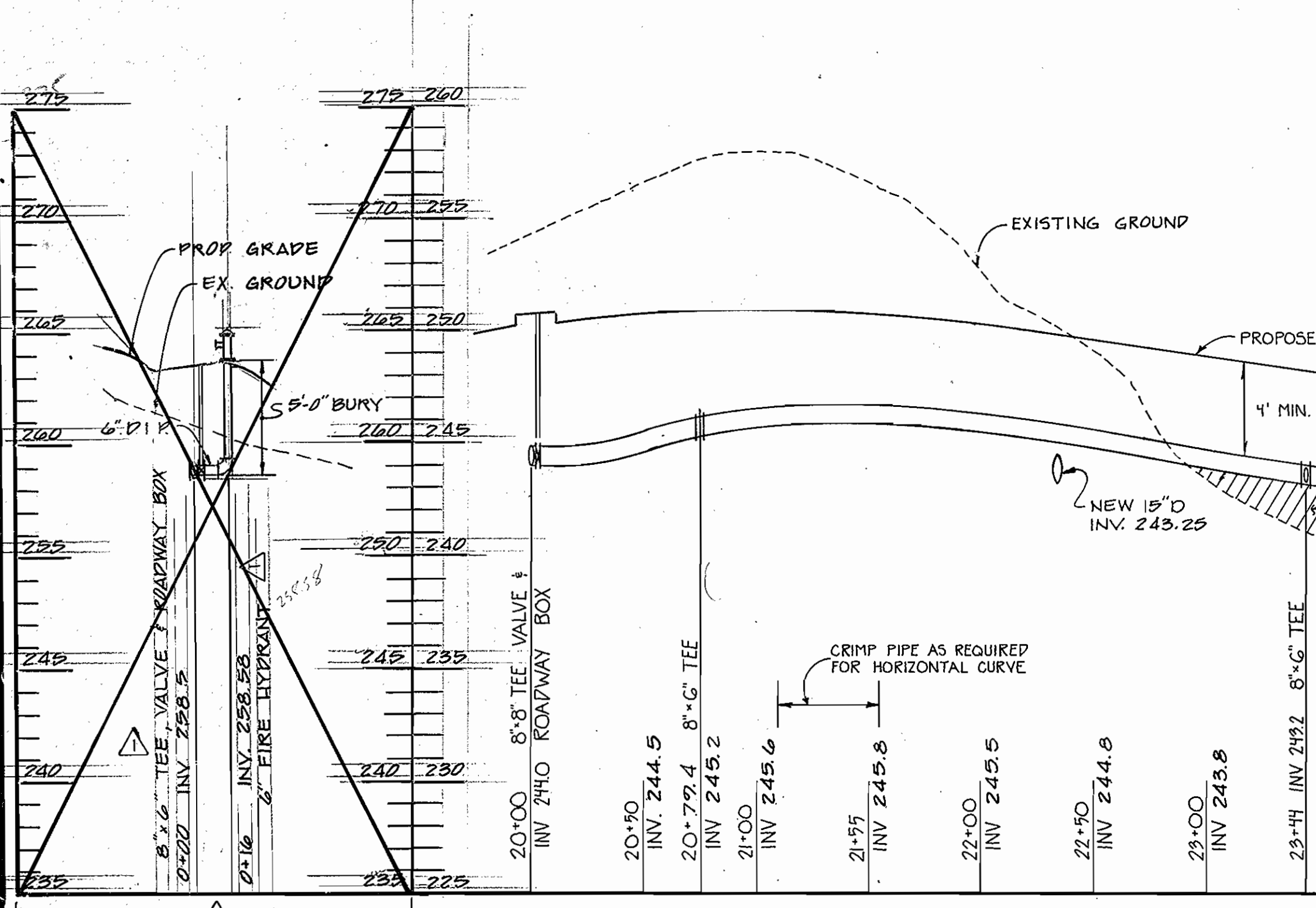
SCALE AS SHOWN

SHEET 1 OF 2

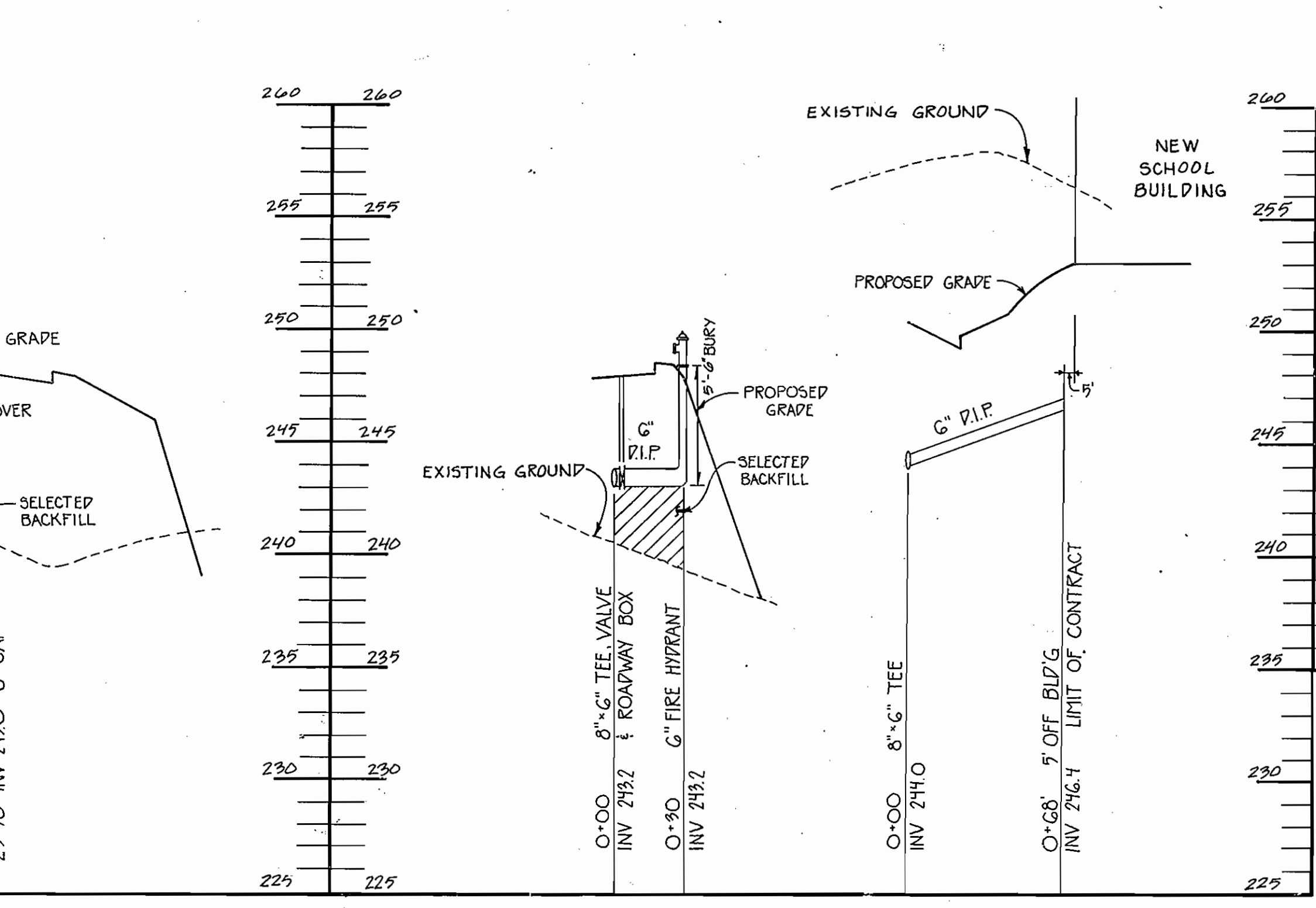
AS-BUILT 2-18-92



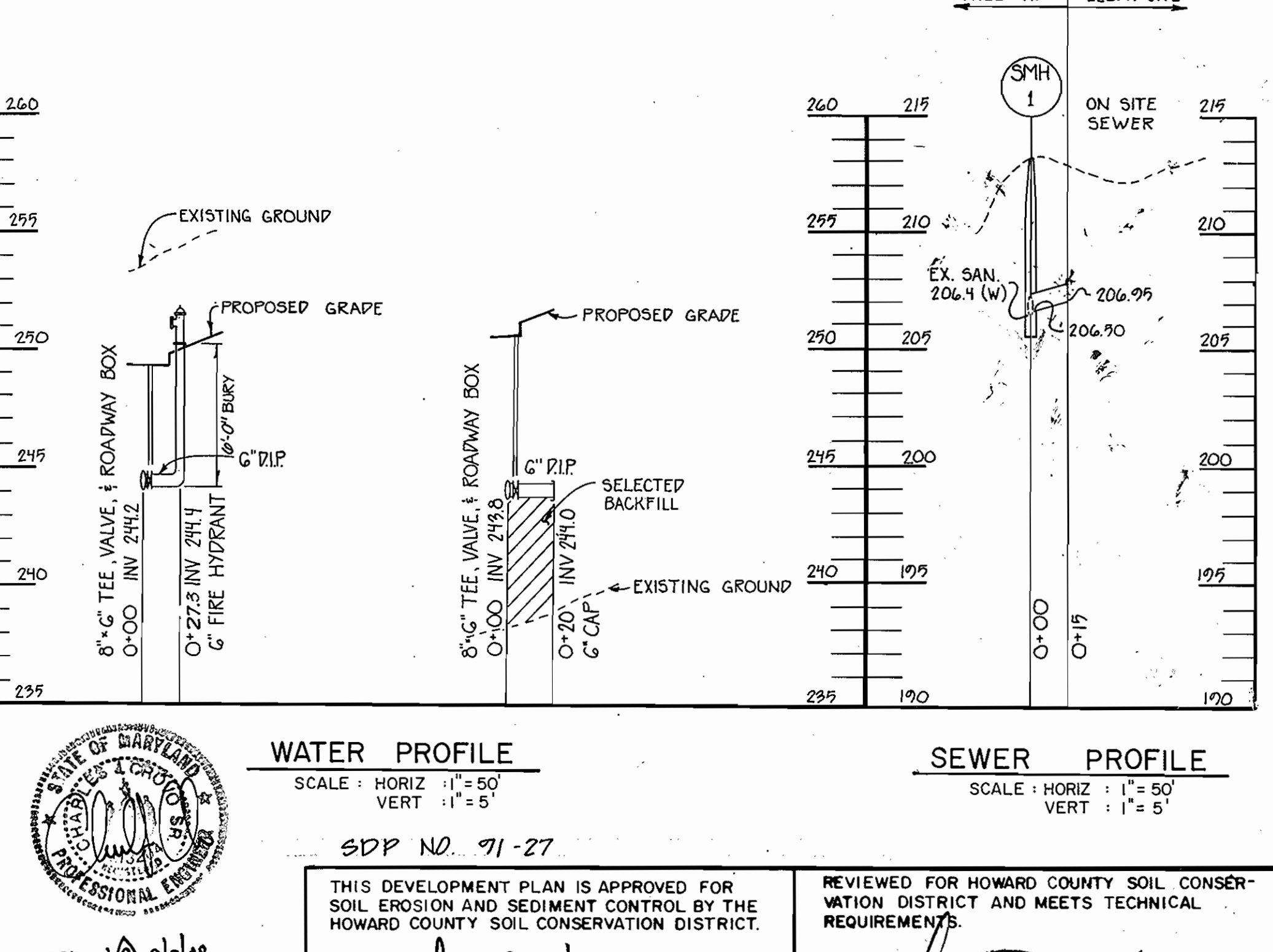
WATER PROFILE
 SCALE: HORIZ: 1" = 50'
 VERT: 1" = 5'
 (NOTE STATIONING IS ALONG PIPE)



WATER PROFILE
 SCALE: HORIZ: 1" = 50'
 VERT: 1" = 5'
 (NOTE STATIONING IS ALONG PIPE)



WATER PROFILE
 SCALE: HORIZ: 1" = 50'
 VERT: 1" = 5'



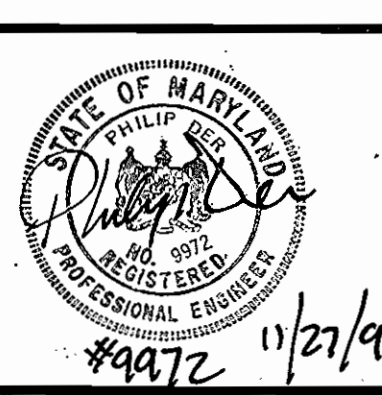
SEWER PROFILE
 SCALE: HORIZ: 1" = 50'
 VERT: 1" = 5'



SDP NO. 91-27
 THIS DEVELOPMENT PLAN IS APPROVED FOR SOIL EROSION AND SEDIMENT CONTROL BY THE HOWARD COUNTY SOIL CONSERVATION DISTRICT.
 APPROVED: *Robert M. Nelson* 1/23/91
 SIGNATURE DATE
 HOWARD COUNTY SOIL CONSERVATION DISTRICT
 REVIEWED FOR HOWARD COUNTY SOIL CONSERVATION DISTRICT AND MEETS TECHNICAL REQUIREMENTS.
 APPROVED: *Robert M. Nelson* 1-23-91
 SIGNATURE DATE
 U.S. SOIL CONSERVATION SERVICE

DEPARTMENT OF PUBLIC WORKS
HOWARD COUNTY, MARYLAND
 Director of Public Works: *James J. ...* 1/24/91
 Chief Bureau of Engineering: *Robert M. Nelson* 1/24/91
 Chief Bureau of Utilities: *Robert M. Nelson* 1/24/91
 Chief Land Development Division: *Robert M. Nelson* 1/24/91

HITNEY AILEY FOX AGNANI
 CONSULTING ENGINEERS
 1850 York Road
 Timonium Md. 21093
 301-252-6060



DES. S.A.S.	WCM	REVISION PER HOWARD COUNTY	11/21/91
DRN. S.A.S.	YAC	REMOVED FIRE HYDRANT PROFILE	9/9/88
CHK. P. D.			
DATE: 10/12/90	BY: NO	REVISION	DATE

NEW SANITARY SEWER & NEW WATER MAIN PLAN AND PROFILE
 CONTRACT NO. 14-3102-D
 600' SCALE MAP NO. W38 BLOCK NO.

ELKRIDGE ELEMENTARY SCHOOL
ELECTION DISTRICT NO. 1
 SCALE AS SHOWN
 SHEET 2 OF 2