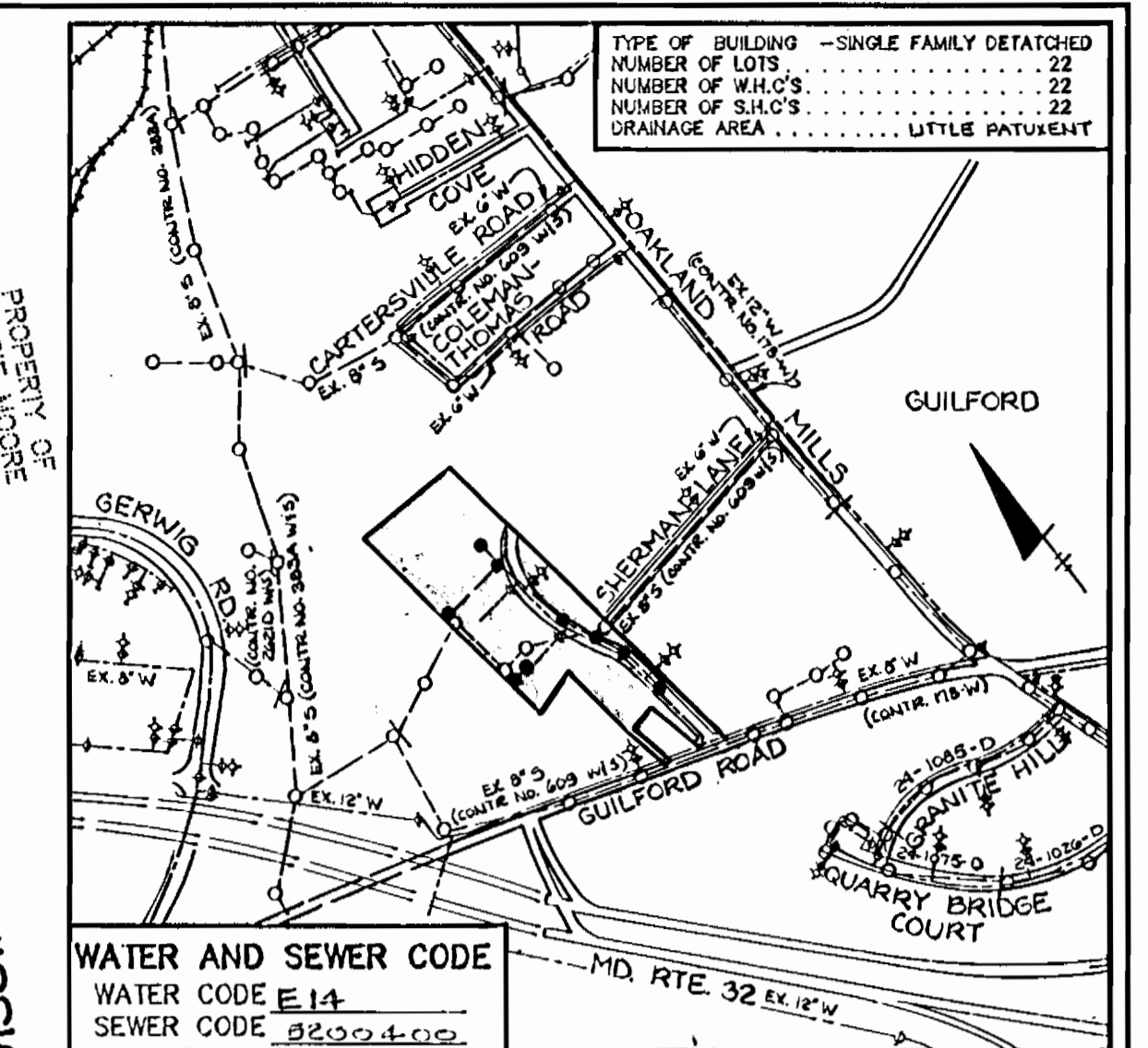


NOTE:

- 1. USE D.I.P. CLASS 52 FOR 4 INCH WATER MAIN.
- 2. FOR ALL WATER CONNECTIONS AT THIS 4 INCH WATER MAIN USE STAINLESS STEEL SERVICE SADDLES.

PROPERTY OF  
GEORGE SUPSIC  
872 / 405

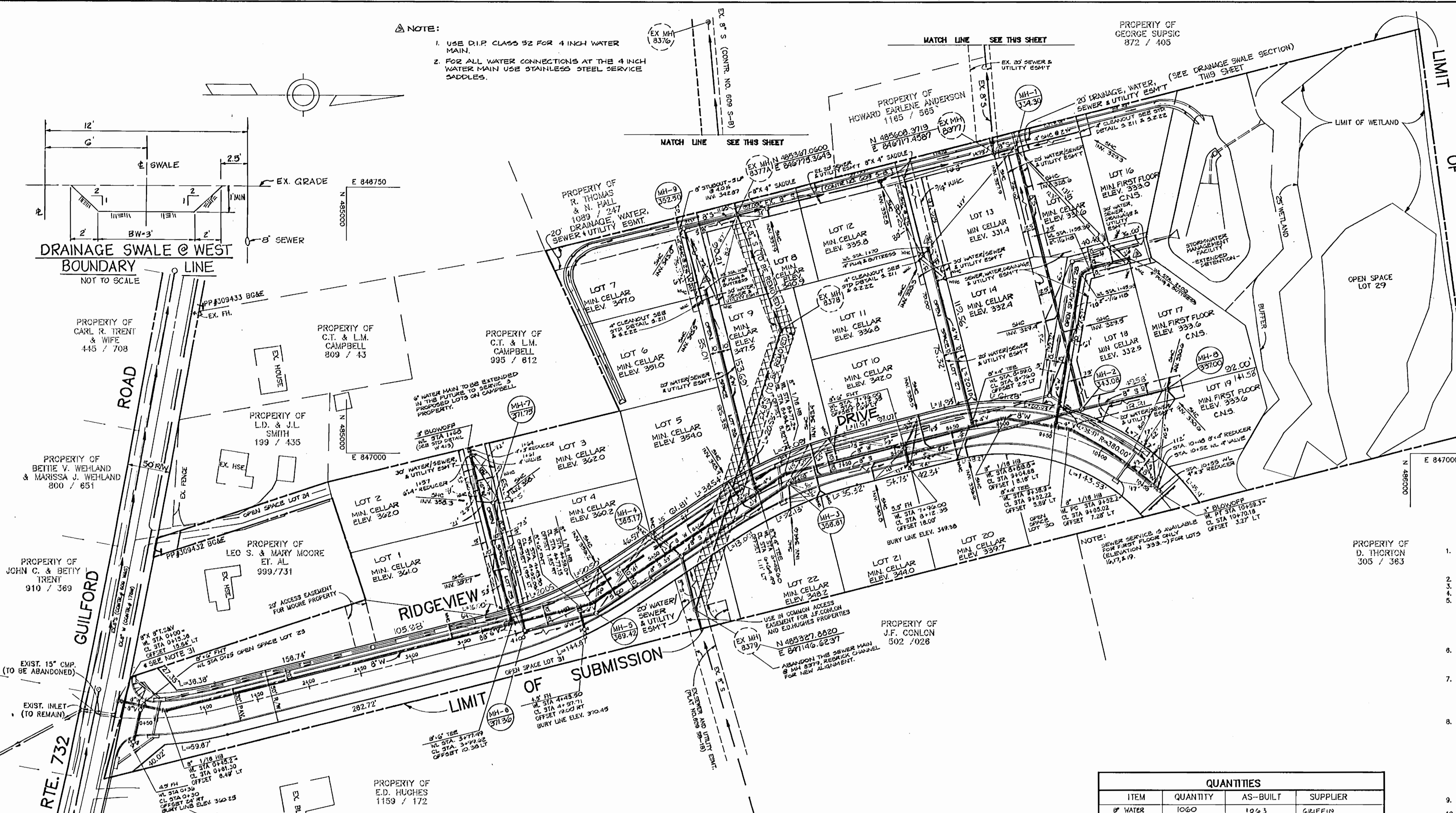


**BENCH MARKS**

HO. CO. # 2242001	ELEV. 358.340
CONC. MON. 4" SOUTH OF SOUTH EDGE OF GUILFORD ROAD NEAR HOUSE #3355, 1' BELOW SURFACE	N 484828.330 E 846868.185
HO. CO. # 2242002	ELEV. 365.719
REBAR 7.75" NORTH EAST OF H&L & CAP IN POLE CAP #1 ON THE NORTH EAST SIDE OF OAKLAND MILLS ROAD NEAR THE INTERSECTION OF GUILFORD ROAD (SEE 32)	N 484817.531 E 847987.759

**GENERAL NOTES**

- APPROXIMATE LOCATION OF EXISTING MAINS ARE SHOWN. THE CONTRACTOR SHALL TAKE ALL NECESSARY PRECAUTIONS TO PROTECT EXISTING MAINS AND SERVICES AND MAINTAIN UNINTERRUPTED SUPPLY. ANY DAMAGE INCURRED SHALL BE REPAIRED IMMEDIATELY TO THE SATISFACTION OF THE ENGINEER AT THE CONTRACTOR'S EXPENSE.
- ALL HORIZONTAL CONTROLS ARE BASED ON MARYLAND STATE COORDINATES.
- ALL VERTICAL CONTROLS ARE BASED ON U.S.G.C. DATA.
- ALL PIPE ELEVATIONS SHOWN ARE INVERT ELEVATIONS.
- CLEAR ALL UTILITIES BY A MINIMUM OF 8". CLEAR ALL POLES BY 2'-0" MINIMUM OR TUNNEL AS REQUIRED. THE OWNER HAS CONTACTED THE UTILITY COMPANY AND HAS MADE ARRANGEMENTS FOR BRACING OF POLES AS SHOWN. IN THE EVENT THE CONTRACTOR'S WORK REQUIRES ADDITIONAL BRACING OF POLES, ANY COST INCURRED BY THE OWNER FOR THE BRACING OF ADDITIONAL POLES OR DAMAGES SHALL BE DEDUCTED FROM MONEY OWED TO THE CONTRACTOR. THE CONTRACTOR SHALL COORDINATE WITH THE UTILITY COMPANY TO SCHEDULE THE BRACING OF THE POLES.
- FOR DETAILS NOT SHOWN ON THE DRAWINGS, AND FOR MATERIALS AND CONSTRUCTION METHODS, USE HOWARD COUNTY DESIGN MANUAL VOLUME IV, STANDARD SPECIFICATIONS AND DETAILS FOR CONSTRUCTION. THE CONTRACTOR SHALL HAVE A COPY OF VOLUME IV ON THE JOB.
- WHERE TEST PITS HAVE BEEN MADE ON EXISTING UTILITIES, THEY ARE NOTED BY THE SYMBOL AT THE LOCATION OF THE TEST PIT. A NOTE OR NOTES CONTAINING THE RESULTS OF THE TEST PIT OR PITS IS INCLUDED ON THE DRAWINGS. EXISTING UTILITIES IN THE VICINITY OF THE PROPOSED WORK FOR WHICH TEST PITS HAVE BEEN DUG SHALL BE LOCATED BY THE CONTRACTOR TWO WEEKS IN ADVANCE OF CONSTRUCTION OPERATIONS AT THE CONTRACTOR'S EXPENSE.
- CONTRACTOR SHALL NOTIFY THE FOLLOWING UTILITIES OR AGENCIES AT LEAST FIVE WORKING DAYS BEFORE STARTING WORK SHOWN ON THESE PLANS:
  - C&P TELEPHONE.....1-800-237-7777
  - STATE HIGHWAY ADMINISTRATION.....531-5533
  - BALTIMORE GAS & ELECTRIC CO. CONTROL SERVICES.....850-4820
  - BALTIMORE GAS & ELECTRIC CO. UNDERGROUND DAMAGE CONTROL.....859-9004
  - BALTIMORE GAS & ELECTRIC CO. TROUBLE SHOOTING.....298-9001
  - MESS UTILITY.....1-800-237-7777
  - COLONIAL PIPELINE CO.....795-1390
  - BUREAU OF UTILITIES, HOWARD COUNTY DEPARTMENT OF PUBLIC WORKS.....313-4900



**WATER AND SEWER HOUSE CONNECTION CHART**

LOT #	WATER HOUSE CONNECTION	SEWER HOUSE CONNECTION	COMMENTS
1	WL STA 3+25.1 = CL STA 3+38.0 RIDGEVIEW DR.	STA 0+50 FROM MH 2	
2	WL STA 1+30.0 OPEN SPACE LOT 25	@ MH 7	
3	WL STA 1+38.0 OPEN SPACE LOT 25	@ MH 7	
4	WL STA 5+41.7 = CL STA 5+59.75 RIDGEVIEW DR.	STA 0+70 FROM MH 4	
5	WL STA 5+41.7 = CL STA 5+59.75 RIDGEVIEW DR.	STA 0+45 FROM MH 3	
6	WL STA 1+90 OPEN SPACE LOT 26	STA 0+76 FROM MH 9	
7	WL STA 1+90 OPEN SPACE LOT 26	@ MH-9	
8	WL STA 1+80 OPEN SPACE LOT 26	STA 2+20 FROM EX. MH-8377	8" x 4" SADDLE SHC
9	WL STA 7+30.5 = CL STA 7+46.8 RIDGEVIEW DR.	STA 2+55 FROM MH 2	
10	WL STA 7+30.5 = CL STA 7+46.8 RIDGEVIEW DR.	STA 1+50 FROM MH 2	
11	WL STA 1+65 OPEN SPACE LOT 27	STA 0+80 FROM EX. MH-8377	8" x 4" SADDLE SHC
12	WL STA 1+65 OPEN SPACE LOT 27	STA 1+10 FROM EX. MH-8377	8" x 4" SADDLE SHC
13	WL STA 1+40 OPEN SPACE LOT 27	@ EX MH-8377	
14	WL STA 1+40 OPEN SPACE LOT 27	STA 1+62 FROM MH 1	
15	WL STA 1+80 OPEN SPACE LOT 28	STA 0+40 FROM MH 1	
16	WL STA 1+80 OPEN SPACE LOT 28	STA 0+63 FROM MH 1	CELLAR NOT SERVED
17	WL STA 1+95 OPEN SPACE LOT 28	@ MH-8	CELLAR NOT SERVED
18	WL STA 1+95 OPEN SPACE LOT 28	STA 1+80 FROM MH 1	
19	WL STA 0+28.8 = CL STA 0+40 RIDGEVIEW DR.	@ MH-8	CELLAR NOT SERVED
20	WL STA 8+39.6 = CL STA 8+56 RIDGEVIEW DR.	STA 1+15 FROM MH 2	
21	WL STA 7+05.9 = CL STA 7+19.9 RIDGEVIEW DR.	STA 2+05 FROM MH 2	
22	WL STA 7+05.9 = CL STA 7+19.9 RIDGEVIEW DR.	@ MH-3	

**QUANTITIES**

ITEM	QUANTITY	AS-BUILT	SUPPLIER
8" WATER	1060	1063	GRIFFIN
6" WATER	245	239.5	GRIFFIN
4" WATER	565	534	GRIFFIN
FIRE HYDRANTS	3	3	US PIPE
1" WHC	130	125	HONELL
3/4" WHC	195	154	HONELL
6" VALVE	1	4	MUELLER
4" VALVE	3	5	MUELLER
8" SEWER	1150	1145	S-H MANUFACTURING
MANHOLES	9	3	FERRIS HILL
4" SHC	515	518	S-H HAND
3" BLOWOFF	2	2	KUPFERLE

**SEWER STRUCTURE SCHEDULE**

NO.	LOCATION
MH-1	N 485620.8550 E 846712.2670
MH-2	CL STA 9+70.16 OFFSET 28.77 LT
MH-3	CL STA 6+94.56 OFFSET 3.33 RT
MH-4	CL STA 5+72.23 OFFSET 10.00 RT
MH-5	CL STA 4+78.35 OFFSET 11.77 RT
MH-6	CL STA 4+09.03 OFFSET 0.29 RT
MH-7	N 485136.8177 E 847045.7119
MH-8	N 485771.0935 E 846939.4970
MH-9	N 485316.0080 E 846788.3001

**LEGEND**

- EXIST. WATER MAIN
- EXIST. SEWER MAIN
- EXIST. SEWER MANHOLE
- EXIST. SEWER HOUSE CONNECTION
- PROP. WATER MAIN
- PROP. SEWER MAIN
- PROP. STORM DRAIN (BY OTHERS)
- PROP. SEWER MANHOLE
- PROP. SEWER HOUSE CONNECTION
- PROP. WATER HOUSE CONNECTION (DOUBLE)
- PROP. WATER HOUSE CONNECTION (SINGLE)
- PROP. FIRE HYDRANT
- PROP. VALVE
- PROP. BLOWOFF
- PROP. PLUG AND BUTTRISS
- CELLAR NOT SERVED
- C.N.S.

HOWARD SOIL CONSERVATION DISTRICT: REVIEWED FOR HOWARD SOIL CONSERVATION DISTRICT AND MEETS TECHNICAL REQUIREMENTS

John M. Nelson / JMK 7/12/91 DATE  
U.S. SOIL CONSERVATION SERVICE

THIS PLAN IS APPROVED FOR SOIL EROSION AND SEDIMENT CONTROL BY THE HOWARD SOIL CONSERVATION DISTRICT.

John R. Roberts 7/12/91 DATE  
HOWARD SOIL CONSERVATION DISTRICT

SEDIMENT CONTROL MEASURES FOR THIS CONTRACT WILL BE IMPLEMENTED IN ACCORDANCE WITH SECTION 219 OF THE HOWARD COUNTY STANDARD SPECIFICATIONS AND AS PER ROAD CONSTRUCTION PLANS F-91-127

**DEPARTMENT OF PUBLIC WORKS**  
HOWARD COUNTY, MARYLAND

Director of Public Works: James P. ... DATE 7-9-91  
Chief, Bureau of Engineering: ... DATE 7-18-91  
Chief, Bureau of Utilities: ... DATE 7-9-91  
Chief, Land Development Division: ... DATE 7-10-91

**T.S.A. GROUP INC.**  
planning • engineering • surveying  
8480 Baltimore National Pike • Suite 418  
Ellicott City, Maryland 21043

DES: JH 7/19/91 ADD 3/4" WHC TO ANDERSON PROPERTY

DRN: JH MWM AS-BUILT 7-18-92

CHK: JME EJS DELETE 2" WATER, ADD 4" WATER, REVISE WHO'S 4/21/92

DATE: 4/11/91 EJS ADD DIST. TO BSM AND ROAD R/W 1/21/91

BY NO. EJS SHOW TOP ELEVATION, REVISE LOT 28 SERVICE 9/27/91

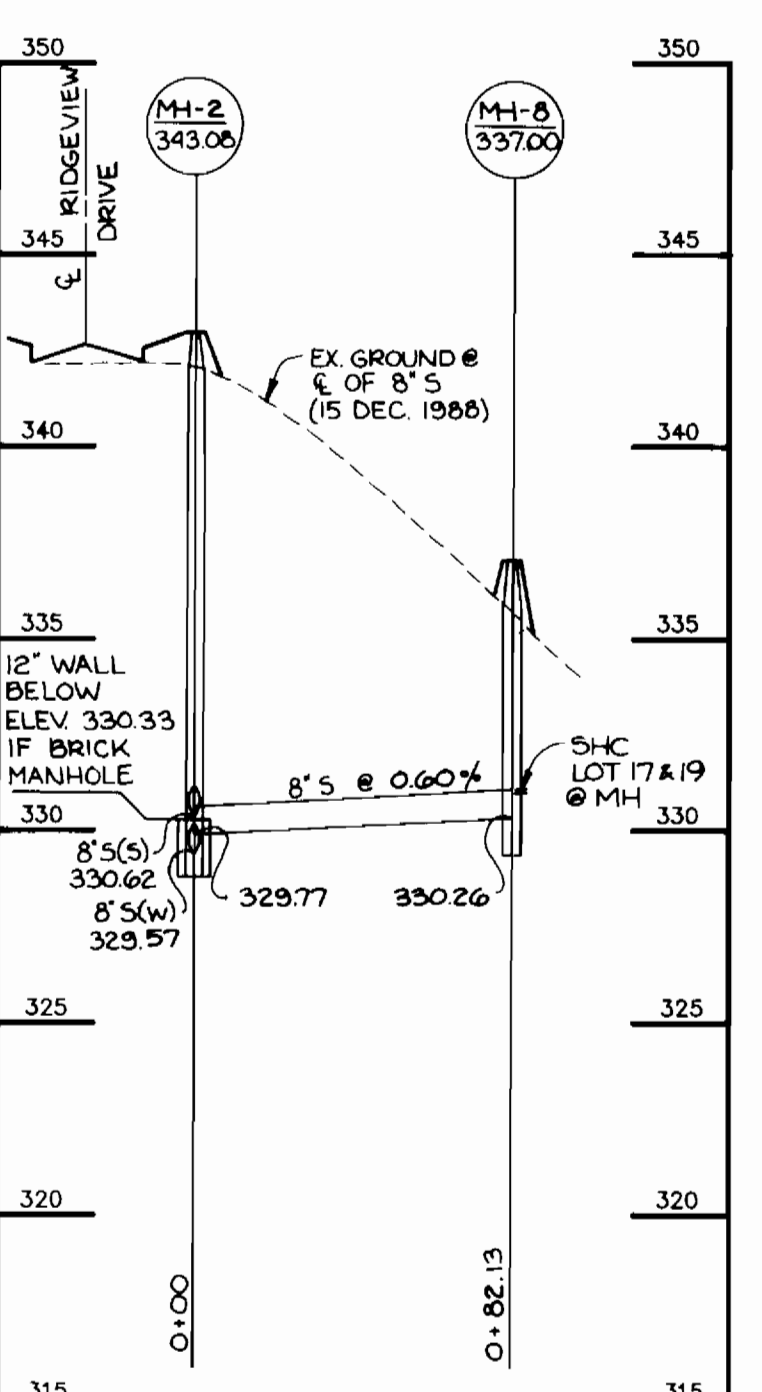
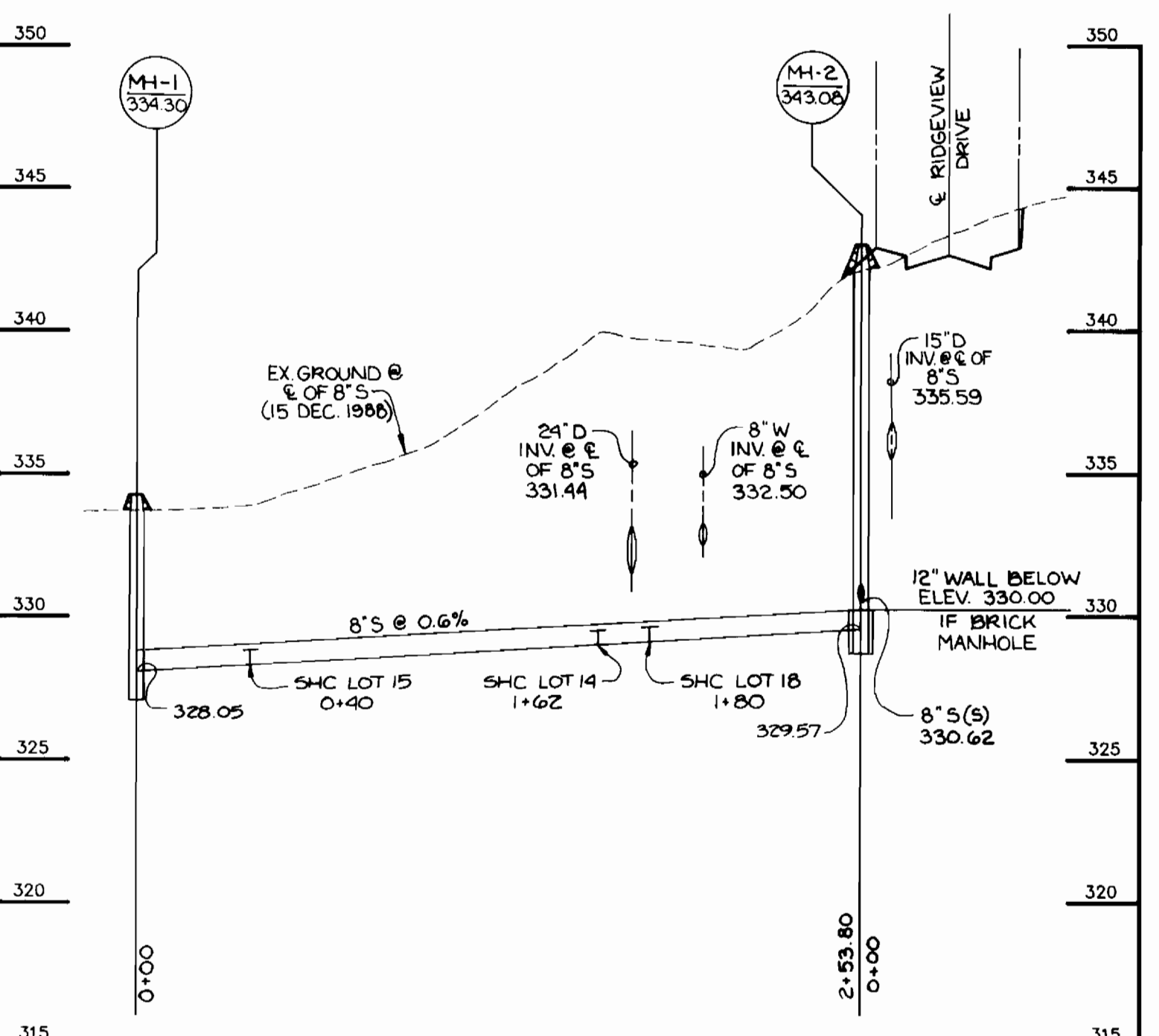
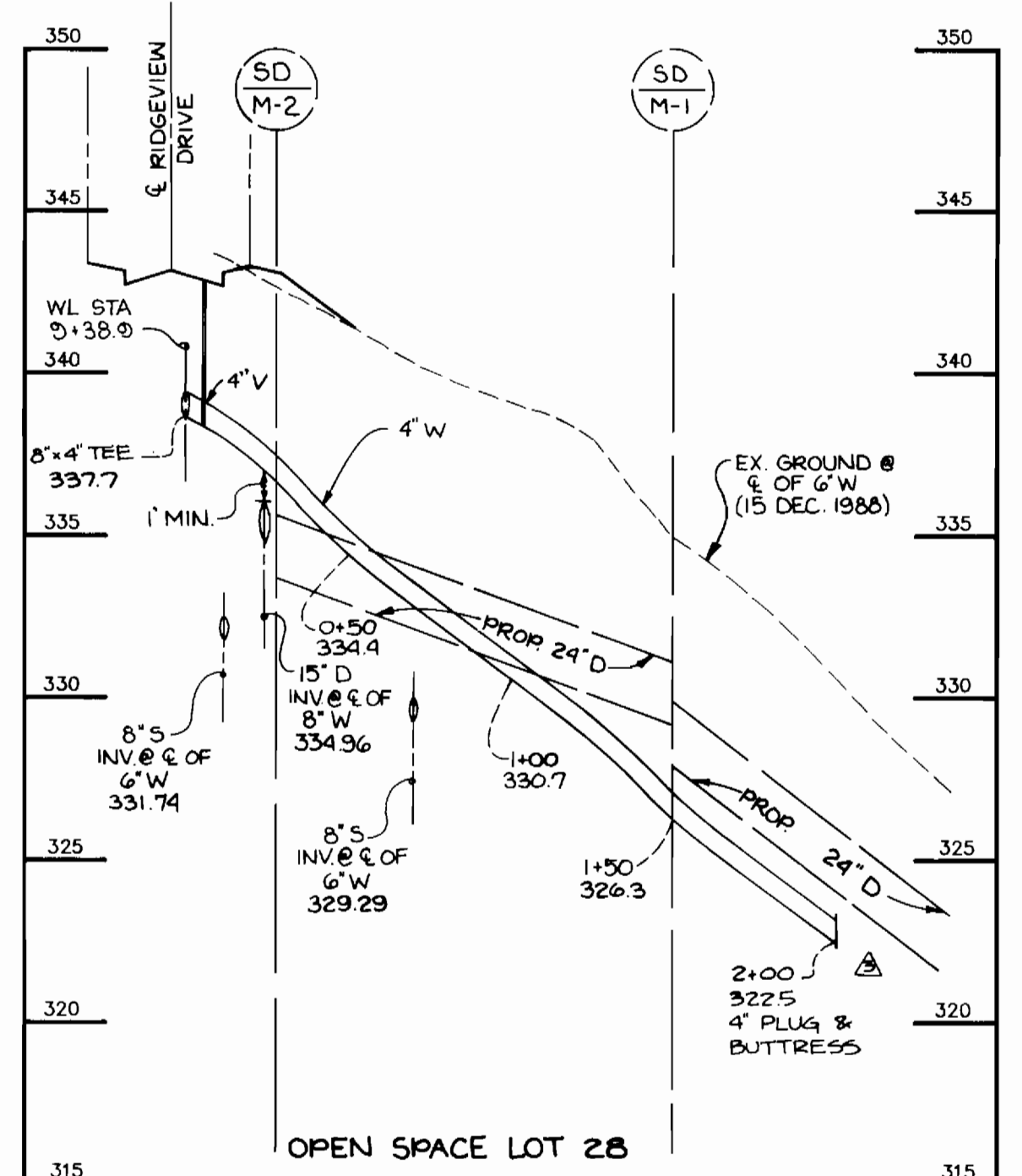
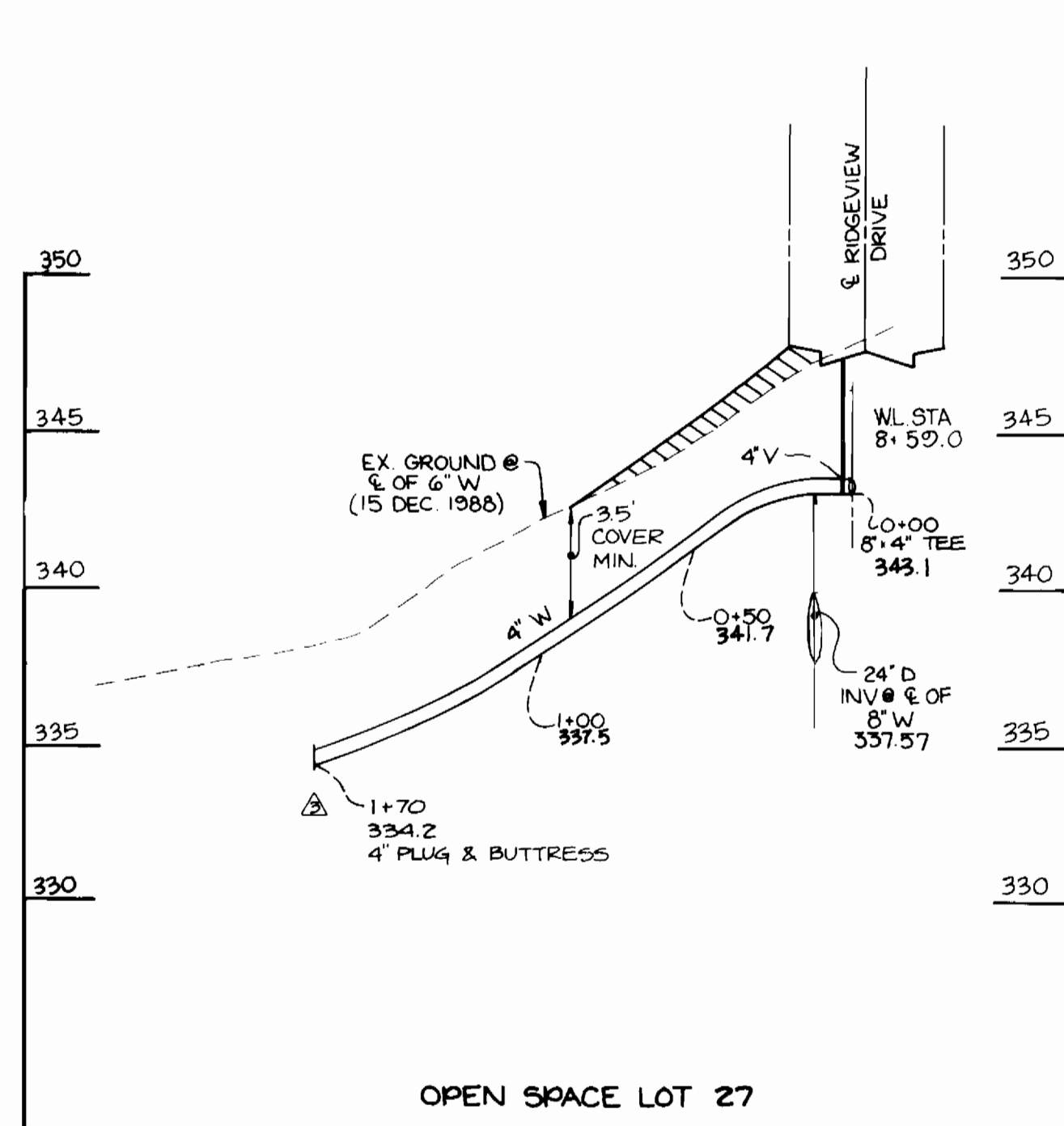
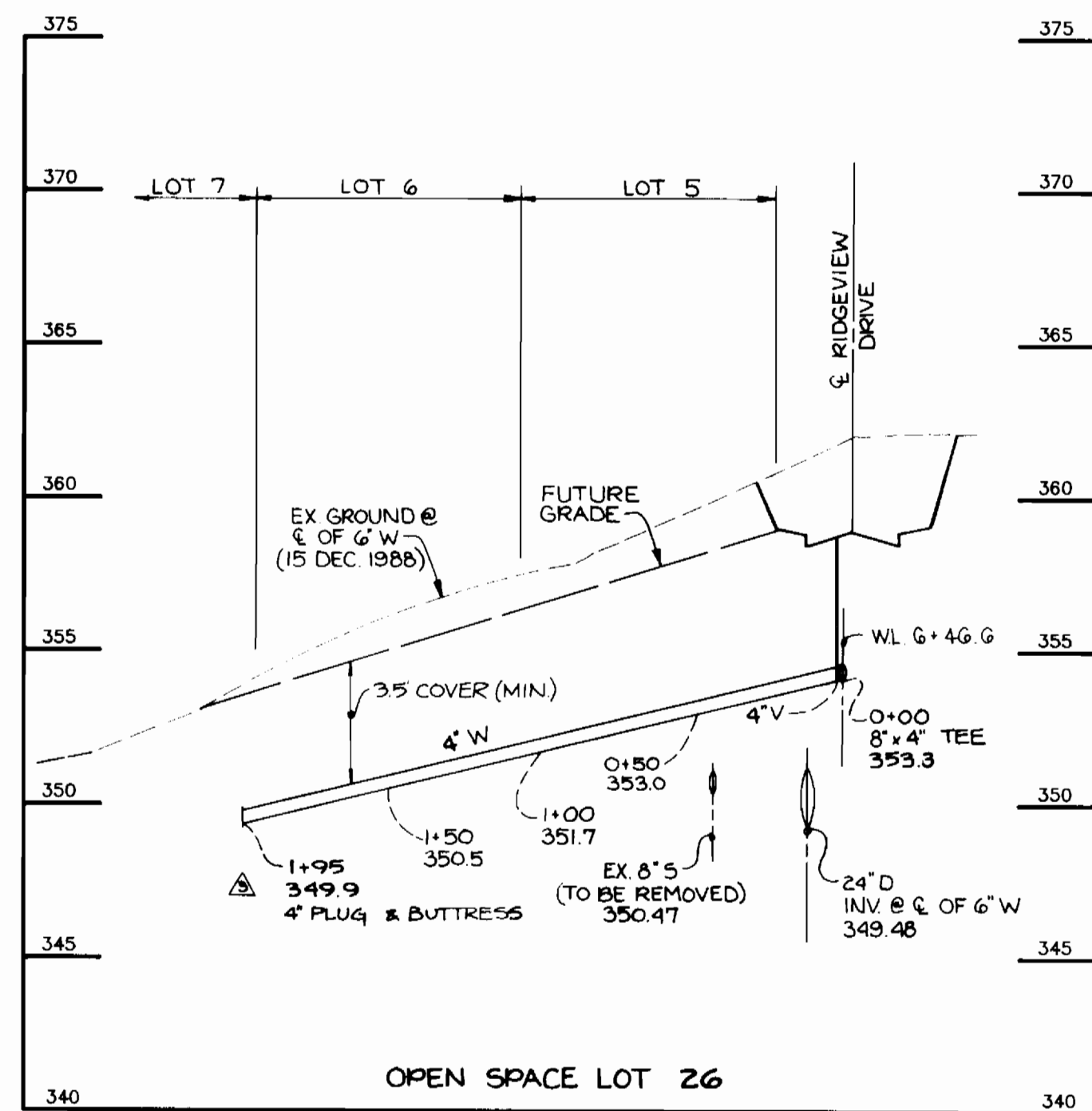
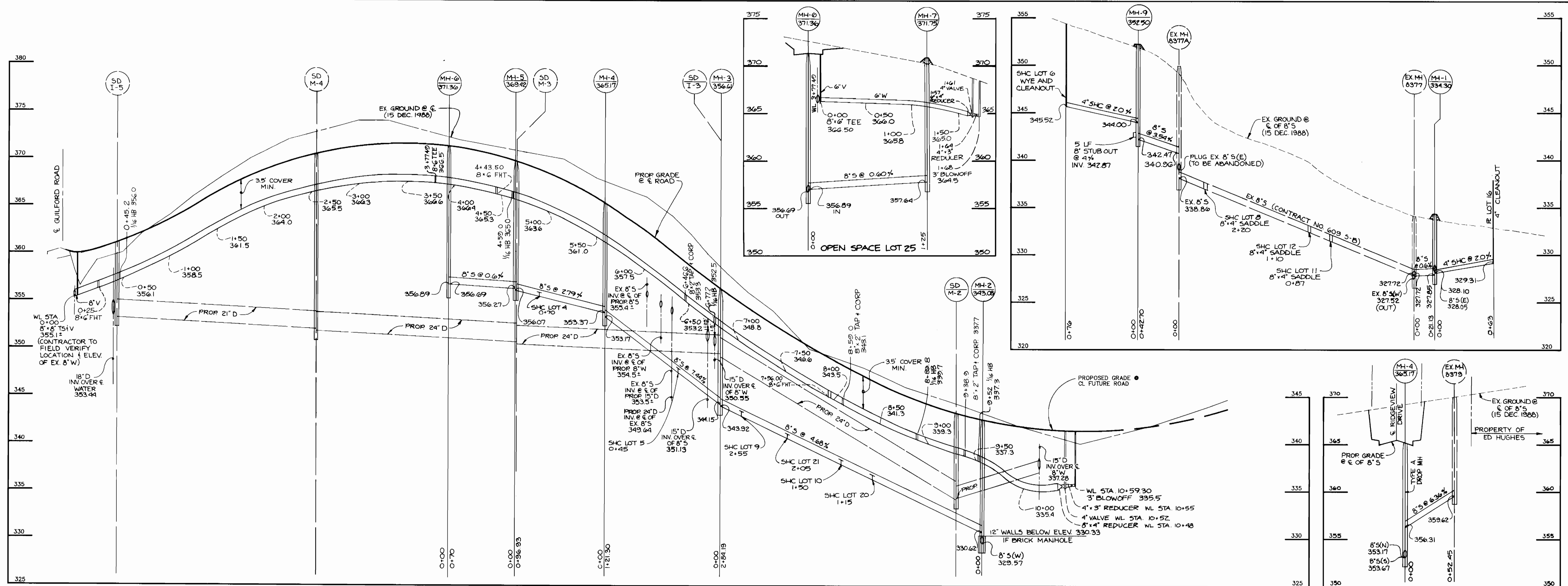
REVISIONS

**PLAN OF WATER & SEWER MAINS**

600 SCALE MAP NO. 42 BLOCK NO. 16

**OAK RIDGE**  
SECTION 1, AREA 1  
LOTS 1 THRU 31  
ELECTION DISTRICT NO. 6  
CONTRACT NO. 24-3100-D

SCALE AS SHOWN  
SHEET 1 OF 2



PROFILES SCALE: HORIZ. 1" = 50' VERT. 1" = 5'

DEPARTMENT OF PUBLIC WORKS  
HOWARD COUNTY, MARYLAND

T.S.A. GROUP INC.

planning • engineering • surveying  
8480 Baltimore National Pike • Suite 418  
Ellicott City, Maryland 21043



DES: JH			
DRN: JH/OBT			
CHK: JME	DPT	DELETE 2" WATER, ADD 4" WATER, REVISE WHCS	4/21/92
DATE: 4/11/91	EJS	SHOW TAP ELEV AND REVISE LOT 28 SERVICE	2/27/91
	BY	NO.	REVISIONS

PROFILES OF  
WATER & SEWER MAINS

600 SCALE MAP NO. 42 BLOCK NO. 16

OAK RIDGE

SECTION 1, AREA 1  
LOTS 1 THRU 22

ELECTION DISTRICT NO. 6

CONTRACT NO. 24-3100-D

SCALE

HORIZ. 1" = 50'  
VERT. 1" = 5'

SHEET  
2 OF 2

AS-BUILT