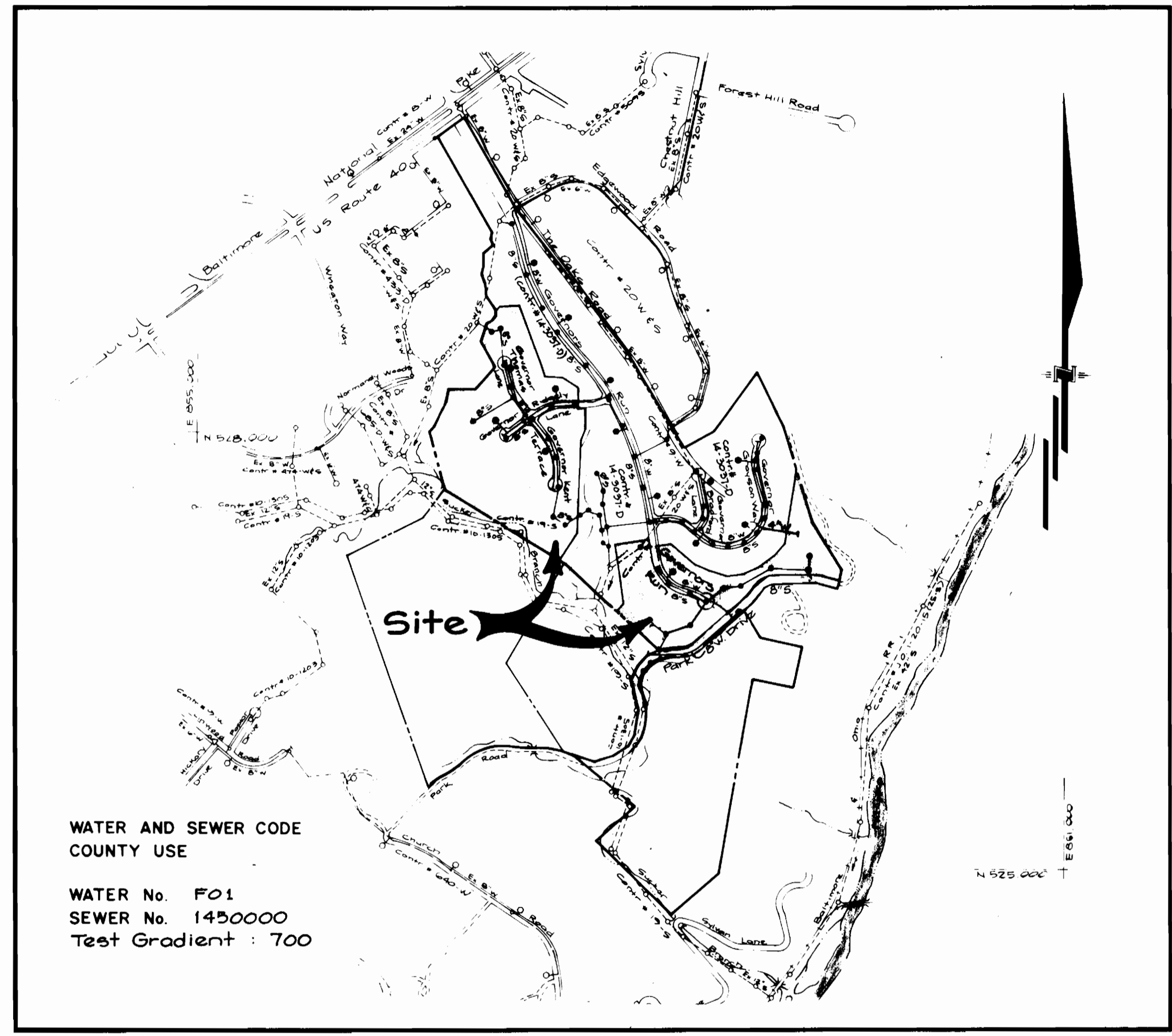


TYPE OF BUILDING	Single Family Dwelling
NUMBER OF UNITS	22
NUMBER OF SHC's	59
NUMBER OF WHC's	59
DRAINAGE AREA	Patapsco



WATER AND SEWER CODE  
COUNTY USE

WATER No. F01  
SEWER No. 1450000  
Test Gradient : 700

VICINITY MAP  
SCALE : 1" = 600'

**CONTRACT NO. 14-3067-D**

**GOVERNORS RUN**

**SECTION 2, LOTS 74 - 130**

**HOWARD COUNTY, MARYLAND**

**DEPARTMENT OF PUBLIC WORKS**

**GENERAL NOTES**

- PART I -**
- Approximate location of existing mains are shown. The contractor shall take all necessary precautions to protect existing mains and services and maintain uninterrupted supply. Any damage incurred shall be repaired immediately to the satisfaction of the Engineer at the Contractor's expense.
  - All horizontal controls are based on Maryland State Coordinates.
  - All vertical controls are based on U.S.G.S. data.
  - All pipe elevations shown are invert elevations.
  - Clear all utilities by a minimum of 6". Clear all poles by a 2'-0" minimum or tunnel as required. The owner has contacted the utility companies and has made arrangements for bracing of poles as shown on the drawings. In the event the contractor's work requires the bracing of additional poles, any cost incurred by the owner for the bracing of additional poles or damages shall be deducted from money owed the contractor. The contractor shall coordinate with the utility companies to schedule the bracing of the poles.
  - For details not shown on the drawings, and for materials and construction methods, use Howard County Design Manual, Volume IV, Standard Specifications and Detail for Construction (Latest Edition). The contractor shall have a copy of Volume IV on the job.
  - Where test pits have been made on existing utilities, they are noted by the symbol at the location of the test pit. A note or notes containing the results of the test pit or pits is included on the drawings. Existing utilities in the vicinity of the proposed work for which test pits have not been dug, shall be located by the contractor two weeks in advance of construction operations at his own expense.
  - Contractor shall notify the following utility companies or agencies at least five working days before starting work shown on these plans:
- |                                                        |                |
|--------------------------------------------------------|----------------|
| State Highway Administration                           | 531-5533       |
| BG&E Co. Contractor Services                           | 850-4620       |
| BG&E Co. Under Ground Damage Control                   | 787-9068       |
| Miss Utility                                           | 1-800-257-7777 |
| Colonial Pipeline Co.                                  | 795-1390       |
| Howard County Dept. of Public Works, Bur. of Utilities | 313-4900       |
- Trees and shrubs are to be protected from damage to maximum extent. Trees and shrubs located within the construction strip are not to be removed or damaged by the contractor.
  - Contractor shall remove trees, stumps and roots along line of excavation. Payment for such removal shall be included in the unit price bid for construction of the main.
- PART II - WATER**
- All water mains to be D.I.P. Class 52 unless otherwise noted.
  - Tops of all water mains to have a minimum of 3-1/2' cover unless otherwise noted.
  - Valves adjacent to tees shall be strapped to tees.
  - All fittings shall be buttressed or anchored with concrete in accordance with the Standard Details unless otherwise provided for on the drawings.
  - Fire hydrants shall be set to the bury line elevations shown on the drawings. All fire hydrants shall be strapped and buttressed with concrete in accordance with Standard Details. Soil around the fire hydrant shall be compacted in accordance with Section 1000 and 1005 of the Standard Specifications.
  - The contractor shall not operate any water main valves on the existing water system.
  - All water house connections shall be for inside meter setting unless otherwise noted on plans or in specifications.
- PART III - SEWER**
- All sewer mains shall be DIP, RCP, VCPX, CSPX, RCCP and P.V.C. unless otherwise noted.
  - The contractor shall provide a joint in all sewer mains within 2'-0" of exterior manhole wall.
  - All manholes shall be 4'-0" inside diameter unless otherwise noted.
  - Force mains shall be D.I.P. only.
  - Manholes shown with 12" and 16" walls are for brick manholes only.
  - Manholes designated W.T. in plan and profile shall have watertight frame and covers, Standard Detail G5.52. Where watertight manhole frame and cover is used, set top of frame 1'-6" above finished grade unless otherwise noted on the drawings.
  - House(s) with the symbol "C.N.S." indicates that the cellar cannot be served.

ITEMS	QUANTITIES ESTIMATED	AS-BUILT		
		QUANTITIES	TYPE	MANUFACTURER/SUPPLIER
8" Sewer	3,224 LF	3,400 LF		
8" Sewer (D.I.P.)	1,324 LF	1,324 LF		
4" SHC	1,210 LF	1,210 LF		
4" Manholes	34 EA	37 EA		
6" Water	2,520 LF	2,430 LF		
4" Water	530 LF	301 LF		
3/4" WHC	1,124 LF	1,070 LF		
1" WHC	417 LF	410 LF		
1" Meter Vault	2 EA	2 EA		
Fire Hydrant 4" V.	7 EA	7 EA		
2" Blowoff + V.	1 EA	1 EA		
8" Valve	5 EA	5 EA		
8" x 6" Reducer	4 EA	3 EA		
4" x 2" Reducer	1 EA	1 EA		
1/2" V.B.	1 EA	1 EA		
1/4" H.B.	2 EA	2 EA		
Type "B" Drop Conn.	5 EA	5 EA		

Sediment Control Measures will be implemented in accordance with Section 219 of the Specifications & with Road Construction Plan F20-114; Drawings 5-8118 Sediment & Erosion Control

REVIEWED FOR HOWARD SOIL CONSERVATION DISTRICT AND MEETS TECHNICAL REQUIREMENT.

*Patricia Cooper/JM* 7/24/94  
SIGNATURE DATE

U.S. SOIL CONSERVATION SERVICE

THIS DEVELOPMENT PLAN IS APPROVED FOR SOIL EROSION AND SEDIMENT CONTROL BY THE HOWARD SOIL CONSERVATION DISTRICT

APPROVED

*John A. Roberts* 7/24/94  
HOWARD S.C.D. DATE

DEPARTMENT OF PUBLIC WORKS  
HOWARD COUNTY, MARYLAND

*Richard J. ...* 8/2/94  
DIRECTOR OF PUBLIC WORKS DATE

*Robert ...* 8/2/94  
CHIEF, BUREAU OF ENGINEERING DATE

*Michael ...* 7/20/94  
CHIEF, BUREAU OF UTILITIES DATE

*...* 8/1/94  
CHIEF, LAND DEVELOPMENT DIV. DATE

**GW** GUTSCHICK LITTLE & WEBER, P.A.  
ENGINEERS, PLANNERS, SURVEYORS

3908 NATIONAL DRIVE SUITE 200 WARTONSVILLE OFFICE PARK  
WARTONSVILLE, MD 20856  
(301) 421-4024

DES. G.A.H.				
DRN. G.A.H.				
CHK. C.K.G.	MCF	2	REV. QUANTITIES	1/9/95
DATE: July 1994	KJ	Δ	REVISE QUANTITIES BOX	10/1/94
BY NO.			REVISION	DATE

Title Sheet

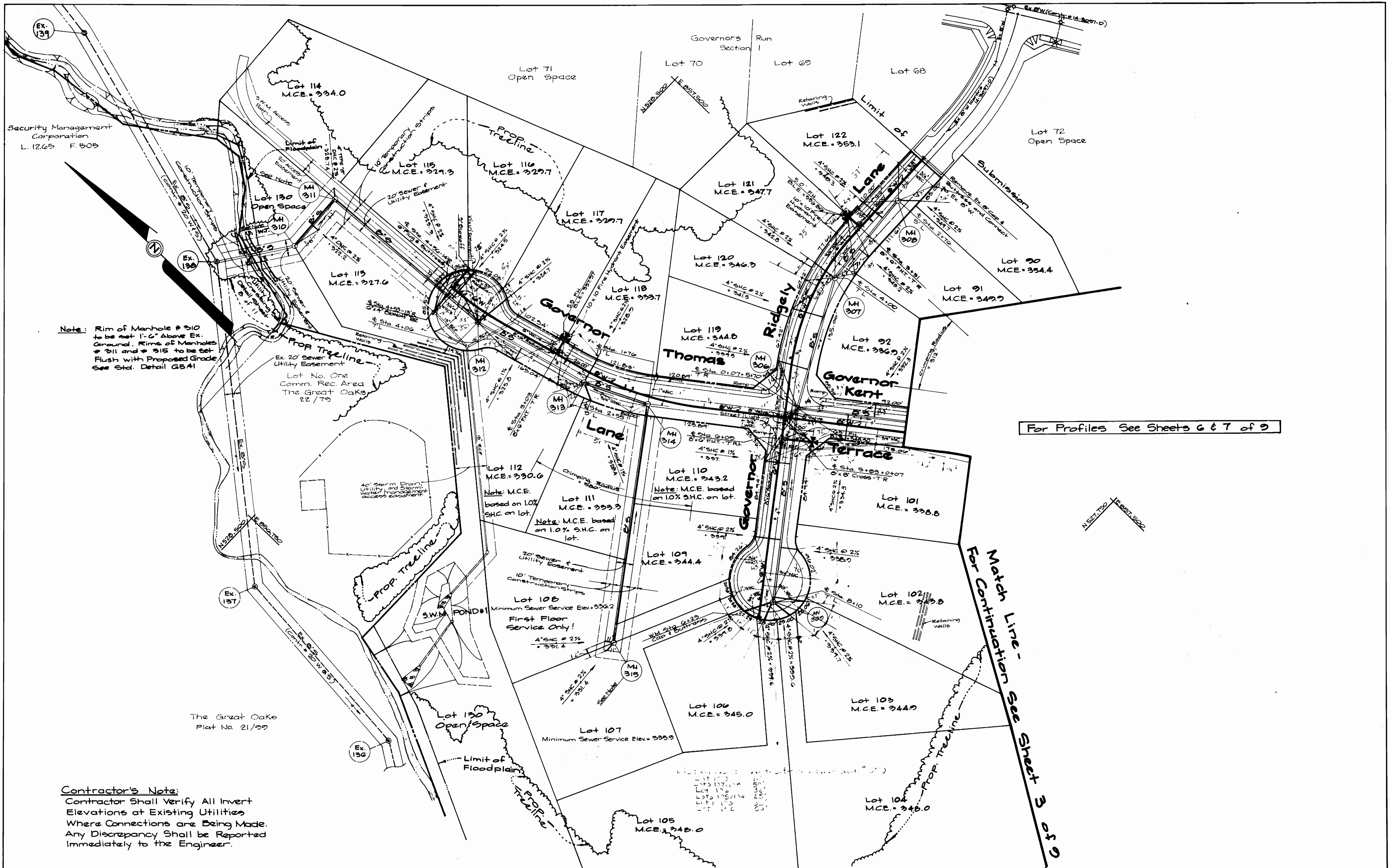
600 SCALE MAP NO. 12/25 BLOCK NO. 12120/112

**Governors Run**  
Section 2 Lots 74-130  
2nd Election District  
Howard County, Maryland  
Contract No. 14-3067-D

SCALE AS SHOWN

SHEET 1 OF 2

AS-BUILT 1/4/96



Note: Rim of Manhole # 310 to be set 1'-6" Above Ex. Ground. Rims of Manholes # 311 and # 315 to be set Flush with Proposed Grade. See Std. Detail G541

For Profiles See Sheets G & T of 9

Match Line -  
For Continuation See Sheet 3 of 9

**Contractor's Note:**  
Contractor Shall Verify All Invert Elevations at Existing Utilities Where Connections are Being Made. Any Discrepancy Shall be Reported Immediately to the Engineer.

DEPARTMENT OF PUBLIC WORKS  
HOWARD COUNTY, MARYLAND

*Richard J. ...* 8/2/94  
DIRECTOR OF PUBLIC WORKS

*Michael H. ...* 7/24/94  
CHIEF, BUREAU OF UTILITIES

*Richard J. ...* 8/2/94  
CHIEF, BUREAU OF ENGINEERING

*Michael H. ...* 8/14/94  
CHIEF, LAND DEVELOPMENT DIV.

**GW** GUTSCHICK LITTLE & WEBER, P.A.  
ENGINEERS, PLANNERS, SURVEYORS

3909 NATIONAL DRIVE, SUITE 250, BIRTONSVILLE OFFICE PARK  
BIRTONSVILLE, MD. 20898  
(301) 421-4024



DES: G.A.H.					
DRN: G.A.H.					
CHK: C.K.A.	MCP	2	REMOVE LOT FLOOR NOTE ON LOT 107		1/3/95
	MJK	1	ADD MH # 300, CHANGE LOT 113 TO DMC AND LOT 114 TO TYPE 'B' S.H.C.		10/1/94
DATE: July 1994	BY	NO.	REVISION	DATE	

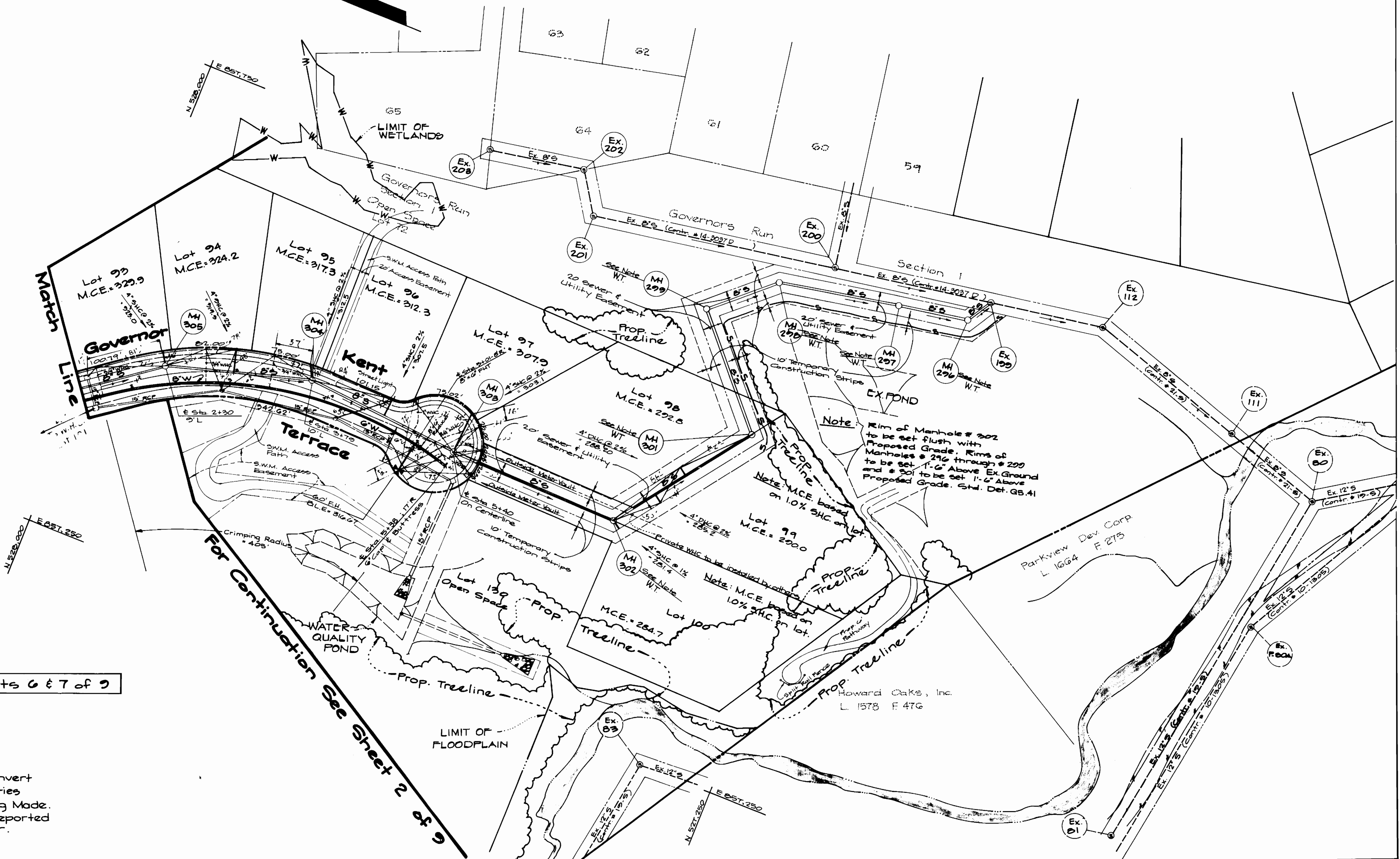
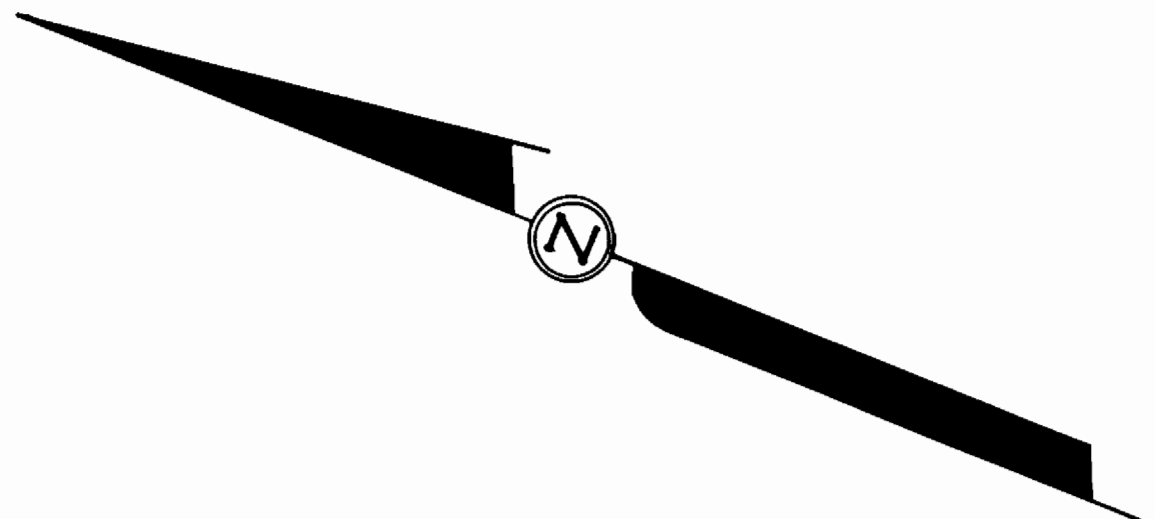
Water & Sewer Plan  
Scale: 1" = 50'

600' SCALE MAP NO. 16/25 BLOCK NO. 12122/132

**Governors Run**  
Section 2 Lots 74-130  
2nd Election District  
Howard County Maryland  
Contract No: 14-3067-D

SCALE AS SHOWN  
SHEET 2 OF 9

AS-BUILT 1/14/96



For Profiles See Sheets 6 & 7 of 9

For Continuation See Sheet 2 of 9

**Contractor's Note:**  
 Contractor Shall Verify All Invert Elevations at Existing Utilities Where Connections are Being Made. Any Discrepancy Shall be Reported Immediately to the Engineer.

DEPARTMENT OF PUBLIC WORKS  
 HOWARD COUNTY, MARYLAND

*Paul J. Ryan* 8/2/22  
 DIRECTOR OF PUBLIC WORKS

*Michael J. Ryan* 7/20/24  
 CHIEF, BUREAU OF UTILITIES

*Paul J. Ryan* 8/2/24  
 CHIEF, BUREAU OF ENGINEERING

*Michael J. Ryan* 8/2/24  
 CHIEF, LAND DEVELOPMENT DIV.

**G.W. GUTSCHICK LITTLE & WEBER, P.A.**  
 ENGINEERS, PLANNERS, SURVEYORS

3909 NATIONAL DRIVE SUITE 250 BURTONSVILLE OFFICE PARK  
 BURTONSVILLE, MD. 20886  
 (301) 421-4024

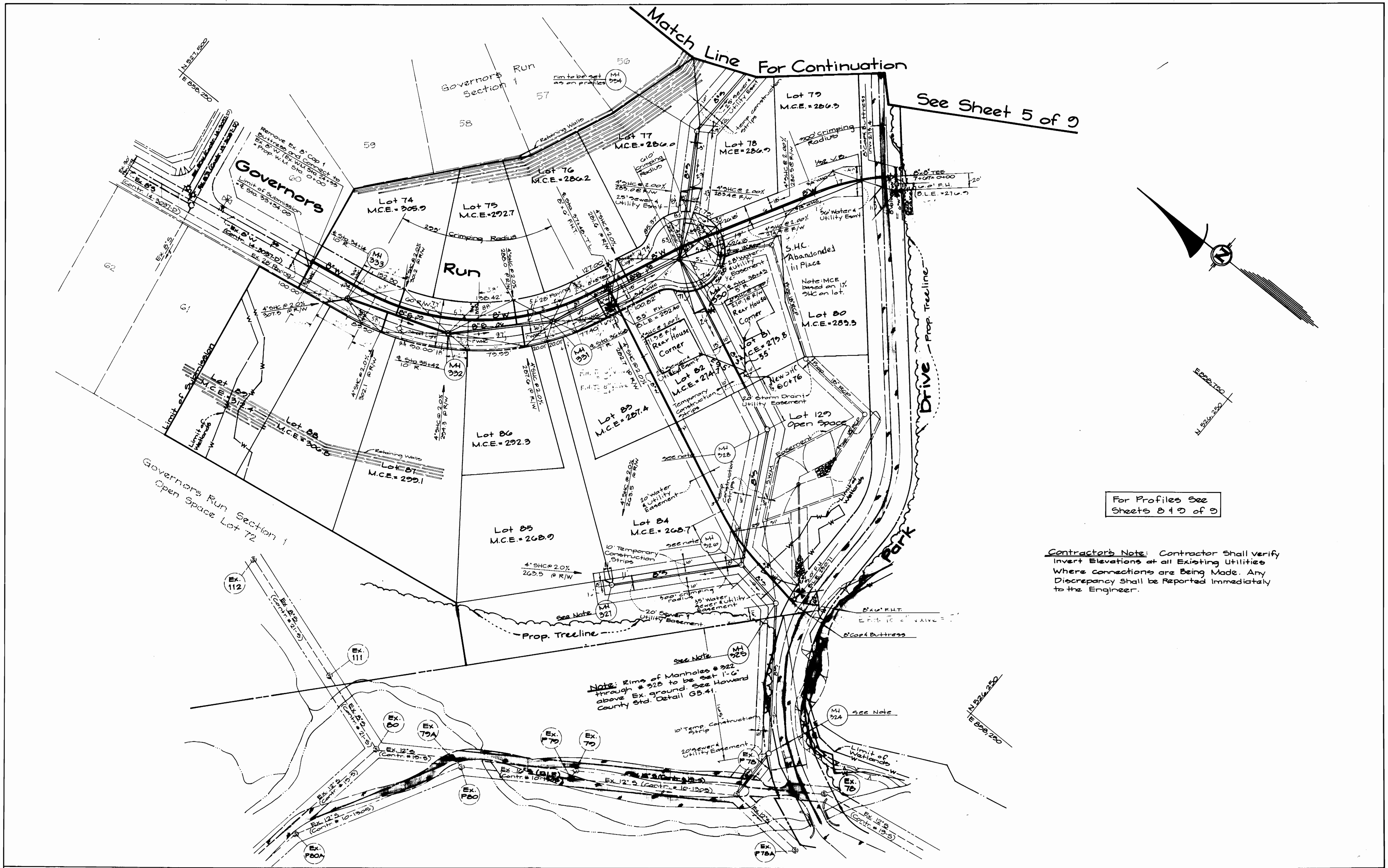
DES: G.A.H.					
DRN: G.A.H.					
CHK: C.K.G.					
DATE: July 1994	BY: NO.	REVISION	DATE	600' SCALE MAP NO. 10/25	BLOCK NO. 10120/112

**Water & Sewer Plan**  
 Scale: 1" = 50'

**Governors Run**  
 Section 2 Lots 74-130  
 2nd Election District  
 Howard County Maryland  
 Contract No: 14-3067-D

SCALE AS SHOWN  
 SHEET 2 OF 2

A3-BUILT 1/4/96



See Sheet 5 of 9

For Profiles See  
Sheets 8 & 9 of 9

**Contractor's Note:** Contractor Shall verify Invert Elevations at all Existing Utilities Where connections are Being Made. Any Discrepancy Shall be Reported Immediately to the Engineer.

**Note:** Rims of Manholes # 322 through # 328 to be set 1' C. above Ex. ground. See Howard County Std. Detail G3.41.

DEPARTMENT OF PUBLIC WORKS  
HOWARD COUNTY, MARYLAND

*Robert Seaman* 8/2/24  
DIRECTOR OF PUBLIC WORKS DATE

*Michael A. K... 7/20/24*  
CHIEF, BUREAU OF UTILITIES DATE

*Robert Seaman* 8/2/24  
CHIEF, BUREAU OF ENGINEERING DATE

*Michael A. K... 8/1/24*  
CHIEF, LAND DEVELOPMENT DIV. DATE

**GW GUTSCHICK LITTLE & WEBER, P.A.**  
ENGINEERS, PLANNERS, SURVEYORS

3908 NATIONAL DRIVE SUITE 250 BURTONTVILLE OFFICE PARK  
BURTONTVILLE, MD 20868  
(301) 421-4024

DES: G.A.H.	
DRN: G.A.H.	
CHK: C.K.G.	
MCF	eliminate water along Park Drive & run between 10+9.02, 10+9.04 & 10+9.12; re-align sewer from MH 324; Ex. P. 70; 1/21/15
MCF 2	relocate sewer run 325 thru 323 & 324 thru 327
DATE: July 1994	BY NO. REVISION

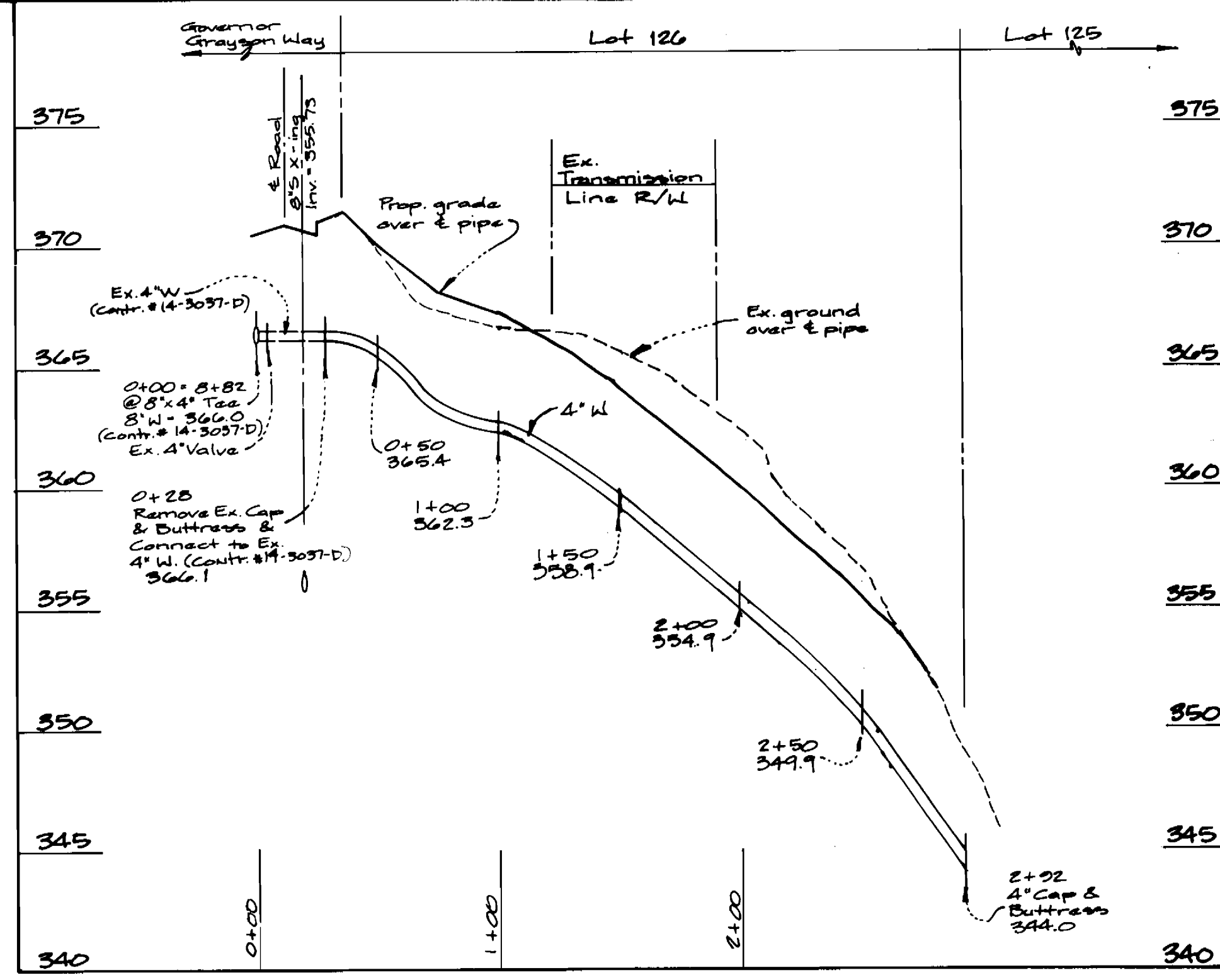
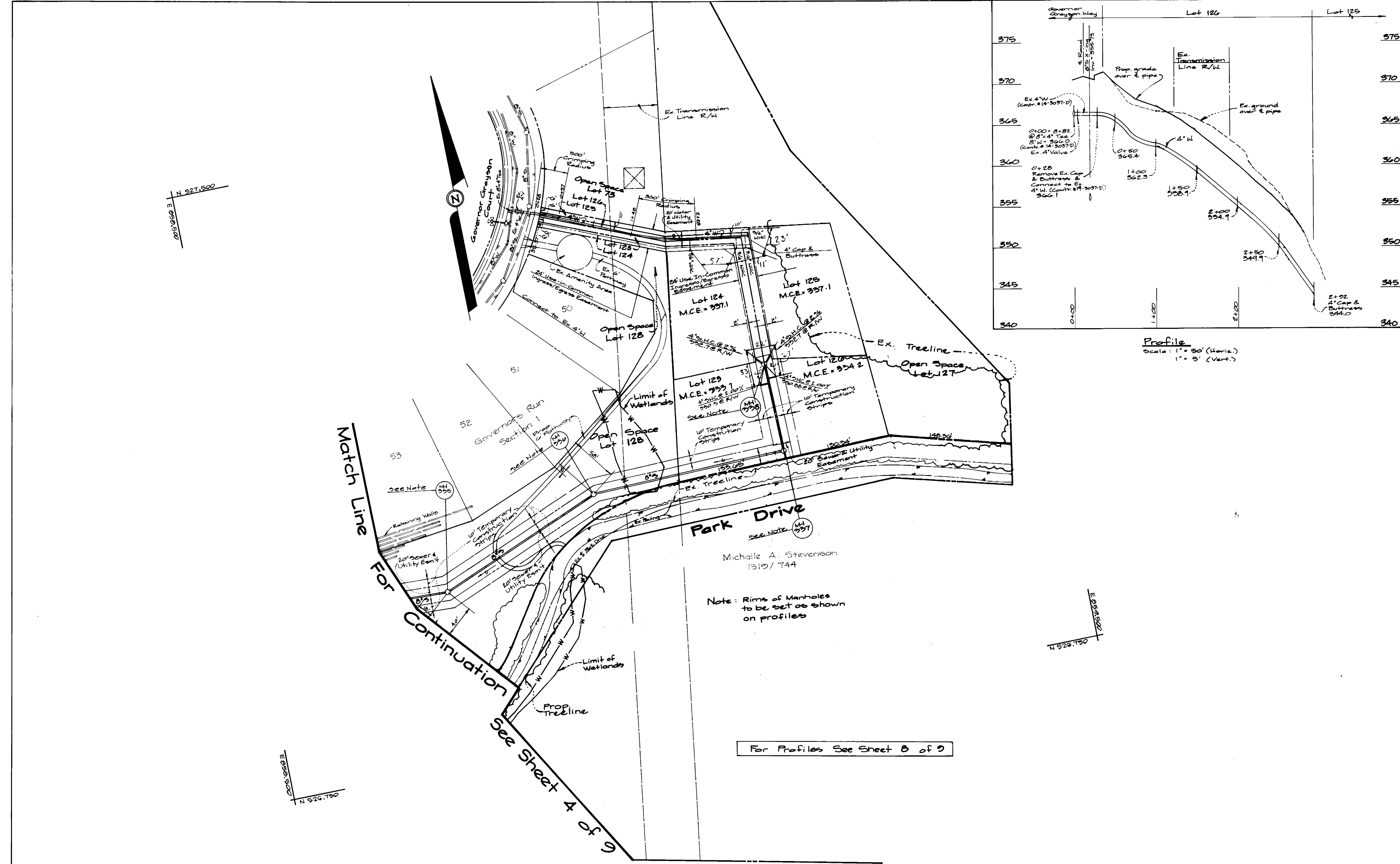
Water & Sewer Plan  
Scale: 1" = 50'

600' SCALE MAP NO. 10/25 BLOCK NO. 10420/142

**Governors Run**  
Section 2 Lots 74-130  
2nd Election District  
Howard County, Maryland  
Contract No. 14-3067-D

SCALE AS SHOWN  
SHEET 4 OF 2

AS-BUILT 1/7/22



**Profile**  
Scale: 1" = 50' (Horiz.)  
1" = 5' (Vert.)

Michelle A. Stevenson  
10/10/744

Note: Rims of Manholes to be set as shown on profiles

For Profiles See Sheet 8 of 9

DEPARTMENT OF PUBLIC WORKS  
HOWARD COUNTY, MARYLAND

*Michael A. Stevenson* 8/10/94  
DIRECTOR OF PUBLIC WORKS, ACTING DATE

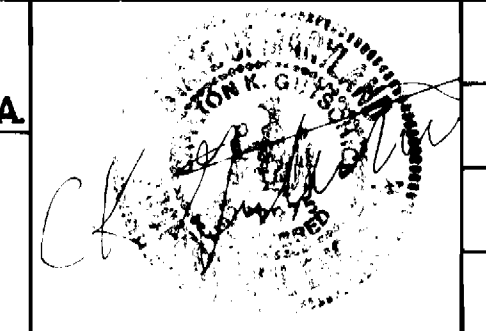
*Richard J. ...* 8/10/94  
CHIEF, BUREAU OF ENGINEERING DATE

*Michael A. Stevenson* 7-26-94  
CHIEF, BUREAU OF UTILITIES RMB DATE

*Richard J. ...* 8/10/94  
CHIEF, LAND DEVELOPMENT DIV. DATE

**GW GUTSCHICK LITTLE & WEBER, P.A.**  
ENGINEERS, PLANNERS, SURVEYORS

3909 NATIONAL DRIVE SUITE 250 BURTONTVILLE OFFICE PARK  
BURTONTVILLE, MD 20888  
(301) 421-4024



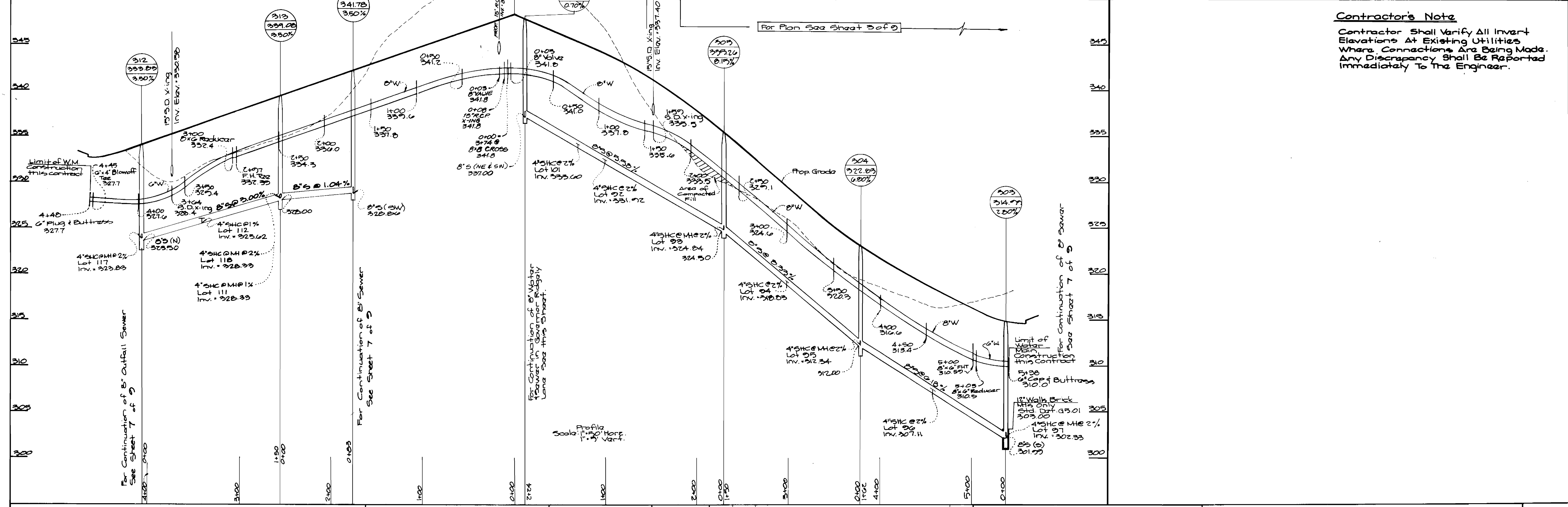
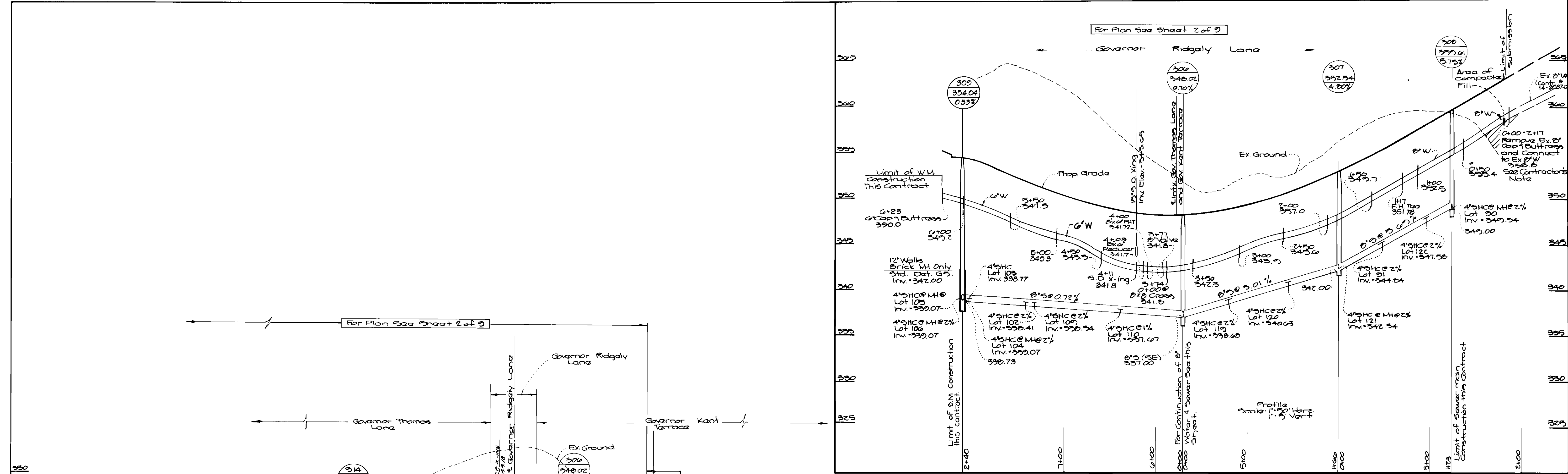
DES: G.A.H.					
DRN: G.A.H.					
CHK: C.K.G.	MCF 1	REV. 4" WATER PROFILE			8/21/94
	MCF 2	RELEASED SEWER RUN 325 THRU 325.4 334 THRU 337			10/10/94
	MCF 3	REVERSE LOT NO'S 123 & 124			10/10/94
DATE: July 1994	BY: NO.	REVISION	DATE	600' SCALE MAP NO. 18/25	BLOCK NO. 12 & 20/1 & 2

Water & Sewer Plan  
Scale: 1" = 50'

**Governors Run**  
Section 2 Lots 74-150  
2nd Election District  
Howard County Maryland  
Contract No: 14-2007-D

SCALE AS SHOWN  
SHEET 5 OF 9

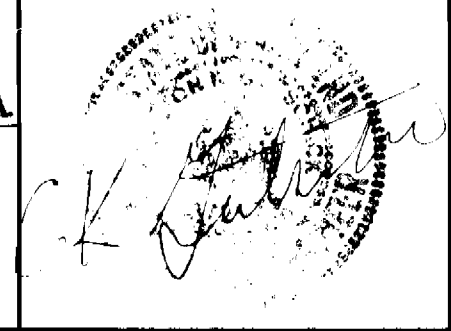
45-BUILT 1/4/95



**Contractor's Note**  
 Contractor Shall Verify All Invert Elevations At Existing Utilities Where Connections Are Being Made. Any Discrepancy Shall Be Reported Immediately To The Engineer.

DEPARTMENT OF PUBLIC WORKS  
 HOWARD COUNTY, MARYLAND  
 Director of Public Works: *Paul J. Ryan* 8/2/94  
 Chief, Bureau of Engineering: *Paul J. Ryan* 8/2/94  
 Chief, Bureau of Utilities: *N. S. Adams* 7/26/94  
 Chief, Land Development Div.: *W. J. Dorman* 8/1/94

**G.W. GUTSCHICK LITTLE & WEBER, P.A.**  
 ENGINEERS, PLANNERS, SURVEYORS  
 3909 NATIONAL DRIVE SUITE 250 BURTNSVILLE OFFICE PARK  
 BURTNSVILLE, MD 20886  
 (301) 421-4024

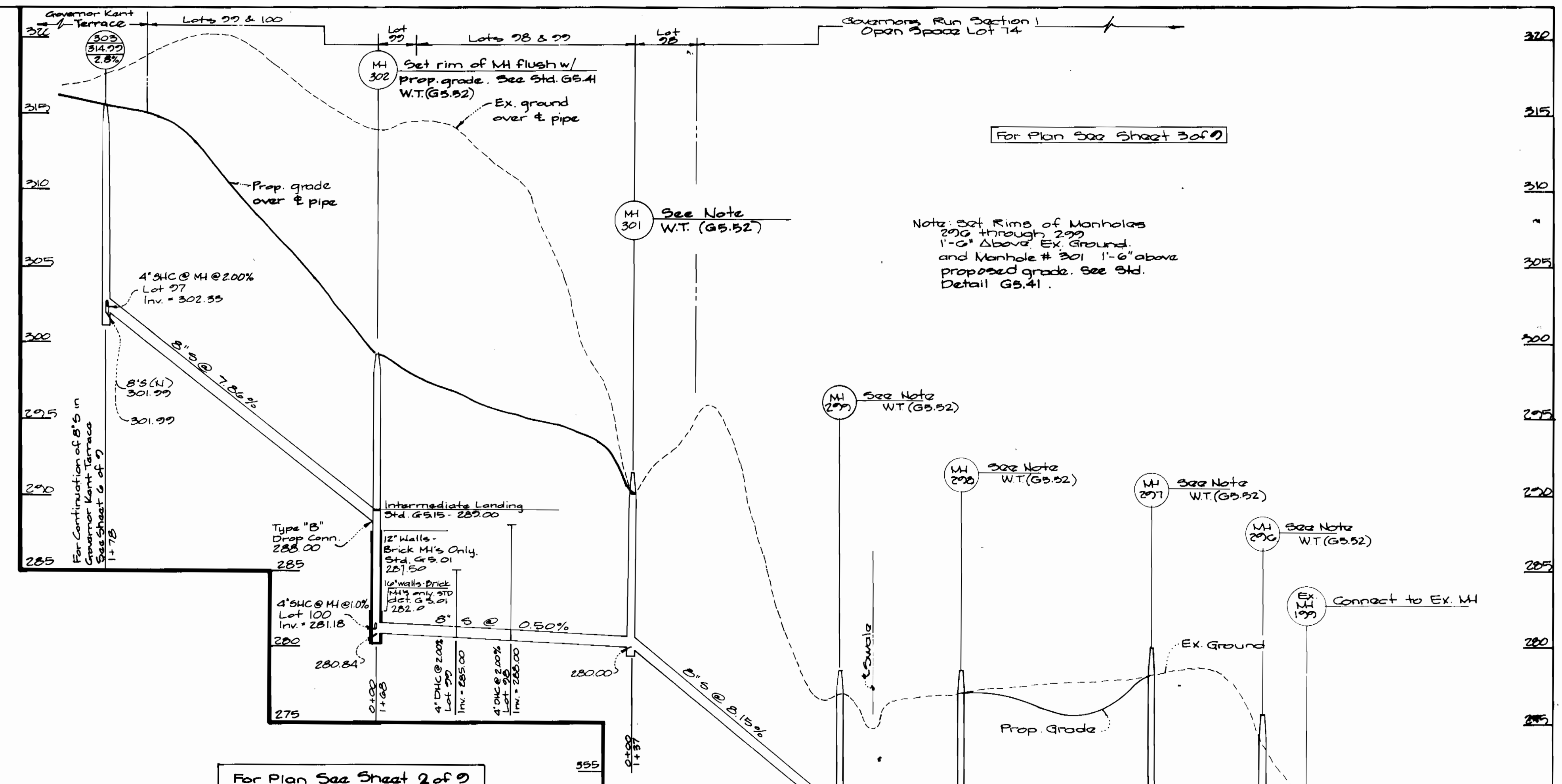
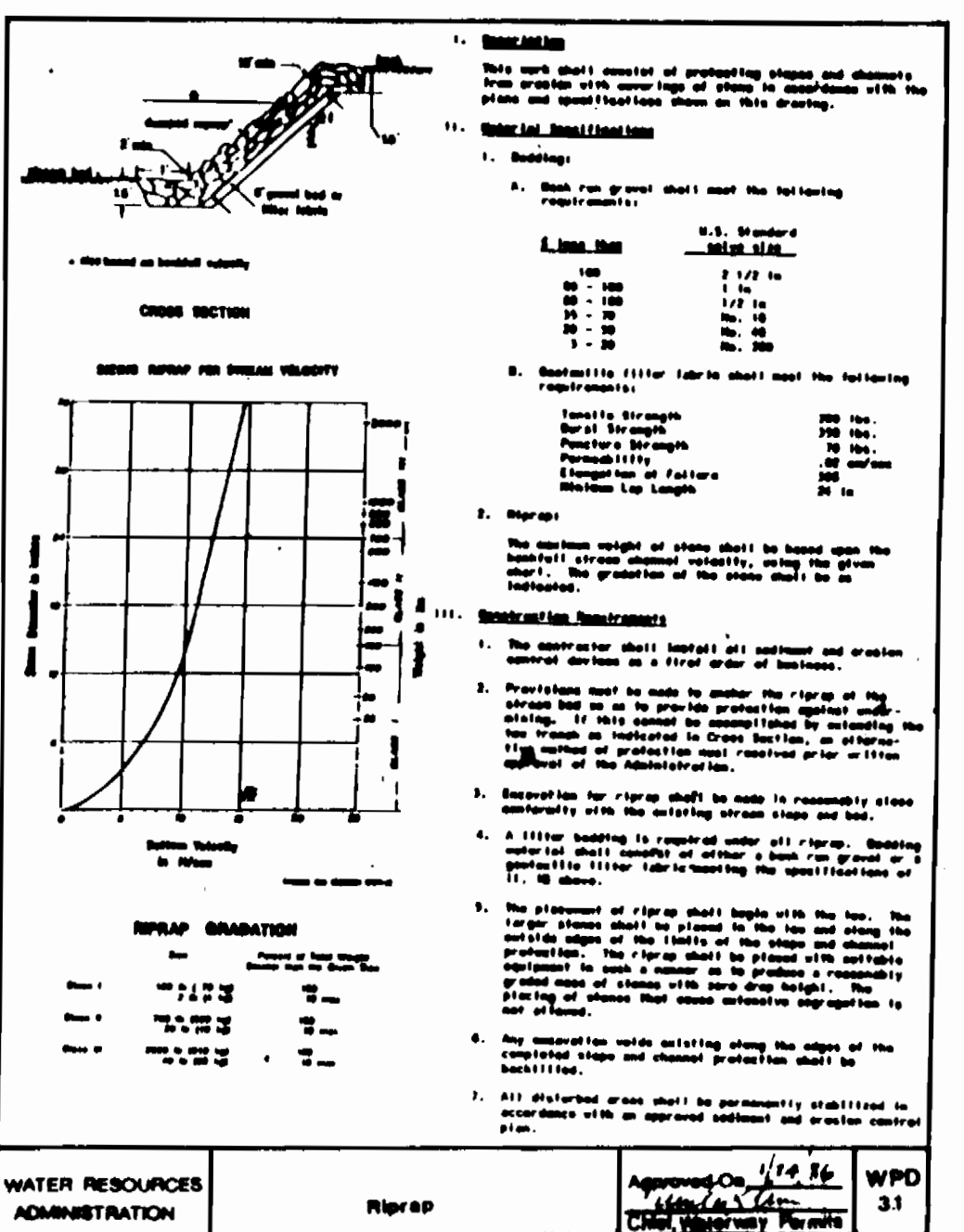
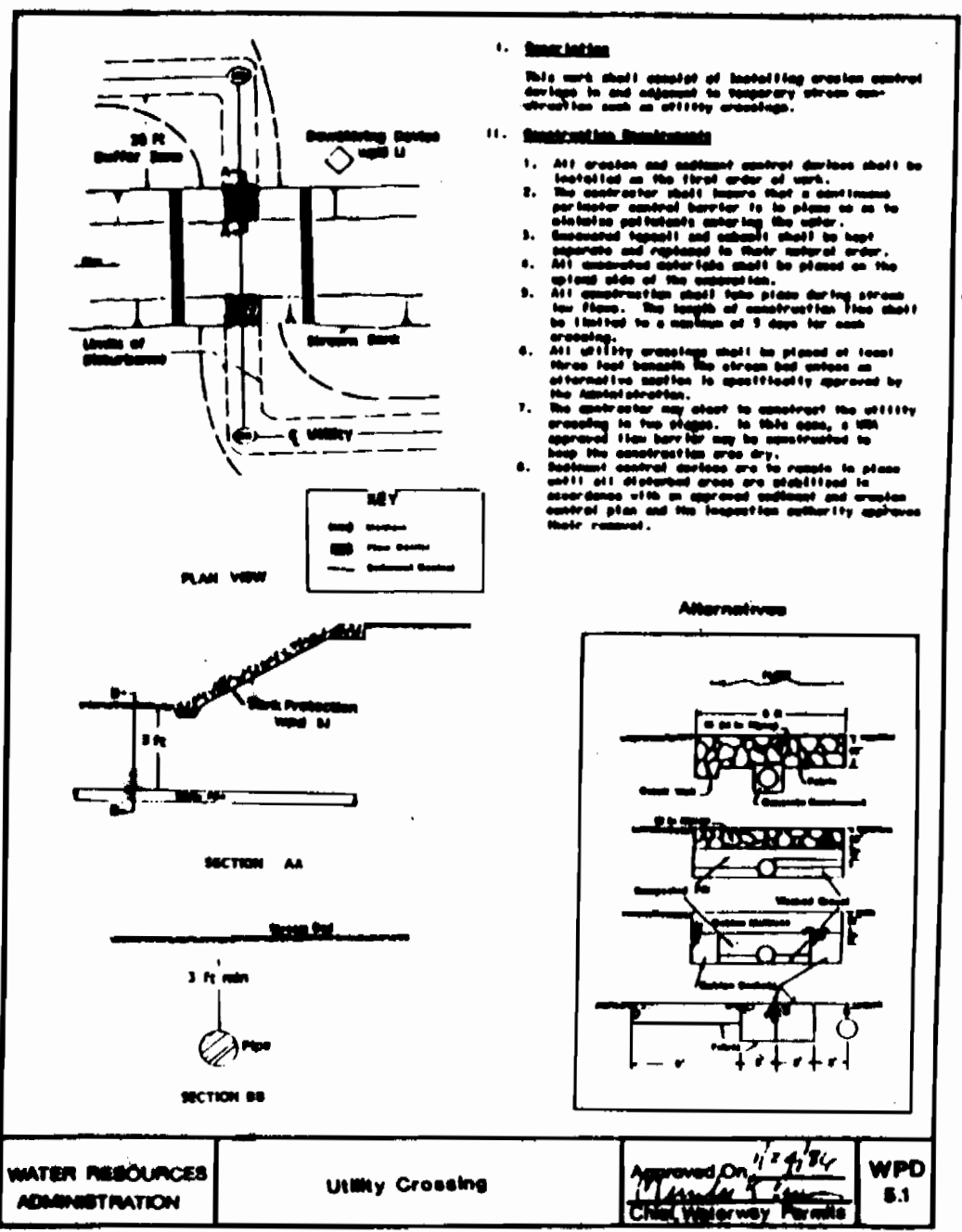


DES: GAH					
DRN: MCF					
CHK: CKG					
DATE: July 1994	BY: [Signature]	NO.:	ADD 15' R.C.P. X-ING & 90' RIDGELY L.N.	DATE: 10/1/94	

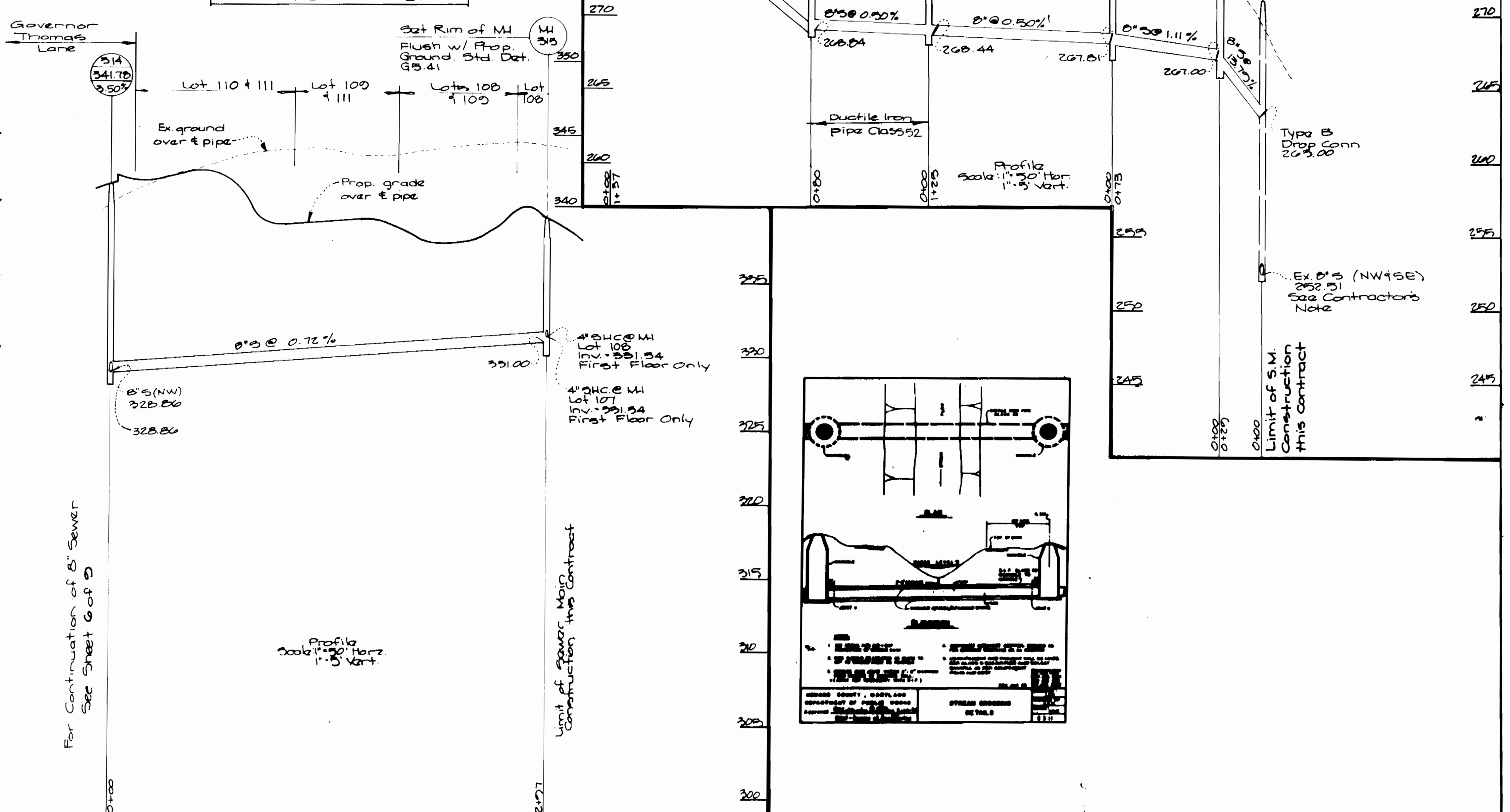
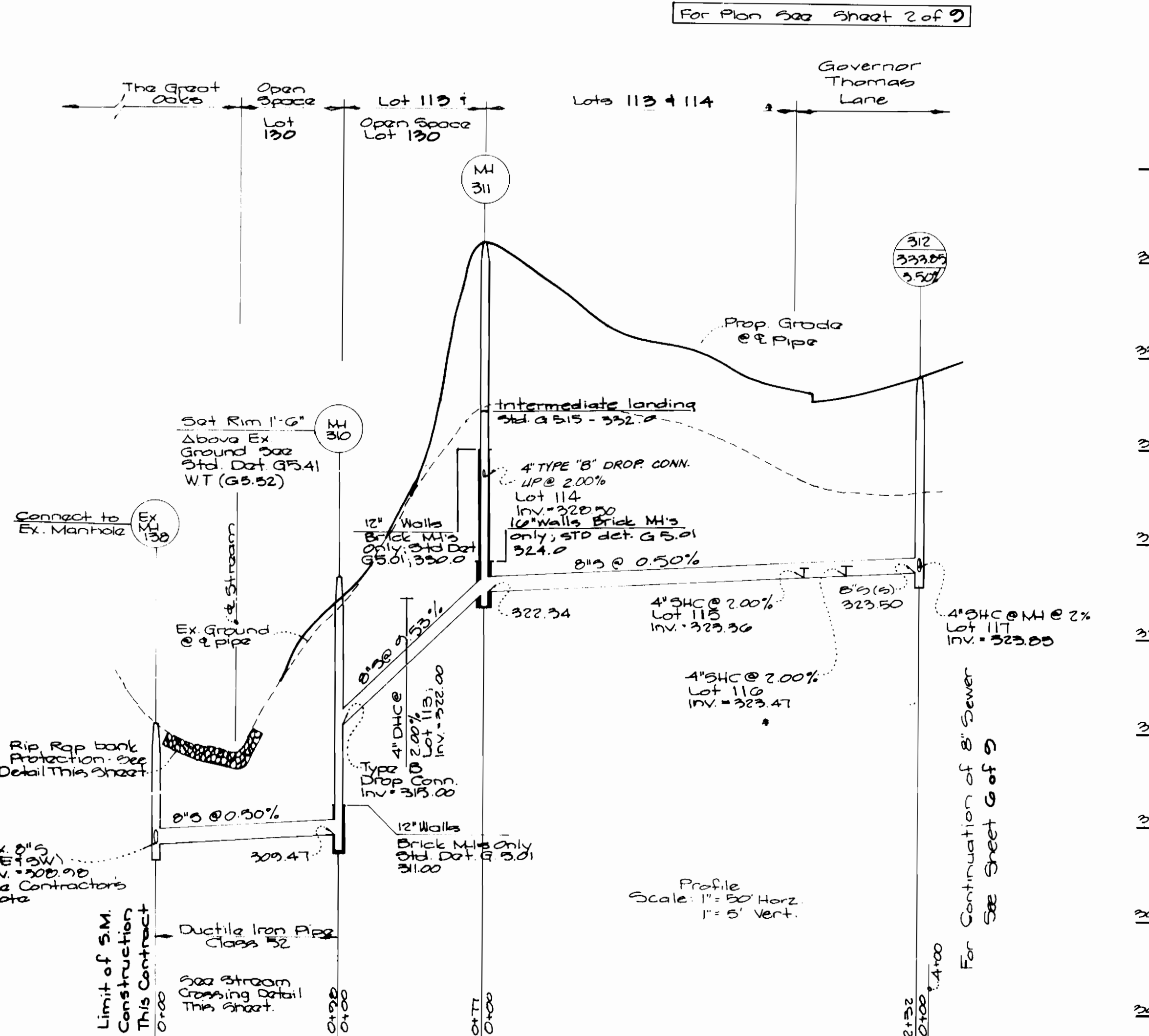
**Water & Sewer Main Profiles**  
 600' SCALE MAP NO. 18/25 BLOCK NO. 12,120/132

**Governors Run**  
 Section 2 Lots 74-130  
 2nd Election District  
 Howard County, Maryland  
 Contract No. 14-3067-D  
 SCALE AS SHOWN  
 SHEET 6 OF 9

As-built 1/17/94



**Contractor's Note**  
 Contractor Shall Verify All Invert Elevations At Existing Utilities Where Connections Are Being Made. Any Discrepancy Shall Be Reported Immediately To The Engineer.



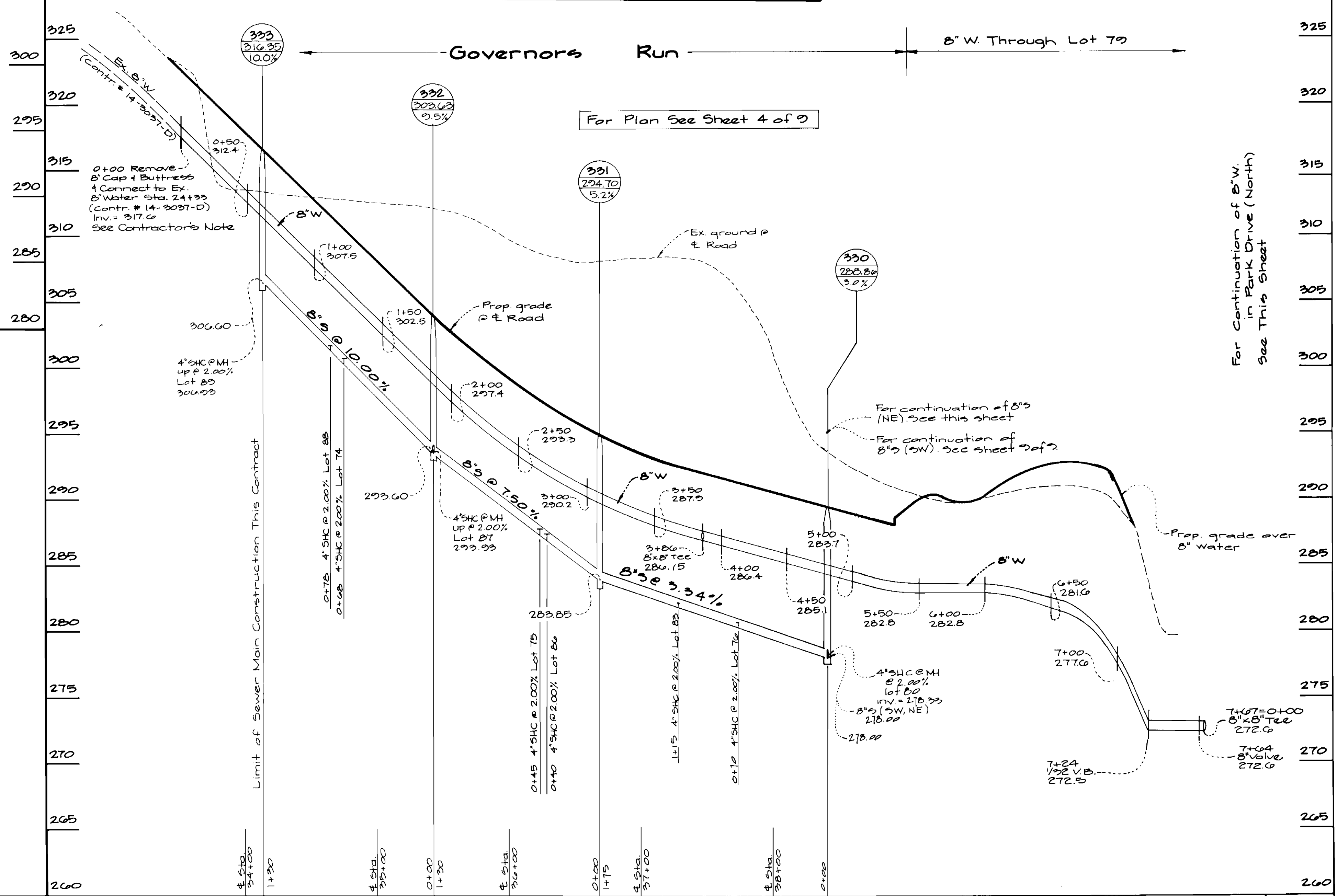
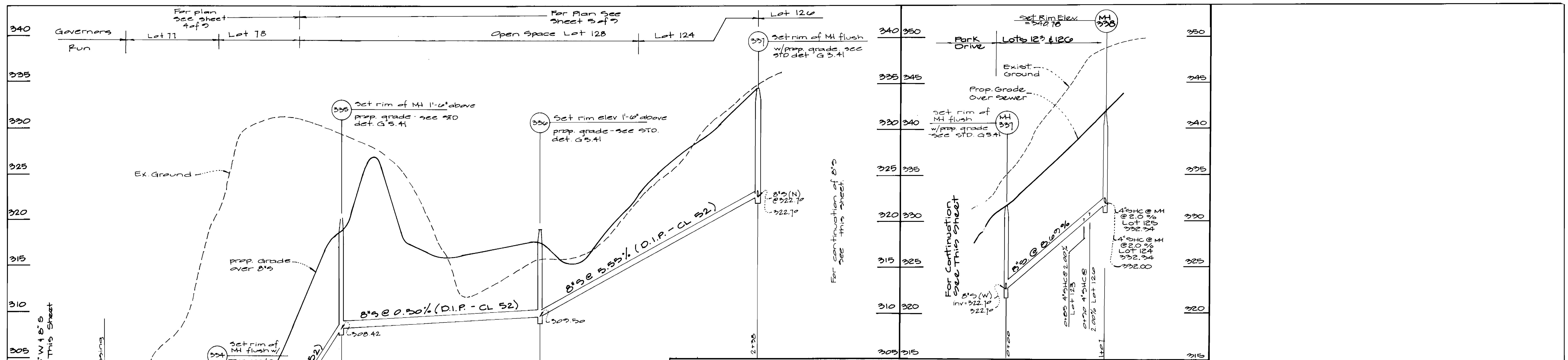
DEPARTMENT OF PUBLIC WORKS  
 HOWARD COUNTY, MARYLAND  
 Director of Public Works: *Richard A. L...* 8/2/04  
 Chief, Bureau of Engineering: *Richard A. L...* 8/2/04  
 Chief, Bureau of Utilities: *Richard A. L...* 7-26-94  
 Chief, Land Development Div: *Richard A. L...* 8/2/04

GW GUTSCHICK LITTLE & WEBER, P.A.  
 ENGINEERS, PLANNERS, SURVEYORS  
 3809 NATIONAL DRIVE SUITE 200 BURTONTVILLE OFFICE PARK  
 BURTONTVILLE, MD 20888  
 13011-421-4024

DES: GAH					
DRN: MCF					
CHK: CKG	MCF	2	REV. GROUND OVERS PROFILES 512-511-512, 7/8/10		
DATE: July 1994			REVISION: DMC @ MH 311 TO TYPE 'B' DROP CONN. 10/1/94		
BY: NO					

Sewer Main Profiles  
 600 SCALE MAP NO. 18/25 BLOCK NO. 12120/M1+2

Governors Run  
 Section 2 Lots 74-130  
 2nd Election District  
 Howard County, Maryland  
 Contract No. 14-3067-D  
 SCALE AS SHOWN  
 SHEET 7 OF 9



**Contractor's Note:** Contractor shall verify Invert Elevations at all Existing Utilities Where Connections are Being Made. Any Discrepancy shall be Reported Immediately to the Engineer.

DEPARTMENT OF PUBLIC WORKS  
HOWARD COUNTY, MARYLAND

*Michael A. Dunne* 8/2/24  
DIRECTOR OF PUBLIC WORKS  
DATE

*Michael A. Dunne* 8/2/24  
CHIEF, BUREAU OF UTILITIES  
DATE

*Michael A. Dunne* 8/2/24  
CHIEF, LAND DEVELOPMENT DIV.  
DATE

**GW GUTSCHICK LITTLE & WEBER, P.A.**  
ENGINEERS, PLANNERS, SURVEYORS

2909 NATIONAL DRIVE SUITE 250 WURTONVILLE OFFICE PARK  
BURTONSVILLE, MD 20866  
301.421.4024

*CK*

DES: G.A.H.			
DRN: G.A.H.			
CHK: C.K.G.	MCF	rev. lot numbers at MH 333	8/24/24
	MCF	rev. 8' x 8' TEE to a 8' x 8' Tee @ water sta 3+24	7/21/23
DATE: July 19, 2024	MCF 2	rev. P22-123, 325, 331 (330-331), 326-337 (326-327), 331, 332	1/3/23
BY NO.		REVISION	DATE

Water & Sewer Main Profiles

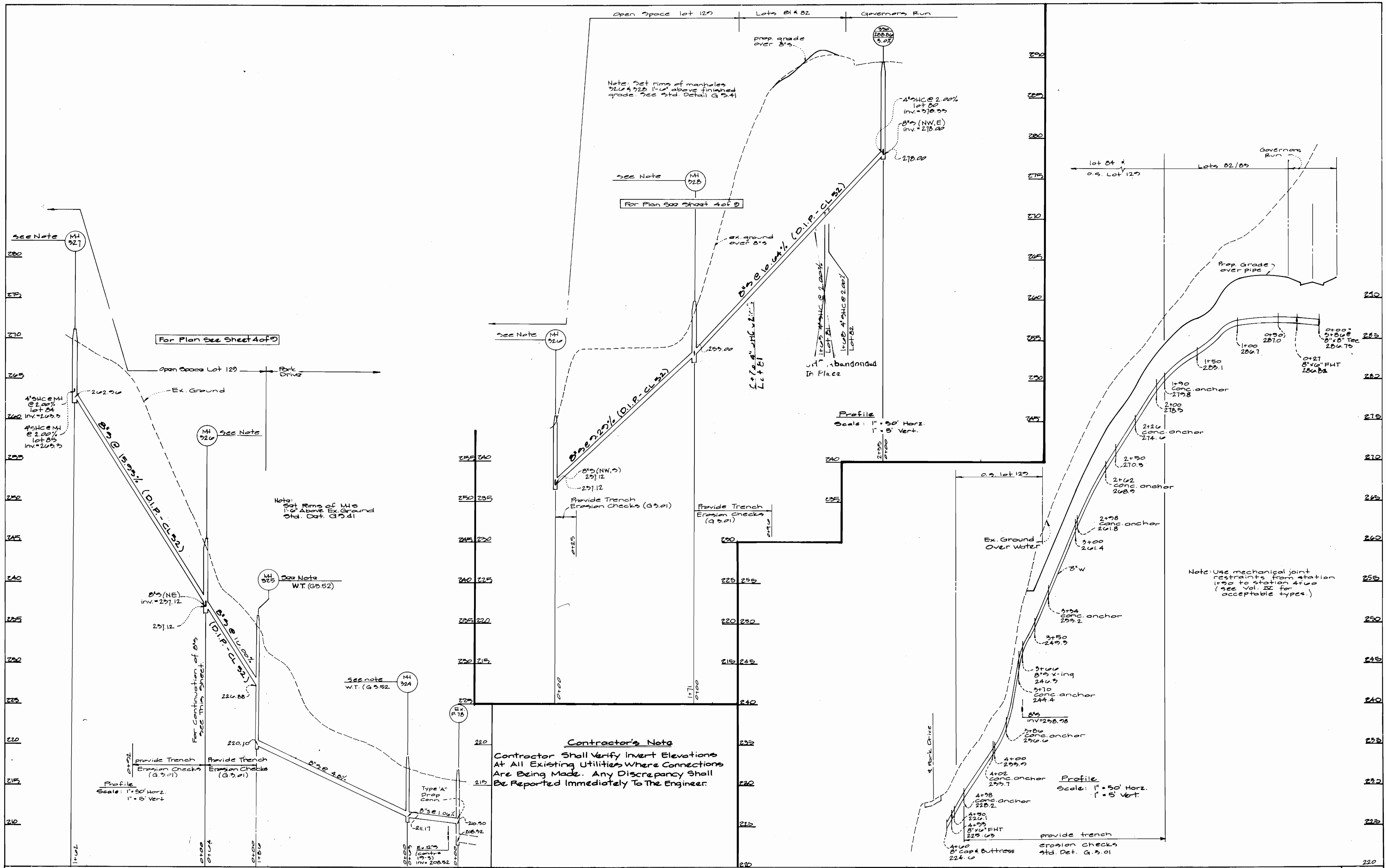
600' SCALE MAP NO. 18/25 BLOCK NO. 12120/112

**Governors Run**  
Section 2 Lots 74-130  
2nd Election District  
Howard County, Maryland  
Contract No. 14-2067-D

SCALE AS SHOWN

SHEET 8 OF 9





**Contractor's Note**  
 Contractor Shall Verify Invert Elevations At All Existing Utilities Where Connections Are Being Made. Any Discrepancy Shall Be Reported Immediately To The Engineer.

DEPARTMENT OF PUBLIC WORKS  
 HOWARD COUNTY, MARYLAND  
 Director of Public Works: *Michael A. Kurewinski* 8/3/24  
 Chief, Bureau of Engineering: *Michael A. Kurewinski* 8/3/24  
 Chief, Bureau of Utilities: *Michael A. Kurewinski* 7/20/24  
 Chief, Land Development Div.: *Michael A. Kurewinski* 8/3/24

**GW GUTSCHICK LITTLE & WEBER, P.A.**  
 ENGINEERS, PLANNERS, SURVEYORS  
 2009 NATIONAL DRIVE, SUITE 200, BURTONTOWNE OFFICE PARK  
 BURTONTOWNE, MD 20884  
 (301) 421-4024



DES:	GAH			
DRN:	GAH			
CHK:	CKG	MCF	revise sewer outfall from MH 325 to Ex. P-76 and remove & revise water profile from Berk. Dr.	1/21/15
		MCF	rev. profile 325-326 (325-327), 325-327-328 (326-328-329)	1/5/19
DATE:	July 1924	BY:	NO.	REVISION

**Sewer Main Profiles**  
 600' SCALE MAP NO. 18/25 BLOCK NO. 12/20/112

**Governors Run**  
 Section 2 Lots 74-190  
 2nd Election District  
 Howard County, Maryland  
 Contract No. 14-3067-D  
 SCALE AS SHOWN  
 SHEET 2 OF 2

AS-BUILT 1/2/25