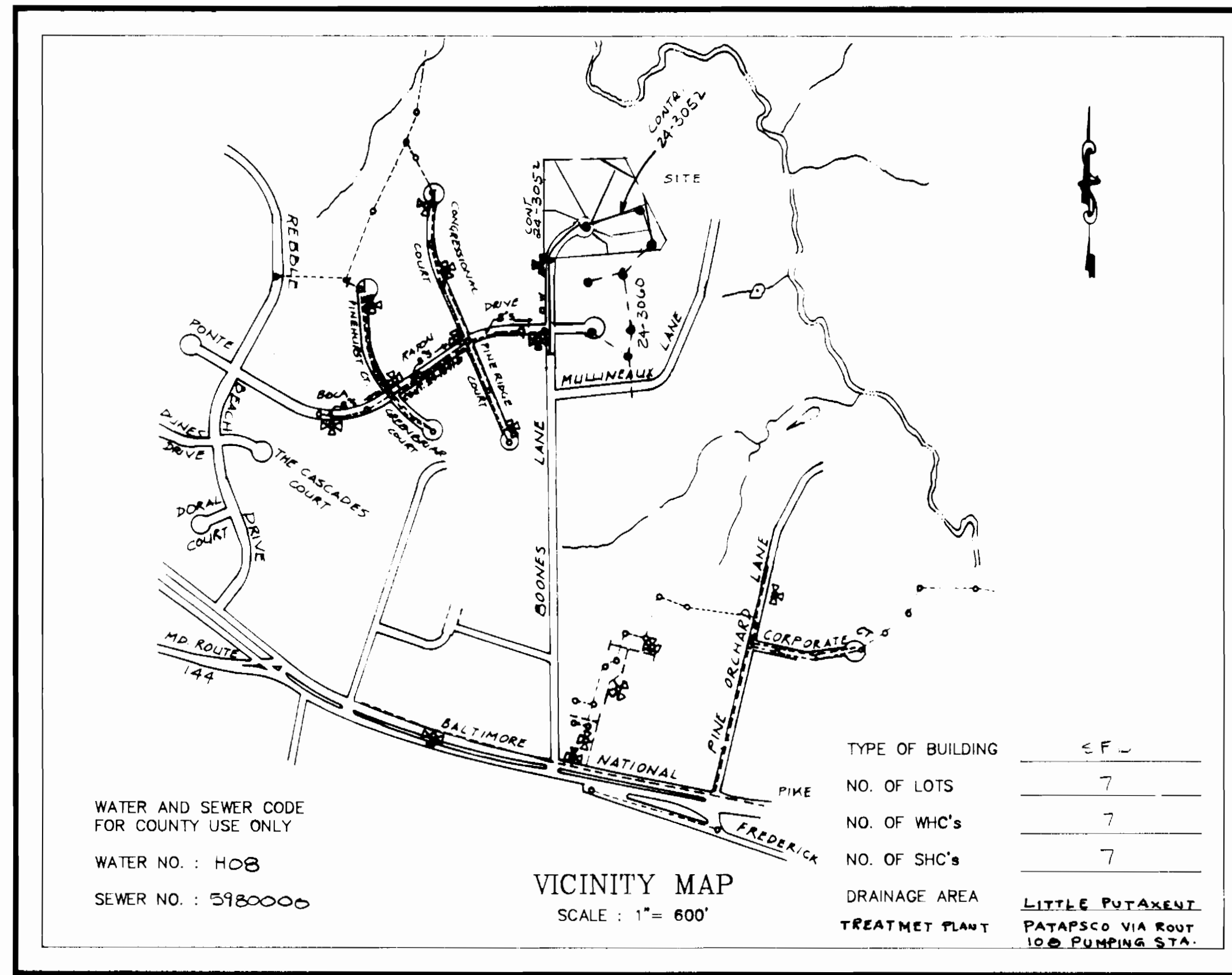


SEDIMENT CONTROL NOTES

- FOR SEDIMENT CONTROL FOR THIS CONTRACT, SEE THE APPROVED ROAD CONSTRUCTION PLANS
- MATERIALS FROM TRENCH EXCAVATION TO BE PLACED ON UPHILL SIDE OF TRENCH.
- CONTRACTOR TO BACKFILL, COMPACT AND STABILIZE IMMEDIATELY AFTER INSTALLATION OF PIPE. NO TRENCHES WILL BE LEFT OPEN AT THE END OF EACH DAY, EXCEPT THAT PORTION WHERE WORK HAS STOPPED.
- ANY SEDIMENT CONTROL FACILITIES ENCOUNTERED DURING PIPE CONSTRUCTION TO BE RETURNED TO ORIGINAL CONDITION IMMEDIATELY UPON COMPLETION OF THAT PORTION OF WORK.
- SEDIMENT CONTROL MEASURES FOR THIS CONTRACT WILL BE IMPLEMENTED IN ACCORDANCE WITH SECTION 219 OF THE HOWARD COUNTY STANDARD SPECIFICATION AND AS PER ROAD CONSTRUCTION PLANS (F-90-145)

QUANTITIES			
ITEM	ESTD	AS-BUILT	MATERIAL / SUPPLIER
8" SEWER	450'		
4" MH	24'		
4" SEWER	232'		
8" WATER	278'		
3/4" WHC	174'		
1" WHC	20'		
8" VALVE	0		
4" VALVE	0		
FM	1		
3x6" TEE	1		
6" WHITE	68'		
8x6" RED	1		
45° BEND	1		



GENERAL NOTES

- APPROXIMATE LOCATION OF EXISTING MAINS ARE SHOWN. THE CONTRACTOR SHALL TAKE ALL NECESSARY PRECAUTIONS TO PROTECT EXISTING MAINS AND SERVICES AND MAINTAIN UNINTERRUPTED SUPPLY. ANY DAMAGE INCURRED SHALL BE REPAIRED IMMEDIATELY TO THE SATISFACTION OF THE ENGINEER AT THE CONTRACTOR'S EXPENSE.
- ALL HORIZONTAL CONTROLS ARE BASED ON MARYLAND STATE COORDINATES.
- ALL VERTICAL CONTROLS ARE BASED ON U.S.G.S. DATUM
- ALL PIPE ELEVATIONS SHOWN ARE INVERT ELEVATIONS.
- CLEAR ALL UTILITIES BY A MINIMUM OF 6".
- FOR DETAILS NOT SHOWN ON THE DRAWINGS, AND FOR MATERIALS AND CONSTRUCTION METHODS, USE HOWARD COUNTY DESIGN MANUAL, VOLUME FOUR, STANDARD SPECIFICATIONS AND DETAILS FOR CONSTRUCTION. THE CONTRACTOR SHALL HAVE A COPY OF VOLUME FOUR ON THE JOB.
- WHERE TEST PITS HAVE BEEN MADE ON EXISTING UTILITIES, THEY ARE NOTED BY THE SYMBOL AT THE LOCATION OF THE TEST PIT. A NOTE OR NOTES CONTAINING THE RESULTS OF THE TEST PIT OR PITS IS INCLUDED ON THE DRAWINGS. EXISTING UTILITIES IN THE VICINITY OF THE PROPOSED WORK FOR WHICH TEST PITS HAVE BEEN DUG SHALL BE VERIFIED BY THE CONTRACTOR TO HIS OWN SATISFACTION. ANY DAMAGE TO EXISTING FACILITIES DUE TO THE CONTRACTOR'S NEGLIGENCE SHALL BE REPAIRED AT THE CONTRACTOR'S EXPENSE.
- CONTRACTOR SHALL NOTIFY THE FOLLOWING UTILITIES OR AGENCIES AT LEAST FIVE WORKING DAYS BEFORE STARTING WORK SHOWN ON THIS PLANS :
 - STATE HIGHWAY ADMINISTRATION : 531-5533
 - BALTIMORE GAS & ELECTRIC CO. - CONTRACTOR SERVICES : 850-4620
 - UNDERGROUND DAMAGE CONTROL : 859-9004
 - TROUBLE SHOOTING : 298-9001
 - MISS UTILITY : 1-559-0100
 - COLONIAL PIPELINE COMPANY : 795-1390
 - C&P TELEPHONE COMPANY : 1-800-257-7777
 - BUREAU OF UTILITIES, HOWARD COUNTY DEPARTMENT OF PUBLIC WORKS : 313-4900
- TREES AND SHRUBS ARE TO BE PROTECTED FROM DAMAGE TO MAXIMUM EXTENT. TREES AND SHRUBS LOCATED WITHIN THE CONSTRUCTION STRIP ARE NOT TO BE REMOVED OR DAMAGE BY THE CONTRACTOR.
- CONTRACTOR SHALL REMOVE TREES, STUMPS AND ROOTS ALONG LINE OF EXCAVATION. PAYMENT FOR SUCH REMOVAL SHALL BE INCLUDED IN THE UNIT PRICE BID FOR CONSTRUCTION OF THE MAIN.
- ALL WATER MAINS TO BE D.I.P. CLASS 52 UNLESS OTHERWISE NOTED.
- TOPS OF ALL WATER MAINS TO HAVE A MINIMUM OF 3-1/2" COVER UNLESS OTHERWISE NOTED.
- VALVES ADJACENT TO TEES SHALL BE STRAPPED TO TEES.
- ALL FITTINGS SHALL BE BUTTRESSED OR ANCHORED WITH CONCRETE IN ACCORDANCE WITH THE STANDARD DETAILS UNLESS OTHERWISE PROVIDED FOR ON THE DRAWINGS.
- FIRE HYDRANTS SHALL BE SET TO THE BURY LINE ELEVATIONS SHOWN ON THE DRAWINGS. ALL FIRE HYDRANTS SHALL BE STRAPPED AND BUTTRESSED WITH CONCRETE IN ACCORDANCE WITH THE STANDARD DETAILS. SOIL AROUND THE FIRE HYDRANT SHALL BE COMPACTED IN ACCORDANCE WITH SECTION 1000 AND 1005 OF THE STANDARD SPECIFICATIONS.
- THE CONTRACTOR SHALL NOT OPERATE ANY WATER MAIN VALVES ON THE EXISTING WATER SYSTEM.
- ALL WATER HOUSE CONNECTIONS SHALL BE FOR INSIDE METER SETTING, UNLESS OTHERWISE NOTED ON THE PLANS OR IN THE SPECIFICATIONS (STD. DETAIL W 3.21)
- WATER MAINS OR WATER HOUSE CONNECTION LINES MUST BE PLACE SO AS TO HAVE AT LEAST ONE (1) FOOT SEPARATION FROM THE SEWER MAIN OR SEWER HOUSE CONNECTION AS THEY PASS ABOUT IT.
- MANHOLES DESIGNATED W.T. IN PLAN AND PROFILE SHALL HAVE WATER TIGHT FRAME AND COVERS STANDARD DETAIL G 5.52 WHERE WATERTIGHT MANHOLE FRAME AND COVER IS USED. SET TOP OF FRAME 1'-6" ABOVE FINISHED GRADE UNLESS OTHERWISE NOTED ON THE DRAWINGS.
- ALL SEWER MAINS SHALL BE C.S.P.X., R.C.S.P., V.C.P.X., ~~ECP. CLASS 2000~~ OR P.V.C. UNLESS OTHERWISE NOTED.
- THE CONTRACTOR SHALL PROVIDE A JOINT IN ALL SEWER MAINS WITHIN 2'-0" OF EXTERIOR MANHOLE WALL.
- ALL MANHOLES SHALL BE 4'-0" INSIDE DIAMETER UNLESS OTHERWISE NOTED.
- MANHOLES SHOWN WITH 12" AND 16" WALLS ARE FOR BRICK MANHOLES ONLY.
- MANHOLES LOCATED WITHIN PROPOSED ROADWAY SHALL HAVE STANDARD HEAVY TRAFFIC MANHOLE FRAME AND COVER, STANDARD DETAIL G 5.51
- ALL D.I.P. FITTINGS SHALL BE IN ACCORDANCE WITH AWWA SPECIFICATION C-153 : DUCTILE IRON COMPACT FITTINGS, 3" THROUGH 12" FOR WATER & OTHER LIQUIDS.

**WATER AND SEWER
 MAIN EXTENSIONS
 SECOND ELECTION DISTRICT
 HOWARD COUNTY
 MARYLAND
 DEPARTMENT OF PUBLIC WORKS**

REVIEWED FOR HOWARD COUNTY SOIL CONSERVATION DISTRICT AND MEETS TECHNICAL REQUIREMENTS.

James M. Acker 1/17/91
 U.S. SOIL CONSERVATION SERVICE DATE

THIS DEVELOPMENT PLAN IS APPROVED FOR EROSION AND SEDIMENT CONTROL BY HOWARD SOIL CONSERVATION DISTRICT.

APPROVED :
John L. Robinson 1/17/91
 HOWARD SOIL CONSERVATION DISTRICT DATE

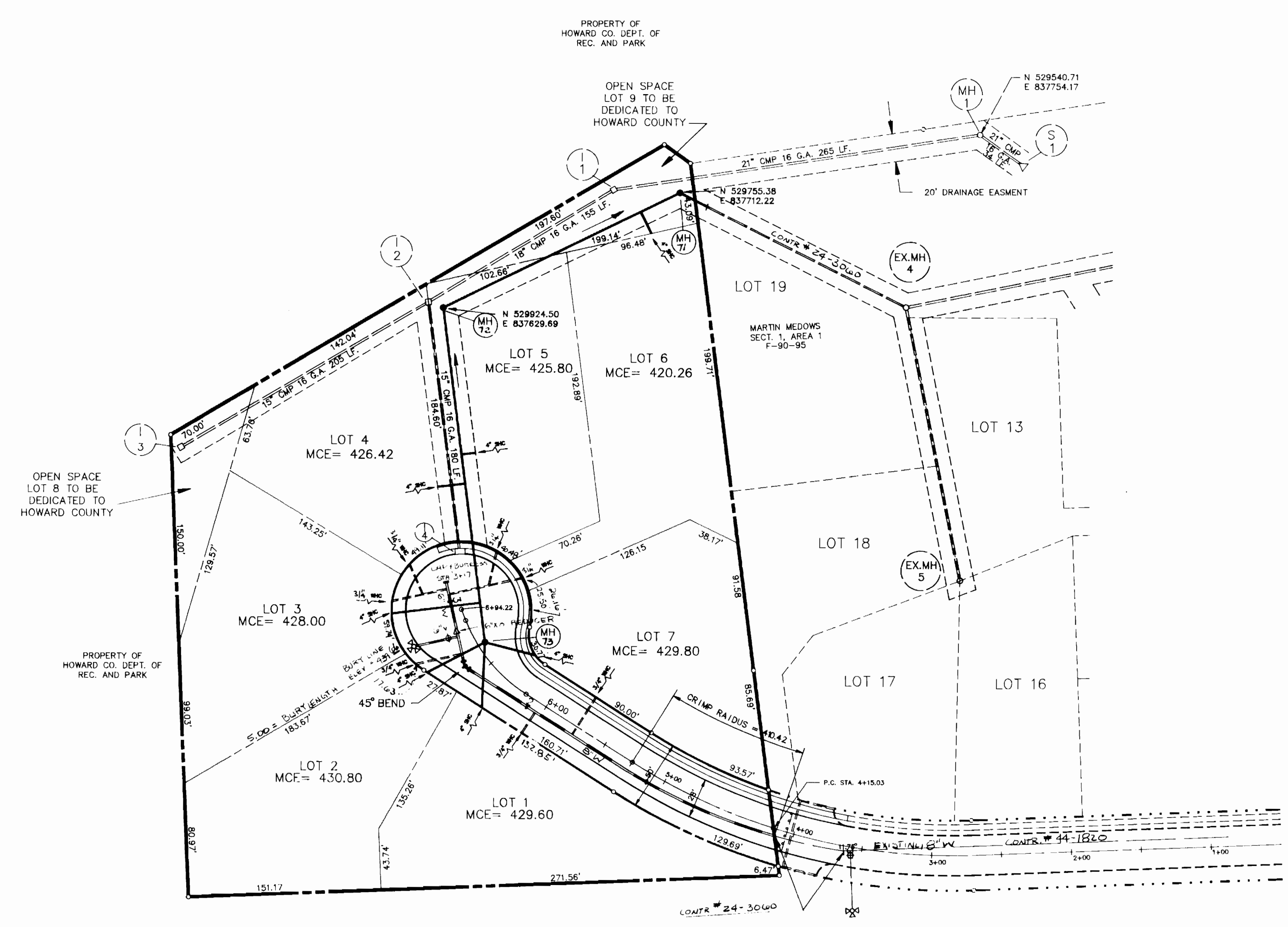
LOTS 1 - 7
 WATER & SEWER MAIN EXTENSIONS
 ELECTION DISTRICT NO. TWO
 HOWARD COUNTY, MARYLAND.

DEPARTMENT OF PUBLIC WORKS HOWARD COUNTY, MARYLAND. <i>James M. Acker</i> 1-18-91 DIRECTOR OF PUBLIC WORKS DATE <i>Robert Bevinger</i> 1-15-91 CHIEF, BUREAU OF UTILITIES DATE	PREPARED BY : AMERICAN ENGINEERING, INC. CIVIL ENGINEERING CONSULTANTS AND LAND PLANNER 671-A MAIN STREET LAUREL, MD. 20707 BALTO. (301) 880-3038 WASH. (301) 953-1221		DES : EF DRN : EF CHK : DW DATE : 3/10	TITLE SHEET	GREENBIAR MANOR LOTS 1 - 9 CONTRACT NO. 24-3052-D ELECTION DISTRICT NO 2 HOWARD COUNTY, MARYLAND.	SCALE AS SHOWN SHEET 1 OF 2
---	--	--	---	--------------------	---	--------------------------------

SEWER HOUSE CONNECTIONS	
LOT NO.	ELEVATION
1	425.92
2	425.00
3	425.60
4	425.12
5	422.54
6	415.76
7	425.70



E 837900
N 529400

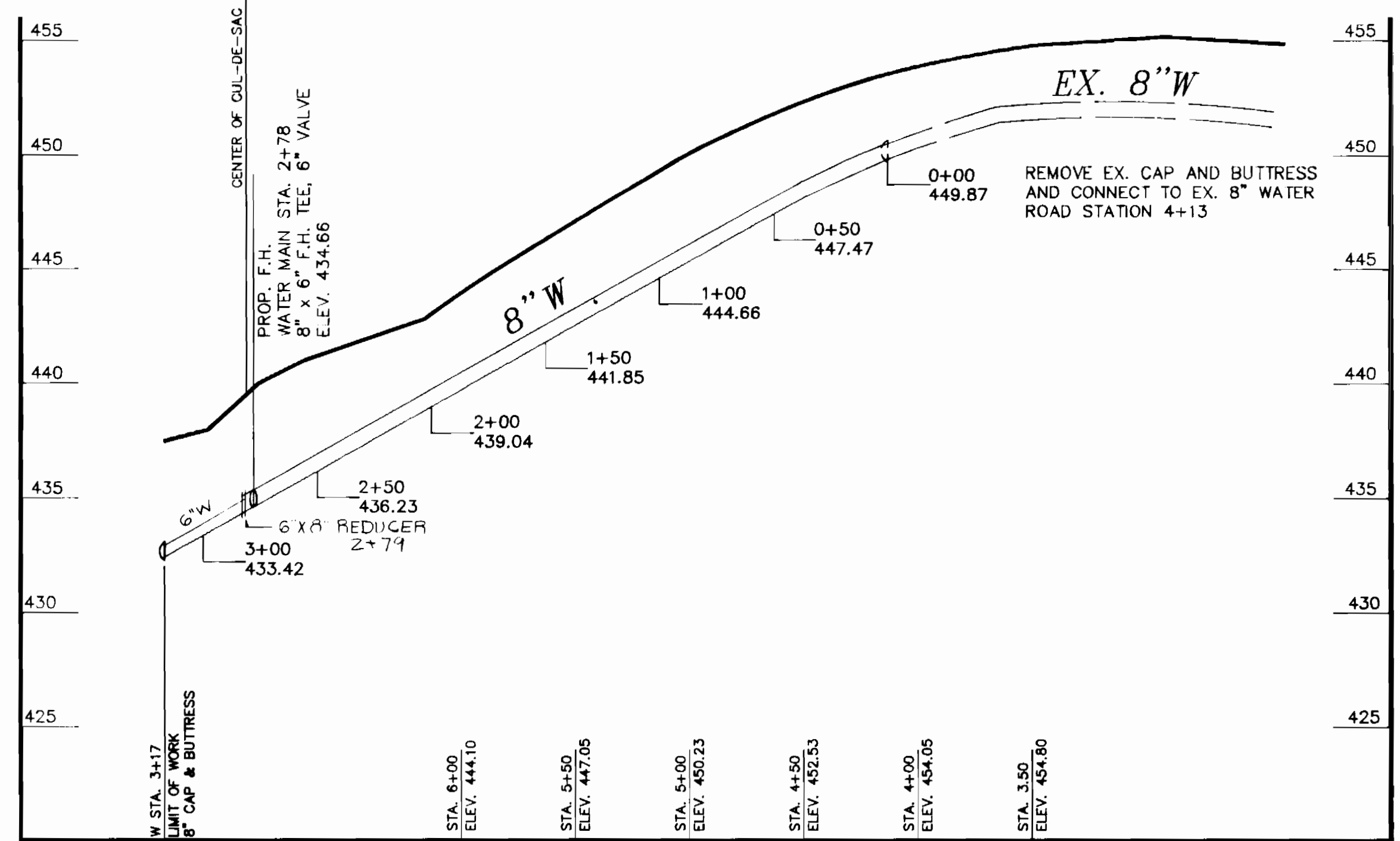


N 530200
E 837100

E 837100
N 529400

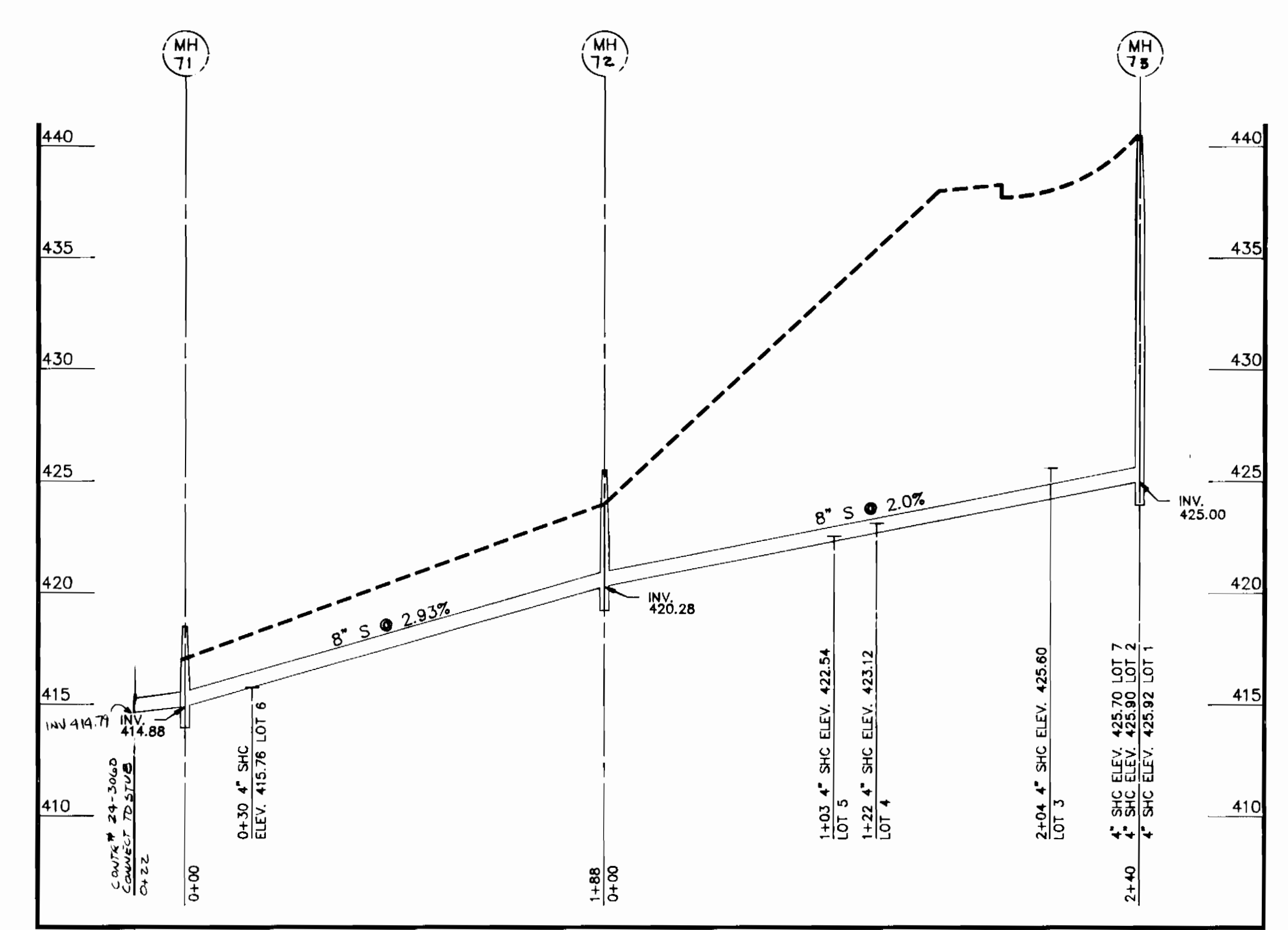
OWNER
DAVID H. AXLINE
3023 BOONES LANE
ELLCOTT CITY, MD 21043

DEVELOPER
AXLINE PROPERTY PARTNERSHIP
C/O LAND DESIGN DEVELOPMENT
10805 HICKORY RIDGE RD.
SUITE 210
COLUMBIA, MD 21044



WATER LINE PROFILE

SCALE: HORZ.: 1"=50'
VERT.: 1"=5'



SEWER LINE PROFILE

SCALE: HORZ.: 1"=50'
VERT.: 1"=5'

DEPARTMENT OF PUBLIC WORKS
HOWARD COUNTY, MARYLAND.
1/18/91
1/18/91
1/15/91

PREPARED BY:
AMERICAN ENGINEERING, INC.
CIVIL ENGINEERING CONSULTANTS
AND LAND PLANNER
671-A MAIN STREET
LAUREL, MD. 20707

DES: D.C.W.	BY NO.	REVISION	DATE
DRN: W.D.F.			
CHK: R.A.			
DATE: 3-90			

PLAN
WATER & SEWER
MAIN EXTENSIONS
600'SCALE MAP NO. 17, BLOCK NO. 19

PROJECT NAME
GREENBRIAR MANOR
CONTRACT NO. 24-3052-D
SECTION ONE / AREA ONE, LOTS 1 - 9
SECOND ELECTION DISTRICT HOWARD COUNTY, MARYLAND.
SCALE AS SHOWN
SHEET
2 OF 2