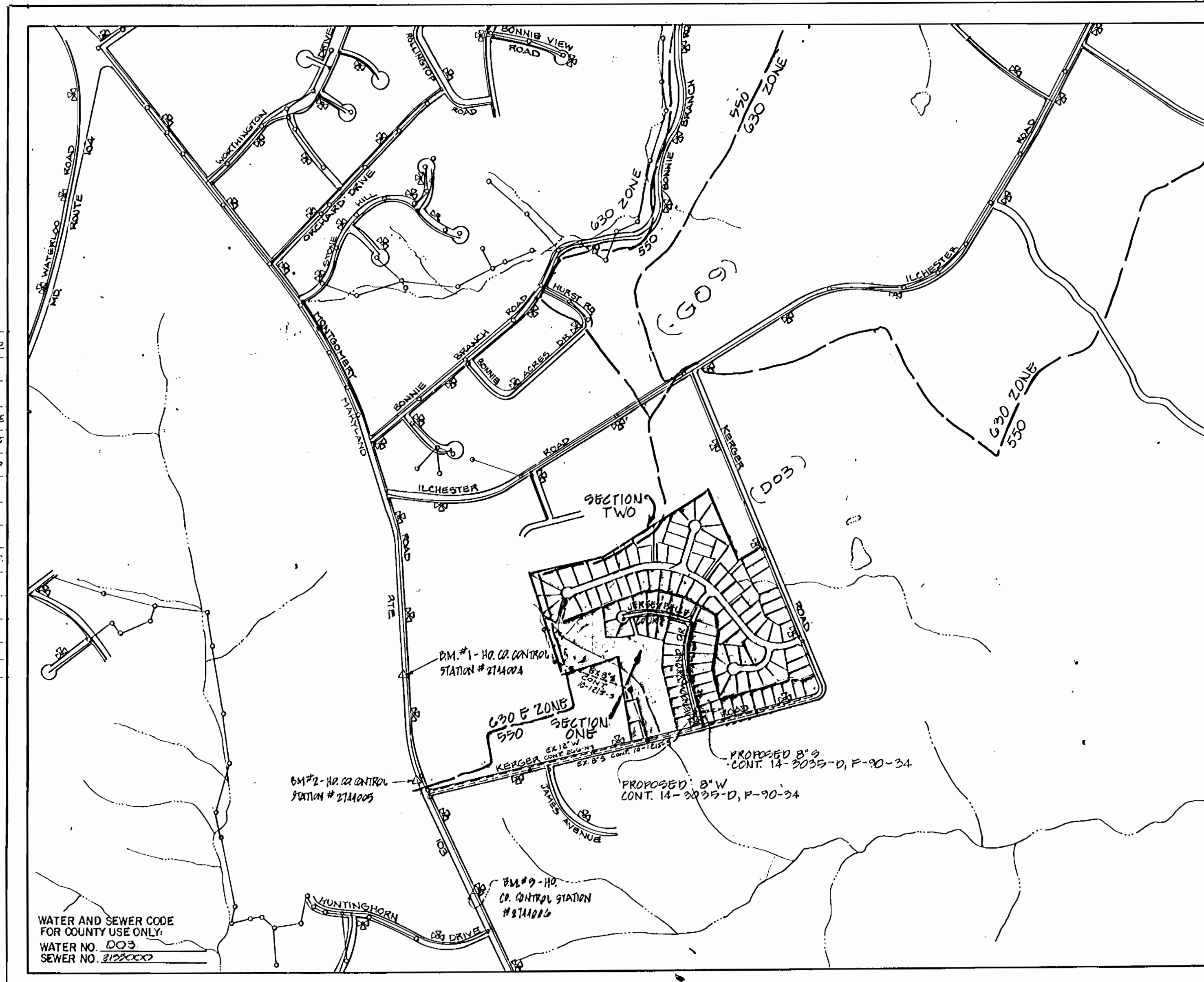


INDEX OF SHEETS	
SHEET NO.	TITLE
1	TITLE SHEET
2	PLAN OF WATER AND SEWER - KERGER ROAD AND MEADOW HIND DRIVE
3	PLAN OF WATER AND SEWER - JERSEYBELLE COURT
4	PLAN OF WATER AND SEWER - MEADOW HIND DRIVE AND JERSEYBELLE COURT
5	WATER AND SEWER PROFILES - KERGER ROAD

QUANTITIES				
ITEM	EST'D	AS BUILT	SUPPLIER	MANUFACTURER
8" WATER	1434 LF	1434 LF	WATER PRO	ATLANTIC ST.
6" WATER	138 LF	119 LF	WATER PRO	ATLANTIC ST.
3/4" W.H.C.	812 LF	711 LF	WATER PRO	CAMBRIDGE LEE
1" W.H.C.	305 LF	342 LF	WATER PRO	CAMBRIDGE LEE
FIRE HYDRANTS	3	4 EA	WATER PRO	MUSLER CO.
8" SEWER	1590 LF	1536 LF	WATER PRO	J.M. MAHFF.
8" SEWER (D.I.P.)	—	—	—	—
MANHOLES	9	9 EA	ATLANTIC CO.	ATLANTIC CO.
4" SHC	1039 LF	1337 LF	WATER PRO	J.M. MAHFF.
8" VALVES	3	3 EA	WATER PRO	MUSLER CO.
8" VALVES (EXCLUDING F.H.)	—	—	—	—
6" F.H. VALVES	3	4 EA	WATER PRO	MUSLER CO.
6" W.H.C.	103 LF	101.5 LF	WATER PRO	ATLANTIC ST.
6" RECORDER	4	—	—	—

BENCHMARK

BM#1 HOWARD COUNTY CONTROL STATION 2744004 ELEV. 415.107, 1/2" REBAR 0.25' BELOW SURFACE 7'3" W. OF ROUTE 103 & 1400' S. OF INT. WITH ILCHESTER ROAD.
 BM#2 HOWARD COUNTY CONTROL STATION 2744005 ELEV. 419.075, 1/2" REBAR 0.6' BELOW SURFACE 10'3" W. EDGE OF ROUTE 103 & 20' N. OF E. OF KERGER ROAD.
 BM#3 HOWARD COUNTY CONTROL STATION 2744006 ELEV. 400.877, CONC. MON. 0.4' BELOW SURFACE 2' E. OF ROUTE 103 & 700' S. OF KERGER ROAD 180' OFF ROUTE 103.



TYPE OF BUILDING	RESIDENTIAL - SINGLE FAMILY DETACHED DWELLING
NUMBER OF PLOTS	12
NO. OF WATER HOUSE CONNECTIONS	12
NO. OF SEWER HOUSE CONNECTIONS	12
DRAINAGE AREA	PAVED DRIVE

SCALE: 1" = 600'

GENERAL NOTES

- APPROXIMATE LOCATION OF EXISTING MAINS ARE SHOWN. THE CONTRACTOR SHALL TAKE ALL NECESSARY PRECAUTIONS TO PROTECT EXISTING MAINS AND SERVICES AND MAINTAIN UNINTERRUPTED SUPPLY. ANY DAMAGE INCURRED SHALL BE REPAIRED IMMEDIATELY TO THE SATISFACTION OF THE ENGINEER, AT THE CONTRACTOR'S EXPENSE.
- ALL HORIZONTAL CONTROLS ARE BASED ON MARYLAND STATE COORDINATES.
- ALL VERTICAL CONTROLS ARE BASED ON U.S.G.S. DATUM.
- ALL PIPE ELEVATIONS SHOWN ARE INVERT ELEVATIONS.
- CLEAR ALL UTILITIES BY A MINIMUM OF 6". CLEAR ALL POLES BY 2'-0" MINIMUM OR TUNNEL AS REQUIRED. ANY COST INCURRED TO THE CONTRACTOR FOR TUNNELING OR BRACING AT POLES SHALL BE INCLUDED IN UNIT PRICES BID FOR CONSTRUCTION OF THE MAIN.
- FOR DETAILS NOT SHOWN ON THE DRAWINGS USE HOWARD COUNTY STANDARD DETAILS.
- FOR MATERIALS AND CONSTRUCTION METHODS USE HOWARD COUNTY STANDARD SPECIFICATIONS.
- CONTRACTOR SHALL LOCATE EXISTING UTILITIES A MINIMUM OF TWO (2) WEEKS IN ADVANCE OF CONSTRUCTION OPERATIONS IN THE VICINITY OF PROPOSED UTILITIES AT HIS OWN EXPENSE.
- CONTRACTOR SHALL NOTIFY THE FOLLOWING UTILITIES OR AGENCIES AT LEAST FIVE (5) WORKING DAYS BEFORE STARTING WORK SHOWN ON THESE PLANS.
 - STATE HIGHWAY ADMINISTRATION 531-5533
 - BALTIMORE GAS AND ELECTRIC COMPANY - UNDERGROUND ELECTRIC DISTRIBUTION CUSTOMER SERVICE 685-0123
 - BALTIMORE GAS AND ELECTRIC COMPANY - UNDERGROUND GAS DISTRIBUTION CUSTOMER SERVICE 685-0123
 - ENGINEERING - "DAMAGE CONTROL" 234-5611
 - "MISS UTILITY" 1-559-0100
 - CHESAPEAKE & POTOMAC (C&P) TELEPHONE COMPANY 725-9976
 - AMERICAN TELEPHONE AND TELEGRAPH - CABLE LOCATION DIVISION 393-3533
 - COLONIAL PIPELINE COMPANY 795-1390
 - BUREAU OF UTILITIES HOWARD COUNTY 992-2366
- TREES ARE TO BE PROTECTED FROM DAMAGE TO MAXIMUM EXTENT. TREES LOCATED WITHIN THE CONSTRUCTION STRIP ARE NOT TO BE REMOVED OR DAMAGED BY THE CONTRACTOR.
- CONTRACTOR SHALL REMOVE TREES, STUMPS, AND ROOTS ALONG LINE OF EXCAVATION AS DIRECTED BY THE ENGINEER. PAYMENT FOR SUCH REMOVAL SHALL BE INCLUDED IN THE UNIT PRICE BID FOR CONSTRUCTION OF THE MAIN.
- PLACE REGULATION "MEN WORKING" AND WARNING SIGNS AS REQUIRED TO COMPLY WITH MARYLAND STATE HIGHWAY ADMINISTRATION MANUAL OF TRAFFIC CONTROL FOR HIGHWAY CONSTRUCTION AND MAINTENANCE.
- ALL WATER MAINS TO BE RIP CLASS 52
- TOP OF ALL WATER MAINS TO HAVE A MINIMUM OF 3'-1/2' COVER UNLESS OTHERWISE NOTED.
- VALVES ADJACENT TO TEES SHALL BE STRAPPED TO TEES.
- BLOCK ALL FITTINGS WITH CONCRETE.
- BURY ALL LINE ELEVATIONS ON FIRE HYDRANTS SHALL BE SET TO THE ELEVATIONS SHOWN ON THE DRAWINGS. ALL FIRE HYDRANTS SHALL BE STRAPPED AND BUTTRESSED WITH CONCRETE IN ACCORDANCE WITH STANDARD DETAILS. SOIL AROUND THE FIRE HYDRANT TO BE COMPACTED IN ACCORDANCE WITH SECTIONS 1000 AND 1005 OF THE STANDARD SPECIFICATIONS.
- ALL WATER HOUSE CONNECTIONS SHALL BE FOR INSIDE METER SETTING.
- THE CONTRACTOR SHALL NOT OPERATE ANY WATER MAIN VALVES ON THE EXISTING SYSTEM.
- ALL SEWER MAINS SHALL BE C.S.P.X., R.C.S.P., V.C.P.X. OR PVC UNLESS OTHERWISE NOTED.
- THE CONTRACTOR SHALL PROVIDE A JOINT IN ALL SEWER MAINS WITH 2'-0" OF EXTERIOR MANHOLE WALL.
- ALL MANHOLES SHALL BE 4'-0" INSIDE DIAMETER, UNLESS OTHERWISE NOTED.
- MANHOLES SHOWN WITH 12" AND 16" WALLS ARE BRICK MANHOLES ONLY.
- MANHOLES DESIGNATED W.T. IN PLAN AND PROFILE SHALL HAVE WATERTIGHT FRAME AND COVERS, STANDARD DETAIL G.5.52. WHERE WATERTIGHT MANHOLE FRAME AND COVER IS USED, SET TOP OF FRAME 1'-6" ABOVE FINISHED GRADE, STANDARD DETAIL G.5.4.
- HOUSE(S) WITH THE SYMBOL "C.N.S." INDICATES THAT CELLAR CAN NOT BE SERVED.
- RESURFACE KERGER ROAD WITH A 1 1/2" BITUMINOUS PAVING OVERLAY. SEE DUNTEACHIN FARMS SECTION ONE ROAD CONSTRUCTION DRAWINGS (E-10-34) FOR DETAILS.

DUNTEACHIN FARM

CONTRACT NO. 14-3035-D

WATER AND SEWER MAIN EXTENSIONS

HOWARD COUNTY, MARYLAND

DEPARTMENT OF PUBLIC WORKS

SECTION ONE

SEDIMENT CONTROL MEASURES FOR THIS CONTRACT WILL BE IMPLEMENTED IN ACCORDANCE WITH SECTION 219 OF THE HOWARD COUNTY DESIGN MANUAL AND STANDARDS AND SPECIFICATIONS FOR SOIL EROSION AND SEDIMENT CONTROL IN DEVELOPING AREAS AND ALSO AS SHOWN ON THE GRADING AND SEDIMENT CONTROL PLAN E-10-34.

THIS DEVELOPMENT PLAN IS APPROVED FOR EROSION AND SEDIMENT CONTROL BY HOWARD COUNTY SOIL CONSERVATION DISTRICT

REVIEW FOR HOWARD COUNTY SOIL CONSERVATION DISTRICT AND MEETS TECHNICAL REQUIREMENTS
 James M. Miller (S) 6/20/90
 U. SOIL CONSERVATION SERVICE DATE

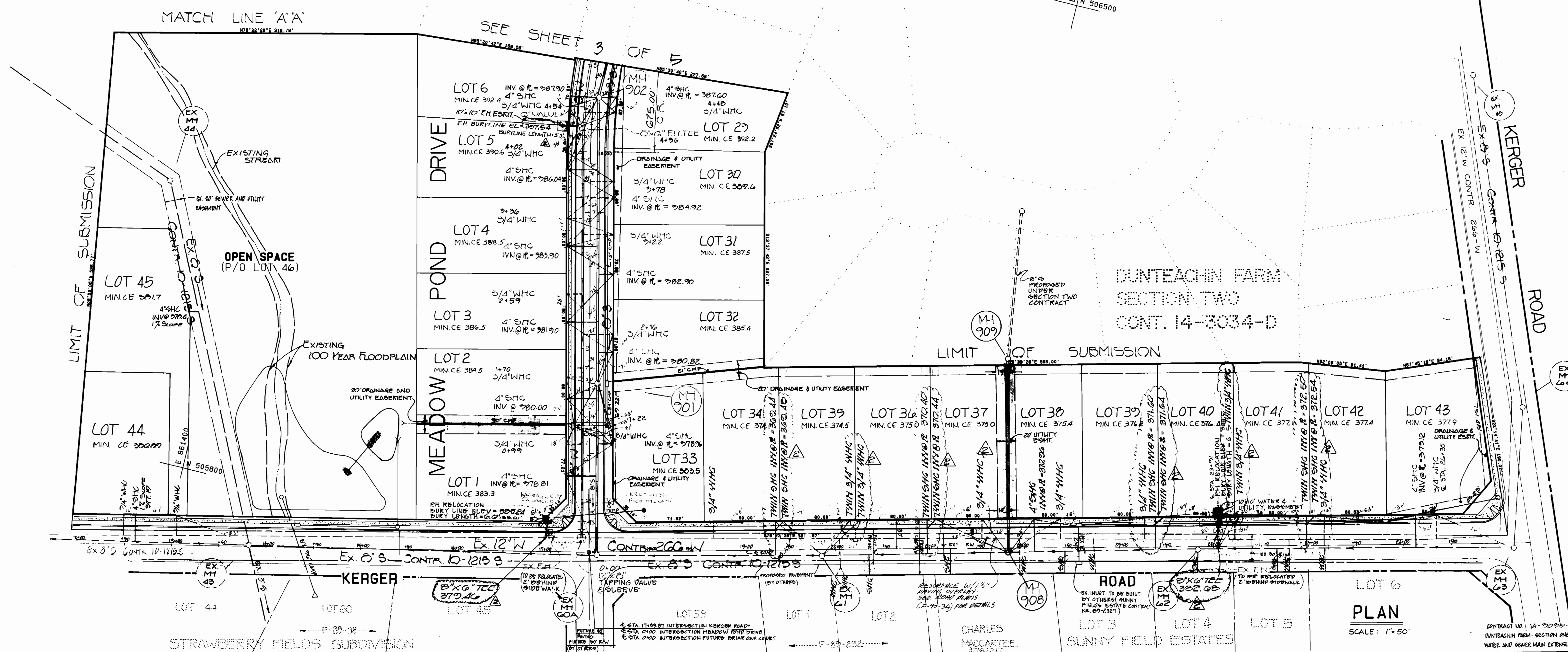
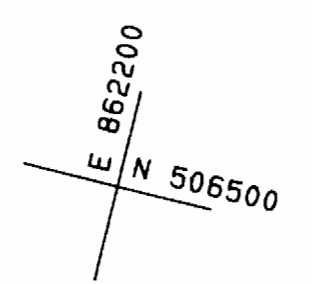
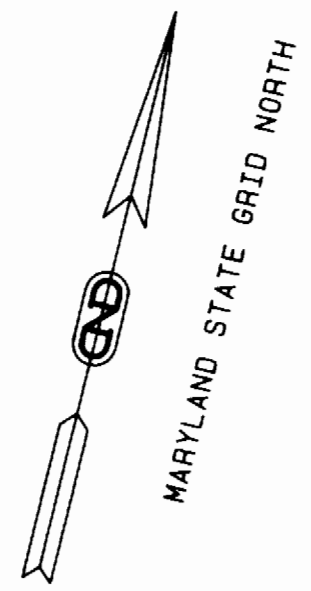
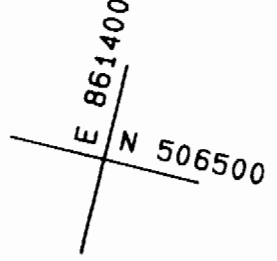
APPROVED:
 [Signature] 6/20/90
 HOWARD COUNTY SOIL CONSERVATION DISTRICT DATE

WATER & SEWER AS-BUILT

CONTRACT NO. 14-3035-D
 DUNTEACHIN FARM - SECTION ONE
 WATER AND SEWER MAIN EXTENSION

DEPARTMENT OF PUBLIC WORKS HOWARD COUNTY, MARYLAND [Signature] 6/15/90 DIRECTOR OF PUBLIC WORKS DATE [Signature] 6/15/90 CHIEF, BUREAU OF UTILITIES DATE	DEWBERRY & DAVIS ARCHITECTS-ENGINEERS-PLANNERS-SURVEYORS 200 HARRY S. TRUMAN PARKWAY ANNAPOLIS, MD. 21401 (301) 261-8707	[Professional Seal]	DES: W20 DRN: M.B.S. CHK: KMG DATE: AUG, 1989	1-23-71 ADD NOTE 26 REVISION NO. DATE	TITLE SHEET	SCALE AS SHOWN SHEET 1 OF 5
---	--	---------------------	--	--	-------------	--------------------------------

NO.	CL.	RD.	STATION	DISTANCE	RIM	SLOPE
MEADOW POND DRIVE						
1	1+70		9' RIGHT	990.04	2.02%	
2	4+80		1' RIGHT	991.09	2.02%	
OUTFALL						



DEPARTMENT OF PUBLIC WORKS
HOWARD COUNTY, MARYLAND

[Signature] 4/25/90
DIRECTOR OF PUBLIC WORKS DATE

[Signature] 6-15-90
CHIEF, BUREAU OF UTILITIES DATE

DEWBERRY & DAVIS
ARCHITECTS ENGINEERS PLANNERS SURVEYORS

200 HARRY S. TRUMAN PARKWAY
ANNAPOLIS, MD. 21401
(301) 261-8707



DES: WED	SES	2	ADD 1/4\"/>
DRN: WED	W/C		ADD TWIN 3/4\"/>
CHK: WMG	W/C		REVISED BURY DEPTH FOR 161 DG KERGER RD REVISED CURBLINE FIN'S.
DATE: AUG., 1989	BY	NO.	REVISION

PLAN
WATER & SEWER MAINS

600' SCALE MAP NO. 91 BLOCK NO.

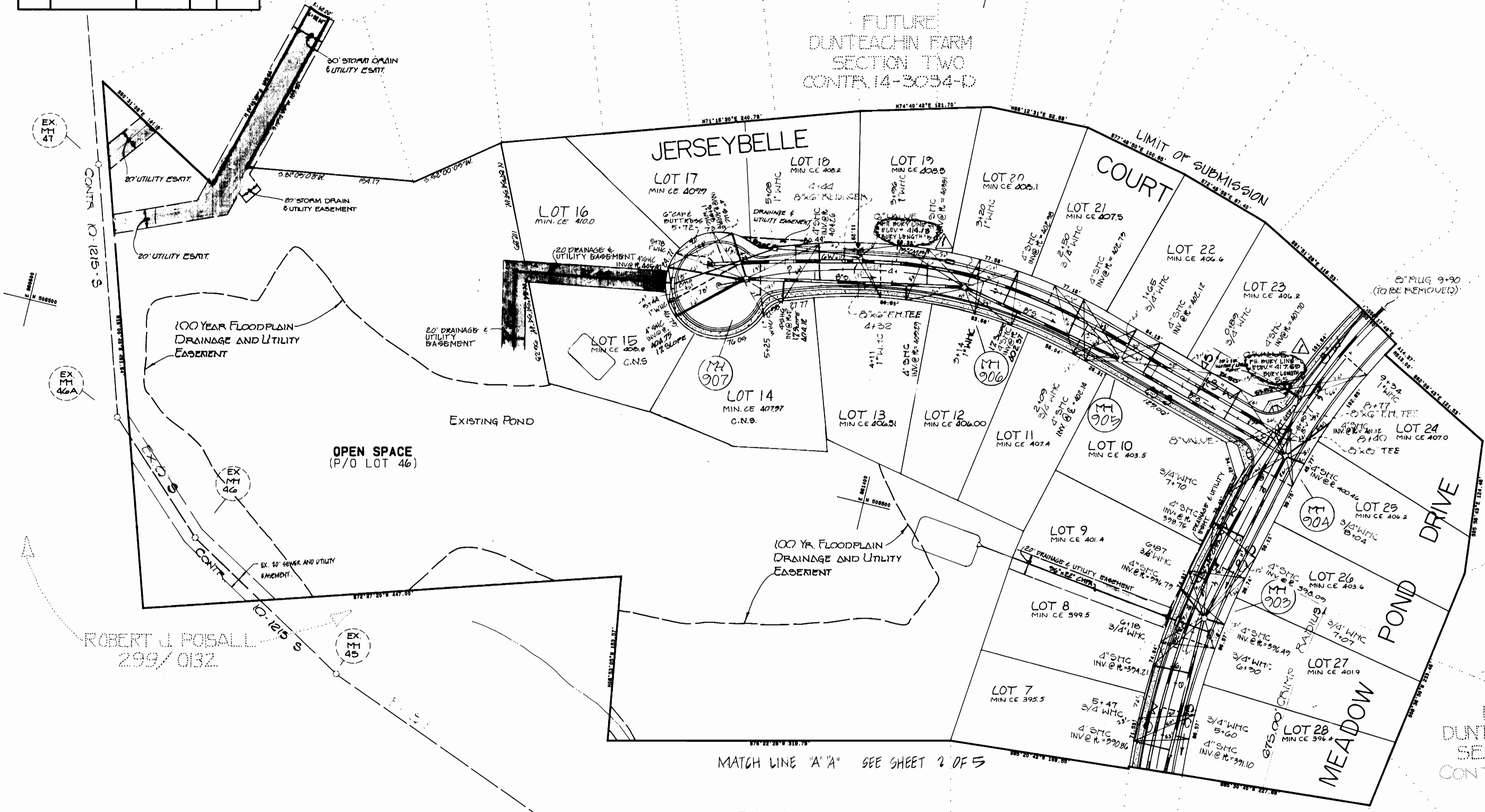
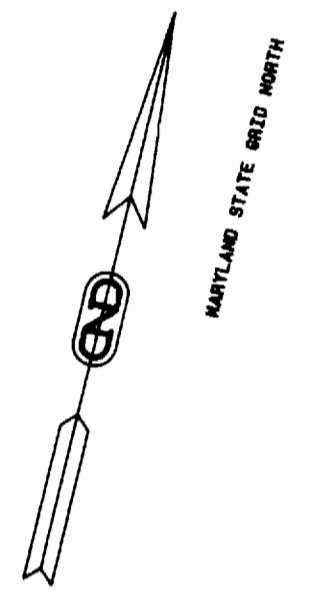
DUNTEACHIN FARM
CONTRACT NO. 14-3034-D
TAX MAP 31 BLOCK 21 PARCEL 222
1ST ELECTION DISTRICT
HOWARD COUNTY, MARYLAND

SCALE AS SHOWN
SHEET 2 OF 3

BRUNING 441 126 61 50

AS-BUILT W5018 EC 3/8/13

NO.	CL. NO.	STATION	DISTANCE	RIM	SLOPE
MEADOW POND DRIVE					
4	81.96		6' RIGHT	411.96	1.00%
5	81.66		5' RIGHT	411.96	1.00%
JERSEYBELLE COURT					
3	14.75		1' LEFT	418.75	2.00%
6	91.97		4' LEFT	419.97	2.00%
7	91.45		2' LEFT	419.97	2.00%
OUTFALL					



PLAN
SCALE: 1"=50'

ROBERT J. POSALL
299/0132

CONTRACT NO. 14-3035-D
DUNTEACHIN FARM - SECTION ONE
WATER / 18" SEWER MAIN EXTENSION

DEPARTMENT OF PUBLIC WORKS
HOWARD COUNTY, MARYLAND

Director of Public Works: *Robert J. Posall* 6/25/90
Chief Bureau of Utilities: *Robert J. Posall* 6-15-90

Chief Bureau of Engineering: *Sheffield Anderson-Palmer* 6/25/90
Chief Land Development Division: *Sheffield Anderson-Palmer* 6/25/90

DEWBERRY & DAVIS
ARCHITECTS-ENGINEERS-PLANNERS-SURVEYOR

200 HARRY S. TRUMAN PARKWAY
ANNAPOLIS, MD. 21401
(301) 261-8707



DES: WED					
DRN: WED					
CHK: KMG					
DATE: APR 1989	BY: WED	NO.:	REVISION: REVISE BURY LINES ON F.H. 10	DATE: 11/25/92	

PLAN
WATER & SEWER MAINS

600' SCALE MAP NO. 21 BLOCK NO.

DUNTEACHIN FARM

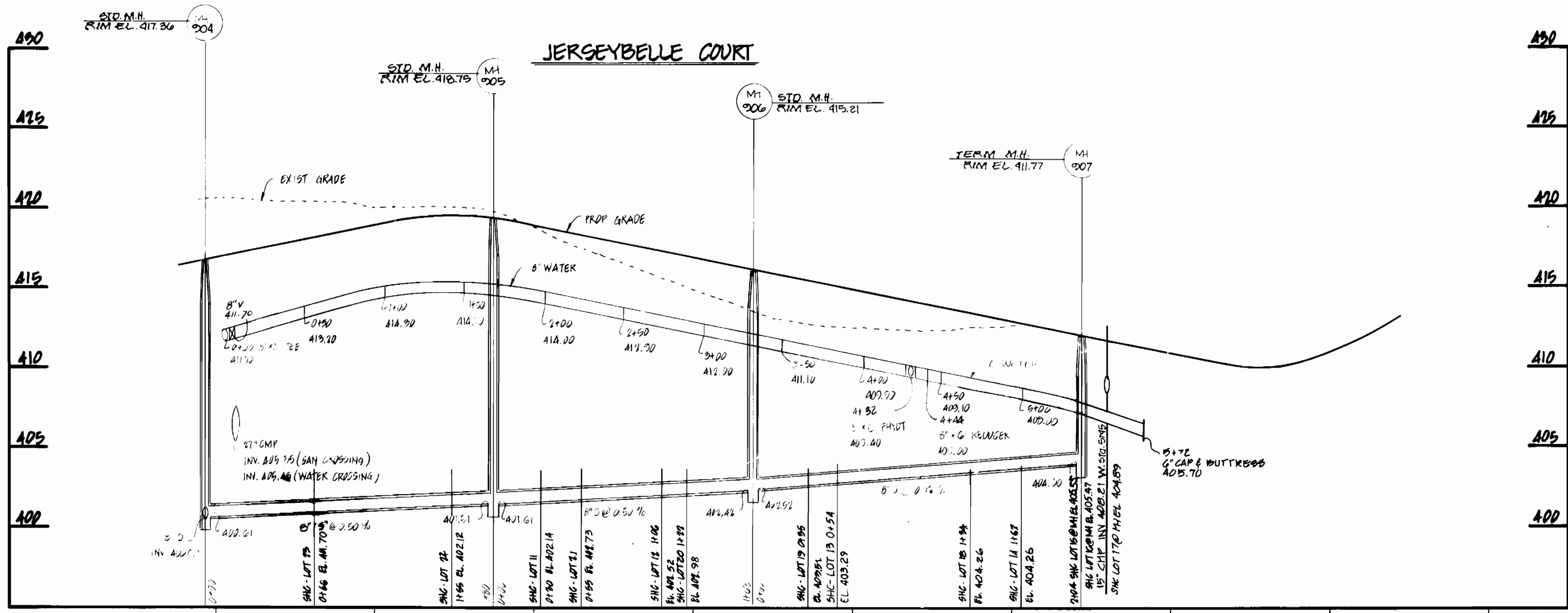
CONTRACT NO. 14-3035-D
TAX MAP 31 BLOCK 21 PARCEL 222
1ST ELECTION DISTRICT
HOWARD COUNTY, MARYLAND

AS-BUILT

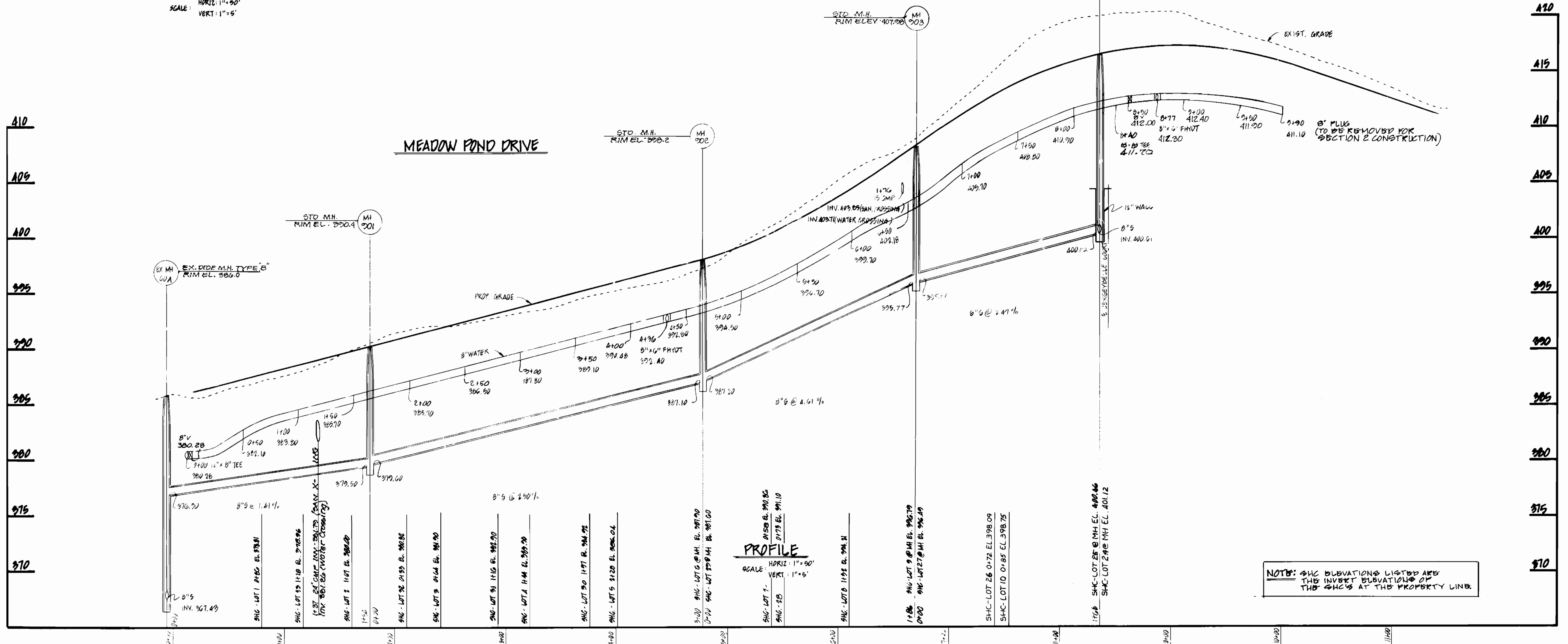
SCALE: 1"=50'
SHEET 9 OF 9

BRUNING 44-132 (6/1/90)

WS018-EC



PROFILE
SCALE: HORIZ: 1"=30'
VERT: 1"=5'



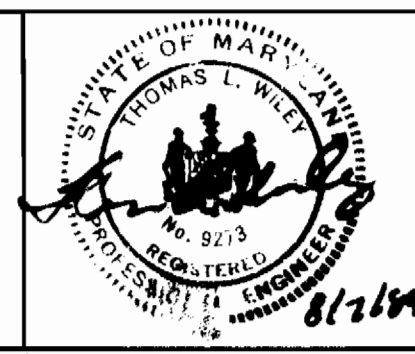
PROFILE
SCALE: HORIZ: 1"=30'
VERT: 1"=5'

NOTE: SHC ELEVATIONS LISTED ARE THE INVERT ELEVATIONS OF THE SHCS AT THE PROPERTY LINE.

CONTRACT NO. 14-303B-D
DUNTEACHIN FARM - SECTION ONE
WATER AND SEWER MAIN EXTENSION

DEPARTMENT OF PUBLIC WORKS
HOWARD COUNTY, MARYLAND
6/25/90
6-15-90

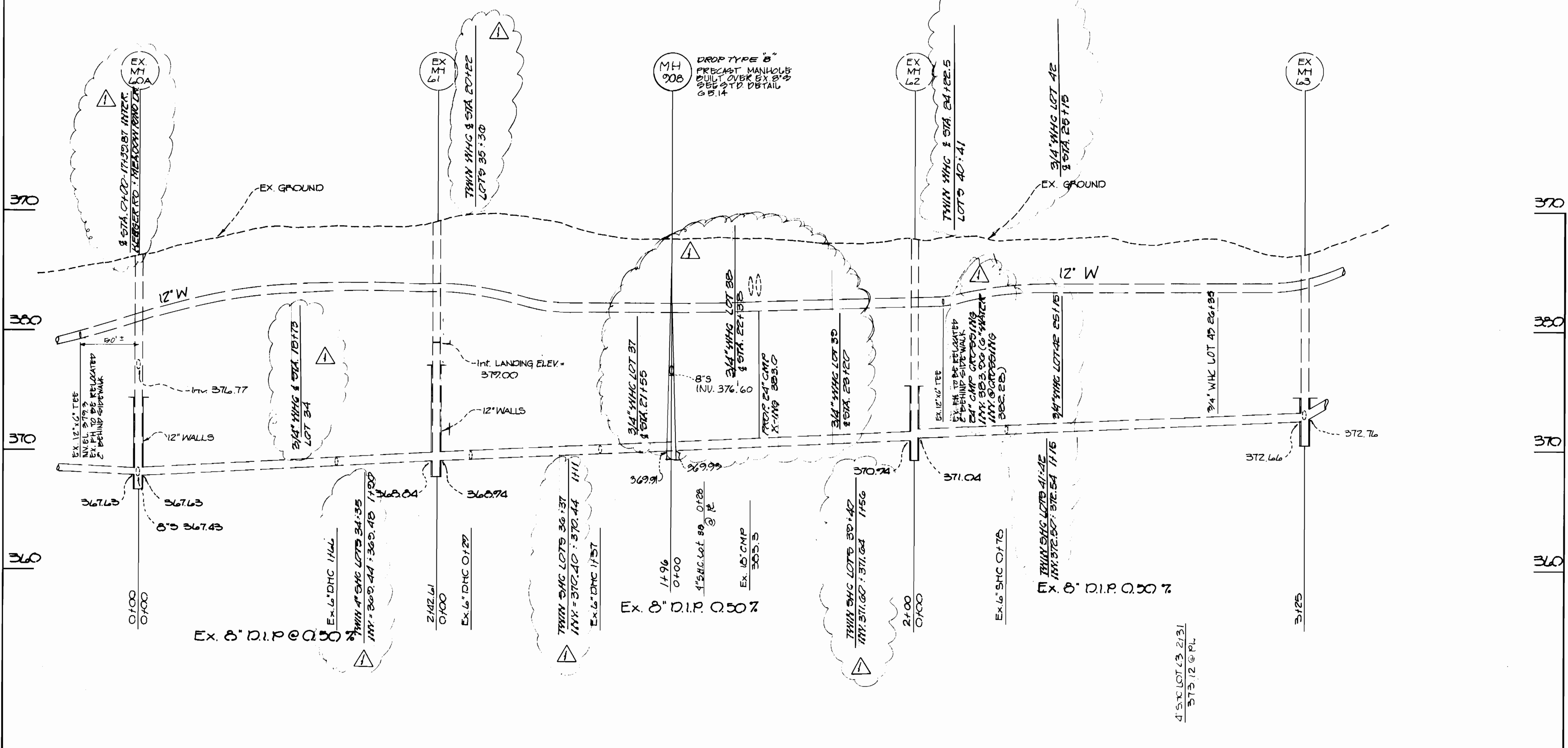
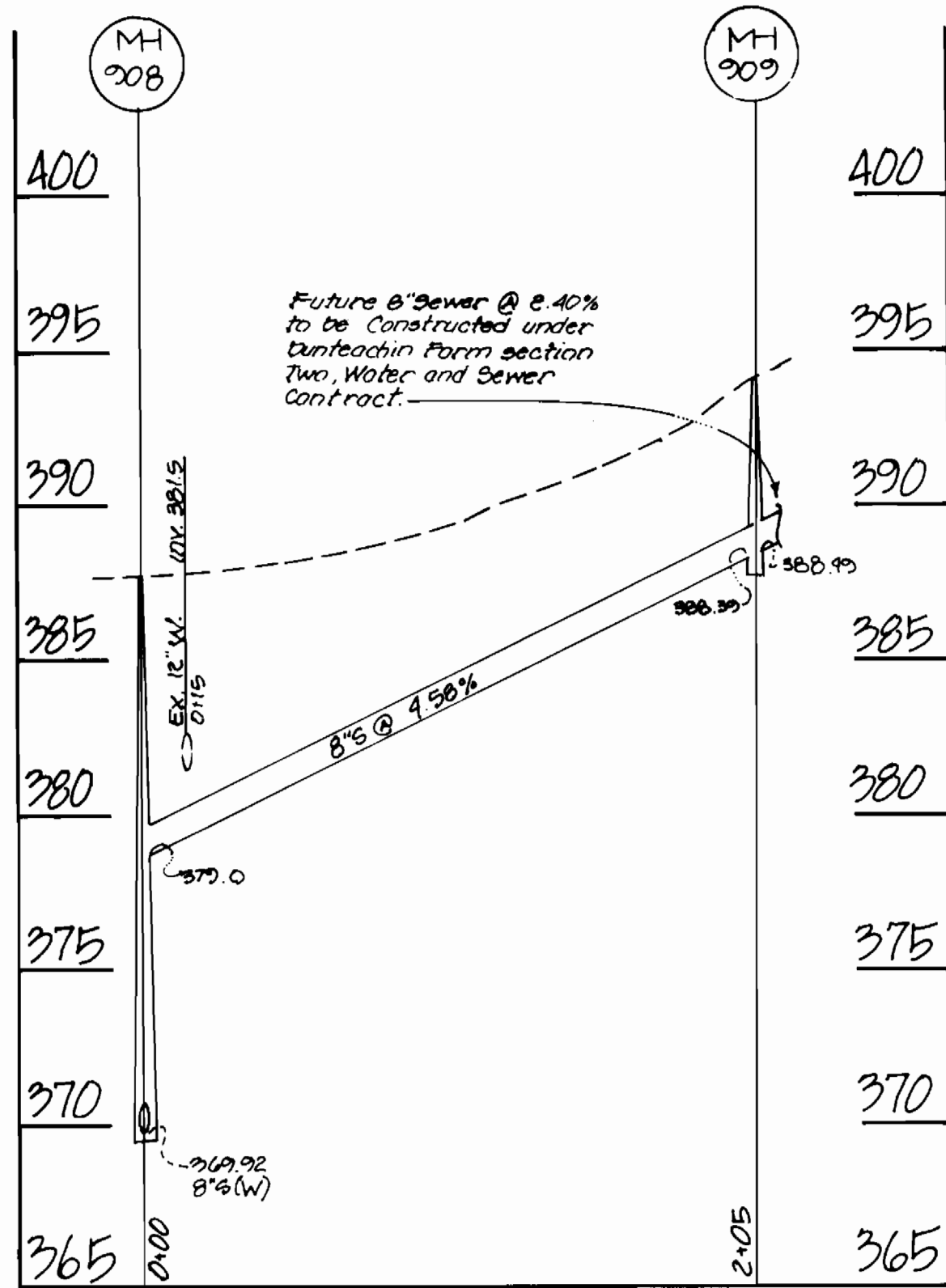
DEWBERRY & DAVIS
ARCHITECTS - ENGINEERS - PLANNERS - SURVEYORS
200 HARRY S. TRUMAN PARKWAY
ANNAPOLIS, MD. 21401
(301) 261-8707



DES: WEO			
DRN: DMP			
CHK: KMG			
DATE: 6/15/90	BY: [Signature]	NO. [Blank]	REVISION [Blank]

WATER AND SEWER PROFILES
600' SCALE MAP NO. 91 BLOCK NO. [Blank]

DUNTEACHIN FARM
CONTRACT NO. 14-303B-D
TAX MAP 31 BLOCK 21 PARCEL 222
1ST ELECTION DISTRICT
HOWARD COUNTY, MARYLAND
SCALE: Vert: 1"=5' Horiz: 1"=30'
SHEET 4 OF 5



Notes: S.M.C. elevations listed are the invert elevations of the S.M.C.'s at the property line.

CONTRACT NO. 14-3035-D
DUNTEACHIN FARM - SECTION ONE
WATER AND SEWER MAIN EXTENSION

DEPARTMENT OF PUBLIC WORKS
HOWARD COUNTY, MARYLAND
DIRECTOR OF PUBLIC WORKS: *[Signature]* 6/25/20
CHIEF, BUREAU OF ENGINEERING: *[Signature]* 6/15/20
CHIEF, BUREAU OF UTILITIES: *[Signature]* 6-15-90
CHIEF, LAND DEVELOPMENT DIVISION: *[Signature]* 6/15/20

DEWBERRY & DAVIS
ARCHITECTS - ENGINEERS - PLANNERS - SURVEYORS
200 HARRY S. TRUMAN PARKWAY
ANNAPOLIS, MD 21401
(301) 261-8707



DES: WED			
DRN: WED			
CHK: KMG			
DATE: AUG, 1999	BY: WED	NO. 1	REVISION: 100 TWIN 1/4 AC LOT 25 & 26, LOT 45 & 46, 100 TWIN 1/4 AC LOTS 34, 35, 36, 37, 38, 39, 40, 41, 42

WATER AND SEWER PROFILE
DATE: 6/15/20
600' SCALE MAP NO. 21 BLOCK NO. 222

DUNTEACHIN FARM
CONTRACT NO. 14-3035-D
TAX MAP 31 BLOCK 21 PARCEL 222
1ST ELECTION DISTRICT
HOWARD COUNTY, MARYLAND

SCALE
Vert: 1"=5'
Horz: 1"=50'
SHEET
5 OF 9