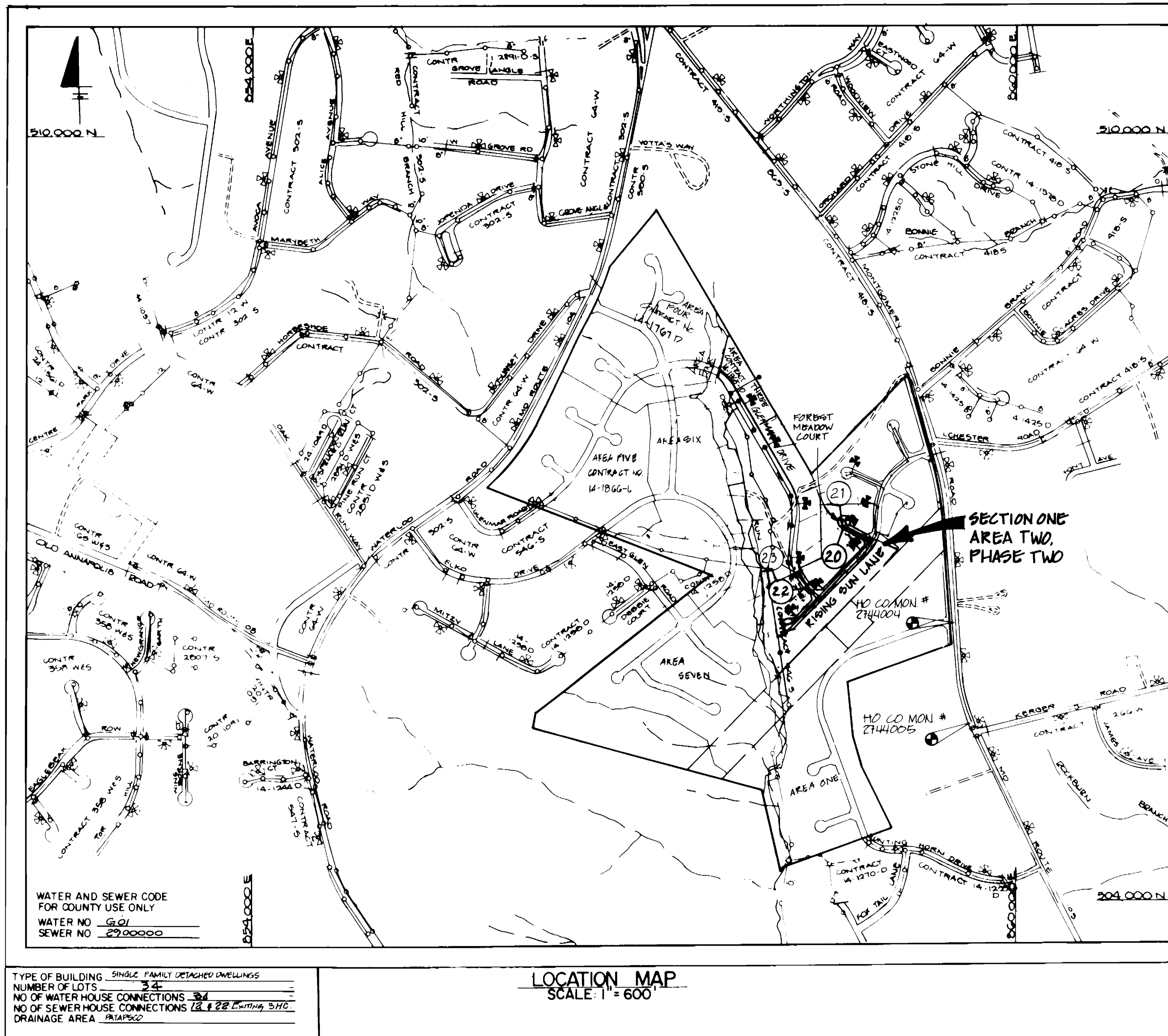


QUANTITIES			
ITEM	EST'D	AS BUILT	SUPPLIER
8" WATER	868'		
6" WATER	198'		
3/4" W.H.C.	213'		
1" W.H.C.			
FIRE HYDRANTS	2		
8" SEWER	623'		
8" SEWER (D.I.P.)			
MANHOLES	5		
4" S.H.C.	255'		
8" VALVES	2		
6" VALVES (EXCLUDING F.H.)			
6" F.H. VALVES	2		



- ### GENERAL NOTES
- APPROXIMATE LOCATION OF EXISTING MAINS ARE SHOWN. THE CONTRACTOR SHALL TAKE ALL NECESSARY PRECAUTIONS TO PROTECT EXISTING MAINS AND SERVICES AND MAINTAIN UNINTERRUPTED SUPPLY. ANY DAMAGE INCURRED SHALL BE REPAIRED IMMEDIATELY TO THE SATISFACTION OF THE ENGINEER, AT THE CONTRACTOR'S EXPENSE.
 - ALL HORIZONTAL CONTROLS ARE BASED ON MARYLAND STATE COORDINATES.
 - ALL VERTICAL CONTROLS ARE BASED ON U.S.G.S DATUM.
 - ALL PIPE ELEVATIONS SHOWN ARE INVERT ELEVATIONS.
 - CLEAR ALL UTILITIES BY A MINIMUM OF 6" CLEAR ALL POLES BY 2'-0" MINIMUM OR TUNNEL AS REQUIRED. ANY COST INCURRED TO THE CONTRACTOR FOR TUNNELING OR BRACING AT POLES SHALL BE INCLUDED IN UNIT PRICES BID FOR CONSTRUCTION OF THE MAIN.
 - FOR DETAILS NOT SHOWN ON THE DRAWINGS USE HOWARD COUNTY STANDARD DETAILS.
 - FOR MATERIALS AND CONSTRUCTION METHODS USE HOWARD COUNTY STANDARD SPECIFICATIONS.
 - CONTRACTOR SHALL LOCATE EXISTING UTILITIES A MINIMUM OF TWO (2) WEEKS IN ADVANCE OF CONSTRUCTION OPERATIONS IN THE VICINITY OF PROPOSED UTILITIES AT HIS OWN EXPENSE.
 - CONTRACTOR SHALL NOTIFY THE FOLLOWING UTILITIES OR AGENCIES AT LEAST FIVE (5) WORKING DAYS BEFORE STARTING WORK SHOWN ON THESE PLANS.
 - STATE HIGHWAY ADMINISTRATION 531-5533
 - BALTIMORE GAS AND ELECTRIC COMPANY - UNDERGROUND ELECTRIC DISTRIBUTION CUSTOMER SERVICE 685-0123
 - BALTIMORE GAS AND ELECTRIC COMPANY - UNDERGROUND GAS DISTRIBUTION CUSTOMER SERVICE 685-0123
 - ENGINEERING - "DAMAGE CONTROL" 234-5611
 - "MISS UTILITY" 1-559-0100
 - CHESAPEAKE & POTOMAC (C&P) TELEPHONE COMPANY 725-9976
 - AMERICAN TELEPHONE AND TELEGRAPH - CABLE LOCATION DIVISION 393-3533
 - COLONIAL PIPELINE COMPANY 795-1390
 - BUREAU OF UTILITIES HOWARD COUNTY 992-2366
 - TREES ARE TO BE PROTECTED FROM DAMAGE TO MAXIMUM EXTENT. TREES LOCATED WITHIN THE CONSTRUCTION STRIP ARE NOT TO BE REMOVED OR DAMAGED BY THE CONTRACTOR.
 - CONTRACTOR SHALL REMOVE TREES, STUMPS, AND ROOTS ALONG LINE OF EXCAVATION AS DIRECTED BY THE ENGINEER. PAYMENT FOR SUCH REMOVAL SHALL BE INCLUDED IN THE UNIT PRICE BID FOR CONSTRUCTION OF THE MAIN.
 - PLACE REGULATION "MEN WORKING" AND WARNING SIGNS AS REQUIRED TO COMPLY WITH MARYLAND STATE HIGHWAY ADMINISTRATION MANUAL OF TRAFFIC CONTROL FOR HIGHWAY CONSTRUCTION AND MAINTENANCE.
 - ALL WATER MAINS TO BE D.I.P. CLASS 52 ONLY.
 - TOP OF ALL WATER MAINS TO HAVE A MINIMUM OF 3'-1/2" COVER UNLESS OTHERWISE NOTED.
 - VALVES ADJACENT TO TEES SHALL BE STRAPPED TO TEES.
 - BLOCK ALL FITTINGS WITH CONCRETE.
 - BURY LINE ELEVATIONS ON ALL FIRE HYDRANTS SHALL BE SET TO THE ELEVATIONS SHOWN ON THE DRAWINGS. ALL FIRE HYDRANTS SHALL BE STRAPPED AND BUTTRESSED WITH CONCRETE IN ACCORDANCE WITH STANDARD DETAILS. SOIL AROUND THE FIRE HYDRANT TO BE COMPACTED IN ACCORDANCE WITH SECTIONS 10.05 OF THE STANDARD SPECIFICATIONS.
 - ALL WATER HOUSE CONNECTIONS SHALL BE FOR INSIDE METER SETTING UNLESS OTHERWISE SHOWN.
 - THE CONTRACTOR SHALL NOT OPERATE ANY WATER MAIN VALVES ON THE EXISTING SYSTEM.
 - FOR ALL COPPER W.H.C.s, UTILIZE FLARED, TYPE FITTINGS ONLY.
 - ALL SEWER MAINS SHALL BE C.S.P.X., F.C.S.P., V.C.P.X., OR PVC UNLESS OTHERWISE NOTED.
 - THE CONTRACTOR SHALL PROVIDE A JOINT IN ALL SEWER MAINS WITH 2'-0" OF EXTERIOR MANHOLE WALL.
 - ALL MANHOLES SHALL BE 4'-0" INSIDE DIAMETER, UNLESS OTHERWISE NOTED.
 - FORCE MAINS SHALL BE D.I.P. ONLY.
 - MANHOLES DESIGNATED W.T. IN PLAN AND PROFILE SHALL HAVE WATERTIGHT FRAME AND COVERS, STANDARD DETAIL G 5 52. WHERE WATERTIGHT MANHOLE FRAME AND COVER IS USED, SET TOP OF FRAME 1'-6" ABOVE FINISHED GRADE, STANDARD DETAIL G 5 41.
 - HOUSE (S) WITH THE SYMPOLE "C.N.S." INDICATES THAT CELLAR CAN NOT BE SERVED.
 - ALL D.I.P. FITTINGS SHALL BE IN ACCORDANCE WITH AWWA SPECIFICATION C-153 DUCTILE IRON COMPACT FITTINGS, 3-INCH THROUGH 12-INCH WIDTH AND OTHER LIQUIDS.
 - ALL S.H.C.s ARE AT 2% SLOPE.
 - ALL CONSTRUCTION TO BE DONE AS PER THIS PLAN AND HOWARD COUNTY DESIGN MANUAL VOL. IV.

BENCHMARKS

HOWARD CO MON # 2744004 ELEV 415.907
 3/4" REBAR 0.5' BELOW SURFACE, 7' (W) OF ROUTE 109 AND 140' E (S) OF INTER. WITH ICHHESTER ROAD
 HOWARD CO MON # 2744005 ELEV 419.025
 3/4" REBAR 0.6' BELOW SURFACE, 10' (W) EDGE OF ROUTE 109 AND 80' (S) OF 6 OF KEBBER ROAD

MONTGOMERY MEADOWS

SECTION ONE - AREA TWO, PHASE TWO

WATER AND SEWER MAIN EXTENSIONS

HOWARD COUNTY, MARYLAND

DEPARTMENT OF PUBLIC WORKS

CONTRACT NO. 14-3033-D

LOTS 76 THROUGH 110

SEDIMENT CONTROL MEASURES FOR THIS CONTRACT WILL BE IMPLEMENTED IN ACCORDANCE WITH SECTION 219 OF THE HOWARD COUNTY DESIGN MANUAL AND STANDARDS AND SPECIFICATIONS FOR SOIL EROSION AND SEDIMENT CONTROL IN DEVELOPING AREAS AND ALSO AS SHOWN ON THE GRADING AND SEDIMENT CONTROL PLAN F-88-244.

THIS DEVELOPMENT PLAN IS APPROVED FOR EROSION AND SEDIMENT CONTROL BY HOWARD SOIL CONSERVATION DISTRICT

REVIEW FOR HOWARD COUNTY SOIL CONSERVATION DISTRICT AND MEETS TECHNICAL REQUIREMENTS
James M. Nelson 5-2-90
 U.S. SOIL CONSERVATION SERVICE DATE

APPROVED:
Shelby W. Allen 5/1/90
 HOWARD SOIL CONSERVATION DISTRICT DATE

CONTRACT NO. 14-3033-D
 MONTGOMERY MEADOWS
 SECTION ONE - AREA TWO, PHASE II
 WATER & SEWER MAIN EXTENSIONS

DEPARTMENT OF PUBLIC WORKS
 HOWARD COUNTY, MARYLAND
Robert M. Beatty 5-4-90
 DIRECTOR OF PUBLIC WORKS DATE
Robert M. Beatty 4-24-90
 CHIEF, BUREAU OF UTILITIES DATE

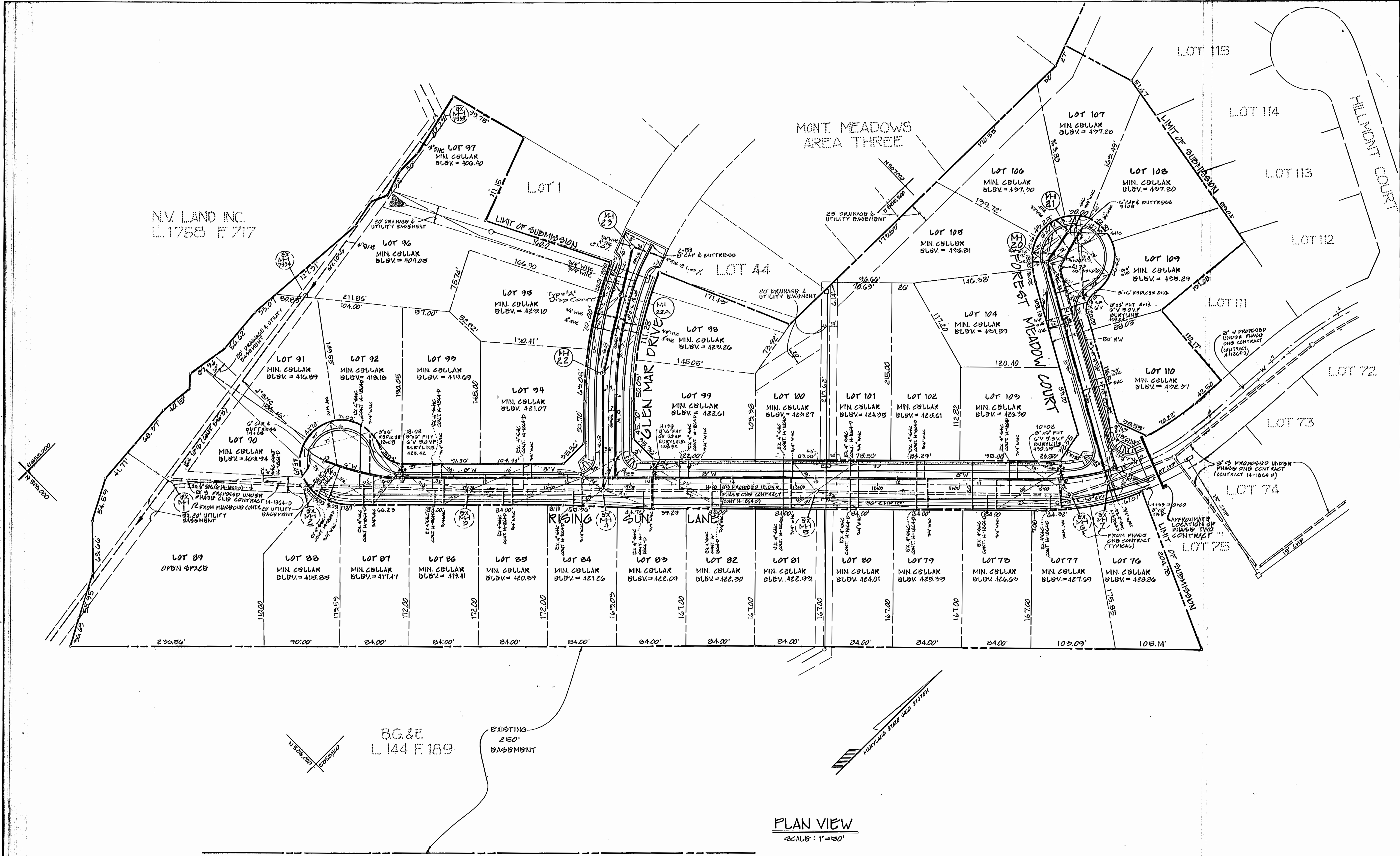
DEWBERRY & DAVIS
 ARCHITECTS-ENGINEERS-PLANNERS-SURVEYORS
 200 HARRY S. TRUMAN PARKWAY,
 ANNAPOLIS, MD 21401
 (301) 261-8707
Shelby W. Allen
 4/1/90

DES.					
DRN.					
CHK.					
DATE:	BY:	NO.	REVISION	DATE	

TITLE SHEET
 600 SCALE MAP NO. 221 BLOCK NO. 14

WATER & SEWER PLANS
 MONTGOMERY MEADOWS
 SECTION ONE - AREA TWO, PHASE TWO
 CONTRACT NO. 14-3033-D
 1st. ELECTION DISTRICT
 HOWARD COUNTY, MARYLAND

SCALE AS SHOWN
 SHEET 1 OF 3



PLAN VIEW
SCALE: 1"=30'

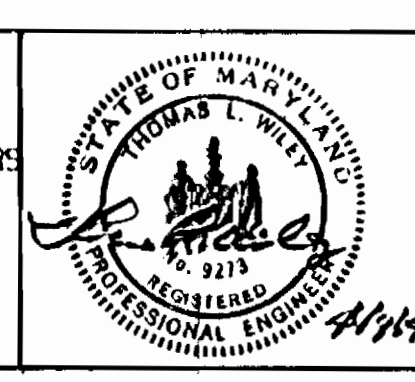
DEPARTMENT OF PUBLIC WORKS
HOWARD COUNTY, MARYLAND

Robert J. Bunker
DIRECTOR OF PUBLIC WORKS
DATE: 5-4-90

Robert J. Bunker
CHIEF, BUREAU OF UTILITIES
DATE: 4-24-90

DEWBERRY & DAVIS
ARCHITECTS-ENGINEERS-PLANNERS-SURVEYORS

200 HARRY S. TRUMAN PARKWAY
ANNAPOLIS, MD. 21401
(301) 261-8707



DES:				
DRN:				
CHK:	MCF	Add MH22A w/drop connection	6/20/90	
	BLD	REVISED SHC FOR LOT 91	7/31/90	
DATE:	12/87	REVISED BY FOR RECORDING CORRECTION 1/10/90	1/13/90	
BY	NO.	REVISION	DATE	

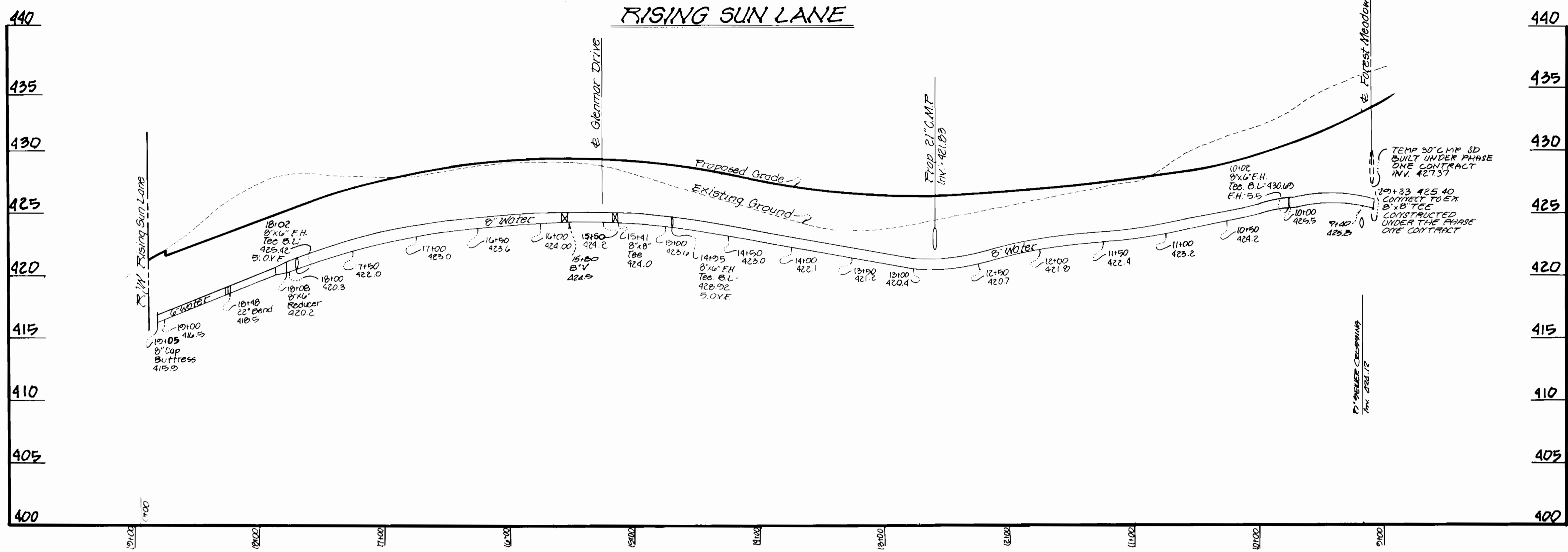
PLAN VIEW
WATER & SEWER MAINS

600' SCALE MAP NO. _____ BLOCK NO. _____

WATER & SEWER PLANS
MONTGOMERY MEADOWS
SECTION ONE AREA TWO, PHASE TWO
CONTRACT NO. 14-3033-D
1ST. ELECTION DISTRICT
HOWARD COUNTY, MARYLAND

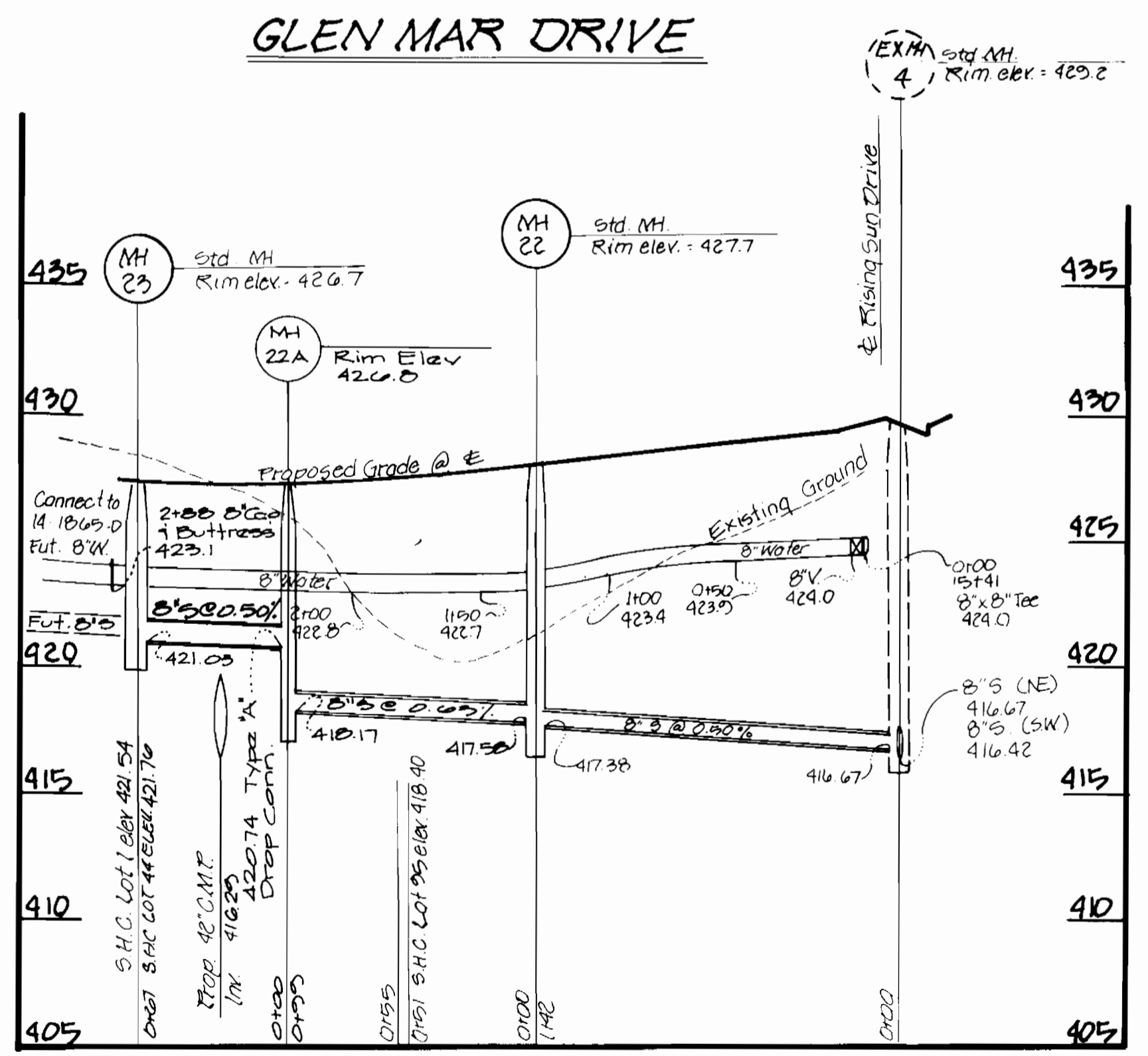
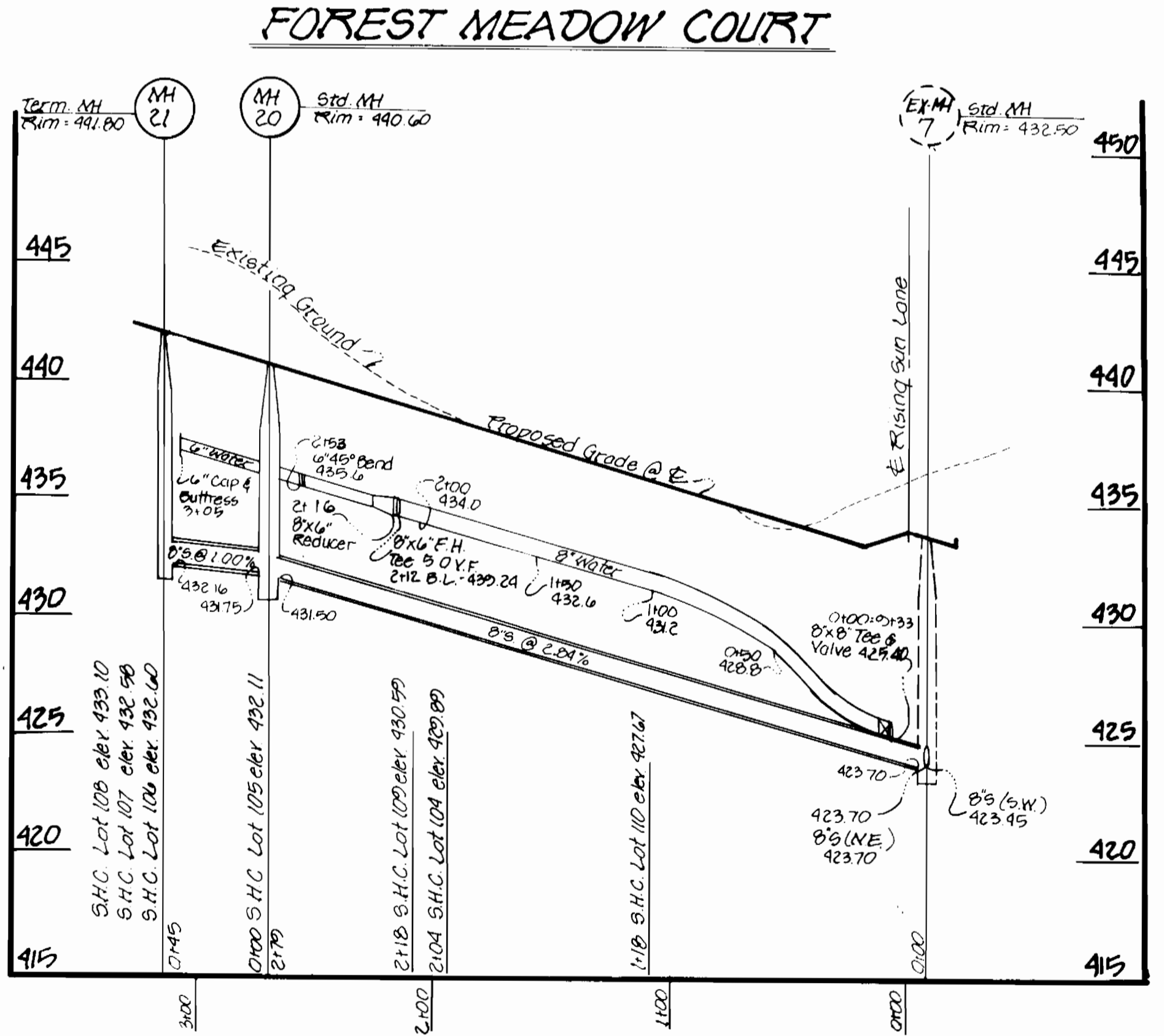
SCALE AS SHOWN
SHEET 2 OF 3

AS-BUILT 3/22/94



Lot No	Location	INV. EL. @ PROP. LINE
Manhole #7 to #20		
110	1+17R	427.05
104	2+00L	429.49
109	2+20R	429.89
105	2+79 (M20) L	431.75
Manhole #20 to #21		
106	MH 21 L	432.16
107	MH 21 L	432.16
108	MH 21 R	432.16
Manhole #22 to #23		
95	0+50L	417.88
98	0+55R	417.90
1 (Area 3)	1+57 L	421.54
44 (Area 3)	1+57 R	421.76
E.K. Manhole #7934 to #7935		
96	0+82R	400.66
97	2+35R	403.19

Number	STREET	STREET & STATION	LOCATION	RIM. ELEV.	Type	Remarks
20	Forest Meadow Ct	2+60	6'LT	440.60	Std.	G-5.11
21	Forest Meadow Ct	3+10	23'LT	441.80	Terminal	G-1.31
22	Glen Mar Dr	26+47	9'RT	427.70	Std.	G-5.11
23	Glen Mar Dr	26+90	14'RT	426.70	Std.	G-5.11
22A	"	27+51	5'RT	426.80	Std. w/ Type X Drop Conn.	G-5.11



SEWER HOUSE CONNECTION SCHEDULE FOR EXISTING SEWER HOUSE CONNECTIONS BUILT UNDER PHASE ONE CONTRACT 14-1864-D					
MANHOLE #1 TO #2			MANHOLE #7 TO #20		
89	1+00	404.42	110	1+17R	427.05
90	1+07	409.04	104	2+00L	429.49
MANHOLE #2 TO #3			MANHOLE #20 TO #21		
91	0+17L	410.73	109	2+20R	429.89
88	0+24R	410.85	105	2+79 (M20) L	431.75
92	0+67L	411.98	MANHOLE #22 TO #23		
87	0+79R	412.35	106	MH 21 L	432.16
86	1+60L	414.35	107	MH 21 L	432.16
93	1+60R	414.35	108	MH 21 R	432.16
MANHOLE #3 TO #4			MANHOLE #22 TO #23		
85	0+45R	415.53	95	0+50L	417.88
94	0+67L	415.71	98	0+55R	417.90
84	1+27R	416.16	MANHOLE #4 TO #5		
MANHOLE #5 TO #6			MANHOLE #6 TO #7		
83	0+48R	416.93	77	0+21 R	422.59
99	0+97L	417.17	76	0+99 (M17) R	423.70
82	1+32R	417.34			
100	2+20L	417.77			
81	2+18R	417.77			

PROFILES SCALE: VERTICAL : 1"=5'
HORIZONTAL: 1"=50'

DEPARTMENT OF PUBLIC WORKS HOWARD COUNTY, MARYLAND Director of Public Works: JMI 5-4-90 Chief, Bureau of Engineering: [Signature] 5/3/90 Chief, Bureau of Utilities: [Signature] 4-24-90 Chief, Land Development Division: [Signature] 5/3/20	DEWBERRY & DAVIS ARCHITECTS ENGINEERS PLANNERS SURVEYORS 200 HARRY S. TRUMAN PARKWAY, ANNAPOLIS, MD 21401 (301) 261-8707	DES: [] DRN: [] CHK: MCF Add MH 22A w/ drop connection 10/30/90 WED REVISION BY THE ENGINEERING COMPANY 7/10/90 7/13/90 DATE: []	PROFILES WATER & SEWER MAINS	WATER & SEWER PLANS MONTGOMERY MEADOWS SECTION ONE AREA TWO, PHASE TWO CONTRACT NO 14-3033-D 1st. ELECTION DISTRICT HOWARD COUNTY, MARYLAND	SCALE AS SHOWN SHEET 3 OF 3
		600' SCALE MAP NO. [] BLOCK NO. []			