

VILLAGE of LONGREACH

SECTION 3 - AREA 4

WATER AND SEWER PLAN

CONTRACT 24-3013-D

GENERAL NOTES

- APPROXIMATE LOCATION OF EXISTING MAINS ARE SHOWN. THE CONTRACTOR SHALL TAKE ALL NECESSARY PRECAUTIONS TO PROTECT EXISTING MAINS AND SERVICES AND MAINTAIN UNINTERRUPTED SUPPLY. ANY DAMAGE INCURRED SHALL BE REPAIRED IMMEDIATELY TO THE SATISFACTION OF THE ENGINEER, AT THE CONTRACTOR'S EXPENSE.
- ALL HORIZONTAL CONTROLS ARE BASED ON THE MARYLAND STATE COORDINATES.
- ALL VERTICAL CONTROLS ARE BASED ON U.S.G.S. DATUM.
- ALL PIPE ELEVATIONS SHOWN ARE INVERT ELEVATIONS.
- CLEAR ALL UTILITIES BY A MINIMUM OF 6". CLEAR ALL POLES BY 2'-0" MINIMUM OR TUNNEL AS REQUIRED. ANY COST INCURRED TO THE CONTRACTOR FOR TUNNELING OR BRACING AT POLES SHALL BE INCLUDED IN UNIT PRICES BID FOR CONSTRUCTION OF THE MAIN.
- FOR DETAILS NOT SHOWN ON THE DRAWINGS USE HOWARD COUNTY STANDARD SPECIFICATIONS WITH 1989 AMENDMENTS.
- FOR MATERIALS AND CONSTRUCTION METHODS USE HOWARD COUNTY STANDARD SPECIFICATIONS.
- CONTRACTOR SHALL LOCATE EXISTING UTILITIES OR AGENCIES AT LEAST FIVE (5) WORKING DAYS BEFORE STARTING WORK SHOWN ON THESE PLANS:

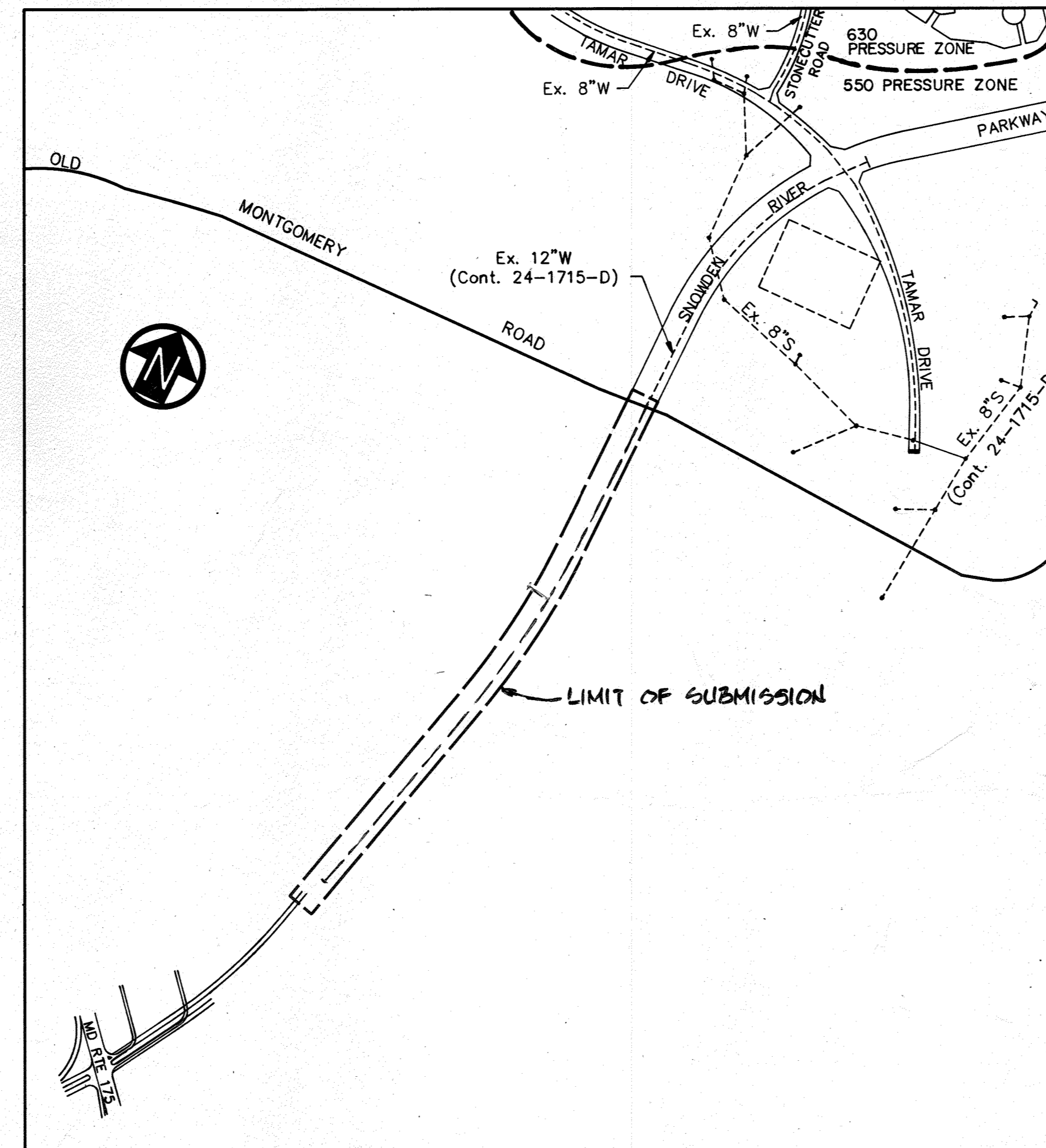
STATE HIGHWAY ADMINISTRATION - 531-5533
 BALTIMORE GAS AND ELECTRIC COMPANY - UNDERGROUND ELECTRIC DISTRIBUTION CUSTOMER SERVICE - 685-0123.
 BALTIMORE GAS AND ELECTRIC COMPANY - UNDERGROUND GAS DISTRIBUTION CUSTOMER SERVICE - 685-0123.
 ENGINEERING - "DAMAGE CONTROL" - 234-5621.
 "MISS UTILITY" - 1-559-0100.
 CHESAPEAKE AND POTOMAC (C&P) TELEPHONE COMPANY - 725-9976.
 AMERICAN TELEPHONE AND TELEGRAPH - CABLE LOCATION DIVISION - 393-3553.
 COLONIAL PIPELINE COMPANY - 781-4681.
 BUREAU OF UTILITIES HOWARD COUNTY - 313-4900

- TREES ARE TO BE PROTECTED FROM DAMAGE TO MAXIMUM EXTENT. TREES LOCATED WITHIN THE CONSTRUCTION STRIP ARE NOT TO BE REMOVED OR DAMAGED BY THE CONTRACTOR.
- CONTRACTOR SHALL REMOVE TREES, STUMPS AND ROOTS ALONG LINE OF EXCAVATION AS DIRECTED BY THE ENGINEER. PAYMENT FOR SUCH REMOVAL SHALL BE INCLUDED IN THE UNIT PRICE BID FOR CONSTRUCTION OF THE MAIN.
- PLACE REGULATION "MEN WORKING" AND WARNING SIGNS AS REQUIRED TO COMPLY WITH MARYLAND STATE HIGHWAY ADMINISTRATION MANUAL OF TRAFFIC CONTROL FOR HIGHWAY CONSTRUCTION AND MAINTENANCE OPERATIONS.
- ALL WATER MAINS SHALL BE D.I.P. CLASS 52 UNLESS OTHERWISE NOTED.
- TOP OF ALL WATER MAINS SHALL HAVE MINIMUM OF 4' COVER UNLESS OTHERWISE NOTED.
- VALVES ADJACENT TO TEES SHALL BE STRAPPED TO TEES.
- BLOCK ALL FITTINGS WITH CONCRETE.
- BURY LINE ELEVATIONS ON FIRE HYDRANTS SHALL BE SET TO THE ELEVATIONS SHOWN ON THE DRAWINGS. ALL FIRE HYDRANTS SHALL BE RESTRAINED AND BUTTRESSED WITH CONCRETE IN ACCORDANCE WITH STANDARD DETAILS. SOIL AROUND THE FIRE HYDRANT TO BE COMPACTED IN ACCORDANCE WITH SECTION 1005 OF THE STANDARD SPECIFICATIONS.
- THE CONTRACTOR SHALL NOT OPERATE ANY WATER VALVES ON THE EXISTING SYSTEM.
- ORIGINAL GROUND OVER WATER AND SEWER WAS TAKEN FROM AERIAL PHOTOGRAPHY PREPARED BY MAPS INC., AND BY FIELD SURVEY IN AUGUST, 1987 BY PURDUM & JESCHKE.
- ALL D.I.P. FITTINGS SHALL BE IN ACCORDANCE WITH AWWA SPECIFICATION C-153 DUCTILE IRON COMPACT FITTINGS, 3-INCH THROUGH 12-INCH FOR WATER AND OTHER LIQUIDS.
- SPECIAL FIRE HYDRANT SETTING SHALL BE USED IN CASES OF FIRE HYDRANT DEPTH IN EXCESS OF 8 VERTICAL FEET (SEE DETAIL - SHEET 3 OF 3).

CONSTRUCTION SEQUENCE SEDIMENT CONTROL PROCEDURES

- OBTAIN SEDIMENT CONTROL PERMIT (ARTICLE 15.05-3).
- CONSTRUCT DIKE AND SILT FENCE STRUCTURES.
- CLEAR, GRUB AND STRIP AS REQUIRED FOR WATER CONSTRUCTION -- PROTECT STREAMS FROM EROSION OF STORED TOPSOIL.
- CONSTRUCT WATER PIPE LINES.
- RESTORE EROSION CONTROL STRUCTURES DISTURBED BY WATER CONSTRUCTION.
- STABILIZE DISTURBED AREAS AS CONSTRUCTION PROGRESSES WITH TEMPORARY SEEDING AND MULCHING (OR PERMANENT RESTORATION).
- COMPLETE PERMANENT RESTORATION.
- REMOVE SEDIMENT CONTROL STRUCTURES WHEN DIRECTED.

NOTE: SEDIMENT CONTROL MEASURES TO BE IMPLEMENTED IN ACCORDANCE WITH VOL. 4 SECT. 219 OF THE HOWARD CO. DESIGN MANUAL AND THIS PLAN. F-90-53.



SITE PLAN
SCALE: 1 = 600'

INDEX OF SHEETS	
SHEET NO.	DESCRIPTION
1	TITLE SHEET
2	WATER PLAN AND PROFILE - SNOWDEN RIVER PKWY. STA.14+93 TO 31+00, SEWER PLAN
3	WATER PLAN AND PROFILE - SNOWDEN RIVER PKWY. STA.31+00 TO 45+56, SEWER PROFILE

QUANTITIES					
ITEM	UNIT	EST'D	AS BUILT	MATERIAL/SUPPLIER	
12" D.I.P. WATER LINE	L.F.	3158	3102.5	GRIFFIN	
8" D.I.P. WATER LINE	L.F.	170	151.8	GRIFFIN	
12" CONTROL VALVE	EA.	2	2	A-1 PIPE	
FIRE HYDRANT	EA.	5	5	A-1 PIPE	
12" X 12" CROSS	EA.	1	1	U.S. PIPE AND FOUNDRY	
12" X 6" TEE	EA.	9	5	U.S. PIPE AND FOUNDRY	
8" VALVE	EA.	3	3	A-1 PIPE	
6" VALVE	EA.	9	5	A-1 PIPE	
8" X 6" REDUCER	EA.	1		U.S. PIPE AND FOUNDRY	
8" D.I.P. SEWER LINE	L.F.	386		U.S. PIPE AND FOUNDRY	
4" WATERTIGHT SEWER MH.	EA.	4	4	ATLANTIC	
12" X 8" CROSS	EA.	1	1	U.S. PIPE AND FOUNDRY	

REVIEWED FOR HOWARD SOIL CONSERVATION DISTRICT AND MEETS TECHNICAL REQUIREMENT.

James M. Helm / *JMH* 3/16/90
U.S. SOIL CONSERVATION SERVICE DATE

THIS DEVELOPMENT PLAN IS APPROVED FOR SOIL EROSION AND SEDIMENT CONTROL BY THE HOWARD COUNTY SOIL CONSERVATION DISTRICT.

John R. Robertson 3/16/90
HOWARD S.C.D. DATE

WASTE WATER DISPOSAL: SAVAGE
DRAINAGE AREA: MIDDLE PATUXENT
NO. OF SHC = 0
NO. OF WHC = 0
NO. OF LOTS = 0

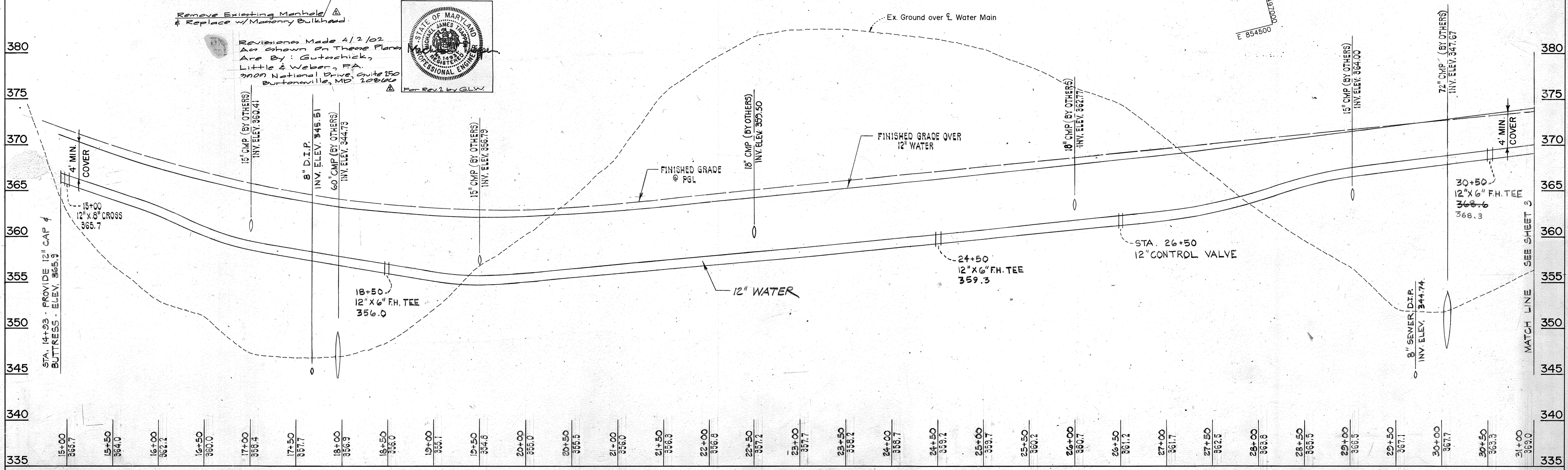
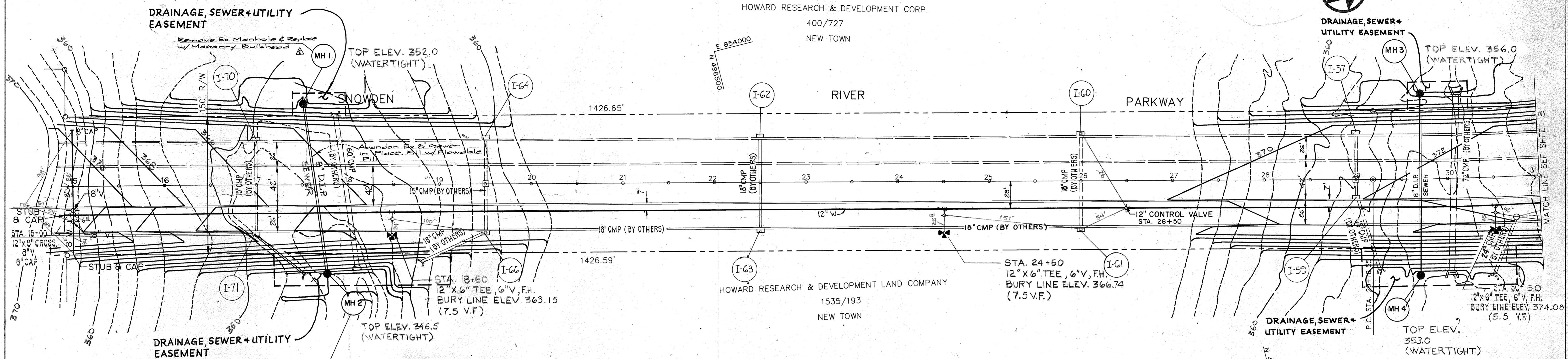
WATER & SEWER CODE:
COUNTY USE:
WATER: E07
SEWER: 3490000

SNOWDEN RIVER PARKWAY
WATER AND SEWER
EXTENSION

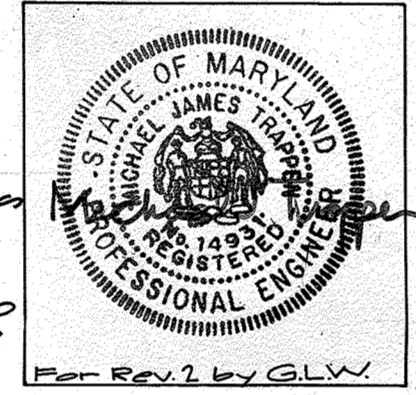
PURDUM & JESCHKE CONSULTING ENGINEERS AND LAND SURVEYORS 1029 North Calvert Street Baltimore, Maryland 21202 (301)837-0194	OWNER/DEVELOPER THE HOWARD RESEARCH & DEVELOPMENT LAND COMPANY THE ROUSE BUILDING 10275 LITTLE PATUXENT PARKWAY COLUMBIA, MD. 21044	DEPARTMENT OF PUBLIC WORKS HOWARD COUNTY, MARYLAND		11/17/92 AS-BUILT 5/4/92 REVISED ROADWAY AND STORMDRAIN ALIGNMENT 7/3/90 COMMENTS AS PER DFW LTR. 6/2/90	CONTRACT NO. 24-3013-D VILLAGE OF LONGREACH SECTION 3 AREA 4 - WATER AND SEWER PLAN TITLE SHEET PARCELS: 27, 50, 229, 242, 254, 255 & 448 REFERENCE: S87-46 SIXTH ELECTION DISTRICT HOWARD COUNTY, MD. DATE: JANUARY 15, 1990 SCALE: NOTED	SHEET 1 OF 3 DES: GDT DRAWN: REC CHK: RHB
		<i>James M. Helm</i> 3/19/90 DIRECTOR OF PUBLIC WORKS DATE	<i>Robert M. Beisinger</i> 3-12-90 CHIEF, BUREAU OF UTILITIES DATE			

AS-BUILT

STRUCTURE NO.	STA.	OFFSET	RIM ELEV.	INV. IN	INV. OUT	REMARKS
MH 1	17+52	88.36' LT.	352.0	—	343.29	WATERTIGHT
MH 2	17+77	98.66' RT.	346.5	337.76	—	"
MH 3	29+70	94.34' LT.	356.0	—	347.08	"
MH 4	29+70	105.11' RT.	353.0	343.09	—	WATERTIGHT



Revisions Made 4/2/92
As Shown On These Plans
Are By: Gutschick,
Little & Weber, PA
3909 National Drive, Suite 150
Burtonsville, MD 20866



DEPARTMENT OF PUBLIC WORKS
HOWARD COUNTY, MARYLAND

James W. Gutschick 3/19/90
DIRECTOR OF PUBLIC WORKS DATE

Robert B. ... 3-12-90
CHIEF, BUREAU OF UTILITIES DATE

... 3-16-90
CHIEF, LAND DEVELOPMENT DIV. DATE

PURDUM & JESCHKE
CONSULTING ENGINEERS
AND LAND SURVEYORS

1029 N. CALVERT ST.
BALTIMORE, MD. 21202

DES: REC, GDT			
DRN: REC			
CHK: RHB	GLW	Abandon Ex. 8" MH 1 to MH 2	4-2-92
DATE:	MM	AS-BUILT	11-17-92
BY	NO.	REVISION	DATE

SEWER PLAN
WATER MAIN
PLAN AND PROFILE

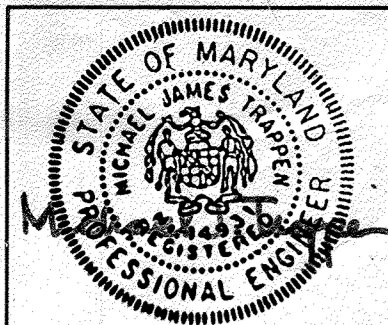
SCALE MAP NO. BLOCK NO.

CONTRACT NO. 24-3013-D
LONGREACH - SECTION 3, AREA 4

PARCELS 27, 50, 229, 254, 255, 492 & 498
TAX MAP 36 & 37
DATE: JANUARY 15, 1990

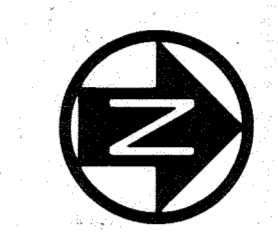
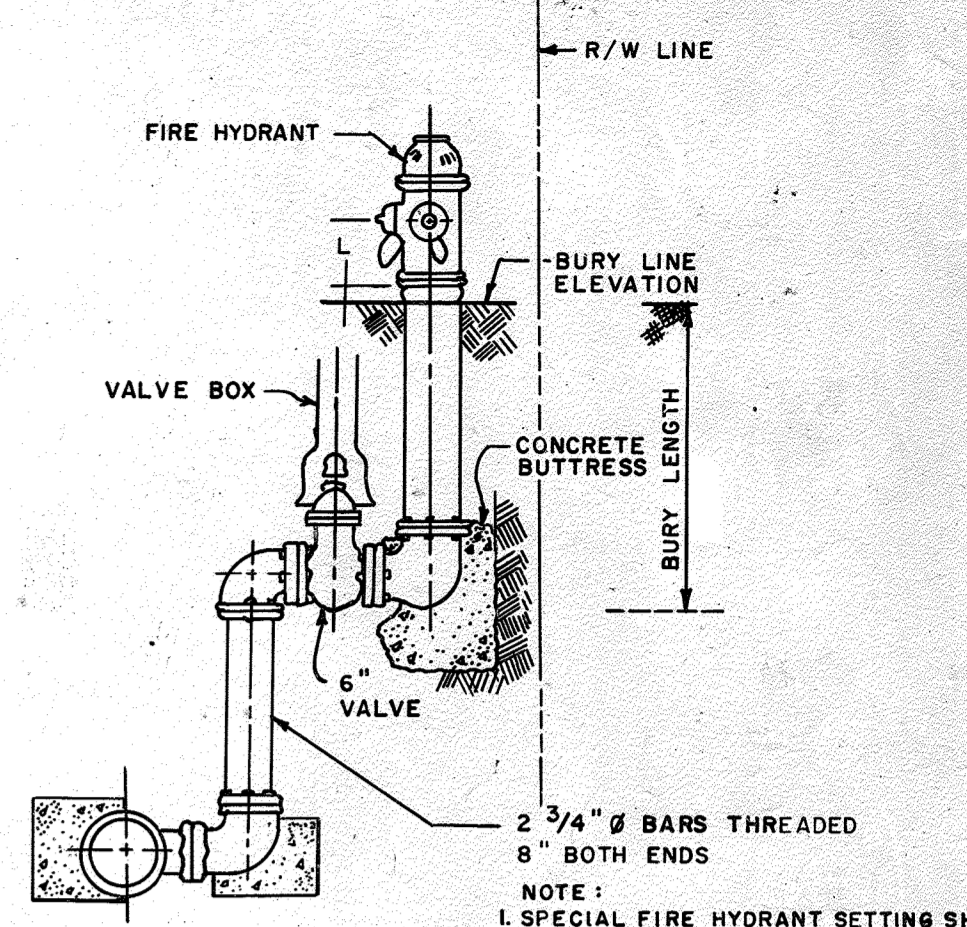
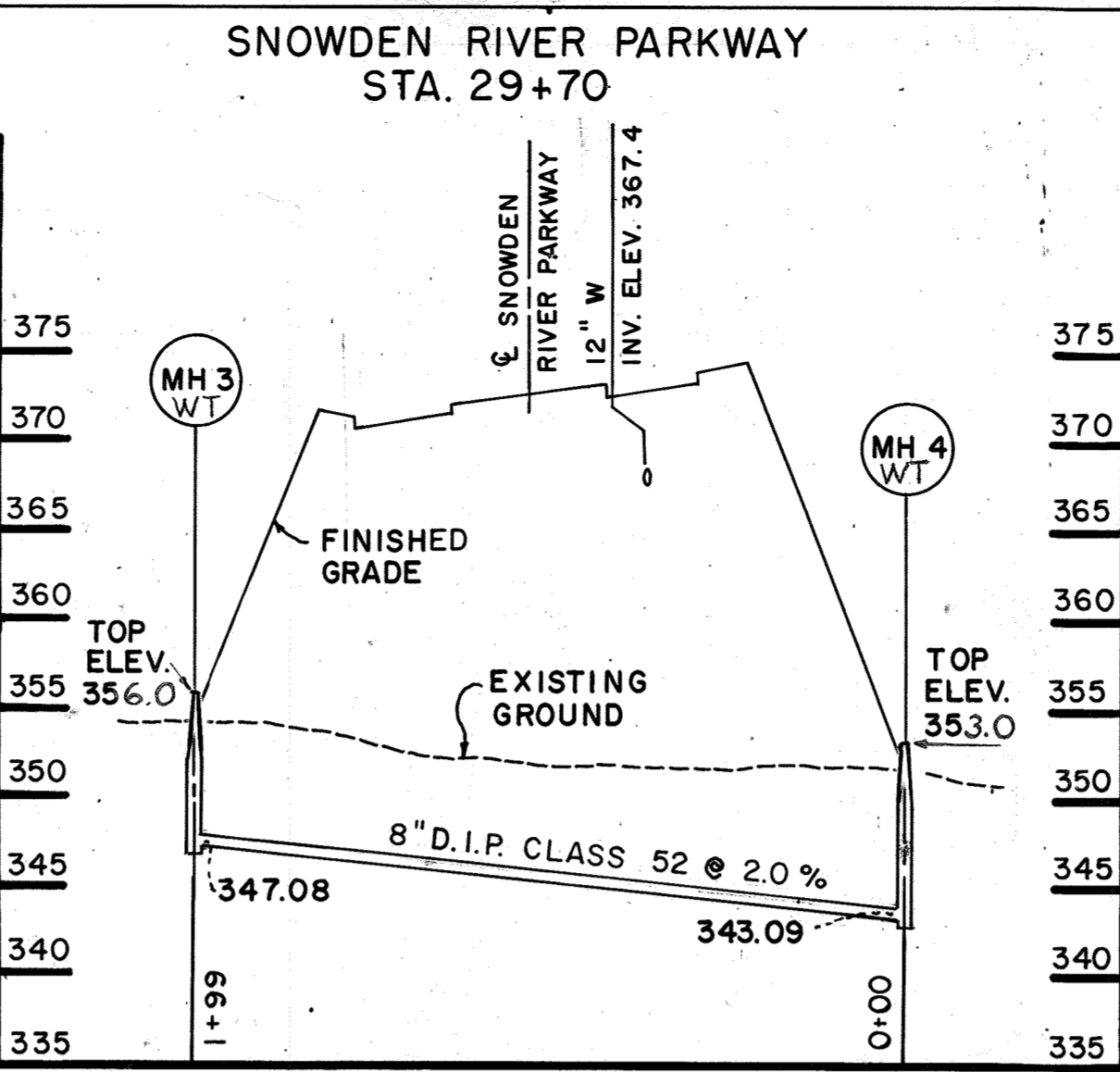
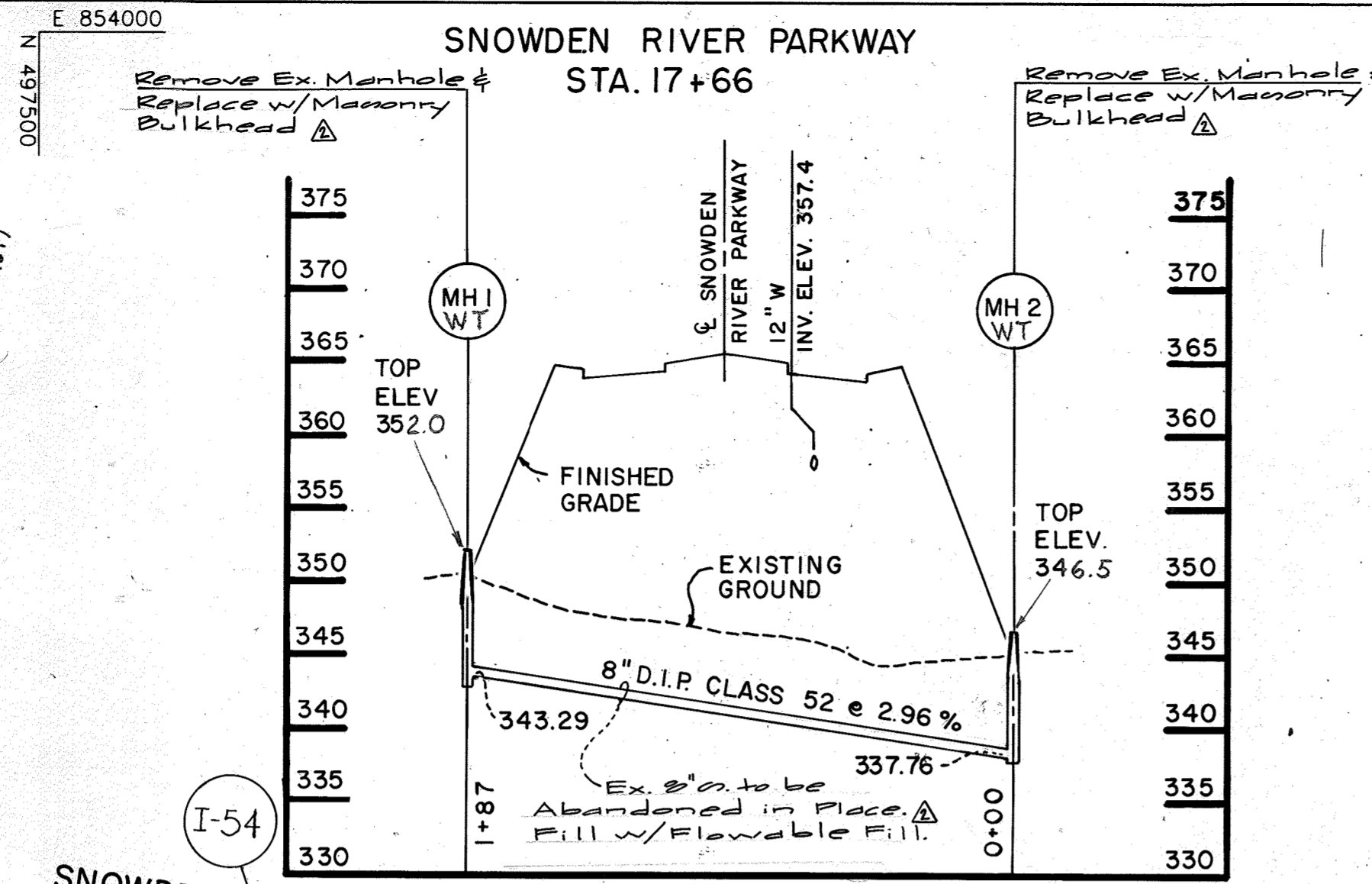
SCALE HOR: 1"=50'
VERT: 1"=5'

SHEET 2 OF 3
REFERENCE: S87-46
HOWARD COUNTY, MD

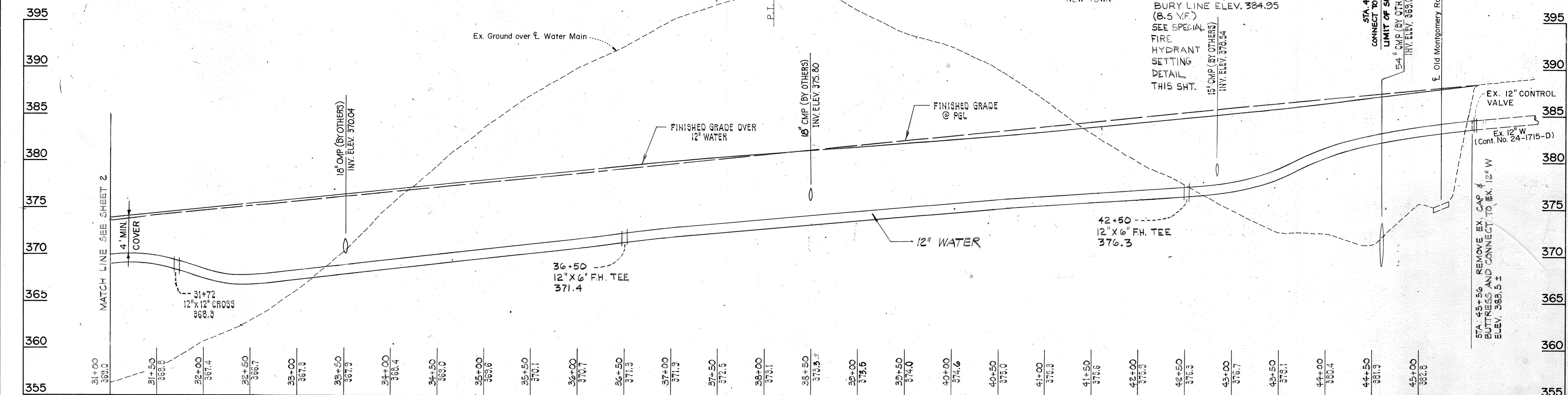
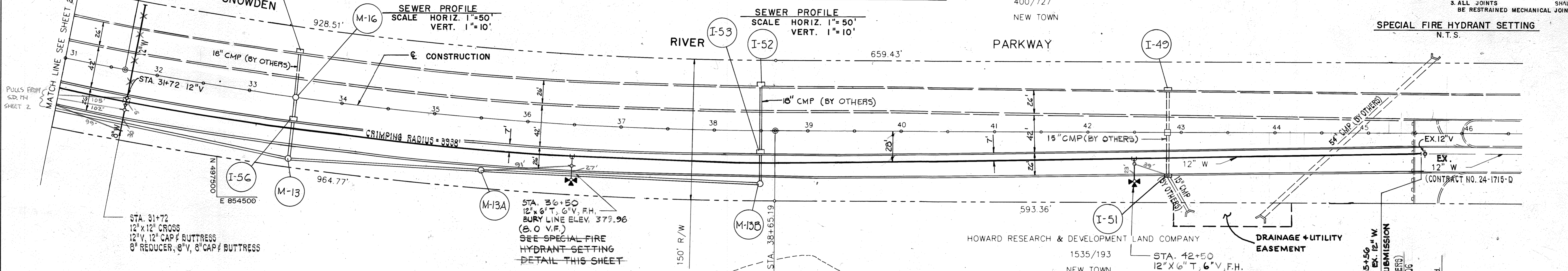


For Rev. 2 By GLW

Revisions Made 4/12/92 As Shown On These Plans Are By: Guttschick, Little & Weber, P.A. 2000 National Drive, Suite 2500 Burtonville, MD 20884



HOWARD RESEARCH & DEVELOPMENT CORP.
400/727
NEW TOWN



DEPARTMENT OF PUBLIC WORKS
HOWARD COUNTY, MARYLAND

James Taylor 3/19/90
DIRECTOR OF PUBLIC WORKS DATE

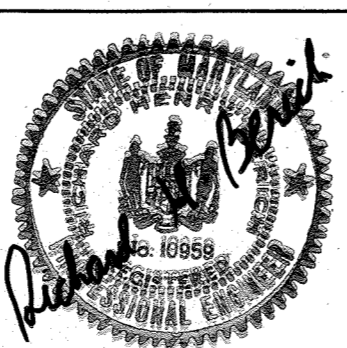
Michael James Taylor 3-12-90
CHIEF, BUREAU OF UTILITIES DATE

Michael James Taylor 3-16-90
CHIEF, BUREAU OF ENGINEERING DATE

Michael James Taylor 3/16/90
CHIEF, LAND DEVELOPMENT DIV. DATE

PURDUM & JESCHKE
CONSULTING ENGINEERS
AND LAND SURVEYORS

1029 N. CALVERT ST.
BALTIMORE, MD. 21202



DES:	REC, GDT			
DRN:	REC			
CHK:	RHB	GLW 2	Abandon Ex. 2\"/>	
DATE:				
BY:	NO.			
REVISION:				
DATE:				

SEWER PROFILE
WATER MAIN
PLAN AND PROFILE

SCALE MAP NO. BLOCK NO.

CONTRACT NO. 24-3013-D
LONGREACH - SECTION 3, AREA 4

PARCELS 27, 50, 229, 254, 255, 492 & 498
TAX MAP 36 & 37
DATE: JANUARY 15, 1990

REFERENCE: S87-46
HOWARD COUNTY, MD

SCALE
HOR: 1"=50'
VERT: 1"=5'

SHEET
3 OF 3

AS-BUILT