

DORSEY HALL

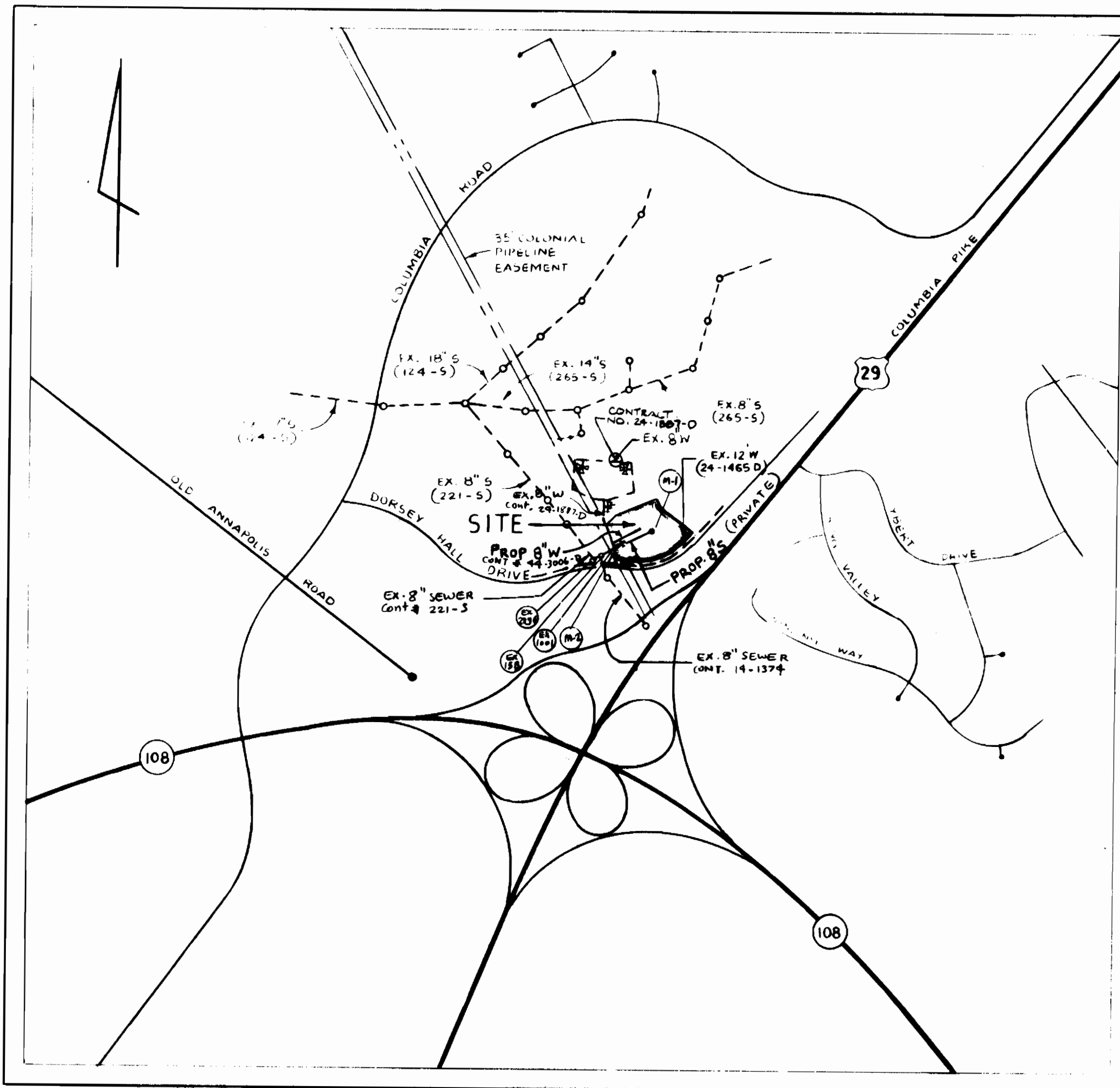
HOWARD COUNTY, MARYLAND

DEPARTMENT OF PUBLIC WORKS

GENERAL NOTES

1. ALL WATER MAIN TO BE D.I.P. UNLESS OTHERWISE SHOWN. ALL FITTINGS FOR THE 8" MAIN TO BE D.I.P. COMPACT FITTINGS (REF. SPEC. # 24)
2. TOP OF ALL WATER MAINS TO HAVE A MINIMUM OF 3.5 FT. COVER UNLESS OTHERWISE NOTED
3. VALVES ADJACENT TO TEES SHALL BE STRAPPED TO TEES.
4. BLOCK ALL FITTINGS WITH CONCRETE. SEE STANDARDS BOUND IN SPECIFICATIONS.
5. BURY LINE ELEVATIONS ON FIRE HYDRANTS SHALL BE SET TO THE ELEVATIONS SHOWN ON THE DRAWINGS. ALL FIRE HYDRANTS SHALL BE STRAPPED AND BUSHED WITH CONCRETE IN ACCORDANCE WITH STANDARD DETAILS. SOIL AROUND THE FIRE HYDRANT TO BE COMPACTED IN ACCORDANCE WITH SECTION 10.05 & 10.08 OF THE STANDARD SPECIFICATIONS.
6. ALL SEWER MAINS SHALL BE C.S.P.X., R.C.S.P., V.C.P.X. OR A.C.P. CLASS 2400 UNLESS OTHERWISE NOTED.
7. THE CONTRACTOR SHALL PROVIDE A JOINT IN ALL SEWER MAINS WITHIN 2' 0" OF EXTERIOR MANHOLE WALL.
8. ALL MANHOLES SHALL BE 4' 0" INSIDE DIAMETER, UNLESS OTHERWISE NOTED.
9. APPROXIMATE LOCATIONS OF EXISTING MAINS ARE SHOWN. THE CONTRACTOR SHALL TAKE ALL NECESSARY PRECAUTIONS TO PROTECT EXISTING MAINS AND SERVICES, AND MAINTAIN UNINTERRUPTED SUPPLY. ANY DAMAGE INCURRED SHALL BE REPAIRED IMMEDIATELY TO THE SATISFACTION OF THE ENGINEER AT THE CONTRACTOR'S EXPENSE.
10. ALL HORIZONTAL CONTROLS ARE BASED ON MARYLAND STATE COORDINATES.
11. ALL VERTICAL CONTROLS ARE BASED ON U.S.G.S. DATUM.
12. ALL PIPE ELEVATIONS SHOWN ARE INVERT ELEVATIONS.
13. CLEAR ALL UTILITIES BY A MINIMUM OF 6". CLEAR ALL POLES BY 2' 0" MINIMUM OR TUNNEL AS REQUIRED. ANY COST INCURRED TO THE CONTRACTOR FOR TUNNELING OR BRACING AT POLES SHALL BE INCLUDED IN UNIT PRICES BID FOR CONSTRUCTION OF MAIN.
14. FOR DETAILS NOT SHOWN ON DRAWINGS USE HOWARD COUNTY STANDARD DETAILS.
15. CONTRACTOR SHALL LOCATE EXISTING UTILITIES A MINIMUM OF TWO (2) WELKS IN ADVANCE OF CONSTRUCTION OPERATIONS IN THE VICINITY OF PROPOSED UTILITIES AT HIS OWN EXPENSE.
16. TREES ARE TO BE PROTECTED FROM DAMAGE TO MAXIMUM EXTENT. TREES LOCATED WITHIN THE CONSTRUCTIONS TRIP ARE NOT TO BE REMOVED OR DAMAGED BY THE CONTRACTOR.
17. CONTRACTOR SHALL REMOVE TREES, STUMPS, AND ROOTS ALONG LINE OF EXCAVATION AS DIRECTED BY ENGINEER. PAYMENT FOR SUCH REMOVAL SHALL BE INCLUDED IN THE UNIT PRICE BID FOR CONSTRUCTION OF THE MAIN.
18. PLACE REGULATION "MEN WORKING" AND WARNING SIGNS AS REQUIRED TO COMPLY WITH MARYLAND STATE HIGHWAY ADMINISTRATION MANUAL OF TRAFFIC CONTROL FOR HIGHWAY CONSTRUCTION AND MAINTENANCE OPERATIONS.
19. CONTRACTOR SHALL NOTIFY THE FOLLOWING UTILITIES OR AGENCIES AT LEAST FIVE (5) WORKING DAYS BEFORE STARTING WORK SHOWN ON THESE PLANS:
 - STATE HIGHWAY ADMINISTRATION - 531-5533
 - BALTIMORE GAS AND ELECTRIC COMPANY - UNDERGROUND ELECTRIC DISTRIBUTION (CUSTOMER SERVICE 685-8123)
 - ENGINEERING, "DAMAGE CONTROL" - 234-5821
 - BALTIMORE GAS AND ELECTRIC COMPANY - UNDERGROUND GAS DISTRIBUTION (CUSTOMER SERVICE 685-8123)
 - "MISS. UTILITY" - 1-553-8188
 - CHESAPEAKE & POTOMAC (C&P) TELEPHONE CO. - 725-9976
 - AMERICAN TELEPHONE AND TELEGRAPH - CABLE LOCATION DIVISION - 393-3553
 - COLONIAL PIPELINE COMPANY - 795-1398
 - BUREAU OF UTILITIES HOWARD COUNTY - 992-2366
20. FOR MATERIALS AND CONSTRUCTION METHODS USE HOWARD COUNTY STANDARD SPECIFICATIONS.
21. ALL WATER HOUSE CONNECTIONS SHALL BE **INSIDE METER SETTING**.
22. THE CONTRACTOR SHALL NOT OPERATE ANY WATER MAIN VALVES ON THE EXISTING SYSTEM.
23. WATER MAIN AND WATER HOUSE CONNECTION LINES MUST HAVE A MINIMUM OF ONE FOOT SEPARATION FROM THE SANITARY SEWER AND SEWER HOUSE CONNECTIONS AS THEY CROSS EXCEPT AT CROSSINGS. WATER AND SEWER LINES SHALL HAVE A MINIMUM HORIZONTAL SEPARATION OF 10'.
24. ALL D.I.P. FITTINGS SHALL BE IN COMPLIANCE WITH ALL THE SPECIFICATIONS AND SHALL BE INSTALLED IN ACCORDANCE WITH THE STANDARD DETAILS. THE CONTRACTOR SHALL BE RESPONSIBLE FOR ALL OTHER UTILITIES.
25. ALL MANHOLES DESIGNATED "W.T." IN PROFILE SHALL HAVE WATERTIGHT FRAMES & COVERS STANDARD DETAIL # 5-42 WHERE W.T. MANHOLE FRAME & COVER REQUIRED. SET UP TOP OF FRAME 1' 6" ALONG FINISHED GRADE UNLESS OTHERWISE NOTED.
26. "For materials and construction method, use Howard County Standard Specification and Howard County Design Manual Volume II 1989 Amendments. The contractor shall have Volume II 1989 Amendments on the job site."

QUANTITIES				
ITEM	UNIT	ESTIMATED	AS BUILT	MATERIAL/SUPPLIER
8" Sewer	L.F.	-	160'	JM MANUFACTURING
Manhole	EA.	-	2	ATLANTIC CONCRETE PRODUCTS, INC.
8" Water	L.F.	75	75	ATLANTIC STATES
6" Water	L.F.	100 100	100	ATLANTIC STATES
4" Valve	EA.	0	3	MUELLER CO.
8" Valve	EA.	0	3	MUELLER CO.
6" Valve	EA.	1	1	MUELLER CO.
4" Water	L.F.	30	38.5	ATLANTIC STATES
Fire Hydrant	EA.	1	1	MUELLER CO.
6" x 8" Hydrant Saddle And Valve	EA.	1	1	MUELLER CO.
8" x 6" REDUCER	EA.		1	TYLER CO.
4" CAP	EA.		3	TYLER CO.



TYPE OF BUILDINGS	OFFICE CONDOMINIUMS
NUMBER OF LOTS	1
NUMBER OF WATER HOUSE CONNECTIONS	3
NUMBER OF SEWER HOUSE CONNECTIONS	7
DRAINAGE AREA	LITTLE PATUENT
TREATMENT PLANT FOR SEWER: PATAPSCO (VIA RTA, 108 PUMPING STATION)	

LOCATION MAP
SCALE: 1" = 600'

Water and Sewer Code
(County Use)
Sewer No. 5750000
Water No. 608

DESIGNER'S RESPONSIBILITY: THE CONTRACTOR SHALL BE RESPONSIBLE FOR OBTAINING ALL NECESSARY PERMITS AND COMPLIANCE WITH ARTICLE 29 OF THE HOWARD COUNTY DESIGN MANUAL AND STANDARDS SPECIFICATIONS FOR CONSTRUCTION AND SEDIMENT CONTROL IN DEVELOPING AREAS.

SDP # 90-65

REVIEWED FOR HOWARD COUNTY SOIL CONSERVATION DISTRICT AND MEETS TECHNICAL REQUIREMENTS

[Signature] 8/9/90
Soil Conservation Service Date

THIS DEVELOPMENT IS APPROVED FOR EROSION AND SEDIMENT CONTROL BY THE HOWARD COUNTY SOIL CONSERVATION DISTRICT

[Signature] 8/8/90
Howard Soil Conservation District Date

REFERENCE:
PLAN # 8199
SDP-90-65

APPROVED: HOWARD COUNTY DEPARTMENT OF PUBLIC WORKS

Chief, Land Development Division Date

Chief, Bureau of Utilities Date

DEPARTMENT OF PUBLIC WORKS
HOWARD COUNTY, MARYLAND

[Signature] 8/13/90
DIRECTOR OF PUBLIC WORKS DATE

[Signature] 8-7-90
CHIEF, BUREAU OF UTILITIES DATE

[Signature] 8/13/90
CHIEF, LAND DEVELOPMENT DIVISION DATE

ENGINEERING TECHNOLOGIES
ASSOCIATES, INC.

ENGINEERS - PLANNERS - SURVEYORS

3458 ELLICOTT CENTER DRIVE SUITE 101
ELLCOTT CITY, MARYLAND 21043
(301) 481-9920



DESIGNED BY: JVP
DRAWN BY: AMC
CHECKED BY: AHJ
DATE: 9/90

BY: WHN
NO: 4" W, 4" V, Remove Blw - CPP
REVISION

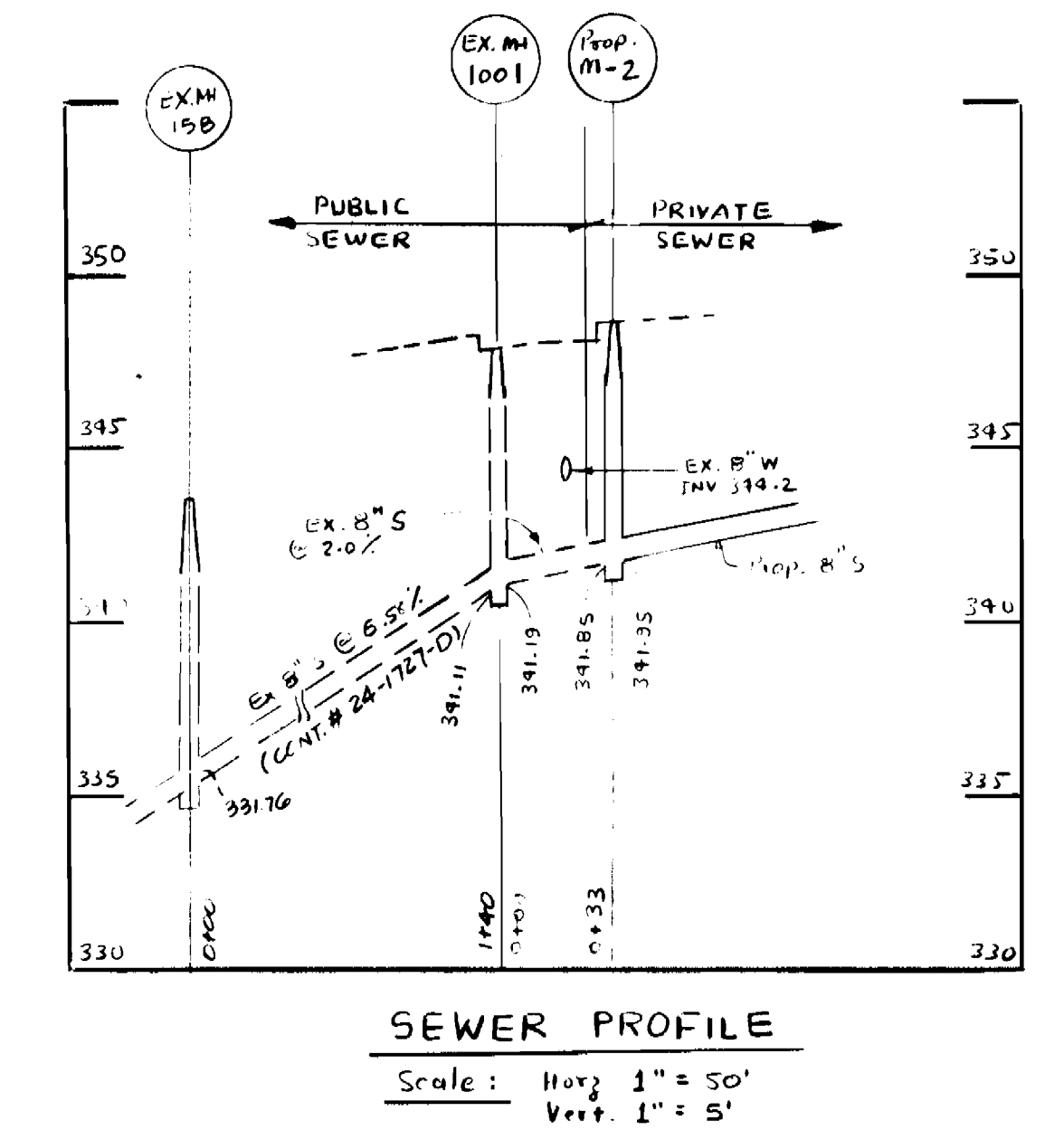
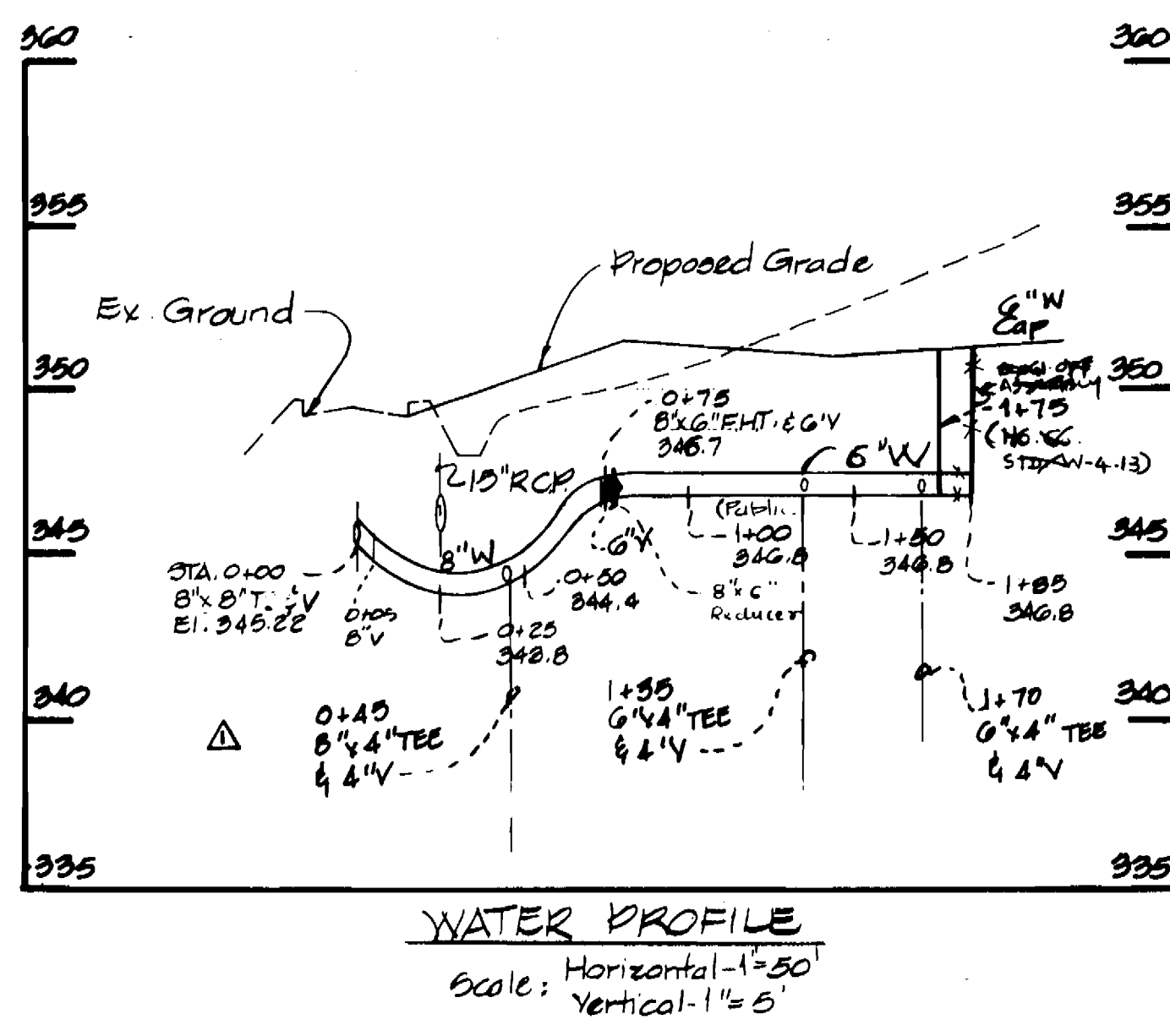
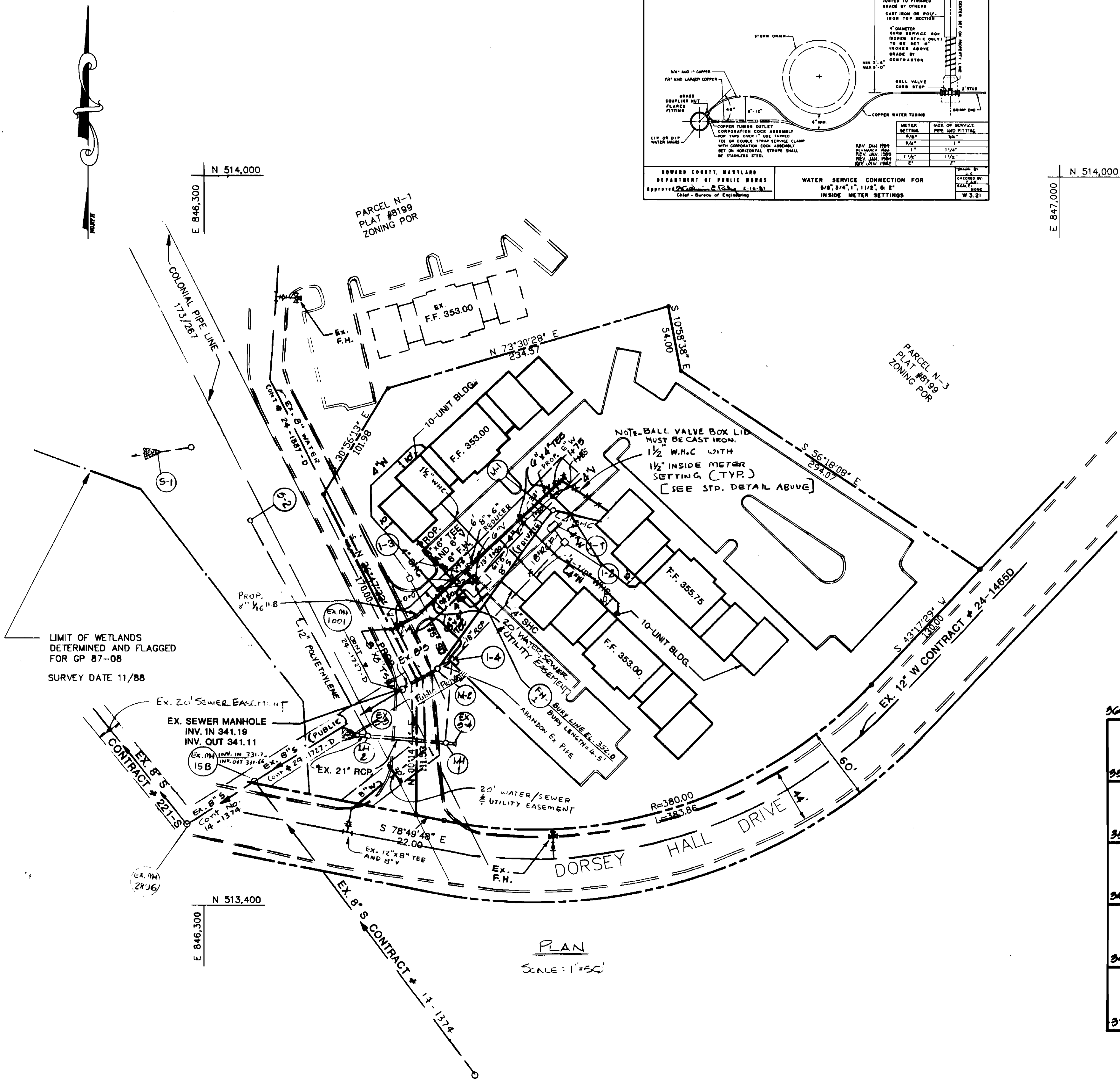
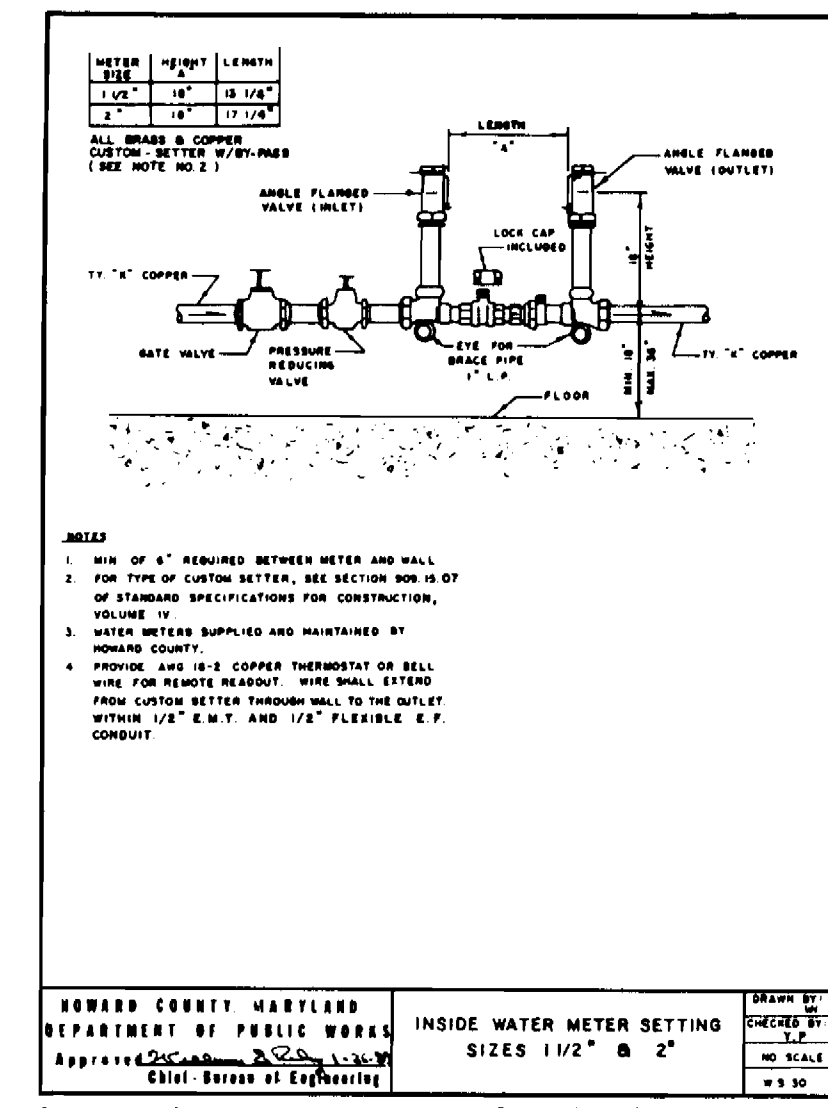
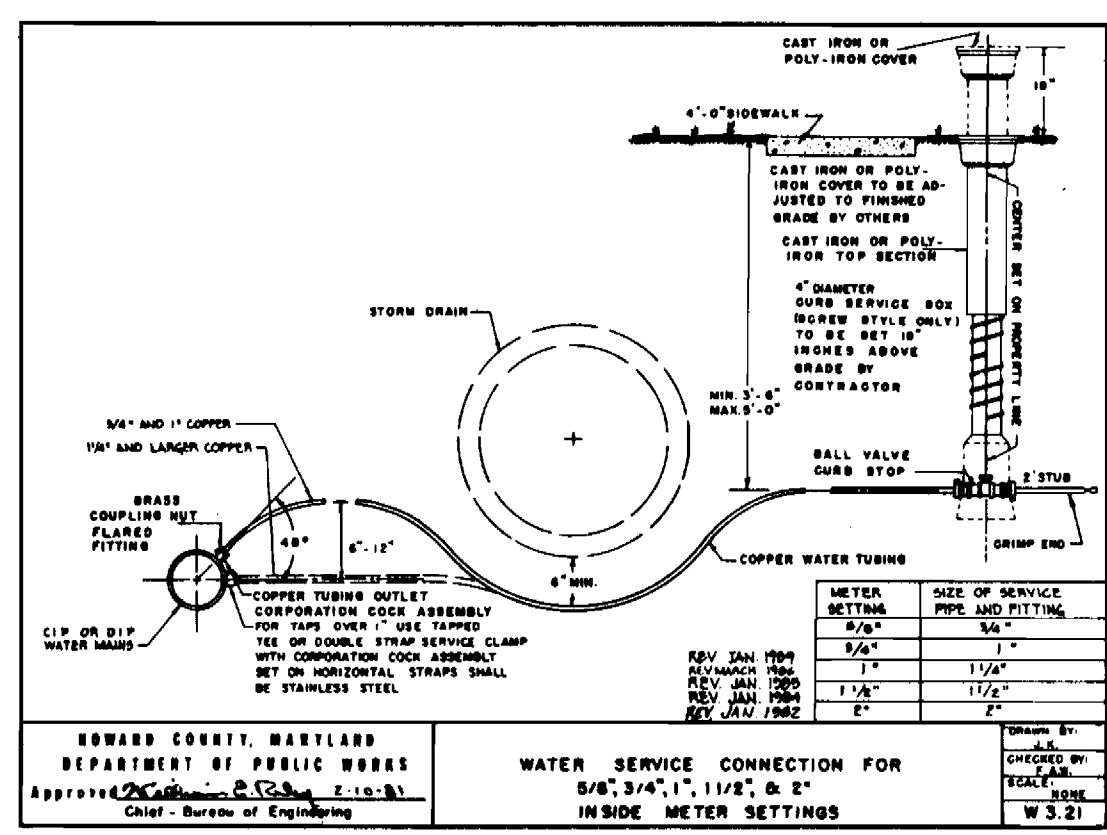
TITLE SHEET
WATER MAINS

DORSEY HALL
(OFFICE CONDOMINIUMS)
SECTION - 2 AREA - 5 PARCEL N-2
2ND ELECTION DISTRICT, HOWARD COUNTY, MARYLAND
CONTRACT NO. 44-3006-D

SCALE AS SHOWN
SHEET 1 OF 2
AS-BUILT

WATER & SEWER AS-BUILT

3/18/94



DEPARTMENT OF PUBLIC WORKS
HOWARD COUNTY, MARYLAND

8/13/90
DATE

8-7-90
DATE

ENGINEERING TECHNOLOGIES ASSOCIATES, INC.
ENGINEERS - PLANNERS - SURVEYORS

3400 ELLCOTT CENTER DRIVE SUITE 101
ELLCOTT CITY, MARYLAND 21043
(301) 481-0920

DES: JVP
DRN: RMG
CHK: RMJ
DATE: 9/90

WHN: Δ
BY NO. 4" W, 4" V's, remove blow-off
REVISION

WATER MAINS

600 SCALE MAP NO. _____ BLOCK NO. _____

SCALE AS SHOWN

SHEET 2 OF 2

DORSEY HALL
SECTION - 2 (OFFICE CONDOMINIUMS)
AREA - 5 PARCEL N-2
2ND ELECTION DISTRICT, HOWARD COUNTY, MARYLAND
CONTRACT NO. 44-3006-D