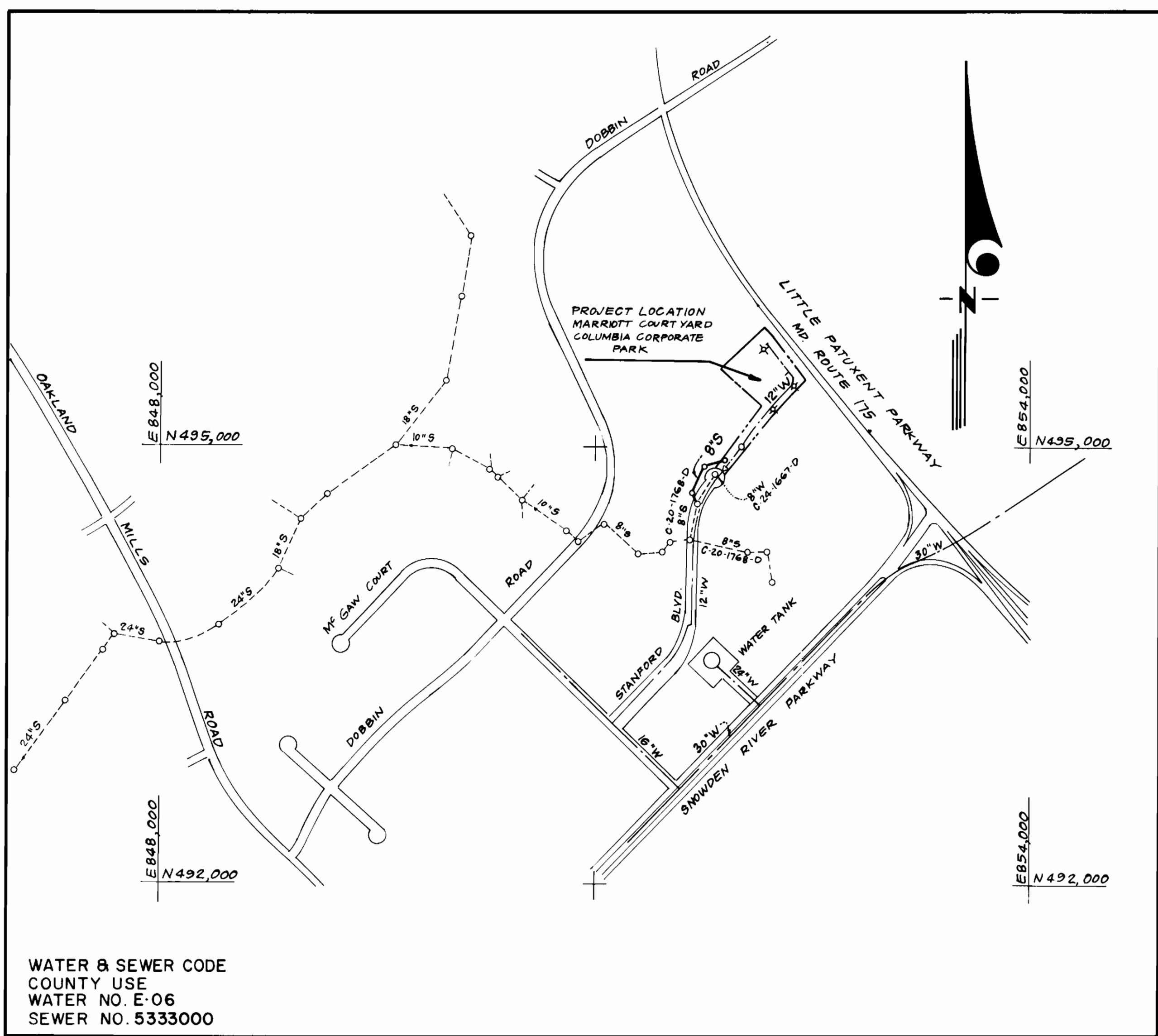


TYPE OF BUILDING	HOTEL
NO. OF LOTS	ONE
NO. OF WHC's	ONE
NO. OF SHC's	ONE
DRAINAGE AREA	LITTLE PATUXENT



WATER & SEWER CODE
 COUNTY USE
 WATER NO. E:06
 SEWER NO. 5333000

VICINITY MAP
 SCALE: 1" = 600'

CONTRACT NO. 24-1982-D
 COLUMBIA CORPORATE PARK, PARCEL "A-15"
 A RESUBDIVISION OF PARCEL "A"
 SIELING INDUSTRIAL CENTER
 SECTION I AREA I
 HOWARD COUNTY, MARYLAND
 DEPARTMENT OF PUBLIC WORKS

GENERAL NOTES

- Approximate location of existing mains are shown. The contractor shall take all necessary precautions to protect existing mains and services and maintain uninterrupted supply. Any damage incurred shall be repaired immediately to the satisfaction of the Inspector, at the contractor's expense.
- All horizontal controls are based on Maryland State Coordinates.
- All vertical controls are based on U.S.G.S. Datum.
- All pipe elevations shown are invert elevations.
- Clear all utilities by a minimum of 6" clear all poles by 2'-0" minimum or tunnel as required. Any cost incurred to the contractor for tunneling or bracing at poles shall be included in unit prices bid for excavation and backfill.
- For details not shown on the drawings use Howard County Standard Specifications and Howard County Design Manual, Volume IV, 1989 Amendments. The Contractor shall have Volume IV, 1989 Amended, on the job site.
- Contractor shall locate existing utilities a minimum of two (2) weeks in advance of construction operations in the vicinity of proposed utilities at his own expense.
- Contractor shall notify the following utilities or agencies at least five (5) working days before starting work shown on these plans.
 - State Highway Administration - 531-5533
 - Baltimore Gas & Electric Company - Underground Damage Control - 859-9004
 - Baltimore Gas & Electric Company - Contractor Services - 850-4620
 - Baltimore Gas & Electric Company - Trouble Shooting - 298-9001
 - "Miss Utility" - 1-800-257-7777
 - Chesapeake & Potomac (C & P) Telephone Company - 1-800-257-7777
 - Bureau of Utilities Howard County - 992-2366
 - Colonial Pipeline Company - 795-1390
- Trees are to be protected from damage to maximum extent. Trees located within the construction strip are not to be removed or damaged by the contractor.
- Contractor shall remove trees, stumps, and roots along line of excavation as directed by the Inspector. Payment for such removal shall be included in the unit price bid for excavation and backfill.
- Place regulation "Men Working" and warning signs as required to comply with Maryland State Highway Administration Manual of Traffic Control for Highway Construction and Maintenance Operations.
- All water mains to be D.I.P. Class 52 unless otherwise noted.
- Top of all water mains to have a minimum of 3'-1/2' cover unless otherwise noted.
- Valves adjacent to tees shall be strapped to tees.
- Block all fittings with concrete.
- Bury line elevations on fire hydrants shall be set to the elevations shown on the drawings. All fire hydrants shall be strapped and buttressed with concrete in accordance with standard details. Soil around the fire hydrant to be compacted in accordance with Sections 100D & 100E of the Standard Specifications.
- All water house connections shall be for an inside meter setting.
- The contractor shall not operate any water main valves on the existing system.
- All sewer mains shall be C.S.P.X., V.C.P.X., or P.V.C.
- The contractor shall provide a joint in all sewer mains within 2'-0" of exterior manhole wall.
- All manholes shall be 4'-0" inside diameter, unless otherwise noted.
- Water main and water house connection, lines must have a minimum of one foot separation from the sanitary sewer and sewer house connections as they cross. Except at crossings, water and sewer lines shall have a minimum horizontal separation of 10'.
- Manholes designated thus: WT, shall have a Watertight Frame and Cover.
- All D.I.P. fittings shall be in accordance with A.W.W.A. Specification C-153 Ductile Iron Compact Fittings, 3" through 12" for water and other liquids.

QUANTITIES			
ITEM	EST'D	AS BUILT	MATERIAL / SUPPLIER
12" W	890 L.F.	892 L.F.	GRIFFEN PIPE PRODUCTS
8" W	323 L.F.	323 L.F.	GRIFFEN PIPE PRODUCTS
8" S	299 L.F.	357 L.F.	J.M. MANUFACTURING COEP
6" WHC	15 L.F.	58 L.F.	GRIFFEN PIPE PRODUCTS
2" WHC	15 L.F.	21 L.F.	HONNELL METALS
FIRE HYDRANT	3 EA.	5 EA.	MUELLER COMPANY
6" V (excl. F.H.)	1 EA.	1 EA.	MUELLER COMPANY
8" V	1 EA.	1 EA.	MUELLER COMPANY
2" Air Valve - MH	1 EA.	1 EA.	ATLANTIC CONCRETE
Manholes	3 EA.	5 EA.	ATLANTIC CONCRETE

Sediment Control Measures will be implemented in accordance with Section 219 of the Specifications & with Site Development Plan S.D.P.-90-33; Drawing Sediment & Erosion Control.

REVIEWED FOR HOWARD SOIL CONSERVATION DISTRICT AND MEETS TECHNICAL REQUIREMENT.
 Signature: *James M. Kelly* DATE: 11/2/89
 U.S. SOIL CONSERVATION SERVICE

This Development Plan is approved for Soil Erosion and Sediment Control by the Howard Soil Conservation District.

APPROVED:
 Signature: *John H. Anton* DATE: 11/2/89
 HOWARD S.C.D.

DEPARTMENT OF PUBLIC WORKS
 HOWARD COUNTY, MARYLAND

James M. Kelly 11/2/89
 DIRECTOR OF PUBLIC WORKS DATE

Paul H. Sackett 11/2/89
 CHIEF, BUREAU OF ENGINEERING DATE

Robert W. Quinn 10-27-89
 CHIEF, BUREAU OF UTILITIES DATE

Paul H. Sackett 11/2/89
 CHIEF, LAND DEVELOPMENT DIV. DATE

CLARK-FINEPROCK & SACKETT, INC.
 ENGINEERS-PLANNERS-SURVEYORS

7135 MINSTREL WAY COLUMBIA MARYLAND 21045
 (301) 381-7500 BALTO. (301) 621-8100 WASH.



DES: C.C.M.			
DRN: V.L.M.			
CHK: C.C.M.			
DATE: 8-89	BY: NO.	REVISION	DATE

TITLE SHEET

600' SCALE MAP NO. 36 BLOCK NO.

MARRIOTT COURTYARD HOTEL

COLUMBIA CORPORATE PARK, PARCEL "A-15"
 A RESUBDIVISION OF PARCEL "A"
 SIELING INDUSTRIAL CENTER
 SECTION I AREA I
 6TH ELECTION DISTRICT
 CONTRACT NO. 24-1982-D

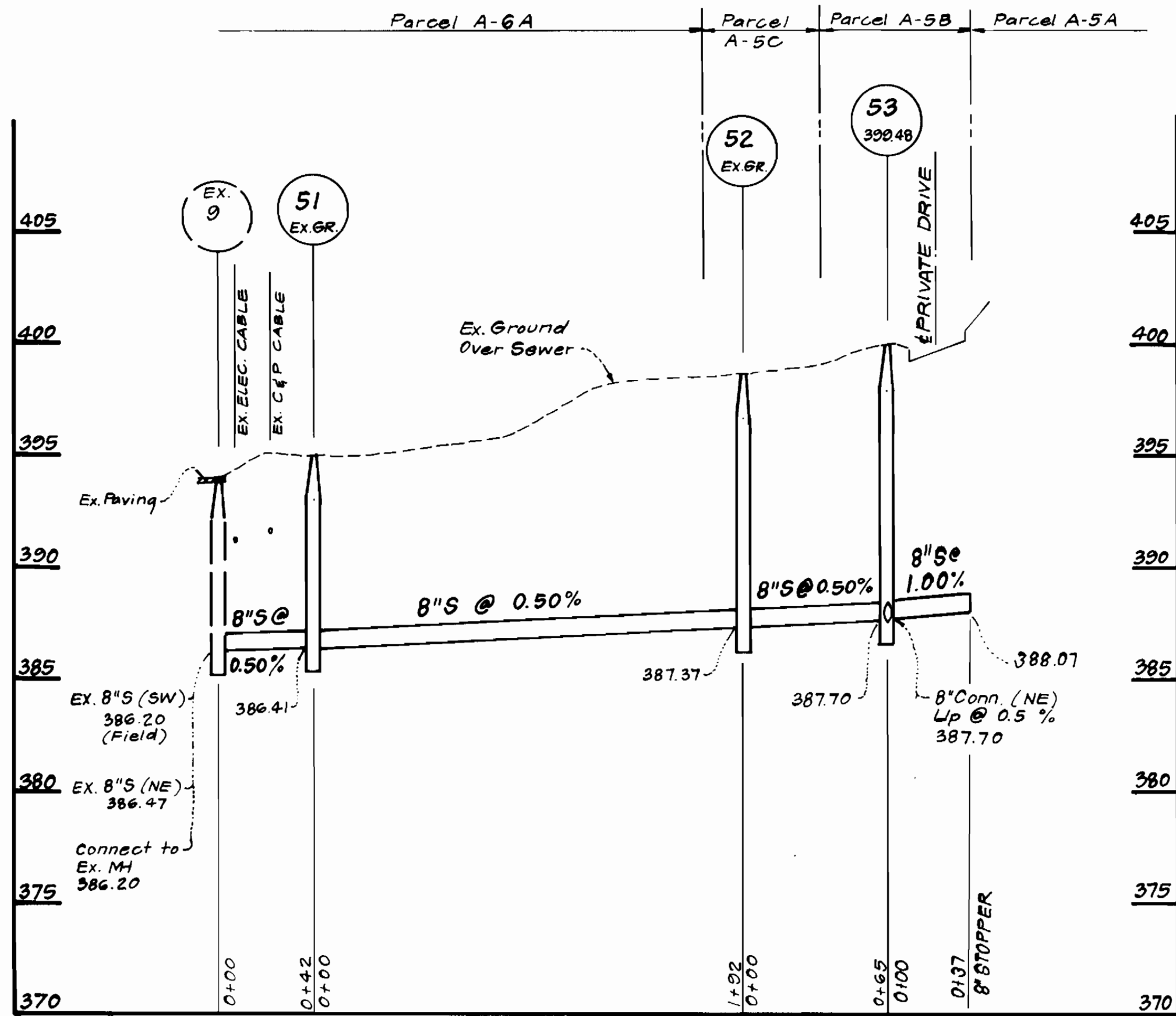
SCALE AS SHOWN

SHEET 1 OF 3

STANFORD BOULEVARD

SPECIAL SEWER ABANDONMENT PROCEDURE

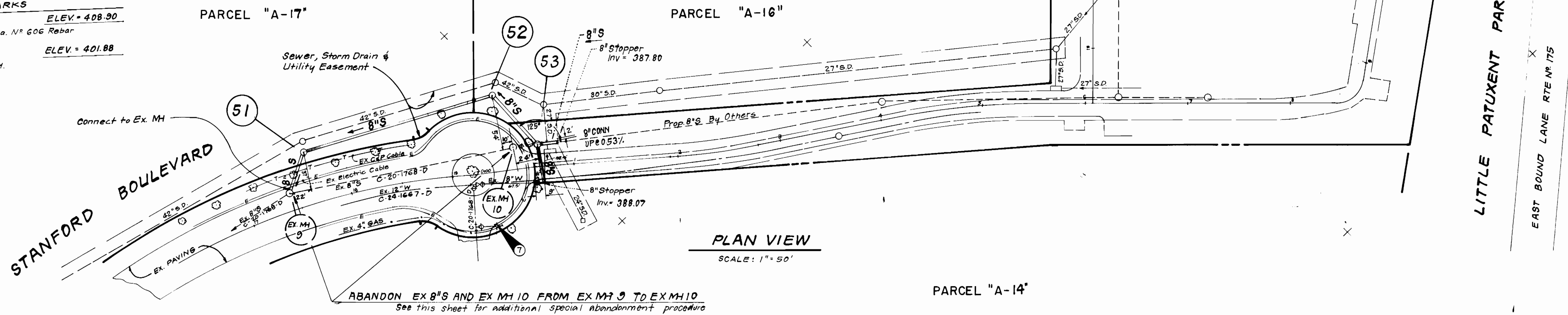
1. Cut and plug Ex 8" S entering Ex MH 9 and brick shut inlet channel.
2. Remove and salvage frame and cover of Ex MH 10. (Frame and cover shall be delivered to the Bureau of Utilities Warehouse Facility as directed by DPW Inspector.) Remove top cone section of manhole. Return to Bureau of Utilities.
3. Plug inlet and outlet of Ex MH 10 and fill to sub grade level with crusher run; Compact thoroughly. Repair paving in accordance with Std Det 6.4.01



PROFILE SCALE
 HORZ: 1" = 50'
 VERT: 1" = 5'

BENCH MARKS

BM N ^o 3	ELEV. = 408.90
Δ Trav. Sta. N ^o 606 Rebar	
BM N ^o 7	ELEV. = 401.88
Top of F.H.	



PLAN VIEW
 SCALE: 1" = 50'

ABANDON EX 8" S AND EX MH 10 FROM EX MH 9 TO EX MH 10
 See this sheet for additional special abandonment procedure

MARRIOTT COURTYARD HOTEL

DEPARTMENT OF PUBLIC WORKS HOWARD COUNTY, MARYLAND Director of Public Works: <i>[Signature]</i> 11/3/89 Chief, Bureau of Utilities: <i>[Signature]</i> 10-17-87	CLARK · FINEPROCK & SACKETT, INC. ENGINEERS · PLANNERS · SURVEYORS 7135 MINSTREL WAY COLUMBIA MARYLAND 21045 (301) 381-7500 BALTO. (301) 621-8100 WASH.	STATE OF MARYLAND REGISTERED PROFESSIONAL ENGINEER [Seal]	DES: CCM/VLM			PLAN & PROFILES OF A SEWER RELOCATION	COLUMBIA CORPORATE PARK, PARCEL "A-15" A RESUBDIVISION OF PARCEL "A" SIELING INDUSTRIAL CENTER SECTION I AREA I 6 TH ELECTION DISTRICT CONTRACT NO. 24-1982-D	SCALE AS SHOWN
			DRN: V. L. M.					DATE: 8-89

WATER/SEWER AS-BUILT 7/17/90