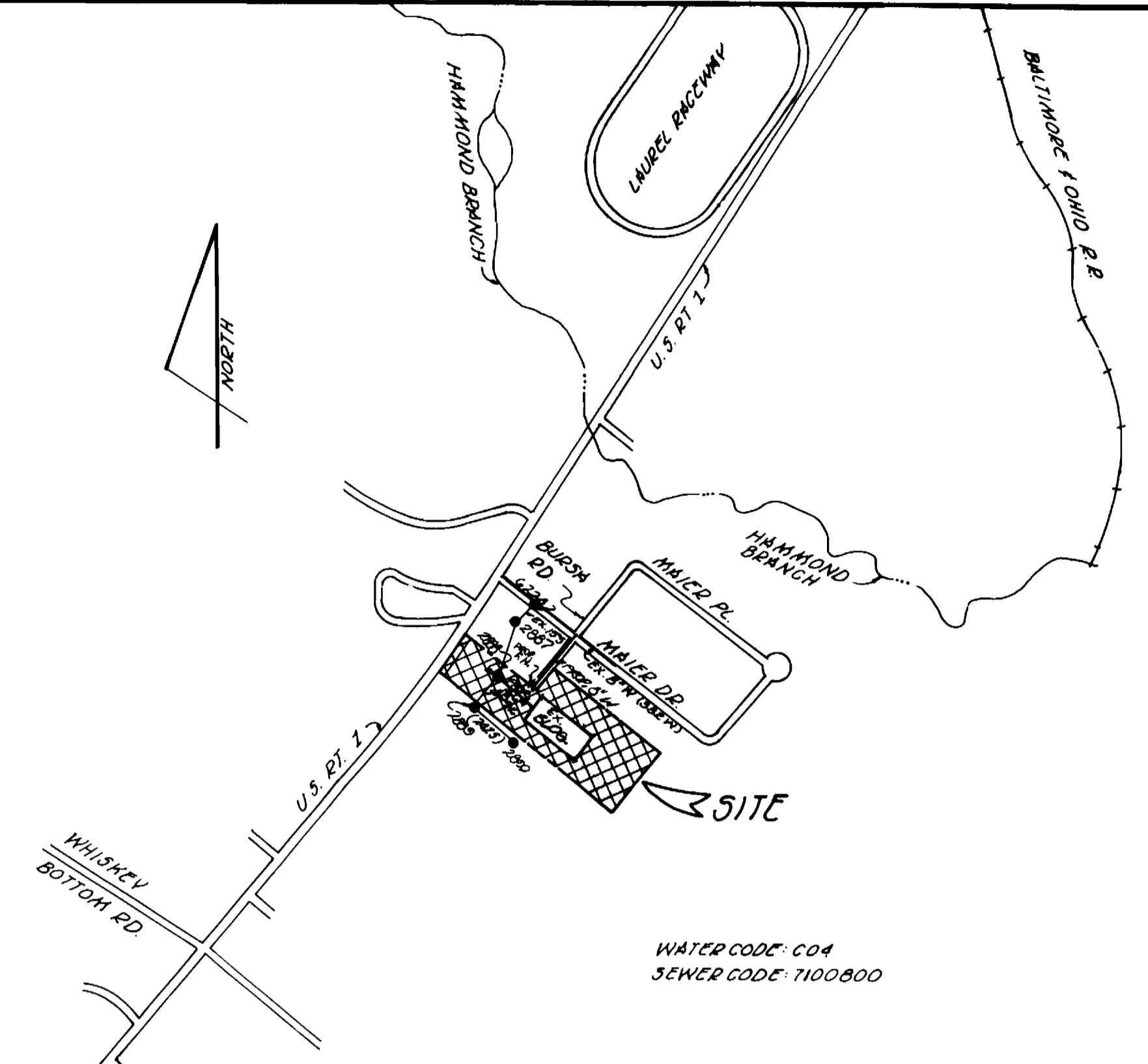
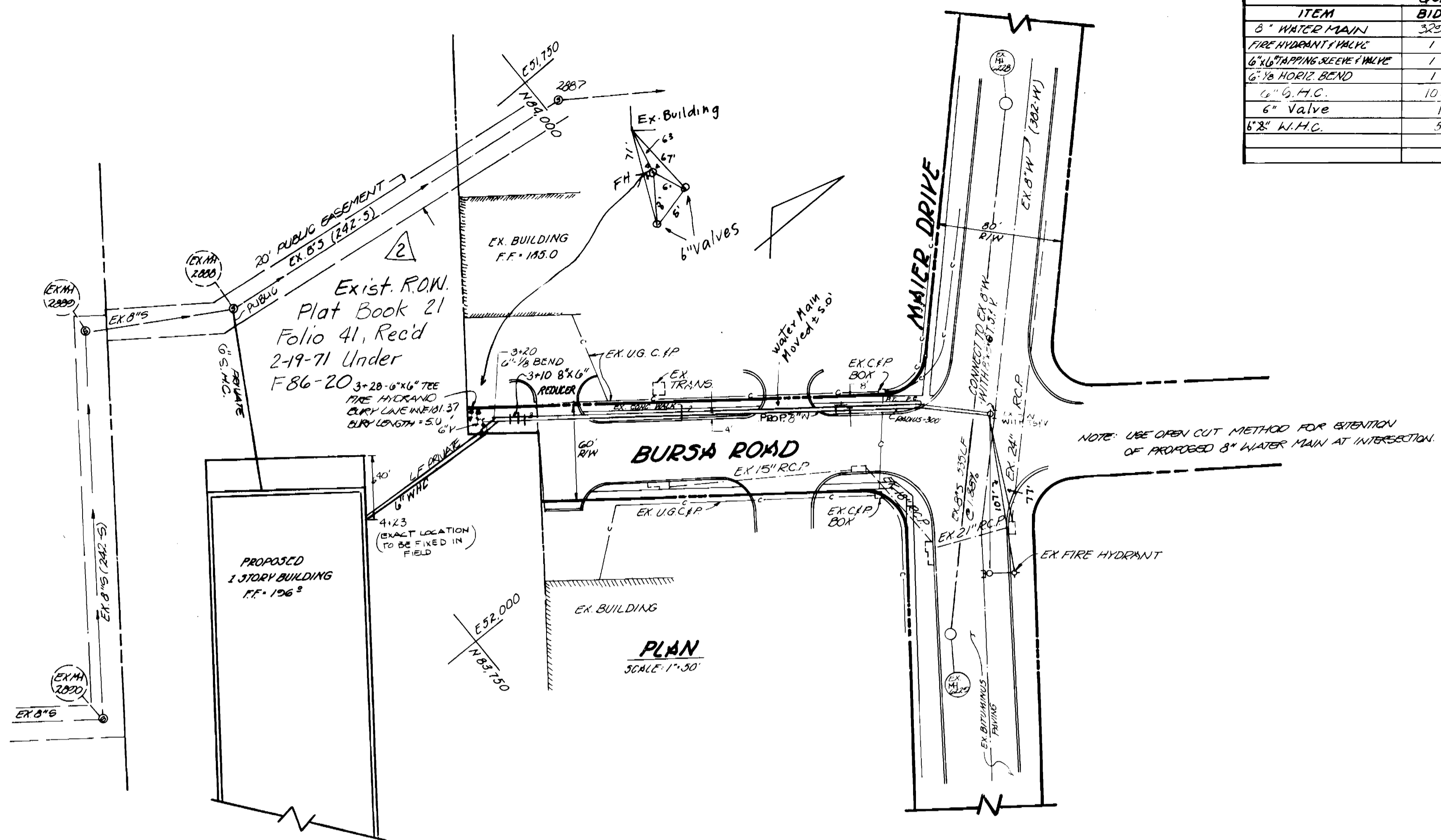


ITEM	QUANTITIES		MATERIAL/SUPPLIER
	BID	AS-BUILT	
6" WATER MAIN	325 LF	309	Atlantic States A & P
FIRE HYDRANT VALVE	1	1	Mueller A & P
6" STAPPING, REEF, FIMBLE	1	1	"
6" HORIZ BEND	1	1	Tyler Pipe "
6" G.M.C.	10 LF	18	Flo-Conto "
6" Valve	1	1	Mueller "
6" W.H.C.	5'	168	Atlantic States "

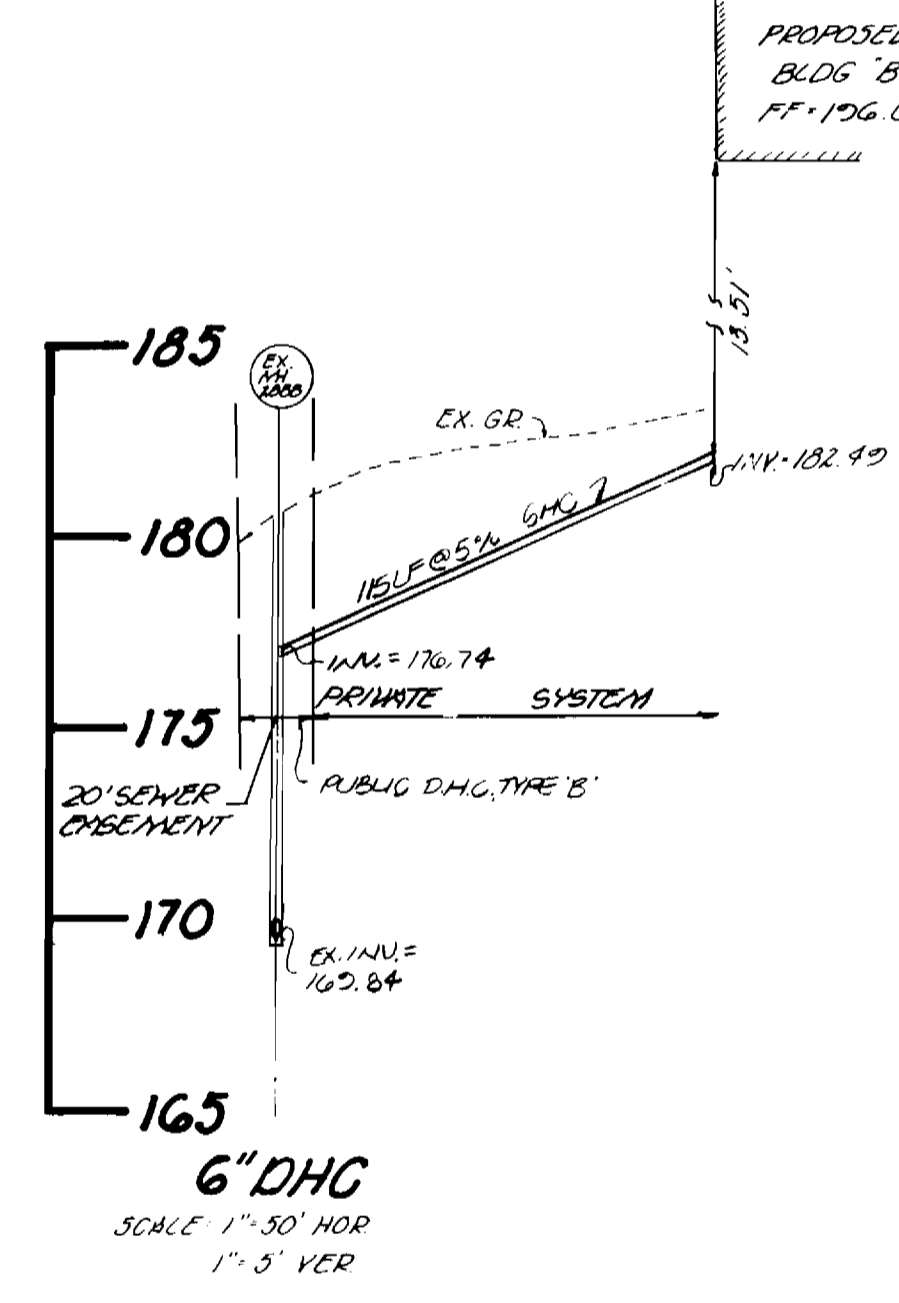
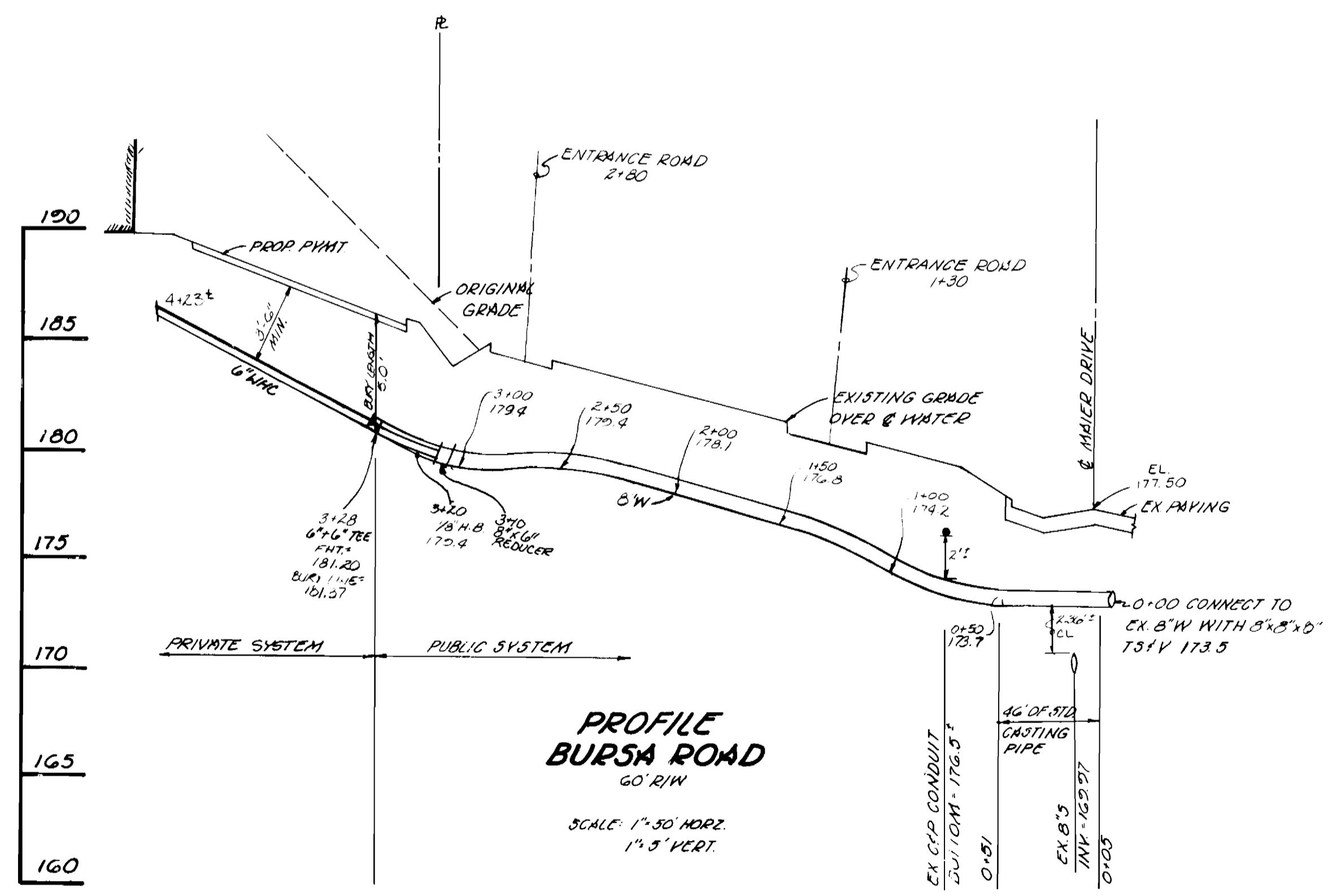


TYPE OF BUILDING: RESEARCH
 NUMBER OF PARCELS: 1
 NUMBER OF HOUSE CONNECTIONS: 1
 DRAINAGE AREA: PATUXENT

VICINITY MAP
 SCALE: 1"=400'

GENERAL NOTES:

- APPROXIMATE LOCATION OF EXISTING MAINS ARE SHOWN. THE CONTRACTOR SHALL TAKE ALL NECESSARY PRECAUTIONS TO PROTECT THE EXISTING MAINS & SERVICES AND MAINTAIN UNINTERRUPTED SUPPLY. ANY DAMAGE INCURRED SHALL BE REPAIRED IMMEDIATELY TO THE SATISFACTION OF THE INSPECTOR AT THE CONTRACTOR'S EXPENSE.
- ALL HORIZONTAL CONTROLS ARE BASED ON MARYLAND STATE COORDINATE SYSTEM.
- ALL VERTICAL CONTROLS ARE BASED ON U.S.G.S. DATUM.
- ALL PIPE ELEVATIONS SHOWN ARE INVERT ELEVATION.
- CLEAR ALL UTILITIES BY A MINIMUM OF 6" CLEAR ALL POLES BY 2'-0" MINIMUM OR TUNNEL AS REQUIRED. ANY COST INCURRED TO THE CONTRACTOR FOR TUNNELING OR BRACING AT THE POLE SHALL BE INCLUDED IN UNIT PRICES BID FOR CONSTRUCTION OF THE MAIN.
- FOR DETAILS NOT SHOWN ON THE DRAWINGS USE HOWARD COUNTY STANDARD DETAILS, 1989 AMENDMENTS, UNLESS OTHERWISE NOTED.
- FOR MATERIALS & CONSTRUCTION METHODS USE HOWARD COUNTY STANDARD SPECIFICATIONS.
- CONTRACTOR SHALL NOTIFY THE FOLLOWING UTILITIES OR AGENCIES AT LEAST FIVE (5) WORKING DAYS BEFORE STARTING WORK SHOWN ON THESE PLANS:
 BALTIMORE GAS & ELECTRIC COMPANY - UNDERGROUND GAS DISTRIBUTION CUSTOMER SERVICE: 685-0123
 BALTIMORE GAS & ELECTRIC COMPANY - UNDERGROUND ELECTRIC DISTRIBUTION CUSTOMER SERVICE: 685-0123
 "MISS UTILITY" 1-800-257-7777, BUREAU OF UTILITIES: 992-2366
 CHESAPEAKE & POTOMAC TELEPHONE COMPANY: 725-9976
- CONTRACTOR SHALL LOCATE EXISTING UTILITIES A MINIMUM OF TWO (2) WEEKS IN ADVANCE OF CONSTRUCTION OPERATIONS IN THE VICINITY OF PROPOSED UTILITIES AT HIS OWN EXPENSE.
- TREES ARE TO BE PROTECTED FROM DAMAGE TO MAXIMUM EXTENT. TREES LOCATED WITHIN THE CONSTRUCTION STRIP ARE NOT TO BE REMOVED OR DAMAGED BY THE CONTRACTOR.
- CONTRACTOR SHALL REMOVE TREES, STUMPS & ROOTS ALONG LINE OF EXCAVATION AS DIRECTED BY THE ENGINEER. PAYMENT FOR SUCH REMOVAL SHALL BE INCLUDED IN THE UNIT PRICE BID FOR CONSTRUCTION OF THE MAIN.
- PLACE REGULATION "MEN WORKING" AND WARNING SIGNS AS REQUIRED TO COMPLY WITH MARYLAND STATE HIGHWAY ADMINISTRATION MANUAL OF TRAFFIC CONTROL FOR HIGHWAY CONSTRUCTION AND MAINTENANCE OPERATIONS.
- 6" SEWER MAIN SHALL BE C.S.P.C., R.C.S.P.P.C., V.C.P.C. UNLESS OTHERWISE NOTED.
- CONTRACTOR SHALL PROVIDE A JOINT IN SEWER MAIN WITHIN 2'-0" OF EXTERIOR MANHOLE WALLS.
- ALL WATER HOUSE CONNECTIONS SHALL BE FOR MIN INSIDE METER SETTING.
- ALL WATER MAINS SHALL BE D.I.P., CLASS 52 ONLY.
- TOP OF ALL WATER MAINS SHALL HAVE A MINIMUM OF 3 1/2" COVER UNLESS OTHERWISE NOTED.
- VALVES ADJACENT TO TREES SHALL BE STRAPPED TO TREES.
- BLOCK ALL FITTINGS WITH CONCRETE.
- BURY LINE ELEVATIONS ON FIRE HYDRANTS SHALL BE SET TO THE ELEVATIONS SHOWN ON THE DRAWINGS. ALL FIRE HYDRANTS SHALL BE STRAPPED & BUTTRESSED WITH CONCRETE IN ACCORDANCE WITH STANDARD DETAILS. SOIL AROUND THE FIRE HYDRANT TO BE COMPACTED IN ACCORDANCE WITH SECTIONS 37.01 & 37.05 OF THE STANDARD SPECIFICATIONS.



REVIEWED FOR HOWARD SOIL CONSERVATION DISTRICT AND MEETS TECHNICAL REQUIREMENTS.
 James McLean / 11/2/89
 U.S. SOIL CONSERVATION SERVICE
 THIS DEVELOPMENT PLAN IS APPROVED FOR SOIL EROSION / SEDIMENT CONTROL BY THE HOWARD COUNTY CONSERVATION DISTRICT.
 APPROVED: John P. Peltan / 11/2/89
 HOWARD COUNTY

NOTE: SEDIMENT CONTROL MEASURES OF THIS CONTRACT WILL BE IMPLEMENTED IN ACCORDANCE WITH SECTION 21.9 OF THE STANDARD SPECIFICATIONS & ROAD CONSTRUCTION PLANS: 6.D.P.-89-157.

CONTRACT NO. 24-1779-D

DEPARTMENT OF PUBLIC WORKS
 DATE: 11-2-89
 CHIEF, BUREAU OF ENGINEERING
 DATE: 11/2/89
 CHIEF, LAND DEVELOPMENT DIV.

BOENDER ASSOCIATES, INC.
 ENGINEERS PLANNERS SURVEYORS
 3565 ELLICOTT MILLS DR
 ELLICOTT CITY, MARYLAND 21043
 (301) 465-7777

DES:	
DRN: DWELSH	
CHK:	
DATE: 12-13-88	

WATER & SEWER PLAN AND PROFILE
 2" W.H.C. TO 6" W.H.C.
 Added Exist. R.O.W. Note
 PUBLIC WORKS COMMENTS DATED, OCTOBER 16, 1989

McLEAN RENTALS INC.
 6 TH ELECTION DISTRICT
 CONTRACT NO. 24-1979-D
 SCALE AS SHOWN
 SHEET 1 OF 1