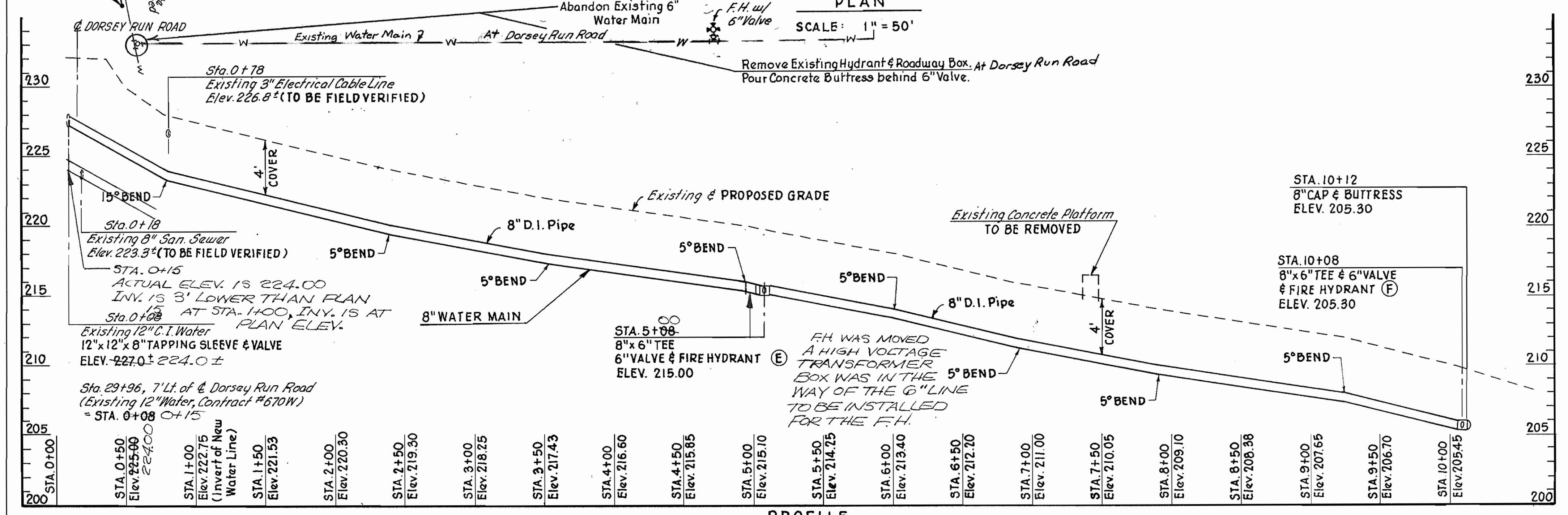
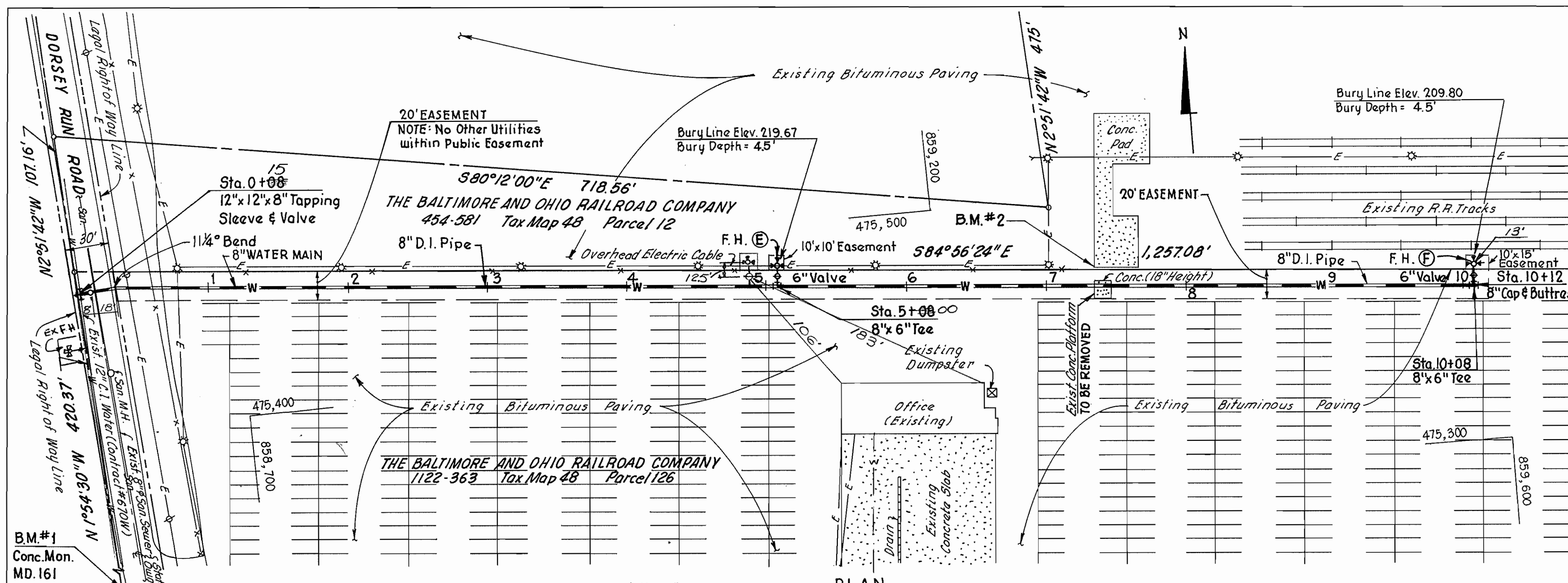


As-BUILT 7-19-94



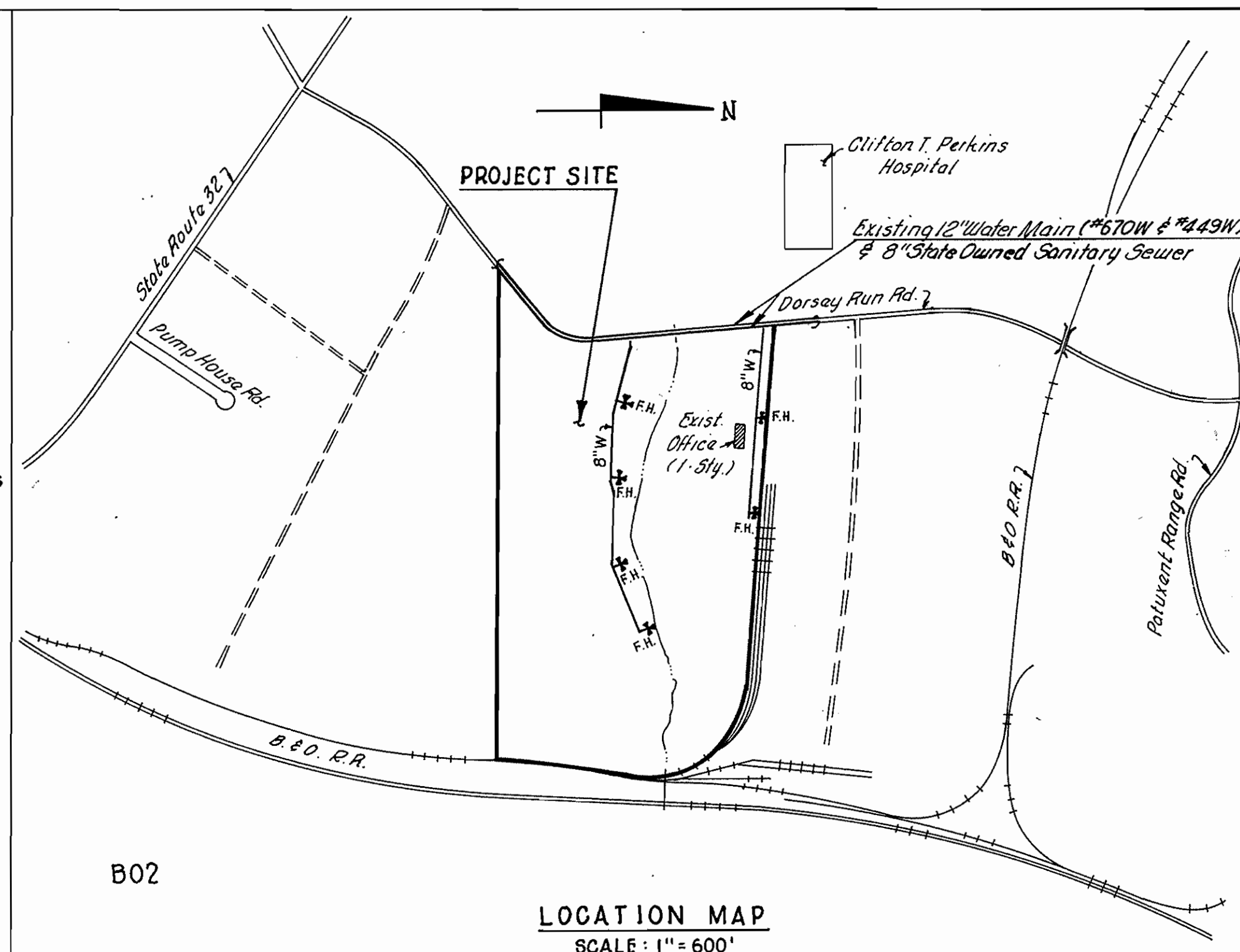
PROFILE
SCALE: Horiz. 1"=50'
Vert. 1"=5'

HYDRANT DATA:

HYDRANT	BURY LINE ELEV.	BURY DEPTH	EASEMENT AROUND HYDRANT
(E)	219.67	4.5'	10' x 10'
(F)	209.80	4.5'	10' x 15'

QUANTITIES

ITEM	ESTIMATED	AS-BUILT	MATERIAL/SUPPLIER
12"x12"x8" Tapping Sleeve and 8" Valve	2	2	MUELLER CO. A&P SUPPLY
Fire Hydrants	6	2	MUELLER CO. A&P SUPPLY
8" Valve	1	-	MUELLER CO. A&P SUPPLY
8" Cap and Buttress	2	1	TYLER PIPE A&P SUPPLY
8" D.I. Pipe, CI 52	2,580 L.F.	997 L.F.	ATLANTIC ST. A&P SUPPLY
6" VALVES		2	MUELLER CO. A&P SUPPLY
6" D.I. PIPE		24'-4"	ATLANTIC ST. A&P SUPPLY



TYPE OF FACILITY: STORAGE OF UNLICENSED VEHICLES
 NUMBER OF PARCELS: 2 (126 & 128)
 NUMBER OF WATER MAIN TO HOME: NONE
 WATER CODE = B02

BENCH MARKS:
 B.M.#1 Elev. 209.34
 B.M.#2 Elev. 214.70
 B.M.#3 Elev. 184.25

CONCRETE MONUMENT AT SOUTHWEST CORNER OF PARCEL 126, CORNER OF CONCRETE PAD, 14' LEFT OF STATION 7+35, SHEET 1 OF 2.
 TOP OF IRON PIPE PROPERTY CORNER, 14.5' LEFT OF STATION 11+25, SHEET 2 OF 2.

- GENERAL NOTES
- PART I
- Approximate location of existing mains are shown. The Contractor shall take all necessary precautions to protect existing mains and services and maintain uninterrupted supply. Any damage incurred shall be repaired immediately to the satisfaction of the Engineer, at the Contractor's expense.
 - All horizontal controls are based on Maryland State Coordinates.
 - All vertical controls are based on U.S.G.S. Datum.
 - All pipe elevations shown are invert elevations.
 - Clear all utilities by a minimum of 6". Clear all poles by 2'-0" minimum or tunnel as required. Any cost incurred to the Contractor for tunneling or bracing at poles shall be included in the unit prices bid for construction of the main. The Contractor shall coordinate with the utility companies to schedule the bracing of poles.
 - Contractor shall locate existing utilities a minimum of two (2) weeks in advance of construction operations in the vicinity of proposed utilities at his own expense.
 - Contractor shall notify the following utilities or agencies at least five (5) working days before starting work shown on these plans:
 - State Highway Administration - 531-5533
 - Baltimore Gas & Electric Company - Contractor Services - 850-4620
 - Baltimore Gas & Electric Company - Underground Damage Control - 859-9004
 - Baltimore Gas & Electric Company - Trouble Shooting - 296-9001
 - Engineering - "Damage Control" - 234-5621
 - "Miss Utility" - 1-301-559-0100
 - Chesapeake & Potomac (C&P) Telephone Company - 725-9976 or 1-800-257-7777
 - American Telephone and Telegraph - Cable Location Division - 393-3553
 - Colonial Pipeline Company - 795-1390.
 - Bureau of Utilities Howard County - 992-2366.
- PART II
- All water mains to be D.I.P. CI 52 unless otherwise noted.
 - Top of all water mains to have a minimum of 3-1/2' cover unless otherwise noted.
 - Valves adjacent to tees shall be strapped to tees.
 - Block all fittings with concrete.
 - Bury line elevations on fire hydrants shall be set to the elevations shown on the drawings. All fire hydrants shall be strapped and buttressed with concrete in accordance with standard details. Soil around the fire hydrant to be compacted in accordance with the Sections 1005 of the Standard Specifications.
 - The Contractor shall not operate any water main valves on the existing system.
 - Open cut of Dorsey Run Road is acceptable for the extension of the Water Main. However, in the fall of 1989, resurfacing of Dorsey Run Road will be done. After resurfacing of the road, open cut of the road is not allowed. Boring and jacking method shall be used for the extension of the water main.

REVIEW FOR HOWARD COUNTY SOIL CONSERVATION DISTRICT AND MEETS TECHNICAL REQUIREMENTS.
James M. Sempleton 2/21/89
 U.S. SOIL CONSERVATION SERVICE DATE

THIS DEVELOPMENT PLAN IS APPROVED FOR SOIL EROSION & SEDIMENT CONTROL BY THE HOWARD SOIL CONSERVATION DISTRICT
Stephen L. ... 9/21/89
 HOWARD SOIL CONSERVATION DISTRICT DATE

SEDIMENT CONTROL MEASURES FOR THIS CONTRACT WILL BE IMPLEMENTED IN ACCORDANCE WITH SECTION 219 OF THE STANDARD SPECIFICATIONS AND SDP 89-178

DEPARTMENT OF PUBLIC WORKS
James M. Sempleton 9/26/89
 DIRECTOR OF PUBLIC WORKS DATE
Robert N. ... 9/26/89
 CHIEF, BUREAU OF UTILITIES DATE
... 9/26/89
 CHIEF, BUREAU OF ENGINEERING DATE
... 9/26/89
 CHIEF, LAND DEVELOPMENT DIVISION DATE

ENGINEER:
Thomas M. Sempleton P.E.
 BENATEC ASSOCIATES, INC.
 101 ERFORD ROAD P.O. BOX 8866
 CAMP HILL, PA. 17011-8866
 PHONE: (717) 763-7391



PROJECT NO. 82910
 DESIGNED: L.R.M.
 DRAWN: J.R.S.
 CHECKED: L.R.M.

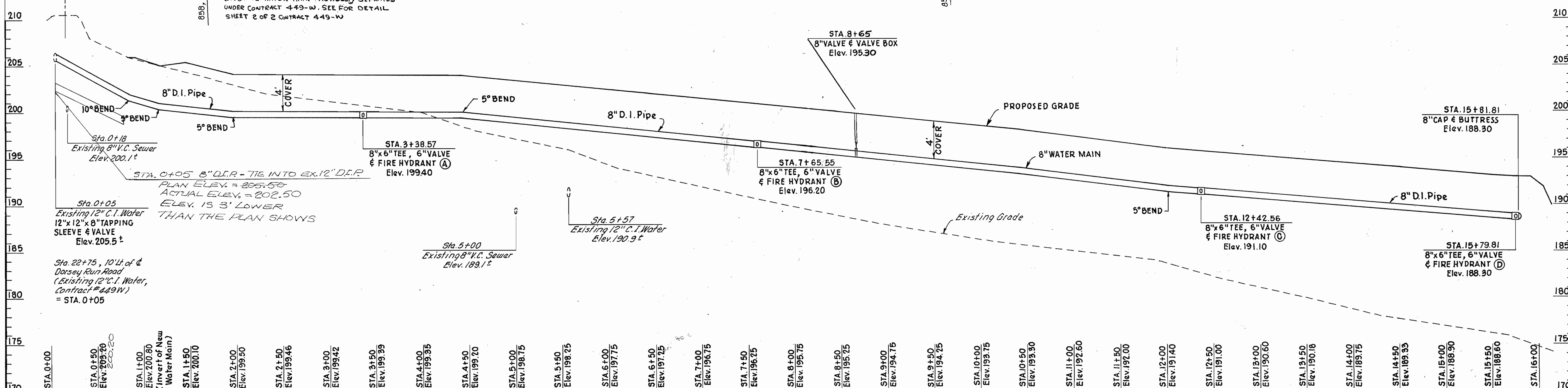
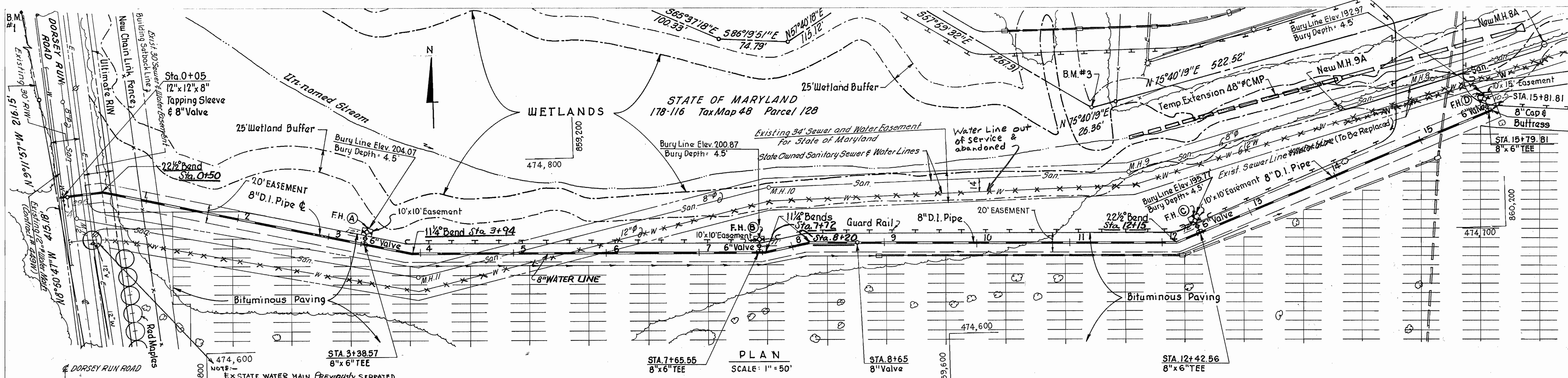
BY	NO.	REVISION	DATE
YC	1	Md. Dept of the Environment	11-2-89

PLAN AND PROFILE FOR:
 PROPOSED WATER MAINS

SCALE: AS SHOWN
 SHEET 1 of 2
 CSX AUTO DISTRIBUTION CENTER
 DORSEY RUN ROAD, 0.5 MILES NORTH OF STATE ROUTE 32-TAX MAP 48-PARCELS 128 AND 126
 6TH ELECTION DISTRICT
 CONTRACT NO. 44-1971-D

As-BUILT 7-19-94

AS-BUILT 7-19-94



PROFILE
 SCALES: Hor. 1"=50'
 Ver. 1"=5'

HYDRANT DATA :

HYDRANT	BURY LINE ELEV.	BURY DEPTH	EASEMENT AROUND HYDRANT
(A)	204.07	4.5'	10' x 10'
(B)	200.87	4.5'	10' x 10'
(C)	195.77	4.5'	10' x 10'
(D)	192.97	4.5'	10' x 15'

REVIEW FOR HOWARD COUNTY SOIL CONSERVATION DISTRICT AND MEETS TECHNICAL REQUIREMENTS.
Thomas M. Sumpster 9/21/89
 DATE
 U.S. SOIL CONSERVATION SERVICE

THIS DEVELOPMENT PLAN IS APPROVED FOR SOIL EROSION & SEDIMENT CONTROL BY THE HOWARD SOIL CONSERVATION DISTRICT
Stephen J. Fisher 9/21/89
 DATE
 HOWARD SOIL CONSERVATION DISTRICT

SEDIMENT CONTROL MEASURES FOR THIS CONTRACT WILL BE IMPLEMENTED IN ACCORDANCE WITH SECTION 219 OF THE STANDARD SPECIFICATIONS AND SDP 89-178

DEPARTMENT OF PUBLIC WORKS
James J. Lew 9/26/89
 DIRECTOR OF PUBLIC WORKS DATE
Robert M. Reinger 9-22-89
 CHIEF, BUREAU OF UTILITIES DATE
William E. Riley 9-22-89
 CHIEF, BUREAU OF ENGINEERING DATE
Paul M. Reardon 9/26/89
 CHIEF, LAND DEVELOPMENT DIVISION DATE

ENGINEER:
Thomas M. Sumpster P.E.
 BENATEC ASSOCIATES, INC.
 101 ERFORD ROAD P.O. BOX 8866
 CAMP HILL, PA. 17011 - 8866
 PHONE: (717) 763-7391



PROJECT NO.	BY	NO.	REVISION	DATE
82910	YC	1	Wetland Filling Area Reduced	8-24-89
	YC	2	Md. Dept of the Environment	11-2-89
	JEM	3	STATE WATER LINE OUT OF SERVICE & ABANDONED	6-26-90

DESIGNED: L.R.M.
 DRAWN: J.R.S.
 CHECKED: L.R.M.

PLAN AND PROFILE FOR:
 PROPOSED WATER MAINS

CSX AUTO DISTRIBUTION CENTER
 DORSEY RUN ROAD, .05 MILES NORTH OF STATE ROUTE 32-TAX MAP 48-PARCELS 128 AND 126
 6TH ELECTION DISTRICT
 CONTRACT NO. 44-1971-D

AS-BUILT 7-19-94