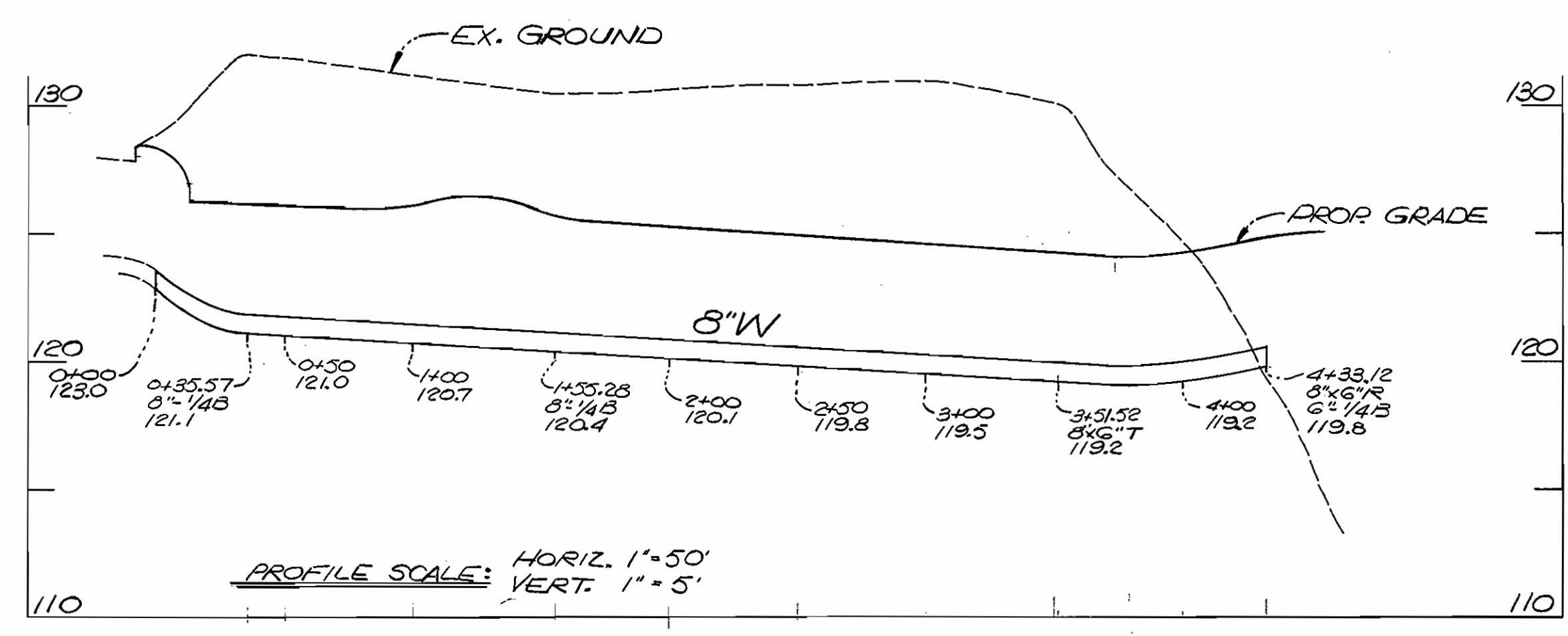
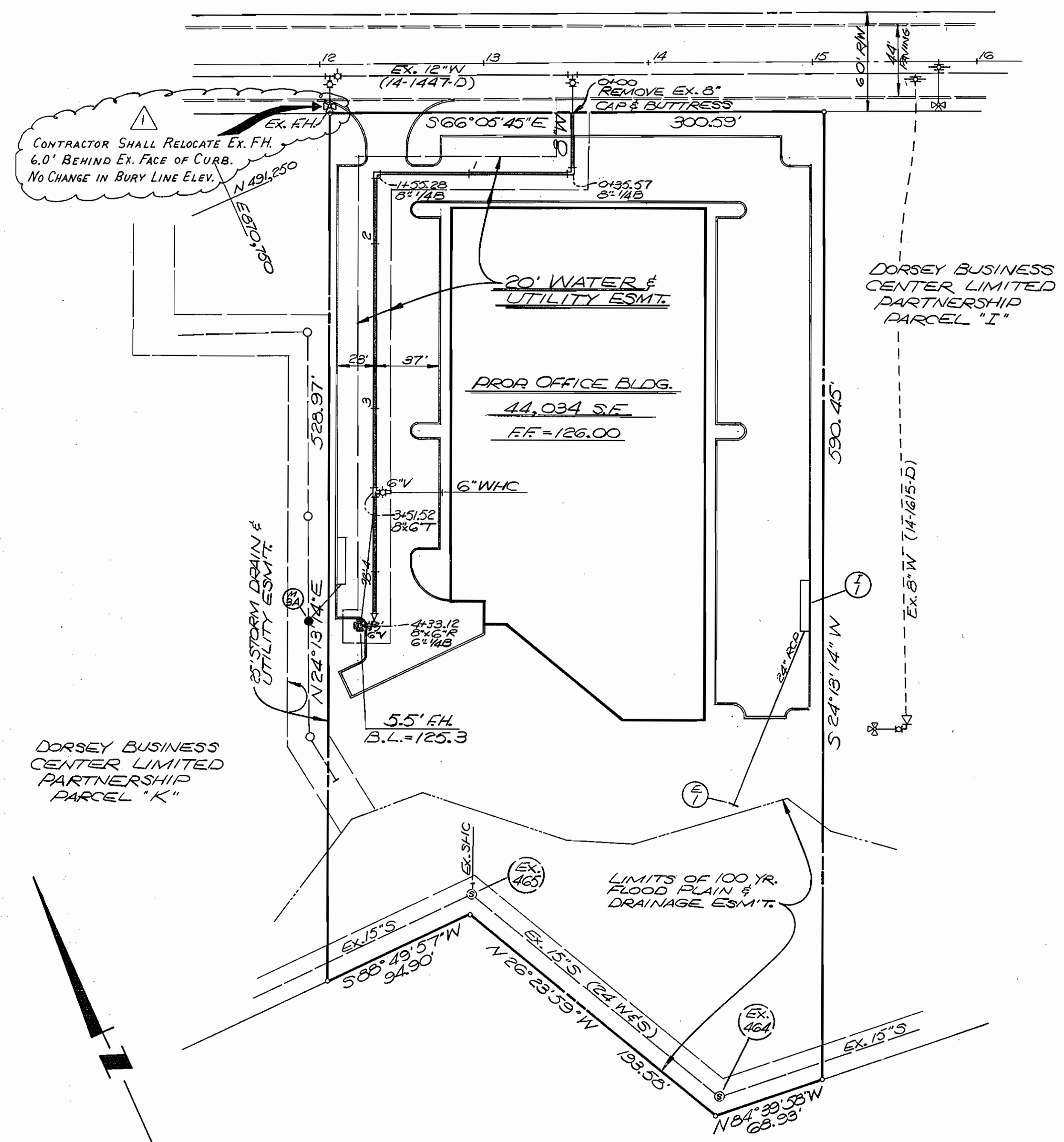
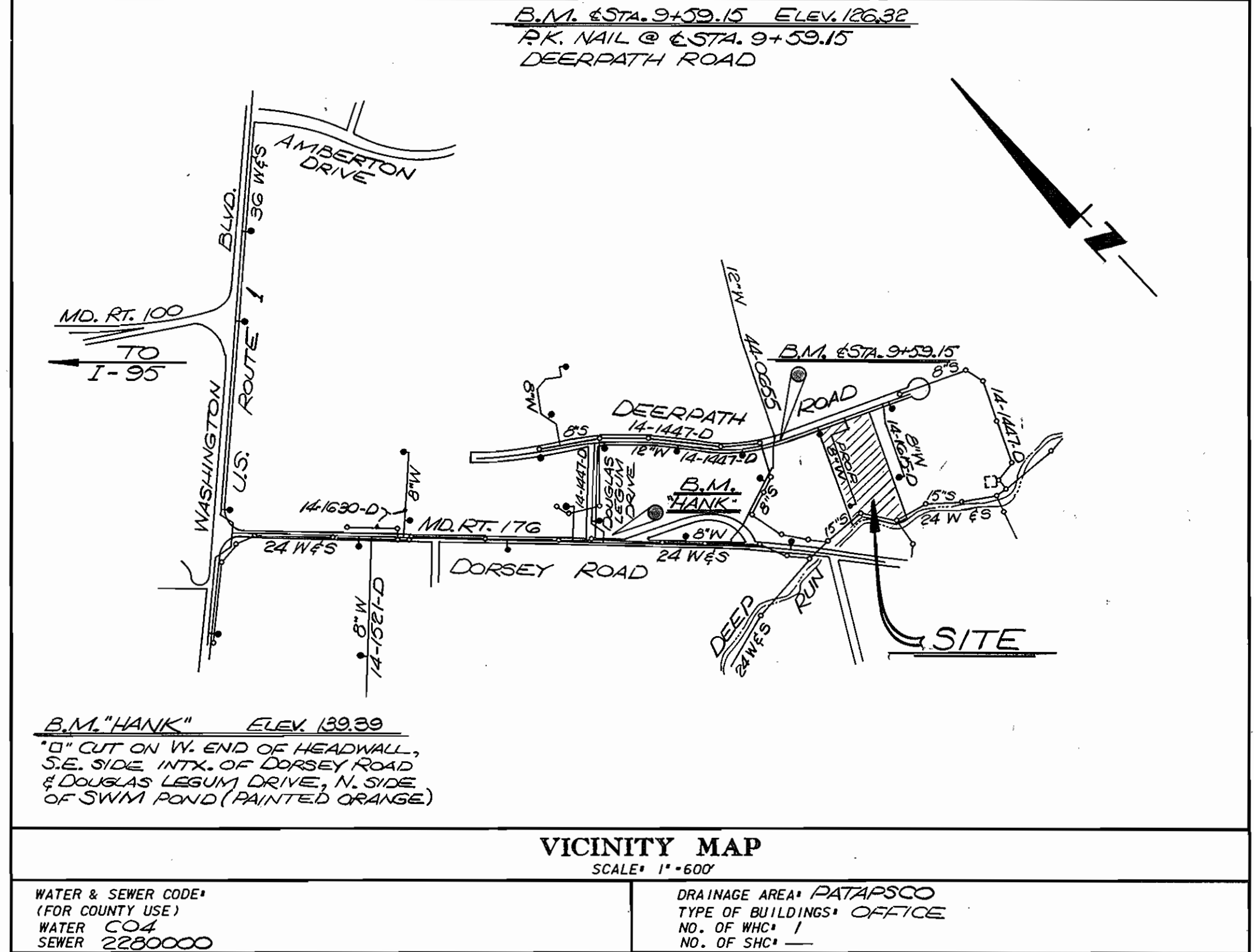


DEERPATH ROAD

QUANTITIES			
ITEM	BID	AS-BUILT	MAT'L./SUPPLIER
8" WATER MAIN	433 LF	430	ATLANTIC STATES / A+P
6" WATER MAIN	30 LF	25.0 LF	ATLANTIC STATES / A+P
6" VALVE	2	2	MUELLER / A+P
8" V.A.B.	2	2	TYLER PIPE / A+P
8" X 6" R	1	1	"
6" V.A.B.	1	1	TYLER PIPE / A+P
8" X 6" T	1	1	"
5.5' F.H.	1	1	MUELLER / A+P



- ### GENERAL NOTES
- APPROXIMATE LOCATION OF EXISTING MAINS ARE SHOWN. THE CONTRACTOR SHALL TAKE ALL NECESSARY PRECAUTIONS TO PROTECT EXISTING MAINS AND SERVICES AND MAINTAIN UNINTERRUPTED SUPPLY. ANY DAMAGE INCURRED SHALL BE REPAIRED IMMEDIATELY TO THE SATISFACTION OF THE ENGINEER, AT THE CONTRACTOR'S EXPENSE.
 - ALL HORIZONTAL CONTROLS ARE BASED ON MARYLAND STATE COORDINATES.
 - ALL VERTICAL CONTROLS ARE BASED ON U.S.G.S. DATUM.
 - ALL PIPE ELEVATIONS SHOWN ARE INVERT ELEVATIONS.
 - CLEAR ALL UTILITIES BY A MINIMUM OF 6'. CLEAR ALL POLES BY 2'-0" MINIMUM OR TUNNEL AS REQUIRED.
 - FOR DETAILS NOT SHOWN ON THE DRAWINGS, AND FOR MATERIALS AND CONSTRUCTION METHODS USE HOWARD COUNTY DESIGN MANUAL, VOLUME IV, STANDARD SPECIFICATIONS AND DETAILS FOR CONSTRUCTION. THE CONTRACTOR SHALL HAVE A COPY OF VOLUME IV ON THE JOB.
 - WHERE TEST PITS HAVE BEEN MADE ON EXISTING UTILITIES, THEY ARE NOTED BY THE SYMBOL AT THE LOCATION OF THE TEST PIT. A NOTE OR NOTES CONTAINING THE RESULTS OF THE TEST PIT OR PITS IS INCLUDED ON THE DRAWINGS. EXISTING UTILITIES IN THE VICINITY OF THE PROPOSED WORK FOR WHICH TEST PITS HAVE NOT BEEN DUG SHALL BE LOCATED BY THE CONTRACTOR TWO WEEKS IN ADVANCE OF CONSTRUCTION OPERATIONS AT HIS OWN EXPENSE.
 - CONTRACTOR SHALL NOTIFY THE FOLLOWING UTILITIES OR AGENCIES AT LEAST FIVE WORKING DAYS BEFORE STARTING WORK SHOWN ON THESE PLANS:
 - STATE HIGHWAY ADMINISTRATION - 531-5533
 - BALTIMORE GAS & ELECTRIC CO. - CONTRACTOR SERVICE 561-2585
 - BALTIMORE GAS & ELECTRIC CO. - UNDERGROUND DAMAGE CONTROL 234-5621
 - BALTIMORE GAS & ELECTRIC CO. - TROUBLE SHOOTING 298-9013
 - MISS UTILITY - 1-559-0100
 - COLONIAL PIPELINE CO. - 795-1390
 - BUREAU OF UTILITIES - 992-2366
 - TREES AND SHRUBS ARE TO BE PROTECTED FROM DAMAGE TO MAXIMUM EXTENT. TREES AND SHRUBS LOCATED WITHIN THE CONSTRUCTION STRIP ARE NOT TO BE REMOVED OR DAMAGED BY THE CONTRACTOR.
 - CONTRACTOR SHALL REMOVE TREES, STUMPS AND ROOTS ALONG LINE OF EXCAVATION.
 - ALL WATER MAINS TO BE D.I.P. UNLESS OTHERWISE NOTED.
 - TOPS OF ALL WATER MAINS TO HAVE A MINIMUM OF 3'-1/2" COVER UNLESS OTHERWISE NOTED.
 - VALVES ADJACENT TO TEES SHALL BE STRAPPED TO TEES.
 - ALL FITTINGS SHALL BE BUTTRESSED OR ANCHORED WITH CONCRETE IN ACCORDANCE WITH THE STANDARD DETAILS UNLESS OTHERWISE PROVIDED FOR ON THE DRAWINGS.
 - FIRE HYDRANTS SHALL BE SET TO THE BURY LINE ELEVATIONS SHOWN ON THE DRAWINGS. ALL FIRE HYDRANTS SHALL BE STRAPPED AND BUTTRESSED WITH CONCRETE IN ACCORDANCE WITH STANDARD DETAILS. SOIL AROUND THE FIRE HYDRANT SHALL BE COMPACTED IN ACCORDANCE WITH SECTION 1003 OF THE STANDARD SPECIFICATIONS.
 - THE CONTRACTOR SHALL NOT OPERATE ANY WATER MAIN VALVES ON THE EXISTING WATER SYSTEM.
 - ALL WATER HOUSE CONNECTIONS SHALL BE FOR AN INSIDE METER SETTING, UNLESS OTHERWISE NOTED.
 - EXTEND PIPE AS NECESSARY TO INSTALL PLUG FOR BLOCKING, WHERE WATER MAINS END WITH VALVES.
 - ALL SEWER MAINS SHALL BE C.S.P.X., D.I.P., V.C.P.X., A.C.P. CLASS 2400 OR P.V.C. UNLESS OTHERWISE NOTED.
 - THE CONTRACTOR SHALL PROVIDE A JOINT IN ALL SEWER MAINS WITHIN 2'-0" OF EXTERIOR MANHOLE WALL.
 - ALL MANHOLES SHALL BE 4'-0" INSIDE DIAMETER UNLESS OTHERWISE NOTED.
 - ORIGINAL GROUND OVER WATER AND SEWER WAS TAKEN FEB. 1989.
 - STRAW BALE DIKES AND SILT FENCES ARE INTERCHANGEABLE.
 - ALL D.I.P. FITTINGS SHALL BE IN ACCORDANCE WITH A.W.W.A. SPECIFICATION C-153, DUCTILE IRON COMPACT FITTINGS, 3 INCH THROUGH 1/2 INCH FOR WATER AND OTHER LIQUIDS.
 - ALL SERVICE CLAMPS ARE TO HAVE STAINLESS STEEL STRAPS.

REVISED FOR HOWARD S.C.D. AND MEETS TECHNICAL REQUIREMENTS.
James M. Holm 10/19/89
U.S. SOIL CONSERVATION SERVICE DATE

THIS DEVELOPMENT PLAN IS APPROVED FOR SOIL EROSION AND SEDIMENT CONTROL BY THE HOWARD SOIL CONSERVATION DISTRICT
John L. Robinson 10/19/89
HOWARD S.C.D. DATE

SEDIMENT CONTROL MEASURES FOR THIS CONTRACT WILL BE IMPLEMENTED IN ACCORDANCE WITH ARTICLE 15 OF THE STANDARD SPECIFICATION, AND SITE PLANS SDP-89-255

BEFORE BEGINNING CONSTRUCTION, CONTACT "MISS UTILITY" AT 1-800-257-7777 AT LEAST 48 HOURS PRIOR TO CONSTRUCTION

DEPARTMENT OF PUBLIC WORKS
HOWARD COUNTY, MARYLAND

James M. Holm 10/23/89
DIRECTOR OF PUBLIC WORKS DATE

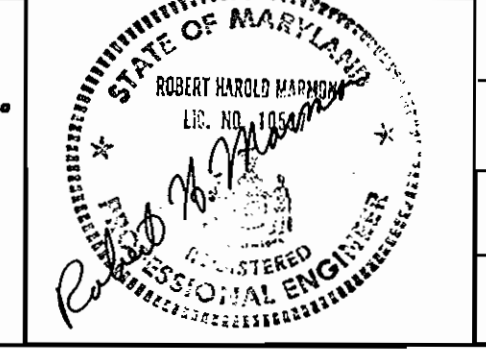
Robert R. Reinger 10-17-89
CHIEF, BUREAU OF UTILITIES DATE

William J. Riley 10-23-89
CHIEF, BUREAU OF ENGINEERING DATE

Paul D. Deegan 10/23/89
CHIEF, LAND DEVELOPMENT DIVISION DATE

ENGINEERS-ARCHITECTS-PLANNERS-SCIENTISTS-SURVEYORS-PHOTOGRAMMETRISTS

GREENHORNE & O'MARA, INC.
113 WEST ROAD, SUITE 203
BALTIMORE, MD. 21204
PHONE (301) 296-4100



DES: JDP	
DRN: JDP/um	
CHK: RHM	
DATE: May, 89	
BY: G60	RELOCATE EX. F.H. 6.0' BEHIND EX. F/C
NO.:	6/90
REVISIONS:	
DATE:	

PLAN FOR
WATER MAIN EXTENSION

600' SCALE MAP NO. 43

BLOCK NO. 6

DORSEY BUSINESS CENTER
SECTION 1
PARCEL "J"

TAX MAP 43 PLAT NO. 6917

CONTRACT NO. 44-1970-D

FIRST ELECTION DISTRICT - HOWARD CO., MARYLAND

SCALE: AS SHOWN

SHEET 1 OF 1