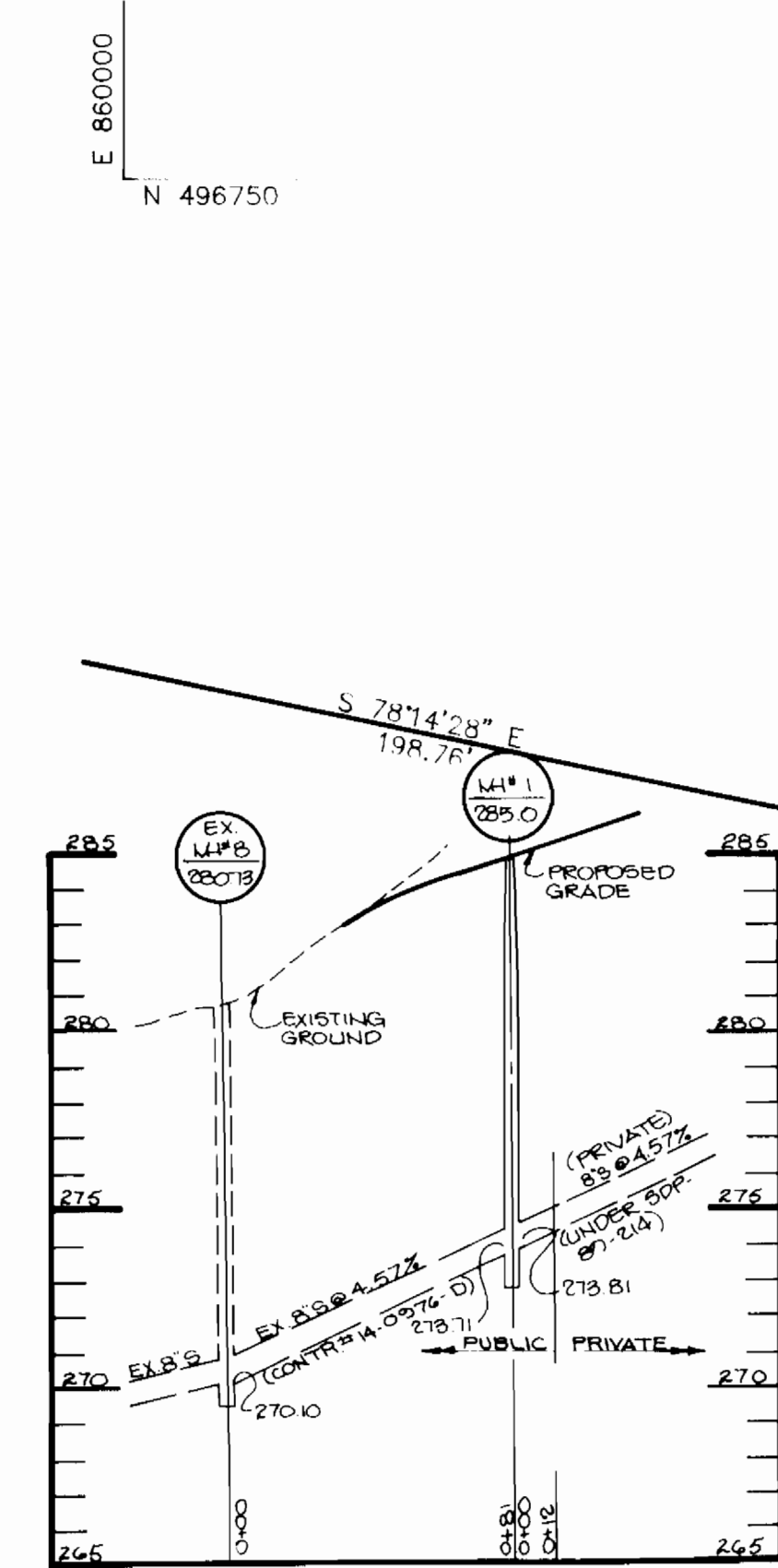
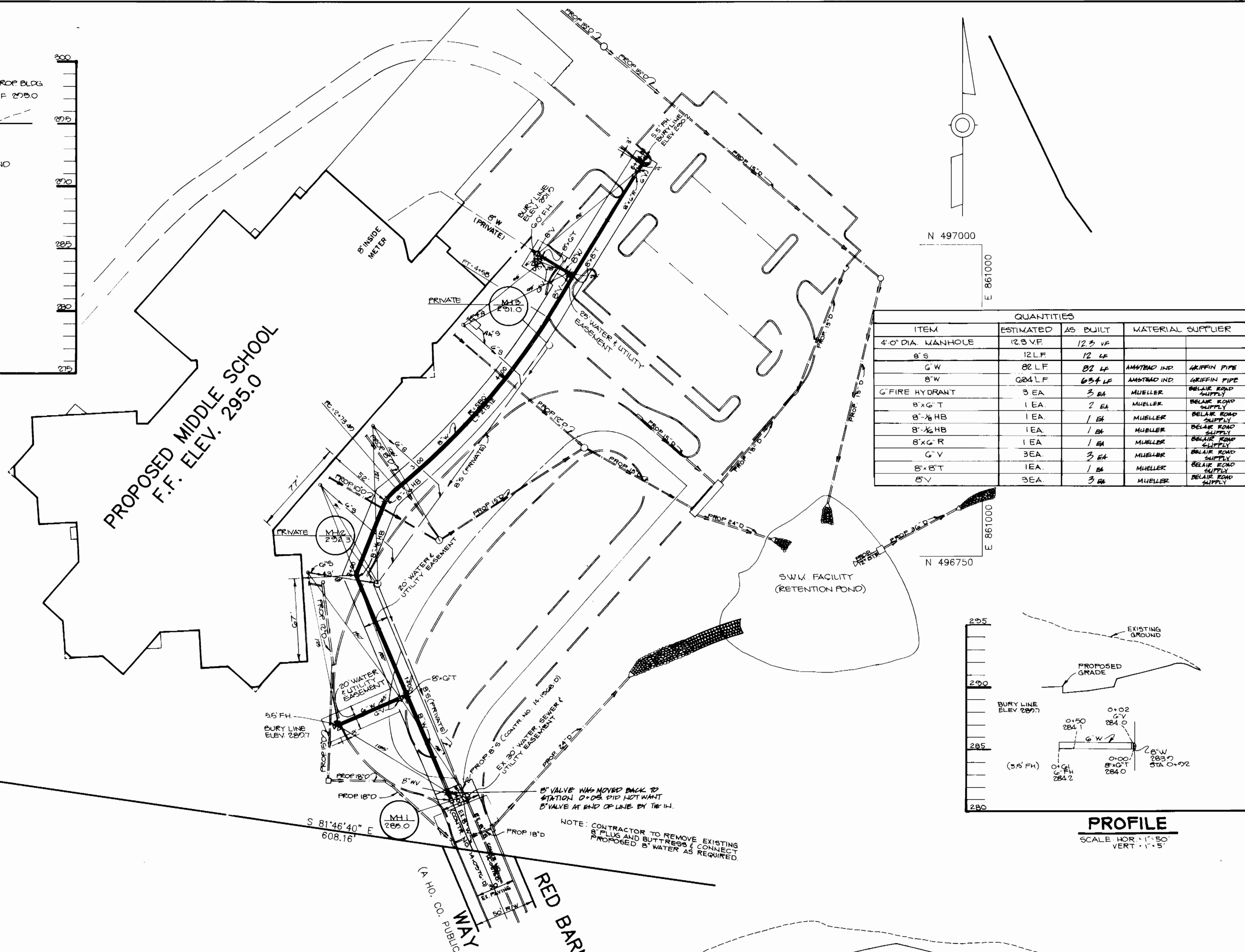


PROFILE
HOR: 1"=50'
VERT: 1"=5'

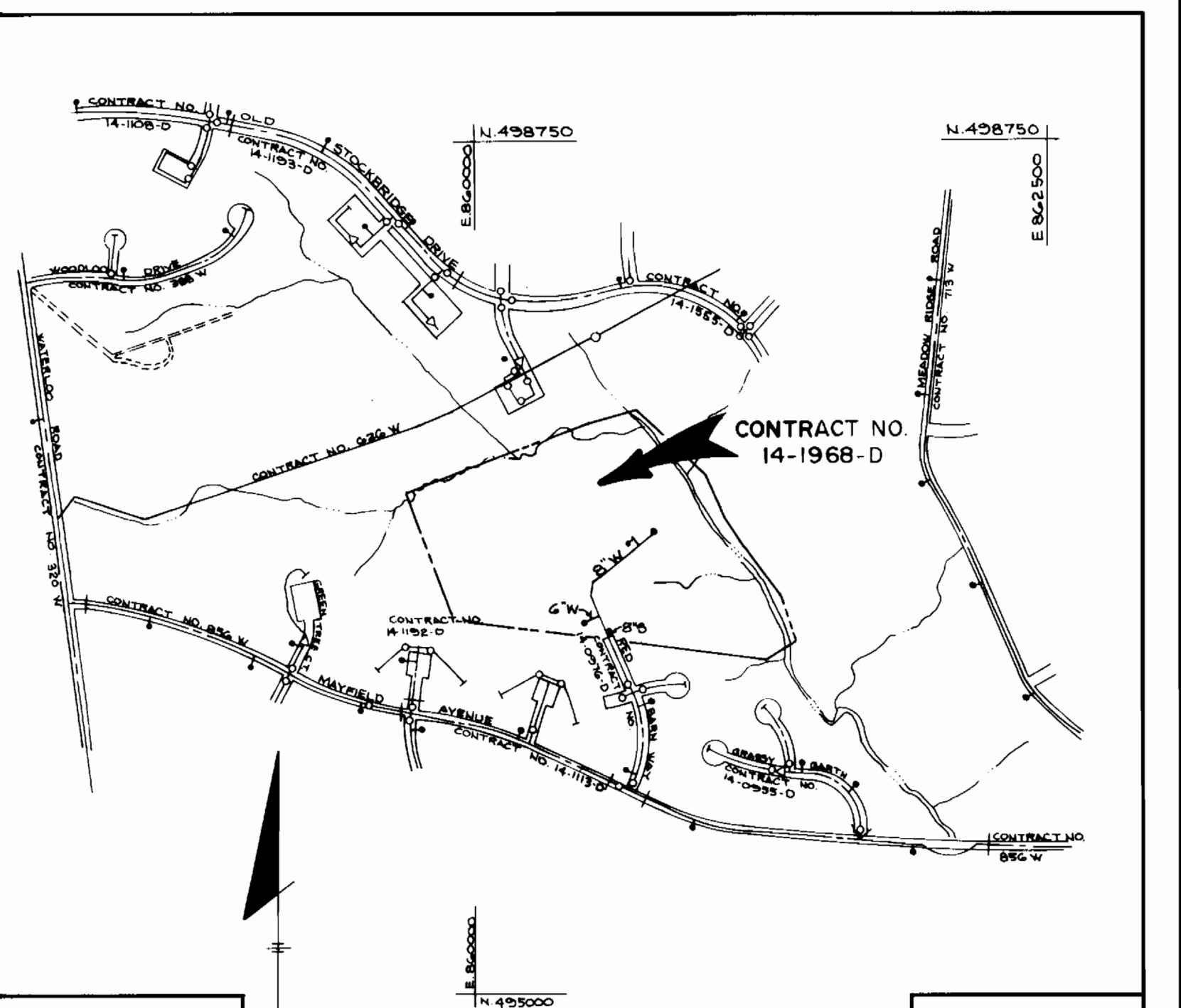


PROFILE
SCALE: HOR: 1"=50'
VERT: 1"=5'



PLAN
SCALE: 1" = 50'

ITEM	ESTIMATED	AS BUILT	MATERIAL SUPPLIER
4'-0" DIA. MANHOLE	12 BV	12 BV	
8" S	12 LF	12 LF	
8" W	82 LF	87 LF	AMTRAC INC. GREEN PIPE
8" W	284 LF	284 LF	AMTRAC INC. GREEN PIPE
G FIRE HYDRANT	3 EA	3 EA	MUELLER BELLE KNOX SUPPLY
8" X T	1 EA	2 EA	MUELLER BELLE KNOX SUPPLY
8" X HB	1 EA	1 EA	MUELLER BELLE KNOX SUPPLY
8" X R	1 EA	1 EA	MUELLER BELLE KNOX SUPPLY
G Y	3 EA	3 EA	MUELLER BELLE KNOX SUPPLY
8" X T	1 EA	1 EA	MUELLER BELLE KNOX SUPPLY
8" X T	3 EA	3 EA	MUELLER BELLE KNOX SUPPLY



VICINITY MAP
SCALE: 1"=600'

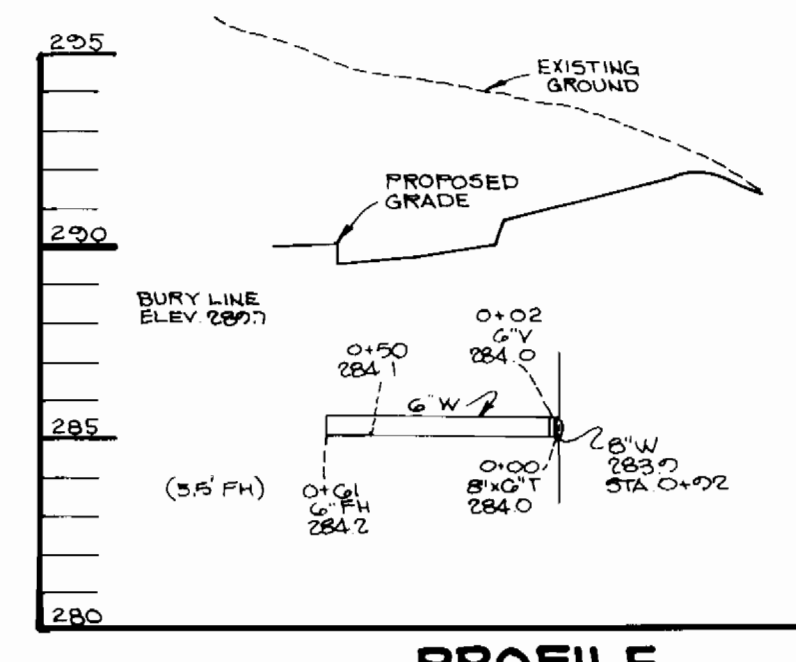
W & S Code
County Use

Water No. D.O.G.
Sewer No. 260000

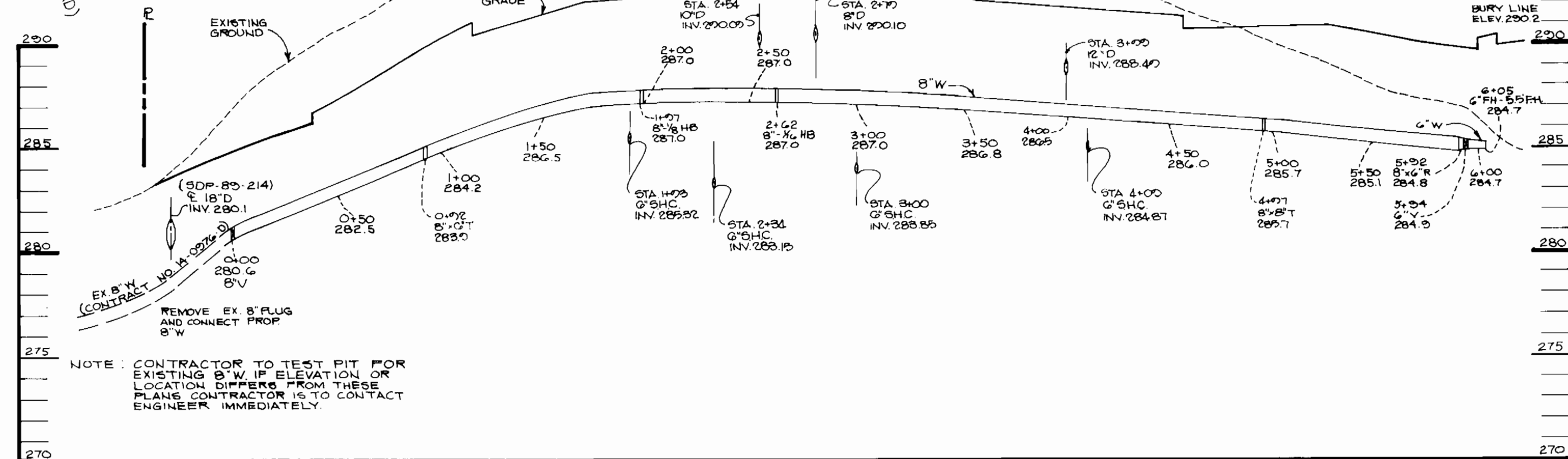
Type of Bldg :
MIDDLE SCHOOL
Drainage Area :
PATAPSCO
No. of W.H.C. - 1
No of S.H.C. - 1

GENERAL NOTES

- APPROXIMATE LOCATION OF EXISTING MAINS ARE SHOWN. THE CONTRACTOR SHALL TAKE ALL NECESSARY PRECAUTIONS TO PROTECT EXISTING MAINS AND SERVICES AND MAINTAIN UNINTERRUPTED SUPPLY. ANY DAMAGE INCURRED SHALL BE REPAIRED IMMEDIATELY TO THE SATISFACTION OF THE ENGINEER AT THE CONTRACTOR'S EXPENSE.
- ALL HORIZONTAL CONTROLS ARE BASED ON MARYLAND STATE COORDINATES.
- ALL VERTICAL CONTROLS ARE BASED ON U.S.G.S. DATA.
- ALL PIPE ELEVATIONS SHOWN ARE \ominus INVERT ELEVATIONS.
- CLEAR ALL UTILITIES BY A MINIMUM OF 6".
- FOR DETAILS NOT SHOWN ON THE DRAWINGS, AND FOR MATERIALS AND CONSTRUCTION METHODS, USE HOWARD COUNTY DESIGN MANUAL, VOLUME IV, 1989 AMENDMENTS STANDARD SPECIFICATIONS AND DETAILS FOR CONSTRUCTIONS. THE CONTRACTOR SHALL HAVE A COPY OF VOLUME IV ON THE JOB.
- WHERE TEST PITS HAVE BEEN MADE ON EXISTING UTILITIES, THEY ARE NOTED BY THE SYMBOL \oplus AT THE LOCATION OF THE TEST PIT. A NOTE OR NOTES CONTAINING THE RESULTS OF THE TEST PIT OR PITS IS INCLUDED ON THE DRAWINGS. EXISTING UTILITIES IN THE VICINITY OF THE PROPOSED WORK FOR WHICH TEST PITS HAVE NOT BEEN DUG SHALL BE VERIFIED BY THE CONTRACTOR TO HIS OWN PERSONAL SATISFACTION. ANY DAMAGE TO EXISTING FACILITIES DUE TO THE CONTRACTOR'S NEGLIGENCE SHALL BE REPAIRED AT THE CONTRACTOR'S EXPENSE.
- THE CONTRACTOR SHALL NOTIFY THE FOLLOWING UTILITIES OR AGENCIES AT LEAST FIVE WORKING DAYS BEFORE STARTING WORK SHOWN ON THESE PLANS:
 - STATE HIGHWAY ADMINISTRATION - 531-5533
 - BALTIMORE GAS AND ELECTRIC CO. - CONTRACTOR SERVICES 850-4620
 - BALTIMORE GAS AND ELECTRIC CO. - UNDERGROUND DAMAGE CONTROL 859-9004
 - BALTIMORE GAS AND ELECTRIC CO. - TROUBLE SHOOTING 298-9001
 - MISS UTILITY 1-559-0100
 - COLONIAL PIPELINE CO. 795-1390
 - BUREAU OF UTILITIES, HO. CO. DEPARTMENT OF PUBLIC WORKS 992-2366
 - C & P TELEPHONE CO. 1-800-257-7777
- TREES AND SHRUBS ARE TO BE PROTECTED FROM DAMAGE TO MAXIMUM EXTENT. TREES AND SHRUBS LOCATED WITHIN THE CONSTRUCTION STRIP ARE NOT TO BE REMOVED OR DAMAGED BY THE CONTRACTOR.
- THE CONTRACTOR SHALL REMOVE TREES, STUMPS AND ROOTS ALONG LINE OF EXCAVATION. PAYMENT FOR SUCH REMOVAL SHALL BE INCLUDED IN THE UNIT PRICE BID FOR CONSTRUCTION OF THE MAIN.
- ALL WATER MAINS TO BE D.I.P. CLASS 52 UNLESS OTHERWISE NOTED.
- TOPS OF ALL WATER MAINS TO HAVE A MINIMUM OF 3-1/2" COVER UNLESS OTHERWISE NOTED.
- VALVES ADJACENT TO TEES SHALL BE STRAPPED TO TEES.
- ALL FITTINGS SHALL BE BUTTRESSED OR ANKORED WITH CONCRETE IN ACCORDANCE WITH THE STANDARD DETAILS UNLESS OTHERWISE PROVIDED FOR ON THE DRAWINGS.
- FIRE HYDRANTS SHALL BE SET TO THE BURY LINE ELEVATION SHOWN ON THE DRAWINGS. ALL FIRE HYDRANTS SHALL BE STRAPPED AND BUTTRESSED WITH CONCRETE IN ACCORDANCE WITH THE STANDARD DETAILS. SOIL AROUND THE FIRE HYDRANT SHALL BE COMPACTED IN ACCORDANCE WITH SECTION 1003 OF THE STANDARD SPECIFICATIONS.
- THE CONTRACTOR SHALL NOT OPERATE ANY WATER MAIN VALVES ON THE EXISTING WATER SYSTEM.
- ALL WATER HOUSE CONNECTIONS SHALL BE FOR INSIDE METER SETTING, UNLESS OTHERWISE NOTED ON THE PLANS OR IN THE SPECIFICATIONS.
- SERVICE CLAMPS ARE TO HAVE STAINLESS STRAPS.
- ALL D.I.P. FITTINGS SHALL BE IN ACCORDANCE WITH A.W.W.A. SPECIFICATIONS C-153 DUCTILE IRON COMPACT FITTINGS, 3" THROUGH 12" FOR WATER AND OTHER LIQUIDS.



PROFILE
SCALE: HOR: 1"=50'
VERT: 1"=5'



PROFILE
SCALE: HOR: 1"=50'
VERT: 1"=5'

- GENERAL NOTES**
- ALL SEWER MAINS SHALL BE C.S.P.X., R.C.S.P., V.C.P.X., OR P.V.C. UNLESS OTHERWISE NOTED.
 - THE CONTRACTOR SHALL PROVIDE A JOINT IN ALL SEWER MAINS WITHIN 2' OF EXTERIOR MANHOLE WALL.
 - ALL MANHOLES SHALL BE 4'-0" INSIDE DIAMETER UNLESS OTHERWISE NOTED.
 - MANHOLES SHOWN WITH 12" AND 16" WALLS ARE FOR BRICK MANHOLES ONLY.
 - MANHOLES DESIGNATED W.T. IN PLAN AND PROFILE SHALL HAVE WATERTIGHT FRAME AND COVERS, STANDARD DETAIL 65.52. WHERE WATERTIGHT MANHOLE FRAME AND COVER IS USED, SET TOP OF FRAME 1'-6" ABOVE FINISHED GRADE UNLESS OTHERWISE NOTED ON THE DRAWINGS.
 - HOUSE(S) WITH THE SYMBOL "C.N.S." INDICATES THAT THE CELLAR CANNOT BE SERVED.

SEDIMENT CONTROL MEASURES FOR THIS CONTRACT WILL BE IMPLEMENTED IN ACCORDANCE WITH SECTION 219 OF THE SPECIFICATIONS AND AS SHOWN ON SDP-89-214

HOWARD SOIL CONSERVATION DISTRICT:

REVIEW FOR HOWARD SOIL CONSERVATION DISTRICT AND MEETS TECHNICAL REQUIREMENTS.

U.S. SOIL CONSERVATION SERVICE

THIS PLAN IS APPROVED FOR SOIL EROSION AND SEDIMENT CONTROL BY THE HOWARD SOIL CONSERVATION DISTRICT.

DEPARTMENT OF PUBLIC WORKS HOWARD COUNTY, MARYLAND Director of Public Works: Robert M. Reimer Date: 9/11/89		RIEMER MUEGGE AND ASSOCIATES, INC. 3105 NORTH RIDGE ROAD ELLICOTT CITY, MARYLAND (301) 461-2690 Chief, Land Development: Arthur E. Muegge Date: 9/19/89		DES: C.J.R. DRN: G.D.H. CHK: DATE: 6-1-89		PLAN AND PROFILE OF A WATER AND SEWER MAIN 600' SCALE MAP NO. 37 BLOCK NO. 15		MAYFIELD WOODS MIDDLE SCHOOL 1st ELECTION DISTRICT HOWARD COUNTY, MARYLAND CONTRACT NO. 14-1968-D SCALE AS SHOWN SHEET 1 OF 1	
---	--	---	--	--	--	--	--	---	--

WATER & SEWER AS-BUILT 7/20/90