

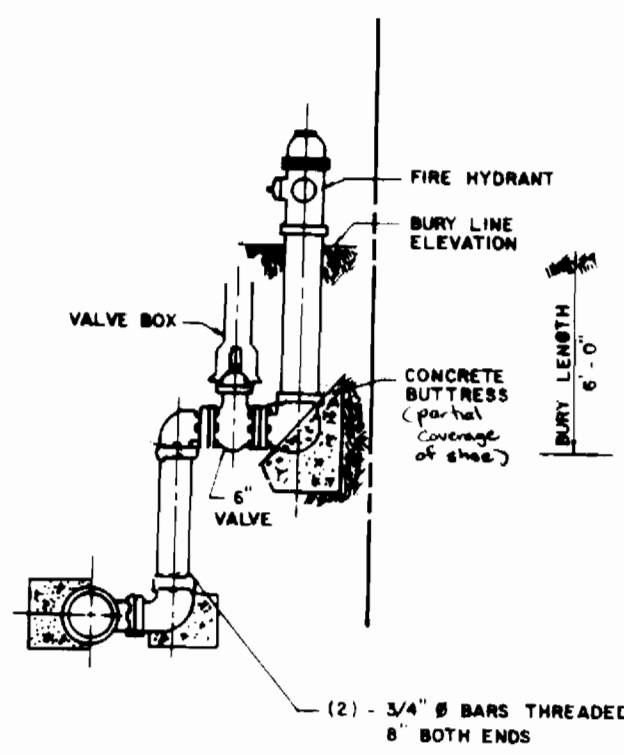
MIDWAY BUSINESS CENTER HOWARD COUNTY, MARYLAND

PART I - GENERAL NOTES

- APPROXIMATE LOCATION OF EXISTING MAINS ARE SHOWN. THE CONTRACTOR SHALL TAKE ALL NECESSARY PRECAUTIONS TO PROTECT EXISTING MAINS AND SERVICES, AND MAINTAIN UNINTERRUPTED SUPPLY. ANY DAMAGE INCURRED SHALL BE REPAIRED IMMEDIATELY TO THE SATISFACTION OF THE ENGINEER AT THE CONTRACTOR'S EXPENSE.
- ALL HORIZONTAL CONTROLS ARE BASED ON MARYLAND STATE COORDINATES.
- ALL VERTICAL CONTROLS ARE BASED ON U.S.G.S. DATA.
- ALL PIPE ELEVATIONS SHOWN ARE INVERT ELEVATIONS.
- CLEAR ALL UTILITIES BY A MINIMUM OF SIX INCHES (6"). CLEAR ALL POLES BY TWO FEET (2') - ZERO INCHES (0") MINIMUM OR TUNNEL AS REQUIRED. THE OWNER HAS CONTACTED THE UTILITY COMPANIES AND HAS MADE ARRANGEMENTS FOR BRACING OF POLES AS SHOWN ON THE DRAWINGS. IN THE EVENT THE CONTRACTOR'S WORK REQUIRES THE BRACING OF ADDITIONAL POLES, ANY COST INCURRED BY THE OWNER FOR THE BRACING OF ADDITIONAL POLES OR DAMAGES SHALL BE DEDUCTED FROM MONEY OWED THE CONTRACTOR. THE CONTRACTOR SHALL COORDINATE WITH THE UTILITY COMPANIES TO SCHEDULE THE BRACING OF THE POLES.
- FOR DETAILS NOT SHOWN ON THE DRAWINGS, AND FOR MATERIALS AND CONSTRUCTION METHODS, USE HOWARD COUNTY DESIGN MANUAL, VOLUME IV, STANDARD SPECIFICATIONS AND DETAILS FOR CONSTRUCTION; 1989 AMENDMENTS. THE CONTRACTOR SHALL HAVE A COPY OF VOLUME IV ON THE JOB.
- WHERE TEST PITS HAVE BEEN MADE ON EXISTING UTILITIES, THEY ARE NOTED BY THE SYMBOL AT THE LOCATION OF THE TEST PIT. A NOTE OR NOTES CONTAINING THE RESULTS OF THE TEST PIT OR PITS IS INCLUDED ON THE DRAWINGS. EXISTING UTILITIES IN THE VICINITY OF THE PROPOSED WORK FOR WHICH TEST PITS HAVE NOT BEEN DUG SHALL BE LOCATED BY THE CONTRACTOR TWO WEEKS IN ADVANCE OF CONSTRUCTION OPERATIONS AT HIS OWN EXPENSE.
- CONTRACTOR SHALL NOTIFY THE FOLLOWING UTILITY COMPANIES OR AGENCIES AT LEAST FIVE WORKING DAYS BEFORE STARTING WORK SHOWN ON THESE PLANS:
STATE HIGHWAY ADMINISTRATION - 531-5533
BALTIMORE GAS & ELECTRIC CO. - CONTRACTOR SERVICES - 850-4620
BALTIMORE GAS & ELECTRIC CO. - UNDERGROUND DAMAGE CONTROL - 859-9004
BALTIMORE GAS & ELECTRIC CO. - TROUBLESHOOTING - 298-9001
MISS UTILITY - 1-559-0100
COLONIAL PIPELINE CO. - 795-1390
BUREAU OF UTILITIES, HOWARD COUNTY DEPT. OF PUBLIC WORKS - 992-2366
- TREES AND SHRUBS ARE TO BE PROTECTED FROM DAMAGE TO MAXIMUM EXTENT. TREES AND SHRUBS LOCATED WITHIN THE CONSTRUCTION STRIP ARE NOT TO BE REMOVED OR DAMAGED BY THE CONTRACTOR.
- CONTRACTOR SHALL REMOVE TREES, STUMPS AND ROOTS ALONG LINE OF EXCAVATION. PAYMENT FOR SUCH REMOVAL SHALL BE INCLUDED IN THE UNIT PRICE BID FOR CONSTRUCTION OF THE MAIN.
- INFORMATION CONCERNING UNDERGROUND UTILITIES WAS OBTAINED FROM AVAILABLE RECORDS. THE CONTRACTOR MUST DETERMINE THE EXACT LOCATIONS AND ELEVATIONS OF THE MAINS BY DIGGING TEST PITS AT ALL UTILITY CROSSINGS WELL IN ADVANCE OF TRENCHING. IF CLEARANCES ARE LESS THAN SHOWN ON THIS PLAN OR SIX INCHES (6"), WHICHEVER IS LESS, CONTACT THE OWNER BEFORE PROCEEDING WITH CONSTRUCTION.
- SEWER ABANDONMENT PROCEDURE & CONSTRUCTION SEQUENCE PROVIDED W/SEWER CONSTRUCTION PLANS, CONTRACT #20-1929-D.

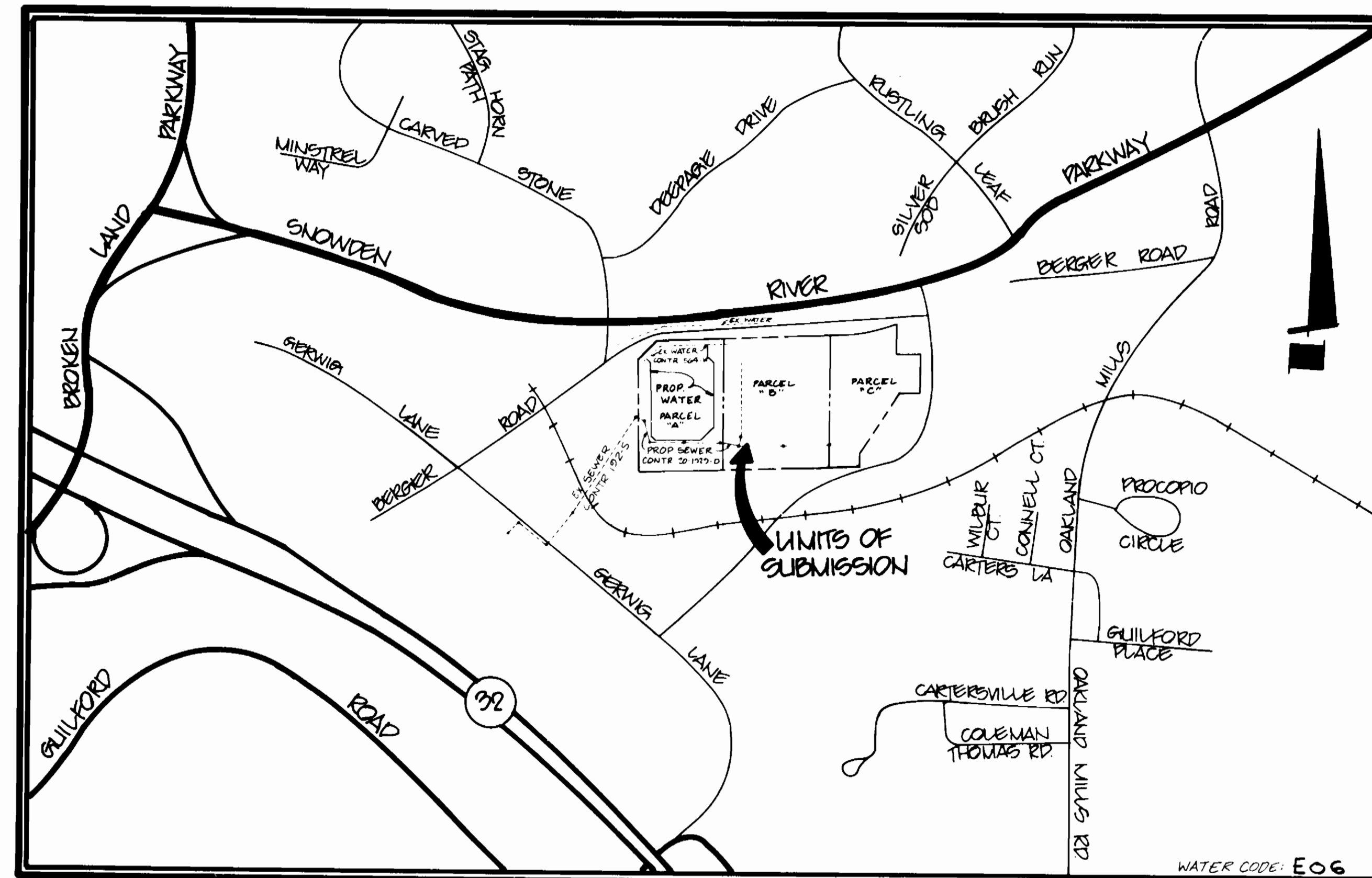
PART II - WATER

- ALL WATER MAINS TO BE D.I.P. CLASS 52 UNLESS OTHERWISE NOTED.
- TOPS OF ALL WATER MAINS TO HAVE A MINIMUM COVER OF THREE AND ONE-HALF FEET (3-1/2') UNLESS OTHERWISE NOTED.
- VALVES ADJACENT TO TEES SHALL BE STRAPPED TO TEES.
- ALL FITTINGS SHALL BE BUTTRESSED OR ANCHORED WITH CONCRETE IN ACCORDANCE WITH THE STANDARD DETAILS UNLESS OTHERWISE PROVIDED FOR ON THE DRAWINGS.
- FIRE HYDRANTS SHALL BE SET TO THE BURY LINE ELEVATIONS SHOWN ON THE DRAWINGS. ALL FIRE HYDRANTS SHALL BE STRAPPED AND BUTTRESSED WITH CONCRETE IN ACCORDANCE WITH STANDARD DETAILS. SOIL AROUND THE FIRE HYDRANT SHALL BE COMPACTED IN ACCORDANCE WITH SECTION 1003 OF THE STANDARD SPECIFICATIONS.
- THE CONTRACTOR SHALL NOT OPERATE ANY WATER MAIN VALVES ON THE EXISTING WATER SYSTEM.
- WATER METER SETTING SHALL BE SET INSIDE BUILDING.



NOTE
APPLY COAL TAR PROTECTIVE COATING TO ALL EXPOSED STEEL PER A.W.W.A. C-203

ALL JOINTS NOT STRAPPED SHALL BE RESTRAINED MECHANICAL JOINT



VICINITY MAP
SCALE: 1" = 600'

TYPE OF BUILDINGS	OFFICE & SERVICE CENTER
NUMBER OF LOTS	
NUMBER OF WATER HOUSE CONNECTIONS	2
NUMBER OF SEWER HOUSE CONNECTIONS	1
DRAINAGE AREA	LITTLE PATENT

CONTRACT NO.44-1953-D WATER CONSTRUCTION PLANS

HOWARD COUNTY, MARYLAND DEPARTMENT OF PUBLIC WORKS	SPECIAL FIRE HYDRANT SETTING	PREPARED W.M.A. DRAWN P.A.B. CHECKED D.M.A.
---	---------------------------------	--

QUANTITIES			
ITEM	ESTIMATED	AS BUILT	MATERIAL/SUPPLIER
8" WATER	2206 L.F.		
8" VALVE	3		
FIRE HYDRANT	7		
6" WATER	222 L.F.		
6" VALVE	7		
16"x8" T.S.#V.	2		

LEGEND	
EXISTING SEWER	---
PROPOSED SEWER	---
EXISTING STORM DRAIN	---
PROPOSED STORM DRAIN	---
EXISTING WATER	---
EXISTING S.L.C.	---
EXISTING RAILROAD TRACKS	---
EXISTING FENCE	---
PROPOSED WATER	---
PROPOSED EASEMENT	---
PROPOSED FIRE HYDRANT	---

SEDIMENT CONTROL MEASURES FOR THIS CONTRACT WILL BE IMPLEMENTED IN ACCORDANCE WITH SECTION 219 OF THE HOWARD COUNTY DESIGN MANUAL AND STANDARDS AND SPECIFICATIONS. SDP-90-19

REVIEWED FOR HOWARD SOIL CONSERVATION DISTRICT AND MEETS TECHNICAL REQUIREMENT
 SIGNATURE: *[Signature]* DATE: 2-14-90

THIS DEVELOPMENT PLAN IS APPROVED FOR SOIL EROSION AND SEDIMENT CONTROL BY THE HOWARD COUNTY CONSERVATION DISTRICT.
 APPROVED: *[Signature]* DATE: 2/4/90
 HOWARD C.D.

DEPARTMENT OF PUBLIC WORKS HOWARD COUNTY, MARYLAND	
<i>[Signature]</i> 2/16/90 DIRECTOR OF PUBLIC WORKS	<i>[Signature]</i> 2-15-90 CHIEF, BUREAU OF ENGINEERING
<i>[Signature]</i> 2-13-90 CHIEF, BUREAU OF UTILITIES	<i>[Signature]</i> 2/15/90 CHIEF, LAND DEVELOPMENT DIVISION

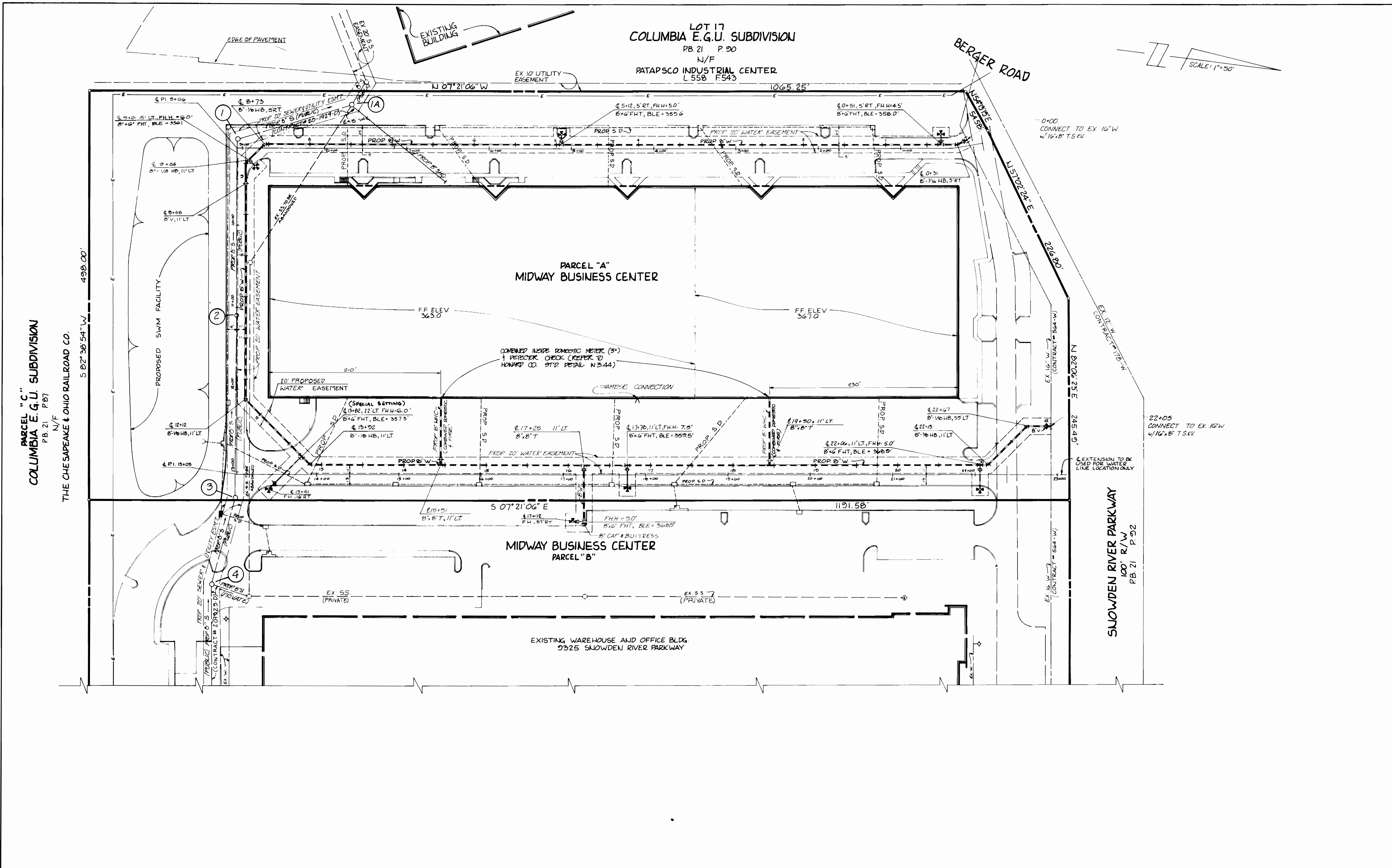
PHRBA
 PATTON, HARRIS, RUST & ASSOCIATES, PC
 7800 STANDISH PLACE
 ROCKVILLE, MARYLAND 20855
 METRO: 301-753-3325 BALT.: 301-43-7244

DES: PDN			
DRN: MR			
CHK:	2	REVISED PER HOWARD COUNTY COMMENTS	8/14/89
DATE:	1	ISSUED TO HO. CO. FOR REVIEW	1/24/89
BY:	NO.	REVISION	DATE

TITLE SHEET	
60' SCALE MAP NO.	BLOCK NO.

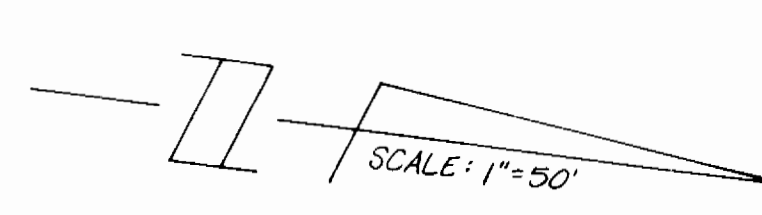
CONTRACT NO.44-1953-D	
PARCEL A MIDWAY BUSINESS CENTER	
FORMERLY E.G.U. SUBDIVISION SECTION 1, AREA 1	
6th ELECTION DISTRICT HOWARD COUNTY, MARYLAND	
SCALE AS SHOWN	SHEET 1 OF 3

BRUNING 68150



LOT 17
 COLUMBIA E.G.U. SUBDIVISION
 PB. 21 P. 90
 N/F
 PATAPSCO INDUSTRIAL CENTER
 L 558 F 543

PARCEL "C"
 COLUMBIA E.G.U. SUBDIVISION
 PB. 21 P. 87
 N/F
 THE CHE SAPEAKE & OHIO RAILROAD CO.



SNOWDEN RIVER PARKWAY
 100' R/W
 PB. 21 P. 92

CONTRACT NO. 44-1953-D
MIDWAY BUSINESS CENTER
 COLUMBIA E.G.U. SUBDIVISION, 1/1
 P.B. 21 FOLIO 92 TAX MAP NO. 42
 SIXTH ELECTION DISTRICT
 HOWARD COUNTY, MARYLAND

DEPARTMENT OF PUBLIC WORKS
 HOWARD COUNTY, MARYLAND

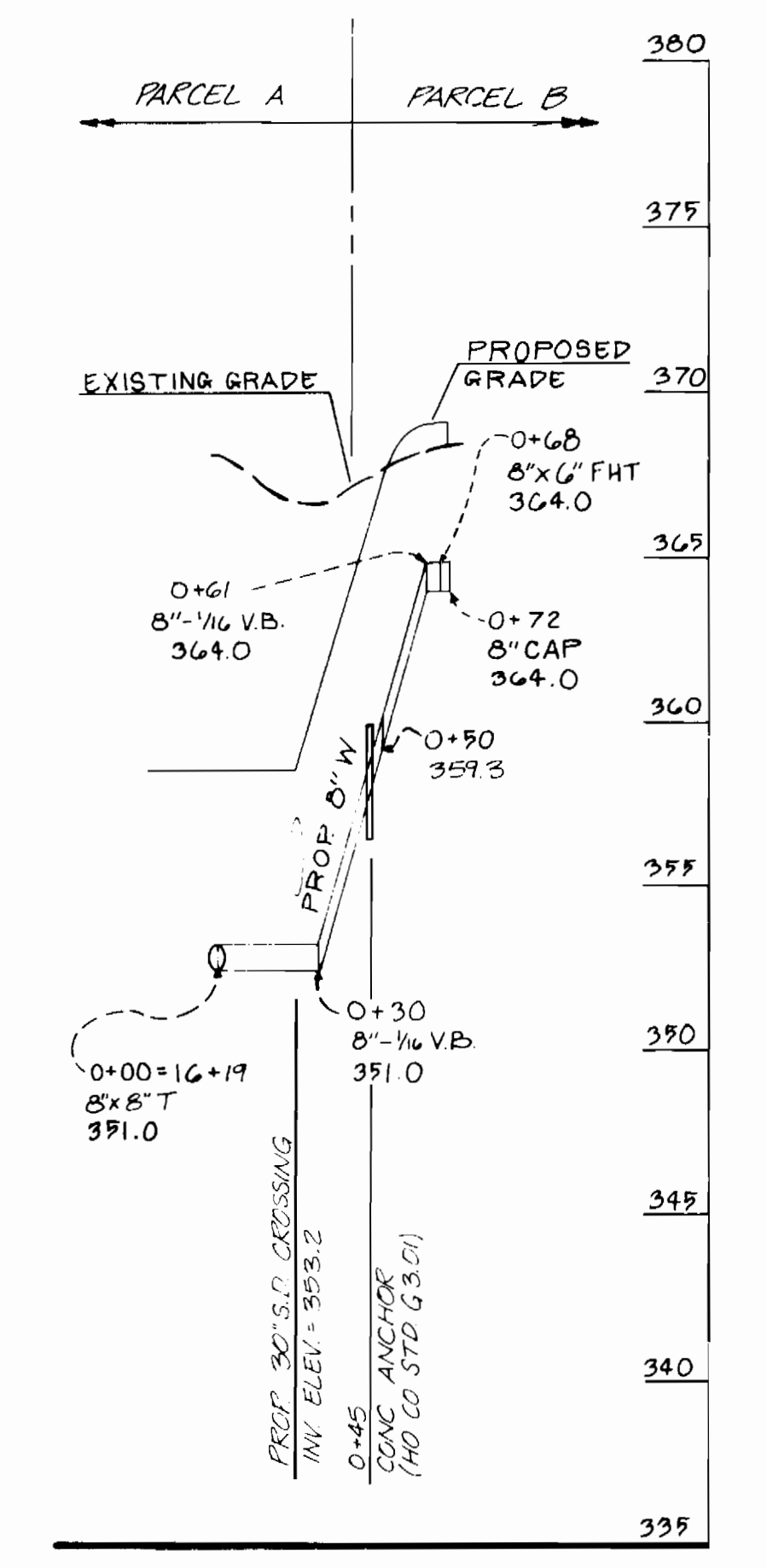
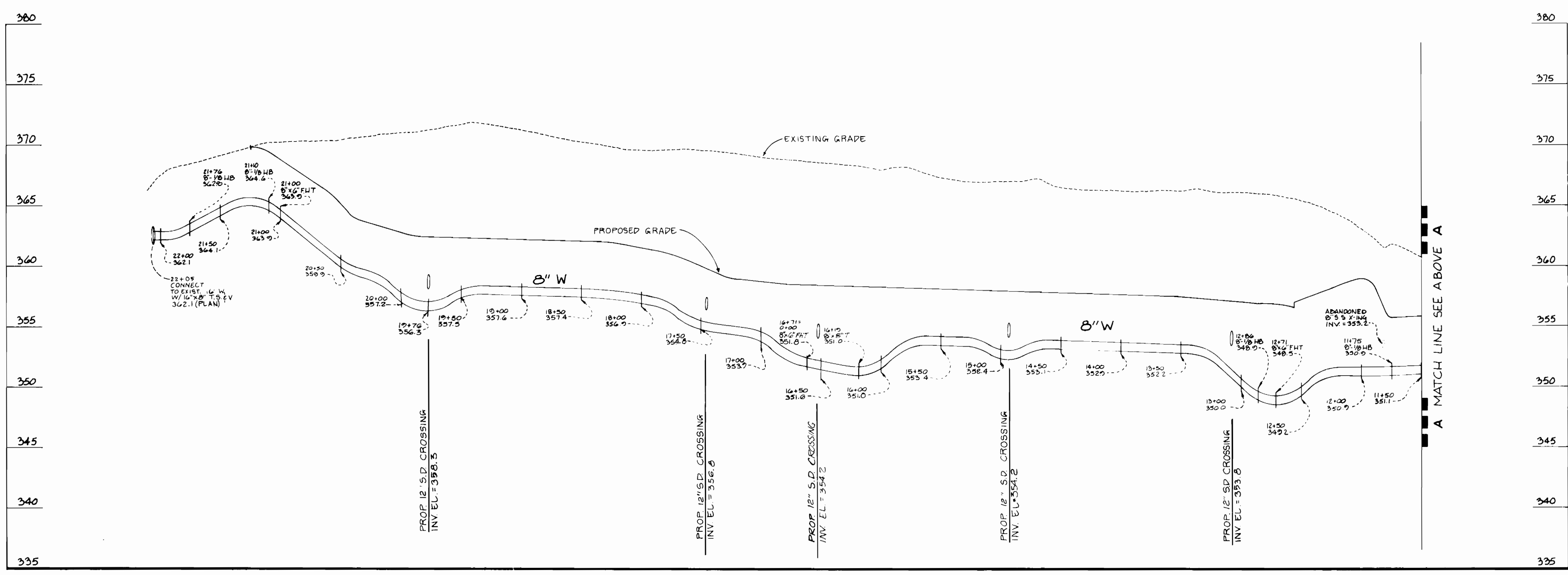
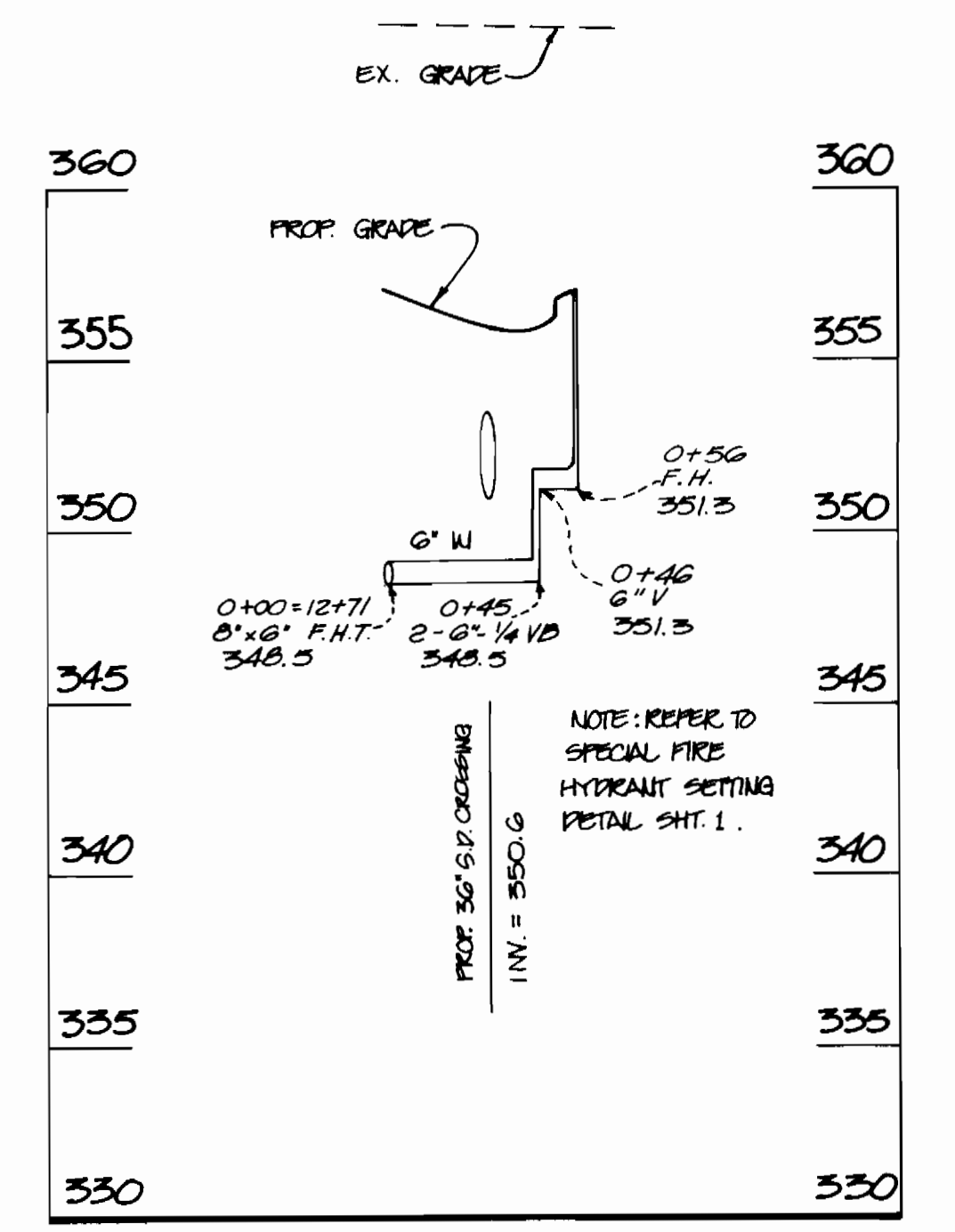
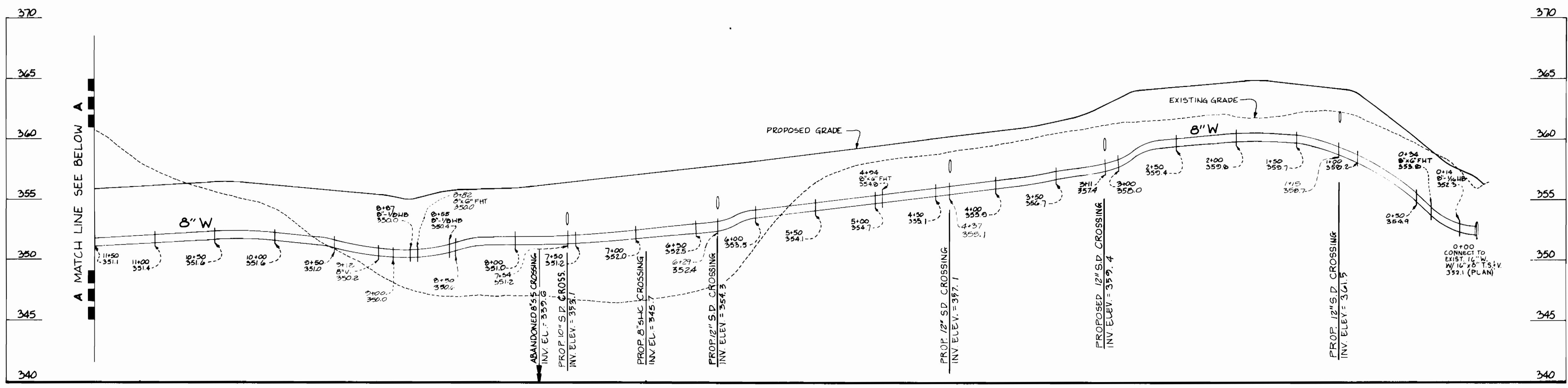
Director of Public Works: *James P. ...* 2/16/90
 Chief, Bureau of Engineering: *Richard ...* 2/15/90
 Chief, Bureau of Utilities: *Robert M. ...* 2-12-90
 Chief, Land Development Division: *Richard ...* 2/15/90

PHR&A
 PATTON, HARRIS, RUST & ASSOCIATES, P.C.
 7608 STANDISH PLACE
 ROCKVILLE, MARYLAND 20858
 METRO: 301-763-2226 BALT.: 301-763-7294

DES:	PDN				
DRN:	VP				
CHK:		3	REVISED FH'S @ 13+82 & 17+70	1/16/90	
		2	REVISED PER HO. CO. COMMENTS	8/14/89	
		1	ISSUED TO HO. CO. FOR REVIEW	7/24/89	
DATE:	7/11/89	BY:	NO.	REVISION	DATE

PLAN
WATER MAIN

SCALE AS SHOWN
 SHEET 2 OF 3



CONTRACT NO. 44-1953-D SCALE: HOR: 1"=50' VER: 1"=5'

DEPARTMENT OF PUBLIC WORKS
HOWARD COUNTY, MARYLAND

Director of Public Works: Robert M. Bevington, 2-12-90
Chief, Bureau of Utilities

Chief, Bureau of Engineering: [Signature], 2-15-90
Chief, Land Development Division

PHR&A
PATTON, HARRIS, RUST & ASSOCIATES, PC
7409 STANDISH PLACE
ROCKVILLE, MARYLAND 20855
METRO: 301-762-2220 BALTY.: 301-762-7244

[Signature]

DES:	PN		
DRN:	VLP		
CHK:		3	REVISED PH. @ B+02 + 17+70
		2	REVISED PER H.C. COMMENTS
		1	ISSUED TO 'D.C.O. FOR REVIEW
DATE:			
BY:	NO.	REVISION	DATE

PROFILE WATER MAIN

600' SCALE MAP NO. _____ BLOCK NO. _____

MIDWAY BUSINESS CENTER
FORMERLY
E.G.U. SUBDIVISION SECTION 1, AREA 1
6TH ELECTION DISTRICT
HOWARD COUNTY, MARYLAND

SCALE AS SHOWN
SHEET 3 OF 3