

### QUANTITIES

ITEM	ESTIMATED	AS-BUILT	MATERIAL / SUPPLIER
8" x 8" TAPPING SLEEVE (VALVE)	1	1 EA	MUELLER - Belair Road Supply
8" x 6" TEE	2	2 EA	Goffin Pipe
8" VALVE	1	1 EA	MUELLER
8" CAP & BUTTRESS	1	1 EA	Goffin Pipe
6" VALVE	2	2 EA	MUELLER
8" D.I.P.	356 LF	356 LF	Goffin Pipe
6" D.I.P.	35 LF	33.5 LF	Goffin Pipe
2" TAPPED TEE	2	3 EA	Goffin Pipe
2" COPPER PIPE	42 LF	42 LF	Orange Boro
2" 1/2 BEND	1	-	-
2" VALVE	3	3 EA	MUELLER - Belair Road Supply
F.H.	2	2 EA	MUELLER
8" SANITARY MANHOLE	4	3 EA	ATLANTIC CONCRETE - Atlantic Concrete
8" SANITARY SEWER	802 LF	797 LF	J.M. MANUEL - Belair Road Supply
2" CURB STOPS	2	3 EA	AMAZED ZEPHYRUS - Belair Rd Supply

**NOTE:**  
ALL 8" DIA TO BE BUILT IN ACCORDANCE WITH HOWARD COUNTY STD. DETAIL W-9/21

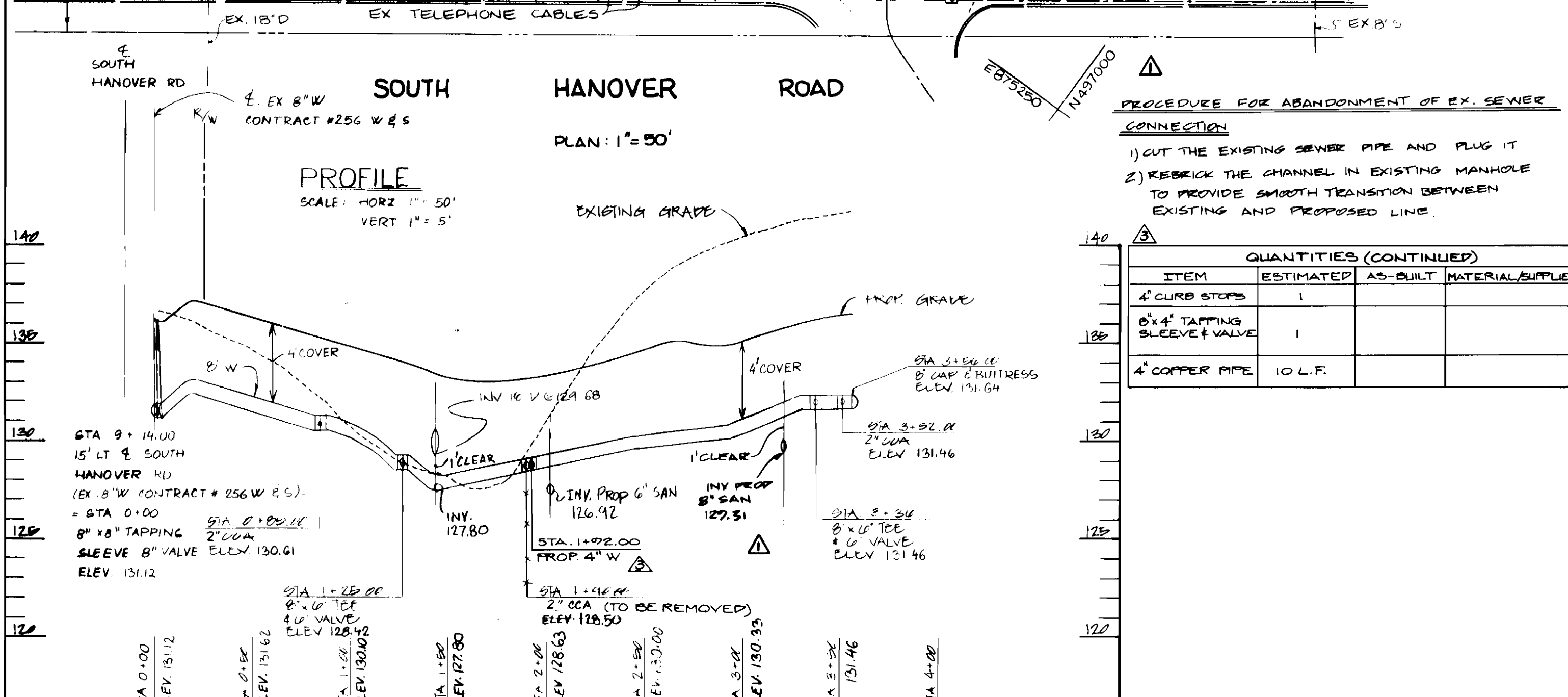
- ### GENERAL NOTES
- APPROXIMATE LOCATION OF EXISTING MAINS ARE SHOWN. THE CONTRACTOR SHALL TAKE ALL NECESSARY PRECAUTIONS TO PROTECT EXISTING MAINS AND SERVICE AND MAINTAIN UNINTERRUPTED SUPPLY. ANY DAMAGE INCURRED SHALL BE REPAIRED IMMEDIATELY TO THE SATISFACTION OF THE ENGINEER AT THE CONTRACTOR'S EXPENSE.
  - ALL HORIZONTAL CONTROLS ARE BASED ON MARYLAND STATE COORDINATES.
  - ALL VERTICAL CONTROLS ARE BASED ON U.S.G.S. DATA.
  - ALL PIPE ELEVATIONS ARE INVERT ELEVATIONS.
  - CLEAR ALL UTILITIES BY A MINIMUM OF 6". CLEAR ALL POLES BY 2'-0" MINIMUM OR TUNNEL AS REQUIRED. THE OWNER HAS CONTACTED THE UTILITY COMPANIES AND HAS MADE ARRANGEMENTS FOR BRACING OF POLES AS SHOWN ON THE DRAWINGS. IN THE EVENT THE CONTRACTOR'S WORK REQUIRES THE BRACING OF ADDITIONAL POLES, ANY COST INCURRED BY THE OWNER FOR THE BRACING OF ADDITIONAL POLES, OR DAMAGE SHALL BE DEDUCTED FROM THE MONEY OWED TO THE CONTRACTOR. THE CONTRACTOR SHALL COORDINATE WITH THE UTILITY COMPANIES TO SCHEDULE THE BRACING OF POLES.
  - FOR DETAILS NOT SHOWN ON THE DRAWINGS, AND FOR MATERIALS AND CONSTRUCTION METHODS, USE HOWARD COUNTY DESIGN MANUAL, VOL. IV, STANDARD SPECIFICATIONS AND DETAILS FOR CONSTRUCTION 1985 AMENDMENTS.
  - WHERE TEST PITS HAVE BEEN MADE ON EXISTING UTILITIES THEY ARE NOTED BY THE SYMBOL. AT THE LOCATION OF THE TEST PIT, A NOTE OR NOTES CONTAINING RESULTS OF THE TEST PITS IS INCLUDED ON THE DRAWINGS. EXISTING UTILITIES IN THE VICINITY OF THE PROPOSED WORK FOR WHICH TEST PITS HAVE NOT BEEN DUG SHALL BE LOCATED BY THE CONTRACTOR TWO WEEKS IN ADVANCE OF CONSTRUCTION OPERATIONS AT HIS OWN EXPENSE.
  - CONTRACTOR SHALL NOTIFY THE FOLLOWING UTILITIES OR AGENCIES AT LEAST FIVE WORKING DAYS BEFORE STARTING WORK SHOWN ON THESE PLANS: STATE HIGHWAY ADMINISTRATION 531-5533, BALTO. GAS & ELECTRIC COMPANY - CONTRACTOR SERVICES 850-4620, BALTO. GAS & ELECTRIC COMPANY - UNDERGROUND DAMAGE CONTROL 859-9004, BALTO. GAS & ELECTRIC COMPANY - TROUBLE SHOOTING 296-9001, MISS UTILITY 1-(301) 559-0100, COLONIAL PIPELINE 795-1380 BUREAU OF UTILITIES, HOWARD COUNTY DEPT. OF PUBLIC WORKS 293-4400, C & P TELEPHONE 1-(800) 257-7777.
  - TREES AND SHRUBS ARE TO BE PROTECTED FROM DAMAGE TO MAXIMUM EXTENT. TREES AND SHRUBS LOCATED WITHIN THE CONSTRUCTION STRIP ARE NOT TO BE DAMAGED OR REMOVED BY THE CONTRACTOR.
  - CONTRACTOR SHALL REMOVE TREES, STUMPS, AND ROOTS ALONG THE LINE OF EXCAVATION. PAYMENT FOR SUCH REMOVAL SHALL BE INCLUDED IN THE UNIT PRICE BID FOR CONSTRUCTION OF THE MAIN.
  - PLACE REGULATION "MEN WORKING" WARNING SIGNS AS REQUIRED TO COMPLY WITH MARYLAND STATE HIGHWAY ADMINISTRATION MANUAL FOR HIGHWAY CONSTRUCTION AND MAINTENANCE OPERATIONS.

### LOCATION MAP

SCALE: 1" = 600'

TYPE OF BUILDING - OFFICE / WAREHOUSE / SHOP	BENCH MARK
NUMBER OF PARCELS - 2	C.W.S. B.M. #1 - ELEV. 141.56
NUMBER OF WATER H.C. - 3	IRON PIN WITH CAP (K.C.I.) ON P.O.L. SET 150' FROM NW PROP. CORNER
NUMBER OF SEWER H.C. - 3	C.W.S. B.M. #2 - ELEV. 142.92
DRAINAGE AREA - DEEP RUN	IRON PIN WITH CAP (K.C.I.) SET IN N.W. CORNER OF LOT
WATER CODE - A01	
SEWER CODE - 215 0518	

**NOTE:** COORDINATES SHOWN HEREON BASED ON THE PLAN ENTITLED "PARCELS 'A' & 'B', EVELYN SILVER SUBDIVISION" RECORDED AMONG THE LAND RECORDS OF HO. CO., MD IN PLAT BOOK 7595



**PROCEDURE FOR ABANDONMENT OF EX. SEWER CONNECTION**  
 1) CUT THE EXISTING SEWER PIPE AND PLUG IT  
 2) REBRICK THE CHANNEL IN EXISTING MANHOLE TO PROVIDE SMOOTH TRANSITION BETWEEN EXISTING AND PROPOSED LINE.

### QUANTITIES (CONTINUED)

ITEM	ESTIMATED	AS-BUILT	MATERIAL / SUPPLIER
4" CURB STOPS	1	-	-
8" x 4" TAPPING SLEEVE (VALVE)	1	-	-
4" COPPER PIPE	10 LF	-	-

REVIEWED FOR HOWARD SOIL CONSERVATION DISTRICT AND METS TECHNICAL REQUIREMENTS  
 DATE: 7/6/89  
 ENGINEER: GEORGE WM. STEPHENS, JR. AND ASSOCIATES, INC.  
 303 ALLEGHENY AVE. TOWSON, MD 21204  
 (301) 825-8120

THIS DEVELOPMENT PLAN IS APPROVED FOR SOIL EROSION & SEDIMENT CONTROL BY THE HOWARD SOIL CONSERVATION DISTRICT  
 DATE: 7-6-89

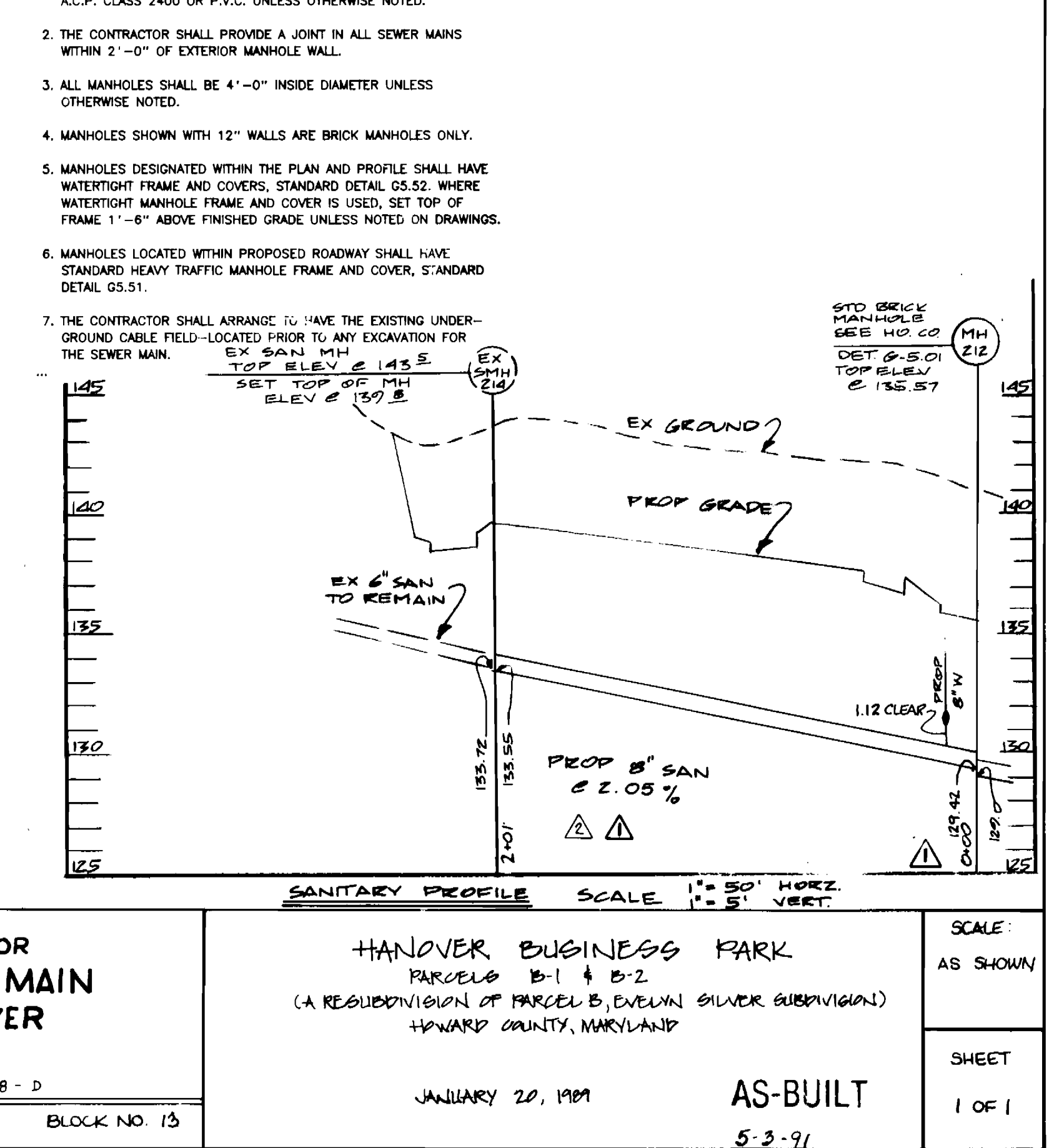
SEDIMENT CONTROL MEASURES FOR THIS CONTRACT WILL BE IMPLEMENTED IN ACCORDANCE WITH SECTION 219 OF THE STANDARDS SPECIFICATIONS AND SDP - 89-139 F-89-133

DESIGNED: I.R.Z.  
 DRAWN: C.W.G. III / D.P.  
 CHECKED: I.R.Z.

BY	NO	REVISION	DATE
I.R.Z.	1	RELOCATED SEWER LINE, REVISED SEWER PROFILE, ELIMINATED STREAM DRAINS, ADDED EASEMENT, REVISED QUANTITIES, ADDED PROCEDURE FOR EX SAN. ABANDONMENT	8/6/88
I.R.Z.	2	RELOCATED SAN MH 212, ELIMINATED SMH 213, RELOCATE CONNECTION TO BUILDING 'B', SHORTENED BUILDING 'B' REVISION WATER LOCATION TO BLDG. 'A'	3/26/91
G.W.G.	3		6/2/94

DEPARTMENT OF PUBLIC WORKS  
 DIRECTOR OF PUBLIC WORKS: [Signature]  
 CHIEF, BUREAU OF UTILITIES: [Signature]  
 DATE: 7/10/89

CHIEF, BUREAU OF ENGINEERING: [Signature]  
 CHIEF, LAND DEVELOPMENT DIVISION: [Signature]  
 DATE: 7/10/89



**PLAN AND PROFILE FOR PROPOSED WATER MAIN AND SANITARY SEWER**

CONTRACT NO. 14-1948-D  
 600' SCALE MAP NO. 38  
 BLOCK NO. 13

HANOVER BUSINESS PARK  
 PARCELS B-1 & B-2  
 (A RESUBDIVISION OF PARCEL B, EVELYN SILVER SUBDIVISION)  
 HOWARD COUNTY, MARYLAND

JANUARY 20, 1989  
 AS-BUILT  
 5-3-91  
 4-22-93

SCALE: AS SHOWN  
 SHEET 1 OF 1