

- ### PART I - GENERAL NOTES
- APPROXIMATE LOCATION OF EXISTING MAINS ARE SHOWN. THE CONTRACTOR SHALL TAKE ALL NECESSARY PRECAUTIONS TO PROTECT EXISTING MAINS AND SERVICES AND MAINTAIN UNINTERRUPTED SUPPLY. ANY DAMAGE INCURRED SHALL BE REPAIRED IMMEDIATELY TO THE SATISFACTION OF THE ENGINEER AT THE CONTRACTOR'S EXPENSE.
 - ALL HORIZONTAL CONTROLS ARE BASED ON MARYLAND STATE COORDINATES.
 - ALL VERTICAL CONTROLS ARE BASED ON U.S.G.S. DATA.
 - ALL PIPE ELEVATIONS SHOWN ARE INVERT ELEVATIONS.
 - CLEAR ALL UTILITIES BY A MINIMUM OF 6 INCHES.
 - FOR DETAILS NOT SHOWN ON THE DRAWINGS, AND FOR MATERIALS AND CONSTRUCTION METHODS, USE HOWARD COUNTY DESIGN MANUAL, VOLUME IV, STANDARD SPECIFICATIONS AND DETAILS FOR CONSTRUCTION. THE CONTRACTOR SHALL HAVE A COPY OF VOLUME IV ON THE JOB.
 - WHERE TEST PITS HAVE BEEN MADE ON EXISTING UTILITIES, THEY ARE NOTED BY THE SYMBOL AT THE LOCATION OF THE TEST PIT, A NOTE OR NOTES CONTAINING THE RESULTS OF THE TEST PIT OR PITS IS INCLUDED ON THE DRAWINGS. EXISTING UTILITIES IN THE VICINITY OF THE PROPOSED WORK FOR WHICH TEST PITS HAVE NOT BEEN DUG SHALL BE VERIFIED BY THE CONTRACTOR TO HIS OWN SATISFACTION. ANY DAMAGE TO EXISTING FACILITIES DUE TO THE CONTRACTOR'S NEGLIGENCE SHALL BE REPAIRED AT THE CONTRACTOR'S EXPENSE.
 - CONTRACTOR SHALL NOTIFY THE FOLLOWING UTILITIES OR AGENCIES AT LEAST FIVE WORKING DAYS BEFORE STARTING WORK SHOWN ON THESE PLANS:
 - STATE HIGHWAY ADMINISTRATION - 531-5933
 - BUREAU OF UTILITIES, HOWARD COUNTY DEPARTMENT OF PUBLIC WORKS - 992-2366
 - BALTIMORE GAS & ELECTRIC CO. - CONTRACTOR SERVICES 561-2585
 - BALTIMORE GAS & ELECTRIC CO. UNDERGROUND DAMAGE CONTROL - 234-5621
 - BALTIMORE GAS & ELECTRIC CO. TROUBLE SHOOTING - 298-9013
 - MSS UTILITY - 1-558-0100
 - COLONIAL PIPELINE CO. - 795-1390
 - TREES AND SHRUBS ARE TO BE PROTECTED FROM DAMAGE TO MAXIMUM EXTENT. TREES AND SHRUBS LOCATED WITHIN THE CONSTRUCTION STRIP ARE NOT TO BE REMOVED OR DAMAGED BY THE CONTRACTOR.
 - CONTRACTOR SHALL REMOVE TREES, STUMPS AND ROOTS ALONG LINE OF EXCAVATION. PAYMENT FOR SUCH REMOVAL SHALL BE INCLUDED IN THE UNIT PRICE BID FOR CONSTRUCTION OF THE MAIN.

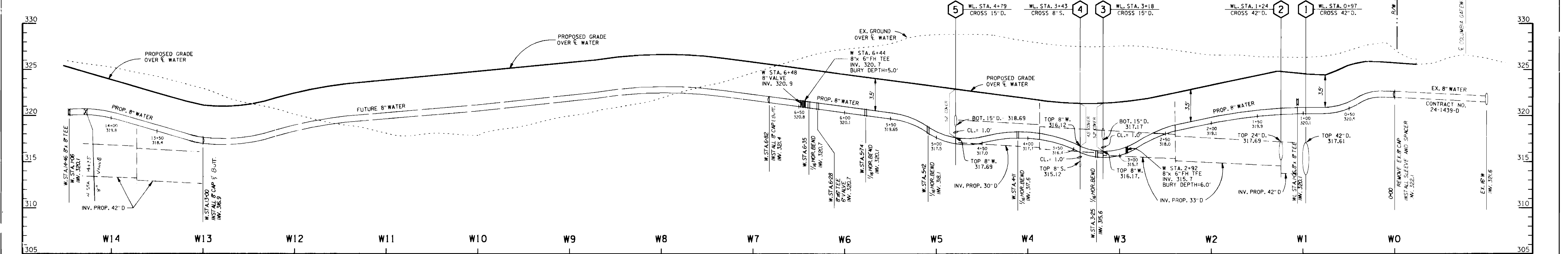
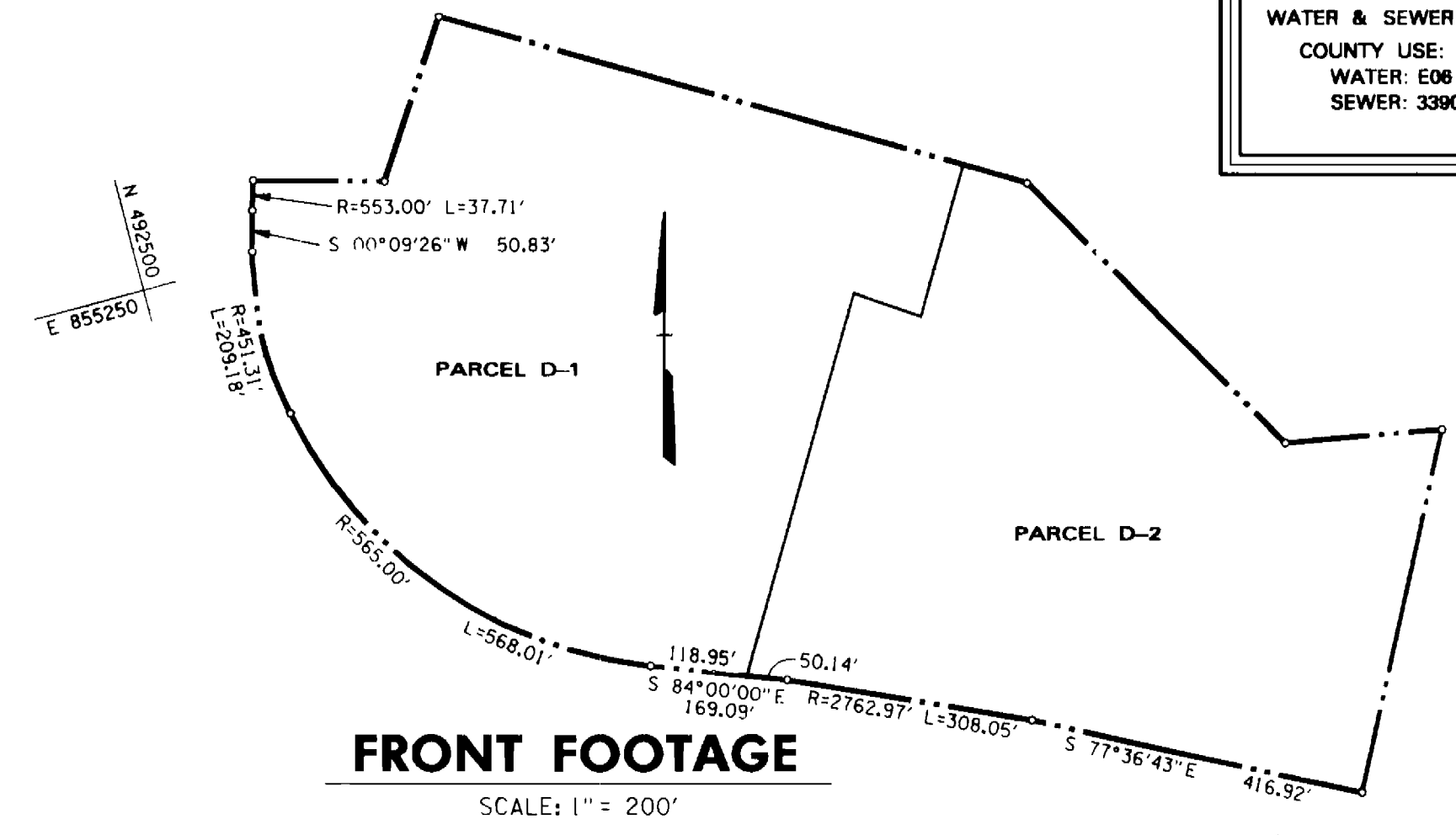
- ### PART II - WATER
- ALL WATER MAINS TO BE D.I.P. CLASS 52 UNLESS OTHERWISE NOTED.
 - TOPS OF ALL WATER MAINS TO HAVE A MINIMUM OF 3-1/2" COVER UNLESS OTHERWISE NOTED.
 - VALVES ADJACENT TO TEES SHALL BE STRAPPED TO TEES.
 - ALL FITTINGS SHALL BE BUTTRESSED OR ANCHORED WITH CONCRETE IN ACCORDANCE WITH THE STANDARD DETAILS UNLESS OTHERWISE PROVIDED FOR ON THE DRAWINGS.
 - FIRE HYDRANTS SHALL BE SET TO THE BURY LINE ELEVATIONS SHOWN ON THE DRAWINGS. ALL FIRE HYDRANTS SHALL BE STRAPPED AND BUTTRESSED WITH CONCRETE IN ACCORDANCE WITH STANDARD DETAILS. SOIL AROUND THE FIRE HYDRANT SHALL BE COMPACTED IN ACCORDANCE WITH SECTION 1003 OF THE STANDARD SPECIFICATIONS.
 - THE CONTRACTOR SHALL NOT OPERATE ANY WATER MAIN VALVES ON THE EXISTING WATER SYSTEM.
 - ALL WATER HOUSE CONNECTIONS SHALL BE FOR INSIDE METER SETTING, UNLESS OTHERWISE NOTED ON THE PLANS OR IN THE SPECIFICATIONS.
 - ALL D.I.P. FITTINGS SHALL BE IN ACCORDANCE WITH A.N.W.M.A. SPECIFICATION C-153 DUCTILE IRON COMPACT FITTINGS, 3 INCH THROUGH 12 INCH FOR WATER AND OTHER LIQUIDS.
 - ALL WATER METERS WILL BE LOCATED INSIDE THE BUILDINGS.

WATERSHED DISPOSAL SAVAGE
DRAINAGE AREA: DORSEY RUN
TYPE OF BUILDINGS: COMMERCIAL
NO. SHC: 0
NO. WHC: 1
NO. OF PARCELS: 2
WATER & SEWER CODE
COUNTY USE:
WATER: E06
SEWER: 3390000

VICINITY MAP
SCALE: 1" = 600'

BENCH MARKS

- W. R. & A. B.M. - IRON PIPE, 240 FEET RIGHT OF C. STA. 15+00 COLUMBIA GATEWAY DRIVE ELEV. 338.29
- W. R. & A. B.M. - IRON PIPE, 230 FEET RIGHT OF C. STA. 34+30 COLUMBIA GATEWAY DRIVE ELEV. 315.29



QUANTITIES			
ITEM	ESTIMATED	AS BUILT	MATERIAL/SUPPLIER
8" DIP	828 LF.		
6" DIP	40 LF.		
FIRE HYDRANT	2 EACH + 1 RELOC.		
8" VALVE	3 EA.		
6" VALVE	1 EA.		
6" W.H.C.	10 LF.		

PROFILE

SCALE: HORIZ.: 1" = 50'
VERT.: 1" = 5'

CURVE DATA

FROM C. STA.	TO C. STA.	DELTA	R	L	T	CHD.
3+65.84	6+01.46	90°00'00"	150.00'	235.62'	150.00'	N 53°08'11" E 212.13'
1+88.22	3+28.84	53°42'43"	150.00'	140.62'	75.96'	N 18°43'11" W 135.52'
0+29.30	1+88.22	30°21'08"	300.00'	158.92'	81.37'	N 60°45'07" W 157.07'
0+00	0+29.30	05°56'08"	300.00'	29.30'	14.66'	N 78°53'45" W 29.29'
1+88.70	13+47.63	30°21'08"	300.00'	158.92'	81.37'	N 77°01'28" W 157.07'
10+48.08	11+88.70	53°42'43"	150.00'	140.62'	75.96'	S 34°59'31" W 135.52'

REFERENCE FILES:
F-89-117
SDP-89-124

REVIEWED FOR HOWARD SOIL CONSERVATION DISTRICT AND MEETS TECHNICAL REQUIREMENT

[Signature]
SIGNATURE

3/1/89
DATE

THIS DEVELOPMENT PLAN IS APPROVED FOR SOIL EROSION AND SEDIMENT CONTROL BY THE HOWARD COUNTY CONSERVATION DISTRICT.

APPROVED

HOWARD S.C.D. DATE

SEDIMENT CONTROL MEASURES FOR THIS CONTRACT WILL BE IMPLEMENTED IN ACCORDANCE WITH THIS PLAN, WITH ARTICLE 15 OF THE STANDARD SPECIFICATIONS, AND SEDIMENT CONTROL PLAN SDP-89-124, SDP-89-80, & F-89-117

DEPARTMENT OF PUBLIC WORKS
HOWARD COUNTY, MARYLAND

DIRECTOR OF PUBLIC WORKS - DATE
[Signature] 3-21-89

CHIEF - BUREAU OF ENGINEERING - DATE
[Signature]

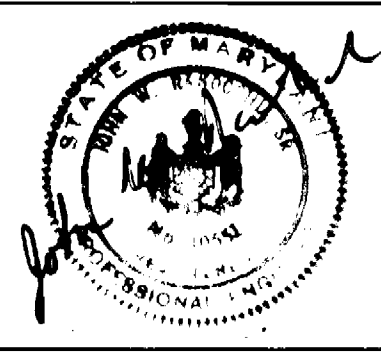
CHIEF - BUREAU OF UTILITIES - DATE
[Signature]

CHIEF - LAND DEVELOPMENT DIVISION - DATE

DAFT - McCUNE - WALKER, INC.

LAND PLANNING CONSULTANTS
LANDSCAPE ARCHITECTS
ENGINEERS

530 E. JOPPA ROAD
TOWSON, MARYLAND 21284



DESIGN BY:	JDC
DRAWN BY:	MSS-WALL
CHECKED BY:	JWR
DATE:	2/27/89
BY NO.	
REVISION	
DATE	

PLAN AND PROFILE
WATER MAINS

600 SCALE MAP NO. 43 BLOCK NO. 1

COLUMBIA GATEWAY
PARCELS D-1 AND D-2, PHASE ONE

6TH ELECTION DISTRICT HOWARD COUNTY, MARYLAND

CONTRACT NO. 44-1915-D

SCALE AS SHOWN

SHEET 1 OF 1