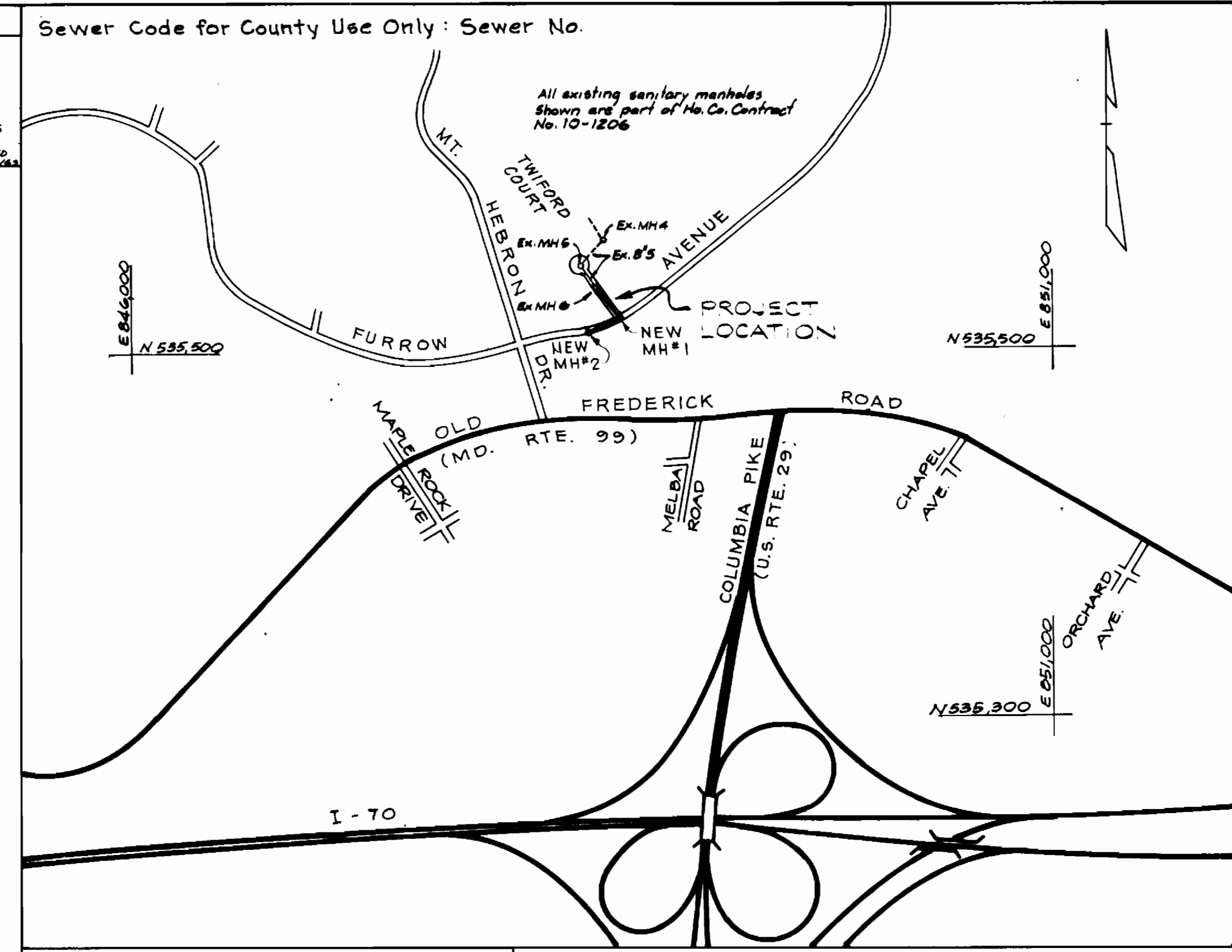


QUANTITIES				
ITEM	UNIT	ESTIMATE	AS BUILT	SUPPLIER
8" SEWER	L.F.	360	361 L.F.	CERTAINTEC - ACP SUPPLIES
MANHOLE	V.F.	19	21 L.F.	ATLANTIC CONCRETE
4" SEWER H.C.	L.F.	46'	67 L.F.	CHARLOTTE ACP SUPPLIES
DROP CONN.'S	EACH	2	2 EA	ATLANTIC CONCRETE



BENCH MARKS

B.M.#1 Elev. 456.36
X-Cut, Southeast corner of storm drain inlet of Twiford Court, Cul-de-sac.

B.M.#2 Elev. 474.13
X-Cut, Northwest corner pillow at Twiford Court, 125' North of Furrow Ave.

B.M.#3 Elev. 477.60
PK. set & beginning s/w top of macadam berm at Furrow Ave. 50' South of Twiford Ct.

TRAVERSE INFO

Ho. Co. #3442005 = N 535,105.610
E 847,927.008

H.E.C. TRAV. P.I. #994 = N 535,678.438
E 848,709.256
N 28°36'21" W, 481.49'

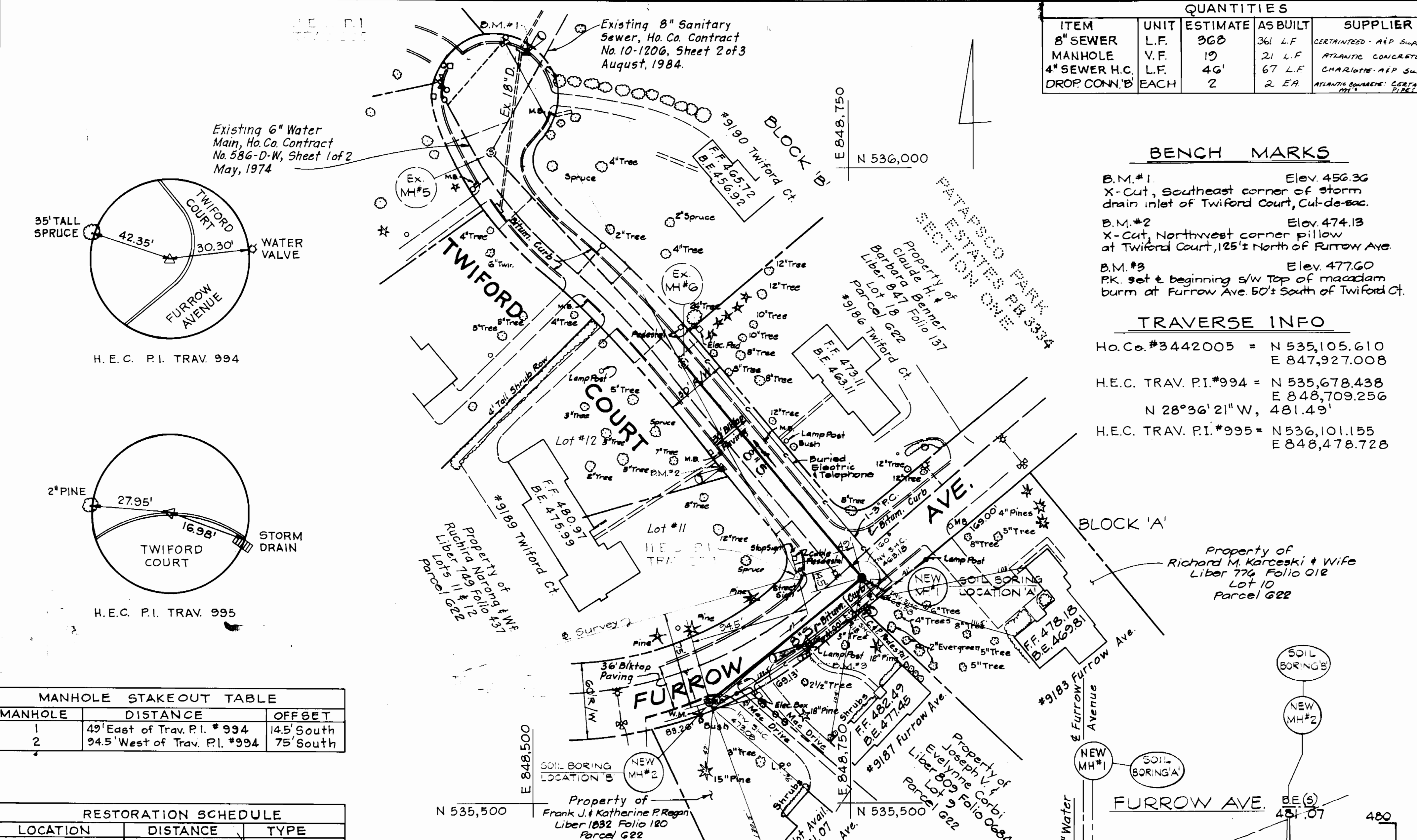
H.E.C. TRAV. P.I. #995 = N 536,101.155
E 848,478.728

DRAINAGE AREA: PATAPSCO
TYPE OF BUILDING: RESIDENTIAL
NUMBER OF LOTS: 3
NO. OF HOUSE CONNECTIONS: 3

VICINITY MAP
SCALE: 1"=600'

GENERAL NOTES

- Approximate Location of existing Mains are shown. The Contractor shall take all necessary precautions to protect existing mains and services and maintain uninterrupted supply. Any damage incurred shall be repaired immediately to the satisfaction of the Engineer at the Contractor's expense.
- All Horizontal Controls are based on Maryland State Coordinates
- All Vertical Controls are based on U.S.G.S Datum.
- All pipe Elevations shown are invert Elevations.
- Clear all utilities by a minimum of 6" Clear all poles by 2'-0" minimum or tunnel as required.
- For Details Not Shown On The Drawings, And For Materials And Construction Methods, Use Howard County Design Manual, Volume III, Standard Specifications And Details For Construction. The Contractor Shall Have A Copy Of Volume III On The Job.
- Where Test Pits Have Been Made On Existing Utilities, They Are Noted By The Symbol [Symbol] At The Location Of The Test PIT. A Note Or Notes Containing The Results Of The Test Pit Or Pits Is Included On The Drawings. Existing Utilities In The Vicinity Of The Proposed Work For Which Tests Have Not Been Dug Shall Be Located By The Contractor Two Weeks In Advance Of Construction Operations At The Owners Expense.
- Contractor shall notify the following Utilities Companies or Agencies at least five working days before starting work shown on these plans.
C&P Telephone Company 1-800-257-7777
State Highway Administration 531-5533
Baltimore Gas & Electric Co Contractor Services 850-4820
Baltimore Gas & Electric Co Underground Damage Control 850-9004
Baltimore Gas & Electric Co Trouble Shooting 295-3001
Miss Utility 1-800-257-7777
Colonial Pipeline Co 795-1300
Bureau of Utilities, Howard County Dept of Public Works 992-2366
- Trees and shrubs are to be protected from damage to maximum extent. Trees and shrubs located within the construction strip are not to be removed or damaged by the contractor.
- Contractor shall remove trees, stumps and roots along line of excavation. Payment for such removal shall be included in the unit price for construction of the main.
- All sewer mains shall be CSPX, R.C.S.P., V.G.P.X., ACP class 2400 or PVC unless otherwise noted.
- The contractor shall provide a joint in all sewer mains within 2'-0" of exterior manhole wall.
- All manholes shall be 4'-0" inside diameter unless otherwise noted.



MANHOLE STAKEOUT TABLE

MANHOLE	DISTANCE	OFFSET
1	49' East of Trav. P.I. #994	14.5' South
2	94.5' West of Trav. P.I. #994	75' South

RESTORATION SCHEDULE

LOCATION	DISTANCE	TYPE
Ex. MH 6 TO MH 1	219'	BLACKTOP
MH 1 TO STA. 1+45	145'	BLACKTOP
STA. 1+45 TO MH 2	10'	SEED
S.H.C.'s	23'	BLACKTOP
S.H.C.'s	25'	SEED

DAILY BACKFILL
SEDIMENT CONTROL MEASURES FOR THIS CONTRACT WILL BE IMPLEMENTED IN ACCORDANCE WITH SECTION 219 OF THE STANDARD SPECIFICATION.

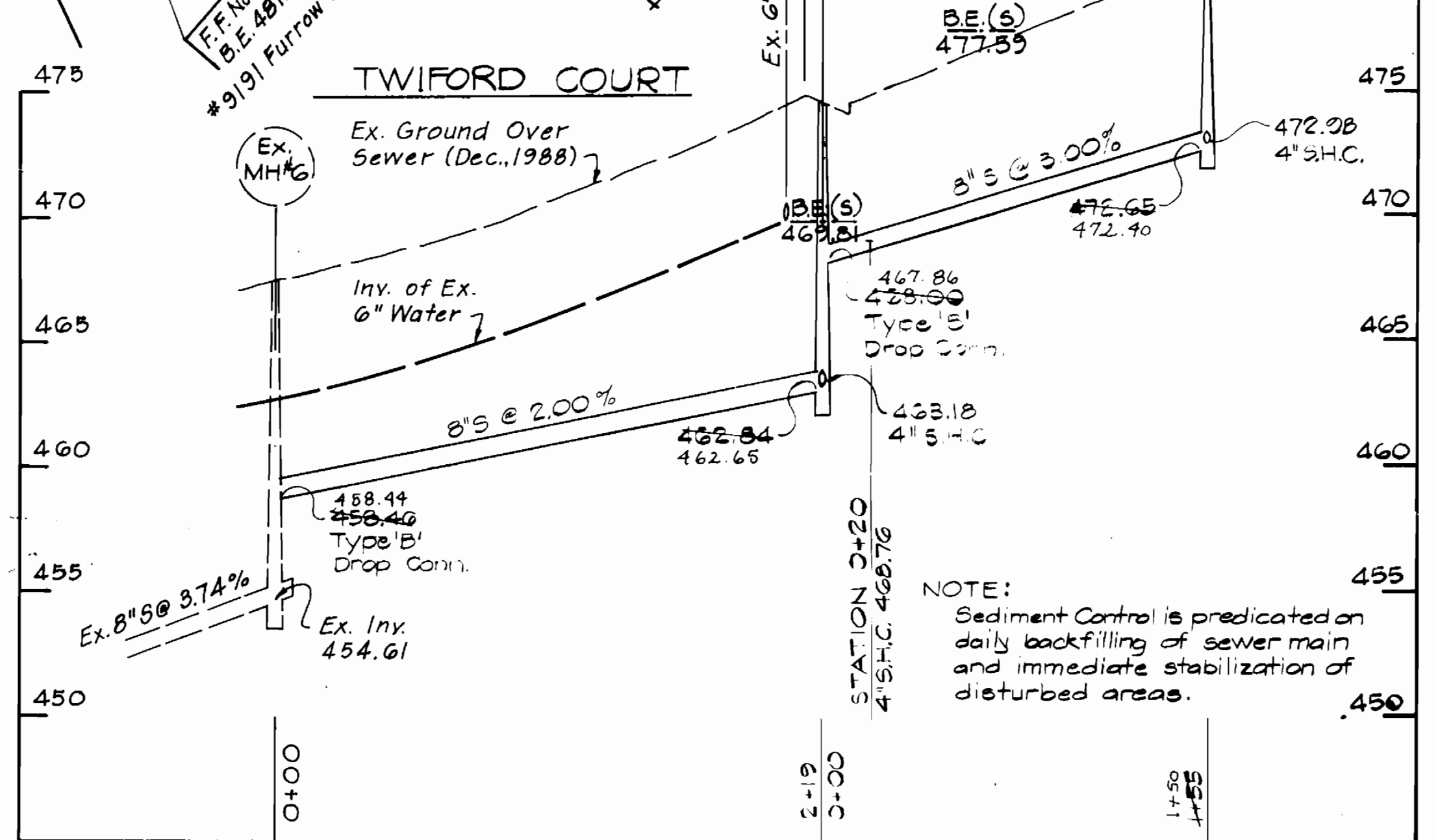
REVIEWED FOR HOWARD SOIL CONSERVATION DISTRICT AND MEETS TECHNICAL REQUIREMENT.

U.S. SOIL CONSERVATION SERVICE

This Construction Plan is approved for Soil Erosion and Sediment Control by the Howard Soil Conservation District.

APPROVED: _____ DATE: 11-18-89

HOWARD S.C.D.



DEPARTMENT OF PUBLIC WORKS
HOWARD COUNTY, MARYLAND

DIRECTOR OF PUBLIC WORKS DATE: 4-21-89

CHIEF, BUREAU OF ENGINEERING DATE: 4-5-89

CHIEF, BUREAU OF UTILITIES DATE: _____

CHIEF, UTILITY DESIGN DIVISION DATE: _____

HICKS ENGINEERING CO., INC.
ENGINEERS - SURVEYORS - PLANNERS
200 E. JOPPA ROAD - SUITE 402
TOWSON MARYLAND 21204

STATE OF MARYLAND
DONALD E. HICKS, P.E. REG. NO. 8676

DES: T.A.W.	
DRN: L.A.W.	
CHK: D.E.H.	
DATE:	
BY NO	
REVISION	

8" SANITARY SEWER
CONTRACT NO. 10-1908

TWIFORD COURT SEWER EXTENSION
SIXTH ELECTION DISTRICT
HOWARD COUNTY, MARYLAND
CAPITAL PROJECT S-6689

SCALE AS SHOWN
SHEET 1 OF 1