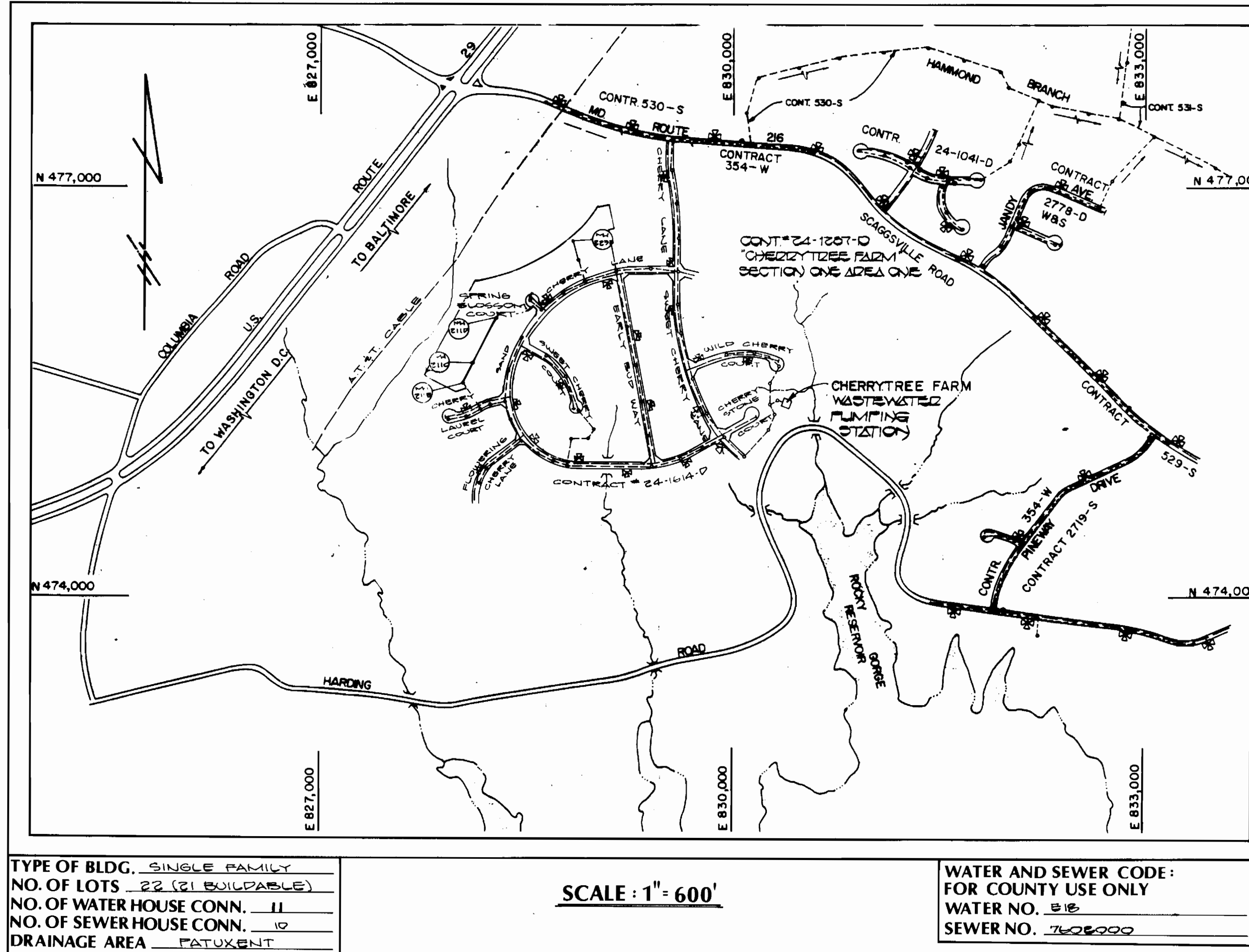


QUANTITIES			
ITEM	ESTIMATED	AS-BUILT	SUPPLIER
8" SEWER	642 LF	652 LF	CERTANTEO / ASP WATER CORP.
6" SEWER	164 LF	21 LF	"
MANHOLES	4 EA.	4 EA.	ATLANTIC CONCRETE PRODUCTS, INC.
1" WHC	69 LF	69 LF	HAIRSTEAD CO. & SEWER MOD.
3/4" WHC	262 LF	262 LF	HAIRSTEAD CO. " "
4" SEWER		198 LF	CERTANTEO / ASP WATER CORP. / 9 SEWER MOD.

* INSPECTION WAS ONLY DONE ON WHC'S FOR LOTS 205, 219 & 220. THE REMAINDER WERE INSTALLED PRIOR TO 12/4/89 WITH NO INSPECTION.

SEWER HOUSE CONNECT INVERT @ RL		
STATION	LOT	INVERT @ RL
MH 211/0+10	204	385.20
MH 210/0+75	205	382.56
MH 210/1+75	206	380.34
MH 214/0+20	207	397.27
MH 210/0+70	208	391.71
MH 210/1+90	209	392.51
MH 214/1+74	210	401.90
MH 214/1+74	211	401.90
MH 210/2+75	212	393.75
MH 210	213	394.42
MH 215	214	404.56
MH 225/0+57	215	400.12
MH 225/1+55	216	401.64
MH 226	217	401.90
MH 226	218	401.78
MH 223A/0+47	219	380.84
MH 223A	220	386.70
MH 221/1+61	221	379.23
MH 221/0+55	222	378.86
MH 221	223	378.58
MH 221	224	378.58



TYPE OF BLDG. SINGLE FAMILY
 NO. OF LOTS 22 (21 BUILDABLE)
 NO. OF WATER HOUSE CONN. 11
 NO. OF SEWER HOUSE CONN. 10
 DRAINAGE AREA PATUXENT

SCALE: 1" = 600'

WATER AND SEWER CODE:
 FOR COUNTY USE ONLY
 WATER NO. 215
 SEWER NO. 762800

- GENERAL NOTES
- Approximate location of existing mains are shown. The contractor shall take all necessary precautions to protect existing mains and services and maintain uninterrupted supply. Any damage incurred shall be repaired immediately to the satisfaction of the Engineer at the Contractor's expense.
 - All horizontal controls are based on Maryland State Coordinates.
 - All vertical controls are based on U.S.G.S. data.
 - All pipe elevations shown are invert elevations.
 - Clear all utilities by a minimum of 6". Clear all poles by 2'-0" minimum or tunnel as required. The owner has contacted the utility companies and has made arrangements for bracing of poles as shown on the drawings. In the event the contractor's work requires the bracing of additional poles, any cost incurred by the owner for the bracing of additional poles or damages shall be deducted from money owed the contractor. The contractor shall coordinate with the utility companies to schedule the bracing of the poles.
 - For details not shown on the drawings, and for materials and construction methods, use Howard County Design Manual, Volume IV, Standard Specifications and Details for Construction. The contractor shall have a copy of Volume IV on the job.
 - Where test pits have been made on existing utilities, they are shown by the symbol (C) at the location of the test pits. A note or notes containing the results of the test pit or pits is included on the drawings. Existing utilities in the vicinity of the proposed construction for which test pits have not been dug shall be located by the contractor two weeks in advance of construction operations at his own expense.
 - Contractor shall notify the following utilities or agencies at least five working days before starting work shown on those plans:
 State Highway Administration - 531-5533
 Baltimore Gas & Electric Co. - Contractor Services - 561-2585
 Baltimore Gas & Electric Co. - Underground Damage Control - 234-5621
 Miss Utility - 1-800-257-7777
 Colonial Pipeline Co. - 795-1390
 Bureau of Utilities, Howard County Department of Public Works - 992-2366
 - Trees are to be protected from damages to maximum extent. Trees located within the construction strip are not to be removed or damaged by the contractor.
 - Contractor shall remove trees, stumps, and roots along line of excavation as directed by the Engineer. Payment for such removal shall be included in the unit price bid for excavation and backfill.
 - Place regulation "Men Working" and warning signs as required to comply with Maryland State Highway Administration Manual of Traffic Control for Highway Construction and Maintenance Operations.
 - Provide outside metering for the water house connections to Lots 208, 209, 212, 213, 219 and 220. All other water house connections shall be for inside meter setting.
 - Top of all water mains to have minimum of 3 1/2' cover unless otherwise noted.
 - Valves adjacent to tees shall be strapped to tees.
 - Block all fittings with concrete.
 - Bury line elevation on fire hydrants shall be set to the elevations shown on the drawings. All fire hydrants shall be strapped and buttressed with concrete on accordance with standard details. Soil around the fire hydrant to be compacted in accordance with Section 1003 & 1008 of the General Requirements for Water & Sewer.
 - All water house connections shall be for an inside metersetting.
 - The contractor shall not operate any water main valves on the existing system.
 - All sewer mains shall be C.S.P.X., V.C.P.X., P.V.C. or A.C.P. Class 2400 unless otherwise noted.
 - The contractor shall provide a joint in all sewer mains with 2'-0" of exterior manhole wall.
 - All manholes shall be 4'-0" inside diameter, unless otherwise noted.
 - Manholes shown with 12" and 16" walls are brick manholes only.
 - Manholes designated W.T. in plan and profile shall have water tight frame and covers, Standard Detail G5 52 volume IV. Where watertight manhole frame and cover is used, set top of frame 1'-6" above finished grade.
 - House (s) with the symbol "CMB" indicates cellar can not be served.
 - All sewer house connections to be 4", single house connections.

CONTRACT NO. 24-1906-D
 CHERRYTREE FARM
 SECTION 1, AREA 3
 WATER AND SEWER MAIN EXTENSIONS
HOWARD COUNTY, MARYLAND
 DEPARTMENT OF PUBLIC WORKS

SEDIMENT CONTROL MEASURES FOR THIS CONTRACT WILL BE IMPLEMENTED IN ACCORDANCE WITH SECTION 219 OF THE HOWARD COUNTY DESIGN MANUAL AND STANDARDS AND SPECIFICATIONS FOR SOIL EROSIONS AND SEDIMENT CONTROL IN DEVELOPING AREAS AND ALSO AS SHOWN ON THE GRADING AND SEDIMENT CONTROL PLAN F80-55

REVIEW FOR HOWARD COUNTY SOIL CONSERVATION DISTRICT AND MEETS TECHNICAL REQUIREMENTS.

US SOIL CONSERVATION SERVICE DATE

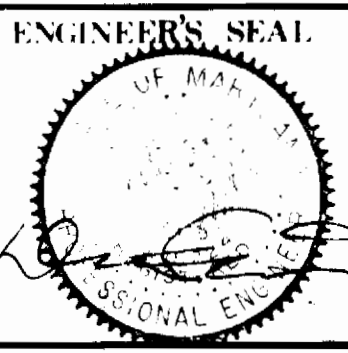
THIS DEVELOPMENT PLAN IS APPROVED FOR EROSION AND SEDIMENT CONTROL BY HOWARD SOIL CONSERVATION DISTRICT.

APPROVED:

HOWARD SOIL CONSERVATION DISTRICT DATE

DEPARTMENT OF PUBLIC WORKS
 HOWARD COUNTY, MARYLAND
 DIRECTOR OF PUBLIC WORKS DATE: 2-27-89
 CHIEF, BUREAU OF UTILITIES DATE: 2-27-89
 CHIEF, LAND DEVELOPMENT DIV. DATE: 2-27-89

DEVELOPMENT CONSULTANTS
 GROUP, INC.
 17904 GEORGIA AVE.
 OLNEY, MD. 20832
 301-924-4570



DES: D.B.E.
 DRN: M.A.M.
 CHK: M.L.S.
 DATE: 2-27-89
 REVISION: NO. BY NO. DATE

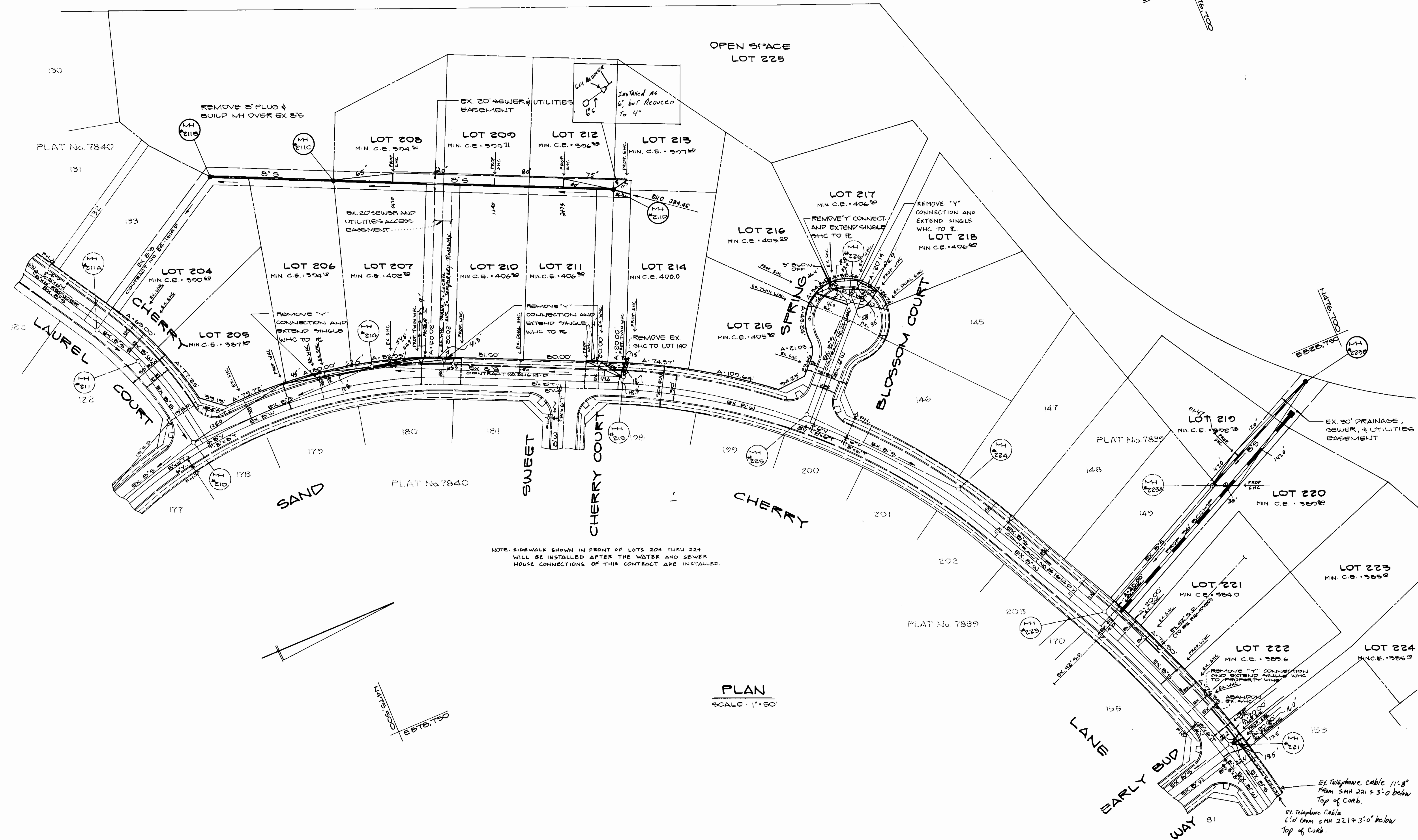
TITLE SHEET
 600 SCALE MAP NO. 46 BLOCK NO.

CHERRYTREE FARM
 SECTION ONE, AREA THREE
 CONTRACT No. 24-1906-D
 SIXTH ELECTION DISTRICT
 HOWARD COUNTY, MARYLAND
 SCALE AS SHOWN
 SHEET 1 of 3

AS-BUILT 3/2/90

D.C.G. #205-05

E828,300
N476,100



NOTE: SIDEWALK SHOWN IN FRONT OF LOTS 204 THRU 224 WILL BE INSTALLED AFTER THE WATER AND SEWER HOUSE CONNECTIONS OF THIS CONTRACT ARE INSTALLED.

PLAN
SCALE: 1"=50'

DEPARTMENT OF PUBLIC WORKS
HOWARD COUNTY, MARYLAND

DEVELOPMENT CONSULTANTS
GROUP, INC.

ENGINEER'S SEAL

DES:	D.B.E.				
DRN:	M.A.M.				
CHK:	M.L.S.				
DATE:	1	Rev. location SHC to lot 214 from Ex MH 215 to MH 2110	12/19/89		
BY:					
NO.					
REVISION					

PLAN

SEWER EXTENSION

CHERRYTREE FARM
SECTION ONE AREA THREE
CONTRACT No. 84-1906-D
SIXTH ELECTION DISTRICT
HOWARD COUNTY, MARYLAND

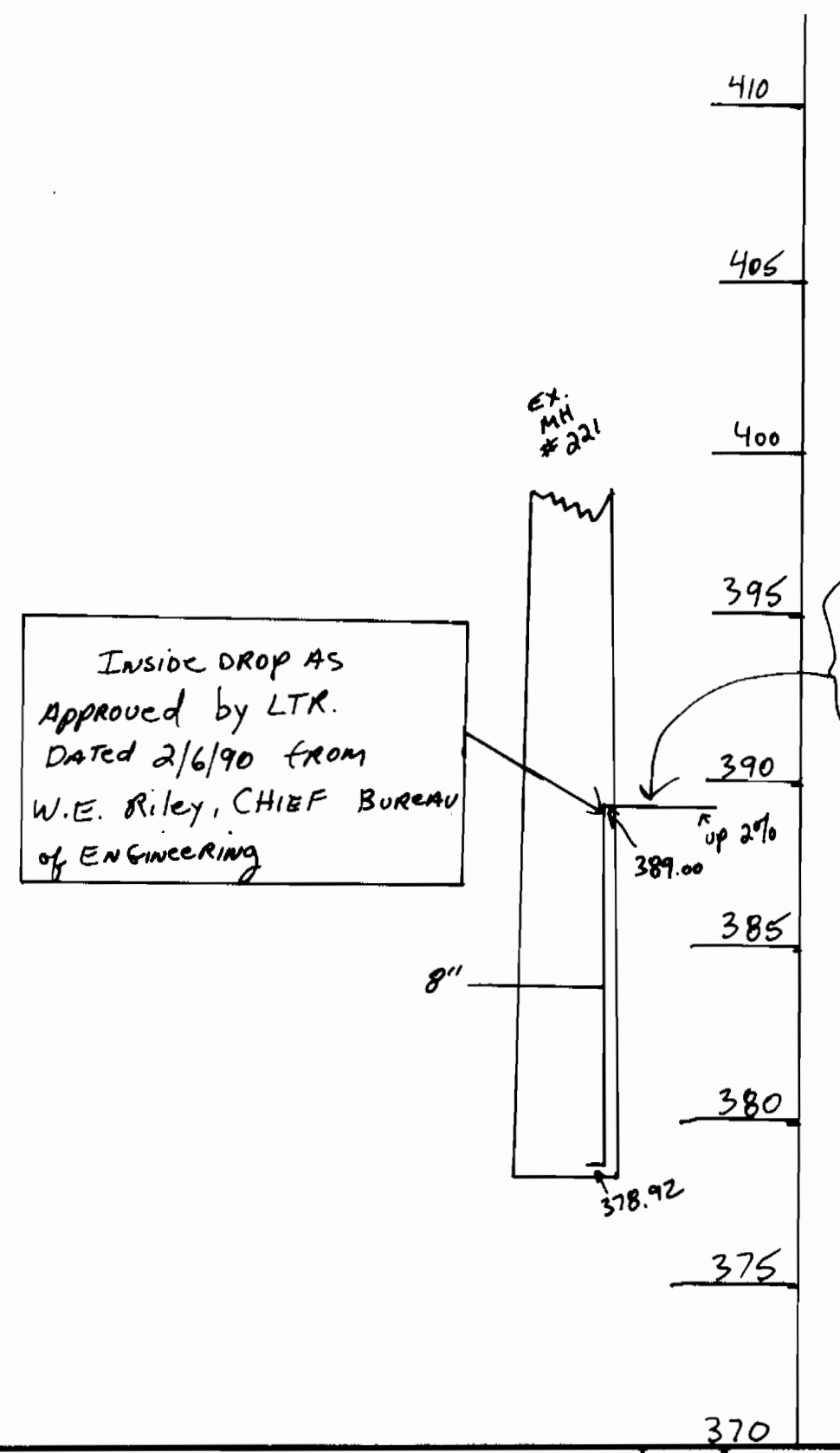
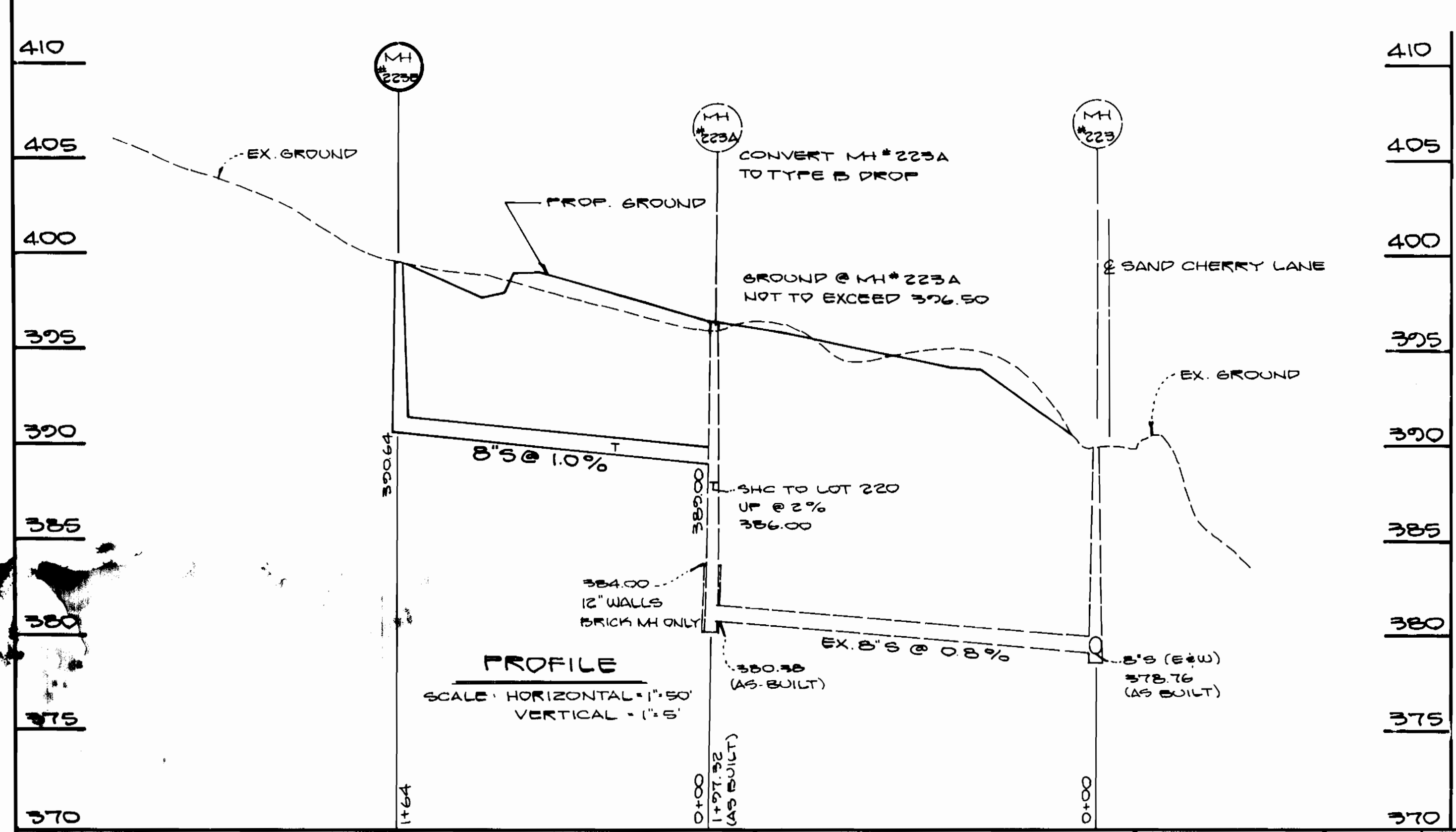
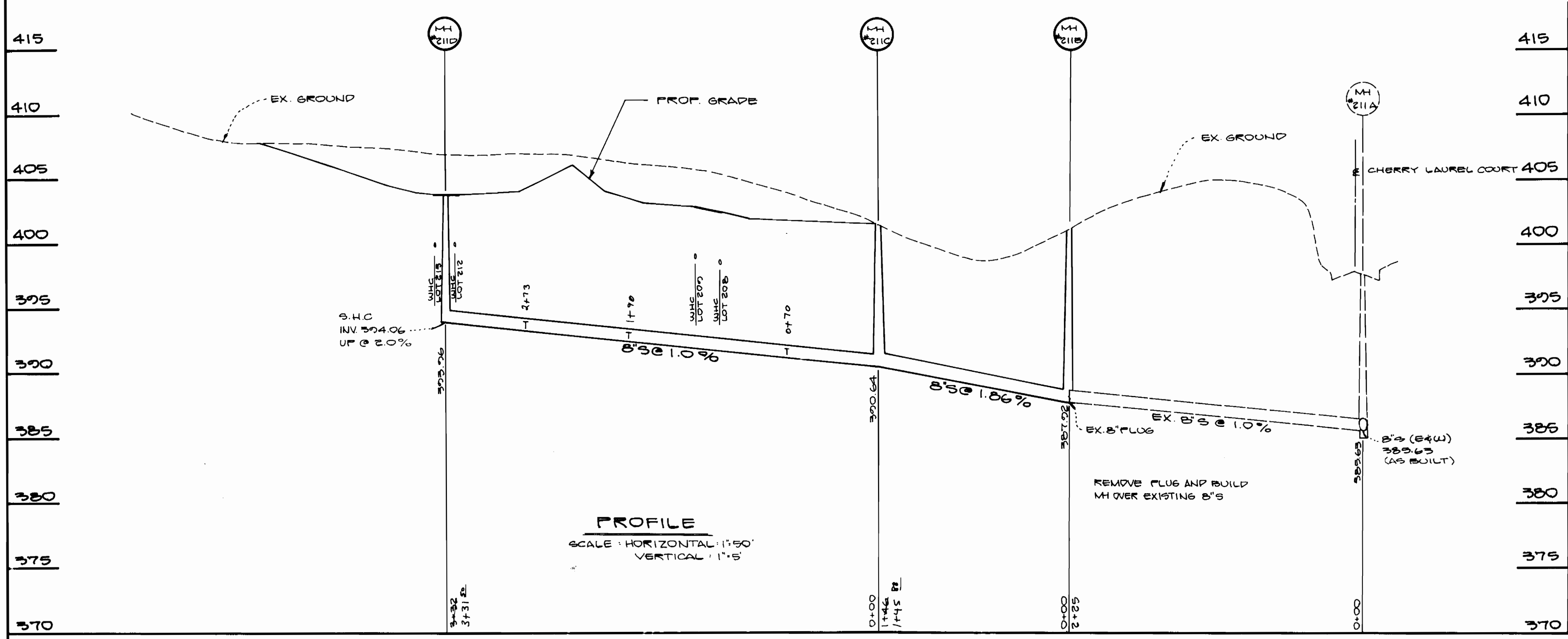
SCALE
1"=50'
SHEET
2
of 3

DIRECTOR OF PUBLIC WORKS DATE: 3-1-89
CHIEF, BUREAU OF ENGINEERING DATE
CHIEF, BUREAU OF UTILITIES DATE

17904 GEORGIA AVE.
OLNEY, MD. 20832
301-924-4570

AS-BUILT 3/2/90

PC 6 #205-05



DEPARTMENT OF PUBLIC WORKS
HOWARD COUNTY, MARYLAND

DIRECTOR OF PUBLIC WORKS DATE
Richard B. ... 2-27-97

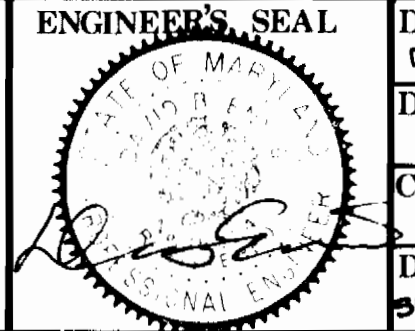
CHIEF, BUREAU OF UTILITIES DATE

CHIEF, BUREAU OF ENGINEERING DATE
W.E. Riley 3-1-89

CHIEF, LAND DEVELOPMENT DIV. DATE

DEVELOPMENT CONSULTANTS GROUP, INC.

17904 GEORGIA AVE.
OLNEY, MD. 20832
301-924-4570



DES: P.B.E.					
DRN: M.A.M.					
CHK: M.L.S.					
DATE: SEPT. 1, 1988	BY	NO.	REVISION	DATE	600 SCALE MAP NO. 46 BLOCK NO.

PROFILES

SEWER EXTENSION

CHERRYTREE FARM
SECTION ONE, AREA THREE
CONTRACT No 24-1906-D
SIXTH ELECTION DISTRICT
HOWARD COUNTY, MARYLAND

SCALE AS SHOWN

SHEET 5 of 3

AS-BUILT 3/2/90

P.C.G #205-03