

- GENERAL NOTES
- APPROXIMATE LOCATION OF EXISTING MAINS ARE SHOWN. THE CONTRACTOR SHALL TAKE ALL NECESSARY PRECAUTIONS TO PROTECT EXISTING MAINS AND SERVICES AND MAINTAIN UNINTERRUPTED SUPPLY. ANY DAMAGE INCURRED SHALL BE REPAIRED IMMEDIATELY TO THE SATISFACTION OF THE ENGINEER, AT THE CONTRACTOR'S EXPENSE.
 - ALL HORIZONTAL CONTROLS ARE BASED ON MARYLAND STATE COORDINATES.
 - ALL VERTICAL CONTROLS ARE BASED ON U.S.G.S. DATUM.
 - ALL PIPE ELEVATIONS SHOWN ARE INVERT ELEVATIONS.
 - CLEAR ALL UTILITIES BY A MINIMUM OF 6". CLEAR ALL POLES BY 2'-0" MINIMUM OR TUNNEL AS REQUIRED.
 - FOR DETAILS NOT SHOWN ON THE DRAWINGS, AND FOR MATERIALS AND CONSTRUCTION METHODS, USE HOWARD COUNTY DESIGN MANUAL, VOLUME IV, STANDARD SPECIFICATIONS AND DETAILS FOR CONSTRUCTION. THE CONTRACTOR SHALL HAVE A COPY OF VOLUME IV ON THE JOB.
 - WHERE TEST PITS HAVE BEEN MADE ON EXISTING UTILITIES, THEY ARE NOTED BY THE SYMBOL AT THE LOCATION OF THE TEST PIT. A NOTE OR NOTES CONTAINING THE RESULTS OF THE TEST PIT OR PITS IS INCLUDED ON THE DRAWINGS. EXISTING UTILITIES IN THE VICINITY OF THE PROPOSED WORK FOR WHICH TEST PITS HAVE NOT BEEN DUG SHALL BE LOCATED BY THE CONTRACTOR TWO WEEKS IN ADVANCE OF CONSTRUCTION OPERATIONS AT HIS OWN EXPENSE.
 - CONTRACTOR SHALL NOTIFY THE FOLLOWING UTILITIES OR AGENCIES AT LEAST FIVE WORKING DAYS BEFORE STARTING WORK SHOWN ON THESE PLANS.

STATE HIGHWAY ADMINISTRATION	531-8333
BALTIMORE GAS & ELECTRIC CO.	CONTRACTOR SERVICE 561-2585
BALTIMORE GAS & ELECTRIC CO.	UNDERGROUND DAMAGE CONTROL 234-5621
BALTIMORE GAS & ELECTRIC CO.	TROUBLE SHOOTING 298-9013
MISS UTILITY	1-559-0100
COLONIAL PIPELINE CO.	795-1390
BUREAU OF UTILITIES, HOWARD CO.	992-2366
DEPARTMENT OF PUBLIC WORKS	992-2366
 - TREES AND SHRUBS ARE TO BE PROTECTED FROM DAMAGE TO MAXIMUM EXTENT. TREES AND SHRUBS LOCATED WITHIN THE CONSTRUCTION STRIP ARE NOT TO BE REMOVED OR DAMAGED BY THE CONTRACTOR.
 - CONTRACTOR SHALL REMOVE TREES, STUMPS AND ROOTS ALONG LINE OF EXCAVATION.
 - ALL WATER MAINS TO BE D.I.P., UNLESS OTHERWISE NOTED.
 - TOPS OF ALL WATER MAINS TO HAVE A MINIMUM OF 42" COVER UNLESS OTHERWISE NOTED.
 - VALVES ADJACENT TO TEES SHALL BE STRAPPED TO TEES.
 - ALL FITTINGS SHALL BE BUTTRESSED OR ANCHORED WITH CONCRETE IN ACCORDANCE WITH THE STANDARD DETAILS UNLESS OTHERWISE PROVIDED FOR ON THE DRAWINGS.
 - FIRE HYDRANTS SHALL BE SET TO THE BURY LINE ELEVATIONS SHOWN ON THE DRAWINGS. ALL FIRE HYDRANTS SHALL BE STRAPPED AND BUTTRESSED WITH CONCRETE IN ACCORDANCE WITH STANDARD DETAILS. SOILS AROUND THE FIRE HYDRANT SHALL BE COMPACTED IN ACCORDANCE WITH SECTION 1003 OF THE STANDARD SPECIFICATIONS.
 - THE CONTRACTOR SHALL NOT OPERATE ANY WATER MAIN VALVES ON THE EXISTING WATER SYSTEM.
 - ALL WATER HOUSE CONNECTIONS SHALL BE FOR AN INSIDE METER SETTING, UNLESS OTHERWISE NOTED.
 - EXTEND PIPE AS NECESSARY TO INSTALL PLUG FOR BLOCKING, WHERE WATER MAINS END WITH VALVES.
 - ALL SEWER MAINS SHALL BE C.S.P.X., D.I.P., V.C.P.X., A.C.P. CLASS 2400 OR P.V.C. UNLESS OTHERWISE NOTED.
 - THE CONTRACTOR SHALL PROVIDE A JOINT IN ALL SEWER MAINS WITHIN 2'-0" OF EXTERIOR MANHOLE WALLS.
 - ALL MANHOLES SHALL BE 4'-0" INSIDE DIAMETER UNLESS OTHERWISE NOTED.
 - ORIGINAL GROUND OVER SEWER WAS OBTAINED BY FIELD SURVEY IN SEPTEMBER, 1987.
 - STRAW BALE DICES AND SILT FENCES ARE INTERCHANGEABLE.
 - ALL D.I.P. FITTINGS SHALL BE IN ACCORDANCE WITH A.W.W.A. SPECIFICATION C-153 DUCTILE IRON COMPACT FITTINGS, 3 INCH THROUGH 12 INCH FOR WATER AND OTHER LIQUIDS.
 - ALL SERVICE CLAMPS ARE TO HAVE STAINLESS STEEL STRAPS.

BM#2 ELEV. 155.48
RIM OF EXIST. SANITARY SEWER MANHOLE

BM#1 ELEV. 164.37
10" CUT IN TOP OF CURB @ EXIST. FIRE HYDRANT

REMOVE EX. CAP & BUTTRESS AND CONNECT PROP. 8" W

REMOVE EX. 6" STUB & REPLACE WITH 6" S

MAIER ROAD
EX. 8" S (302-A.S.)
EX. 8" W (24-1536-D)

PARCEL E-1
MAIER INDUSTRIAL PARK

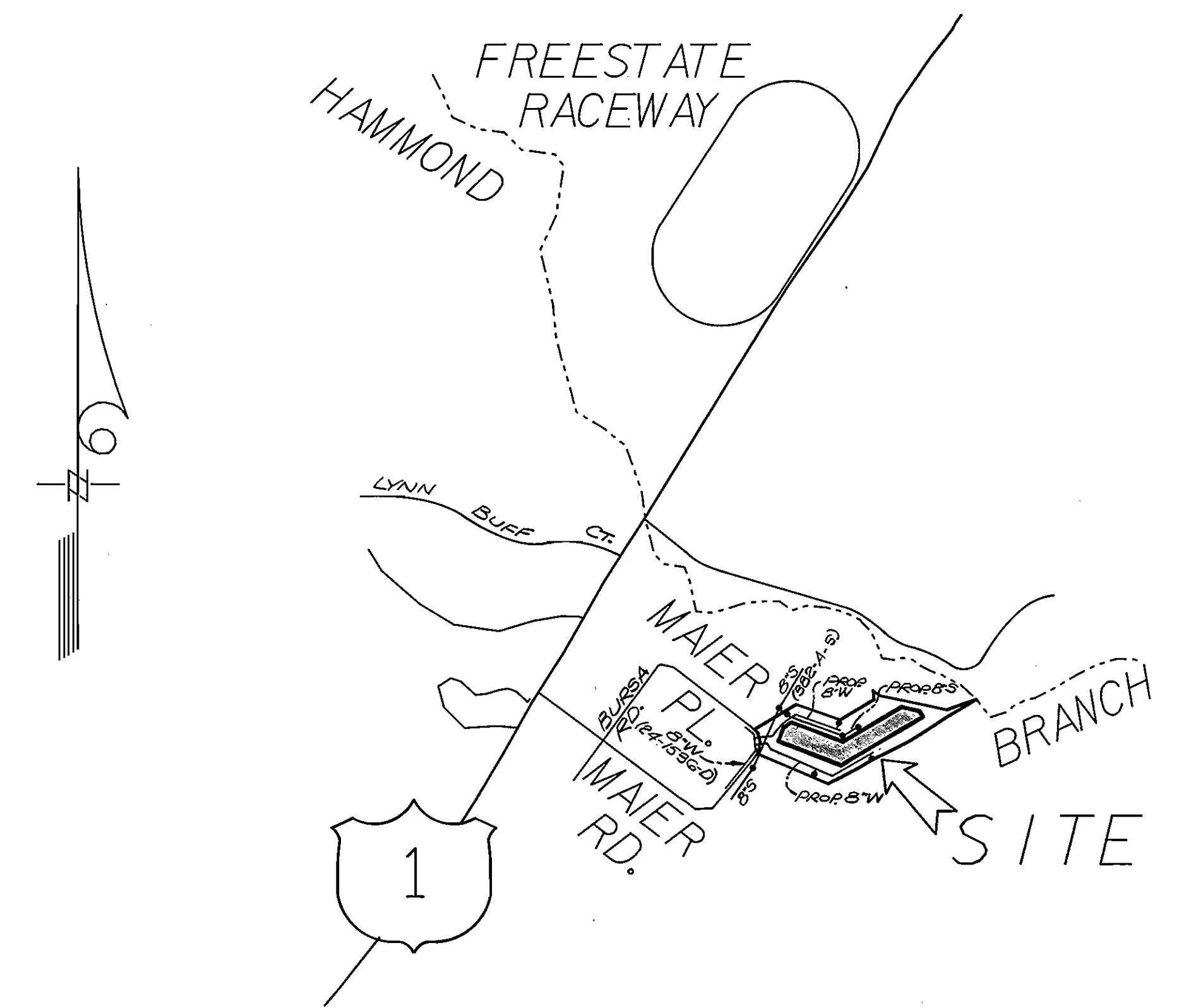
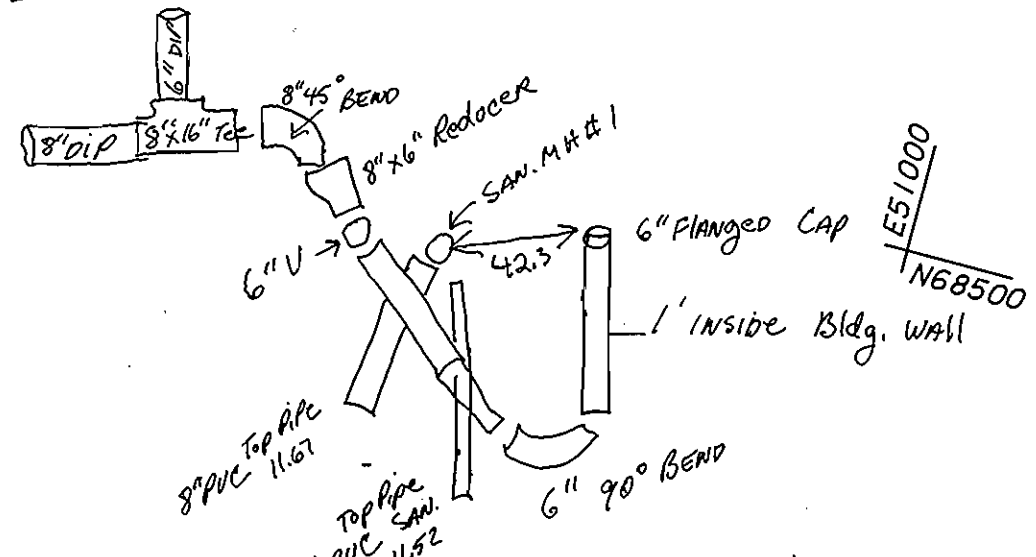
PARCEL E-4
MAIER INDUSTRIAL PARK

PARCEL E-5
MAIER INDUSTRIAL PARK

FF ELEV. = 153.0

FF ELEV. = 154.0

5.0' F.H. B.L. = 157.0



VICINITY MAP SCALE: 1" = 600'

WATER & SEWER CODES: (FOR COUNTY USE)	DRAINAGE AREA: LITTLE PATUXENT
WATER: C04	TYPE OF BLDG.: WAREHOUSE
SEWER: 709999	Nº OF WHC: 1
	Nº OF LOTS: 1
	Nº OF SUG: 1

ITEM	QUANTITIES		MATERIAL / SUPPLIER
	BID	AS-BUILT	
8" WATER LF	1105	1125 LF	Gal. Pipe, Pipe, JRP WATER
6" WATER LF	130	71.50 LF	" " " "
8" SEWER LF	22	N/A (PRIVATE)	Certain Tech / JRP WATER
48" MANHOLE EA.	1	N/A (PRIVATE)	Concrete Products of America
FIRE HYDRANT EA.	3	3	Gal. Pipe, Pipe, JRP WATER
8" X 6" T EA.	3	3	" " " "
8" PLUG EA.	1	1	" " " "
8" 1/2" B EA.	4	3	" " " "
8" 1/2" B EA.	1	3	" " " "
6" VALVE EA.	4	4	" " " "
8" X 6" REDUCER EA.	1	1	" " " "
6" CAP	1	1	" " " "
8" SLEEVE		4	" " " "

REVIEWED FOR HOWARD S.C.D. AND MEETS TECHNICAL REQUIREMENTS.
[Signature] 3/17/89
 S.C.D. SOIL CONSERVATION SERVICE DATE

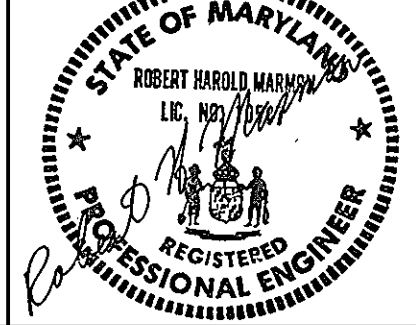
THIS DEVELOPMENT PLAN IS APPROVED FOR SOIL EROSION AND SEDIMENT CONTROL BY THE HOWARD SOIL CONSERVATION DISTRICT.
[Signature] 3/16/89
 HOWARD S.C.D. DATE

SEDIMENT CONTROL MEASURES FOR THIS CONTRACT WILL BE IMPLEMENTED IN ACCORDANCE WITH SECTION 219 OF THE STANDARD SPECIFICATION, AND SITE PLAN SDP-89-51.

BEFORE BEGINNING CONSTRUCTION, CONTACT "MISS UTILITY" AT 1-800-257-7777 AT LEAST 48 HOURS PRIOR TO CONSTRUCTION.

DEPARTMENT OF PUBLIC WORKS
 HOWARD COUNTY, MARYLAND
 Director of Public Works: *[Signature]* 3/20/89
 Chief, Bureau of Engineering: *[Signature]* 3/20/89
 Chief, Bureau of Utilities: *[Signature]* 3/14/89
 Chief, Land Development Division: *[Signature]* 3/20/89

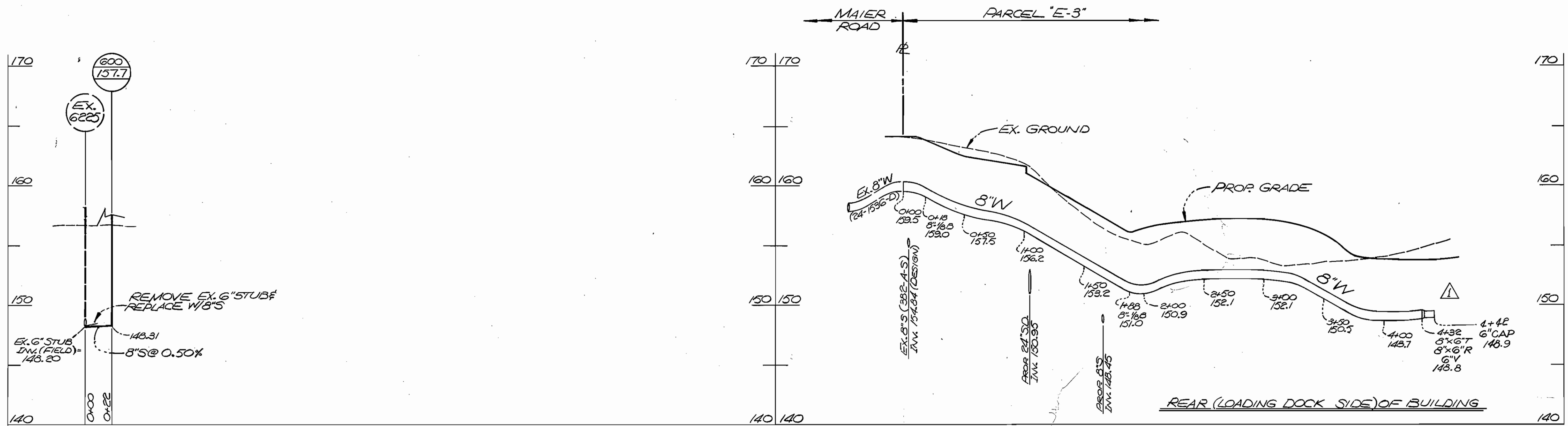
ENGINEERS-ARCHITECTS-PLANNERS-SCIENTISTS
 SURVEYORS-PHOTOGRAMMETRISTS
GREENHORNE & O'MARA, INC.
 113 WEST ROAD, SUITE 208
 BALTIMORE, MARYLAND 21204
 (301) 296-4100



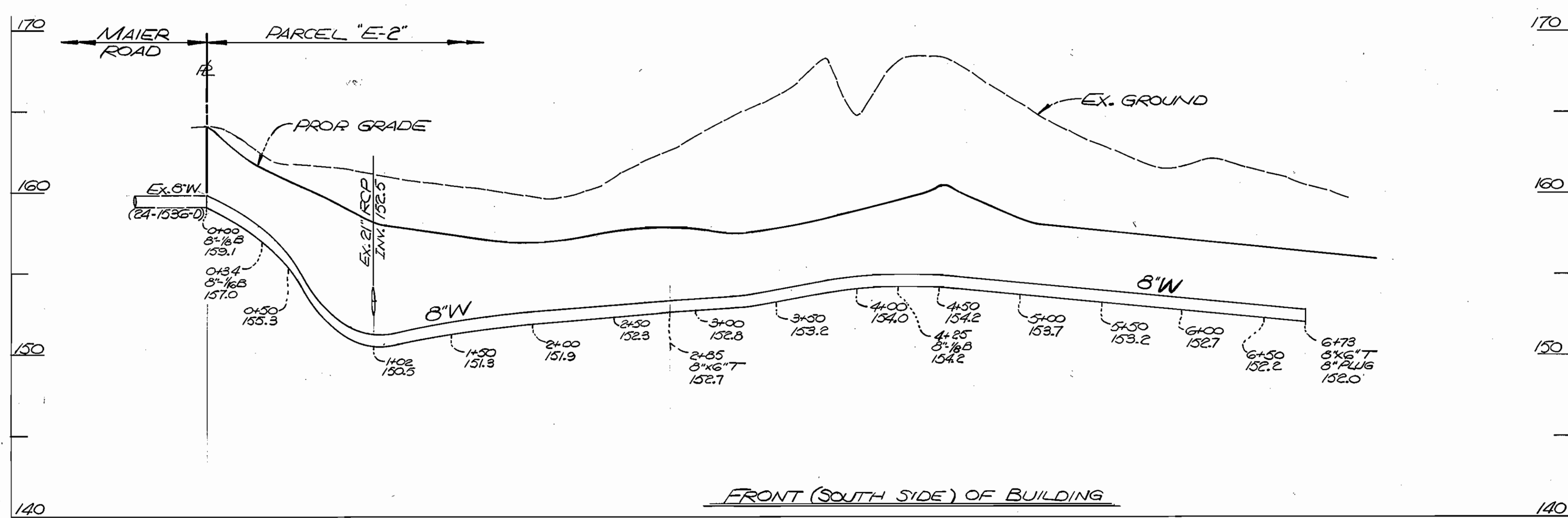
DES: JDP	
DRN: JDP/AM	
CHK: RHM	
DATE: Oct. 1988	
BY NO.	REVISIONS
DATE	

PLAN FOR WATER MAIN & SANITARY SEWER EXTENSION
 600' SCALE MAP NO. 47 BLOCK NO. 23

MAIER INDUSTRIAL PARK - PARCEL E-6
 TAX MAP 47 PARCEL 873
 CONTRACT # 24-1896-D
 6TH ELECTION DISTRICT
 HOWARD COUNTY, MARYLAND
 AS-BUILT 12/27/89
 SCALE: 1" = 50'
 SHEET 1 OF 2
 B-1105-X



PROFILE SCALE: HORIZ. 1"=50'
VERT. 1"=5'



REVIEWED FOR HOWARD S.C.D.
AND MEETS TECHNICAL REQUIREMENTS.

U.S. SOIL CONSERVATION SERVICE DATE

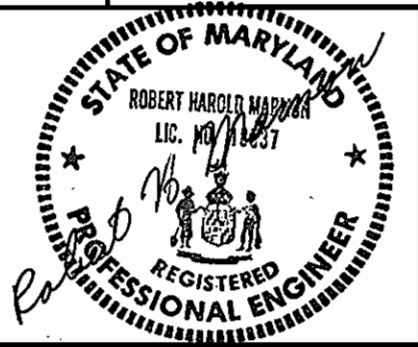
THIS DEVELOPMENT PLAN IS APPROVED FOR SOIL EROSION AND SEDIMENT CONTROL BY THE HOWARD SOIL CONSERVATION DISTRICT
Stephen F. Juhn 3/16/89
HOWARD S.C.D. DATE

SEDIMENT CONTROL MEASURES FOR THIS CONTRACT WILL BE IMPLEMENTED IN ACCORDANCE WITH SECTION 219 OF THE STANDARD SPECIFICATION, AND SITE PLAN SDP-89-84.

BEFORE BEGINNING CONSTRUCTION, CONTACT "MISS UTILITY" AT 1-800-257-7777 AT LEAST 48 HOURS PRIOR TO CONSTRUCTION.

DEPARTMENT OF PUBLIC WORKS
HOWARD COUNTY, MARYLAND
James J. Lewis 3/21/89
DIRECTOR OF PUBLIC WORKS DATE
William J. Kelly 3/20/89
CHIEF, BUREAU OF ENGINEERING DATE
Paul J. Szymanski 3/20/89
CHIEF, LAND DEVELOPMENT DIVISION DATE

ENGINEERS-ARCHITECTS-PLANNERS-SCIENTISTS
SURVEYORS-PHOTOGRAMMETRISTS
GREENHORNE & O'MARA, INC.
113 WEST ROAD, SUITE 208
BALTIMORE, MARYLAND 21204
(301) 296-4100



DES: JDP			
DRN: JDA/um			
CHK: R4M			
DATE: OCT. 1988	JCH	EXTENDED PROFILE TO END OF EASEMENT	8/4/89
BY NO.		REVISIONS	DATE

PLAN FOR WATER MAIN
&
SANITARY SEWER EXTENSION
600' SCALE MAP NO. 47 BLOCK NO. 23

MAIER INDUSTRIAL PARK - PARCEL E-6
TAX MAP 47 PARCEL 873
CONTRACT # 24-1896-D
6TH ELECTION DISTRICT
HOWARD COUNTY, MARYLAND

SCALE: AS SHOWN
SHEET 2 OF 2