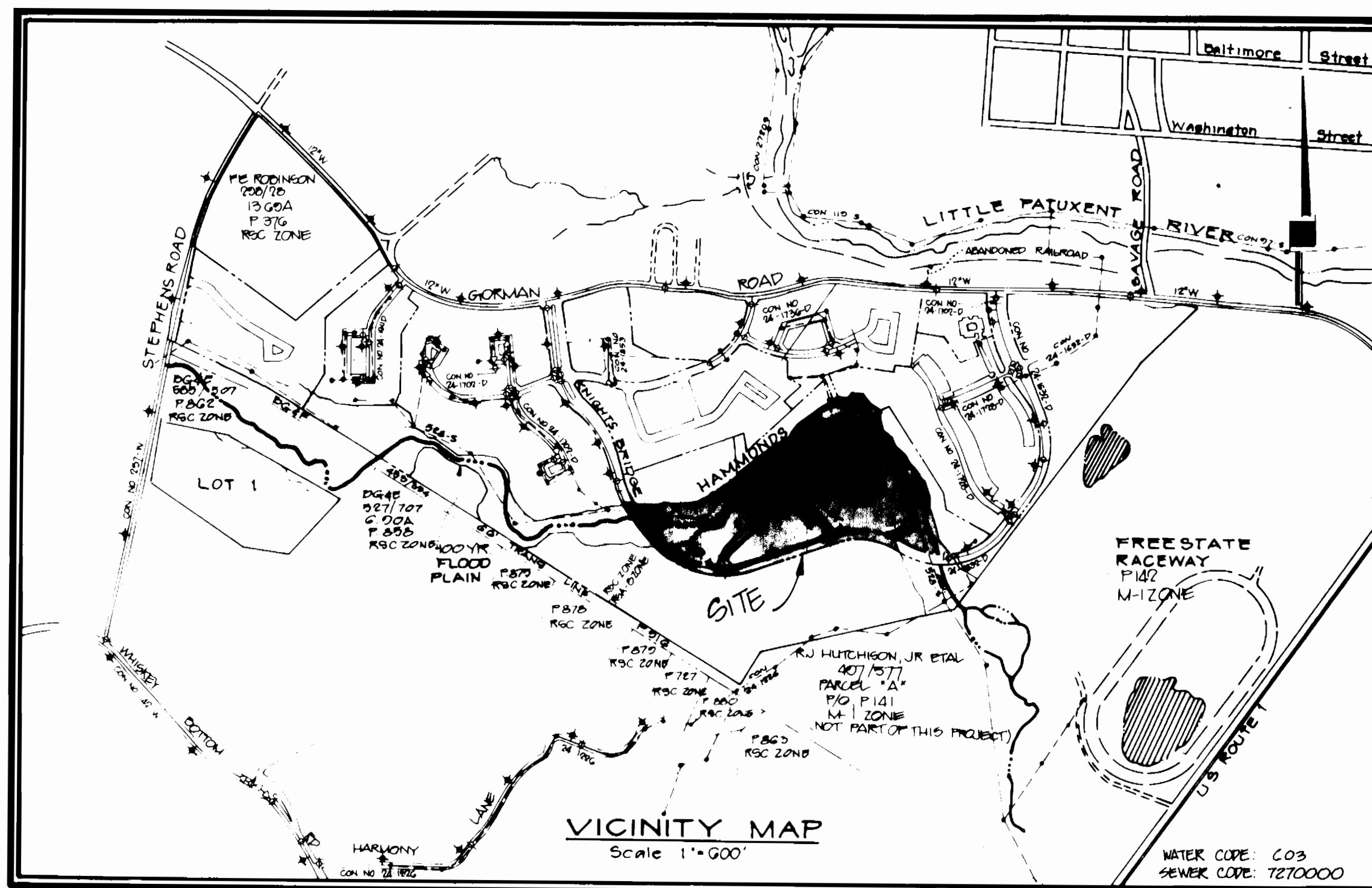


LOTS I-I THRU I-117 BOWLING BROOK FARMS HOWARD COUNTY, MARYLAND

GENERAL NOTES

1. THE APPROXIMATE LOCATION OF ALL UTILITIES IS SHOWN BASED ON INFORMATION OBTAINED FROM AVAILABLE RECORDS. THE CONTRACTOR SHALL LOCATE, PROTECT AND SUPPORT THE EXISTING UTILITIES AND MAINTAIN UNINTERRUPTED SERVICE. ANY DAMAGE INCURRED SHALL BE REPAIRED IMMEDIATELY TO THE SATISFACTION OF THE ENGINEER/INSPECTOR, AT THE CONTRACTOR'S EXPENSE.
2. CONTRACTOR SHALL LOCATE EXISTING UTILITIES A MINIMUM OF TWO (2) WEEKS IN ADVANCE OF CONSTRUCTION OPERATIONS IN THE VICINITY OF PROPOSED UTILITIES AT HIS OWN EXPENSE.
3. CONTRACTOR SHALL NOTIFY THE FOLLOWING UTILITIES OR AGENCIES AT LEAST FIVE (5) WORKING DAYS BEFORE STARTING WORK SHOWN ON THESE PLANS.
 - STATE HIGHWAY ADMINISTRATION - 531-5533
 - BALTIMORE GAS & ELECTRIC COMPANY - 561-2585 (CONTRACTOR SERVICES)
 - BALTIMORE GAS & ELECTRIC COMPANY - 234-6313 (UNDERGROUND DAMAGE CONTROL)
 - BALTIMORE GAS & ELECTRIC COMPANY - 298-9813 ("TROUBLE SHOOTING")
 - "MISS UTILITY" - 888-257-7777
 - CHESAPEAKE & POTOMAC (C&P) TELEPHONE COMPANY - 725-9976
 - BUREAU OF UTILITIES/HOWARD COUNTY - 992-2366
4. ALL DETAILS NOT SHOWN ON THE DRAWINGS SHALL BE CONSTRUCTED IN ACCORDANCE WITH HOWARD COUNTY STANDARD DETAILS.
5. ALL MATERIALS AND CONSTRUCTION METHODS SHALL BE IN ACCORDANCE WITH HOWARD COUNTY SPECIFICATIONS AND HOWARD COUNTY DESIGN MANUAL, VOLUME IV, 1987 AMENDMENTS.
6. ALL TRAFFIC CONTROL DEVICES SHALL BE IN ACCORDANCE WITH STANDARD SPECIFICATIONS FOR CONSTRUCTION AND MATERIALS, LATEST EDITION AND THE MANUAL ON UNIFORM TRAFFIC CONTROL DEVICES, LATEST EDITION.
7. TREES SHALL BE PROTECTED FROM DAMAGE TO THE MAXIMUM EXTENT POSSIBLE. TREES SIX INCH (6") DIAMETER OR GREATER (MEASURED FOUR FEET (4') ABOVE EXISTING GRADE) ADJACENT TO THE LIMITS OF CONSTRUCTION SHALL NOT BE REMOVED OR DAMAGED BY THE CONTRACTOR.
8. ALL HORIZONTAL AND VERTICAL CONTROLS ARE BASED ON MARYLAND STATE PLANE COORDINATES SYSTEM PROVIDED BY HOWARD COUNTY.
9. TOPOGRAPHY TAKEN FROM MAPS PREPARED BY PHOTOGRAMMETRY BY AERIAL SURVEY IN 1984. TOPOGRAPHY FIELD CHECKED 1986.
10. ALL PIPE ELEVATIONS ARE INVERT ELEVATIONS.
11. ALL WATER MAINS TO BE D.I.P. CLASS 52 UNLESS OTHERWISE NOTED.
12. TOP OF ALL WATER MAINS SHALL HAVE A MINIMUM OF 3-1/2' COVER UNLESS OTHERWISE NOTED.
13. VALVES ADJACENT TO TEES SHALL BE STRAPPED TO TEES.
14. ALL WATER MAIN FITTINGS REQUIRE CONCRETE THRUST BLOCKS AS DESCRIBED IN HOWARD COUNTY STANDARD SPECIFICATIONS AND DETAILS MANUAL, VOLUME IV.
15. THE CONTRACTOR SHALL NOT OPERATE ANY WATER MAIN VALVES ON THE EXISTING SYSTEM.
16. CLEAR ALL UTILITIES BY A MINIMUM OF 12", CLEAR ALL POLES BY 2'-8" MINIMUM OR TUNNEL AS REQUIRED. ANY COST INCURRED TO THE CONTRACTOR FOR TUNNELING OR BRACING AT POLES SHALL BE INCLUDED IN UNIT PRICES BID FOR EXCAVATION AND SHALL BE INCLUDED IN UNIT PRICES BID FOR EXCAVATION BACKFILL.
17. SEPARATION BETWEEN WATER AND SANITARY SEWER: WATER MAINS SHALL BE LAID AT LEAST TEN FEET (10') HORIZONTALLY FROM ANY EXISTING OR PROPOSED SEWER. DEVIATION MAY BE ALLOWED FOR INSTALLATION OF THE WATER MAIN CLOSER TO A SEWER, PROVIDED THAT THE WATER MAIN IS LAID IN A SEPARATE TRENCH, SUCH THAT THE BOTTOM OF THE WATER MAIN IS AT LEAST SIX FEET (6') ABOVE THE TOP OF THE SEWER. WATER MAINS CROSSING SEWERS SHALL BE LAID TO PROVIDE A MINIMUM VERTICAL DISTANCE OF TWELVE INCHES (12") BETWEEN THE BOTTOM OF THE WATER MAIN AND THE TOP OF THE SEWER LINE.
18. BURY LINE ELEVATIONS ON FIRE HYDRANTS SHALL BE SET TO THE ELEVATIONS SHOWN ON THE DRAWINGS. ALL FIRE HYDRANTS SHALL BE STRAPPED AND BUTTRESSED WITH CONCRETE IN ACCORDANCE WITH STANDARD DETAILS. SOIL AROUND THE FIRE HYDRANT SHALL BE COMPACTED IN ACCORDANCE WITH SECTIONS 1000 AND 1005 OF THE STANDARD SPECIFICATIONS.
19. ALL WATER HOUSE CONNECTIONS SHALL BE FOR AN INSIDE METER SETTING. TWIN WATER HOUSE CONNECTIONS SHALL BE INSTALLED PER HO. CO. STD. DETAIL W-3-23.
20. ALL SEWER MAINS SHALL BE C.S.P.X., R.C.S.P., V.C.P.X., OR P.V.C. UNLESS OTHERWISE NOTED.
21. THE CONTRACTOR SHALL PROVIDE A JOINT IN ALL SEWER MAINS WITHIN 2'-0" OF EXTERIOR MANHOLE WALL.
22. ALL MANHOLES SHALL BE 4'-0" INSIDE DIAMETER, UNLESS OTHERWISE NOTED.
23. ALL FIRE HYDRANTS SHALL BE SITUATED PER "LOCATION A", STD. DETAIL W1.11.
24. ALL D.I.P. FITTINGS SHALL BE IN ACCORDANCE WITH AWWA SPECIFICATION C153 DUCTILE IRON COMPACT FITTINGS, 3-INCH THROUGH 12-INCH FOR WATER AND OTHER LIQUIDS.
25. SERVICE CLAMPS ARE TO HAVE STAINLESS STEEL STRAPS.

QUANTITIES			
ITEM	ESTIMATED	AS BUILT	MATERIAL/SUPPLIER
8" SEWER	2170'	2088 LF	E. T. I.
MANHOLE	14	14 EA.	Atlantic Conc Prod.
8" WATER	1470'	1474 LF	Griffin Pipe Prod.
12" WATER	1880'	1843 LF	"
8" VALVE	7	7 EA.	Kennedy
12" VALVE	6	6 EA.	Kennedy
FIRE HYDRANT	7	7 EA.	Kennedy
AIR RELEASE MANHOLE	1	1 EA.	Atlantic Conc Prod.
BLOW OFF VALVE	1	1 EA.	G.A. Industries
6" WATER	620'	610 LF	Kupferla
3/4" WHC	4570'	4871 LF	Griffin Pipe Prod.
6" VALVE	?	?	Halstead/Ford
4" SHC	4,180'	4983 LF	M & H
1" WHC	500'	409 LF	E. T. I.
			Halstead/Ford



TYPE OF BUILDINGS	TOWNHOUSES
NUMBER OF LOTS	120
NUMBER OF WATER HOUSE CONNECTIONS	114
NUMBER OF SEWER HOUSE CONNECTIONS	114
DRAINAGE AREA	LITTLE PATUXENT

CONTRACT NO. 24-1889-D WATER AND SEWER CONSTRUCTION PLANS

LEGEND

PROPOSED	EXISTING
SANITARY SEWER	---
SEWER HOUSE CONNECTION	---
WATER	---
WATER HOUSE CONNECTION	---
STORM DRAIN	---
PROPOSED R/W	---
EXISTING CONTOURS	---
LIMITS OF SUBMISSION	---
MANHOLE NUMBER	---
FIRE HYDRANT-/VALVE	---
EASEMENT	---

SEDIMENT CONTROL MEASURES FOR THIS CONTRACT WILL BE IMPLEMENTED IN ACCORDANCE WITH SECTION 219 OF THE HOWARD COUNTY DESIGN MANUAL AND STANDARDS AND SPECIFICATIONS FOR SOIL EROSION AND SEDIMENT CONTROL IN DEVELOPING AREAS AND ALSO AS SHOWN ON THE GRADING AND SEDIMENT CONTROL PLAN F-89-174 & 809-91-51

REVIEWED FOR HOWARD SOIL CONSERVATION DISTRICT AND MEETS TECHNICAL REQUIREMENT
 Signature: *[Handwritten Signature]* DATE: 1-10-91

THIS DEVELOPMENT PLAN IS APPROVED FOR SOIL EROSION AND SEDIMENT CONTROL BY THE HOWARD COUNTY CONSERVATION DISTRICT.
 APPROVED: *[Handwritten Signature]* DATE: 1/9/91
 HOWARD SCD

LOT NO.	CELLAR ELEV.	SHC ELEV. @ P/L	LOT NO.	CELLAR ELEV.	SHC ELEV. @ P/L	LOT NO.	CELLAR ELEV.	SHC ELEV. @ P/L	LOT NO.	CELLAR ELEV.	SHC ELEV. @ P/L
1-1	228.67	222.91	1-34	200.67	194.77	1-67	192.00	186.64	1-100	215.67	203.95
1-2	228.67	222.54	1-35	200.00	194.14	1-68	192.00	187.29	1-101	217.00	204.69
1-3	228.67	222.19	1-36	200.00	193.91	1-69	192.00	187.62	1-102	217.00	205.44
1-4	228.67	221.83	1-37	199.33	193.86	1-70	192.00	186.27	1-103	218.33	206.19
1-5	228.67	221.47	1-38	199.33	192.22	1-71	194.67	186.92	1-104	218.33	206.94
1-6	228.67	219.15	1-39	198.66	191.84	1-72	194.67	189.64	1-105	219.67	207.68
1-7	224.00	218.40	1-40	198.66	192.00	1-73	203.00	192.00	1-106	219.67	208.43
1-8	224.00	218.04	1-41	198.00	190.64	1-74	203.00	192.64	1-107	222.67	209.18
1-9	221.85	216.35	1-42	198.00	190.64	1-75	203.00	192.64	1-108	222.67	211.20
1-10	221.85	215.99	1-43	197.33	189.69	1-76	203.00	192.64	1-109	224.00	211.92
1-11	219.35	214.83	1-44	197.33	188.91	1-77	203.00	192.93	1-110	224.00	212.68
1-12	219.35	214.47	1-45	192.33	187.99	1-78	203.00	193.05	1-111	225.33	213.44
1-13	217.35	213.31	1-46	192.33	187.99	1-79	203.00	193.14	1-112	225.33	214.20
1-14	217.35	212.95	1-47	191.66	186.89	1-80	203.00	193.60	1-113	227.33	214.96
1-15	216.00	212.59	1-48	191.66	186.89	1-81	203.00	193.60	1-114	227.33	215.72
1-16	216.00	212.23	1-49	189.67	183.30	1-82	207.00	201.59			
1-17	216.00	211.87	1-50	189.67	183.42	1-83	208.33	201.83			
1-18	213.35	211.44	1-51	188.33	183.44	1-84	208.33	202.07			
1-19	213.35	211.08	1-52	188.33	183.44	1-85	209.67	202.30			
1-20	212.00	206.77	1-53	186.99	183.62	1-86	209.67	202.54			
1-21	212.00	206.41	1-54	186.99	183.62	1-87	209.67	202.78			
1-22	210.00	205.27	1-55	186.99	183.98	1-88	209.67	203.02			
1-23	208.67	204.33	1-56	186.99	184.10	1-89	209.67	203.26			
1-24	208.67	203.97	1-57	185.66	184.30	1-90	209.67	203.50			
1-25	207.00	201.01	1-58	185.66	184.16	1-91	206.33	204.14			
1-26	207.00	200.65	1-59	185.66	184.35	1-92	206.33	204.38			
1-27	205.00	200.32	1-60	185.66	184.58	1-93	217.00	204.05			
1-28	205.00	199.96	1-61	185.66	184.81	1-94	217.00	203.81			
1-29	203.67	199.05	1-62	185.66	185.51	1-95	217.00	203.58			
1-30	203.67	198.69	1-63	181.00	185.97	1-96	217.67	203.34			
1-31	203.67	198.33	1-64	181.00	186.43	1-97	217.67	203.10			
1-32	202.33	197.77	1-65	181.00	187.14	1-98	217.67	202.86			
1-33	202.33	197.41	1-66	181.00	186.72	1-99	215.67	203.20			

DEPARTMENT OF PUBLIC WORKS
 HOWARD COUNTY, MARYLAND
 Director of Public Works: *[Signature]* DATE: 1-13-91
 Chief, Bureau of Engineering: *[Signature]* DATE: 1/14/91
 Chief, Bureau of Utilities: *[Signature]* DATE: 1-9-91
 Chief, Land Development Division: *[Signature]* DATE: 1/14/91

PHR&A
 PATTON, HARRIS, RUST & ASSOCIATES, PC
 7609 STANDISH PLACE
 ROCKVILLE, MARYLAND 20855
 METRO: 301-762-2220 BALT.: 301-792-7244

DES: K.O.R.	6	ISSUED TO HO. CO. FOR SIGNATURE	12-26-90
DRN:	5	REVISED PER COMMENTS OF 8-27-90	8-10-90
CHK:	4	REVISED PER COMMENTS OF 8-1-90	8-20-90
	3	REVISED PER HO COUNTY COMMENTS	
	2	REVISED PER HO COUNTY COMMENTS	7-7-89
	1	ISSUED TO HOWARD COUNTY	6-5-89
DATE:	BY NO	REVISION	DATE

OWNER/DEVELOPER
GORMAN ROAD LIMITED PARTNERSHIP
 C/O JAMES F. KNOTT DEVELOPMENT CORPORATION
 118 WEST ROAD, SUITE 283
 TOWSON, MARYLAND 21284
 (301) 321-6436

TITLE SHEET

BOWLING BROOK FARMS
 CONTRACT NO. 24-1889-D
 PARCEL C
 LOTS I-I THRU I-117, LOTS 223 & 224
 A RESUBDIVISION OF LOT 220, BOWLING BROOK FARMS
 TAX MAP 47 PARCEL 141 L 1394 F. 632
 SIXTH ELECTION DISTRICT HOWARD COUNTY, MARYLAND

SCALE AS SHOWN
 SHEET 1 OF 4

NOTES:
 1. ALL SEWER HOUSE CONNECTIONS TO BE 4" UNLESS NOTED OTHERWISE
 2. ALL WATER HOUSE CONNECTIONS TO BE 3/4"

SECTION-3 AREA-2
 PARCEL "E"
 BOWLING BROOK FARMS
 GORMAN ROAD LTD. PARTNERSHIP
 PLAT # 7344

SECTION-4 AREA-2
 PARCEL "H"
 BOWLING BROOK FARMS
 GORMAN ROAD LTD. PARTNERSHIP
 L1828 F. 632

10+04
 REMOVE CAP & BUTTRESS
 & CONNECT TO EXISTING 12" W

PROPOSED 3-CELL
 BOX CULVERT
 (REFER TO PAVING &
 STORM DRAIN PLANS
 F-09-174)

PROVIDE STREAM PROTECTION AND
 EROSION & SEDIMENT CONTROL PER
 THE PAVING & STORM DRAIN PLANS
 SHTS. M-15-116 (F-09-174)

13" BLOW OFF VALVE (O.V.)
 (REFER TO HO. CO. STD.
 DETAIL W.473)

KNIGHTS

HAMMONDS

COURT

STEEPLE

BURRY
 LANE

BRIDGE

PARCEL "C"
 BOWLING BROOK FARMS
 GORMAN ROAD LTD. PARTNERSHIP
 L1828 F. 632

PLAN SCALE:
 1"=50'

ROAD

BRANCH

SECTION-1 AREA-2
 BOWLING BROOK FARMS
 GORMAN ROAD LTD. PARTNERSHIP
 PLAT # 7364

OPEN SPACE
 LOT I-117

OPEN SPACE
 LOT I-115

OPEN SPACE
 LOT I-117

DEPARTMENT OF PUBLIC WORKS
 HOWARD COUNTY, MARYLAND

Thomas J. ...
 Director of Public Works

Ralph ...
 Chief, Bureau of Utilities

DATE: 1-4-91

12/26/90
 6/14/91
 7-7-91
 6-5-90

ISSUED TO HOWARD CO. FOR SIGNATURE
 REVISED PER COMMENTS OF 8-27-90
 REVISED PER COMMENTS OF 5-1-90
 REVISED PER HOWARD COUNTY COMMENTS
 REVISED PER HO. COUNTY COMMENTS
 ISSUED TO HOWARD COUNTY

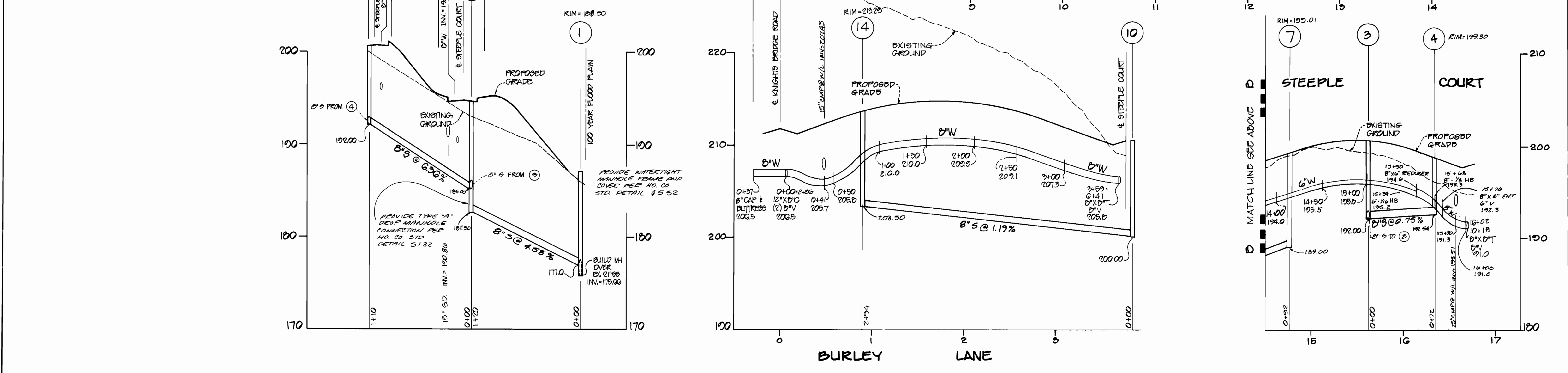
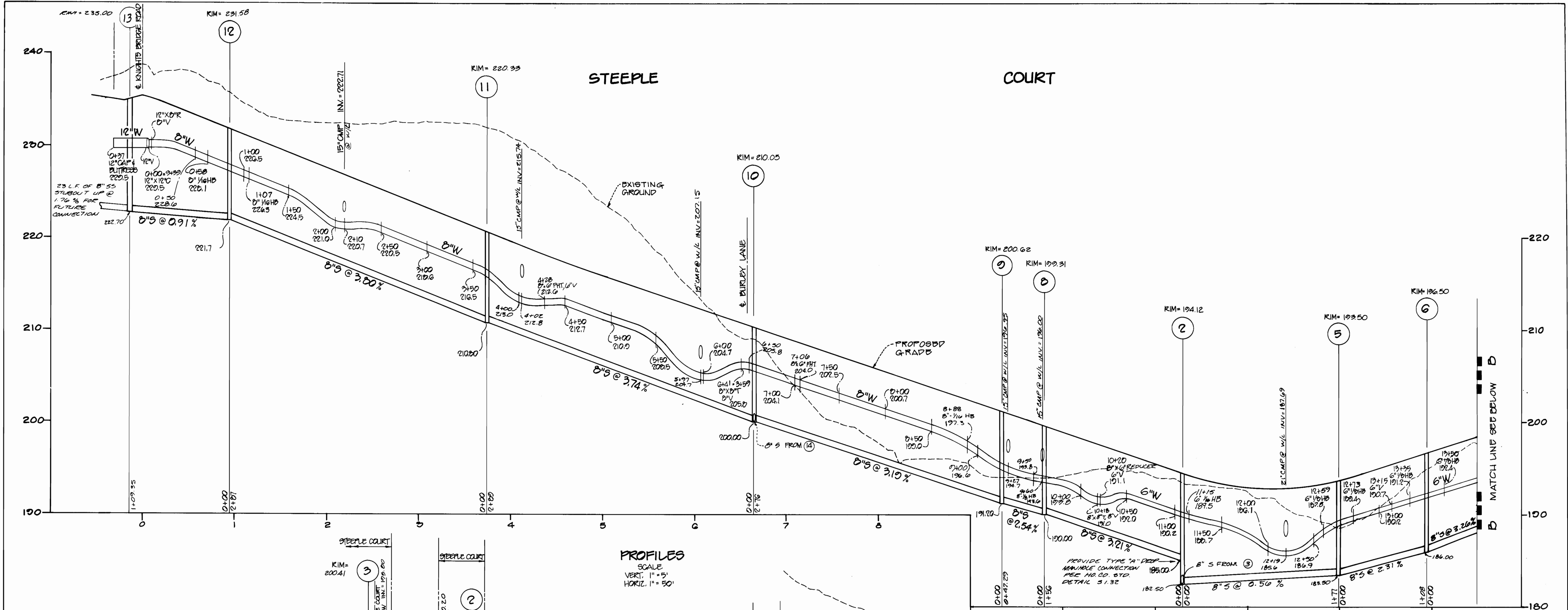
PLAN
 WATER & SEWER MAINS

600' SCALE MAP NO. 47 BLOCK NO.

BOWLING BROOK FARMS
 CONTRACT NO. 24-1889-D
 PARCEL C
 LOTS I-1 THRU I-117, LOTS 223 & 224
 A RESUBDIVISION OF LOT 220, BOWLING BROOK FARMS
 TAX MAP 47 PARCEL 141 L 1394 F. 632
 SIXTH ELECTION DISTRICT HOWARD COUNTY, MARYLAND

SCALE AS SHOWN

SHEET 2 OF 4



DEPARTMENT OF PUBLIC WORKS
HOWARD COUNTY, MARYLAND

Robert W. Benge 1-4-91
DIRECTOR OF PUBLIC WORKS DATE

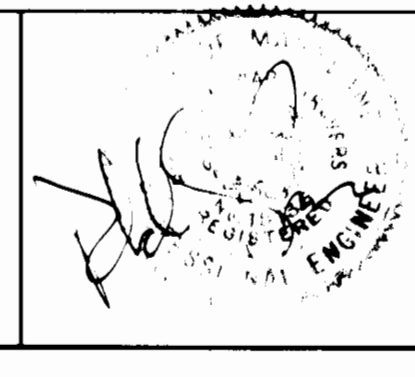
James M. Benge 1-4-91
CHIEF BUREAU OF UTILITIES DATE

James M. Benge 1-4-91
CHIEF BUREAU OF UTILITIES DATE

James M. Benge 1-4-91
CHIEF BUREAU OF UTILITIES DATE

PHWA

PATTON, HARRIS, RUST & ASSOCIATES, P.C.
1608 STANDISH PLACE
ROCKVILLE, MARYLAND 20855
48720; 301-762-2320 BALT.: 301-762-7268



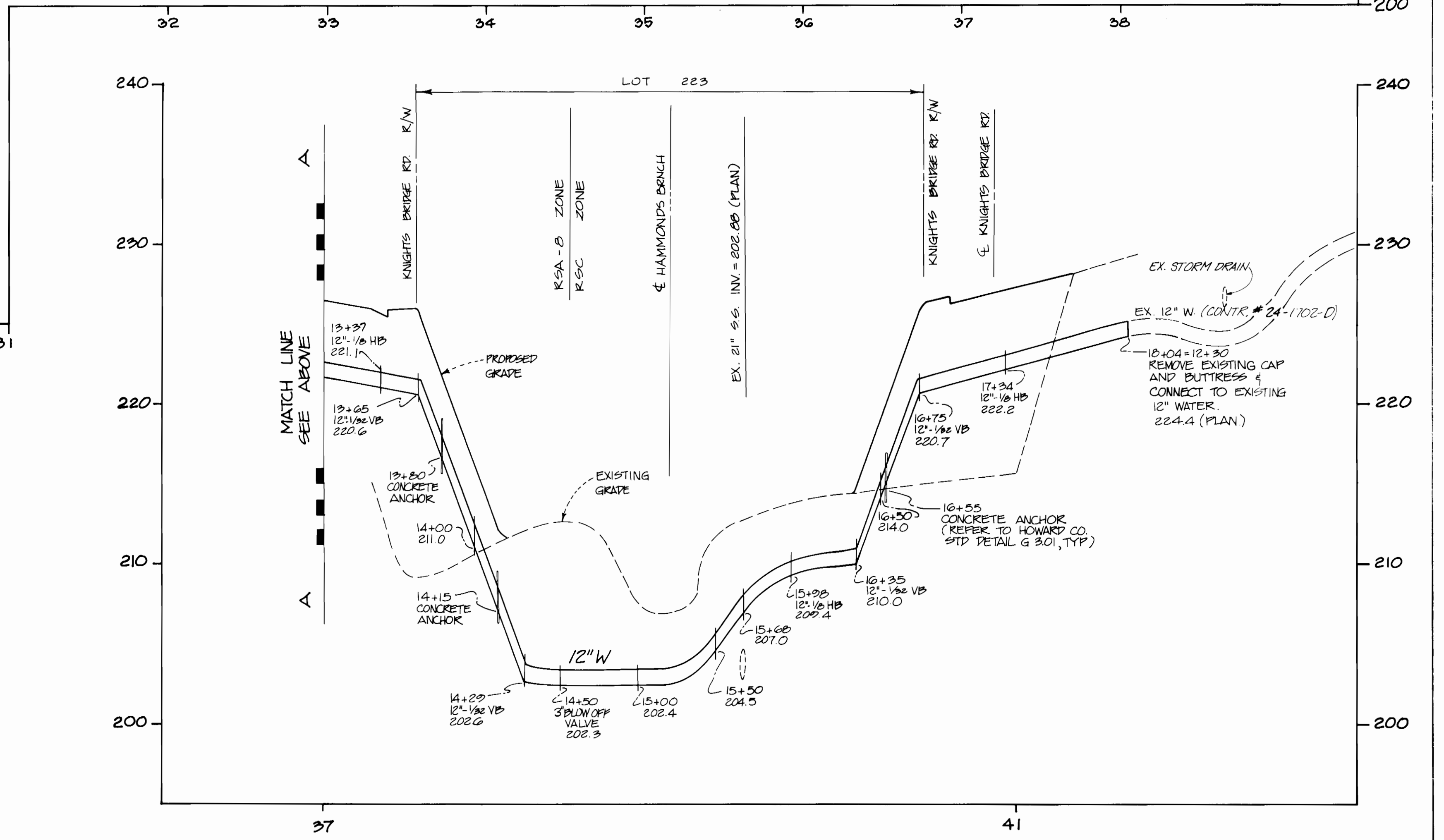
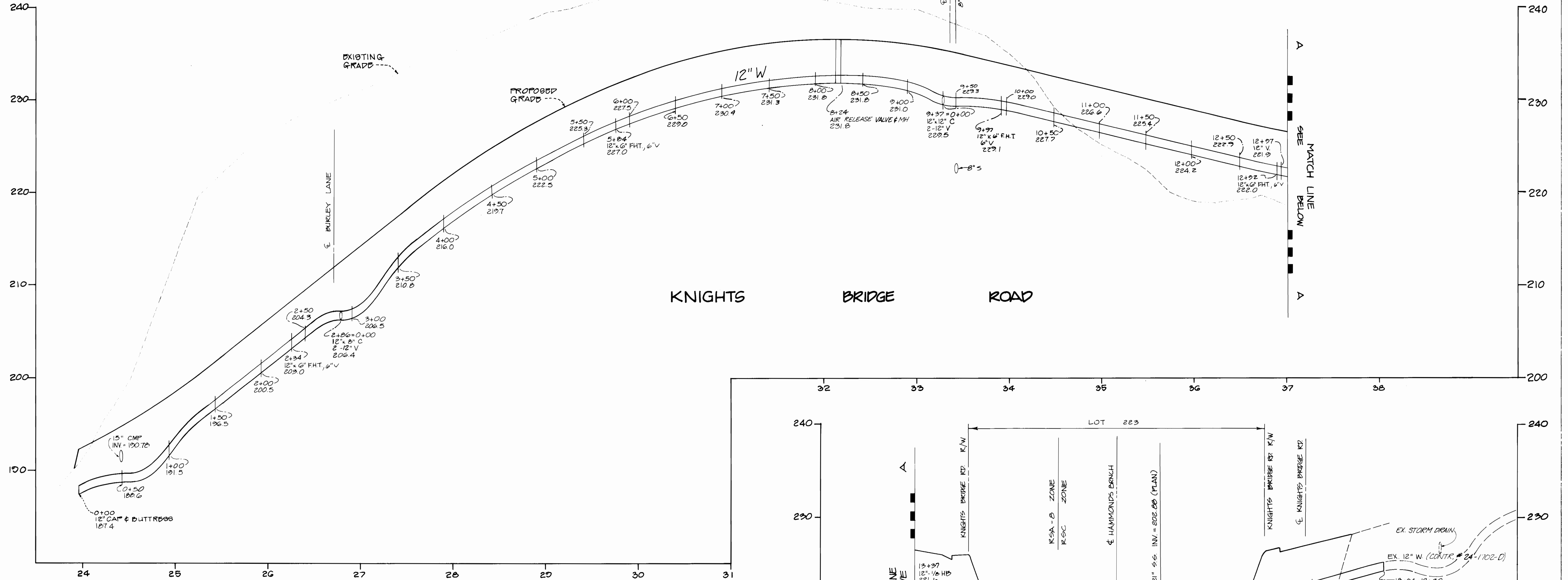
DES:	KOR	6	ISSUED TO HOWARD CO. FOR SIGNATURES	11-24-90
DRN:		5	REVISED PER COMMENTS OF 8-27-90	
		4	REVISED PER COMMENTS OF 5-1-90	6-28-90
		3	REVISED PER HOWARD COUNTY COMMENTS	
CHK:		2	REVISED PER HO. COUNTY COMMENTS	7-7-89
		1	ISSUED TO HOWARD COUNTY	6-5-89
DATE:		BY	N.O.	REVISION

PROFILES
WATER AND SEWER MAINS

600' SCALE MAP NO. 47 BLOCK NO. _____

BOWLING BROOK FARMS
CONTRACT NO. 24-1889-D
PARCEL C
LOTS I-1 THRU I-17, LOTS 223 & 224
A RESUBDIVISION OF LOT 220, BOWLING BROOK FARMS
TAX MAP 47 PARCEL 141 L 1394 F 632
SIXTH ELECTION DISTRICT HOWARD COUNTY, MARYLAND

SCALE AS SHOWN
SHEET 3 OF 4



DEPARTMENT OF PUBLIC WORKS
HOWARD COUNTY, MARYLAND

James J. ...
CHIEF, BUREAU OF UTILITIES

Robert W. ...
DATE: 1-4-91

Michael ...
DATE: 1/12/91

John M. ...
DATE: 1/14/91

ALPURA

PATTON, HARRIS, HUST & ASSOCIATES, PC
7609 STANDISH PLACE
ROCKVILLE, MARYLAND 20858
METRO: 301-762-2320 BALT.: 301-768-7284

11. K.O.R.

12-26-90

6-28-90

7-7-89

6-5-89

ISSUED TO HOWARD CO FOR SIGNATURE
REVISED PER COMMENTS OF 8-27-90
REVISED PER COMMENTS OF 5-1-90
REVISED PER HOWARD COUNTY COMMENTS
REVISED PER HO. COUNTY COMMENTS
ISSUED TO HOWARD CO.

PROFILES
WATER MAINS

SCALE MAP NO. 47

BOWLING BROOK FARMS
CONTRACT NO. 24-1889-D
PARCEL C
LOTS 1-I THRU I-17, LOTS 222 & 223
A RESUBDIVISION OF LOT 220, BOWLING BROOK FARMS
TAX MAP 47 PARCEL 141 L.1394 F.632
SIXTH ELECTION DISTRICT HOWARD COUNTY, MARYLAND

SCALE AS SHOWN

SHEET 4 OF 4

SEWER				WATER				
LOT #	STRUCTURE #	DISTANCE	STRUCTURE #	DISTANCE	STRUCTURE #	DISTANCE	STRUCTURE #	DISTANCE
1	12	57.5'	44	91.0'	12	49.5'	44	81.2'
2	12	44.9'	44	74.6'	12	37.2'	44	63.0'
3	12	32.0'	44	46.5'	12	34.7'	44	56.2'
4	12	40.8'	44	34.5'	12	35.4'	44	40.5'
5	12	56.2'	44	31.8'	12	47.0'	44	31.2'
6	12	73.5'	44	34.0'	12	61.4'	44	41.8'
7	12	88.5'	44	53.0'	12	79.4'	44	45.1'
8	12	108.8'	44	71.8'	12	99.5'	44	62.5'
9	39	63.0'	43	69.6'	39	59.1'	43	80.0'
10	39	74.5'	43	50.5'	39	67.5'	43	63.8'
11	39	88.8'	11	98.5'	39	80.0'	43	43.6'
12	38	84.5'	11	80.9'	38	94.8'	11	90.5'
13	38	67.5'	11	65.0'	38	76.3'	11	73.5'
14	38	47.0'	11	47.5'	38	56.1'	11	55.8'
15	38	39.6'	41	99.5'	38	34.7'	41	93.8'
16	38	29.2'	41	85.0'	38	27.1'	41	78.0'
17	38	60.0'	41	58.2'	38	51.3'	41	59.2'
18	38	79.1'	41	62.5'	38	67.5'	41	59.9'
19	38	98.3'	41	72.0'	38	88.0'	41	64.9'
20	36	91.2'	41	87.1'	36	102.5'	41	78.6'
21	36	73.1'	41	101.7'	36	82.9'	41	93.0'
22	36	55.0'	37	92.1'	36	63.8'	37	100.1'
23	36	38.9'	37	77.9'	36	46.9'	37	84.8'
24	36	30.2'	37	68.0'	36	32.9'	37	71.9'
25	10	44.4'	31	100.5'	10	53.4'	34	57.1'
26	10	32.0'	31	84.5'	10	41.7'	31	75.7'
27	10	32.9'	31	70.8'	10	34.0'	31	80.5'
28	10	43.5'	31	62.0'	10	38.5'	31	69.0'
29	28	85.5'	31	58.0'	28	96.3'	31	59.8'
30	28	68.2'	31	61.0'	28	76.8'	31	60.7'
31	28	48.7'	31	69.5'	28	59.2'	31	65.5'
32	28	34.5'	31	82.8'	28	41.8'	31	76.0'
33	27	59.5'	29	12.0'	27	70.5'	35	34.0'
34	27	42.5'	9	96.8'	27	50.9'	35	45.9'
35	27	31.2'	9	85.6'	27	29.8'	35	73.0'
36	27	23.1'	9	71.0'	27	20.9'	35	90.2'
37	27	33.8'	9	47.4'	27	25.0'	9	54.4'
38	27	49.3'	9	38.1'	27	38.3'	9	40.6'
39	27	61.1'	9	35.5'	27	64.0'	9	33.3'
40	27	74.6'	9	38.5'	27	82.2'	9	42.1'
41	15	91.9'	26	90.0'	15	84.0'	26	82.1'
42	15	69.1'	26	68.7'	15	77.0'	26	75.9'
43	15	57.2'	26	58.1'	15	63.5'	26	63.5'
44	15	50.3'	26	53.3'	15	52.7'	26	54.5'
45	15	48.8'	16	104.1'	15	47.8'	26	51.7'
46	15	56.2'	16	89.9'	15	51.9'	16	91.1'
47	15	70.0'	16	77.9'	15	59.7'	16	81.1'
48	15	85.4'	16	70.5'	15	75.5'	16	70.9'
49	13	60.0'	14	76.0'	13	61.0'	14	81.6'
50	13	64.9'	14	65.5'	13	45.9'	14	73.7'
51	13	38.4'	14	61.7'	13	31.2'	14	57.0'
52	13	21.1'	14	54.4'	5	92.7'	1	104.3'
53	5	70.4'	1	78.1'	5	80.7'	1	91.0'
54	5	55.3'	1	63.0'	5	66.0'	1	73.0'
55	5	49.8'	1	55.1'	5	44.2'	1	43.9'
56	5	39.3'	1	34.0'	5	35.2'	1	22.9'
57	5	55.0'	1	17.0'	5	43.6'	1	23.0'
58	5	35.9'	1	35.5'	5	38.7'	1	27.0'
59	5	34.9'	1	49.5'	5	35.9'	1	44.0'
60	5	39.9'	1	62.5'	5	46.1'	1	72.5'
61	5	52.5'	1	82.9'	5	59.8'	1	95.5'
62	5	69.2'	1	103.3'	5	77.0'	21	38.8'
63	5	87.0'	21	26.2'	5	95.1'	21	18.7'
64	21	7.6'	20	12.3'	22	34.4'	23	35.2'
65	21	37.3'	22	13.0'	21	36.8'	23	11.5'
66	21	37.9'	22	14.1'	21	36.8'	22	9.0'
67	21	49.8'	7	100.3'	21	42.9'	6	36.6'
68	21	56.9'	7	88.0'	21	63.0'	7	63.5'
69	21	69.4'	7	71.7'	21	81.0'	7	82.0'
70	21	89.0'	7	58.3'	21	100.0'	7	48.8'
71	3	106.9'	7	40.5'	3	98.9'	7	37.6'
72	3	86.9'	7	34.8'	3	81.1'	7	36.0'
73	3	44.8'	7	60.4'	3	38.0'	7	69.2'
74	3	32.5'	7	85.5'	3	37.9'	7	74.5'
75	3	36.3'	7	102.5'	3	33.0'	7	93.3'
76	3	40.7'	4	58.5'	3	49.2'	4	49.5'
77	3	56.0'	4	41.9'	3	64.5'	4	34.5'
78	3	74.2'	4	31.2'	3	83.4'	4	29.0'
79	3	92.6'	4	30.6'	3	101.5'	4	35.8'
80	25	80.0'	4	47.0'	25	78.7'	4	43.4'
81	46	60.4'	48	79.4'	46	60.5'	48	69.5'
82	46	64.2'	48	59.3'	46	71.8'	48	53.2'
83	46	74.1'	48	44.9'	46	81.9'	48	36.0'
84	46	93.0'	48	30.7'	46	99.0'	48	27.0'
85	51	108.0'	48	28.0'	51	96.4'	48	36.5'
86	51	86.8'	48	36.2'	51	75.9'	48	44.7'
87	51	68.6'	48	50.0'	51	57.7'	48	59.7'
88	51	47.0'	48	69.5'	51	38.0'	48	78.9'
89	51	13.5'	49	97.5'	51	19.5'	49	92.5'
90	51	30.1'	49	86.0'	51	38.5'	49	81.2'

SEWER				WATER				
LOT #	STRUCTURE #	DISTANCE	STRUCTURE #	DISTANCE	STRUCTURE #	DISTANCE	STRUCTURE #	DISTANCE
91	51	50.9'	49	74.9'	51	58.0'	49	73.9'
92	51	67.3'	49	70.8'	51	78.0'	49	71.5'
93	51	79.5'	49	67.3'	51	82.7'	49	57.0'
94	51	77.5'	49	84.4'	51	77.5'	49	75.9'
95	51	81.7'	49	106.0'	51	81.2'	49	79.3'
96	51	92.0'	48	87.4'	51	87.7'	48	73.5'
97	51	103.0'	48	73.1'	51	98.8'	48	81.7'
98	51	117.0'	48	62.7'	51	110.4'	48	68.5'
99	46	38.1'	36	57.1'	46	45.9'	36	58.0'
100	45	97.6'	36	59.0'	45	89.3'	36	58.8'
101	45	80.5'	36	59.0'	45	73.9'	36	66.0'
102	45	67.5'	36	71.5'	45	62.2'	42	101.4'
103	45	55.5'	42	90.0'	45	58.7'	42	84.6'
104	45	55.9'	42	72.5'	45	57.8'	42	64.0'
105	45	59.2'	42	55.5'	45	65.2'	42	50.3'
106	45	69.3'	42	39.3'	45	74.1'	42	35.1'
107	38	59.5'	11	54.3'	38	56.0'	11	49.3'
108	38	54.5'	11	45.2'	38	59.6'	11	44.8'
109	38	81.8'	11	46.0'	38	61.9'	11	48.2'
110	38	68.3'	11	54.3'	38	72.5'	11	58.2'
111	38	79.0'	11	65.0'	38	86.0'	11	72.3'
112	39	92.0'	40	103.3'	39	83.7'	40	78.1'
113	39	75.0'	40	91.3'	39	66.0'	40	84.1'
114	39	47.1'	40	77.2'	39	47.1'	40	69.8'

STRUCTURE # DESCRIPTION

- 1 S.D. MH-4
- 2 SAN. MH-2
- 3 SAN. MH-3
- 4 SAN. MH-4
- 5 SAN. MH-5
- 6 SAN. MH-6
- 7 SAN. MH-7
- 8 SAN. MH-8
- 9 SAN. MH-9
- 10 SAN. MH-10
- 11 SAN. MH-11
- 12 SAN. MH-12
- 13 S. COR. WQ-1A
- 14 S. COR. WQ-1B
- 15 G" VALVE FRONT LOTS 45, 46
- 16 S.D. MH-2
- 17 CURB STOP BOX - LOT - 57 W.H.C.
- 18 CURB STOP BOX - LOT - 58 W.H.C.
- 19 CURB STOP BOX - LOT - 59 W.H.C.
- 20 CURB STOP BOX - LOT - 63 W.H.C.
- 21 CURB STOP BOX - LOT - 64 W.H.C.
- 22 CURB STOP BOX - LOT - 65 W.H.C.
- 23 CURB STOP BOX - LOT - 66 W.H.C.
- 24 F.H. LOT - 116 OPEN SPACE
- 25 G" F.H. VALVE LOT - 116 OPEN SPACE
- 26 B" VALVE, FRONT LOTS 44, 45
- 27 S.D. MH-1
- 28 S.D. INLET I-5 LEFT COR.
- 29 CURB STOP BOX - LOT - 33 W.H.C.
- 30 CURB STOP BOX - LOT - 34 W.H.C.
- 31 F.H. NEAR LOT - 80
- 32 G" F.H. VALVE NEAR LOT - 80
- 33 B" VALVE (EAST) @ STEEPLE CT. & BURLEY LN.
- 34 B" VALVE (WEST) @ STEEPLE CT. & BURLEY LN.
- 35 S.D. INLET I-5 RIGHT COR.
- 36 S.W. COR. WQ-2
- 37 S.D. INLET I-7
- 38 S.W. COR. WQ-3
- 39 S.D. INLET I-11
- 40 S.D. INLET I-10
- 41 F.H. LOT - 106
- 42 G" F.H. VALVE LOT - 106
- 43 FACE/CURB - POINT OF ISLAND - FRONT LOTS 12, 13
- 44 FACE/CURB - POINT OF ISLAND - FRONT LOT 5
- 45 FACE/CURB - POINT OF ISLAND - FRONT LOTS 20, 21
- 46 S.D. INLET I-8
- 47 SAN. MH - 14
- 48 FACE/CURB - POINT OF ISLAND - FRONT LOTS 84-85
- 49 S.D. INLET I-14
- 50 INSIDE BACK COR. CURB, PARKING SPACE LOT 84
- 51 INSIDE BACK COR. CURB, PARKING SPACE LOT 89
- 52 CURB STOP BOX - LOT - 24 W.H.C.
- 53 CURB STOP BOX - LOT - 23 W.H.C.
- 54 F.H. KNIGHTS BRIDGE & STEEPLE CT.

AS-BUILTS FOR WATER & SEWER HOUSE CONNECTIONS

BOWLING BROOK FARMS

CONTRACT NO. 24-1889-D
PARCEL - C

LOTS I-1 THRU I-117, 223 & 224