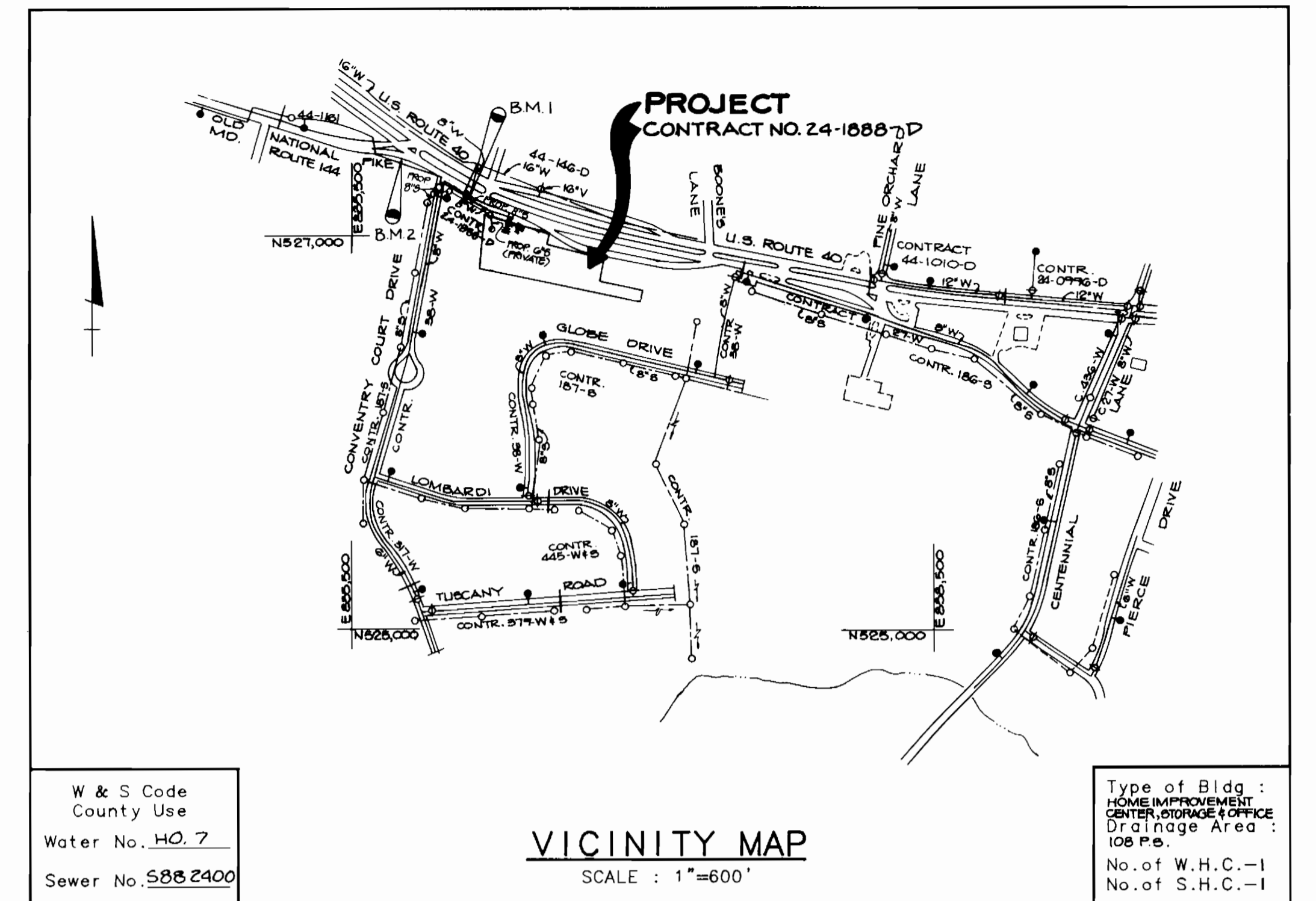


CLARK'S DO-IT CENTER

CONTRACT No. 24-1888-D

2ND ELECTION DISTRICT

HOWARD COUNTY, MARYLAND



W & S Code
County Use
Water No. HO 7
Sewer No. S882400

VICINITY MAP
SCALE: 1"=600'

Type of Bldg.:
HOME IMPROVEMENT
CENTER, STORAGE & OFFICE
Drainage Area:
JOB P.O.
No. of W.H.C.-1
No. of S.H.C.-1

GENERAL NOTES

26. ALL D.I.P. FITTINGS SHALL BE IN ACCORDANCE WITH AWWA SPECIFICATION C-153 DUCTILE IRON COMPACT FITTINGS, 3" THROUGH 12" FOR WATER AND OTHER LIQUIDS.

1. Approximate location of existing mains are shown. The contractor shall take all necessary precautions to protect existing mains and services and maintain uninterrupted supply. Any damage incurred shall be repaired immediately to the satisfaction of the engineer at the contractor's expense.
2. All horizontal controls are based on Maryland State coordinates.
3. All vertical controls are based on U.S.G.S. data.
4. All pipe elevations shown are \bigcirc invert elevations.
5. Clear all utilities by a minimum of 6".
6. For details not shown on the drawings, and for materials and construction methods, use Howard County Design Manual, Volume IV, Standard Specifications and Details for Constructions. The contractor shall have a copy of Volume IV on the job.
7. Where test pits have been made on existing utilities, they are noted by the symbol \square at the location of the test pit. A note or notes containing the results of the test pit or pits is included on the drawings. Existing utilities in the vicinity of the proposed work for which test pits have not been dug shall be verified by the contractor to his own personal satisfaction. Any damage to existing facilities due to the contractor's negligence shall be repaired at the contractor's expense.
8. The contractor shall notify the following utilities or agencies at least five working days before starting work shown on these plans:

State Highway Administration	531-5533
Baltimore Gas and Electric Co. - Contractor Services	850-4620
Baltimore Gas and Electric Co. - Underground Damage Control	859-9004
Baltimore Gas and Electric Co. - Trouble Shooting	298-9001
Miss Utility	1-559-0100
Colonial Pipeline Co.	795-1390
Bureau of Utilities, Ho.Co. Department of Public Works	315-4000
C & P Telephone Co.	1-800-257-7777
9. Trees and shrubs are to be protected from damage to maximum extent. Trees and shrubs located within the construction strip are not to be removed or damaged by the contractor.
10. The contractor shall remove trees, stumps and roots along line of excavation. Payment for such removal shall be included in the unit price bid for construction of the main.
11. All water mains to be D.I.P. Class 52 unless otherwise noted.
12. Tops of all water mains to have a minimum of 3'-1/2" cover unless otherwise noted.
13. Valves adjacent to tees shall be strapped to tees.
14. All fittings shall be buttressed or anchored with concrete in accordance with the Standard Details unless otherwise provided for on the drawings.
15. Fire hydrants shall be set to the bury line elevation shown on the drawings. All fire hydrants shall be strapped and buttressed with concrete in accordance with the Standard Details. Soil around the fire hydrant shall be compacted in accordance with Section 1003 of the Standard Specifications.
16. The contractor shall not operate any water main valves on the existing water system.
17. All water house connections shall be for inside meter setting, unless otherwise noted on the plans or in the Specifications.
18. Service clamps are to have stainless straps.
19. All sewer mains shall be C.S.P.X., R.C.S.P., V.C.P.X., A.C.P. Class 2400 or P.V.C. unless otherwise noted.
20. The contractor shall provide a joint in all sewer mains within 2'-0" of exterior manhole wall.
21. All manholes shall be 4'-0" inside diameter unless otherwise noted.
22. Force mains shall be D.I.P. only.
23. Manholes shown with 12" and 16" walls are for brick manholes only.
24. Manholes designated W.T. in plan and profile shall have watertight frame and covers, Standard Detail GS.52. Where watertight manhole frame and cover is used, set top of frame 1'-6" above finished grade unless otherwise noted on the drawings.
25. House(s) with the symbol "C.N.S." indicates that the cellar cannot be served.

BENCH MARKS

BM #3240003 (BNP No. 8) ELEV 488.109
N 527,189.105 E 836,120.995
CONCRETE MONUMENT 0.2 FEET ABOVE SURFACE
200 FEET EAST OF COVENTRY COURT DRIVE.

BM #3240001 ELEV 481.229
N 527,406.798 E 835,762.590
CONCRETE MONUMENT 0.3 FEET S SOUTH OF SOUTH CURB OF MD. RTE. 144 EAST BOUND RAMP, 100 FEET WEST OF COVENTRY COURT DRIVE.

Sediment control measures for this contract will be implemented in accordance with Section 219 of the Specifications and as shown on SDP-85-27

Reviewed for Howard Soil Conservation District and meets technical requirements.
J. Helmy 4/6/89
U.S. SOIL CONSERVATION SERVICE DATE

This plan is approved for soil erosion and sediment control by the Howard Soil Conservation District.
Stephen J. ... 4/6/89
HOWARD SOIL CONSERVATION DISTRICT DATE

Item	Quantities		Material Supplier
	Estimated	As Built	
8" SEWER	378 LF	352 LF	AMERICAN
MANHOLES	44 VF	44 VF	AMERICAN
8" WATER	286 LF	288 LF	GRIFFEN
6" WATER	29 LF	20.3 LF	GRIFFEN
FIRE HYDRANTS	1 EA.	1 EA.	MUELER
6" SEWER	113 LF	113 LF	AMERICAN (PRIVATE)
SANITARY MFC	4	4	E.A. QUIRIN

AS-BUILT
COMPLETED 8-15-89

TITLE SHEET

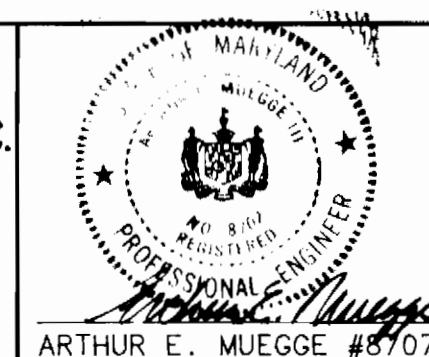
CLARKS DO-IT CENTER
2ND ELECTION DISTRICT
HOWARD COUNTY, MARYLAND
CONTRACT NO. 24-1888-D

SCALE
AS SHOWN

SHEET
1 OF 3

DEPARTMENT OF PUBLIC WORKS
HOWARD COUNTY, MARYLAND

RIEMER MUEGGE & ASSOCIATES INC.
3105 NORTH RIDGE ROAD
ELLCOTT CITY, MARYLAND
(301) 461-2690



DES: J.J.B.			
DRN: J.C.R.			
CHK:			
DATE: 8-15-89			
BY NO.			

W.A.D. 1
ADD'D SEWER ALIGNMENT ALONG RT 40, DELETED SEWER ALIGNMENT TO GLOBE DRIVE
9-15-91
DATE

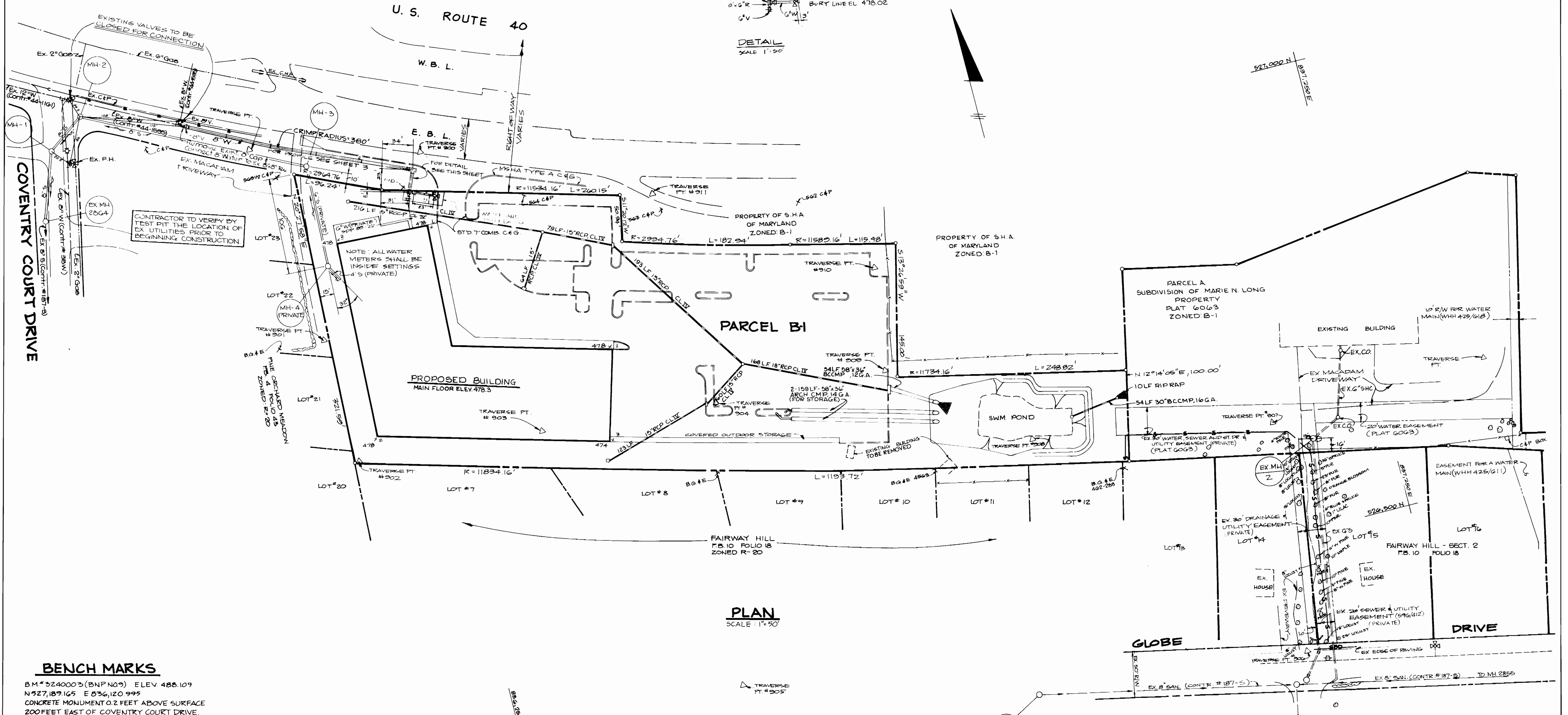
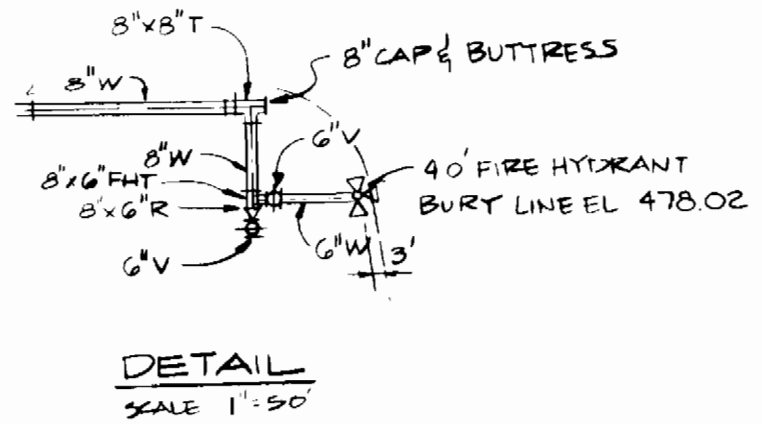
600' SCALE MAP NO. 24 BLOCK NO. 1

Robert W. ... 4/6/89
DIRECTOR OF PUBLIC WORKS DATE

Arthur E. Muegge 4/6/89
CHIEF, BUREAU OF ENGINEERING DATE

Arthur E. Muegge 4/6/89
CHIEF, LAND DEVELOPMENT DATE

CONTRACTOR WILL COORDINATE WITH HOWARD COUNTY BUREAU OF UTILITIES IN ADVANCE OF CONSTRUCTION FOR CLOSURE OF EXISTING VALVES.



PLAN SCALE 1"=50'

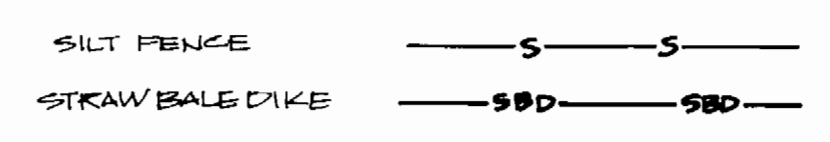
BENCH MARKS

B.M. #3240003 (BNP N03) ELEV. 488.109
 N527,189.165 E 836,120.995
 CONCRETE MONUMENT 0.2 FEET ABOVE SURFACE
 200 FEET EAST OF COVENTRY COURT DRIVE.

B.M. #3240001 ELEV. 481.229
 N527,406.798 E 835,742.590
 CONCRETE MONUMENT 0.3 FEET SOUTH OF SOUTH
 CURB OF MD. RTE. 144 EAST BOUND RAMP, 190
 FEET WEST OF COVENTRY COURT DRIVE.

NOTES

1. STRAW BALE DIKE MAY BE SUBSTITUTED FOR SILT FENCE WITH THE APPROVAL OF THE SEDIMENT CONTROL INSPECTOR.
2. FOR ON-SITE SEDIMENT CONTROL MEASURES SEE SHEETS 7 AND 8 OF 10 ON SDP-88-22



DEPARTMENT OF PUBLIC WORKS
 HOWARD COUNTY, MARYLAND

Director of Public Works: *[Signature]* 4/1/09
 Chief, Bureau of Engineering: *[Signature]* 4/1/09
 Chief, Bureau of Utilities: *[Signature]* 3-20-09
 Chief, Land Development: *[Signature]* 4/6/09

RIEMER MUEGGE & ASSOCIATES INC.
 3105 NORTH RIDGE ROAD
 ELLICOTT CITY, MARYLAND
 (301) 461-2690

[Signature]
 ARTHUR E. MUEGGE #8707

DES: J.J.B.			
DRN: J.C.R.			
CHK:			
RMA: 1	ADDED SEWER ALIGNMENT ALONG RT. 40, DELETED SEWER ALIGNMENT TO GLOBE DRIVE.	3/12/09	
BY: N.O.			
DATE: 8/15/08			

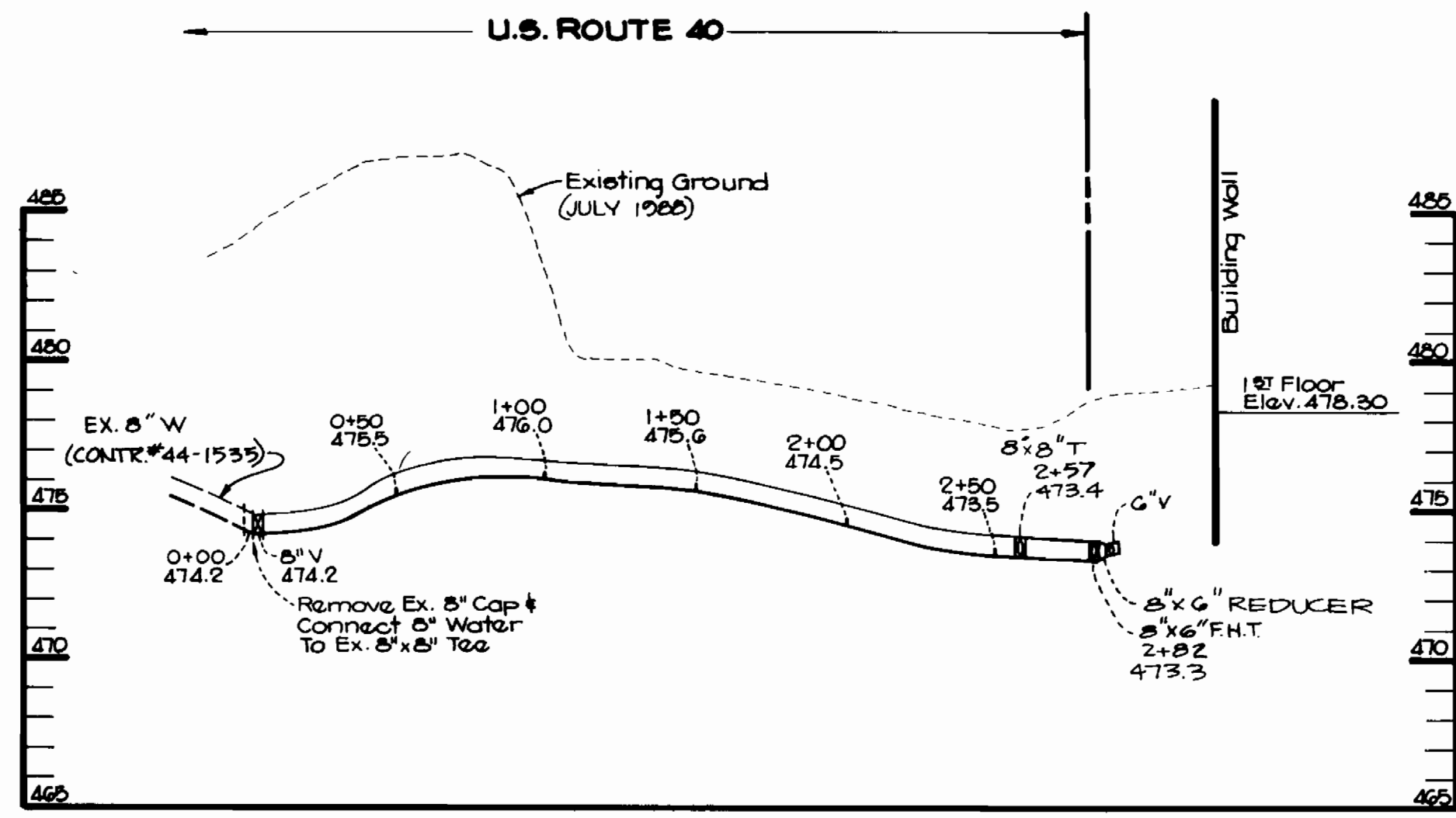
PLAN OF WATER AND SEWER MAINS

600' SCALE MAP NO. 24 BLOCK NO. 1

CLARK'S DO-IT CENTER
 2ND ELECTION DISTRICT
 HOWARD COUNTY, MARYLAND
 CONTRACT NO. 24-1888-D

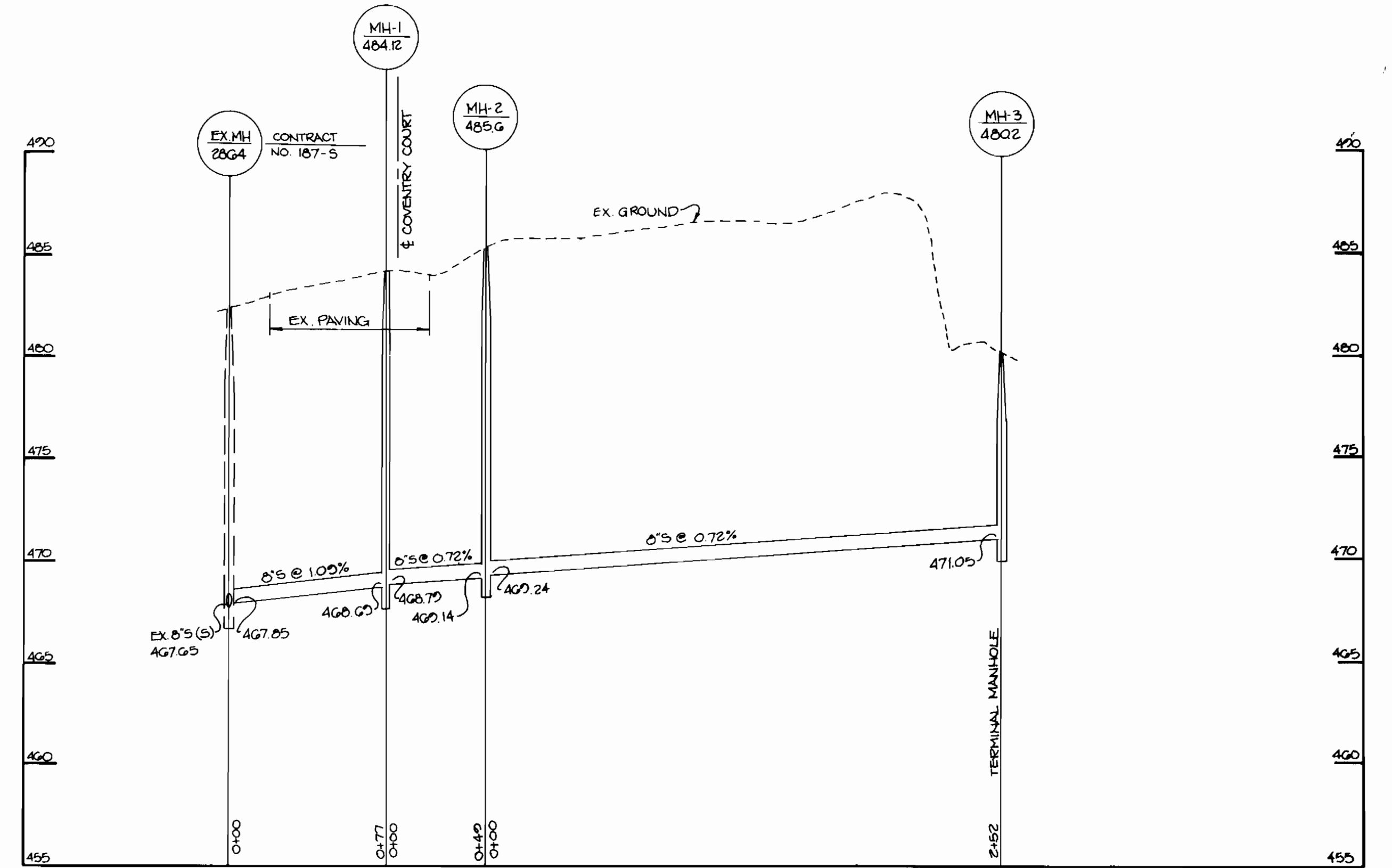
SCALE AS SHOWN
 SHEET 2 OF 3

DRAWING NO. 132-01150



WATER PROFILE

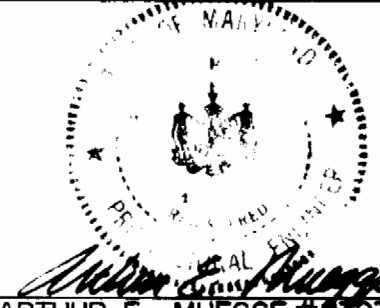
SCALE: HORIZ. 1" = 50'
VERT. 1" = 5'



SEWER PROFILE

SCALE: HOR. 1" = 50'
VER. 1" = 5'

BRUNING 44-132-00150

DEPARTMENT OF PUBLIC WORKS HOWARD COUNTY, MARYLAND Director of Public Works: <i>[Signature]</i> DATE: 3-20-89 Chief, Bureau of Utilities: <i>[Signature]</i> DATE: 4/6/89		RIEMER MUEGGE & ASSOCIATES INC. 3105 NORTH RIDGE ROAD ELLICOTT CITY, MARYLAND (301) 461-2690 Chief, Bureau of Engineering: <i>[Signature]</i> DATE: 4/18/89 Chief, Land Development: <i>[Signature]</i> DATE: 4/6/89		 DES: J.J.B. DRN: J.C.R. CHK: DATE: 8-15-88 RMA: 1 BY: NO.	PROFILES OF WATER AND SEWER MAINS	CLARK'S DO-IT CENTER 2ND ELECTION DISTRICT HOWARD COUNTY, MARYLAND CONTRACT NO. 24-1888-D	SCALE AS SHOWN SHEET 3 OF 3
---	--	--	--	---	--	---	--------------------------------

RMA: 1 BY: NO.	DATE: 8-15-88	3/12/91 ADDED SEWER ALIGNMENT ALONG RT. 40, DELETED SEWER ALIGNMENT TO GLOBE DRIVE.	DATE: 600' SCALE MAP NO. 24 BLOCK NO. 1
-------------------	---------------	--	---

CLARK'S DO-IT CENTER
 2ND ELECTION DISTRICT
 HOWARD COUNTY, MARYLAND
 CONTRACT NO. 24-1888-D