

NOTES REGARDING MI 100:

- 1) BUILD MI # 100 OVER & CONNECT TO EXISTING 8" SEWER. SEE STANDARD DETAIL G5.14.
- 2) SET MI # 100 1'-6" ABOVE EXISTING GROUND. SEE STANDARD DETAIL G5.41.

SEE SHEET 2 OF 2 FOR PROFILE OF 8" W & 8" S

INVERT OF SEWER HOUSE CONNECTIONS AT PROPERTY LINE

STATION	LOT	INVERT
MI# 103 to MI# 104		
0+00 DUC	A	368.20
MI# 104 to MI# 105		
0+20 DUC	2	368.20
0+41 DUC	3	368.20
MI# 105 to MI# 107		
0+24 DUC	6	368.40
0+40 DUC	5	367.20
0+41 DUC	7	368.20
MI# 107 to MI# 108		
0+23 DUC	10	368.60
0+23 DUC	11	368.10
0+23 DUC	12	368.80
0+23 DUC	13	368.40
MI# 107 to MI# 108		
0+12	7	368.80
0+12	8	368.80
MI# 108 to MI# 109		
0+14	9	362.30
MI# 109 to MI# 110		
1+09	17	366.00
2+03	18	366.74
2+07	17	367.42
2+17	13	367.18
2+21	16	367.80
0+11	15	367.97
0+11	14	310.40

MANHOLE TABULATION

NO	RD. STATION	DISTANCE	RIM	SLOPE
100			351.1	*
101			349.5	*
102			353.0	*
103			361.5	*
104			376.3	*
105	2+68	8' LEFT	377.72	+2.00%
106	3+03	10' LEFT	378.81	+2.00%
107	3+24	21' LEFT	378.19	-2.80%
108	3+04	3' LEFT	374.83	-2.80%
109	4+01	3' LEFT	377.23	-2.80%
110	IN CURVE 50'		361.93	

QUANTITIES

ITEM	EST'D	AS-BUILT	SUPPLIER
8" SEWER	1,147 LF		
4" SEWER	408 LF		
MANHOLES	11 EA.		
8" WATER	879 LF		
6" WATER	145 LF		
FIRE HYDRANTS	3 EA.		
1" W.H.C.	74 LF		
3/4" W.H.C.	458 LF		
8" VALVES	1 EA.		
8" REDUCERS	1 EA.		
16" X 8" TAPPING SLEEVE VALVE	1 EA.		
8" SEWER, D.I.P.	103 LF		
6" SEWER	45 LF		

SEDIMENT CONTROL MEASURES FOR THIS CONTRACT WILL BE IMPLEMENTED IN ACCORDANCE WITH SECTION 219 OF THE HOWARD COUNTY DESIGN MANUAL AND STANDARDS AND SPECIFICATIONS FOR SOIL EROSION AND SEDIMENT CONTROL IN DEVELOPING AREAS AND ALSO AS SHOWN ON THE GRADING AND SEDIMENT CONTROL PLAN F 89-226

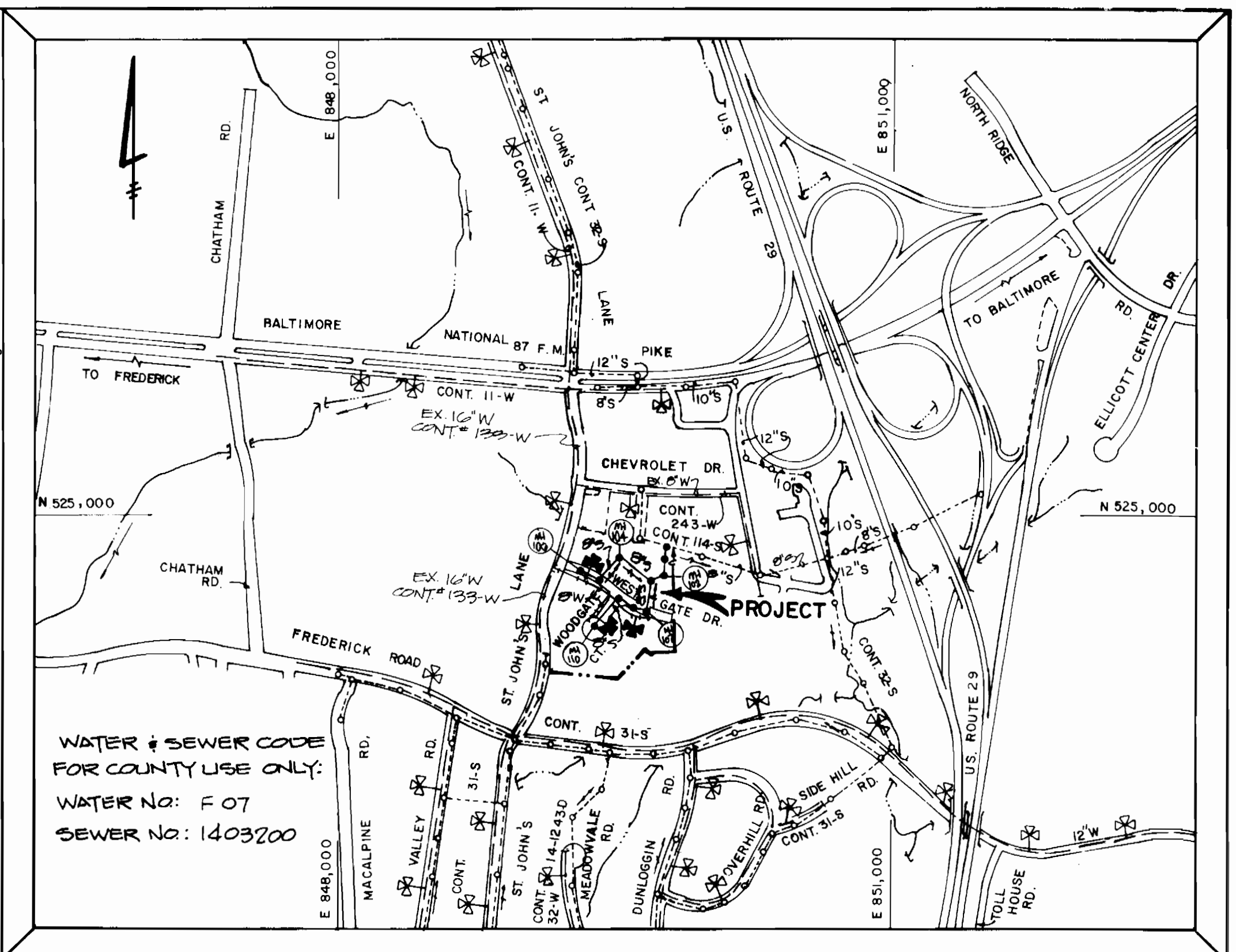
REVIEWED FOR HOWARD COUNTY SOIL CONSERVATION DISTRICT AND MEETS TECHNICAL REQUIREMENTS.

J. Helms 8-31-89
US SOIL CONSERVATION SERVICE DATE

THIS DEVELOPMENT PLAN IS APPROVED FOR EROSION AND SEDIMENT CONTROL BY HOWARD COUNTY SOIL CONSERVATION DISTRICT.

APPROVED:
Terrell A. Fisher 8/30/89
HOWARD COUNTY SOIL CONSERVATION DISTRICT DATE

PLAN REFERENCE NUMBERS:
P. 89-220
F. 89-226

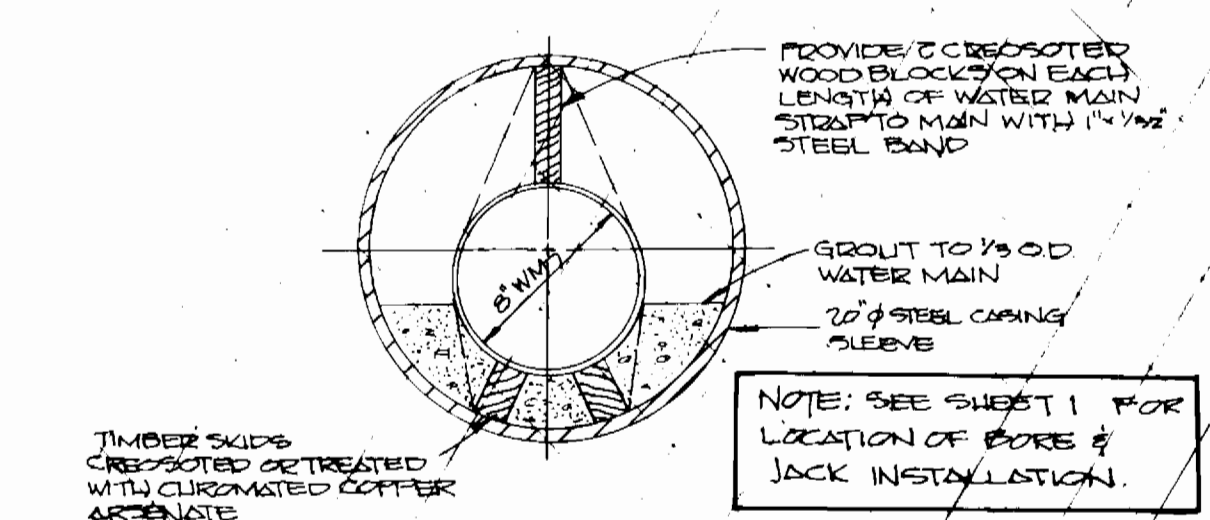
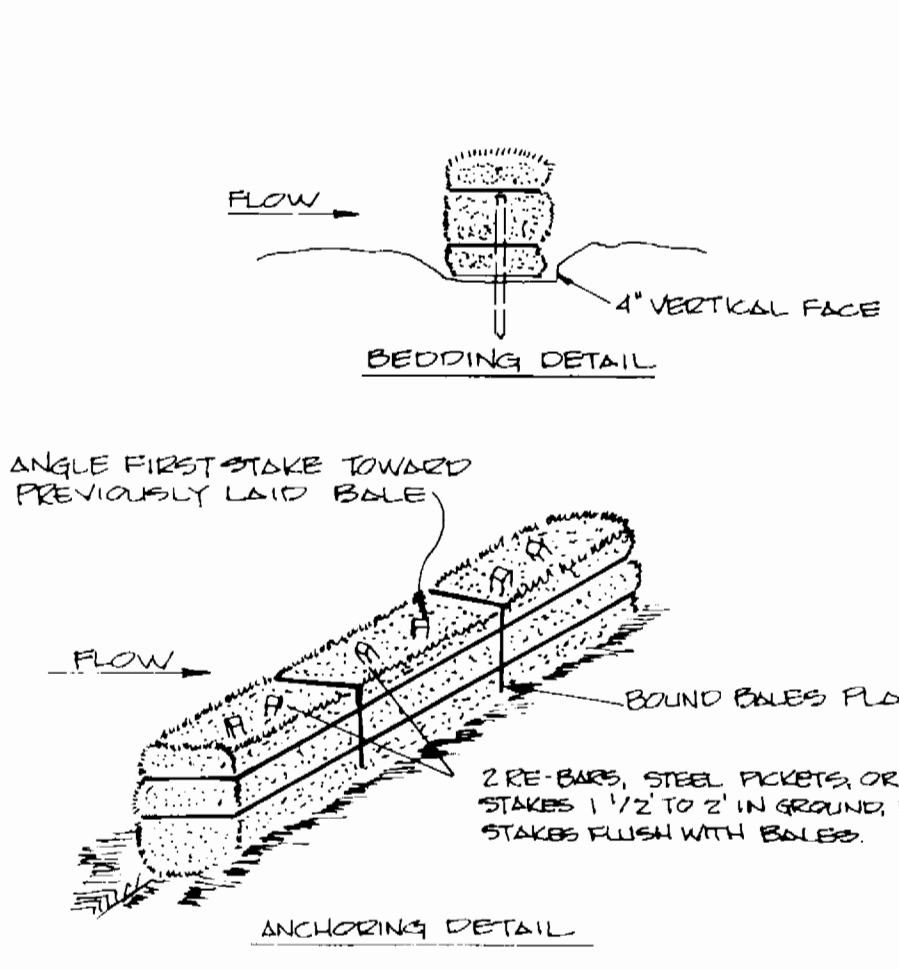


WATER & SEWER CODE FOR COUNTY USE ONLY:
WATER NO: F 07
SEWER NO: 1403200

VICINITY MAP
SCALE: 1" = 600'

- GENERAL NOTES**
1. APPROXIMATE LOCATION OF EXISTING MAINS ARE SHOWN. THE CONTRACTOR SHALL TAKE ALL NECESSARY PRECAUTIONS TO PROTECT EXISTING MAINS AND SERVICES AND MAINTAIN UNINTERRUPTED SUPPLY. ANY DAMAGE INCURRED SHALL BE REPAIRED IMMEDIATELY TO THE SATISFACTION OF THE ENGINEER AT THE CONTRACTOR'S EXPENSE.
 2. ALL HORIZONTAL CONTROLS ARE BASED ON MARYLAND STATE COORDINATES.
 3. ALL VERTICAL CONTROLS ARE BASED ON U.S.G.S. DATUM.
 4. ALL PIPE ELEVATIONS SHOWN ARE INVERT ELEVATIONS.
 5. CLEAR ALL UTILITIES BY A MINIMUM OF 6"
 6. FOR DETAILS NOT SHOWN ON THE DRAWINGS, AND FOR MATERIALS AND CONSTRUCTION METHODS, USE HOWARD COUNTY DESIGN MANUAL, VOLUME IV, STANDARD SPECIFICATIONS AND DETAILS FOR CONSTRUCTION. THE CONTRACTOR SHALL HAVE A COPY OF VOLUME IV ON THE JOB.
 7. WHERE TEST PITS HAVE BEEN MADE ON EXISTING UTILITIES, THEY ARE NOTED BY THE SYMBOL [] AT THE LOCATION OF THE TEST PIT. A NOTE OR NOTES CONTAINING THE RESULTS OF THE TEST PIT OR PITS IS INCLUDED ON THE DRAWINGS. EXISTING UTILITIES IN THE VICINITY OF THE PROPOSED WORK FOR WHICH TEST PITS HAVE NOT BEEN DUG SHALL BE VERIFIED BY THE CONTRACTOR TO HIS OWN SATISFACTION. ANY DAMAGE TO EXISTING FACILITIES DUE TO THE CONTRACTOR'S NEGLIGENCE SHALL BE REPAIRED AT THE CONTRACTOR'S EXPENSE.
 8. CONTRACTOR SHALL NOTIFY THE FOLLOWING UTILITIES OR AGENCIES AT LEAST FIVE WORKING DAYS BEFORE STARTING WORK SHOWN ON THESE PLANS:
C & P TELEPHONE COMPANY - 1-800-257-7777
STATE HIGHWAY ADMINISTRATION - 531-5533
BALTIMORE GAS & ELECTRIC CO. - CONTRACTOR SERVICES 850-4620
BALTIMORE GAS & ELECTRIC CO. - UNDER GROUND DAMAGE CONTROL-859-9004
BALTIMORE GAS & ELECTRIC CO. - TROUBLE SHOOTING - 298-9001
MISS UTILITY - 1-559-0100
COLONIAL PIPELINE CO. - 795-1390
BUREAU OF UTILITIES, HOWARD COUNTY DEPARTMENT OF PUBLIC WORKS - 992-2366
 9. TREES AND SHRUBS ARE TO BE PROTECTED FROM DAMAGE TO MAXIMUM EXTENT. TREES AND SHRUBS LOCATED WITHIN THE CONSTRUCTION STRIP ARE NOT TO BE REMOVED OR DAMAGED BY THE CONTRACTOR.
 10. CONTRACTOR SHALL REMOVE TREE, STUMPS AND ROOTS ALONG THE LINE OF EXCAVATION. PAYMENT FOR SUCH REMOVAL SHALL BE INCLUDED IN THE UNIT PRICE BID FOR CONSTRUCTION OF THE MAIN.
 11. ALL SEWER MAINS SHALL BE C.S.P.X., R.C.S.P., V.C.P.X., A.C.P. CLASS 2400 OR P.V.C. UNLESS OTHERWISE NOTED.
 12. THE CONTRACTOR SHALL PROVIDE A JOINT IN ALL SEWER MAINS WITHIN 2'-0" OF EXTERIOR MANHOLE WALL.
 13. ALL MANHOLES SHALL BE 4'-0" INSIDE DIAMETER UNLESS OTHERWISE NOTED.
 14. T.B. DENOTES TEST BORING.
 15. MANHOLES SHOWN WITH 12" AND 16" WALLS ARE FOR BRICK MANHOLES ONLY.
 16. MANHOLES DESIGNATED W.T. IN PLAN AND PROFILE SHALL HAVE WATER TIGHT FRAME AND COVERS, STANDARD DETAIL G 5.5.2. WHERE WATER TIGHT MANHOLE FRAME AND COVER IS USED, SET TOP OF FRAME 1'-6" ABOVE FINISHED GRADE UNLESS OTHERWISE NOTED ON THE DRAWINGS.
 17. HOUSE(S) WITH THE SYMBOL "C.N.S." INDICATES THAT THE CELLAR CAN NOT BE SERVED.
 18. ALL WATER MAINS TO BE D.I.P., CLASS 52 UNLESS OTHERWISE NOTED.
 19. TOPS OF ALL WATER MAINS TO HAVE A MINIMUM OF 3'-1/2" COVER UNLESS OTHERWISE NOTED.
 20. VALVES ADJACENT TO TEES SHALL BE STRAPPED TO TEES.
 21. ALL FITTINGS SHALL BE BUTTRESSED OR ANCHORED WITH CONCRETE IN ACCORDANCE WITH THE STANDARD DETAILS UNLESS OTHERWISE PROVIDED FOR ON THE DRAWINGS.
 22. FIRE HYDRANTS SHALL BE SET TO THE BURY LINE ELEVATIONS SHOWN ON THE DRAWINGS. ALL FIRE HYDRANTS SHALL BE STRAPPED AND BUTTRESSED WITH CONCRETE IN ACCORDANCE WITH STANDARD DETAILS. SOIL AROUND THE FIRE HYDRANT SHALL BE COMPACTED IN ACCORDANCE WITH SECTION 1003 OF THE STANDARD SPECIFICATIONS.
 23. THE CONTRACTOR SHALL NOT OPERATE ANY WATER MAIN VALVES ON THE EXISTING WATER SYSTEM.
 24. ALL WATER HOUSE CONNECTIONS SHALL BE FOR INSIDE METER SETTING, UNLESS OTHERWISE NOTED ON THE PLANS OR IN THE SPECIFICATIONS.
 25. ALL D.I.P. FITTINGS SHALL BE IN ACCORDANCE WITH AWWA SPECIFICATION C-153: DUCTILE IRON COMPACT FITTINGS, 3-INCH THROUGH 12-INCH FOR WATER & OTHER LIQUIDS.

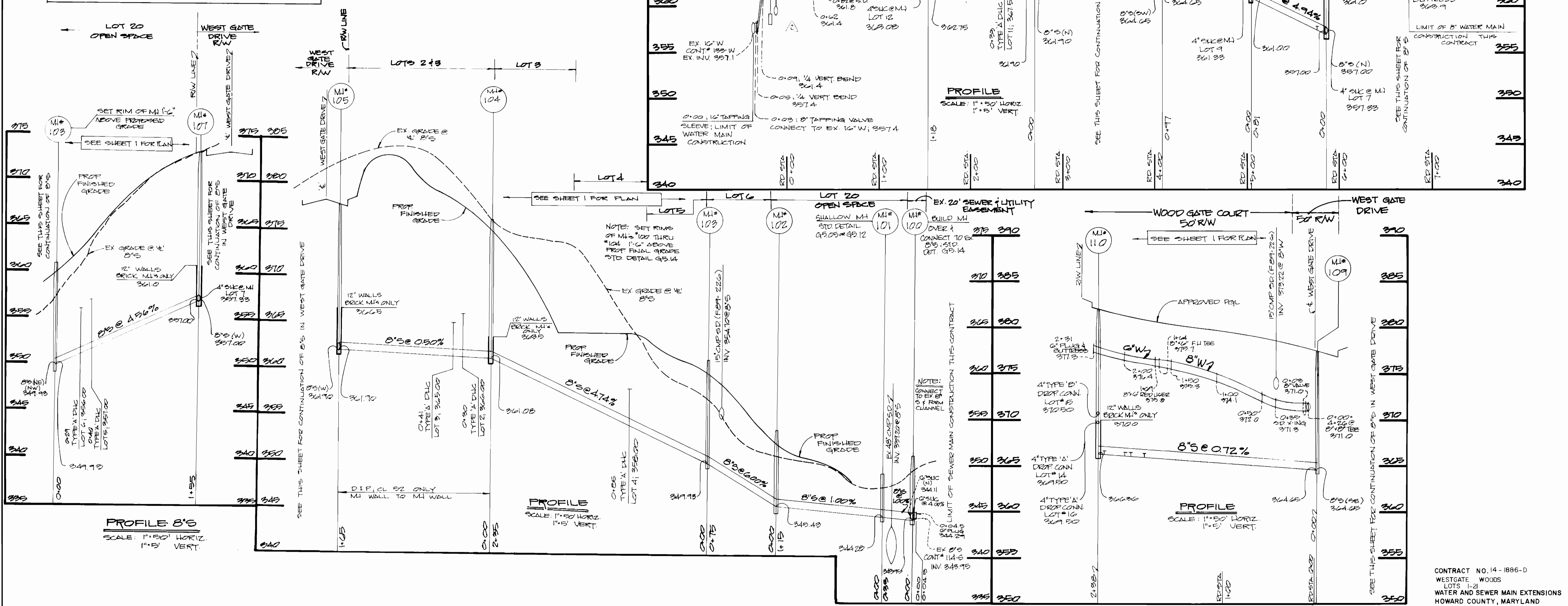
DEPARTMENT OF PUBLIC WORKS HOWARD COUNTY, MARYLAND <i>James H. ...</i> 9-1-89 DIRECTOR OF PUBLIC WORKS DATE <i>Rodney ...</i> 8-28-89 CHIEF, BUREAU OF UTILITIES DATE		FISHER, COLLINS, AND CARTER, INC. CONSULTING ENGINEERS AND LAND SURVEYORS 8388 COURT AVENUE ELLICOTT CITY, MARYLAND 21043 <i>Terrell A. Fisher</i> TERRELL A. FISHER		DES. M.M. & P.W.K. DRN. M.M. & S.B. CHK. P.W.K. DATE: 8/20/89		PLAN WATER AND SEWER MAINS 600' SCALE MAP NO. 24 BLOCK NO. 15		WEST GATE WOODS LOTS 1-21 CONTRACT NO. 14-1886 D SECOND ELECTION DISTRICT HOWARD COUNTY, MARYLAND SCALE AS SHOWN SHEET 1 OF 2	
---	--	--	--	--	--	--	--	--	--



- BALES SHALL BE PLACED AT THE TOE OF A SLOPE OR ON THE CONTOUR AND IN A ROW WITH ENDS TIGHTLY ADJUTING THE ADJACENT BALES
- EACH BALE SHALL BE EMBEDDED IN THE SOIL A MINIMUM OF 4 INCHES, AND PLACED SO THE BINDINGS ARE HORIZONTAL
- BALES SHALL BE SECURELY ANCHORED IN PLACE BY EITHER TWO STAKES OR RE-BARS DRIVEN THROUGH THE BALE THE FIRST STAKE IN EACH BALE SHALL BE DRIVEN TOWARD THE PREVIOUSLY LAID BALE AT AN ANGLE TO FORCE THE BALES TOGETHER STAKES SHALL BE DRIVEN FLUSH WITH THE BALE
- INSPECTION SHALL BE FREQUENT AND REPAIR & REPLACEMENT SHALL BE MADE PROMPTLY AS NEEDED
- BALES SHALL BE REMOVED WHEN THEY HAVE SERVED THEIR USEFULNESS SO AS NOT TO BLOCK OR IMPED EROSION FLOW OR DRAINAGE

STRAW BALE DIKE

NOTE: SEE SHEET 1 FOR LOCATION OF STRAW BALE DIKES



DEPARTMENT OF PUBLIC WORKS
HOWARD COUNTY, MARYLAND

9/1/89
DIRECTOR OF PUBLIC WORKS

8/28/89
CHIEF, BUREAU OF UTILITIES

FISHER, COLLINS, AND CARTER, INC.
CONSULTING ENGINEERS AND LAND SURVEYORS
8388 COURT AVENUE
ELLCOTT CITY, MARYLAND 21043

8/31/89
CHIEF, LAND DEVELOPMENT DIVISION

DES: MM & PWK	DATE: 8/20/89	BY: NO.
DRN: MM		
CHK: PWK		
DATE: 8/20/89		

PROFILES	
WATER AND SEWER MAINS	
DATE: 8/20/89	REVISION
DATE: 600' SCALE MAP NO. 24	BLOCK NO. 1B

WEST GATE WOODS
LOTS 1-21
CONTRACT NO. 14-1886-D
SECOND ELECTION DISTRICT
HOWARD COUNTY, MARYLAND

SCALE AS SHOWN
SHEET 2 OF 2

CONTRACT NO. 14-1886-D
WESTGATE WOODS
LOTS 1-21
WATER AND SEWER MAIN EXTENSIONS
HOWARD COUNTY, MARYLAND