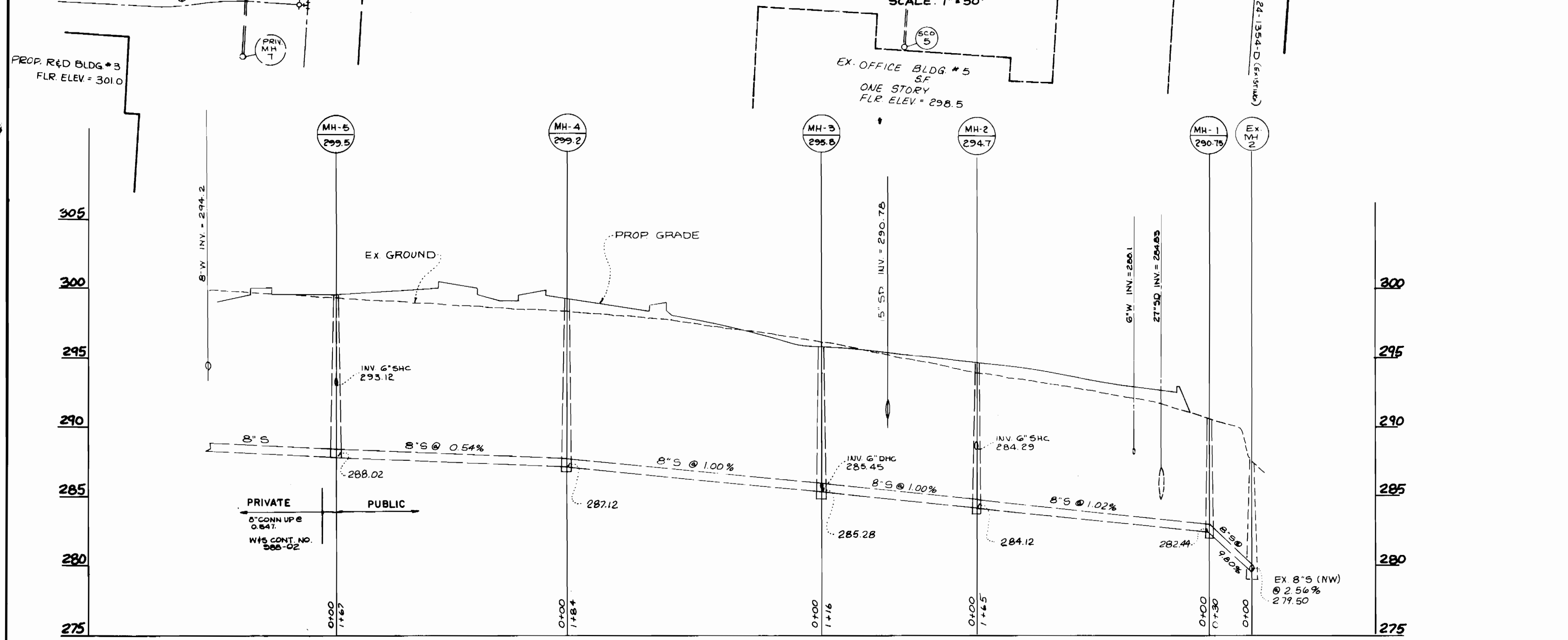
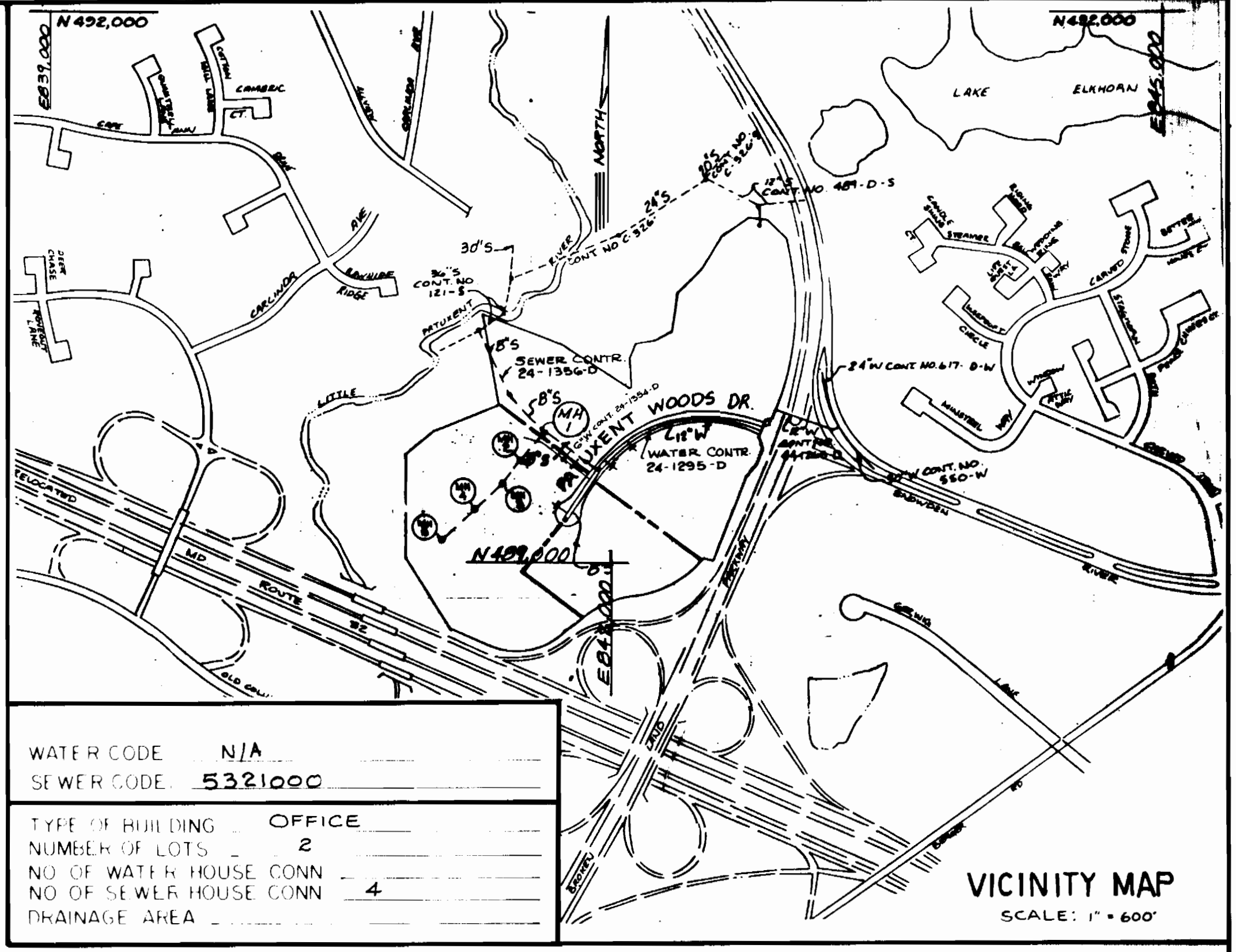
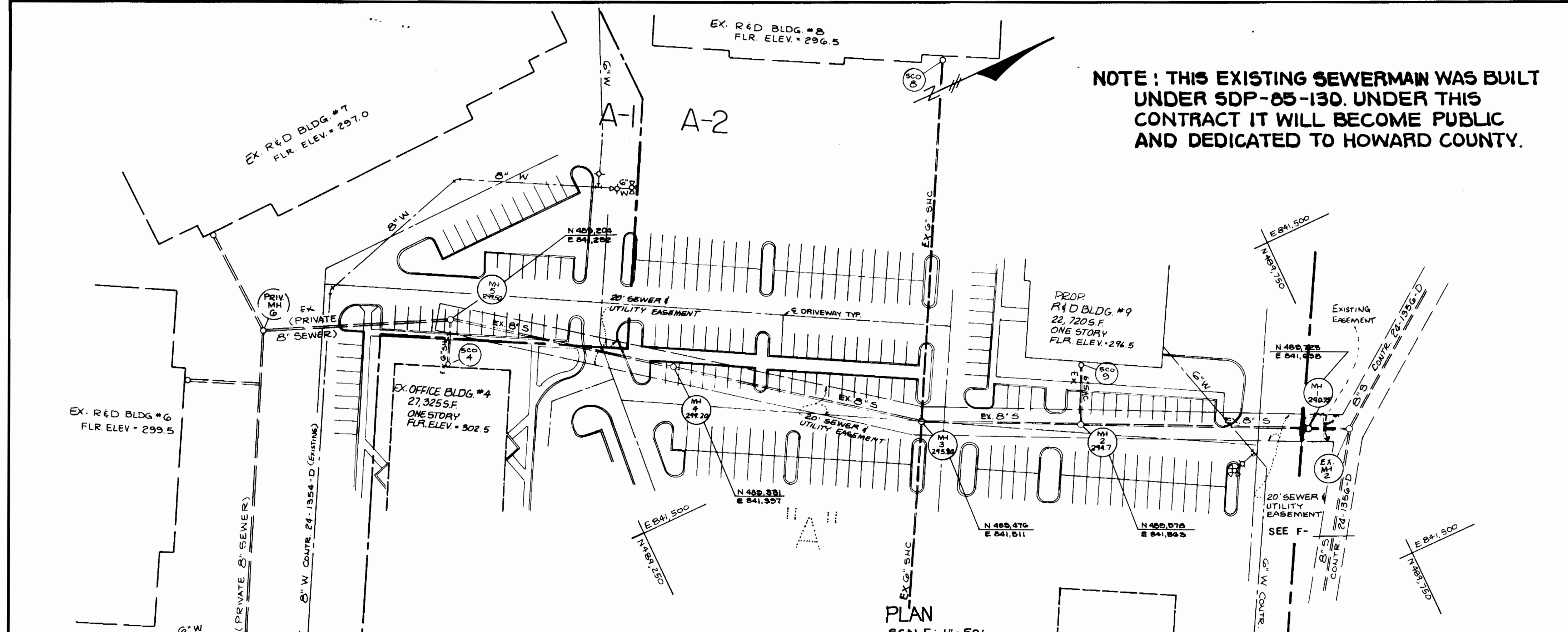


NOTE: THIS EXISTING SEWERMAN WAS BUILT UNDER SDP-85-130. UNDER THIS CONTRACT IT WILL BECOME PUBLIC AND DEDICATED TO HOWARD COUNTY.



13. All sewer mains shall be C S P X, R C S P, V C P X, A C P Class 2400 or F V C unless otherwise noted.
14. The contractor shall provide a joint in all sewer mains within 2'-0" of exterior manhole wall.
15. All manholes shall be 4'-0" inside diameter unless otherwise noted.
16. Manholes shown with 12" and 16" walls are brick manholes only.
17. Manholes designated W T in plan and profile shall have watertight frame and covers, Standard Detail G5 52.
18. Where watertight manhole frame and cover is used, set top of frame 1'-6" above finished grade, Standard Detail GF 41.
19. Houses with the symbol "C N S" indicates that cellar cannot be served.
20. Houses with the symbol "C N S" indicates that cellar cannot be served.

SEDIMENT CONTROL NOTES

1. For sediment control for this contract, see the approved road construction plans.
2. Materials from trench excavation to be placed on uphill side of trench.
3. Contractor to backfill, compact, and stabilize immediately after installation of pipe. No trenches will be left open at the end of each day, except that portion where work has stopped.
4. Any sediment control facilities encountered during pipe construction to be returned to original condition immediately upon completion of that portion of work.
5. Sediment control measures for this contract will be implemented in accordance with Section 219 of the Howard County Standard Specifications and as per road construction plans.

REVIEWED FOR HOWARD SOIL CONSERVATION DISTRICT AND MEETS TECHNICAL REQUIREMENTS
 James M. Helm, 12/6/88, U.S. SOIL CONSERVATION SERVICE
 DEPARTMENT OF PUBLIC WORKS, HOWARD COUNTY, MARYLAND
 James M. Helm, 12/6/88, Robert Reimer, 11-29-88, CHIEF, BUREAU OF UTILITIES

THIS DEVELOPMENT PLAN IS APPROVED FOR SOIL EROSION & SEDIMENT CONTROL BY THE HOWARD SOIL CONSERVATION DISTRICT
 Stephen L. Helm, 12-5-88, HOWARD S.C.D.
KIDDE CONSULTANTS INC.
 ENGINEERS, PLANNERS & SURVEYORS
 1100 WEST STREET / SUITE 100
 LAUREL, MD 20707
 (301) 792-8086 (301) 953-1821
 JOHN E.C. PATMORE MD. PE. No. 8978

LOCATION MAP
 8" SANITARY SEWER
 PLAN AND PROFILE
 CONTRACT NO. 20-1862-D
 SCALE AS SHOWN
 SHEET 1 OF 1

(ACCEPTANCE OF 8 INCH PRIVATE SEWER) (AS BUILT)
VILLAGE OF OWEN BROWN
 SECTION 6, AREA I, PARCEL/LOTS A-1 & A-2
 TAX MAP 42, PARCEL 18
 6TH ELECTION DISTRICT
 HOWARD COUNTY, MARYLAND