

QUANTITIES

ITEM	EST'D	AS BUILT	SUPPLIER
MANHOLES	3	3	Atlantic Conc. Prod. Inc.
8" SEWER	314 L.F.	314'	Belair Rd. Supply
6" SHC	276 L.F.	266'	J-M Manf. Corp.
6" WATER	67 L.F.	67'	Belair Rd. Supply
6" WATER	308 L.F.	315'	Griffin Pipe Prod.
4" WATER	10 L.F.		
3" WATER	15 L.F.	15'	
8" x 8" TAPPING VALVE	1	1	Belair Rd. Supply
8" x 6" F.H. TEE	1	1	Belair Rd. Supply
F.H. W/O VALVE	1	1	Griffin Pipe Prod.
8" x 6" REDUCER	1	1	Belair Rd. Supply
6" x 4" REDUCER	1	1	Griffin Pipe Prod.
4" x 3" REDUCER	1		
3" VALVE	1	1	Belair Rd. Supply
5" BLOWOFF	1	1	Muller Co.
1" W/C	160 L.F.	151'	Belair Rd. Supply
3/4" W/C	186 L.F.	184'	Howell Metal Co.

MANHOLE TABULATION

NO.	ROAD STATION	OFFSET	RIM ELEV.	SLOPE
1	0+22 AMBRA COURT	T RIGHT	403.13	4.00%
2	1+65 AMBRA COURT	3' RIGHT	407.46	0.60%
3	3+36.40 AMBRA COURT	T RIGHT	409.85	5.70%

INVERT OF SEWER HOUSE CONNECTIONS AT PROPERTY LINE

STATION	LOT NO.	INVERT ELEV.
EX MANHOLE #915 TO EX MANHOLE #916		
0+48	1	392.95
0+48	2	392.95
MANHOLE 1 TO MANHOLE 2		
0+46	14	392.86
MANHOLE 2 TO MANHOLE 3		
0+60	12	394.08
0+60	13	394.08
0+64	3	394.32
0+64	4	394.32
MANHOLE 3		
"	5	395.59
"	6	395.59
"	7	395.53
"	8	395.53
"	10	395.37
"	11	395.37

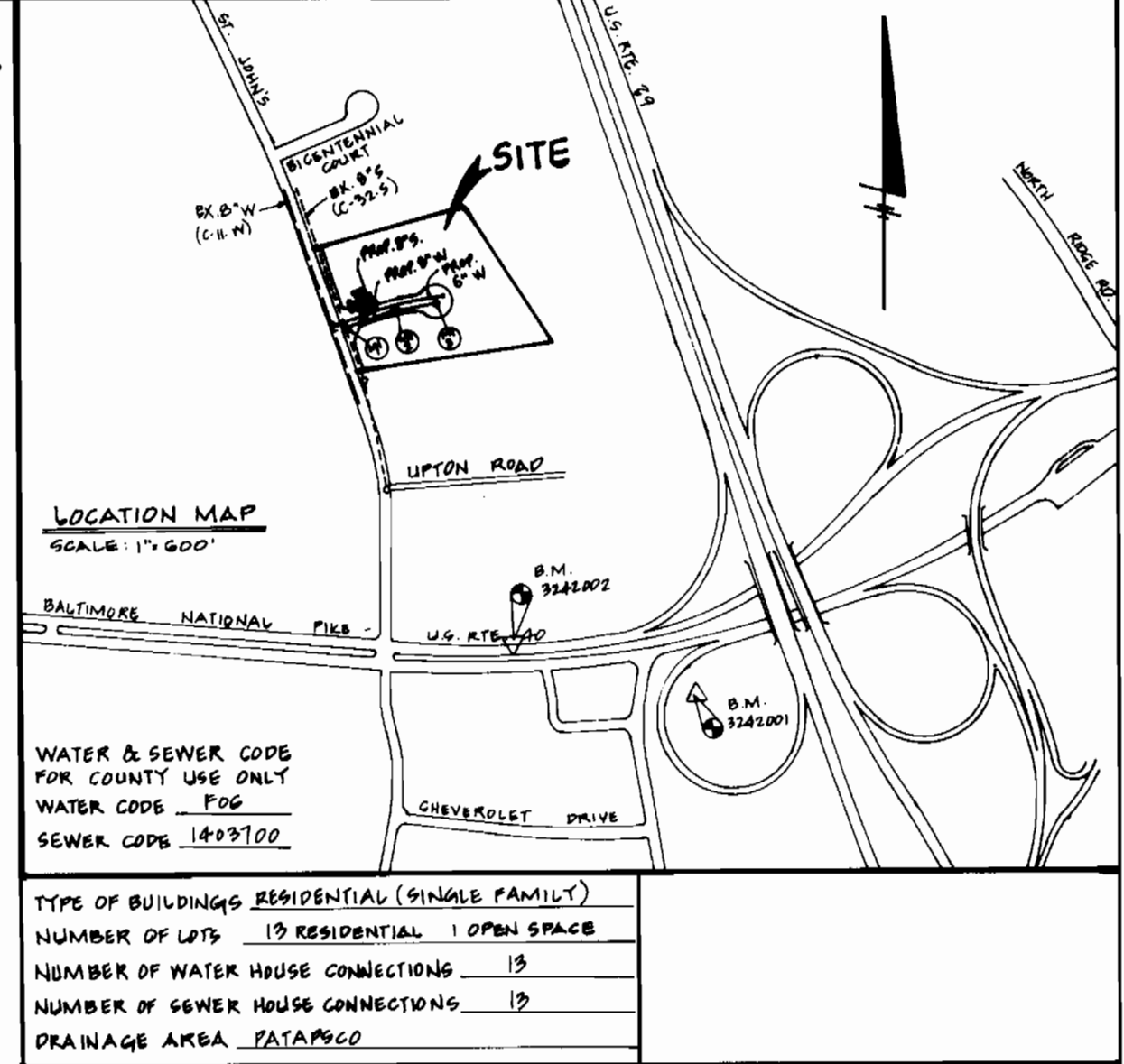
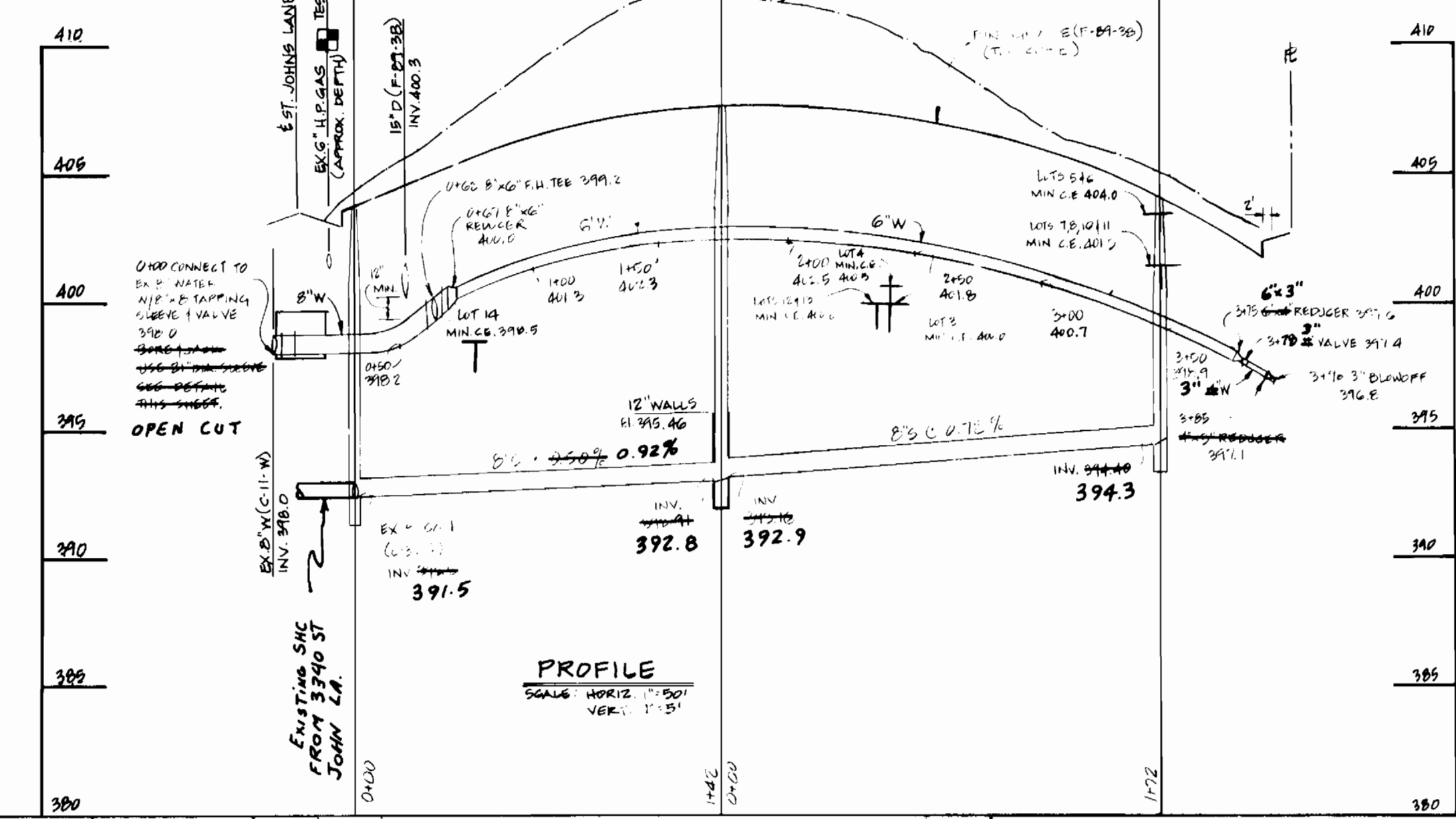
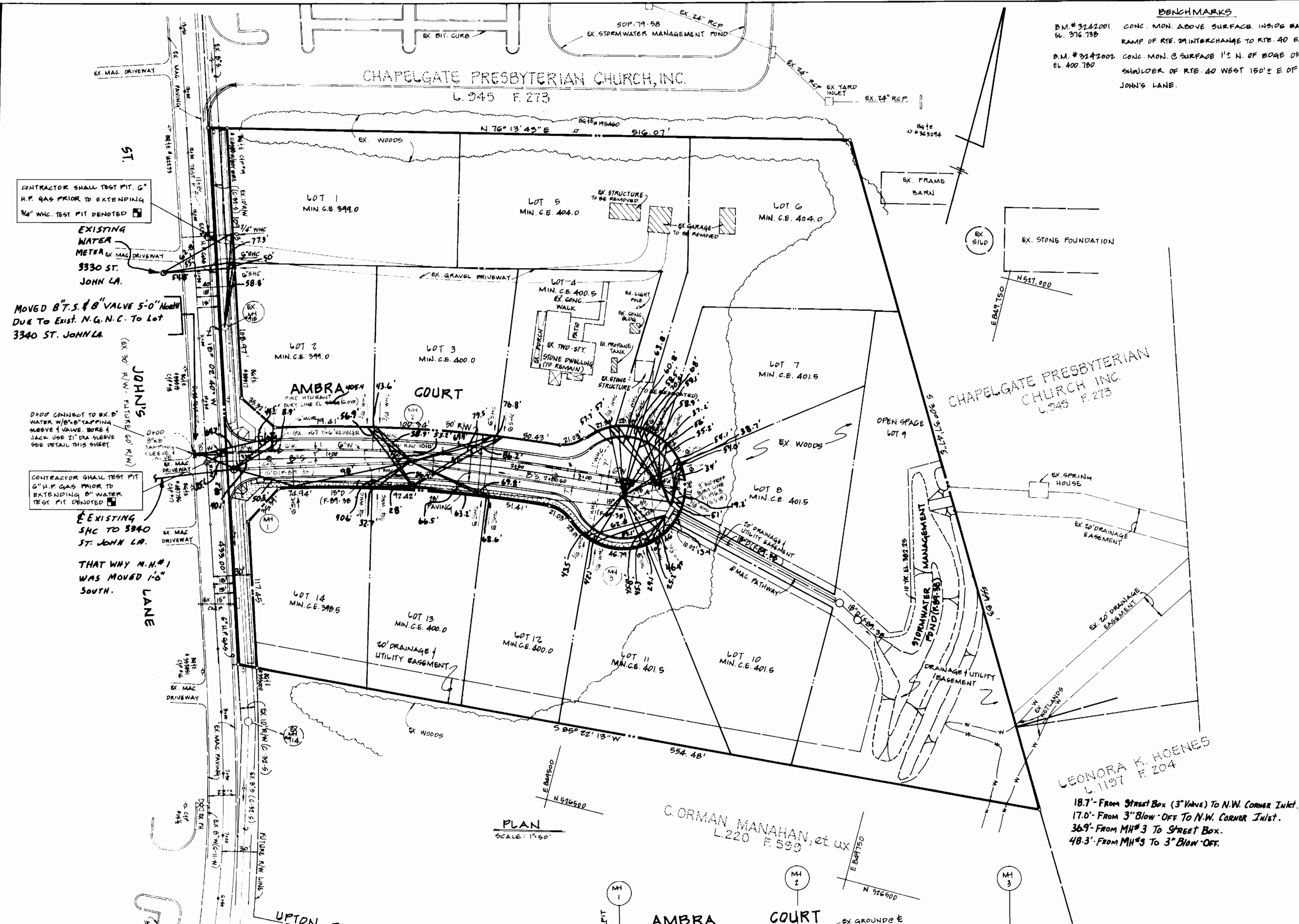
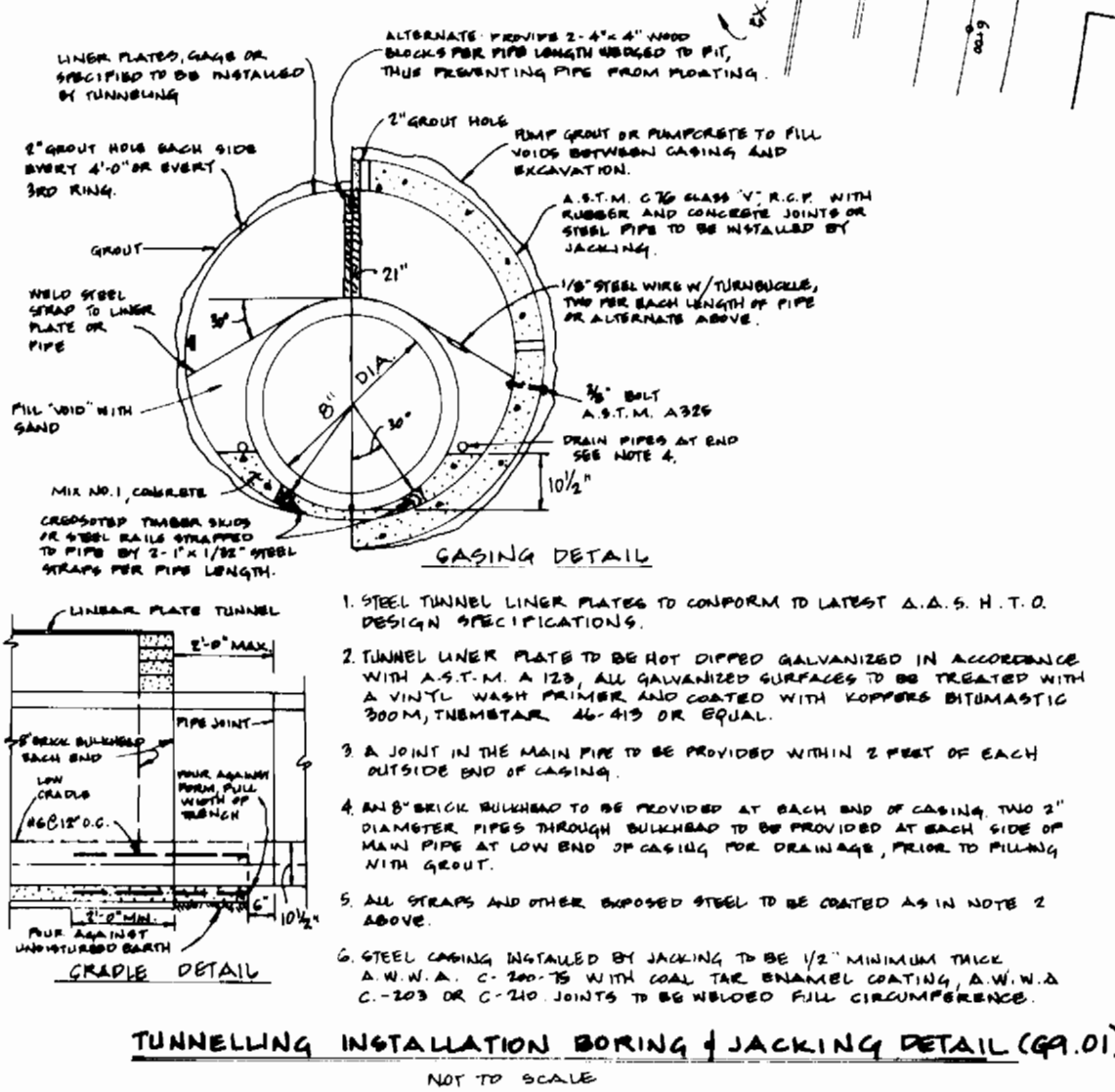
SEDIMENT CONTROL MEASURES FOR THIS CONTRACT WILL BE IMPLEMENTED IN ACCORDANCE WITH SECTION 15 OF THE HOWARD COUNTY DESIGN MANUAL AND STANDARDS AND SPECIFICATIONS FOR SOIL EROSION AND SEDIMENT CONTROL IN DEVELOPING AREAS AND ALSO AS SHOWN ON THE GRADING AND SEDIMENT CONTROL PLAN FOR 98.

THIS DEVELOPMENT PLAN IS APPROVED FOR SOIL EROSION AND SEDIMENT CONTROL BY THE HOWARD SOIL CONSERVATION DISTRICT.

Stephen L. G. / 11/3/87
HOWARD S.C.D. DATE

REVIEWED FOR HOWARD S.C.D. AND MEETS TECHNICAL REQUIREMENTS.

J. Helms / 1/12/89
U.S. SOIL CONSERVATION SERVICE DATE



- ### GENERAL NOTES
1. APPROXIMATE LOCATION OF EXISTING MAINS ARE SHOWN. THE CONTRACTOR SHALL TAKE ALL NECESSARY PRECAUTIONS TO PROTECT EXISTING MAINS AND SERVICES AND MAINTAIN UNINTERRUPTED SUPPLY. ANY DAMAGE INCURRED SHALL BE REPAIRED IMMEDIATELY TO THE SATISFACTION OF THE ENGINEER, AT THE CONTRACTOR'S EXPENSE.
 2. ALL HORIZONTAL CONTROLS ARE BASED ON MARYLAND STATE COORDINATES.
 3. ALL VERTICAL CONTROLS ARE BASED ON U.S.G.S. DATUM.
 4. ALL PIPE ELEVATIONS SHOWN ARE INVERT ELEVATIONS.
 5. CLEAR ALL UTILITIES BY A MINIMUM OF 6" CLEAR ALL POLES BY 2'-0" MINIMUM OR TUNNEL AS REQUIRED. ANY COST INCURRED TO THE CONTRACTOR FOR TUNNELING OR BRACING AT POLES SHALL BE INCLUDED IN UNIT PRICES BID FOR CONSTRUCTION OF THE MAIN.
 6. FOR DETAILS NOT SHOWN ON THE DRAWINGS USE HOWARD COUNTY STANDARD DETAILS.
 7. FOR MATERIALS AND CONSTRUCTION METHODS USE HOWARD COUNTY STANDARD SPECIFICATIONS.
 8. CONTRACTOR SHALL LOCATE EXISTING UTILITIES A MINIMUM OF TWO (2) WEEKS IN ADVANCE OF CONSTRUCTION OPERATIONS IN THE VICINITY OF PROPOSED UTILITIES AT HIS OWN EXPENSE.
 9. CONTRACTOR SHALL NOTIFY THE FOLLOWING UTILITIES OR AGENCIES AT LEAST FIVE (5) WORKING DAYS BEFORE STARTING WORK SHOWN ON THESE PLANS: (TEST PIT DENOTED:)
STATE HIGHWAY ADMINISTRATION 591-5933
BALTIMORE GAS AND ELECTRIC COMPANY - UNDERGROUND ELECTRIC DISTRIBUTION CUSTOMER SERVICE 685-0123
BALTIMORE GAS AND ELECTRIC COMPANY - UNDERGROUND GAS DISTRIBUTION CUSTOMER SERVICE 685-0123
ENGINEERING - "DAMAGE CONTROL" 234-9611
"MISS UTILITY" 1-559-0100
CHESAPEAKE & POTOMAC (C.P.) TELEPHONE COMPANY 725-9976
AMERICAN TELEPHONE AND TELEGRAPH - CABLE LOCATION DIVISION 395-3933
COLONIAL PIPELINE COMPANY 795-1390
BUREAU OF UTILITIES HOWARD COUNTY 992-2366
 10. TREES ARE TO BE PROTECTED FROM DAMAGE TO MAXIMUM EXTENT. TREES LOCATED WITHIN THE CONSTRUCTION STRIP ARE NOT TO BE REMOVED OR DAMAGED BY THE CONTRACTOR.
 11. CONTRACTOR SHALL REMOVE TREES, STUMPS AND ROOTS ALONG LINE OF EXCAVATION AS DIRECTED BY THE ENGINEER. PAYMENT FOR SUCH REMOVAL SHALL BE INCLUDED IN THE UNIT PRICE BID FOR CONSTRUCTION OF THE MAIN.
 12. PLACE REGULATION "MEN WORKING" AND WARNING SIGNS AS REQUIRED TO COMPLY WITH MARYLAND STATE HIGHWAY ADMINISTRATION MANUAL OF TRAFFIC CONTROL FOR HIGHWAY CONSTRUCTION AND MAINTENANCE.
 13. ALL WATER MAINS TO BE D.I.P. CLASS 52 ONLY.
 14. TOP OF ALL WATER MAINS TO HAVE A MINIMUM OF 3'-1/2" COVER UNLESS OTHERWISE NOTED.
 15. VALVES ADJACENT TO TEE'S SHALL BE STRAPPED TO TEE'S.
 16. BLOCK ALL FITTINGS WITH CONCRETE.
 17. ALL BURY LINE ELEVATIONS ON FIRE HYDRANTS SHALL BE SET TO THE ELEVATIONS SHOWN ON THE DRAWINGS. ALL FIRE HYDRANTS SHALL BE STRAPPED AND BUTRESSED WITH CONCRETE IN ACCORDANCE WITH SECTIONS 10.03 AND 10.05 OF THE STANDARD SPECIFICATIONS.
 18. ALL WATER HOUSE CONNECTIONS SHALL BE FOR INSIDE METER SETTING.
 19. THE CONTRACTOR SHALL NOT OPERATE ANY WATER MAIN VALVES ON THE EXISTING SYSTEM.
 20. ALL SEWER MAINS SHALL BE C.S.P., R.C.S.P., V.C.P.X., A.C.P. CLASS 2400 OR PVC UNLESS OTHERWISE NOTED.
 21. THE CONTRACTOR SHALL PROVIDE A JOINT IN ALL SEWER MAINS WITH 2'-0" OF EXTERIOR MANHOLE WALL.
 22. ALL MANHOLES SHALL BE 4'-0" INSIDE DIAMETER, UNLESS OTHERWISE NOTED.
 23. FORCE MAINS SHALL BE D.I.P. ONLY.
 24. MANHOLES SHOWN WITH 12" AND 18" WALLS ARE BRICK MANHOLES ONLY.
 25. MANHOLES DESIGNATED W.T. IN PLAN AND PROFILE SHALL HAVE WATERTIGHT FRAME AND COVERS, STANDARD DETAIL 9.5.2 WHERE WATERTIGHT MANHOLE FRAME AND COVER IS USED, SET TOP OF FRAME 1'-6" ABOVE FINISHED GRADE, STANDARD DETAIL 9.5.41.
 26. HOUSE (S) WITH THE SYMBOL "C.N.S." INDICATES THAT CGLUBAR CAN NOT BE SERVED.
 27. ALL D.I.P. FITTINGS SHALL BE IN ACCORDANCE WITH AWWA SPECIFICATION C-153 DUCTILE IRON COMPACT FITTINGS, 3" NCH THROUGH 12" INCH WITH OTHER LIQUIDS.

<p>DEPARTMENT OF PUBLIC WORKS HOWARD COUNTY, MARYLAND</p> <p><i>Robert J. Berry</i> DIRECTOR OF PUBLIC WORKS DATE: 1-10-89</p> <p><i>Robert J. Berry</i> CHIEF, BUREAU OF UTILITIES DATE: 1-10-89</p>	<p>DEWBERRY & DAVIS 3300 N. RIDGE ROAD SUITE 100 ELLCOTT CITY, MARYLAND 21043 (301) 461-7478 (301) 621-4470 MBTR</p> <p><i>1-17-89</i> DATE</p> <p><i>1/17/89</i> DATE</p>	<p>DES: B.D.B. DRN: J.A.U. CHK: B.D.B. DATE: 7/29/88</p> <p>BY NO REVISION</p> <p>2 PER DPW COMMENTS DATED 11/4/88 1 PER DPW COMMENTS DATED 7/26/88</p> <p>8/19/88 8/10/88</p>	<p style="text-align: center;">PLAN & PROFILE</p> <p style="text-align: center;">WATER & SEWER MAINS</p> <p style="text-align: center;">COVE WOOD SECTION ONE</p> <p>TAX MAP NO. 24 PARCELS 42 AND 43 2ND ELECTION DISTRICT HOWARD COUNTY, MARYLAND</p> <p>CONTRACT NO. 14-1058-D FILE # W6001-EC</p> <p>SCALE AS SHOWN SHEET 1 OF 1</p>
--	---	--	---