

GENERAL NOTES

PART 1

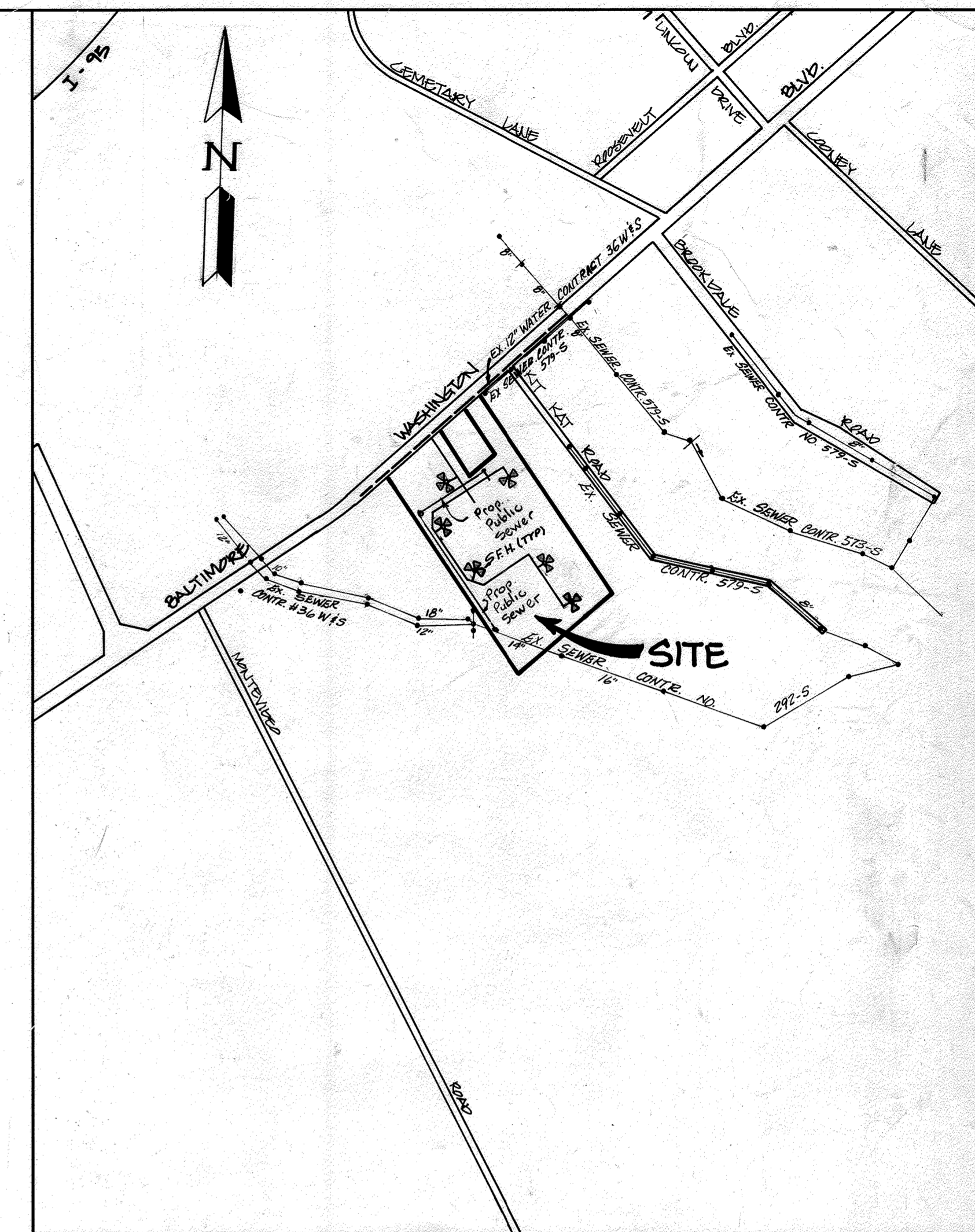
- APPROXIMATE LOCATION OF EXISTING MAINS ARE SHOWN. THE CONTRACTOR SHALL TAKE ALL NECESSARY PRECAUTIONS TO PROTECT EXISTING MAINS AND SERVICE AND MAINTAIN UNINTERRUPTED SUPPLY. ANY DAMAGE INCURRED SHALL BE REPAIRED IMMEDIATELY TO THE SATISFACTION OF THE ENGINEER AT THE CONTRACTOR'S EXPENSE.
- ALL HORIZONTAL CONTROLS ARE BASED ON MARYLAND STATE COORDINATES.
- ALL VERTICAL CONTROLS ARE BASED ON U.S.G.S. DATA.
- ALL PIPE ELEVATIONS ARE INVERT ELEVATIONS.
- CLEAR ALL UTILITIES BY A MINIMUM OF 6". CLEAR ALL POLES BY 2'-0" MINIMUM OR TUNNEL AS REQUIRED. THE OWNER HAS CONTACTED THE UTILITY COMPANIES AND HAS MADE ARRANGEMENTS FOR BRACING OF POLES AS SHOWN ON THE DRAWINGS. IN THE EVENT THE CONTRACTOR'S WORK REQUIRES THE BRACING OF ADDITIONAL POLES, ANY COST INCURRED BY THE OWNER FOR THE BRACING OF ADDITIONAL POLES, OR DAMAGE SHALL BE DEDUCTED FROM THE MONEY OWED TO THE CONTRACTOR. THE CONTRACTOR SHALL COORDINATE WITH THE UTILITY COMPANIES TO SCHEDULE THE BRACING OF POLES.
- FOR DETAILS NOT SHOWN ON THE DRAWINGS, AND FOR MATERIALS AND CONSTRUCTION METHODS, USE HOWARD COUNTY DESIGN MANUAL, VOL. IV, STANDARD SPECIFICATIONS AND DETAILS FOR CONSTRUCTION THE CONTRACTOR SHALL HAVE A COPY OF VOL. IV ON THE JOB.
- WHERE TEST PITS HAVE BEEN MADE ON EXISTING UTILITIES THEY ARE NOTED BY THE SYMBOL AT THE LOCATION OF THE TEST PIT. A NOTE OR NOTES CONTAINING RESULTS OF THE TEST PITS IS INCLUDED ON THE DRAWINGS. EXISTING UTILITIES IN THE VICINITY OF THE PROPOSED WORK FOR WHICH TEST PITS HAVE NOT BEEN DUG SHALL BE LOCATED BY THE CONTRACTOR TWO WEEKS IN ADVANCE OF CONSTRUCTION OPERATIONS AT HIS OWN EXPENSE.
- CONTRACTOR SHALL NOTIFY THE FOLLOWING UTILITIES OR AGENCIES AT LEAST FIVE WORKING DAYS BEFORE STARTING WORK SHOWN ON THESE PLANS: STATE HIGHWAY ADMINISTRATION 531-5533, BALTO. GAS & ELECTRIC COMPANY - CONTRACTOR SERVICES 850-4620, BALTO. GAS & ELECTRIC COMPANY - UNDERGROUND DAMAGE CONTROL 859-9004, BALTO. GAS & ELECTRIC COMPANY - TROUBLE SHOOTING 298-9001, MISS UTILITY 1-(301) 559-0100, COLONIAL PIPELINE 795-1390 BUREAU OF UTILITIES, HOWARD COUNTY DEPT. OF PUBLIC WORKS 992-2386, C & P TELEPHONE 1-(800) 257-7777.
- TREES AND SHRUBS ARE TO BE PROTECTED FROM DAMAGE TO MAXIMUM EXTENT. TREES AND SHRUBS LOCATED WITHIN THE CONSTRUCTION STRIP ARE NOT TO BE DAMAGED OR REMOVED BY THE CONTRACTOR.
- CONTRACTOR SHALL REMOVE TREES, STUMPS, AND ROOTS ALONG THE LINE OF EXCAVATION. PAYMENT FOR SUCH REMOVAL SHALL BE INCLUDED IN THE UNIT PRICE BID FOR CONSTRUCTION OR THE MAIN.
- PLACE REGULATION "MEN WORKING" WARNING SIGNS AS REQUIRED TO COMPLY WITH MARYLAND STATE HIGHWAY ADMINISTRATIONS MANUAL FOR HIGHWAY CONSTRUCTION AND MAINTENANCE OPERATIONS.

PART 2

- ALL WATER MAINS TO BE D.I.P. UNLESS OTHERWISE NOTED.
- TOPS OF ALL WATER MAINS TO HAVE A MINIMUM OF 3.5 COVER UNLESS OTHERWISE NOTED.
- VALVES ADJACENT TO TEES SHALL BE STRAPPED TO TEES.
- ALL FITTINGS SHALL BE BUTTRESSED OR ANCHORED WITH CONCRETE IN ACCORDANCE WITH THE STANDARD DETAILS UNLESS OTHERWISE PROVIDED ON THE DRAWINGS.
- FIRE HYDRANTS SHALL BE SET TO THE BURY LINE ELEVATION SHOWN ON THE DRAWINGS. ALL FIRE HYDRANTS SHALL BE STRAPPED AND BUTTRESSED WITH CONCRETE IN ACCORDANCE WITH THE STANDARD DETAILS. SOIL AROUND THE FIRE HYDRANT SHALL BE COMPACTED IN ACCORDANCE WITH SECTION 1003 AND 1008 OF THE STANDARD SPECIFICATIONS.
- THE CONTRACTOR SHALL NOT OPERATE ANY WATER MAIN VALVES ON THE EXISTING WATER SYSTEM.
- ALL WATER HOUSE CONNECTIONS SHALL BE INSIDE METER SETTINGS UNLESS OTHERWISE NOTED.
- ALL FIRE HYDRANTS TO BE SET THREE FEET BEHIND FACE OF CURB UNLESS NOTED OTHERWISE.
- ALL WATER HOUSE CONNECTIONS SHALL COMPLY WITH HOWARD CO. STD. 3.21 AS SHOWN ON ART. 40, SPECIAL PROVISIONS.
- MINIMUM CRIMP RADIUS WILL BE SPECIFIED BY PIPE MANUFACTURER.
- WATER MAINS AND WATER HOUSE CONNECTION LINES MUST BE PLACED SO AS TO HAVE AT LEAST ONE FOOT SEPARATION FROM THE SEWER MAIN OR SEWER HOUSE CONNECTION AS THEY PASS ABOUT IT.
- SERVICE CLAMPS ARE TO HAVE STAINLESS STRAPS.
- ALL D.I.P. FITTINGS SHALL BE ACCORDANCE WITH AWWA SPECIFICATION C-153 DUCTILE IRON COMPACT FITTINGS, 3-INCH THROUGH 12-INCH FOR WATER AND OTHER LIQUIDS.

PART 3

- ALL SEWER MAINS SHALL BE C.S.P.X., R.C.S.P., V.C.P.X., A.C.P. CLASS 2400 OR P.V.C. UNLESS OTHERWISE NOTED.
- THE CONTRACTOR SHALL PROVIDE A JOINT IN ALL SEWER MAINS WITHIN 2'-0" OF EXTERIOR MANHOLE WALL.
- ALL MANHOLES SHALL BE 4'-0" INSIDE DIAMETER UNLESS OTHERWISE NOTED.
- MANHOLES SHOWN WITH 12" WALLS ARE BRICK MANHOLES ONLY.
- MANHOLES DESIGNATED WITHIN THE PLAN AND PROFILE SHALL HAVE WATERTIGHT FRAME AND COVERS, STANDARD DETAIL G5.52. WHERE WATERTIGHT MANHOLE FRAME AND COVER IS USED, SET TOP OF FRAME 1'-6" ABOVE FINISHED GRADE UNLESS NOTED ON DRAWINGS.
- MANHOLES LOCATED WITHIN PROPOSED ROADWAY SHALL HAVE STANDARD HEAVY TRAFFIC MANHOLE FRAME AND COVER, STANDARD DETAIL G5.51.
- THE CONTRACTOR SHALL ARRANGE TO HAVE THE EXISTING UNDERGROUND CABLE FIELD-LOCATED PRIOR TO ANY EXCAVATION FOR THE SEWER MAIN.



LOCATION MAP
SCALE: 1" = 100'

TYPE OF BUILDING = ONE STORY OFFICE & WAREHOUSE
 NUMBER OF LOTS = 1
 NUMBER OF WATER HOUSE CONNECTIONS = 3
 NUMBER OF SEWER HOUSE CONNECTIONS = 3
 DRAINAGE AREA = DEEP RUN
 SEWER CODE 2870000
 WATER CODE - B01

QUANTITIES			
ITEMS	ESTIMATED	AS BUILT	MATERIAL/SUPPLIER
12" x 12" TAPPING SLEEVE & VALVE	1	1	MULLER Co / BENTON ROAD SUPPLY INC
12" VALVE	1	1	" " " " " " " "
8" VALVE	5	5	" " " " " " " "
6" VALVE	6	6	" " " " " " " "
12" x 12" CROSS	1	1	" " " " " " " "
12" x 8" TEE	1	1	" " " " " " " "
12" x 6" F.H. TEE	1	1	" " " " " " " "
8" x 6" F.H. TEE	5	5	" " " " " " " "
12" x 8" REDUCER	2	2	FRANKLIN INDUSTRIES Co / BENTON ROAD SUPPLY
8" CAP & BUTTRESS	2	2	" " " " " " " "
12" D.I.P	353'	343	U.S. PIPE / BENTON ROAD SUPPLY INC
8" D.I.P	1678'	1754'	" " " " " " " "
6" D.I.P	85'	76'	" " " " " " " "
8" SAN TOTAL BEHIND	20'		" " " " " " " "
8" x 8" TEE	1	1	MULLER Co / BENTON ROAD SUPPLY INC
F.H.	6	6	" " " " " " " "
8" SAN	1143'	1855'	FRANKLIN INDUSTRIES Co / BENTON ROAD SUPPLY
6" SAN	40'	46'	" " " " " " " "
8" SAN	7	5	ATLANTA RESISTOR Prod. Inc.
TYPE B DROP	2		" " " " " " " "

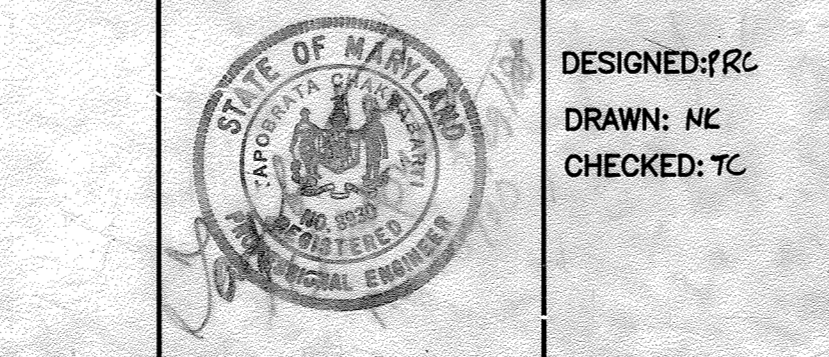
REVIEWED FOR HOWARD SOIL CONSERVATION DISTRICT AND MEETS TECHNICAL REQUIREMENTS
 APPROVED: *George Wm. Stephens Jr.* 9/20/88
 U.S. CONSERVATION SERVICES DATE

THE DEVELOPMENT PLAN IS APPROVED FOR SOIL EROSION AND SEDIMENT CONTROL BY THE HOWARD SOIL CONSERVATION DISTRICT.
 APPROVED: *Stephen L. Shum* 9/20/88
 HOWARD SOIL CONSERVATION DISTRICT DATE

SEDIMENT CONTROL MEASURES FOR THIS CONTRACT WILL BE IMPLEMENTED IN ACCORDANCE WITH SECTION 219 OF THE STANDARD SPECIFICATIONS AND SDP-2A-01.

DEPARTMENT OF PUBLIC WORKS
 HOWARD COUNTY, MARYLAND
 DIRECTOR OF PUBLIC WORKS DATE: *Robert M. Bennett* 9-19-88
 CHIEF, BUREAU OF UTILITIES DATE
 CHIEF, BUREAU OF ENGINEERING DATE: *James L. Jensen* 9/22/88
 CHIEF, LAND DEVELOPMENT DIVISION DATE

ENGINEER
GEORGE WM. STEPHENS JR.
 AND ASSOCIATES, INC.
 303 ALLEGHENY AVENUE TOWSON, MD. 21204
 (301) 825 - 8120



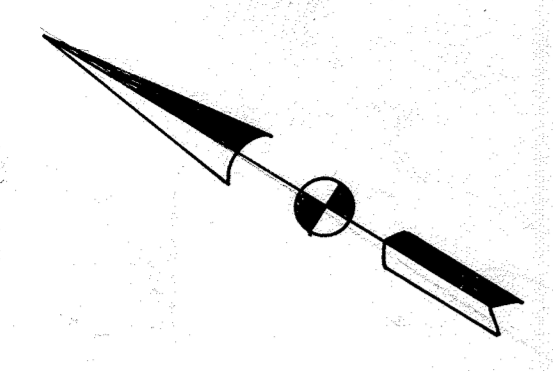
DESIGNED: JRC
 DRAWN: MC
 CHECKED: TC

BY	NO.	REVISION	DATE
OWS	1	CHANGED LENGTH 8" SAN, ADDED SAN, M.H. REV. QUANTITIES	1/16/88

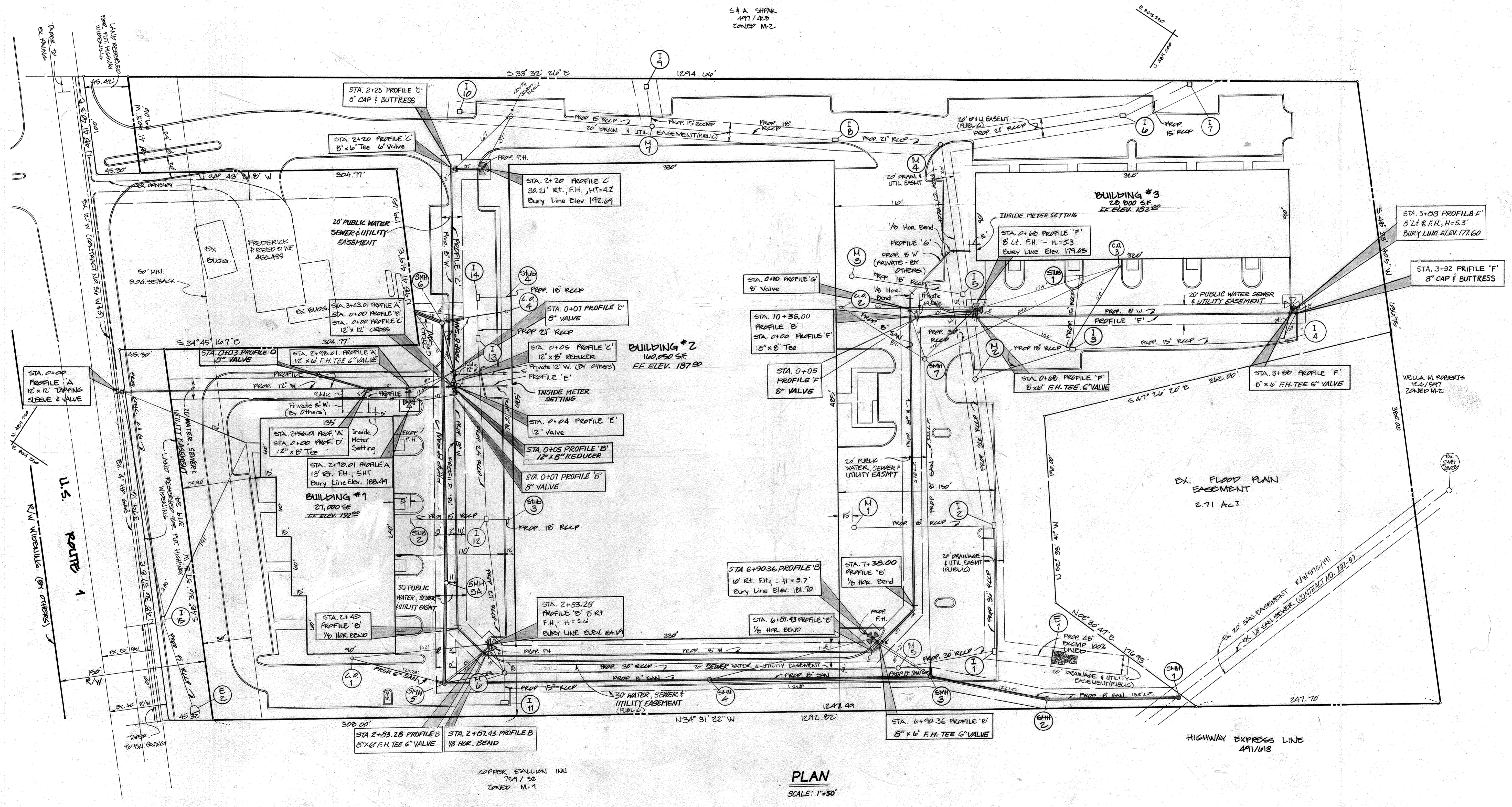
TITLE SHEET
 GENERAL NOTES FOR
 CONTRACT NO. 14-1850-D
 800 SCALE MAP NO. 43 BLOCK 4

PROPOSED OFFICE/WAREHOUSE
SCHATTNER PROPERTY
 HOWARD COUNTY, MD. ELECT DIST. # 1
 JULY 27, 1988

SCALE: AS SHOWN
 SHEET NO. 1 OF 3



S & A SHIPAK
497/ALB
CONJER M-2



PLAN
SCALE: 1"=50'

COPPER STATION INU
75A/52
ZONED M-1

REVIEWED FOR HOWARD SOIL CONSERVATION DISTRICT AND METERS TECHNICAL REQUIREMENTS
James M. ... 9/20/88
DATE

THE DEVELOPMENT PLAN IS APPROVED FOR SOIL EROSION AND SEDIMENT CONTROL BY THE HOWARD SOIL CONSERVATION DISTRICT. APPROVED:
Robert M. ... 9/20/88
DATE

SEDIMENT CONTROL MEASURES FOR THIS CONTRACT WILL BE IMPLEMENTED IN ACCORDANCE WITH SECTION 214 OF THE STANDARD SPECIFICATIONS AND SOP 89-01

DEPARTMENT OF PUBLIC WORKS
James M. ... 9/20/88
DIRECTOR OF PUBLIC WORKS
Robert M. ... 9-19-88
CHIEF, BUREAU OF UTILITIES
William S. ... 9-22-88
CHIEF, BUREAU OF ENGINEERING
William S. ... 9/20/88
CHIEF, LAND DEVELOPMENT DIVISION

ENGINEER
**GEORGE WM. STEPHENS, JR.
AND ASSOCIATES, INC.**
303 ALLEGHENY AVE. TOWSON, MD 21284
(301) 825-0120

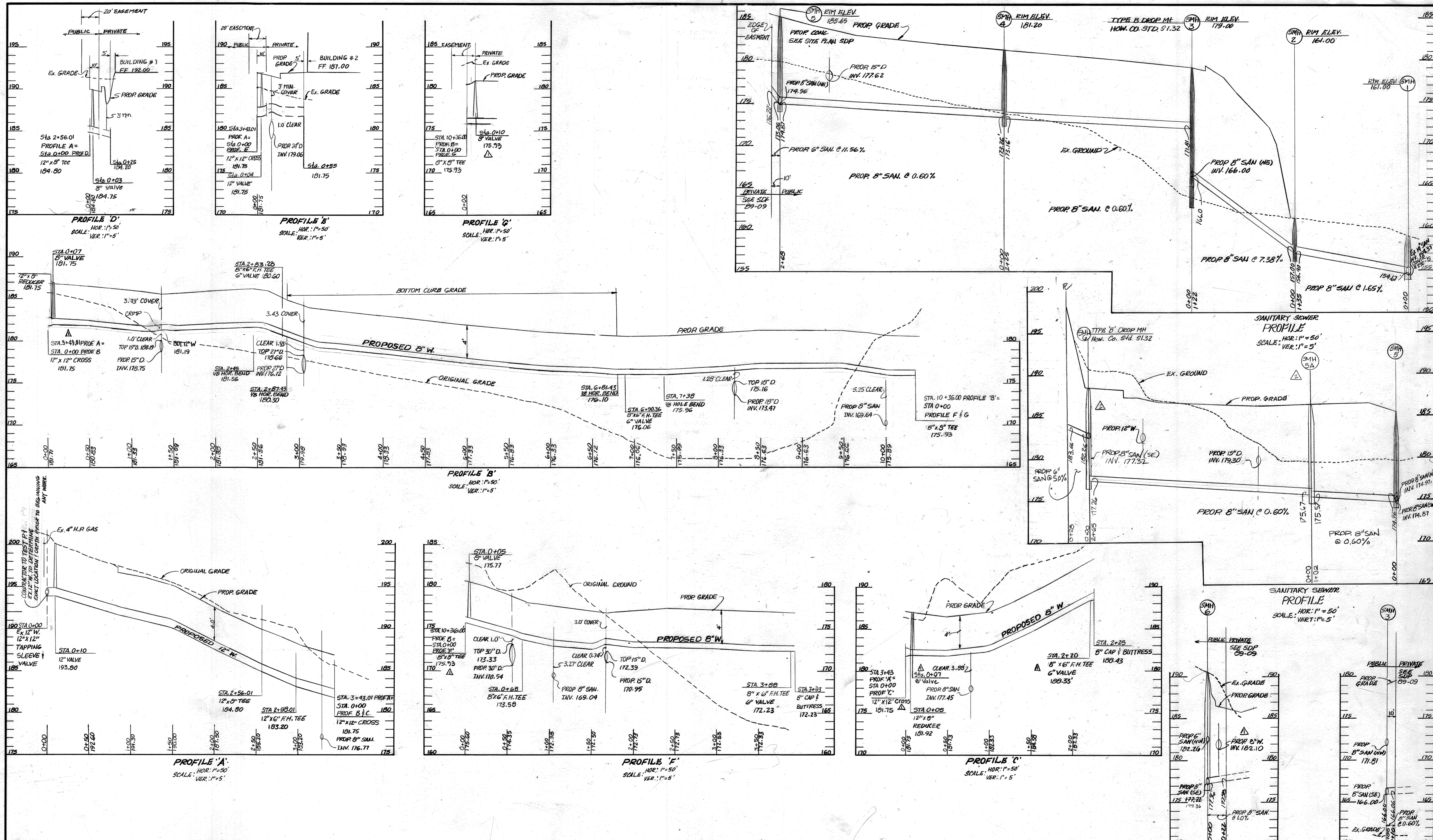


DESIGNED: P.R.C.
DRAWN: R.D.T.
CHECKED: T.C.

BY:	NO.	REVISION	DATE
GWS	1	Sta 0+10 Profile 'G' 8" Valve, Labeled CO #3	6/11/88
GWS	2	ADDED SMH #5A, REV. LOCATION SMH #6	

PLAN FOR
PROPOSED WATER MAIN
CONTRACT NO. 14-1050-D
W/D SCALE MAP No 43 BLOCK No 4

PROPOSED OFFICE/WAREHOUSE
SCHATTNER PROPERTY
HOWARD COUNTY, MARYLAND
ELECTION DISTRICT #1
SCALE: 1"=50'
SHEET 2 OF 3



REVIEWED FOR HOWARD SOIL CONSERVATION DISTRICT AND MEETS TECHNICAL REQUIREMENTS.
James M. Selva 9/20/88
 H.S. CONSERVATION SERVICE DATE

THE DEVELOPMENT PLAN IS APPROVED FOR SOIL EROSION AND SEDIMENT CONTROL BY THE HOWARD SOIL CONSERVATION DISTRICT APPROVED:
William D. Miller 9/20/88
 HOWARD SOIL CONSERVATION DISTRICT DATE

SEDIMENT CONTROL MEASURES FOR THIS CONTRACT WILL BE IMPLEMENTED IN ACCORDANCE WITH SECTION 219 OF THE STANDARD SPECIFICATIONS AND SDP 04-01
George Wm. Stephens, Jr. 9/20/88
 ENGINEER DATE

DEPARTMENT OF PUBLIC WORKS
James M. Selva 9/22/88
 DIRECTOR OF PUBLIC WORKS DATE
William D. Miller 9/22/88
 CHIEF, BUREAU OF ENGINEERING DATE

ENGINEER
GEORGE WM. STEPHENS, JR. AND ASSOCIATES, INC.
 303 ALLEGHENY AVENUE TOWSON, MD. 21204
 (301) 825-8120



DESIGNED: PC
 DRAWN: NK
 CHECKED: TC

BY	NO.	REVISION	DATE
G.W.S.	1	Removed Reducer Sta. 0+05 Profile G, Added 8" Valve Sta. 0+07 Profile C; 12" x 12" Cross Sta. 0+00 Profile C; 8" Valve Elev. Sta. 0+10 Profile G; 8" x 8" Tee Elev. Sta. 0+00 Profile F	11/1/88
G.W.S.	2	ADDED M.H.S.A. REV. LOCATION S.M.H.G.	11/1/88

PROFILE FOR PROPOSED WATER MAIN
 CONTRACT NO. 14-1050-D
 600 SCALE MAP #43 BLOCK 4

PROPOSED OFFICE / WAREHOUSE
SCHATTNER PROPERTY
 HOWARD COUNTY, MARYLAND ELECTION DISTRICT #1
 SCALE: AS SHOWN
 SHEET 3 OF 3