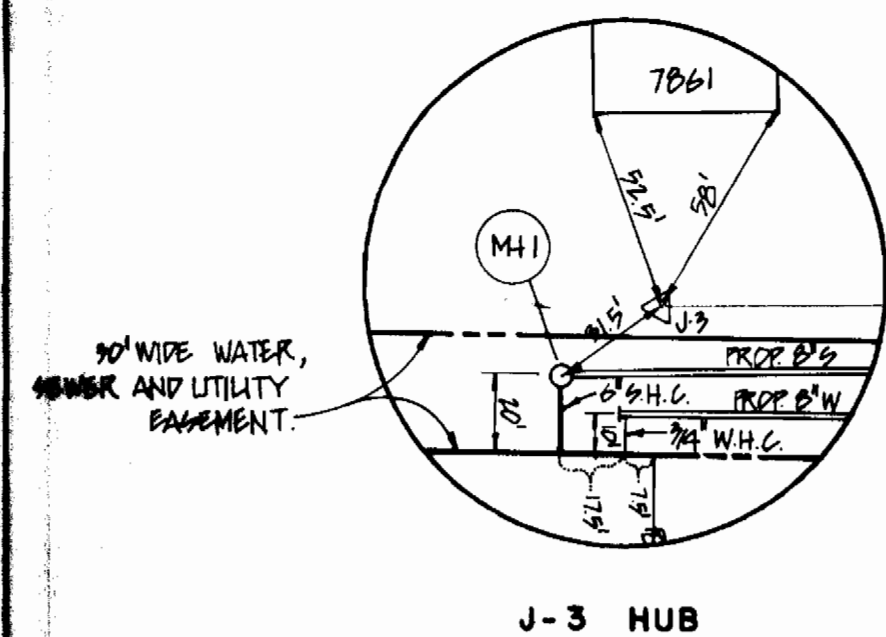


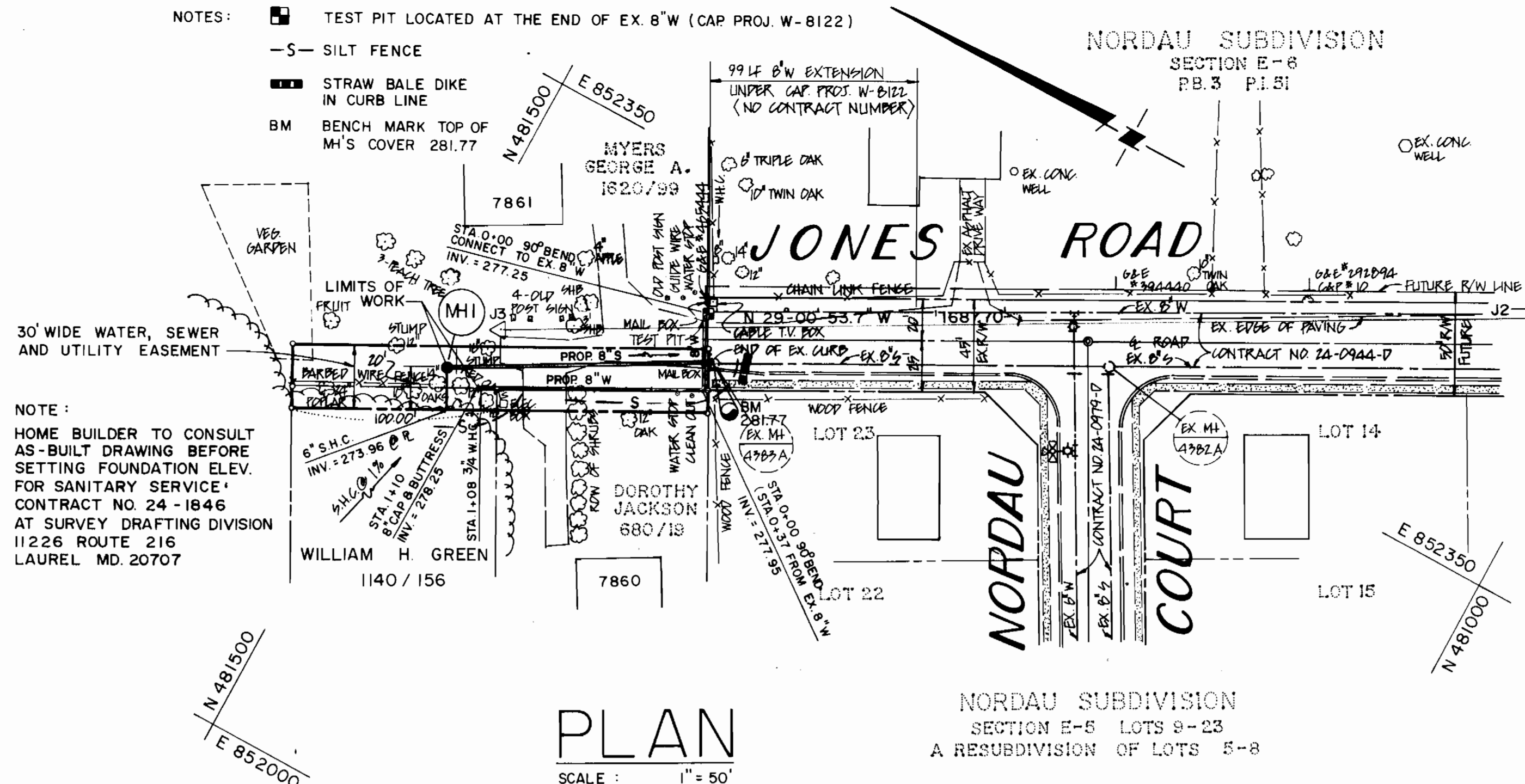
NOTES: ■ TEST PIT LOCATED AT THE END OF EX. 8" W (CAP PROJ. W-8122)

- S- SILT FENCE
- STRAW BALE DIKE IN CURB LINE
- BM BENCH MARK TOP OF MH'S COVER 281.77

NOTE:
HOME BUILDER TO CONSULT AS-BUILT DRAWING BEFORE SETTING FOUNDATION ELEV. FOR SANITARY SERVICE CONTRACT NO. 24-1846 AT SURVEY DRAFTING DIVISION 11226 ROUTE 216 LAUREL MD. 20707



J-3 HUB



PLAN
SCALE: 1" = 50'

NORDAU SUBDIVISION
SECTION E-5 LOTS 9-23
A RESUBDIVISION OF LOTS 5-8

SEWER CODE 4400000
WATER CODE B03
FOR COUNTY USE ONLY

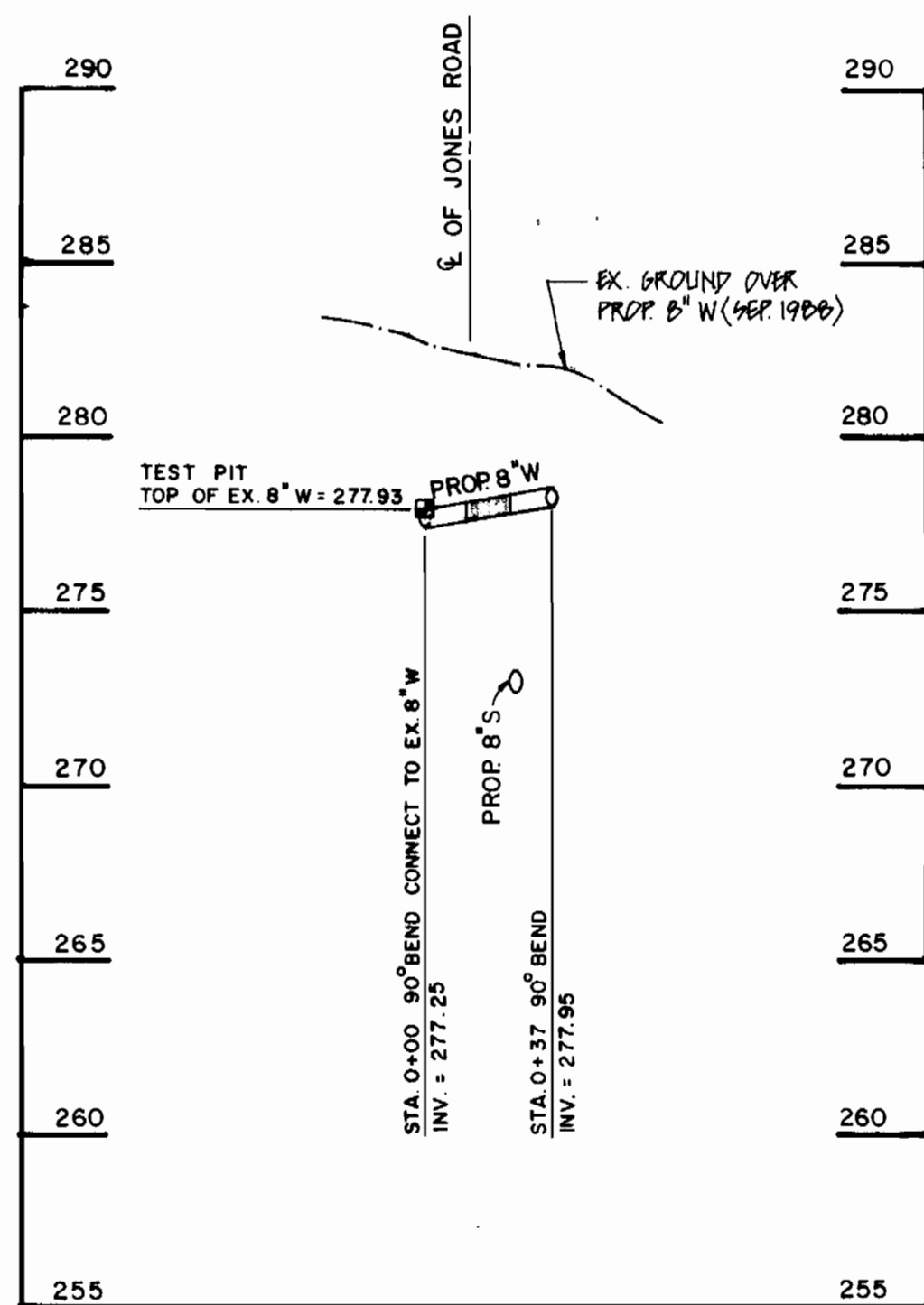
TYPE OF BUILDINGS	RESIDENTIAL
NUMBER OF PARCELS	1
NUMBER OF HOUSE CONNECTION	1
DRAINAGE AREA	SAVAGE

VICINITY MAP
SCALE: 1" = 600'

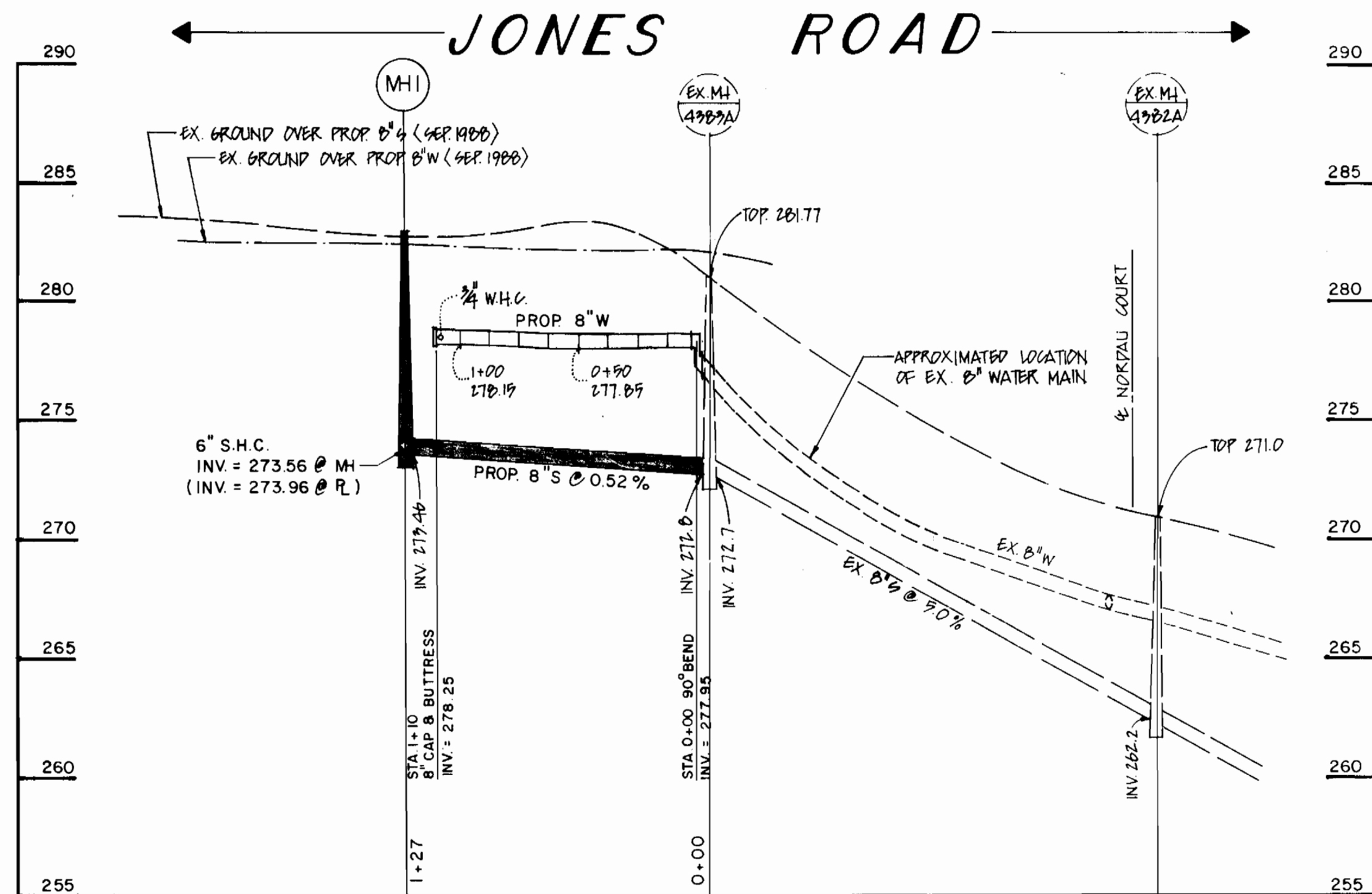
- GENERAL NOTES**
- APPROXIMATE LOCATION OF EXISTING MAINS ARE SHOWN. THE CONTRACTOR SHALL TAKE ALL NECESSARY PRECAUTIONS TO PROTECT EXISTING MAINS AND SERVICES AND MAINTAIN UNINTERRUPTED SUPPLY. ANY DAMAGE INCURRED SHALL BE REPAIRED IMMEDIATELY TO THE SATISFACTION OF THE ENGINEER AT THE CONTRACTOR'S EXPENSE.
 - ALL HORIZONTAL CONTROLS ARE BASED ON MARYLAND STATE COORDINATES.
 - ALL VERTICAL CONTROLS ARE BASED ON U.S.G.S. DATUM.
 - CLEAR ALL UTILITIES BY A MINIMUM OF 6"
 - FOR DETAILS NOT SHOWN ON THE DRAWINGS, AND FOR MATERIALS AND CONSTRUCTION METHODS, USE HOWARD COUNTY DESIGN MANUAL, VOLUME III, STANDARD SPECIFICATIONS AND DETAILS FOR CONSTRUCTION. THE CONTRACTOR SHALL HAVE A COPY OF VOLUME III ON THE JOB.
 - WHERE TEST PITS HAVE BEEN MADE ON EXISTING UTILITIES, THEY ARE NOTED BY THE SYMBOL ■ AT THE LOCATION OF THE TEST PIT. A NOTE, OR NOTES CONTAINING THE RESULTS OF THE TEST PIT OR PITS IS INCLUDED ON THE DRAWING. EXISTING UTILITIES IN THE VICINITY OF THE PROPOSED WORK FOR WHICH TEST PITS HAVE NOT BEEN DUG SHALL BE LOCATED BY THE CONTRACTOR TWO WEEKS IN ADVANCE OF CONSTRUCTION OPERATIONS AT HIS OWN EXPENSE.
 - CONTRACTOR SHALL NOTIFY THE FOLLOWING UTILITIES OR AGENCIES AT LEAST FIVE WORKING DAYS BEFORE STARTING WORK SHOWN ON THESE PLANS:

STATE HIGHWAY ADMINISTRATION 531-5533
BALTIMORE GAS & ELECTRIC COMPANY CONTRACTOR SERVICES 850-4620
BALTIMORE GAS & ELECTRIC COMPANY UNDER GROUND DAMAGE CONTROL 859-9004
BALTIMORE GAS & ELECTRIC COMPANY TROUBLE SHOOTING 298-9001
MISS UTILITY 1-800-257-7777
COLONIAL PIPELINE COMPANY 795-1390
BUREAU OF UTILITIES, HOWARD COUNTY DEPARTMENT OF PUBLIC WORKS 992-2366
CHESAPEAKE & POTOMAC (C & P) TELEPHONE COMPANY 1-800-257-7777

- TREES AND SHRUBS ARE TO BE PROTECTED FROM DAMAGE TO MAXIMUM EXTENT. TREES AND SHRUBS LOCATED WITHIN CONSTRUCTION STRIP ARE NOT TO BE REMOVED OR DAMAGED BY THE CONTRACTOR.
- CONTRACTOR SHALL REMOVE TREES, STUMPS AND ROOTS ALONG LINE OF EXCAVATION. PAYMENT FOR SUCH REMOVAL SHALL BE INCLUDED IN THE UNIT PRICE BID FOR CONSTRUCTION OF THE MAIN.
- MANHOLES DESIGNATED W.T. IN PLAN AND PROFILE SHALL HAVE WATERTIGHT FRAME AND COVERS STANDARD DETAIL G 5.52 WHERE WATERTIGHT MANHOLE FRAME AND COVER IS USED, SET TOP OF FRAME 1'-6" ABOVE FINISHED GRADE UNLESS OTHERWISE NOTED ON THE DRAWINGS.
- ALL SEWER MAINS SHALL BE C.S.P.X., R.C.S.P., V.C.P.X., OR P.V.C. UNLESS OTHERWISE NOTED.
- THE CONTRACTOR SHALL PROVIDE A JOINT IN ALL SEWER MAINS WITHIN 2'-0" OF EXTERIOR MANHOLE WALL.
- ALL MANHOLES SHALL BE 4'-0" INSIDE DIAMETER UNLESS OTHERWISE NOTED.
- MANHOLES SHOWN WITH 12" AND 16" WALLS ARE FOR BRICK MANHOLES ONLY.
- MANHOLES LOCATED WITHIN PROPOSED ROADWAY SHALL HAVE STANDARD HEAVY TRAFFIC MANHOLE FRAME AND COVER, STANDARD DETAIL G 5.51.
- ALL WATER MAINS TO BE D.I.P. UNLESS OTHERWISE NOTED.
- TOP OF ALL WATER MAINS TO HAVE A MINIMUM OF 3 1/2' COVER UNLESS OTHERWISE NOTED.
- VALVE ADJACENT TO TEES SHALL BE STRAPPED TO TEES.
- ALL FITTINGS SHALL BE BUTTRESSED OR ANCHORED WITH CONCRETE IN ACCORDANCE WITH THE STANDARD DETAILS UNLESS OTHERWISE PROVIDED FOR ON THE DRAWINGS.
- FIRE HYDRANTS SHALL BE SET TO THE BURY LINE ELEVATIONS SHOWN ON THE DRAWINGS. ALL FIRE HYDRANTS SHALL BE STRAPPED AND BUTTRESSED WITH CONCRETE IN ACCORDANCE WITH THE STANDARD DETAILS. SOIL AROUND THE FIRE HYDRANTS SHALL BE COMPACTED IN ACCORDANCE WITH SECTION 1003 OF THE STANDARD SPECIFICATIONS.
- THE CONTRACTOR SHALL NOT OPERATE ANY WATER MAIN VALVES ON THE EXISTING WATER SYSTEM.
- ALL WATER HOUSE CONNECTIONS SHALL BE FOR INSIDE METER SETTING, UNLESS OTHERWISE NOTED ON THE DRAWING OR IN THE SPECIFICATIONS.
- T.B. DENOTES TEST (SOIL) BORING.



PROFILE
SCALE: HOR. 1" = 50'
VERT. 1" = 5'



PROFILE
SCALE: HOR. 1" = 50'
VERT. 1" = 5'

QUANTITIES			
ITEM	BID	AS-BUILT	MATERIAL / SUPPLIER
8" SEWER PIPE	125 LF		
6" S.H.C.	20 LF		
4'-0" DIA MANHOLE	1 EA		
8" WATER PIPE	147 LF		
3/4" W.H.C.	10 LF		
8" - 90° BEND	2 EA		

SEDIMENT CONTROL NOTES

- SEDIMENT CONTROL APPROVAL IS PREDICATED ON DAILY BACKFILLING OF ALL OPEN TRENCHES.
- PROVISIONS SHALL BE MADE FOR DAILY CLEANUP OF ANY SEDIMENT THAT ACCUMULATES ON THE PUBLIC RIGHT-OF-WAY.

SEDIMENT CONTROL MEASURES FOR THIS CONTRACT WILL BE IMPLEMENTED IN ACCORDANCE WITH SECTION 219 OF THE HOWARD COUNTY DESIGN MANUAL VOL. IV STANDARD SPECIFICATIONS AND DETAILS FOR CONSTRUCTION, AND THE 1983 MARYLAND STANDARDS AND SPECIFICATIONS FOR SOIL EROSION AND SEDIMENT CONTROL.

REVIEWED FOR HOWARD COUNTY SOIL CONSERVATION DISTRICT AND MEETS TECHNICAL REQUIREMENTS
APPROVED: *[Signature]* 2/21/89
U.S. SOIL CONSERVATION SERVICE DATE

THIS PLAN IS APPROVED FOR EROSION AND SEDIMENT CONTROL BY THE HOWARD COUNTY SOIL CONSERVATION DISTRICT
APPROVED: *[Signature]* 2/21/89
HOWARD COUNTY SOIL CONSERVATION DISTRICT DATE

DEPARTMENT OF PUBLIC WORKS
HOWARD COUNTY, MARYLAND

PREPARED BY
HOWARD COUNTY, MARYLAND
DEPARTMENT OF PUBLIC WORKS
BUREAU OF ENGINEERING
SURVEY/DRAFTING DIVISION
11226 ROUTE 216
LAUREL, MARYLAND 20707



DES: T.E.B.

DRN: Y.P.

CHK:

DATE:

BY NO

REVISION

DATE

PLAN AND PROFILE

600 SCALE MAP NO. 42 BLOCK NO. 24

ROUTINE WATER & SEWER EXTENSION
JONES ROAD
CAPITAL PROJECT NO. S-6688
CONTRACT NO. 24-1846
ELECTION DISTRICT NO. 6
HOWARD COUNTY, MARYLAND

SCALE AS SHOWN

SHEET 1 OF 1