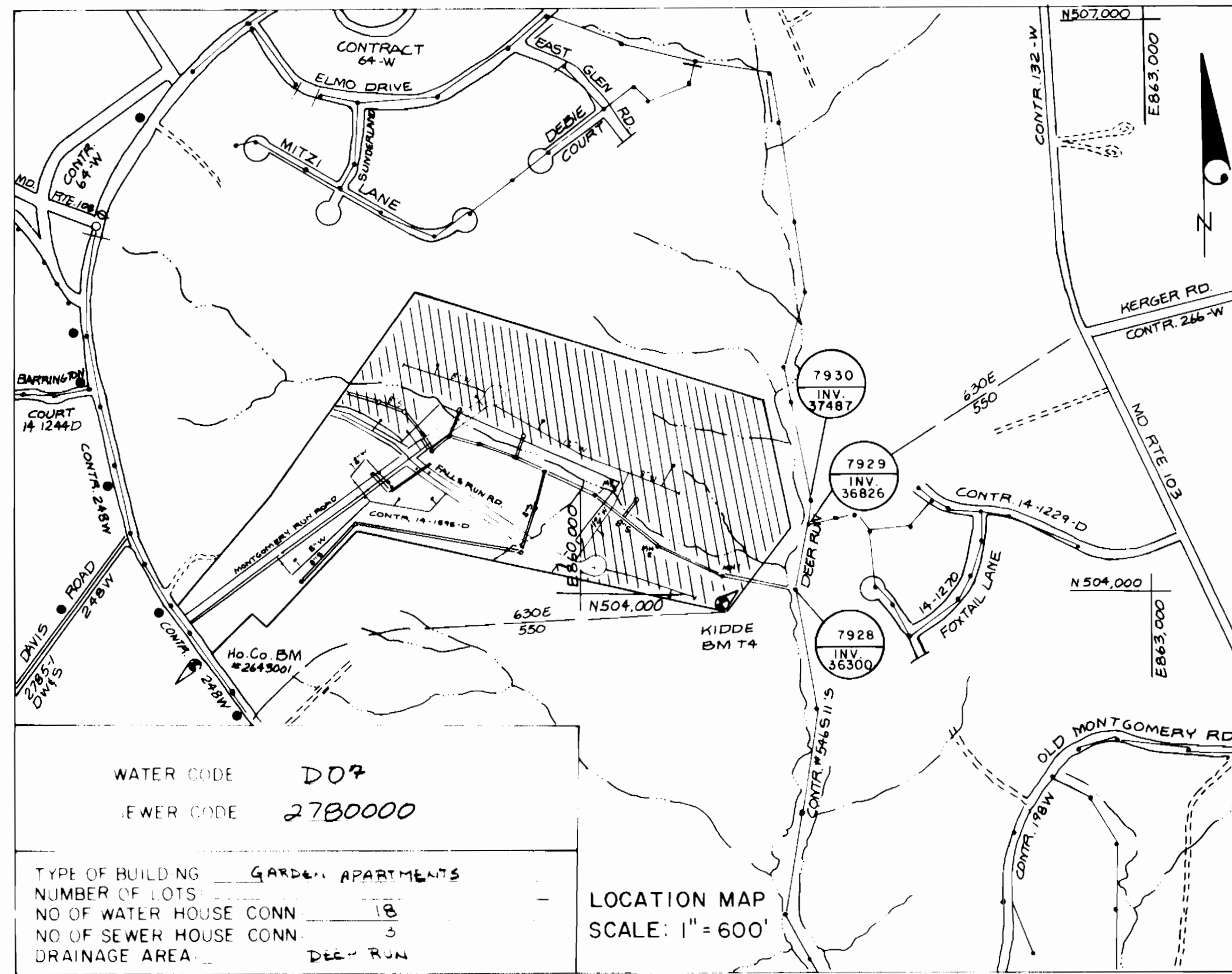


QUANTITIES			
ITEMS	DESIGN	AS BUILT	MAT'L SUPPLIER
8" SEWER	133 FT.	239 FT	AMERICAN R.P. Co.
6" SHC	30 FT.	30'	AMERICAN R.P. Co.
STD. MANHOLES	7	6	ATLANTIC PRECAST
BLOW-OFFS 4" V	4	2	ECLIPSE-KENNEDY
8" SEWER CL. 52 D.I.P.	411 FT.	612 FT	GRIFFIN R.P. Co.
12" WATER	2517 FT.	2497'	GRIFFIN R.P. Co.
8" WATER	796 FT.	791'	GRIFFIN R.P. Co.
FIRE HYDRANTS	8	7	KENNEDY
2" WHC	400 FT.	533'	Cambridge Loc
12" VALVES	5	4	KENNEDY
8" VALVES	3	1	KENNEDY
6" FH VALVES	8	7	KENNEDY
2" METER VAULTS	18	29	MAYER BROS. INC.
4" WATER	212 FT	435'	GRIFFIN R.P. Co.
6" VALVES	3	2	KENNEDY ECLIPSE
AIR RELEASE MH	1	1	

SEDIMENT CONTROL NOTES

- FOR SEDIMENT CONTROL FOR THIS CONTRACT, SEE THE APPROVED ROAD CONSTRUCTION PLANS.
- MATERIALS FROM TRENCH EXCAVATION TO BE PLACED ON UPHILL SIDE OF TRENCH.
- CONTRACTOR TO BACKFILL, COMPACT AND STABILIZE IMMEDIATELY AFTER INSTALLATION OF PIPE. NO TRENCHES WILL BE LEFT OPEN AT THE END OF EACH DAY, EXCEPT THAT PORTION WHERE WORK HAS STOPPED.
- ANY SEDIMENT CONTROL FACILITIES ENCOUNTERED DURING PIPE CONSTRUCTION TO BE RETURNED TO ORIGINAL CONDITION IMMEDIATELY UPON COMPLETION OF THAT PORTION OF WORK.
- SEDIMENT CONTROL MEASURES FOR THIS CONTRACT WILL BE IMPLEMENTED IN ACCORDANCE WITH SECTION 219 OF THE HOWARD COUNTY STANDARDS SPECIFICATIONS AND AS PER ROAD CONSTRUCTION PLANS ~~501-88-218~~ F-88-258



GENERAL NOTES

- APPROXIMATE LOCATION OF EXISTING MAINS ARE SHOWN. THE CONTRACTOR SHALL TAKE ALL NECESSARY PRECAUTIONS TO PROTECT EXISTING MAINS AND SERVICES AND MAINTAIN UNINTERRUPTED SUPPLY. ANY DAMAGE INCURRED SHALL BE REPAIRED IMMEDIATELY TO THE SATISFACTION OF THE ENGINEER AT THE CONTRACTOR'S EXPENSE.
- ALL HORIZONTAL CONTROLS ARE BASED ON MARYLAND STATE COORDINATES.
- ALL VERTICAL CONTROLS ARE BASED ON USGS DATUM.
- ALL PIPE ELEVATIONS SHOWN ARE INVERT ELEVATIONS.
- CONTRACTOR SHALL NOTIFY THE FOLLOWING UTILITIES OR AGENCIES AT LEAST FIVE (5) WORKING DAYS BEFORE STARTING WORK SHOWN ON THESE PLANS:
STATE HIGHWAY ADMINISTRATION 531-5533
BALTIMORE GAS & ELECTRIC CO UNDERGROUND ELECTRIC DISTRIBUTION CUSTOMER SERVICE 685-0123
BALTIMORE GAS & ELECTRIC CO UNDERGROUND GAS DISTRIBUTION CUSTOMER SERVICE 685-0123
ENGINEERING DAMAGE CONTROL 234-5621
MISSISSIPPI UTILITY 1-559-0100
CHESAPEAKE & POTOMAC (C&P) TELEPHONE CO 725-9976
AMERICAN TELEPHONE & TELEGRAPH CABLE LOCATION DIVISION 393-3553
COLONIAL PIPELINE CO 795-1390
BUREAU OF UTILITIES HOWARD COUNTY 992-2366
- TREES ARE TO BE PROTECTED FROM DAMAGE TO MAXIMUM EXTENT. TREES LOCATED WITHIN THE CONSTRUCTION STRIP ARE NOT TO BE REMOVED OR DAMAGED BY THE CONTRACTOR.
- CONTRACTOR SHALL REMOVE TREES, STUMPS AND ROOTS ALONG LINE OF EXCAVATION AS DIRECTED BY THE ENGINEER. PAYMENT FOR SUCH REMOVAL SHALL BE INCLUDED IN THE UNIT PRICE BID FOR CONSTRUCTION OF THE MAIN.
- PLACE REGULATION "MEN WORKING" AND WARNING SIGNS AS REQUIRED TO COMPLY WITH MARYLAND STATE HIGHWAY ADMINISTRATION MANUAL OF TRAFFIC CONTROL FOR HIGHWAY CONSTRUCTION AND MAINTENANCE OPERATIONS.
- ALL WATER MAINS TO BE CLASS 52 D.I.P. UNLESS OTHERWISE NOTED.
- TOP OF ALL WATER MAINS TO HAVE A MINIMUM OF 3'-6" COVER UNLESS OTHERWISE NOTED.
- VALVES ADJACENT TO TEES SHALL BE STRAPPED TO TEES.
- BLOCK ALL FITTINGS WITH CONCRETE.
- BURY LINE ELEVATIONS ON FIRE HYDRANTS SHALL BE SET TO THE ELEVATIONS SHOWN ON THE DRAWINGS. ALL FIRE HYDRANTS SHALL BE STRAPPED AND BUTTRESSED WITH CONCRETE IN ACCORDANCE WITH STANDARD DETAILS.
- THE CONTRACTOR SHALL NOT OPERATE ANY WATER MAIN VALVES ON THE EXISTING SYSTEM.
- ALL SEWER MAINS SHALL BE 8" P.V.C. S.P.V.C.P. A.C.P. CLASS 2400 OR PVC UNLESS OTHERWISE NOTED.
- THE CONTRACTOR SHALL PROVIDE A JOINT IN ALL SEWER MAINS WITHIN 2'-0" OF EXTERIOR MANHOLE WALL.
- ALL MANHOLES SHALL BE 4'-0" INSIDE DIAMETER UNLESS OTHERWISE NOTED.
- MANHOLES SHOWN WITH 12" AND 16" WALLS ARE BRICK MANHOLES ONLY.
- MANHOLES DESIGNATED W.T. IN PLAN AND PROFILE SHALL HAVE WATERTIGHT FRAME AND COVERS STANDARD DETAIL G 5 52 WHERE WATERTIGHT MANHOLE FRAME AND COVER IS USED, SET TOP OF FRAME 1'-6" ABOVE FINISHED GRADE STANDARD DETAIL G 5 41.
- ALL D.I.P. FITTING SHOULD BE IN ACCORDANCE WITH AWWA SPECIFICATIONS C-153 DUCTILE IRON COMPACT FITTING 3" THRU 12" FOR WATER AND OTHER LIQUIDS.

VILLAGE OF MONTGOMERY RUN

HOWARD COUNTY, MARYLAND

DEPARTMENT OF PUBLIC WORKS

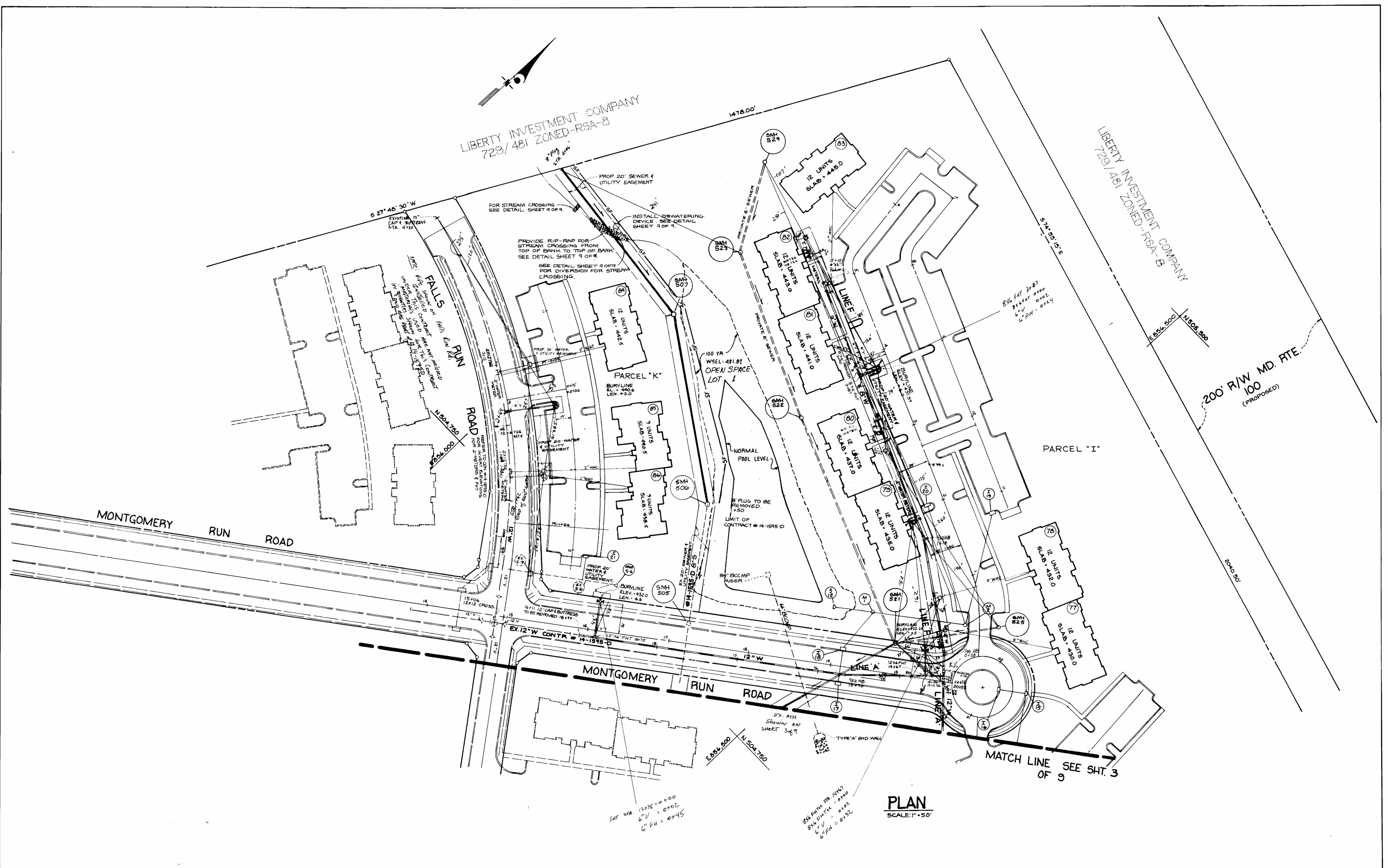
CONTRACT NO. 14-1827-D

ENGINEER'S CERTIFICATE

I hereby certify that to the best of my knowledge and belief that the As-Built information shown hereon is accurate and complete.

Robert W. Smith 3/17/88
Reg. Prof. Engineer No. 10242 Date

REVIEWED FOR HOWARD SOIL CONSERVATION DISTRICT AND MEETS TECHNICAL REQUIREMENTS. <i>J. Helms</i> 9/29/88 U.S. SOIL CONSERVATION SERVICE	THIS DEVELOPMENT PLAN IS APPROVED FOR SOIL EROSION AND SEDIMENT CONTROL BY THE HOWARD COUNTY CONSERVATION DISTRICT. APPROVED: <i>John R. Robertson</i> 9/27/88 HOWARD S.C.D. DATE	LOCATION MAP PLAN AND PROFILES	VILLAGE OF MONTGOMERY RUN TAX MAP 31 & 37 PARCELS 'I', 'J', 'K', OPEN SPACE LOTS 1 & 2 1 ST ELECTION DISTRICT HOWARD COUNTY, MARYLAND 14-1827-D	SCALE AS SHOWN SHEET 1 OF 3
DEPARTMENT OF PUBLIC WORKS HOWARD COUNTY, MARYLAND <i>James G. Hill</i> 10/6/88 <i>Robert W. Smith</i> 10-3-88	KIDDE CONSULTANTS INC. ENGINEERS, PLANNERS & SURVEYORS 1100 WEST STREET / SUITE 100 LAUREL, MD 20707 (301) 792-8086 (301) 953-1821 JOHN E.C. PATMORE MD. PE. NO. 8978	QUANTITIES CHART 4/2/88	AS-BUILT 1/11/90	AS-BUILT 3-14-84



PLAN
SCALE: 1" = 50'

DEPARTMENT OF PUBLIC WORKS
HOWARD COUNTY, MARYLAND

James J. ... 10/5/88
DIRECTOR OF PUBLIC WORKS

Robert ... 10-3-88
CHIEF, BUREAU OF UTILITIES

William ... 10-4-88
CHIEF, BUREAU OF ENGINEERING

James ... 10/9/88
CHIEF, LAND DEVELOPMENT DIV.

KIDDE CONSULTANTS INC.
ENGINEERS, PLANNERS & SURVEYORS
1100 WEST STREET / SUITE 100
LAUREL, MD. 20707
(301) 792-8086 (301) 953-1821

JOHN E.C. PATMORE MD. PE. No. 8978



DES.	
DRAWN	
CHECKED	
DATE	
BY	
NO.	

ADD. CHECK - CIV. ALIGNMENT BETWEEN SMH 507 AND SMH 526

LOCATION MAP
8" AND 12" WATER
8" SANITARY SEWER
PLAN AND PROFILES
CONTRACT NO. 14-1827-D

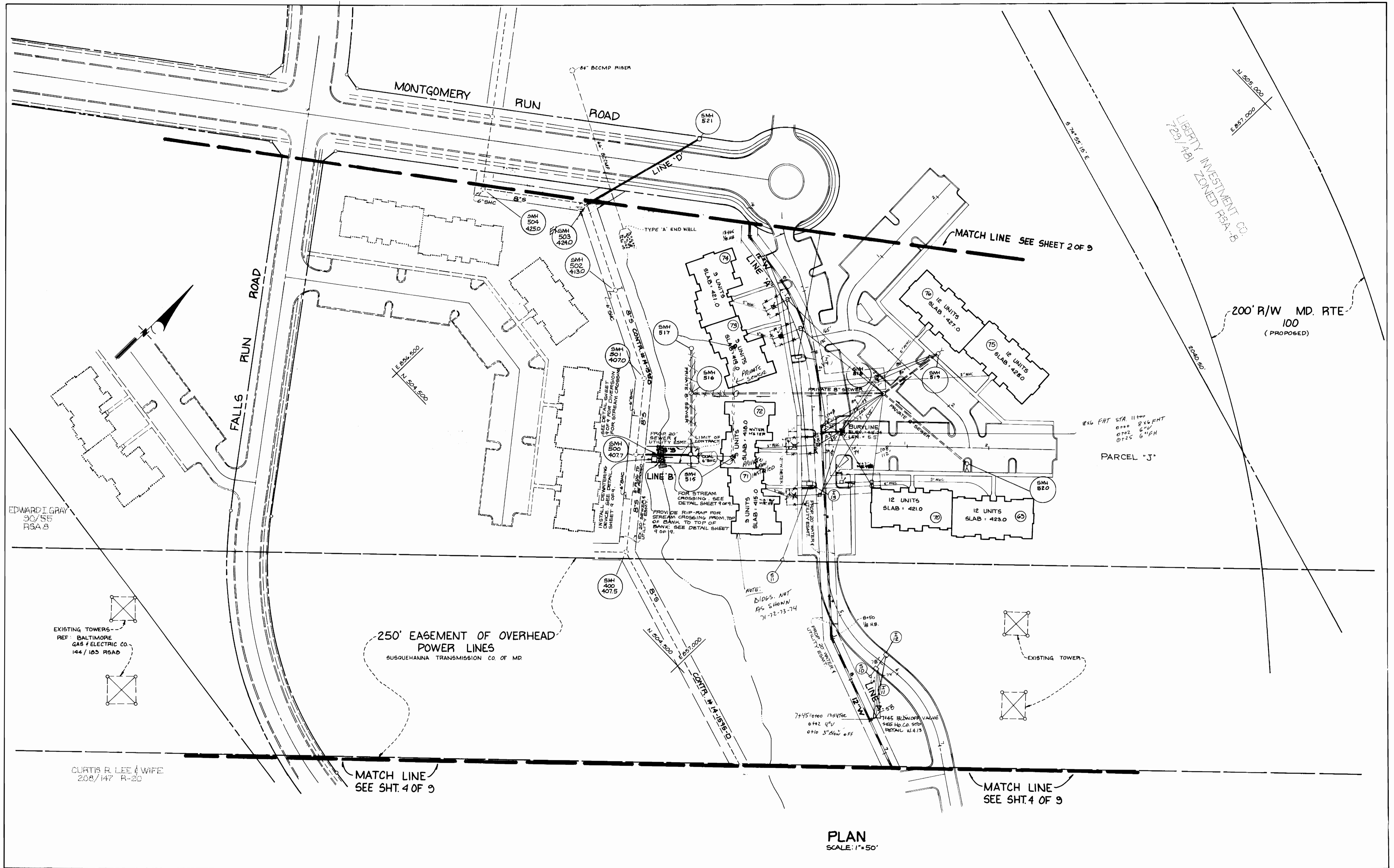
VILLAGE OF MONTGOMERY RUN
TAX MAP 31 & 37 PARCELS "I", "J", "K", OPEN SPACE LOTS 1 & 2
1ST ELECTION DISTRICT
HOWARD COUNTY MARYLAND

SCALE AS SHOWN
SHEET 2 OF 9

AS-BUILT 1/17/90

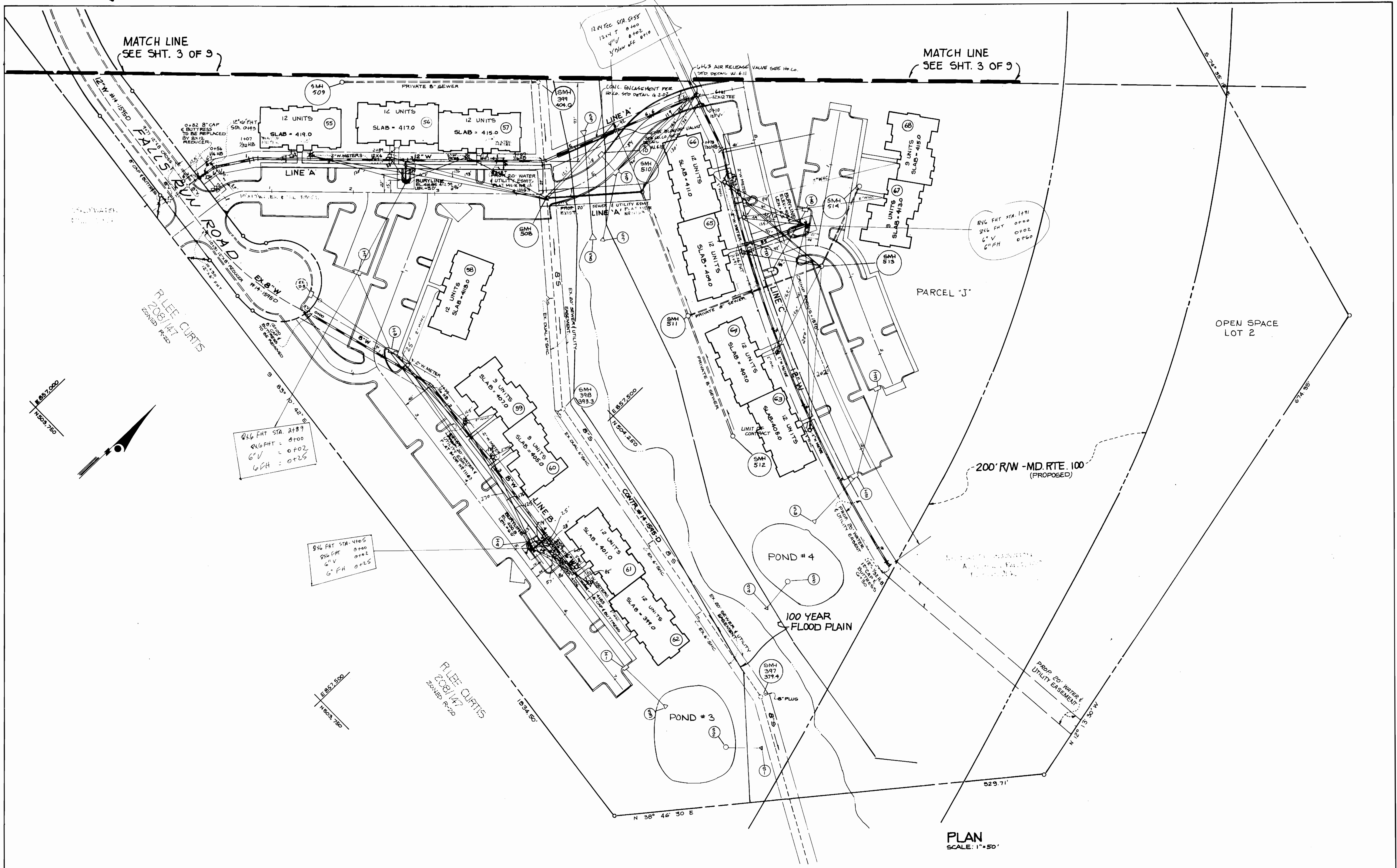
AS-BUILT 3-14-94

BRUNING 44 132 69 950



<p>DEPARTMENT OF PUBLIC WORKS HOWARD COUNTY, MARYLAND</p> <p><i>James J. Lee</i> 10/5/88 DIRECTOR OF P.W. DATE</p> <p><i>Robert M. Beaman</i> 10-1-88 CHIEF, BUREAU OF UTILITIES DATE</p> <p><i>William B. Reilly</i> 10-4-88 CHIEF BUREAU OF ENGINEERING DATE</p> <p><i>Paul J. Hopper</i> 10/4/88 CHIEF, LAND DEVELOPMENT DIV. DATE</p>	<p>KIDDE CONSULTANTS INC. ENGINEERS, PLANNERS & SURVEYORS 1100 WEST STREET / SUITE 100 LAUREL, MD. 20707 (301) 792-8086 (301) 953-1821 JOHN E.C. PATMORE MD. P.E. No. 8978</p>		<table border="1"> <tr> <td>DES:</td> <td></td> <td></td> <td></td> <td></td> <td></td> </tr> <tr> <td>URN:</td> <td></td> <td></td> <td></td> <td></td> <td></td> </tr> <tr> <td>CHK:</td> <td>G.K.</td> <td>2</td> <td>REVISE WATER LINE AND ADD WHO'S</td> <td>7/2/89</td> <td></td> </tr> <tr> <td>DATE:</td> <td>R.Z.</td> <td>1</td> <td>ADDED BLOWOFF VALVE</td> <td>2/22/89</td> <td></td> </tr> <tr> <td>BY:</td> <td>NO</td> <td></td> <td>REVISION</td> <td></td> <td></td> </tr> </table>	DES:						URN:						CHK:	G.K.	2	REVISE WATER LINE AND ADD WHO'S	7/2/89		DATE:	R.Z.	1	ADDED BLOWOFF VALVE	2/22/89		BY:	NO		REVISION			<p>LOCATION MAP 8" AND 12" WATER 8" SANITARY SEWER PLAN AND PROFILES CONTRACT NO. 14-1827-D</p>	<p>VILLAGE OF MONTGOMERY RUN TAX MAP 31 & 37 PARCELS "I", "J", "K", OPEN SPACE LOTS 1 & 2 1ST ELECTION DISTRICT HOWARD COUNTY MARYLAND</p>	<p>SCALE AS SHOWN</p> <p>SHEET 3 OF 9</p>
DES:																																				
URN:																																				
CHK:	G.K.	2	REVISE WATER LINE AND ADD WHO'S	7/2/89																																
DATE:	R.Z.	1	ADDED BLOWOFF VALVE	2/22/89																																
BY:	NO		REVISION																																	

AS-BUILT 1/17/90 AS-BUILT 3-14-94



DEPARTMENT OF PUBLIC WORKS
HOWARD COUNTY, MARYLAND

James J. Lewis 10/5/88
DIRECTOR OF PUBLIC WORKS DATE

Robert Benner 10-3-88
CHIEF, BUREAU OF UTILITIES DATE

Michael J. Sporn 10/4/88
CHIEF, LAND DEVELOPMENT DIV. DATE

KIDDE CONSULTANTS INC.
ENGINEERS, PLANNERS & SURVEYORS
1100 WEST STREET / SUITE 100
LAUREL, MD. 20707
(301) 792-8086 (301) 953-1821

JOHN E.C. PATMORE MD. PE. No. 8978

DES:					
DRN:					
CHK:	PZ	3	CHANGED LOCATION OF FIRE HYDRANT	11/11/89	
	BK	2	ADDED P. W.H.C.'S	7/21/89	
DATE:	PZ	1	ADDED BURN OFF VALVE, AIR RELEASE & CONG. ENCASUREMENT	1/22/89	
BY:	NO		REVISION		

LOCATION MAP
8" and 12" WATER
8" SANITARY SEWER
PLAN AND PROFILES
CONTRACT NO. 14-1827-D

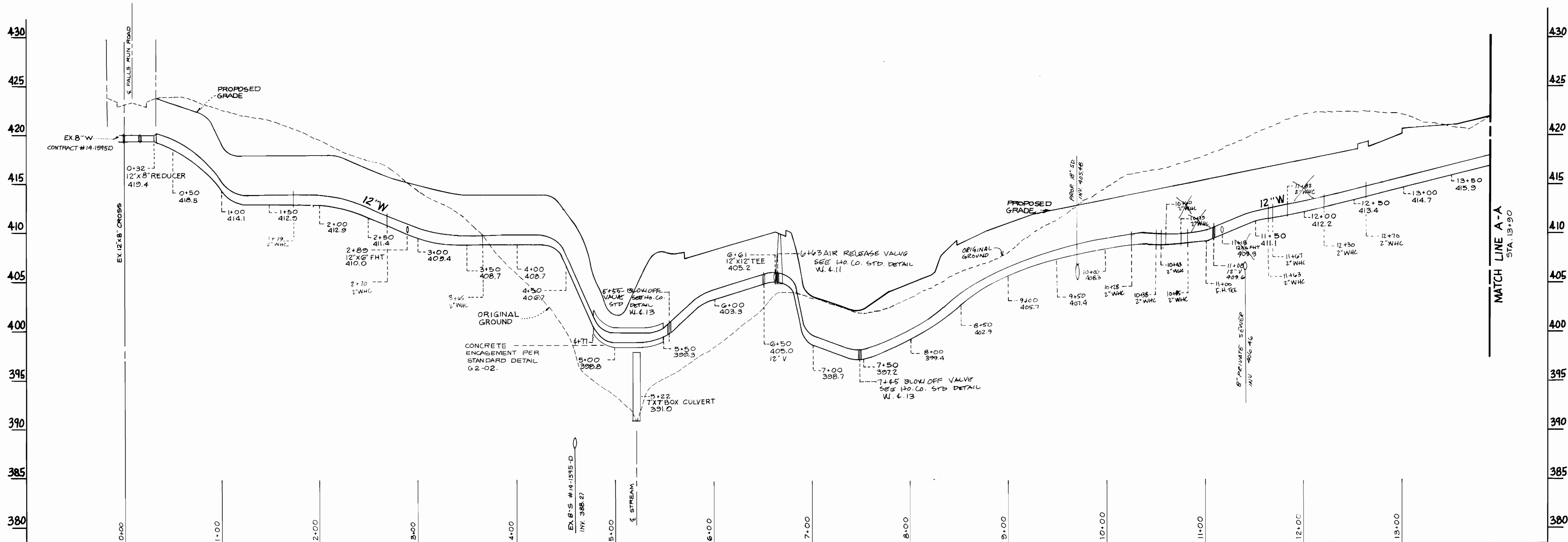
600 SCALE MAP NO. 31 BLOCK NO.

VILLAGE OF MONTGOMERY RUN
TAX MAP 31 & 37 PARCELS "I", "J", "K", OPEN SPACE LOTS 1 & 2
1 ELECTION DISTRICT
HOWARD COUNTY, MARYLAND

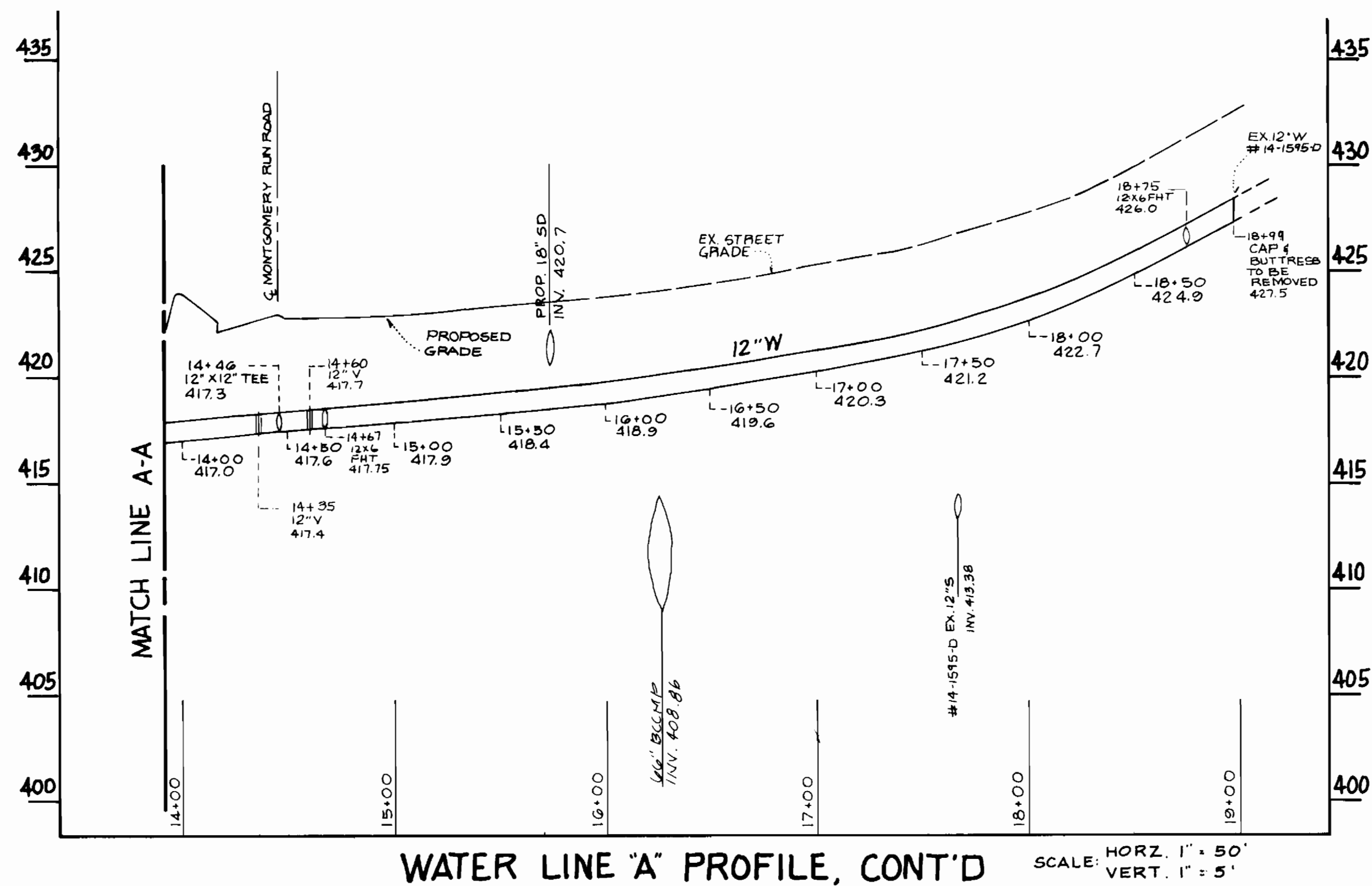
SCALE AS SHOWN
SHEET 4 OF 9

AS-BUILT 1/18/90

AS-BUILT 3-14-94



WATER LINE "A" PROFILE
 HORZ. 1" = 50'
 SCALE: VERT. 1" = 5'



WATER LINE "A" PROFILE, CONT'D
 SCALE: HORZ. 1" = 50'
 VERT. 1" = 5'

DEPARTMENT OF PUBLIC WORKS
 10/3/88
 DIRECTOR OF PUBLIC WORKS
 10-3-88
 CHIEF, BUREAU OF UTILITIES

KIDDE CONSULTANTS INC.
 ENGINEERS, PLANNERS & SURVEYORS
 1100 WEST STREET / SUITE 100
 LAUREL, MD 20707
 (301) 792-8080 (301) 953-1821
 JOHN E.C. PATMORE MD P.E. No. 8978



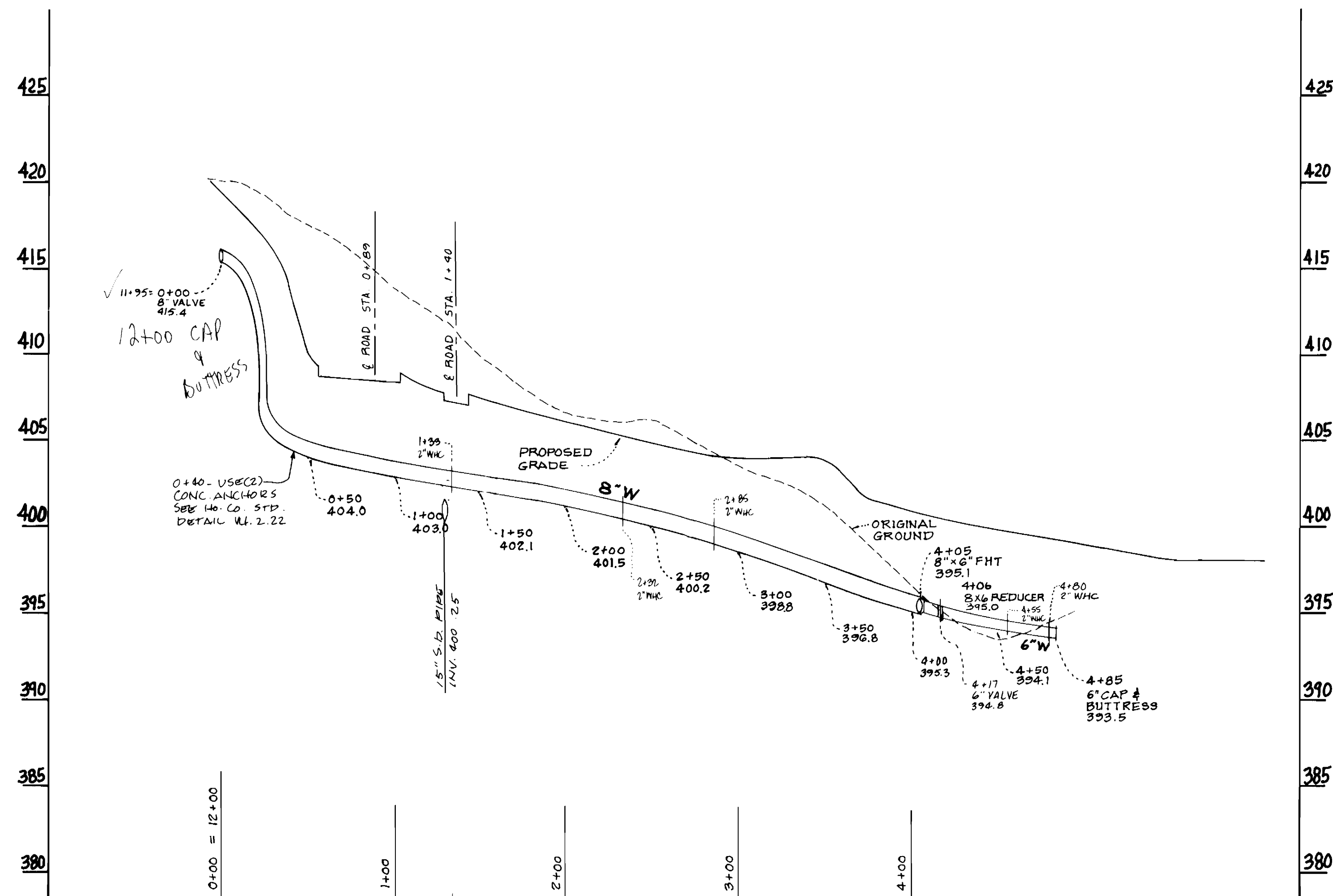
DES.	
DRN.	
CHK.	SK
DATE	7/21/89
BY	P.Z.
NO	1
REVISION	ADDED BLOW OFF VALVE AIR RELEASE & 6\"/>

PHASE II PROFILE OF
 8" & 12" WATER
 CONTRACT NO. 14-1827-D

VILLAGE OF MONTGOMERY RUN
 TAX MAP 31 & 37 PARCELS "I", "J", "K", OPEN SPACE LOTS 1 & 2
 1st ELECTION DISTRICT HOWARD COUNTY, MD.

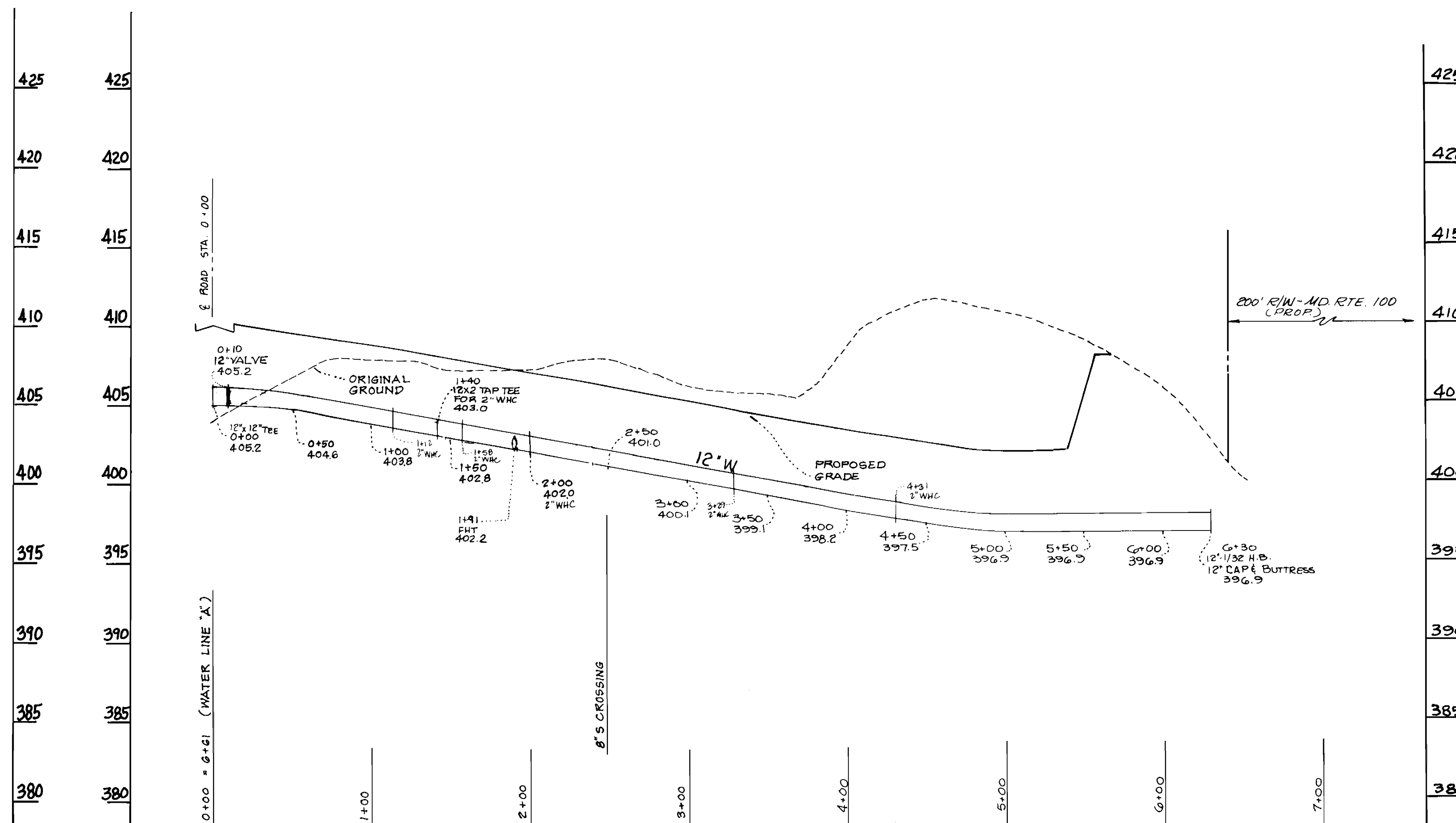
SHEET 5 OF 9

AS-BUILT 1/18/90



WATER LINE "B" PROFILE

SCALE: HORZ. 1"=50'
VERT. 1"=5'

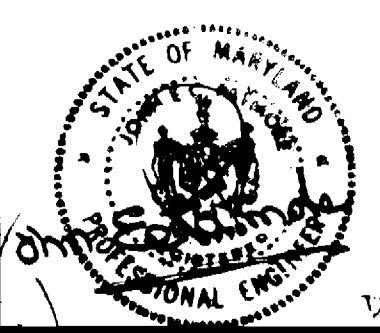


WATER LINE "C" PROFILE

SCALE: VERT. 1"=5'
HORZ. 1"=50'

DEPARTMENT OF PUBLIC WORKS
 10/5/88
 DIRECTOR OF PUBLIC WORKS
 10-3-88
 CHIEF BUREAU OF UTILITIES

KIDDE CONSULTANTS INC.
 ENGINEERS, PLANNERS & SURVEYORS
 100 WEST STREET / SUITE 100
 LAUREL, MD 20707
 (301) 792-8088 (301) 953-1821
 JOHN E.C. PATMORE MD P.E. No. 8978



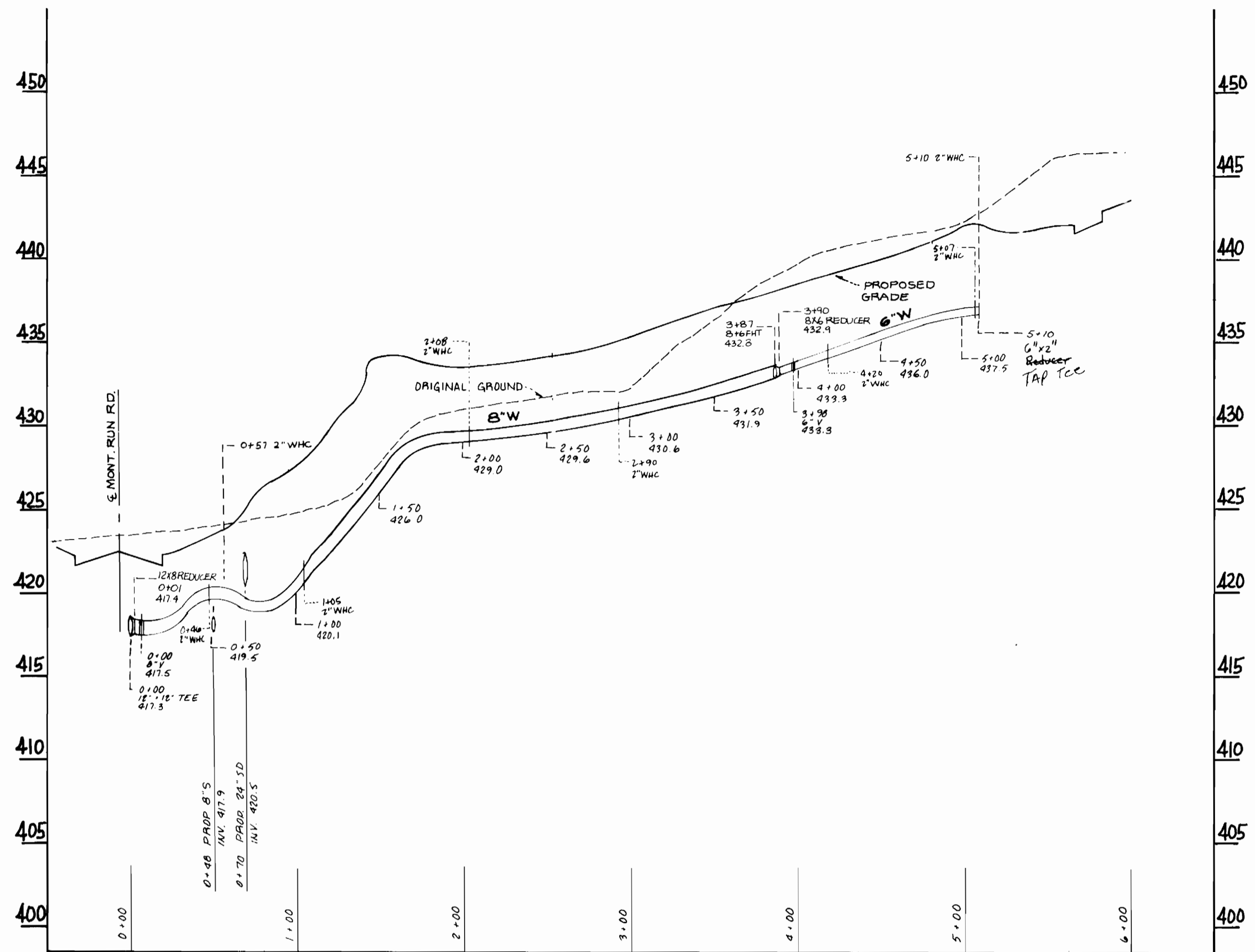
DES.			
DRN.			
CHK.	S.K.	ADDED W/C'S	7/21/89
DATE:	P.Z.	ADDED 15" S.D. AND NOTE ABOUT CONC. ANCHOR	
BY NO.		REVISION	

PHASE II PROFILE OF
 8" & 12" WATER
 CONTRACT NO. 14-1827-D
 DATE: 600' SCALE MAP NO. 31 BLOCK NO. _____

VILLAGE OF MONTGOMERY RUN
 TAX MAP 31437 PARCELS "I", "J", "K", OPEN SPACE LOTS 1 & 2
 1st ELECTION DISTRICT HOWARD COUNTY, MD.

SCALE AS SHOWN
 SHEET 6 OF 9

AS-BUILT 11/18/90



WATER LINE 'F' PROFILE
 SCALE : VERT. 1"=5'
 HORZ. 1"=50'

DEPARTMENT OF PUBLIC WORKS
 HOWARD COUNTY, MARYLAND

James P. Sullivan 10/3/88
 DIRECTOR OF PUBLIC WORKS

Ralph B. Seaman 10-3-88
 CHIEF, BUREAU OF UTILITIES

Richard B. Quinn 10/4/88
 CHIEF, LAND DEVELOPMENT DIV.

KIDDE CONSULTANTS INC.
 ENGINEERS, PLANNERS & SURVEYORS
 1100 WEST STREET / SUITE 100
 LAUREL, MD. 20707
 (301) 792-8086 (301) 953-1821

JOHN E.C. PATMORE MD. P.E. No. 8978



DATE	7/21/89
BY	S.K.
CHECKED	ADDED WHC'S
SCALE	MAP 1"=50'

PHASE II PROFILE OF
 8" & 12" WATER
 CONTRACT NO. 14-1827-D

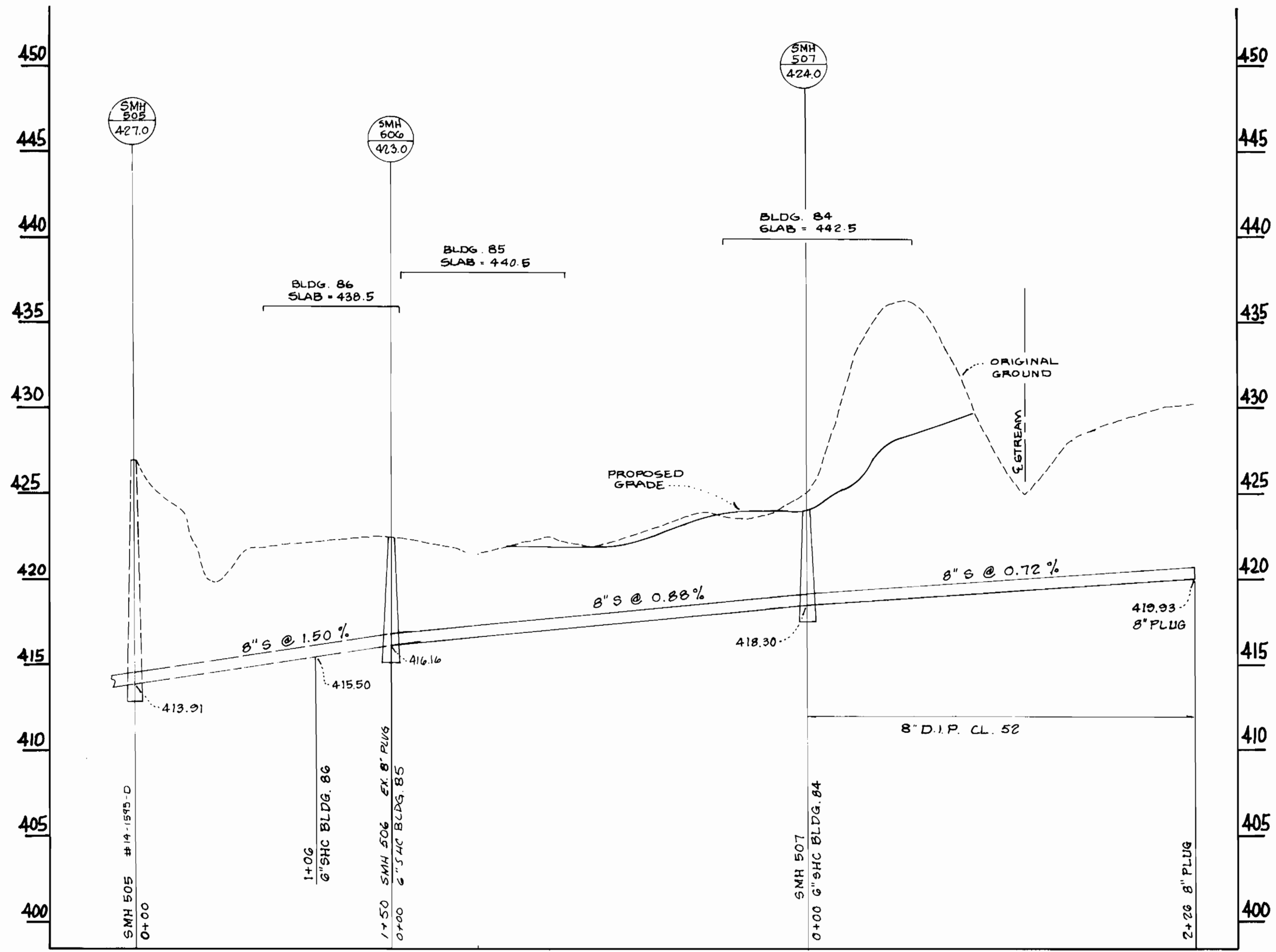
VILLAGE OF MONTGOMERY RUN
 TAX MAP 31 & 37 PARCELS "I", "J", "K", OPEN SPACE LOTS 1 & 2

1st ELECTION DISTRICT HOWARD COUNTY, MD.

SCALE AS SHOWN

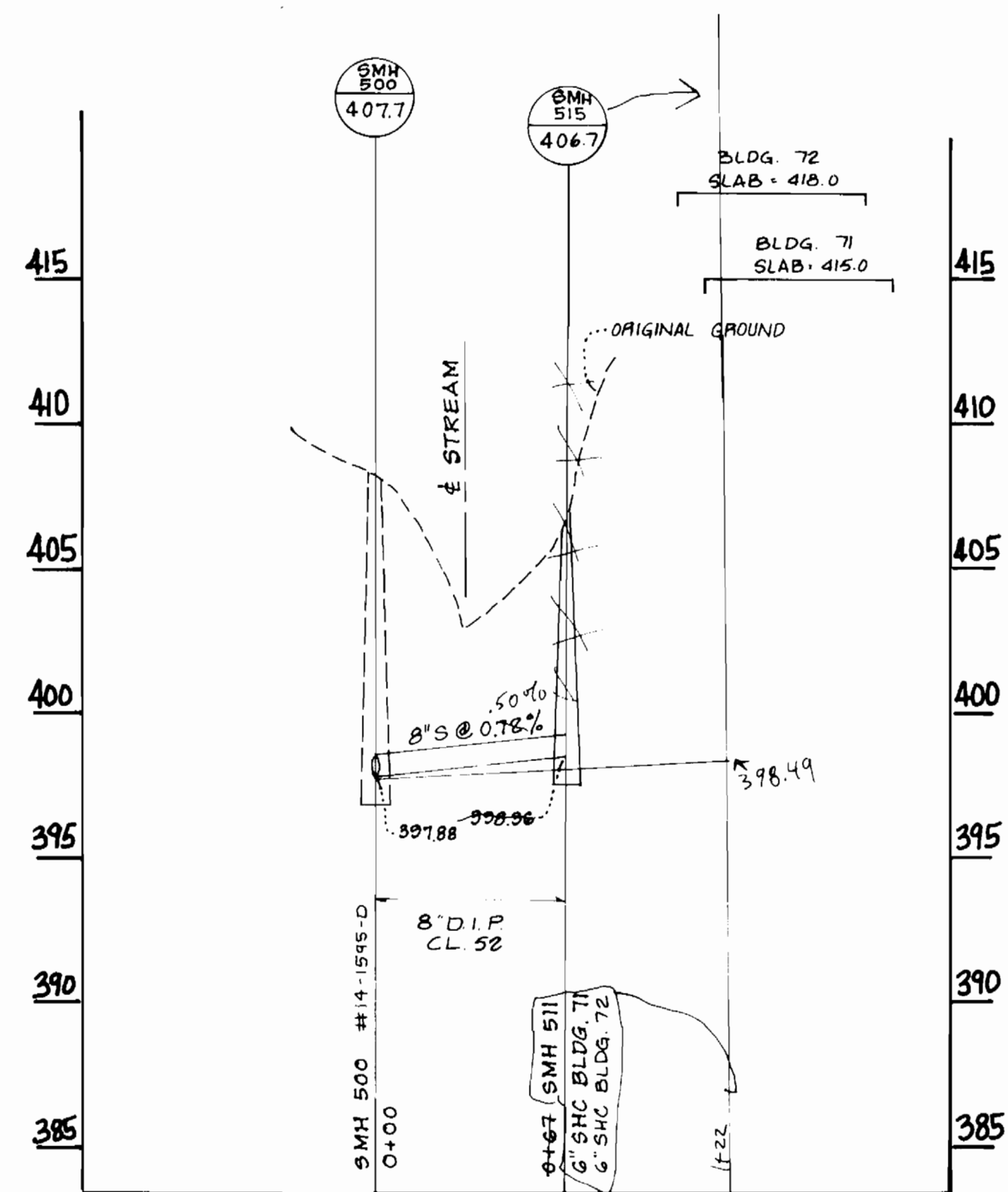
SHEET 7 OF 9

AS-BUILT 1/18/90



PROFILE SEWER LINE 'C'

SCALE: HORIZ. 1"=50'
VERT. 1"=5'

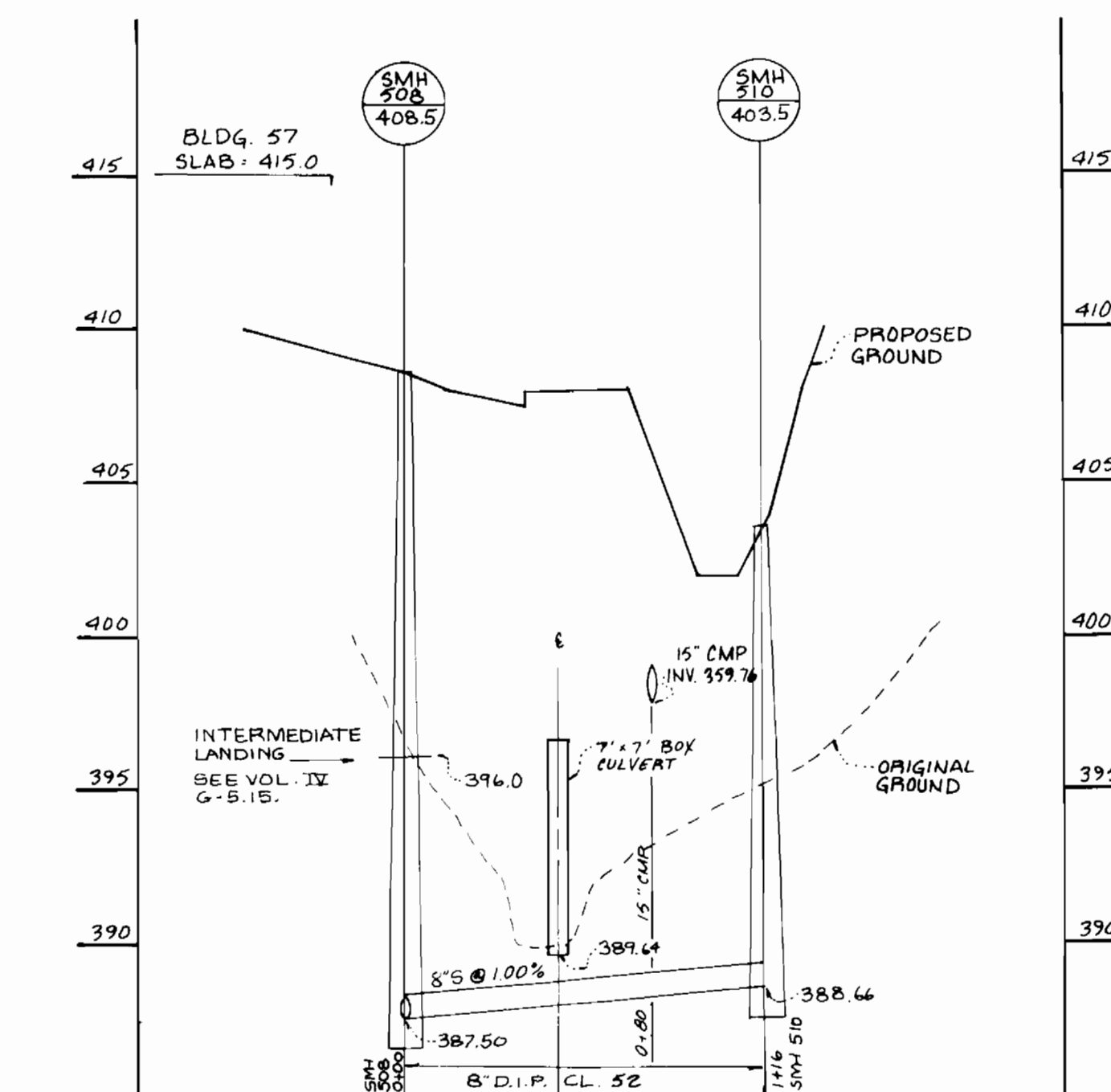


PROFILE SEWER LINE 'B'

SCALE: HORIZ. 1"=50'
VERT. 1"=5'

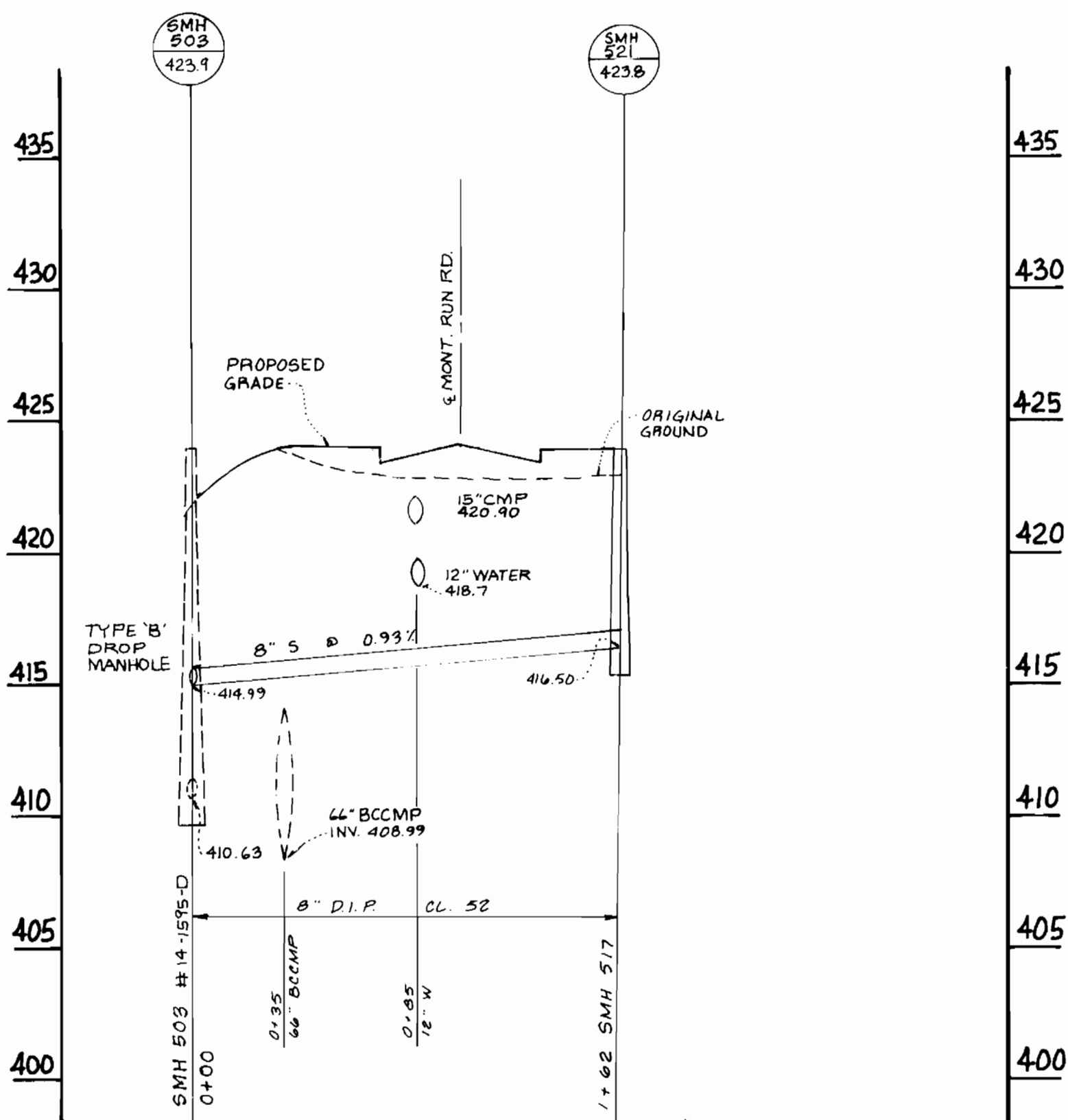
PUBLIC SEWER PROFILES

SCALE: VERT. 1"=5'
HORIZ. 1"=50'



PROFILE SEWER LINE 'A'

SCALE: HORIZ. 1"=50'
VERT. 1"=5'



PROFILE SEWER LINE 'D'

SCALE: VERT. 1"=5'
HORIZ. 1"=50'

DEPARTMENT OF PUBLIC WORKS
HOWARD COUNTY, MARYLAND

James J. Lewis, Director of Public Works, dated 10/3/88
 William E. Riley, Chief of Bureau of Engineering, dated 10/4/88
 John J. Sumner, Chief of Bureau of Utilities, dated 10/3/88
 Paul D. Johnson, Chief of Land Development Div., dated 10/4/88



DES:	
DRN:	
CHK:	
DATE:	5/18/90
BY:	
NO.:	
REVISION:	
DATE:	

PHASE II PROFILE OF

8" SANITARY SEWER
CONTRACT NO. 14-1827-D

VILLAGE OF MONTGOMERY RUN
TAX MAP 31437 PARCELS 'I', 'J', 'K', OPEN SPACE LOTS 1 & 2

1st ELECTION DISTRICT HOWARD COUNTY, MD.

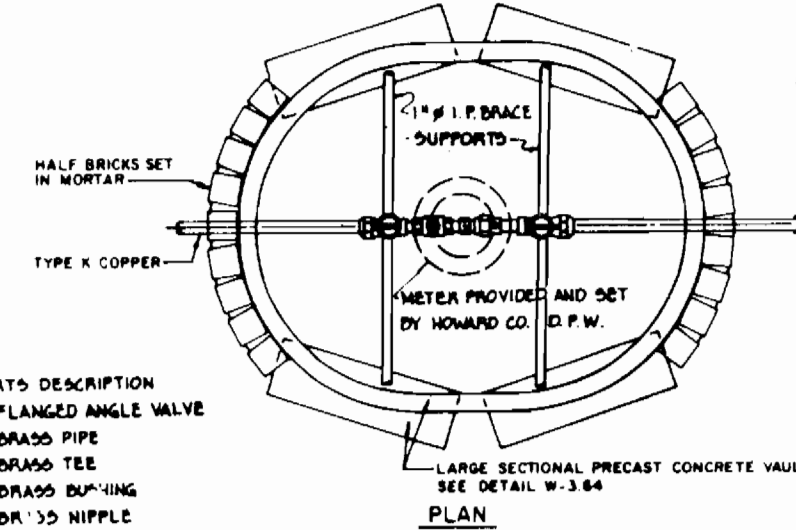
SCALE AS SHOWN

SHEET 8 OF 9

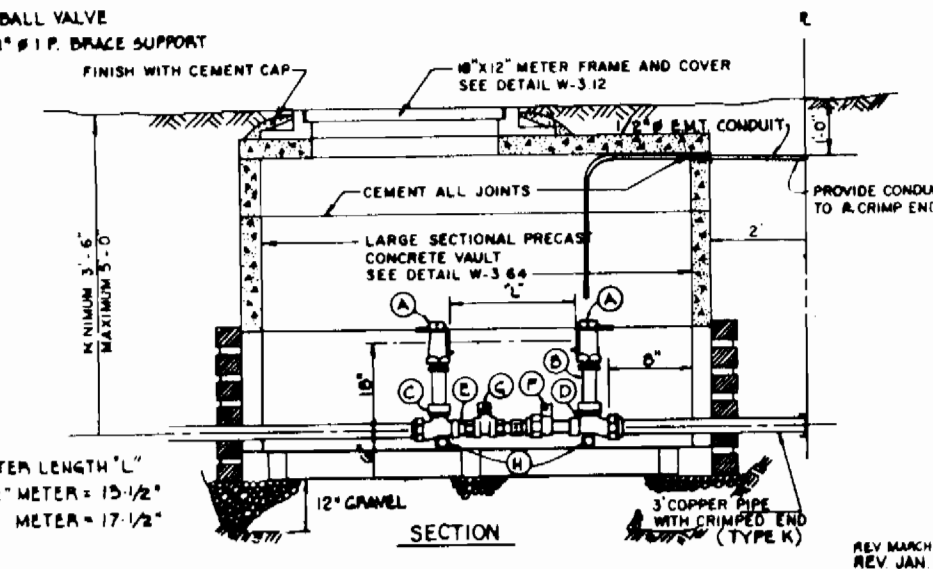
AS-BUILT

1/18/90

NOTED: 1. ALL FITTINGS TO BE BRASS.
 2. CONTRACTOR TO PROVIDE A W.G. 1/2" COPPER THERMOSTAT OR BELL WIRE FOR REMOTE READOUT.
 3. FOR CONNECTION TO WATER MAIN-SEE STANDARD DETAIL W.3.E1 AND W.3.E.2.



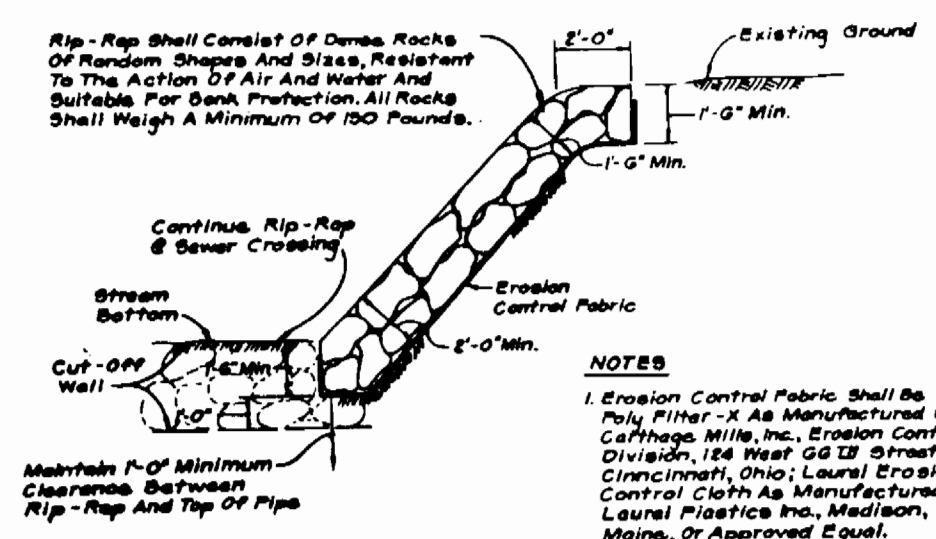
- PARTS DESCRIPTION
- A. FLANGED ANGLE VALVE
 - B. BRASS PIPE
 - C. BRASS TEE
 - D. BRASS HOPIPING
 - E. DR. 3/8\"/>
 - F. PACK JOINT COUPLING
 - G. BALL VALVE
 - H. 1/2\"/>



HOWARD COUNTY, MARYLAND
 DEPARTMENT OF PUBLIC WORKS
 APPROVED: *[Signature]*
 Chief, Bureau of Engineering

STANDARD WATER DETAILS
 STANDARD INSTALLATION FOR
 1/2" & 2" OUTSIDE METER
 SETTINGS

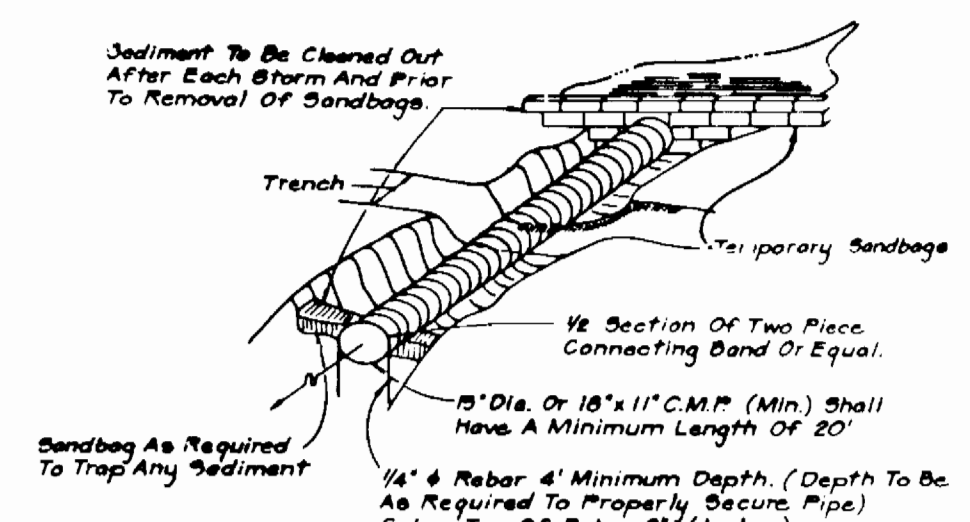
REV. MARCH 1986
 REV. JAN 1985
 REV. OCT 1982
 DRAWN BY: *[Signature]*
 CHECKED BY: *[Signature]*
 NO SCALE
 W.3.34



RIP-RAP DETAIL
 Not To Scale

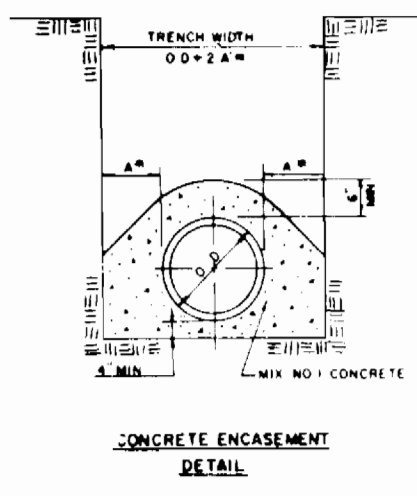
NOTES

1. Erosion Control Fabric shall be Poly Filter-X As Manufactured By Calfaggs Mills, Inc., Erosion Control Division, 184 West 58th Street, Cincinnati, Ohio; Laurel Erosion Control Cloth As Manufactured By Laurel Plastics Inc., Madison, Maine, Or Approved Equal.
2. Rip-Rap shall be Placed @ Each Side @ Sewer Or As Shown. Any Disturbance To Stream Banks Beyond Limits Shown shall Be Protected With Rip-Rap At Contractor's Expense.

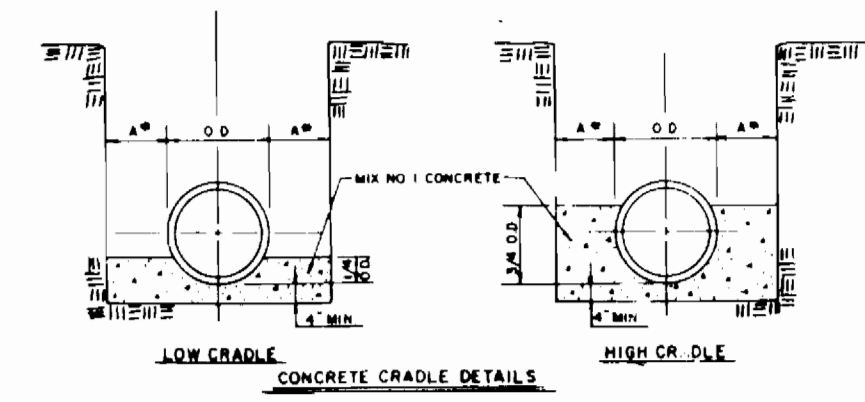


SOIL CONSERVATION MEASURES AT SMALL STREAM CROSSING
 Not To Scale

NOMINAL PIPE DIAMETER	MAXIMUM PERMITTED CO. FT. PER LINE FT.		CONCRETE ENCASUREMENT
	LOW	HIGH	
6"	0.80	1.88	1.53
8"	1.03	1.88	2.22
10"	1.22	1.88	2.85
12"	1.51	2.33	3.63
15"	1.73	2.87	4.50
18"	2.33	4.02	5.71
21"	2.42	4.32	6.35
24"	3.34	5.85	8.22
27"	3.70	6.38	8.94
30"	4.18	7.42	9.83
33"	5.08	8.67	12.14
36"	5.65	10.53	13.09
42"	6.44	12.70	17.22
48"	8.40	16.25	24.83
54"	9.84	18.46	29.97
60"	10.95	20.80	34.89
66"	12.25	23.08	41.71



FOR VALUES OF 'X' SEE DETAIL 6.2.D



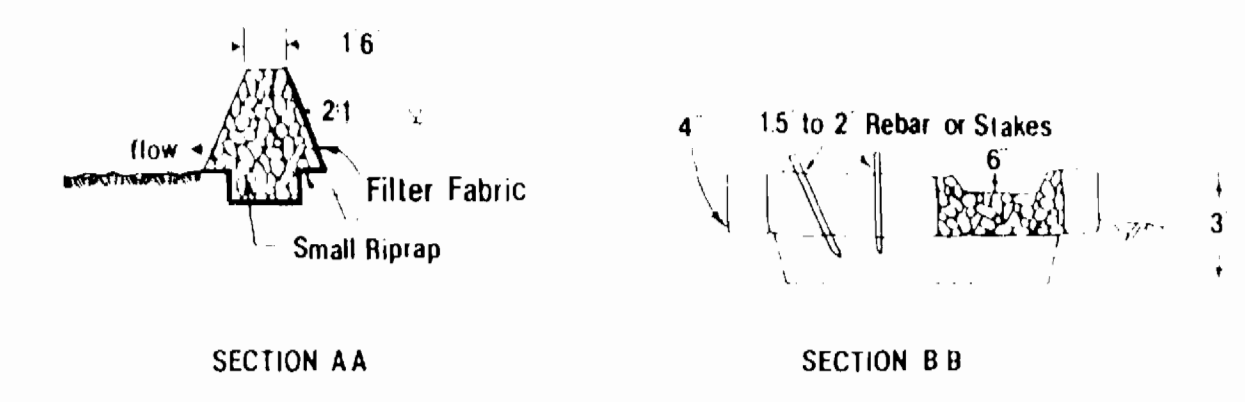
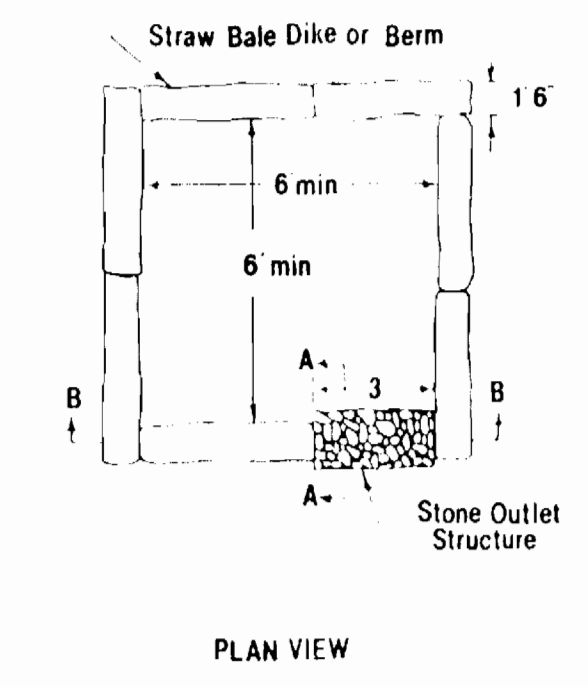
NOTES

1. POUR CONCRETE TO UNDISTURBED EARTH. REMOVE SHEETING BEFORE POURING CONCRETE OR LEAVE LOWER PORTION OF SHEETING IN PLACE.
2. WHEN USING SOLID SHEETING OR TRENCH SHIELDS, X WALL NOT EXCEED 30\"/>

HOWARD COUNTY, MARYLAND
 DEPARTMENT OF PUBLIC WORKS
 APPROVED: *[Signature]*
 Chief, Bureau of Engineering

CONCRETE ENCASUREMENT AND CRADLE DETAILS

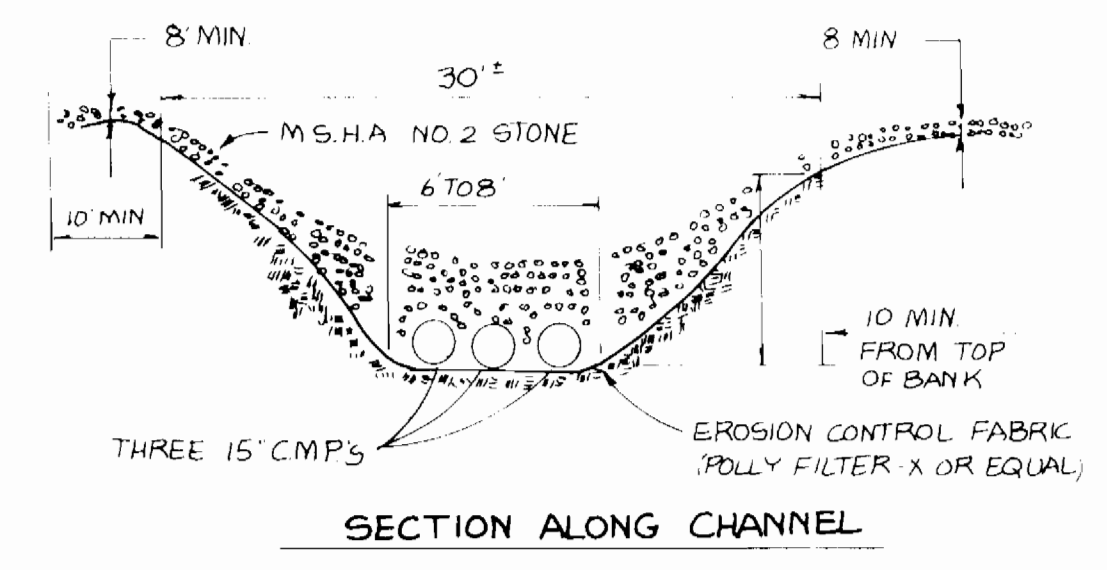
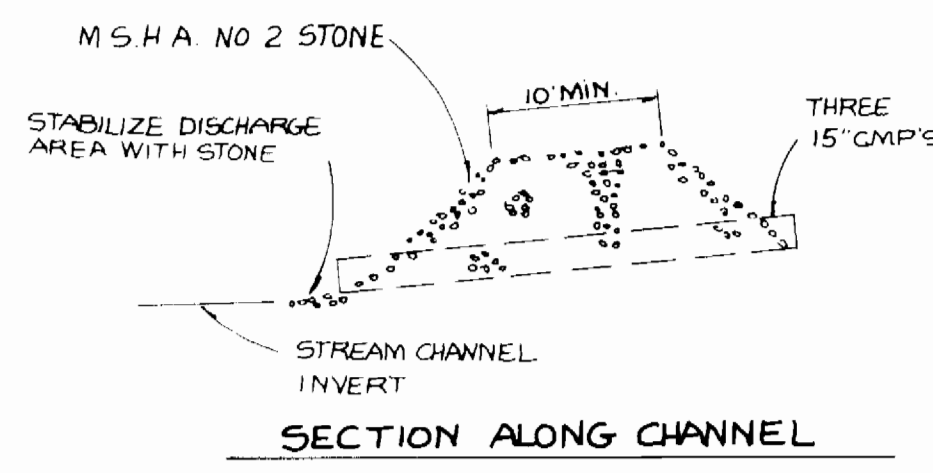
REV. JULY 1986
 CHECKED BY: *[Signature]*
 DATE: 6-17-86



DETAIL PER WATER RESOURCES DIV DETAILS WPD.1.1

DEWATERING BASIN

NO SCALE



STABILIZED STREAM BED CROSSING
 FOR TEMPORARY ACCESS
 NOT TO SCALE

SEQUENCE OF CONSTRUCTION FOR SEDIMENT CONTROL

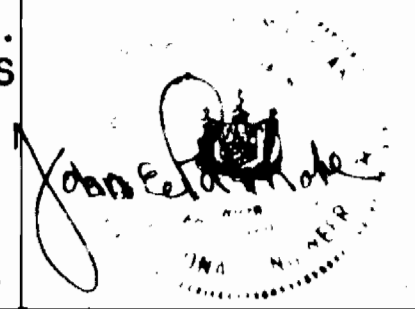
1. INSTALL ALL SEDIMENT CONTROL DEVICES INCLUDING SILT FENCE, STREAM CROSSING AND DEWATERING DEVICES.
2. INSTALL ALL UTILITIES PER PLAN.
3. SEED & MULCH ALL DISTURBED AREAS PER SECTION 15 OF THE HO. CO. STD. DESIGN MANUAL NO. IX.
4. WITH APPROVAL OF SEDIMENT CONTROL INSPECTOR REMOVE ALL SEDIMENT CONTROL DEVICES.

DEPARTMENT OF PUBLIC WORKS
 HOWARD COUNTY, MARYLAND

[Signature] 10/5/88
 Robert W. Deinger
 CHIEF, BUREAU OF UTILITIES

[Signature] 10-4-88
 John E. C. Patmore
 CHIEF, LAND SURVEYING DIV.

KIDDE CONSULTANTS INC.
 ENGINEERS, PLANNERS & SURVEYORS
 100 WEST STREET / SUITE 100
 LAUREL, MD. 20707
 (301) 792-8086 (301) 953-1821
 JOHN E. C. PATMORE MD P.E. No. 8978



PHASE II DETAIL SHEET
 12" & 8" WATER
 8" SANITARY SEWER
 CONTRACT NO. 14-1827-D

VILLAGE OF MONTGOMERY RUN
 TAX MAP 31 & 37 PARCELS "I", "J", "K", OPEN SPACE LOTS 1 & 2
 1st ELECTION DISTRICT HOWARD COUNTY, MD.

SCALE AS SHOWN
 SHEET 9 OF 9