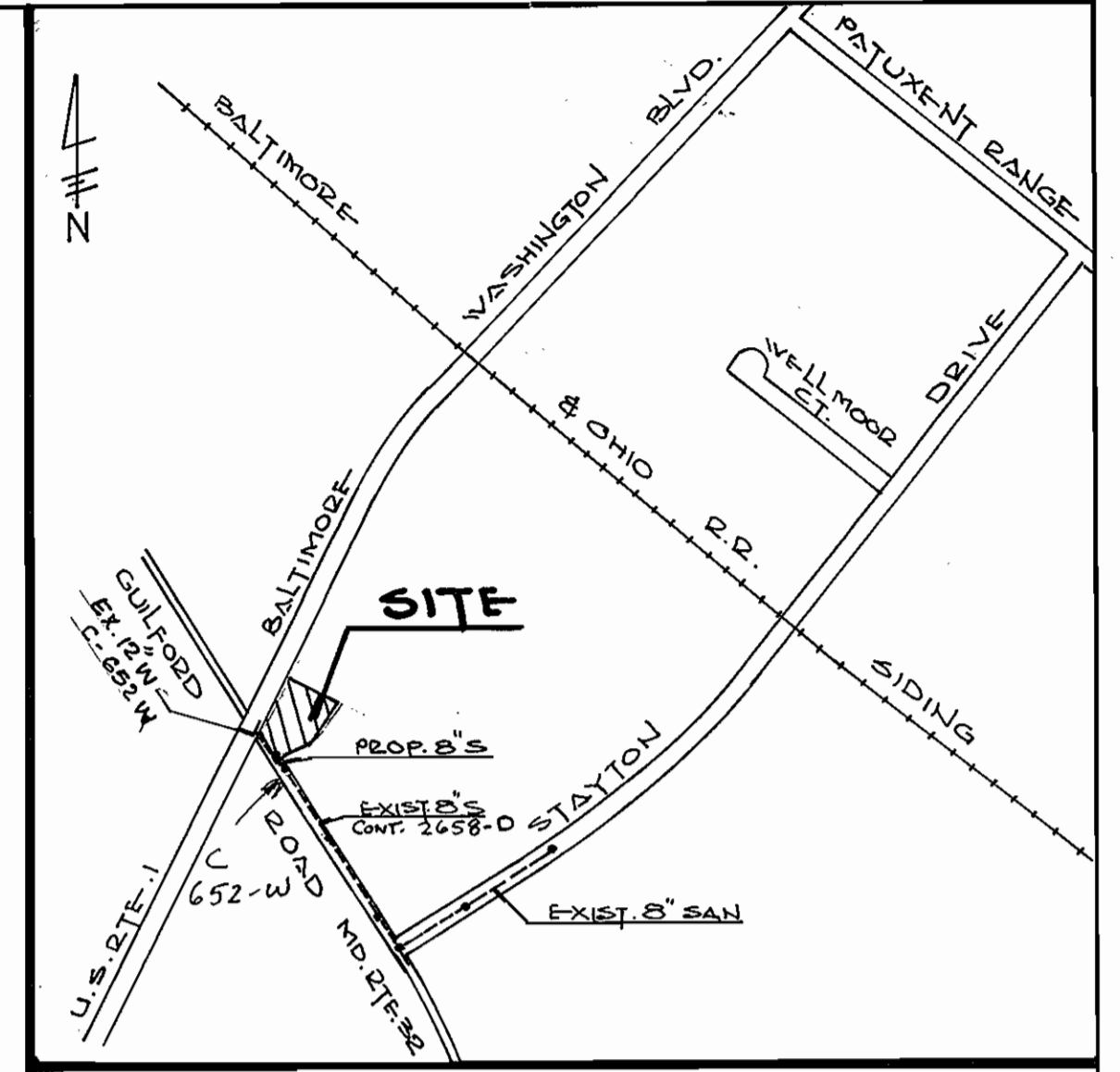


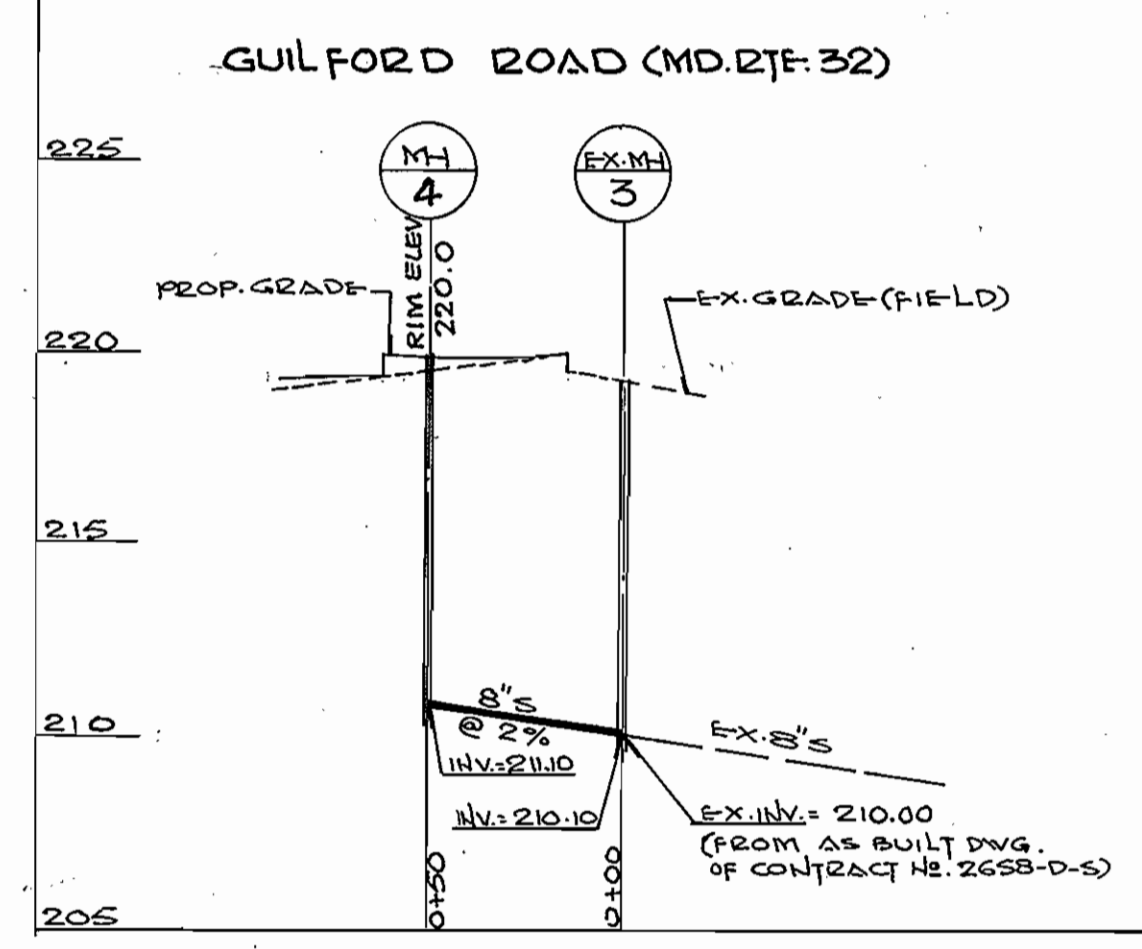
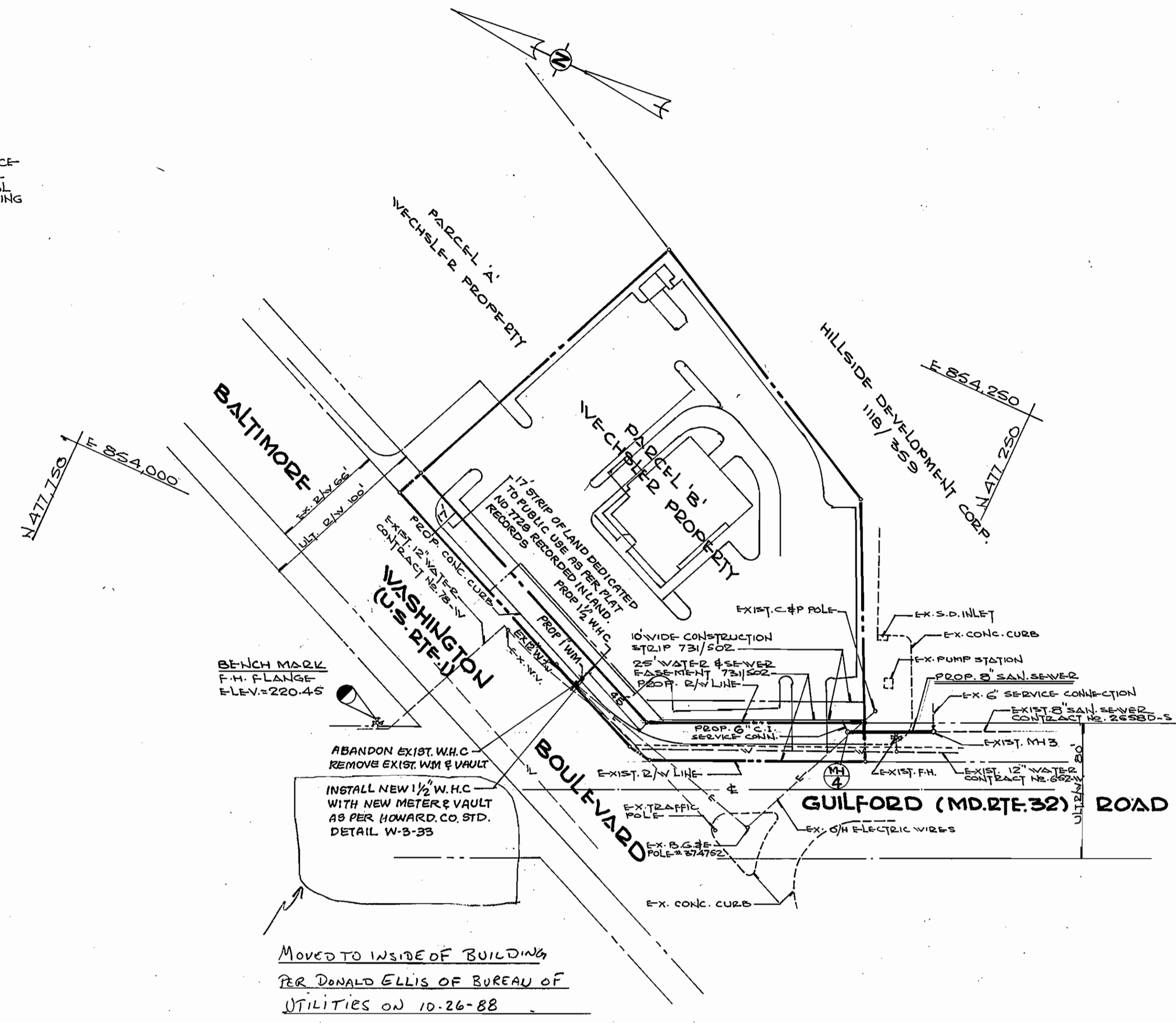
GENERAL NOTES

- APPROXIMATE LOCATION OF EXISTING MAINS ARE SHOWN. THE CONTRACTOR SHALL TAKE ALL NECESSARY PRECAUTIONS TO PROTECT EXISTING MAINS AND SERVICES AND MAINTAIN UNINTERRUPTED SUPPLY. ANY DAMAGE INCURRED SHALL BE REPAIRED IMMEDIATELY TO THE SATISFACTION OF THE ENGINEER, AT THE CONTRACTOR'S EXPENSE.
- ALL HORIZONTAL & VERTICAL CONTROLS ARE BASED ON HOWARD COUNTY CONTROL STATIONS 2043003 & 2043002.
- ALL PIPE ELEVATIONS SHOWN ARE INVERT ELEVATIONS.
- CLEAR ALL UTILITIES BY A MINIMUM OF 6'. CLEAR ALL POLES BY 2' MINIMUM OR TUNNEL AS REQUIRED.
- FOR DETAILS NOT SHOWN ON THE DRAWINGS, AND FOR MATERIALS AND CONSTRUCTION METHODS, USE HOWARD COUNTY DESIGN MANUAL VOLUME IV, STANDARD SPECIFICATIONS AND DETAILS FOR CONSTRUCTION. THE CONTRACTOR SHALL HAVE A COPY OF VOLUME IV ON THE JOB.
- CONTRACTOR SHALL NOTIFY THE FOLLOWING UTILITIES OR AGENCIES AT LEAST FIVE WORKING DAYS BEFORE STARTING WORK SHOWN ON THESE PLANS.
 - STATE HIGHWAY ADMINISTRATION : 531-5533
 - BALTIMORE GAS & ELECTRIC CO. : 561-2585, CONTRACT SERVICE
 - BALTIMORE GAS & ELECTRIC CO. : 234-5621, UNDERGROUND
 - BALTIMORE GAS & ELECTRIC CO. : 238-9013, DAMAGE CONTROL
 - MISS UTILITY : 1-553-0100
 - COLONIAL PIPE-LINE CO. : 795-1390
 - BUREAU OF UTILITIES, HOWARD COUNTY, DEPARTMENT OF PUBLIC WORKS : 992-2366
- TREES AND SHRUBS ARE TO BE PROTECTED FROM DAMAGE TO MAXIMUM EXTENT. TREES AND SHRUBS LOCATED WITHIN THE CONSTRUCTION STRIP ARE NOT TO BE REMOVED OR DAMAGED BY THE CONTRACTOR.
- CONTRACTOR SHALL REMOVE TREES, STUMPS AND ROOTS ALONG LINE OF EXCAVATION.
- ALL SEWER MAINS SHALL BE C.S.P.X., D.I.P., V.C.P.X., A.C.P. CLASS 2400 OR PVC UNLESS OTHERWISE NOTED.
- ALL MANHOLES SHALL BE 4'-0" INSIDE DIAMETER UNLESS OTHERWISE NOTED.
- STRAW BALE DIKES AND SILT FENCES ARE INTERCHANGEABLE.
- WHERE TEST PITS HAVE BEEN MADE ON EXISTING UTILITIES, THEY ARE NOTED BY THE SYMBOL AT THE LOCATION OF THE TEST PIT. A NOTE OR NOTES CONTAINING THE RESULTS OF THE TEST PIT OR PITS IS INCLUDED ON THE DRAWINGS. EXISTING UTILITIES IN THE VICINITY OF THE PROPOSED WORK FOR WHICH TEST PITS HAVE NOT BEEN DUG SHALL BE LOCATED BY THE CONTRACTOR TWO WEEKS IN ADVANCE OF CONSTRUCTION OPERATIONS AT HIS OWN EXPENSE.



VICINITY MAP
SCALE: 1" = 600'

WATER CODE: B02 SEWER CODE: 4201200
TYPE OF BLDG: COMMERCIAL NO. OF LOTS: 1
NO. OF SHC: 1 NO. OF W.H.C: 1
DRAINAGE AREA: LITTLE PATUXENT



PROFILE

SCALE: HORIZ: 1" = 50'
VERT: 1" = 5'

PLAN

SCALE: 1" = 50'

BENCH MARK: FLANGE ON FIRE-HYDRANT IN THE NW CORNER OF RTE. 1 & RTE 32 INTERSECTION. ELEVATION = 220.45

SUBDIVISION NAME		SECT / AREA	LOT / PARCEL
WECHSLER PROPERTY SUBDIVISION		N.A.	PARCEL B
HARDEE'S			
PLAT #	LIF	BLOCK / ZONE	TAX MAP
7728	213/213	1 M-2	48
WATER CODE: B02		SEWER CODE: 425 0000	

QUANTITIES			
ITEM	BID	AS-BUILT	MATERIAL/SUPPLIER
8" SAN. SEWER MH	EA	1	CONC. PRODUCTS OF AMERICA - PRECAST
8" SAN. SEWER LF.	50	46'	PVC, NATIONAL PIPE VESTAL, NEW YORK
1" METER VAULT	1	1	

HARDEE'S OF JESSUP, MD
HARDEE'S FOOD SYSTEMS, INC.
122 DEFENSE HIGHWAY
ANNAPOLIS, MD. 21401
TEL (301) 266-6121

REVIEWED FOR HOWARD S.C.D. AND MEETS TECHNICAL REQUIREMENTS.
[Signature] 4-13-88
U.S. SOIL CONSERVATION SERVICE

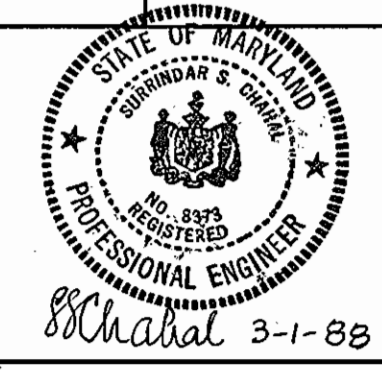
THIS DEVELOPMENT PLAN IS APPROVED FOR SOIL EROSION AND SEDIMENT CONTROL BY THE HOWARD SOIL CONSERVATION DISTRICT.
[Signature] 4/13/88
HOWARD S.C.D.

SEDIMENT CONTROL MEASURES FOR THIS CONTRACT WILL BE IMPLEMENTED IN ACCORDANCE WITH SECTION 219 OF THE STANDARD SPECIFICATION AND FINAL PLANS SDP-88-74

BEFORE BEGINNING CONSTRUCTION, CONTACT "MISS UTILITY" AT 1-800-257-7777 AT LEAST 48 HOURS PRIOR TO CONSTRUCTION.

DEPARTMENT OF PUBLIC WORKS
HOWARD COUNTY, MARYLAND
James M. Lewis, Director of Public Works, 4-11-88
M. H. H., Chief, Bureau of Engineering, 4-11-88
M. H. H., Chief, Land Development Division, 4-11-88

APEX ENGINEERING, INC.
ENGINEERS PLANNERS SURVEYORS
110 OLD SOLOMONS ISLAND RD.
ANNAPOLIS, MARYLAND, 21401
(301) 841-6737



DES: S.S.C.	
DRN: G.S.G.	
CHK: S.S.C.	
DATE: 3-1-88	
BY: APEX	NO. 1
REVISED CONTRACT NO FROM 24-1794-D TO 24-1794-D ADDED 1 1/2" W.H.C. & 1" METER AND VAULT	
REVISION	7-22-88

PLAN FOR SEWER MAIN EXTENSION

WECHSLER PROPERTY
PARCEL B
CONTRACT NO. 24-1794-D
TAX MAP 48 BLOCK 1 PARCEL 82
6TH. ELECTION DISTRICT
HOWARD COUNTY, MARYLAND

SCALE AS SHOWN
SHEET 1 OF 1