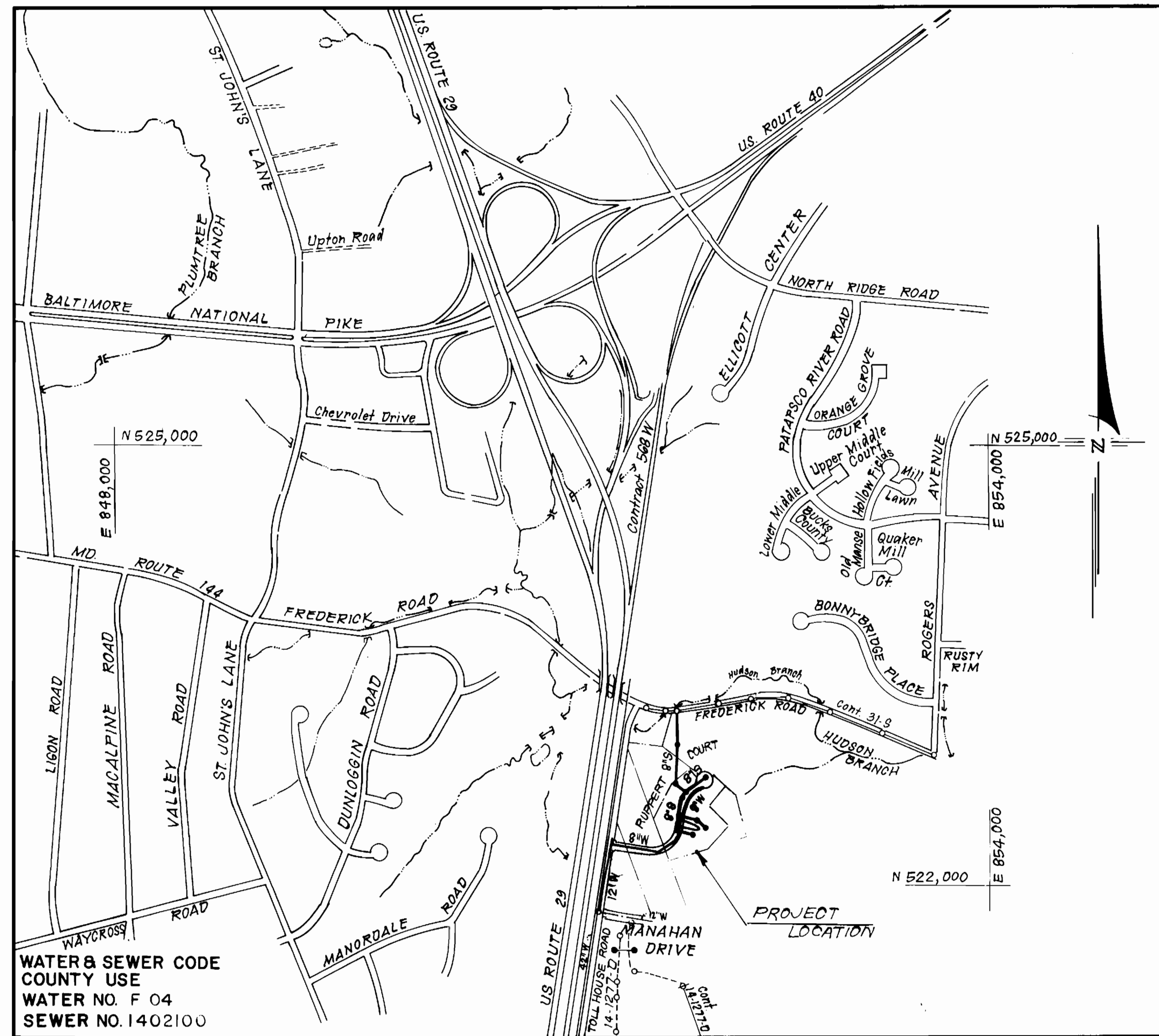


SEWER HOUSE CONNECTION TABLE					
LOTS	Inv. Ft.	Min. C.	LOTS	Inv. Ft.	Min. C.
1/2	369.5	372.9	21/22	361.0	364.3
3/4	367.1	370.5	23/24	359.3	362.7
5/6	363.5	367.0	25/26	365.7	368.8
7/8	362.7	366.1	27/28	367.0	370.0
9/10	361.5	364.9	29/30	369.3	372.4
11	360.3	363.6	31/32	370.7	373.8
12	359.6	362.9	33/34	370.8	373.9
13/14	360.1	363.1	35/36	373.2	376.2
15/16	361.5	364.5	37/38	372.4	375.8
17/18	364.9	367.9	39/40	371.2	374.6
19/20	363.9	366.9			

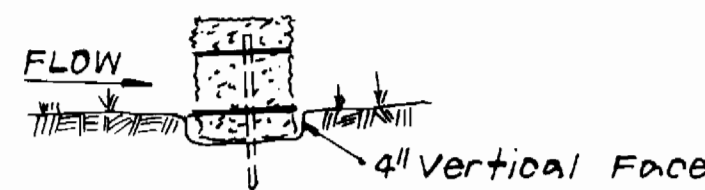
TYPE OF BUILDING	Townhouses & Ex House
NO OF LOTS	41
NO OF WHC'S	41
NO OF SHC'S	41
DRAINAGE AREA	Potapoco W.W.T.P.



VICINITY MAP
SCALE: 1" = 600'

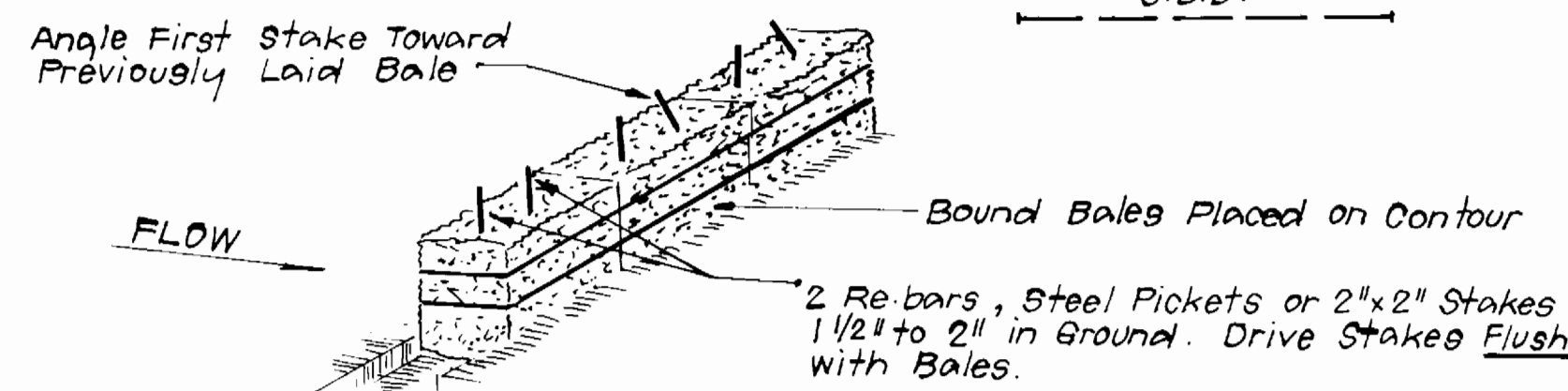
GENERAL NOTES

- Approximate location of existing mains are shown. The contractor shall take all necessary precautions to protect existing mains and services and maintain uninterrupted supply. Any damage incurred shall be repaired immediately to the satisfaction of the inspector, at the contractor's expense.
- All horizontal controls are based on Maryland State Coordinates.
- All vertical controls are based on U.S.G.S. Datum.
- All pipe elevations shown are invert elevations.
- Clear all utilities by a minimum of 6" clear all poles by 2'-0" minimum or tunnel as required. Any cost incurred to the contractor for tunneling or bracing at poles shall be included in unit prices bid for excavation and backfill.
- For details not shown on the drawings use Howard County Standard Details.
- For materials and construction methods use Howard County Standard Specifications & Ho. Co. Design Manual, Volume IV. The Contractor shall have it on the job.
- Contractor shall locate existing utilities a minimum of two (2) weeks in advance of construction operations in the vicinity of proposed utilities at his own expense.
- Contractor shall notify the following utilities or agencies at least five (5) working days before starting work shown on these plans.
 State Highway Administration - 531-5533
 Baltimore Gas & Electric Company - Contractor Services - 850-4620.
 Baltimore Gas & Electric Company - Underground Damage Control - 859-9004.
 Baltimore Gas & Electric Company - Trouble Shooting - 298-9001
 "Miss Utility" - 1-800-257-7777
 Chesapeake & Potomac (C & P) Telephone Company - 1-800-257-7777
 Colonial Pipeline Company - 795-1380
 Bureau of Utilities Howard County - 992-2366
- Trees are to be protected from damage to maximum extent. Trees located within the construction strip are not to be removed or damaged by the contractor.
- Contractor shall remove trees, stumps, and roots along line of excavation as directed by the inspector. Payment for such removal shall be included in the unit price bid for excavation and backfill.
- Place regulation "Men Working" and warning signs as required to comply with Maryland State Highway Administration Manual of Traffic Control for Highway Construction and Maintenance Operations.
- All water mains to be Ductile Iron Pipe C152 unless otherwise noted.
- Top of all water mains to have a minimum of 3'-1/2' cover unless otherwise noted.
- Valves adjacent to tees shall be strapped to tees.
- Block all fittings with concrete.
- Bury line elevations on fire hydrants shall be set to the elevations shown on the drawings. All fire hydrants shall be strapped and buttressed with concrete in accordance with standard details. Soil around the fire hydrant to be compacted in accordance with Section 1003.1008 of the Standard Specifications.
- All water house connections shall be for an inside meter setting.
- The contractor shall not operate any water main valves on the existing system.
- All sewer mains shall be C.S.P.X., V.C.P.X., P.V.C., or A.C.P. Class 2400 unless otherwise noted.
- The contractor shall provide a joint in all sewer mains within 2'-0" of exterior manhole wall.
- All manholes shall be 4'-0" inside diameter, unless otherwise noted.
- Water main and water house connection lines must have a minimum of one foot separation from the sanitary sewer and sewer house connections as they cross. Except at crossings, water and sewer lines shall have a minimum horizontal separation of 10'.
- All DIP fittings shall be in accordance with AWWA specification C-153 Ductile Iron Compact Fittings, 3" through 12" for water and other liquids.



BEDDING DETAIL

STANDARD SYMBOL
S.B.D.



ANCHORING DETAIL

STRAW BALE DIKE
NO SCALE

Sediment Control Measures will be implemented in accordance with Section 219 of the Specifications & with Road Construction Plan F-89-226; Drawing, Sediment & Erosion Control.

REVIEWED FOR HOWARD SOIL CONSERVATION DISTRICT AND MEETS TECHNICAL REQUIREMENT.

James M. ...
SIGNATURE DATE 10/31/88

U.S. SOIL CONSERVATION SERVICE

This Development Plan is approved for Soil Erosion and Sediment Control by the Howard Soil Conservation District.

APPROVED:
Stephen J. ...
HOWARD S.C.D. DATE

CONTRACT NO. 14-1792-D

RUPPERT PROPERTY
LOTS 1 THRU 48

HOWARD COUNTY, MARYLAND
DEPARTMENT OF PUBLIC WORKS

AS BUILT
DRAWING FOR
WATER & SEWER

QUANTITIES			
ITEM	EST'D	AS BUILT	MATERIAL / SUPPLIER
12" W	489 LF	490	MUNICIPAL & CONTRACTOR SALES, INC.
8" W	987 LF	985	" "
6" W	363 LF	364	" "
8" S	1,307 LF	1,312 LF	MANUFAC. HUNTER
6" SHC	835 LF	835 LF	" "
1" WHC	340 LF	412	" "
3/4" WHC	775 LF		" "
FH	3 EA	3 EA	1-KENNEDY 2" M & H VALVE CO.
4" DIA MH	10 EA	10 EA	" "
12" V	1 EA	1 EA	MUNICIPAL & CONTRACTOR SALES, INC.
8" V	2 EA	2 EA	" "
6" V (excl. FH)	2 EA	2 EA	" "
12" x 12" V	1 EA	1 EA	" "

DEPARTMENT OF PUBLIC WORKS
HOWARD COUNTY, MARYLAND

James M. ... 11/3/88
DIRECTOR OF PUBLIC WORKS DATE
Robert ... 10-27-88
CHIEF, BUREAU OF UTILITIES DATE
... 10/31/88
CHIEF, LAND DEVELOPMENT DIV. DATE

CFS CLARK - FINEPROCK & SACKETT
ENGINEERS - PLANNERS - SURVEYORS
7135 MINSTREL WAY COLUMBIA MARYLAND 21045
(301) 381-7500 BALTO. (301) 621-8100 WASH.



DES:				
DRN:				
CHK:				
DATE:	JTR	1	Rev. quantity of 6" SHC on Quantities Chart	3-15-88
BY NO.			REVISION	DATE

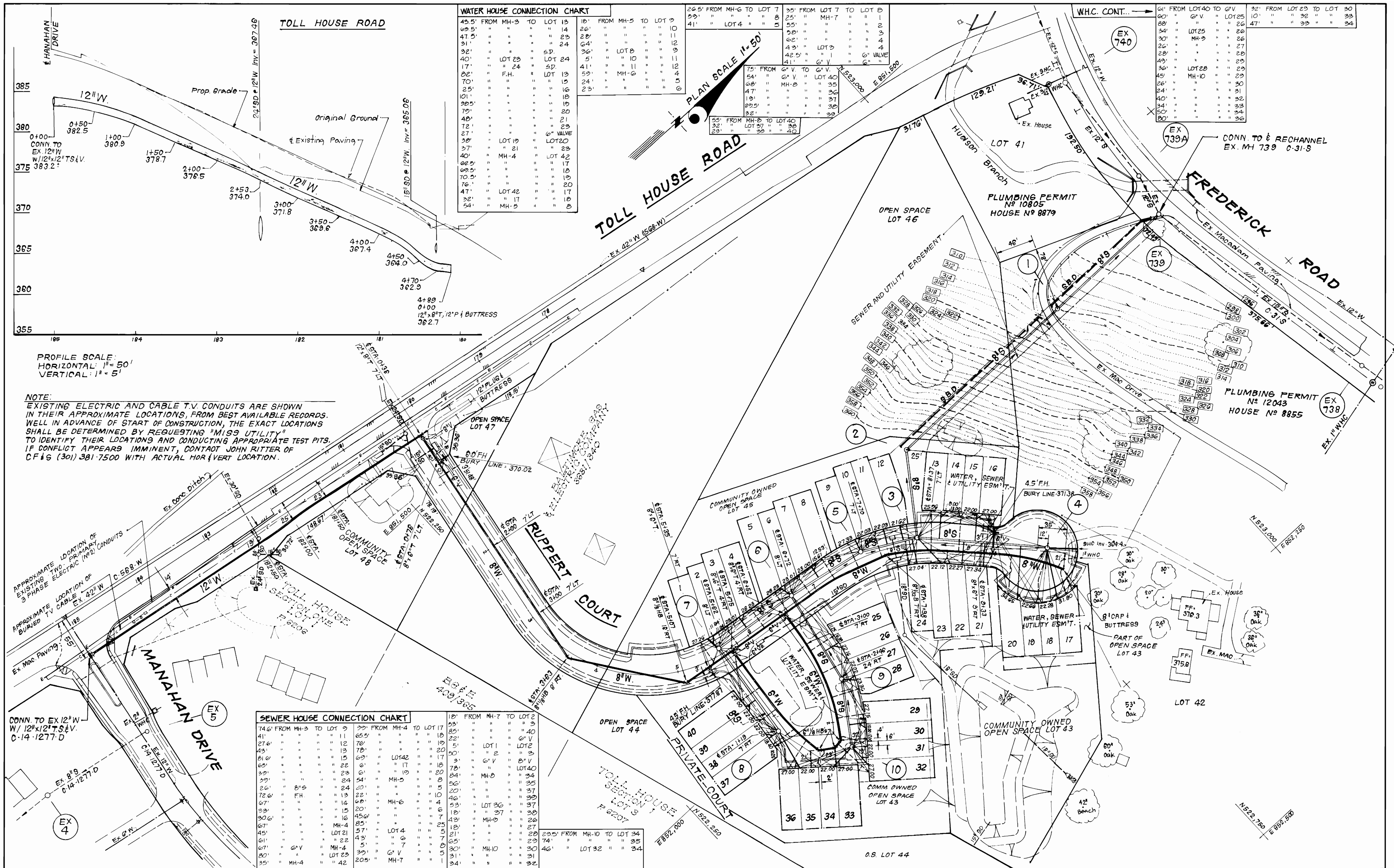
TITLE SHEET

600' SCALE MAP NO. 24 BLOCK NO.

RUPPERT PROPERTY
LOTS 1 THRU 48
2nd ELECTION DISTRICT
CONTRACT NO. 14-1792-D

SCALE AS SHOWN

SHEET 1 OF 3



WATER HOUSE CONNECTION CHART

45.5' FROM MH-3 TO LOT 13	16' FROM MH-5 TO LOT 9	26.5' FROM MH-6 TO LOT 7	35' FROM LOT 7 TO LOT 8
47.5' " " " " " " " " " "	26' " " " " " " " " " "	29' " " " " " " " " " "	25' " " MH-7 " " " " " "
31' " " " " " " " " " "	64' " " " " " " " " " "	41' " " LOT 4 " " " " " "	55' " " " " " " " " " "
32' " " " " " " " " " "	5' " " " " " " " " " "	43' " " " " " " " " " "	42' " " " " " " " " " "
40' " " " " " " " " " "	5' " " " " " " " " " "	42' " " " " " " " " " "	41' " " " " " " " " " "
17' " " " " " " " " " "	41' " " " " " " " " " "	54' " " " " " " " " " "	54' " " " " " " " " " "
70' " " " " " " " " " "	24' " " " " " " " " " "	68' " " " " " " " " " "	68' " " " " " " " " " "
25' " " " " " " " " " "	23' " " " " " " " " " "	47' " " " " " " " " " "	47' " " " " " " " " " "
30.5' " " " " " " " " " "	19' " " " " " " " " " "	19' " " " " " " " " " "	19' " " " " " " " " " "
79' " " " " " " " " " "	20' " " " " " " " " " "	32' " " " " " " " " " "	32' " " " " " " " " " "
48' " " " " " " " " " "	21' " " " " " " " " " "	55' " " " " " " " " " "	55' " " " " " " " " " "
72' " " " " " " " " " "	22' " " " " " " " " " "	32' " " " " " " " " " "	32' " " " " " " " " " "
27' " " " " " " " " " "	23' " " " " " " " " " "	23' " " " " " " " " " "	23' " " " " " " " " " "
37' " " " " " " " " " "	23' " " " " " " " " " "	23' " " " " " " " " " "	23' " " " " " " " " " "
40' " " " " " " " " " "	23' " " " " " " " " " "	23' " " " " " " " " " "	23' " " " " " " " " " "
68.5' " " " " " " " " " "	23' " " " " " " " " " "	23' " " " " " " " " " "	23' " " " " " " " " " "
70.5' " " " " " " " " " "	23' " " " " " " " " " "	23' " " " " " " " " " "	23' " " " " " " " " " "
76' " " " " " " " " " "	23' " " " " " " " " " "	23' " " " " " " " " " "	23' " " " " " " " " " "
47' " " " " " " " " " "	23' " " " " " " " " " "	23' " " " " " " " " " "	23' " " " " " " " " " "
54' " " " " " " " " " "	23' " " " " " " " " " "	23' " " " " " " " " " "	23' " " " " " " " " " "

SEWER HOUSE CONNECTION CHART

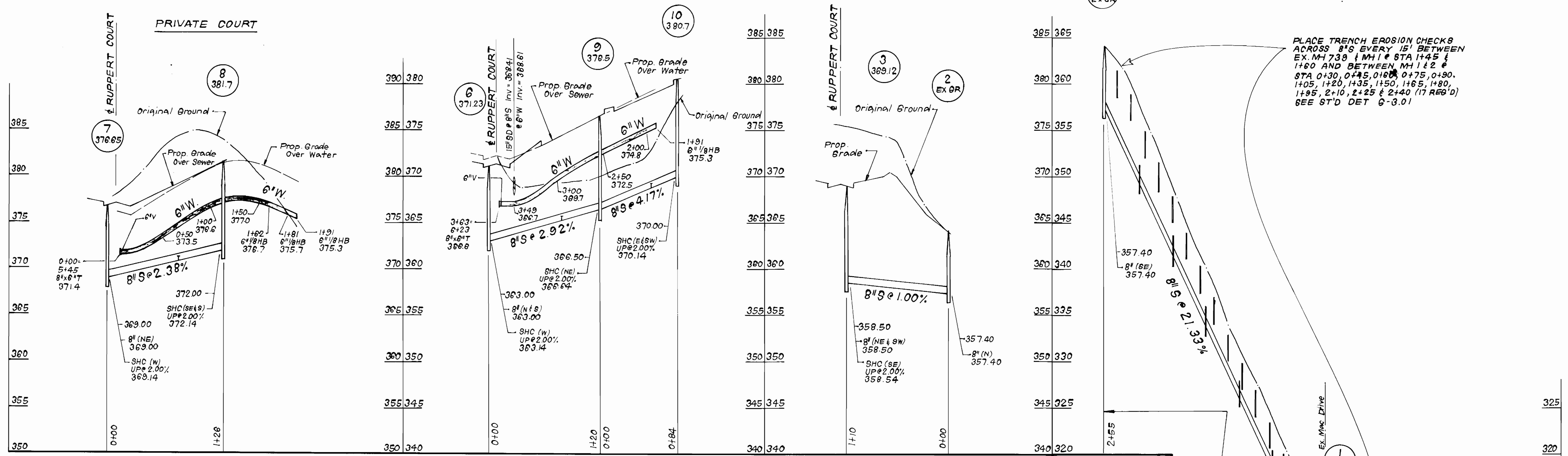
74.6' FROM MH-3 TO LOT 9	39' FROM MH-4 TO LOT 17	15' FROM MH-7 TO LOT 2	15' FROM MH-7 TO LOT 2
41' " " " " " " " " " "	11' " " " " " " " " " "	55' " " " " " " " " " "	55' " " " " " " " " " "
27.6' " " " " " " " " " "	12' " " " " " " " " " "	76' " " " " " " " " " "	76' " " " " " " " " " "
43' " " " " " " " " " "	13' " " " " " " " " " "	70' " " " " " " " " " "	70' " " " " " " " " " "
81.6' " " " " " " " " " "	15' " " " " " " " " " "	69' " " " " " " " " " "	69' " " " " " " " " " "
65' " " " " " " " " " "	22' " " " " " " " " " "	6' " " " " " " " " " "	6' " " " " " " " " " "
39' " " " " " " " " " "	23' " " " " " " " " " "	24' " " " " " " " " " "	24' " " " " " " " " " "
39' " " " " " " " " " "	24' " " " " " " " " " "	20' " " " " " " " " " "	20' " " " " " " " " " "
72.6' " " " " " " " " " "	13' " " " " " " " " " "	22' " " " " " " " " " "	22' " " " " " " " " " "
67' " " " " " " " " " "	14' " " " " " " " " " "	68' " " " " " " " " " "	68' " " " " " " " " " "
30' " " " " " " " " " "	15' " " " " " " " " " "	20' " " " " " " " " " "	20' " " " " " " " " " "
30.6' " " " " " " " " " "	16' " " " " " " " " " "	45.6' " " " " " " " " " "	45.6' " " " " " " " " " "
67' " " " " " " " " " "	16' " " " " " " " " " "	85' " " " " " " " " " "	85' " " " " " " " " " "
45' " " " " " " " " " "	17' " " " " " " " " " "	57' " " " " " " " " " "	57' " " " " " " " " " "
61' " " " " " " " " " "	22' " " " " " " " " " "	5' " " " " " " " " " "	5' " " " " " " " " " "
67' " " " " " " " " " "	22' " " " " " " " " " "	39' " " " " " " " " " "	39' " " " " " " " " " "
80' " " " " " " " " " "	23' " " " " " " " " " "	39' " " " " " " " " " "	39' " " " " " " " " " "
35' " " " " " " " " " "	42' " " " " " " " " " "	20.5' " " " " " " " " " "	20.5' " " " " " " " " " "

PROFILE SCALE:
HORIZONTAL: 1" = 50'
VERTICAL: 1" = 5'

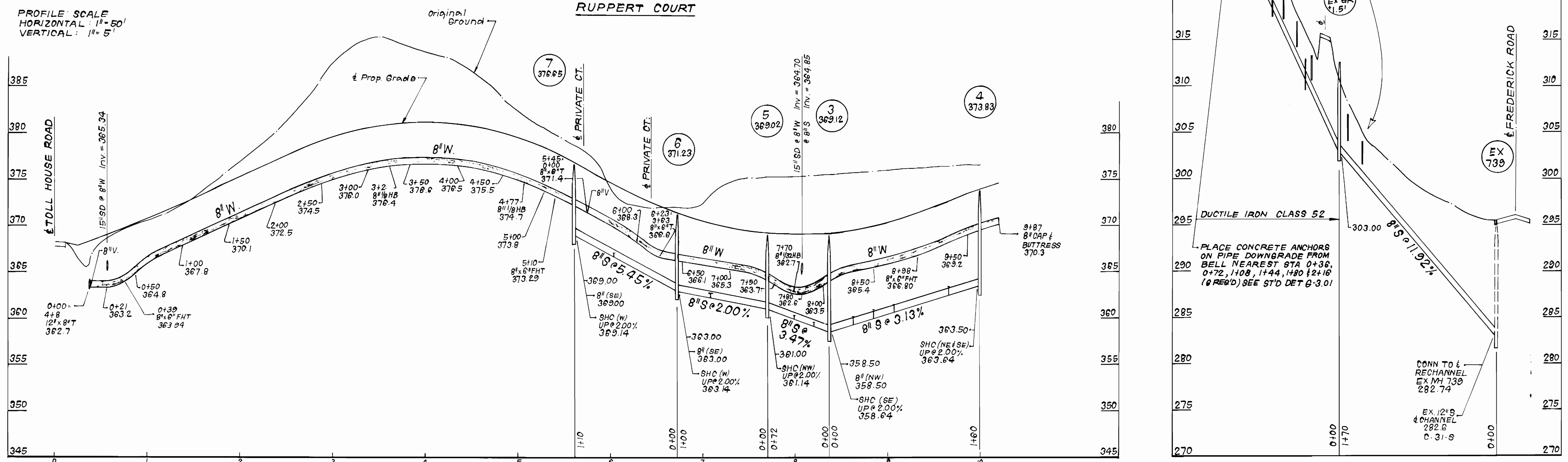
NOTE:
EXISTING ELECTRIC AND CABLE T.V. CONDUITS ARE SHOWN IN THEIR APPROXIMATE LOCATIONS, FROM BEST AVAILABLE RECORDS. WELL IN ADVANCE OF START OF CONSTRUCTION, THE EXACT LOCATIONS SHALL BE DETERMINED BY REQUESTING "MISS' UTILITY" TO IDENTIFY THEIR LOCATIONS AND CONDUCTING APPROPRIATE TEST PITS. IF CONFLICT APPEARS IMMINENT, CONTACT JOHN RITTER OF C.F. & S. (301) 381-7500 WITH ACTUAL HOR & VERT LOCATION.

DEPARTMENT OF PUBLIC WORKS HOWARD COUNTY, MARYLAND Director of Public Works: <i>James M. ...</i> DATE: 11/2/08 Chief, Bureau of Engineering: <i>...</i> DATE: 11/11/08 Chief, Bureau of Utilities: <i>...</i> DATE: 10-27-08 Chief, Land Development Div.: <i>...</i> DATE: 11/11/08		CLARK - FINEPROCK & SACKETT, INC. ENGINEERS - PLANNERS - SURVEYORS 7135 MINSTREL WAY COLUMBIA MARYLAND 21045 (301) 381-7500 BALTO. (301) 621-8100 WASH.		DES: _____ DRN: _____ CHK: JTR 2 Added Ex. W.H.C. #1 & #2 f. 3HC to Lot 41 & Lot Frontages 5-1-09 JTR 1 Revised location of SHC to lots 21, 22, 23 & 29 f. 3-15-09 DATE: _____ BY NO. _____ REVISION _____ DATE _____	PLAN & PROFILE OF WATER & SEWER MAINS 600' SCALE MAP NO. 2c BLOCK NO. _____	RUPPERT PROPERTY LOTS 1 THRU 48 2nd ELECTION DISTRICT CONTRACT NO. 14-1792-D SCALE AS SHOWN SHEET 2 OF 3
---	--	--	--	---	---	---

PRIVATE COURT



PLACE TRENCH EROSION CHECKS
ACROSS 8" S EVERY 15' BETWEEN
EX. MH 739 (MH) @ STA 1+45 &
1+60 AND BETWEEN MH 1 & 2 @
STA 0+30, 0+45, 0+60, 0+75, 0+90,
1+05, 1+20, 1+35, 1+50, 1+65, 1+80,
1+95, 2+10, 2+25 & 2+40 (17 REQ'D)
SEE ST'D DET G-3.01



DEPARTMENT OF PUBLIC WORKS
HOWARD COUNTY, MARYLAND

James M. ...
DIRECTOR OF PUBLIC WORKS DATE 11/13/88

Robert ...
CHIEF, BUREAU OF UTILITIES DATE 10-27-88

...
CHIEF, LAND DEVELOPMENT DIV. DATE 11/1/88

CLARK, FINEPROCK & SACKETT, INC.
ENGINEERS - PLANNERS - SURVEYORS

7135 MINTREL WAY COLUMBIA MARYLAND 21045
(301) 381-7500 BALTO. (301) 621-8100 WASH.



DES:	
DRN:	
CHK:	
DATE:	
BY:	NO.
REVISION:	
DATE:	

PROFILES OF
WATER & SEWER MAINS

600' SCALE MAP NO. 24 BLOCK NO.

RUPPERT PROPERTY
LOTS 1 THRU 48
2nd ELECTION DISTRICT
CONTRACT NO. 14-1792-D

SCALE
AS SHOWN

SHEET
3 OF 3