

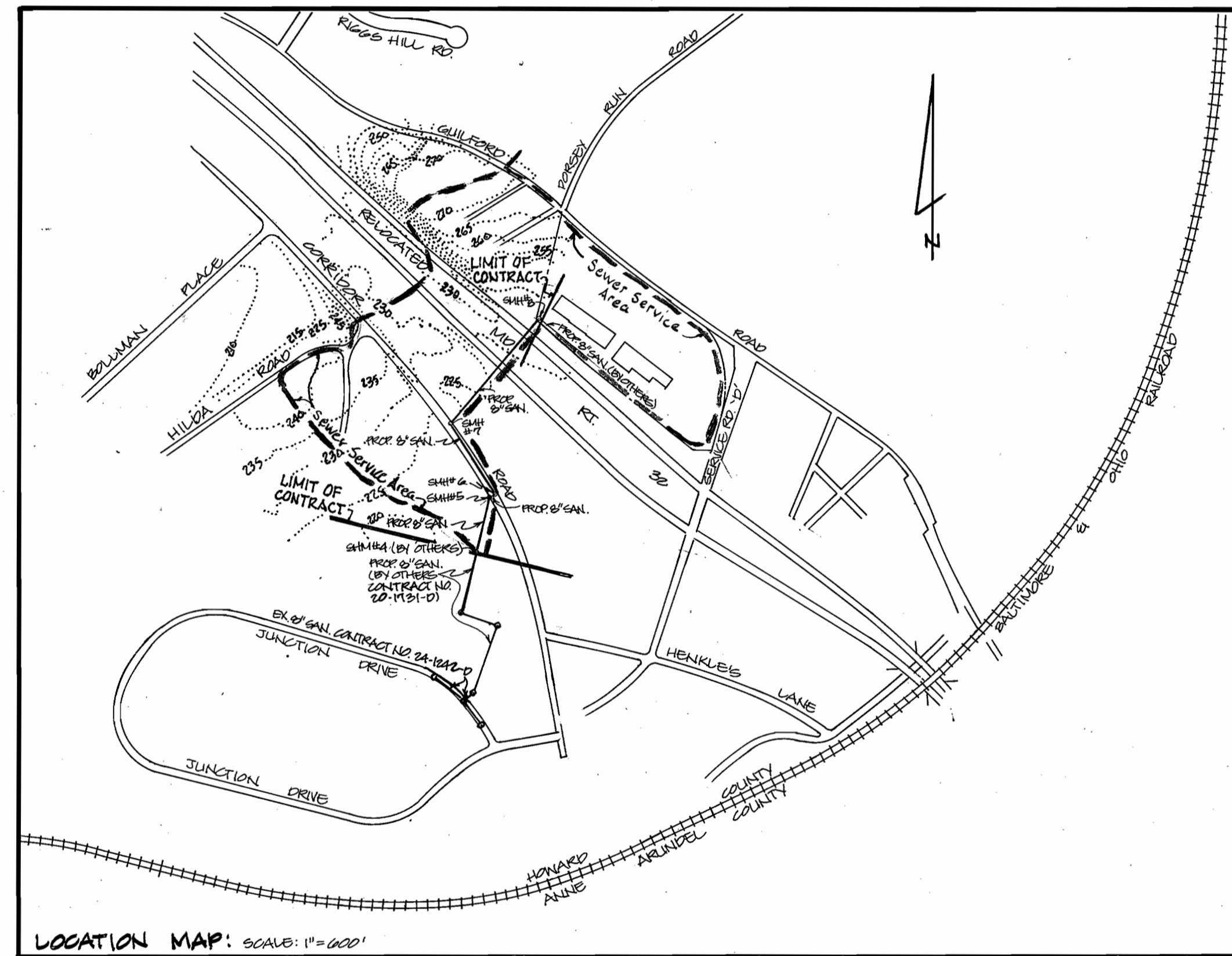
GENERAL NOTES:

- PART I:
- APPROXIMATE LOCATION OF EXISTING MAINS ARE SHOWN. THE CONTRACTOR SHALL TAKE ALL NECESSARY PRECAUTIONS TO PROTECT EXISTING MAINS AND SERVICE AND MAINTAIN UNINTERRUPTED SUPPLY. ANY DAMAGE INCURRED SHALL BE REPAIRED IMMEDIATELY TO THE SATISFACTION OF THE ENGINEER AT THE CONTRACTORS EXPENSE.
 - ALL HORIZONTAL CONTROLS ARE BASED ON MARYLAND STATE COORDINATES.
 - ALL VERTICAL CONTROLS ARE BASED ON U.S.G.S. DATA.
 - ALL PIPE ELEVATIONS ARE INVERT ELEVATIONS.
 - CLEAR ALL UTILITIES BY A MINIMUM OF 6". CLEAR ALL POLES BY 2'-0" MINIMUM OR TUNNEL AS REQUIRED. THE OWNER HAS CONTACTED THE UTILITY COMPANIES AND HAS MADE ARRANGEMENTS FOR BRACING OF POLES AS SHOWN ON THE DRAWINGS. IN THE EVENT THE CONTRACTORS WORK REQUIRES THE BRACING OF ADDITIONAL POLES, ANY COST INCURRED BY THE OWNER FOR THE BRACING OF ADDITIONAL POLES OR DAMAGES SHALL BE DEDUCTED FROM THE MONEY OWED THE CONTRACTOR. THE CONTRACTOR SHALL COORDINATE WITH THE UTILITY COMPANIES TO SCHEDULE THE BRACING OF POLES.
 - FOR DETAILS NOT SHOWN ON THE DRAWINGS, AND FOR MATERIALS AND CONSTRUCTION METHODS, USE HOWARD COUNTY DESIGN MANUAL, VOL. IV, STANDARD SPECIFICATIONS AND DETAILS FOR CONSTRUCTION. THE CONTRACTOR SHALL HAVE A COPY OF VOL. IV ON THE JOB.
 - WHERE TEST PITS HAVE BEEN MADE ON EXISTING UTILITIES THEY ARE NOTED BY THE SYMBOL @ AT THE LOCATION OF THE TEST PIT. A NOTE OR NOTES CONTAINING RESULTS OF THE TEST PITS IS INCLUDED ON THE DRAWINGS. EXISTING UTILITIES IN THE VICINITY OF THE PROPOSED WORK FOR WHICH TEST PITS HAVE NOT BEEN DUG SHALL BE LOCATED BY THE CONTRACTOR TWO WEEKS IN ADVANCE OF CONSTRUCTION OPERATIONS AT HIS OWN EXPENSE.
 - CONTRACTOR SHALL NOTIFY THE FOLLOWING UTILITIES, OR AGENCIES AT LEAST FIVE WORKING DAYS BEFORE STARTING WORK SHOWN ON THESE PLANS: STATE HIGHWAY ADMINISTRATION 531-5533, BALTO. GAS & ELECTRIC CO., CONTRACTOR SERVICES 850-4620, BALTO. GAS & ELECTRIC CO., UNDERGROUND DAMAGE CONTROL 859-9054, BALTO. GAS & ELECTRIC CO. TROUBLE SHOOTING 298-9001, MISS UTILITY 1-559-0100, COLONIAL PIPELINE 795-1390 BUREAU OF UTILITIES, HOWARD CO. DEPT. OF PUBLIC WORKS 992-2366, C&P TELEPHONE 1-800-257-7777.
 - TREES AND SHRUBS ARE TO BE PROTECTED FROM DAMAGE TO MAXIMUM EXTENT. TREES AND SHRUBS LOCATED WITHIN THE CONSTRUCTION STRIP ARE NOT TO BE REMOVED OR DAMAGED BY THE CONTRACTOR.
 - CONTRACTOR SHALL REMOVE TREES, SHRUBS AND ROOTS ALONG THE LINE OF EXCAVATION. PAYMENT FOR SUCH REMOVAL SHALL BE INCLUDED IN THE UNIT PRICE BID FOR CONSTRUCTION OF THE MAIN.
 - PLACE REGULATION "MEN WORKING" WARNING SIGNS AS REQUIRED TO COMPLY WITH THE MARYLAND STATE HIGHWAY ADMINISTRATIONS MANUAL FOR HIGHWAY CONSTRUCTION AND MAINTENANCE OPERATIONS.

PART II: SEWER

- ALL SEWER MAINS SHALL BE C.S.P.X., R.C.S.P., V.C.P.X., A.C.P. CLASS 2400 OR P.V.C. UNLESS OTHERWISE NOTED.
- THE CONTRACTOR SHALL PROVIDE A JOINT IN ALL SEWER MAINS WITHIN 2'-0" OF EXTERIOR MANHOLE WALL.
- ALL MANHOLES SHALL BE 4'-0" INSIDE DIAMETER UNLESS OTHERWISE NOTED.
- MANHOLES SHOWN WITH 12" WALLS ARE BRICK MANHOLES ONLY.
- MANHOLES DESIGNATED W.T. IN THE PLAN AND PROFILE SHALL HAVE WATERTIGHT FRAME AND COVERS, STANDARD DETAIL G-5.52. WHERE WATERTIGHT FRAME AND COVER IS USED, SET TOP OF FRAME 1'-6" ABOVE FINISHED GRADE UNLESS NOTED ON DRAWINGS.
- MANHOLES LOCATED WITHIN PROPOSED ROADWAY SHALL HAVE STANDARD HEAVY TRAFFIC MANHOLE FRAME AND COVER STANDARD DETAIL G-5.51.
- THE CONTRACTOR SHALL ARRANGE TO HAVE THE EXISTING UNDERGROUND CABLE FIELD LOCATED PRIOR TO ANY EXCAVATION FOR THE SEWER MAIN.
- THE SERVICE CLAMPS ARE TO HAVE STAINLESS STEEL STRAPS.

NOTE: THIS SEWER CONTRACT WILL NOT BE PUT INTO SERVICE UNTIL EACH TIME AS CONTRACT NO. 20-1776-D IS CONSTRUCTED AND PLACED INTO SERVICE.



QUANTITIES			
ITEM	ESTIMATED	AS-BUILT	MATERIAL / SUPPLIER
8" SANITARY SEWER	1513'	1513'	CL 52 DIP / u.s. Pipe
36" STEEL SLEEVE CASING	400'	400'	500 NOMINAL WALL Pittsburgh Pipe
SANITARY MANHOLE	4	4	ATLANTIC

TYPE OF BUILDING: OFFICE / WAREHOUSE
 NUMBER OF LOTS: 1
 NUMBER OF WATER H.C.: 0
 NUMBER OF SEWER H.C.: 4
 DRAINAGE AREA: LITTLE PATUXENT
 WATER CODE: 104
 SEWER CODE: 4020000

THE DEVELOPMENT PLAN IS APPROVED FOR SOIL AND SEDIMENT CONTROL BY THE HOWARD SOIL CONSERVATION DISTRICT.
 REVIEWED FOR HOWARD SOIL CONSERVATION DISTRICT AND MEETS TECHNICAL REQUIREMENTS.
 SEDIMENT CONTROL MEASURES FOR THIS CONTRACT WILL BE IMPLEMENTED IN ACCORDANCE WITH SECTION 21A OF THE STANDARD SPECIFICATIONS AND SDP-88-101

DEPARTMENT OF PUBLIC WORKS
 HOWARD COUNTY, MARYLAND

James L. ... 3/2/88
 DIRECTOR OF PUBLIC WORKS DATE

James Mitchell ... 3/2/88
 CHIEF, BUREAU OF UTILITIES DATE

... 3-22-88
 CHIEF, BUREAU OF ENGINEERING DATE

... 3-22-88
 CHIEF, LAND DEVELOPMENT DIVISION DATE

ENGINEER
GEORGE WM. STEPHENS JR. AND ASSOCIATES, INC.
 303 ALLEGHENY AVENUE TOWSON, MD. 21204
 (301) 825-8120



DESIGNED: P.R.C.	BY NO.	REVISION	DATE
DRAWN: S.H.L.			
CHECKED: P.R.C.			

TITLE SHEET
CONTRACT NO. 20-1776-D

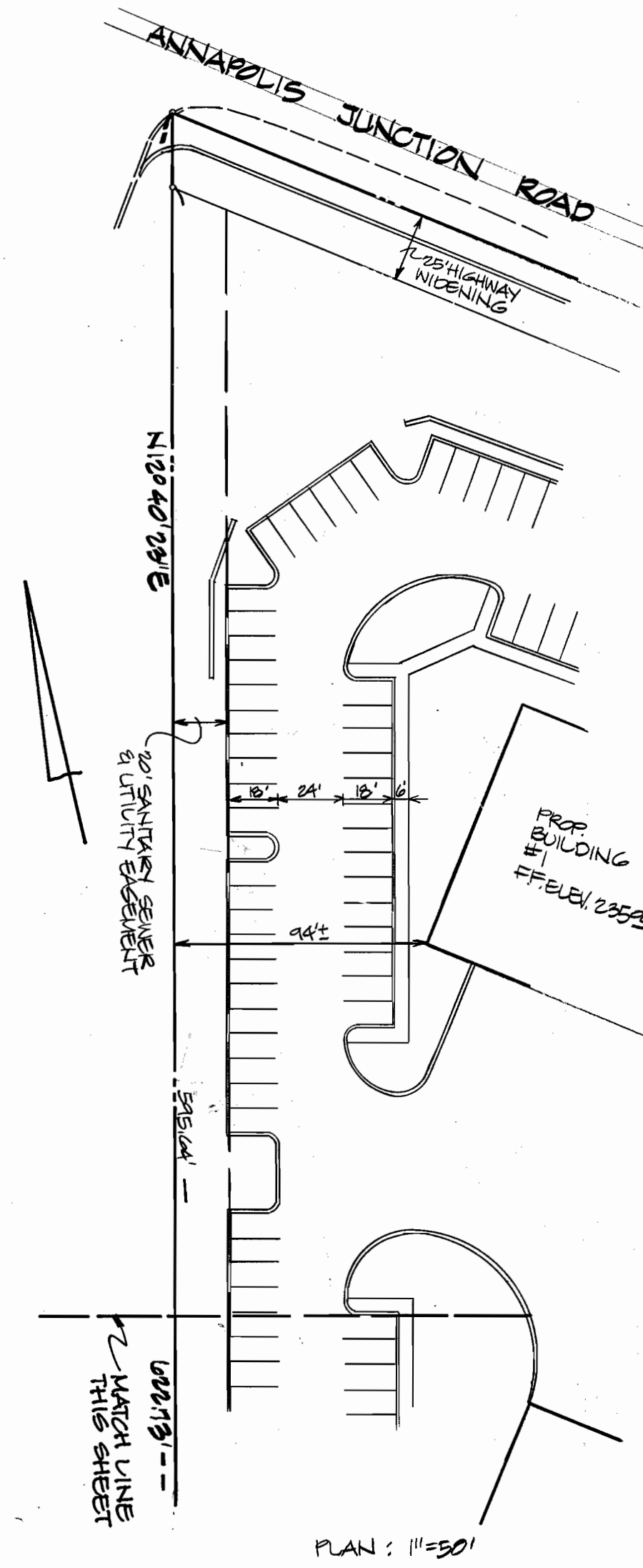
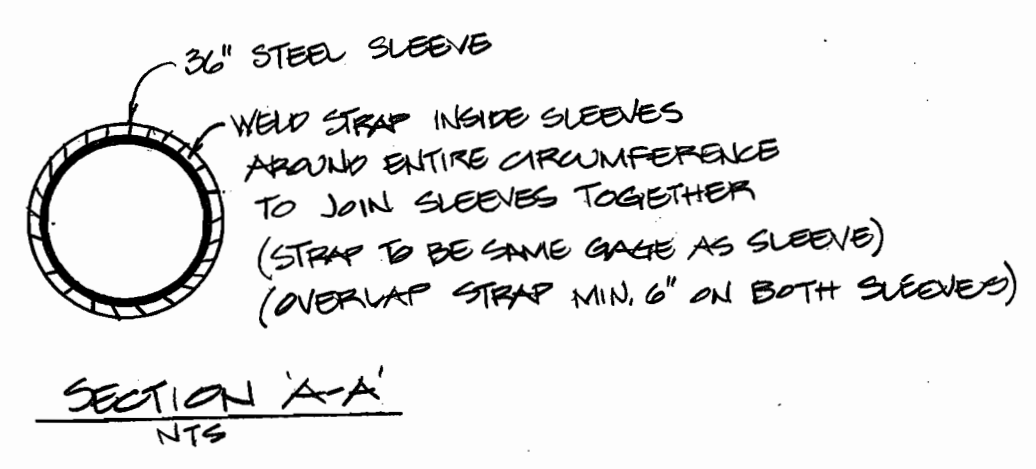
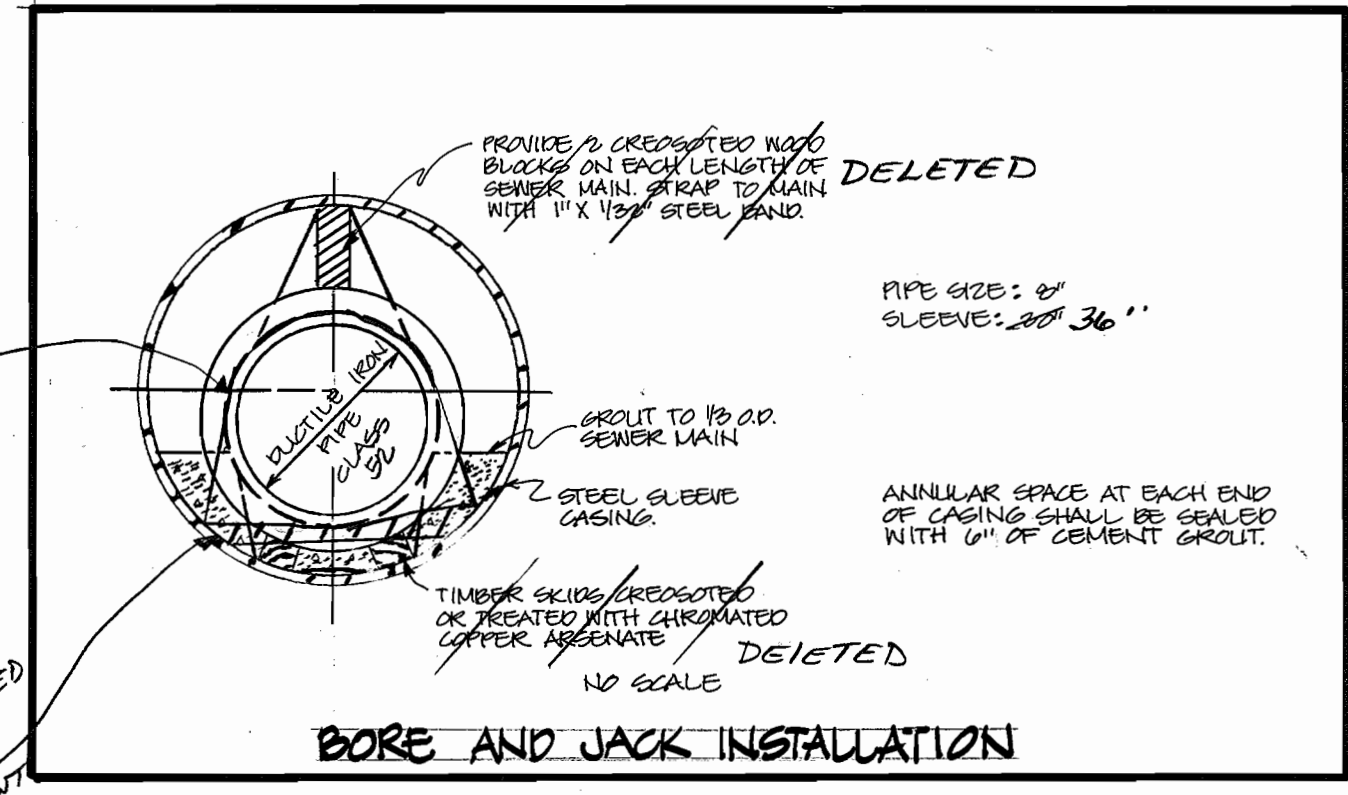
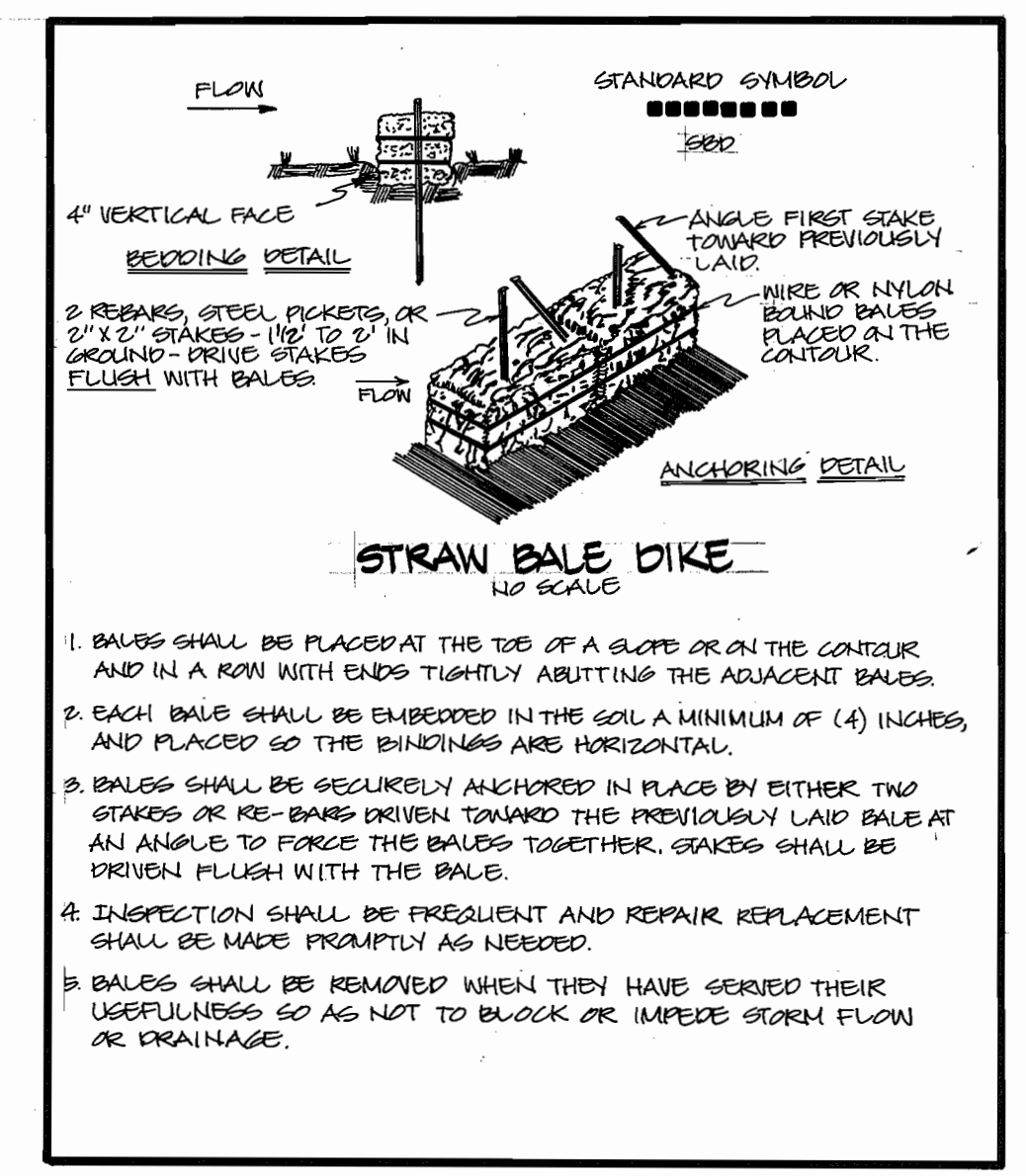
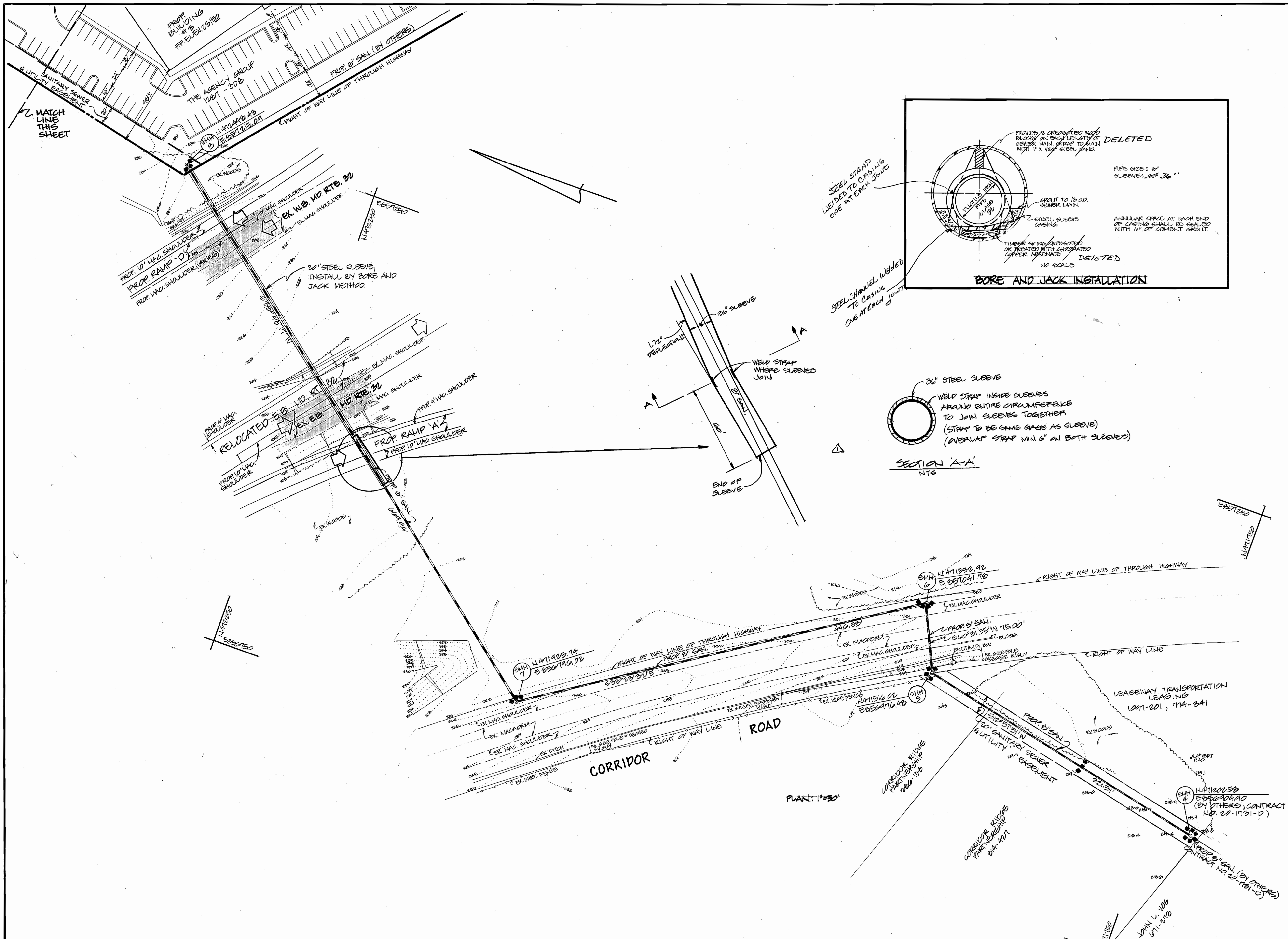
600' SCALE MAP NO. 48 BLOCK NO. 18

PROPOSED OFFICE / WAREHOUSE
PROPERTY OF THE AGENCY GROUP
 ANNAPOLIS JUNCTION ROAD

HOWARD CO., MARYLAND ELECTION DISTRICT 6

SCALE: AS SHOWN
 SHEET NO. 1 OF 3

AS-BUILT 8-25-88



THE DEVELOPMENT PLAN IS APPROVED FOR SOIL AND SEDIMENT CONTROL BY THE HOWARD SOIL CONSERVATION DISTRICT.
 REVIEWED FOR HOWARD SOIL CONSERVATION DISTRICT AND MEETS TECHNICAL REQUIREMENTS.
 SEDIMENT CONTROL MEASURES FOR THIS CONTRACT WILL BE IMPLEMENTED IN ACCORDANCE WITH SECTION 214 OF THE STANDARD SPECIFICATIONS AND SOP-00-101.

DEPARTMENT OF PUBLIC WORKS
 HOWARD COUNTY, MARYLAND

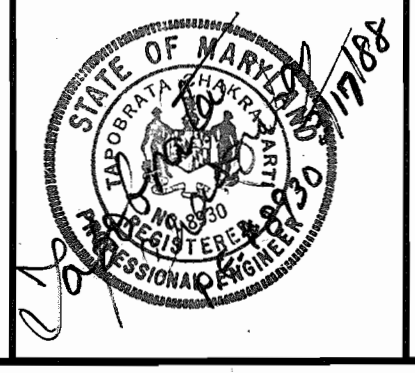
James L. ... 3/22/88
 DIRECTOR OF PUBLIC WORKS

Richard ... 3-22-88
 CHIEF, BUREAU OF UTILITIES

... 3-22-88
 CHIEF, BUREAU OF ENGINEERING

... 3-22-88
 CHIEF, LAND DEVELOPMENT DIVISION

ENGINEER
GEORGE WM. STEPHENS JR. AND ASSOCIATES, INC.
 303 ALLEGHENY AVENUE TOWSON, MD. 21204
 (301) 825-8120



DESIGNED: P.R.C., C.A.H.
 DRAWN: C.A.H.
 CHECKED: P.R.C., T.C.
 COMPS: B.M.
 P.N.: 8016

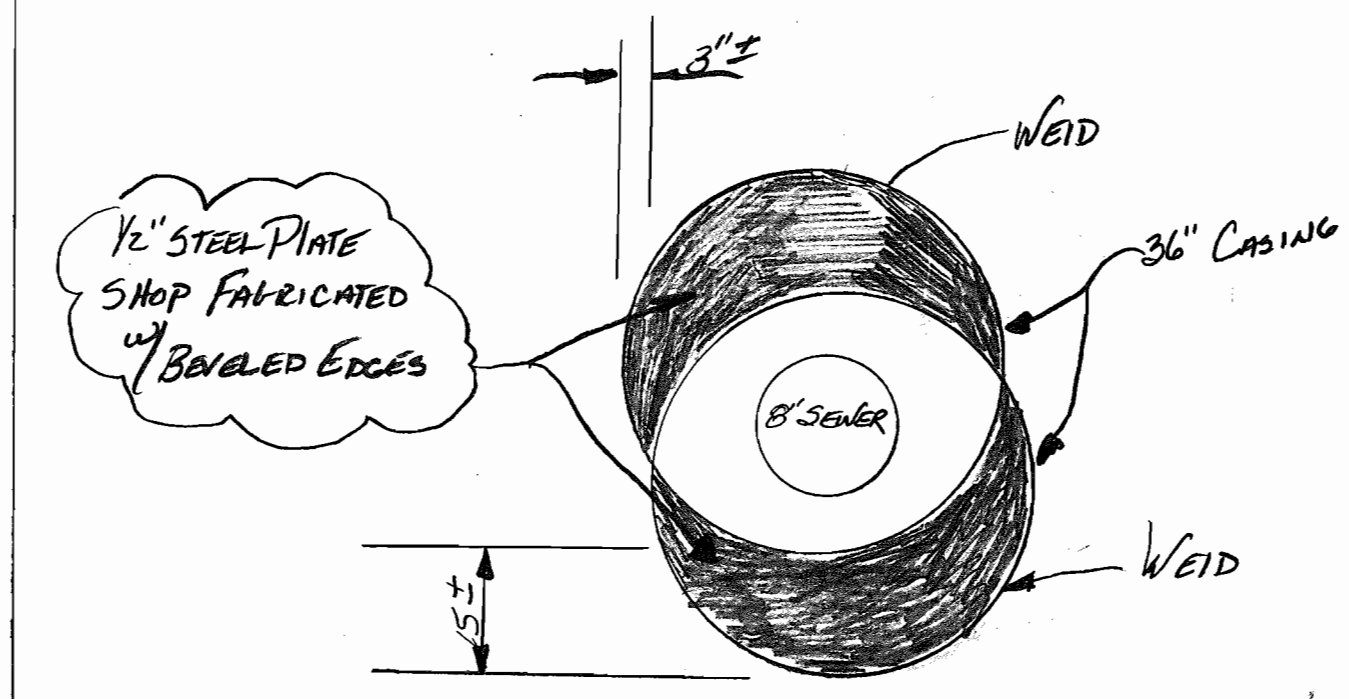
BY	NO.	REVISION	DATE
SWS	1	CORRECTION IN SLEEVE	2/1/88

PLAN AND DETAILS FOR PROPOSED SANITARY SEWER MAIN CONTRACT NO. 20-1776-D
 600' SCALE MAP NO. 46 BLOCK NO. 18

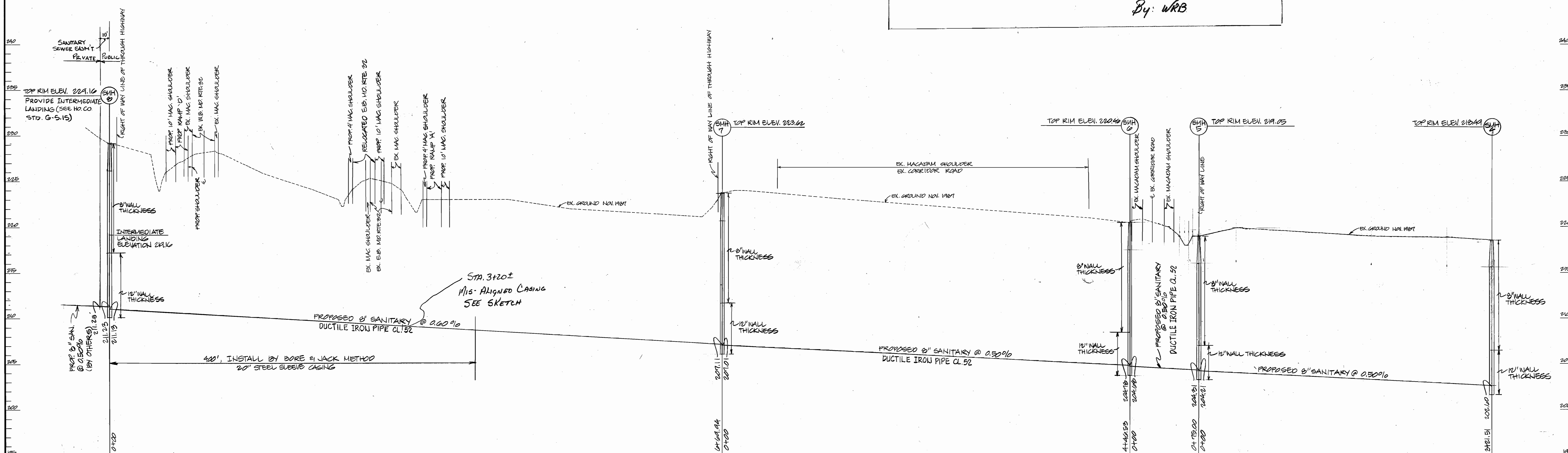
PROPOSED OFFICE / WAREHOUSE
PROPERTY OF THE AGENCY GROUP
 ANNAPOLIS JUNCTION ROAD
 HOWARD CO., MARYLAND ELECTION DISTRICT 6

SCALE AS SHOWN
 SHEET NO. 2 OF 3

Approved Solution For Mis-Alignment
 OF 36" CASING @ STA 3120±
 M# 8 to M# 7



Contract = 20-176-D
 Agency Group
 By: WRB



THE DEVELOPMENT PLAN IS APPROVED FOR SOIL AND SEDIMENT CONTROL BY THE HOWARD SOIL CONSERVATION DISTRICT. <i>Stephen L. Shuler</i> 3/2/88 HOWARD SOIL CONSERVATION DISTRICT DATE		REVIEWED FOR HOWARD SOIL CONSERVATION DISTRICT AND MEETS TECHNICAL REQUIREMENTS. <i>James McNeil</i> 3-21-88 HOWARD SOIL CONSERVATION SERVICE DATE		SEDIMENT CONTROL MEASURES FOR THIS CONTRACT WILL BE IMPLEMENTED IN ACCORDANCE WITH SECTION 214 OF THE STANDARD SPECIFICATIONS AND SOP-88-101.	
DEPARTMENT OF PUBLIC WORKS HOWARD COUNTY, MARYLAND <i>James McNeil</i> 3/22/88 DIRECTOR OF PUBLIC WORKS DATE <i>William S. Kelly</i> 3-22-88 CHIEF, BUREAU OF ENGINEERING DATE		ENGINEER GEORGE WM. STEPHENS JR. AND ASSOCIATES, INC. 303 ALLEGHENY AVENUE TOWSON, MD 21284 (301) 825-8120		DESIGNED: P.R.C., C.A.H. DRAWN: C.A.H. CHECKED: P.R.C., T.C. P.N.: 8016	
PROFILES FOR PROPOSED SANITARY SEWER MAIN CONTRACT NO. 20-1776-D 1" = 100' SCALE MAP NO. 40		PROPOSED OFFICE/WAREHOUSE PROPERTY OF THE AGENCY GROUP ANNAPOLIS JUNCTION ROAD HOWARD CO., MD. ELECT. DIST. 6		SCALE: AS SHOWN SHEET NO. 3 OF 3	

AS-BUILT 8-25-88