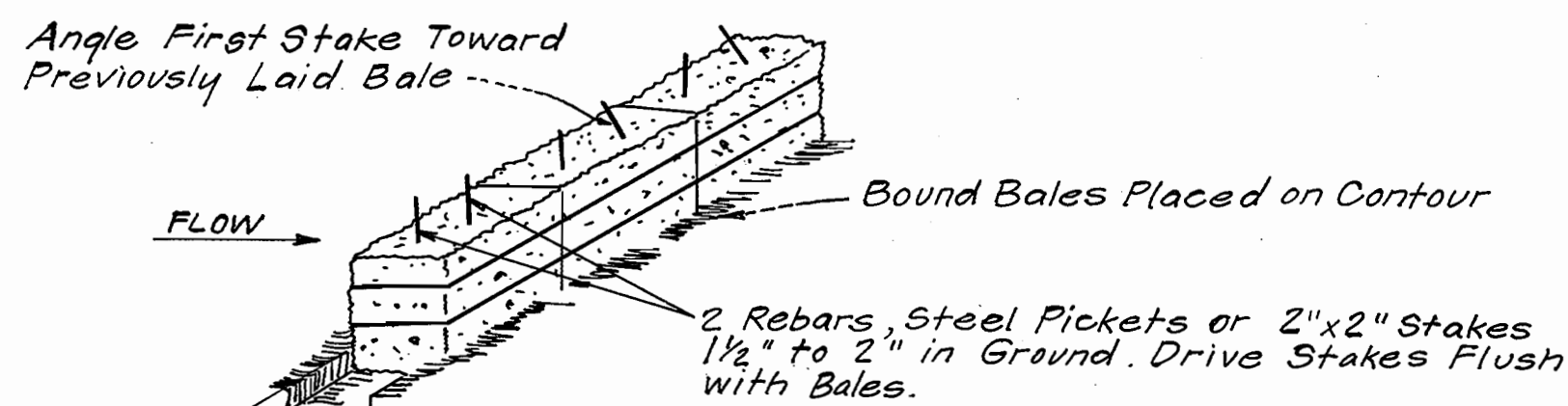


BEDDING DETAIL

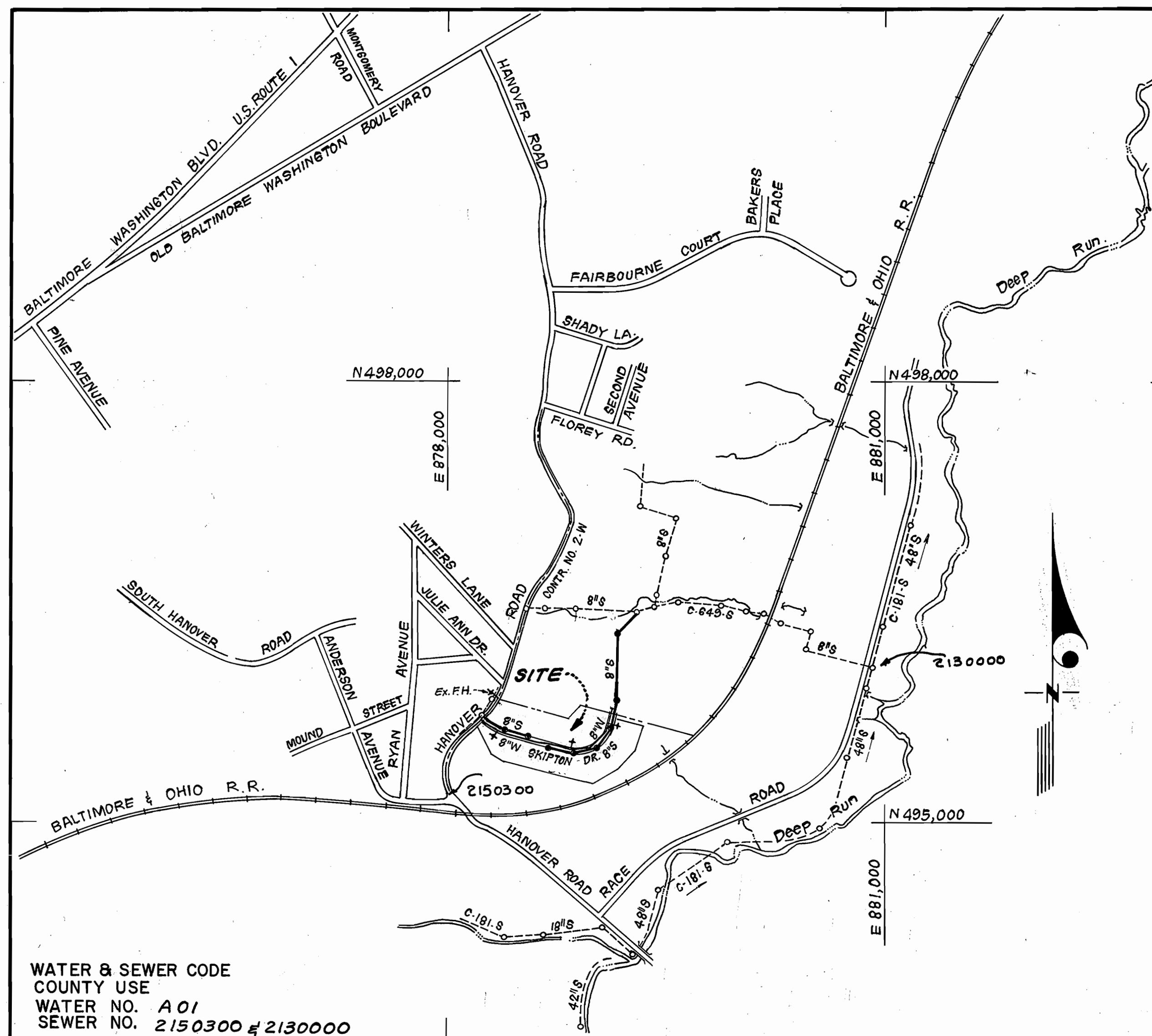
STANDARD SYMBOL
S.B.D.



ANCHORING DETAIL

STRAW BALE DIKE

NO SCALE



VICINITY MAP

SCALE: 1" = 600'

WATER & SEWER CODE
COUNTY USE
WATER NO. A 01
SEWER NO. 2150300 & 2130000

TYPE OF BUILDING	Single Family
NO OF LOTS	26
NO OF WHC'S	26
NO OF 6HC'S	26
DRAINAGE AREA	Potomac WWTP

GENERAL NOTES

- Approximate location of existing mains are shown. The contractor shall take all necessary precautions to protect existing mains and services and maintain uninterrupted supply. Any damage incurred shall be repaired immediately to the satisfaction of the inspector, at the contractor's expense.
- All horizontal controls are based on Maryland State Coordinates.
- All vertical controls are based on U.S.G.S. Datum.
- All pipe elevations shown are invert elevations.
- Clear all utilities by a minimum of 6" clear all poles by 2'-0" minimum or tunnel as required. Any cost incurred to the contractor for tunneling or bracing at poles shall be included in unit prices bid for excavation and backfill.
- For details not shown on the drawings use Howard County Standard Details.
- For materials and construction methods use Howard County Standard Specifications & Ho. Co. Design Manual, Volume II. The contractor shall have Volume II on the job.
- Contractor shall locate existing utilities a minimum of two (2) weeks in advance of construction operations in the vicinity of proposed utilities at his own expense.
- Contractor shall notify the following utilities or agencies at least five (5) working days before starting work shown on these plans.
State Highway Administration - 531-5533
Baltimore Gas & Electric Company - Contractor Services - 850-4620.
Baltimore Gas & Electric Company - Underground Damage Control - 859-9004.
Baltimore Gas & Electric Company - Trouble Shooting - 298-0001.
"Miss Utility" - 1-559-0100
Chesapeake & Potomac (C & P) Telephone Company - 1-800-257-7777.
Colonial Pipeline Company - 785-1390.
Bureau of Utilities Howard County - 992-2366
- Trees are to be protected from damage to maximum extent. Trees located within the construction strip are not to be removed or damaged by the contractor.
- Contractor shall remove trees, stumps, and roots along line of excavation as directed by the inspector. Payment for such removal shall be included in the unit price bid for excavation and backfill.
- Place regulation "Men Working" and warning signs as required to comply with Maryland State Highway Administration Manual of Traffic Control for Highway Construction and Maintenance Operations.
- All water mains to be C.I.P. Class 52 unless otherwise noted.
- Top of all water mains to have a minimum of 3-1/2' cover unless otherwise noted.
- Valves adjacent to tees shall be strapped to tees.
- Block all fittings with concrete.
- Bury line elevations on fire hydrants shall be set to the elevations shown on the drawings. All fire hydrants shall be strapped and buttressed with concrete in accordance with standard details. Soil around the fire hydrant to be compacted in accordance with Section 1003 & 1009 of the Standard Specifications.
- All water house connections shall be for an inside meter setting.
- The contractor shall not operate any water main valves on the existing system.
- All sewer mains shall be C.S.P.X., V.C.P.X., P.V.C., or A.C.P. Class 2400 unless otherwise noted.
- The contractor shall provide a joint in all sewer mains within 2'-0" of exterior manhole wall.
- All manholes shall be 4'-0" inside diameter, unless otherwise noted.
- Water main and water house connection lines must have a minimum of one foot separation from the sanitary sewer and sewer house connections as they cross. Except at crossings, water and sewer lines shall have a minimum horizontal separation of 10'.
- All D.I.P. fittings shall be in accordance with AWWA specification C-153 Ductile Iron Compact Fittings, 3-inch through 12-inch for water and other liquids.

QUANTITIES			
ITEM	EST'D.	AS BUILT	MATERIAL/SUPPLIER
8" W	1,020 LF	1,020 LF	A&P ATLANTIC STATES
8" S	1,626 LF	1,586 LF	CHARLOTTE
6" 6HC	30 625 LF	17 LF	CHARLOTTE
1" WHC	225 LF	237 LF	CAMBRIDGE & LEE
3/4" WHC	265 LF	262 LF	CAMBRIDGE & LEE
8" V	1 EA.	1 EA.	KENNEDY / M&H
4'-0" DIA. MH	9 EA.	9 EA.	B&C UTILITY SUPPLY
F.H.	3 EA.	3 EA.	KENNEDY
8x8" T.S.#V.	1 EA.	1 EA.	KENNEDY / M&H
4" SHC		617.5 LF	CHARLOTTE
6" W	61 LF	61 LF	CHARLOTTE

DELETED

AS-BUILT
COMPLETED 8-16-91

CONTRACT NO. 14-1771-D
HANOVER WOODS
LOTS 1 THRU 29
HOWARD COUNTY, MARYLAND
DEPARTMENT OF PUBLIC WORKS

Sediment Control Measures will be implemented in accordance with Section 219 of the Specifications & with Road Construction Plan F 86-90; Drawing , Sediment & Erosion Control.

REVIEWED FOR HOWARD SOIL CONSERVATION DISTRICT AND MEETS TECHNICAL REQUIREMENT

James M. Adams 5/20/88
SIGNATURE DATE

U.S. SOIL CONSERVATION SERVICE

This Development Plan is approved for Soil Erosion and Sediment Control by the Howard Soil Conservation District.

APPROVED:
Stephen L. Adams 5/20/88
Howard S.C.D. DATE

DEPARTMENT OF PUBLIC WORKS
HOWARD COUNTY, MARYLAND

James M. Adams 11/6/88
DIRECTOR OF PUBLIC WORKS DATE

Robert M. Benjamin 11/3/88
CHIEF, BUREAU OF UTILITIES DATE

William E. Ryan 11-4-88
CHIEF, BUREAU OF ENGINEERING DATE

Paul J. Jenson 11/4/88
CHIEF, LAND DEVELOPMENT DIV. DATE

CFE CLARK-FINEFROCK & SACKETT
ENGINEERS - PLANNERS - SURVEYORS

7135 MINSTREL WAY COLUMBIA MARYLAND 21045
(301) 381-7500 BALTO. (301) 621-8100 WASH.



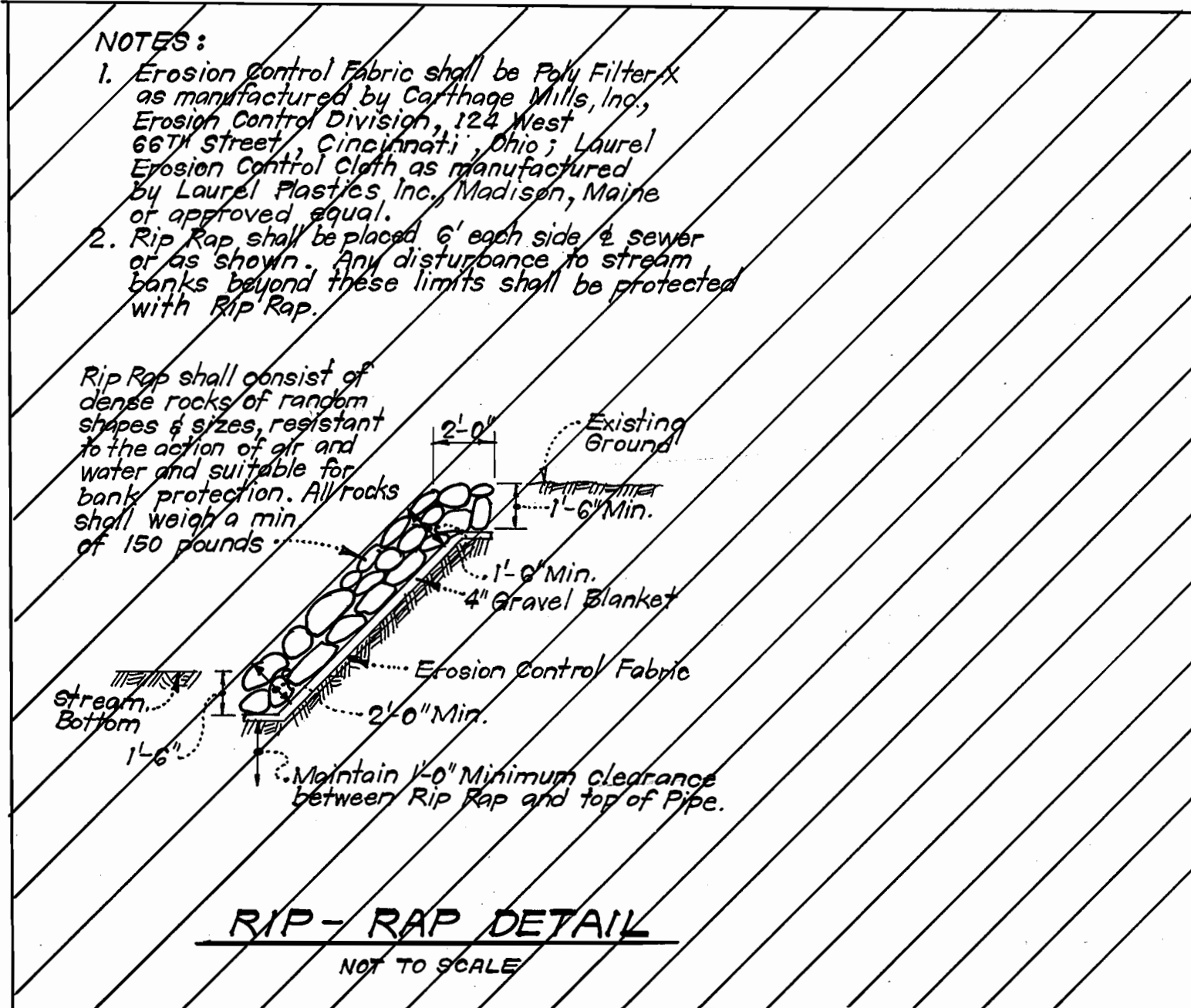
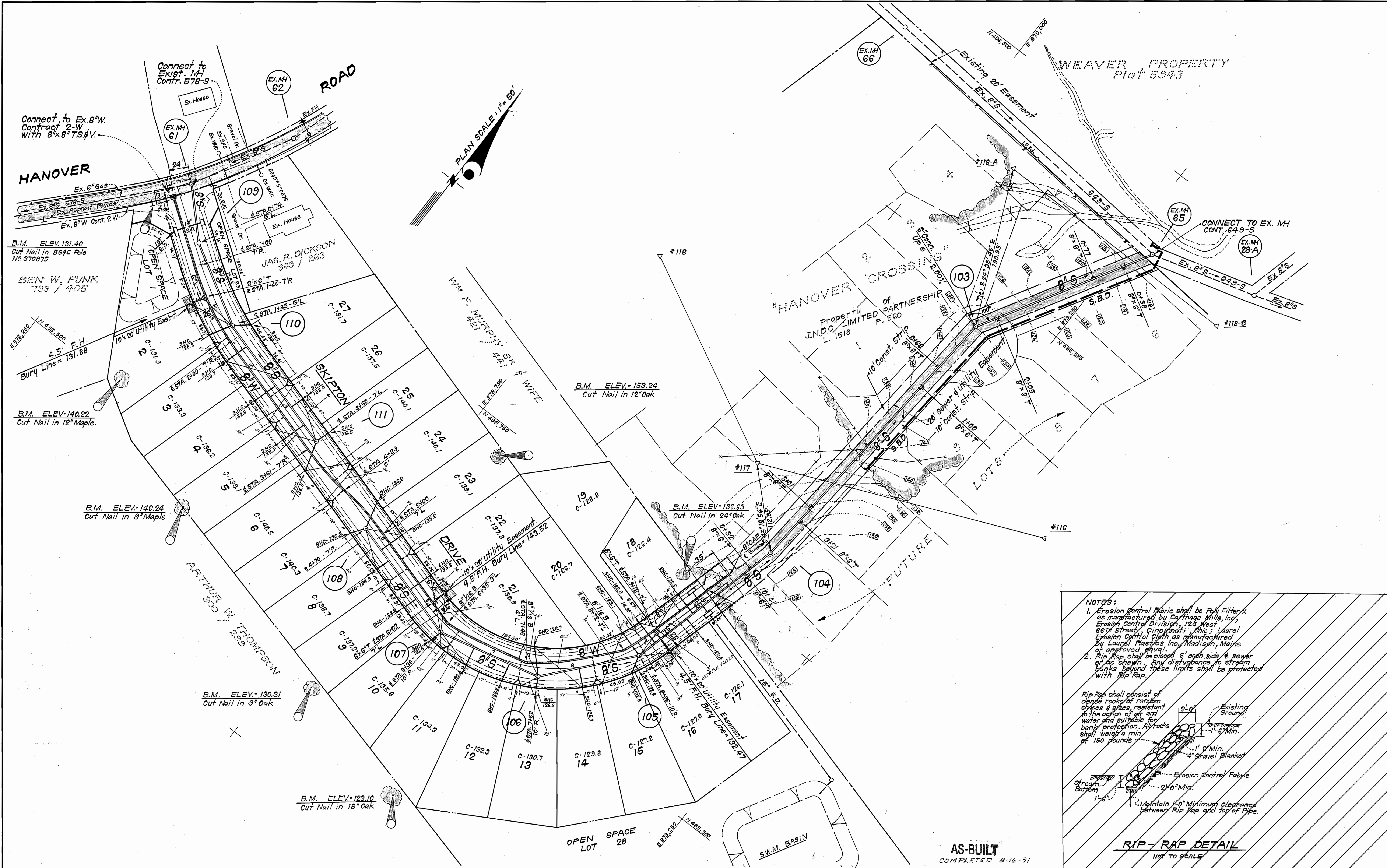
DES:	
DRN:	
CHK:	
DATE:	
BY NO.	
REVISION	
DATE	

TITLE SHEET

600' SCALE MAP NO. 38 BLOCK NO.

HANOVER WOODS
LOTS 1 THRU 29
1ST ELECTION DISTRICT
CONTRACT NO. 14-1771-D

SCALE AS SHOWN
SHEET 1 OF 3



AS-BUILT
COMPLETED 8-16-91

DEPARTMENT OF PUBLIC WORKS
HOWARD COUNTY, MARYLAND

James J. ... 11/8/88
DIRECTOR OF PUBLIC WORKS DATE

Robert ... 11-3-88
CHIEF, BUREAU OF UTILITIES DATE

... 11-4-88
CHIEF, BUREAU OF ENGINEERING DATE

... 11/8/88
CHIEF, LAND DEVELOPMENT DIV. DATE

CLARK · FINEFROCK & SACKETT
ENGINEERS · PLANNERS · SURVEYORS

7135 MINSTREL WAY COLUMBIA MARYLAND 21045
(301) 381-7500 BALTO. (301) 621-8100 WASH.



DES:	
DRN:	
CHK:	
DATE:	
BY:	
NO.	
REVISION	
DATE	

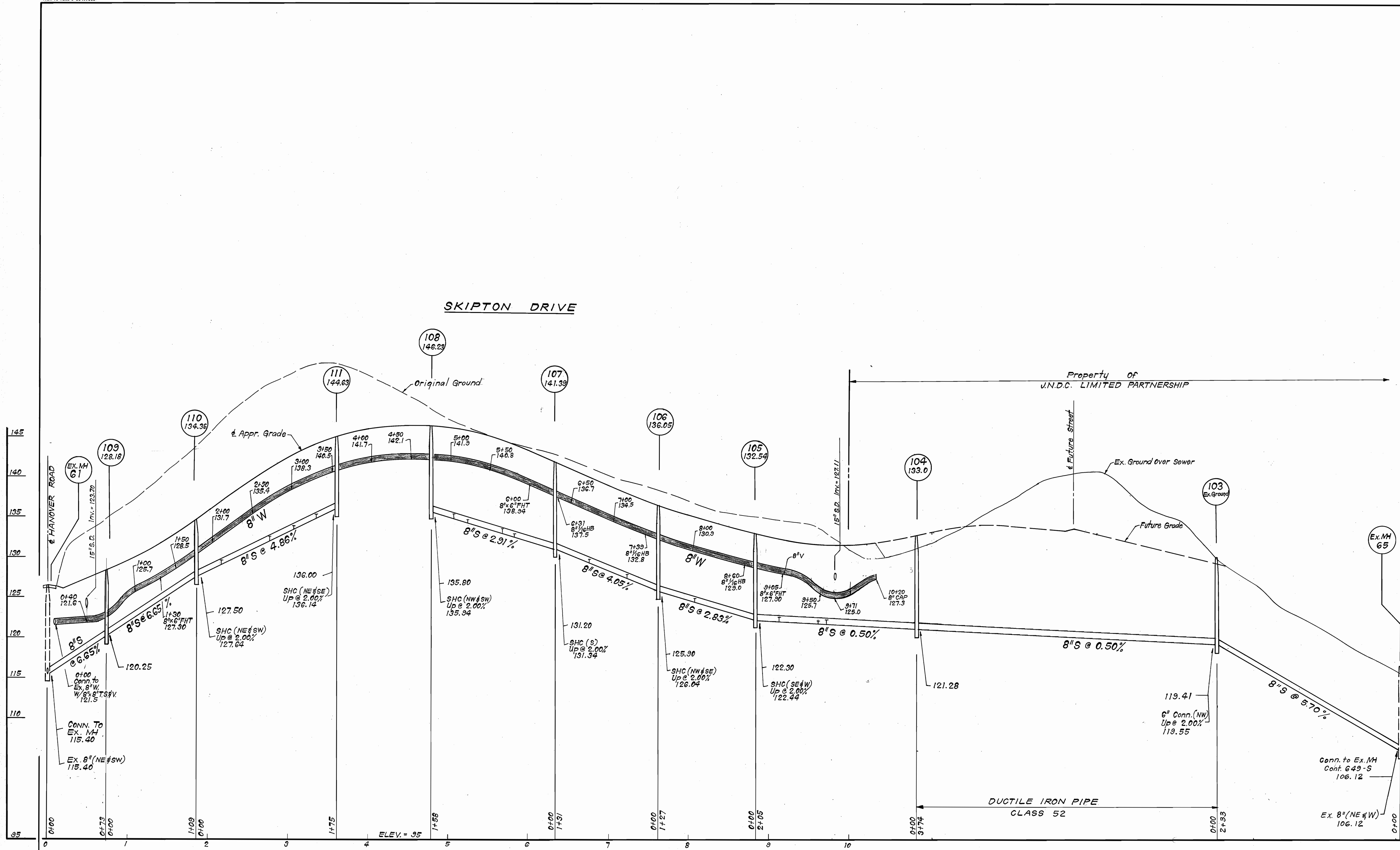
PLAN OF
WATER & SEWER MAINS

600' SCALE MAP NO. 38 BLOCK NO.

HANOVER WOODS
LOTS 1 THRU 29
1ST ELECTION DISTRICT
CONTRACT NO. 14-1771-D

SCALE
AS SHOWN

SHEET
2 OF 3



DEPARTMENT OF PUBLIC WORKS
 HOWARD COUNTY, MARYLAND

Robert M. Beninger 11-3-83
 DIRECTOR OF PUBLIC WORKS DATE
 CHIEF, BUREAU OF UTILITIES

James R. Reid 11-4-83
 CHIEF, BUREAU OF ENGINEERING DATE
 CHIEF, LAND DEVELOPMENT DIV.

CFS CLARK · FINEPROCK & SACKETT
 ENGINEERS · PLANNERS · SURVEYORS
 7135 MINSTREL WAY COLUMBIA MARYLAND 21045
 (301) 381-7500 BALTO. (301) 621-8100 WASH.



DES:	
DRN:	
CHK:	
DATE:	
BY:	
NO.:	
REVISION:	
DATE:	

PROFILES OF
 WATER & SEWER MAINS
 600' SCALE MAP NO. 38 BLOCK NO.

HANOVER WOODS
 LOTS 1 THRU 29
 1ST ELECTION DISTRICT
 CONTRACT NO. 14-1771-D

SCALE
 HORIZ: 1"=50'
 VERT: 1"=5'
 SHEET
 3 OF 3