

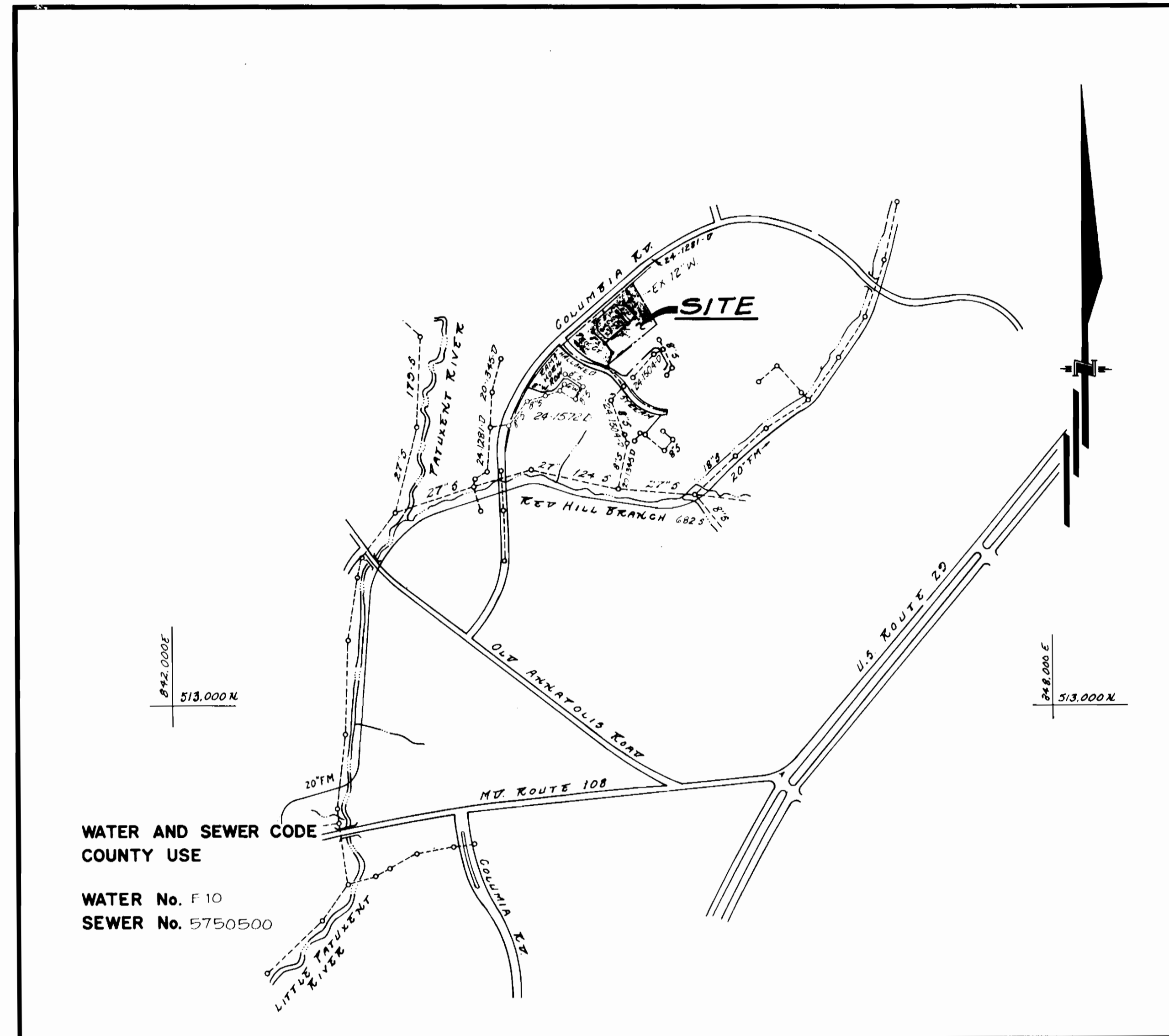
SEWER HOUSE CONNECTION TABLE					
LOTS	INV.@R	MIN. C.	LOTS	INV.@R	MIN. C.
C-143/C-144	327.46	332.7	C-188/C-189	337.60	342.9
C-145/C-146	332.88	343.1	C-190/C-191	338.73	341.4
C-147/C-148	332.86	343.1	C-192/C-193	336.62	339.8
C-149/C-150	340.42	343.6	C-194/C-195	334.22	337.5
C-151/C-152	332.74	342.2	C-196/C-197	334.63	337.2
C-153/C-154	332.04	342.2	C-198/C-199	336.87	340.2
C-155/C-156	338.12	341.3	C-200/C-201	337.37	342.4
C-157/C-158	336.68	339.7	C-202/C-203	341.83	345.1
C-159/C-160	335.74	338.7	C-204	342.44	345.7
C-161/C-162	334.85	338.0	C-205/C-206	352.14	355.5
C-163/C-164	334.58	337.8	C-207/C-208	350.67	354.1
C-165/C-166	333.17	336.4	C-209	349.46	352.6
C-167/C-168	331.74	334.9	C-210	348.26	351.4
C-169/C-170	330.42	333.6	C-211/C-212	347.86	350.6
C-171/C-172	330.17	333.4	C-213/C-214	347.16	350.3
C-173/C-174	330.30	333.5	C-215	347.00	350.2
C-175	329.22	333.1	C-216/C-217	346.27	349.6
C-176/C-177	329.76	333.0	C-218/C-219	344.80	348.1
C-178/C-179	328.22	332.1	C-220/C-221	343.31	346.6
C-180/C-181	328.52	331.8	C-222/C-223	347.31	350.7
C-182	328.39	331.8	C-224/C-225	348.85	352.3
C-183	328.65	331.9	C-226	350.10	353.4
C-184/C-185	328.48	331.7	C-227/C-228	350.84	354.1

TYPE OF BUILDING	TOWNHOUSE
NUMBER OF UNITS	41
NUMBER OF SHC's	41
NUMBER OF WHC's	41
DRAINAGE AREA	RT. 108 PUMPING STATION

GENERAL NOTES

- Approximate locations of existing mains are shown. The contractor shall take all necessary precautions to protect existing mains and services and maintain uninterrupted supply. Any damage incurred shall be repaired immediately to the satisfaction of the Engineer, at the contractor's expense.
- All horizontal controls are based on Maryland State Coordinates.
- All vertical controls are based on U.S.G.S. Datum.
- All pipe elevations shown are invert elevations.
- Clear all utilities by a minimum of 6". Clear all poles by 2'-0" minimum or tunnel as required. Any cost incurred by the contractor for tunneling or bracing at poles shall be included in unit prices bid for construction of the main.
- For details not shown on the drawings, use Howard County Standard Details.
- For materials and construction methods, use Howard County Standard Specifications & Howard County Design Manual, Volume IX. The Contractor shall have a copy of Volume IX on the job.
- Contractor shall locate existing utilities a minimum of two (2) weeks in advance of construction operations in the vicinity of proposed utilities, at his own expense.
- Contractor shall notify the following utilities or agencies at least five (5) working days before starting work shown on these plans.

State Highway Administration 531-5533	Baltimore Gas & Electric Company
"Miss Utility" 1-559-0100	Contractor Services 561-2585
Chesapeake & Potomac (CBP)	Underground Damage Control 234-5621
Telephone Company 725-9976	Trouble-shooting 298-9013
Colonial Pipeline Company 795-1390	Bureau of Utilities, Howard County 992-2366
- Trees are to be protected from damage to maximum extent. Trees located within the construction strip are not to be removed or damaged by the contractor.
- Contractor shall remove trees, stumps and roots along line of excavation as directed by the Engineer. Payment for such removal shall be included in the unit price bid for construction of the main.
- Place regulation "Men Working" and warning signs as required to comply with Maryland State Highway Administration Manual of Traffic Control for Highway Construction and Maintenance Operations.
- All water mains to be D.I.P. unless otherwise noted. Class 52 ONLY.
- Top of all water mains to have a minimum of 3-1/2' cover unless otherwise noted.
- Valves adjacent to tees shall be strapped to tees.
- Block all fittings with concrete.
- Bury line elevations on fire hydrants shall be set to the elevations shown on the drawings. All fire hydrants shall be strapped and buttressed with concrete in accordance with standard details. Soil around the fire hydrant to be compacted in accordance with Sections 10.03 and 10.08 of the Standard Specifications.
- All water house connections shall be for an inside meter setting.
- The contractor shall not operate any water main valves on the existing system.
- For all Copper Water House Connections, utilize flared type fittings only.
- All sewer mains shall be C.SPX, V.CPX, R.C.S.P, PVC or ACP - Class 2400 unless otherwise noted.
- The contractor shall provide a joint in all sewer mains within 2'-0" of exterior manhole wall.
- All manholes shall be 4'-0" inside diameter, unless otherwise noted.
- 12" and 16" manhole wall thicknesses shown on profiles pertain to brick manholes only.
- Manholes designated W.T. in plan and profile shall have watertight frames and covers. (See Standard Detail G.5.52) Where watertight manhole frame and cover is used, set top of frame 1'-6" above finished grade. (See Standard Detail G.5.41).
- House(s) with the symbol "CNS" indicates that cellar cannot be served.
- Water main and water house connection lines must have a minimum of one foot separation from either sanitary sewer or sewer house connections as they cross. Except at crossings, water and sewer lines shall have a minimum horizontal separation of 10'.
- Whenever a water or sewer crosses another utility or storm drain line, the water or sewer shall be built under the other line in place. See STD. DETAIL G.5.41.
- All D.I.P. fittings shall be in accordance with AWWA Specification C-113 ductile iron compact fittings, 3 inch through 12 inch for water and other liquids.



VICINITY MAP
SCALE: 1" = 600'

CONTRACT NO. 24-1761-D

DORSEY HALL

SECTION 2 AREA 2

**HOWARD COUNTY, MARYLAND
DEPARTMENT OF PUBLIC WORKS**

Sediment Control Measures will be implemented in accordance with SECTION 210 of the Specifications B with Road Construction Plan F 88-149; Drawings 4 & 5 Sediment & Erosion Control.

REVIEWED FOR HOWARD SOIL CONSERVATION DISTRICT AND MEETS TECHNICAL REQUIREMENT.

SIGNATURE DATE
U.S. SOIL CONSERVATION SERVICE

THIS DEVELOPMENT PLAN IS APPROVED FOR SOIL EROSION AND SEDIMENT CONTROL BY THE HOWARD SOIL CONSERVATION DISTRICT.

APPROVED: _____ DATE _____
HOWARD S.C.D.

QUANTITIES			
ITEM	ESTIMATED	AS-BUILT	MATERIAL / SUPPLIER
8"W	130 LF		
6"W	472 LF		
8"S	231 LF		
6" SHC	594 LF		
2" WHC	98 LF		
1" WHC	297 LF		
3/4" WHC	654 LF		
FH	2 EA.		
4" MH	2 EA.		
8" V	2 EA.		
6" V (EXCL. FH)	1 EA.		
18" F.F.S.V.	1 EA.		
8" D.C. TYPE "B"	1 EA.		
3" BLOW OFF	1 EA.		

DEPARTMENT OF PUBLIC WORKS
HOWARD COUNTY, MARYLAND

DIRECTOR OF PUBLIC WORKS DATE

CHIEF, BUREAU OF ENGINEERING DATE

CHIEF, BUREAU OF UTILITIES DATE

CHIEF, LAND DEVELOPMENT DIV. DATE

GLW GUTSCHICK LITTLE & WEBER, P.A.
ENGINEERS, PLANNERS, SURVEYORS

2808 NATIONAL DRIVE SUITE 250 BURTONTOWNE OFFICE PARK
BURTONTOWNE, MD. 20888
13011 421 - 4024

DES: _____
DRN: _____
CHK: CKG
DATE: DEC 1987

BY: _____
REVISION: _____
DATE: _____

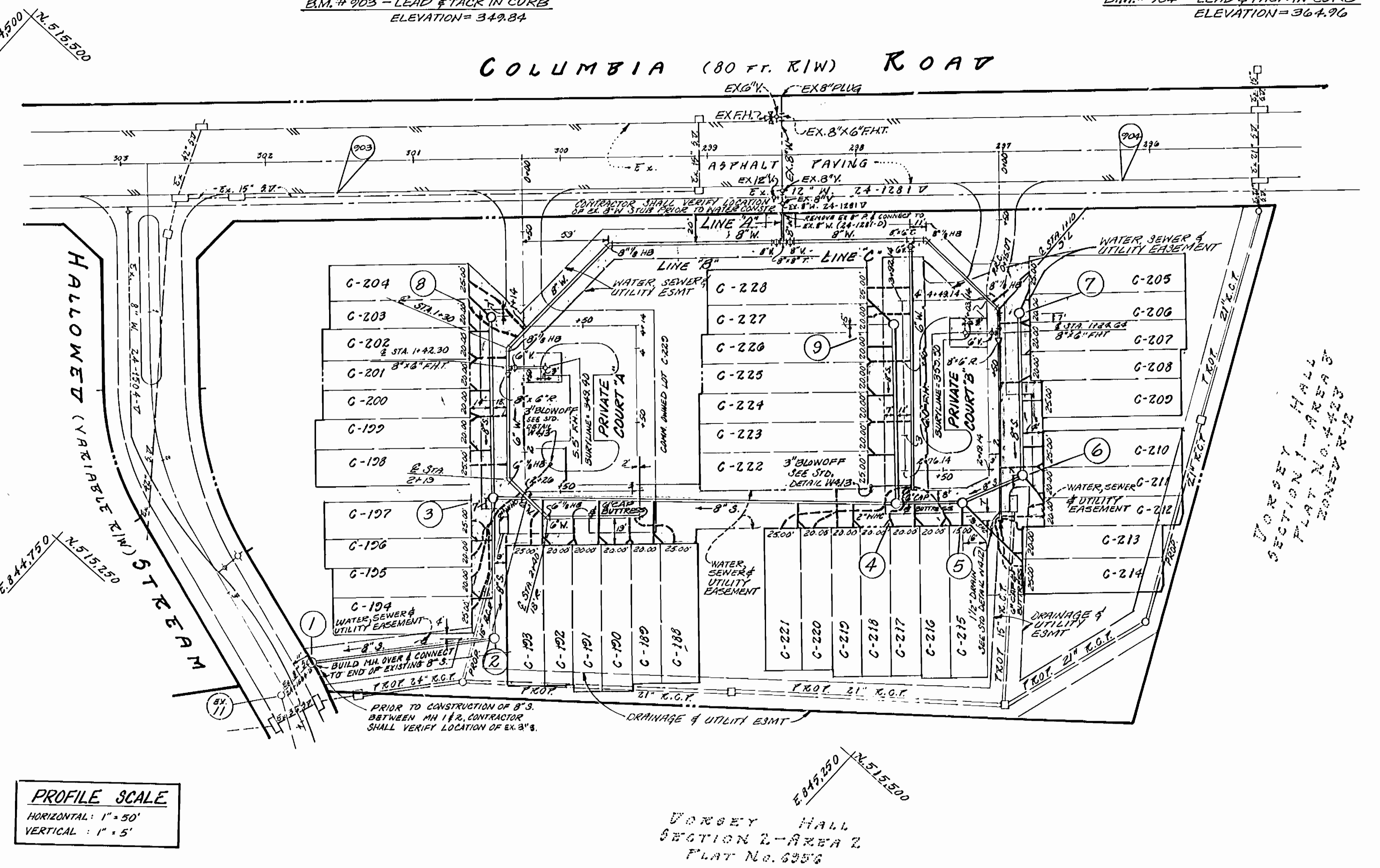
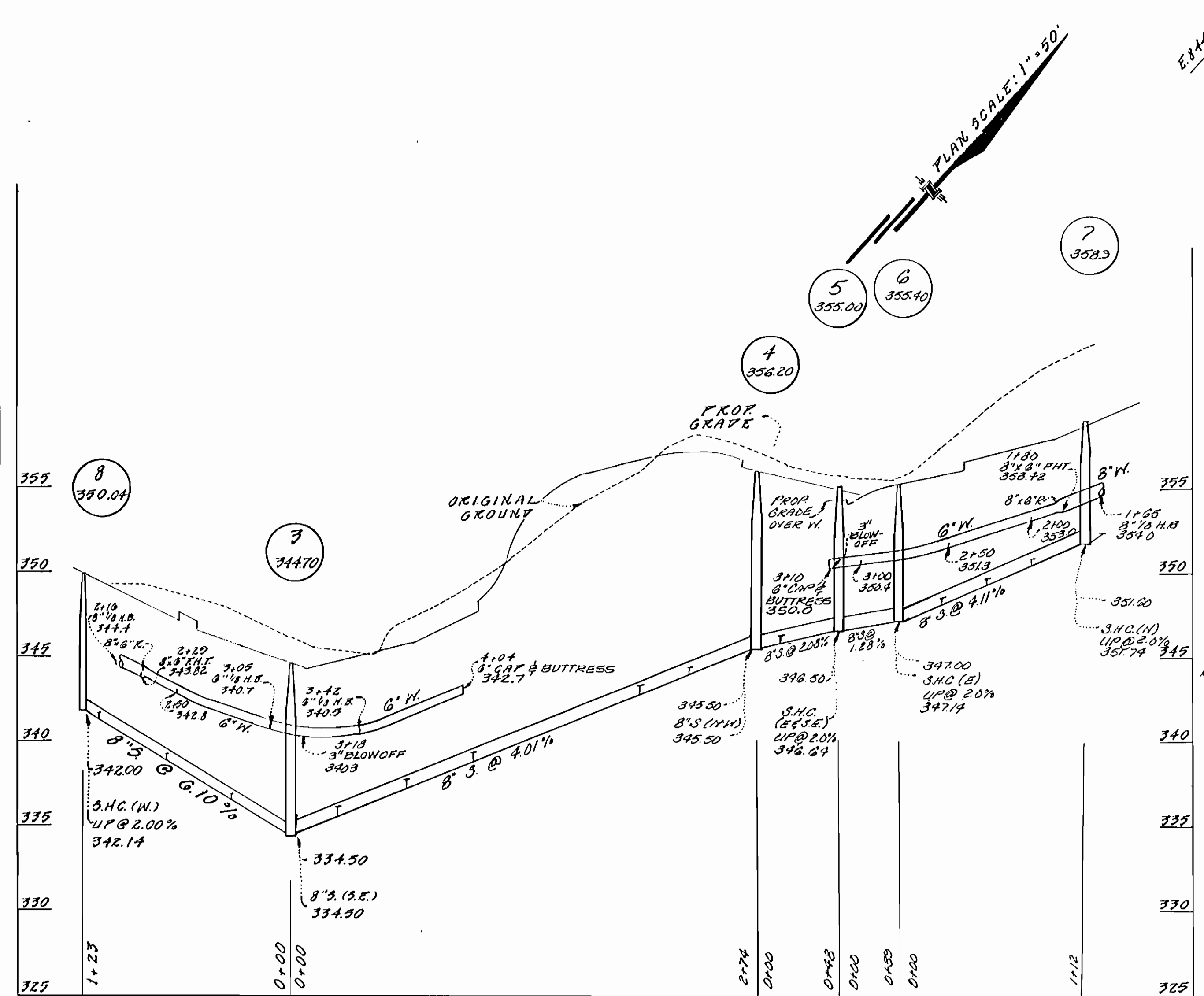
TITLE SHEET

FOOTSCALE MAP NO. 30 BLOCK NO. 1

DORSEY HALL
SECTION 2 AREA 2
LOTS C-188 THRU C-228
2ND ELECTION DISTRICT
CONTRACT NO. 24-1761-D

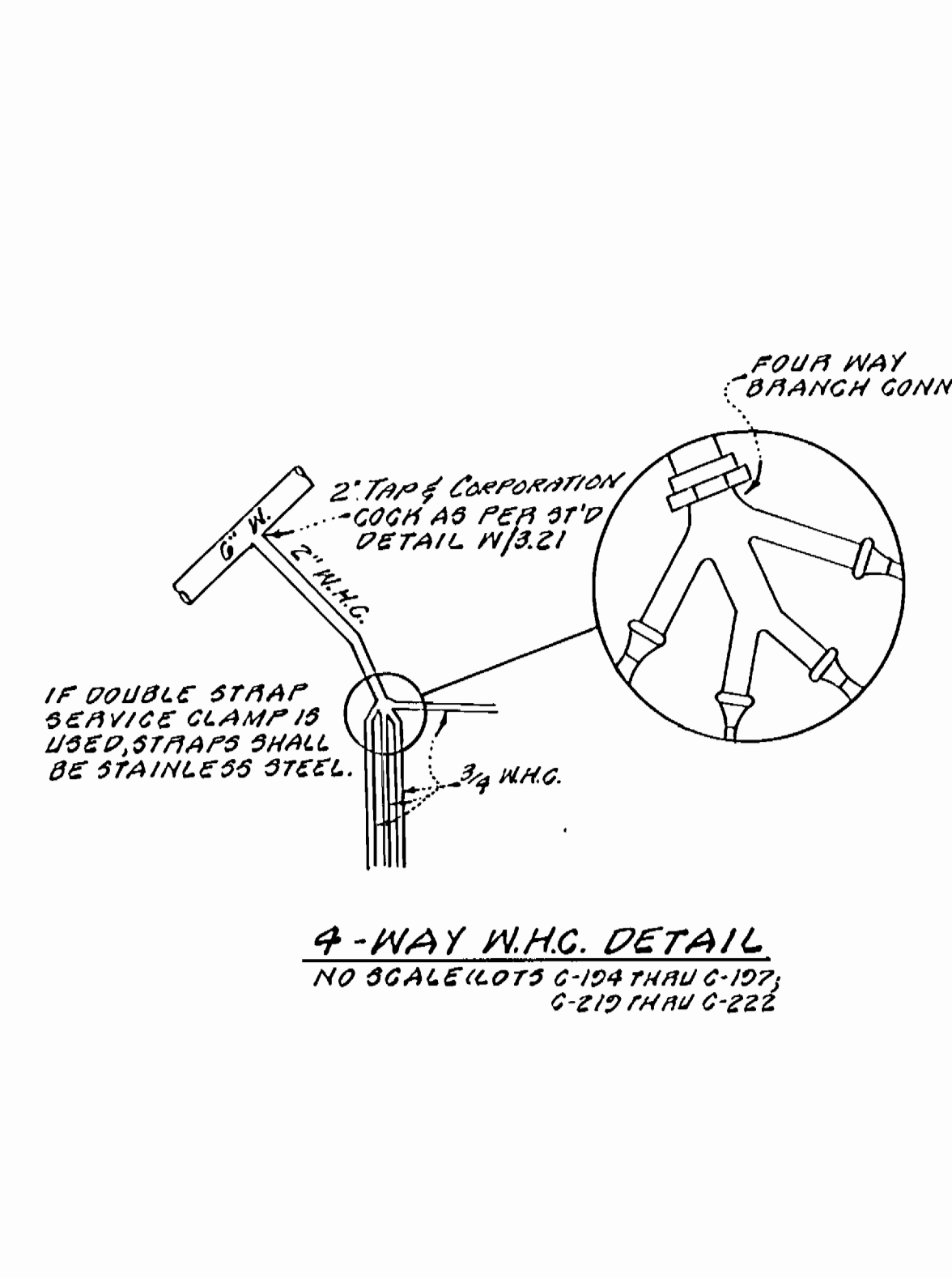
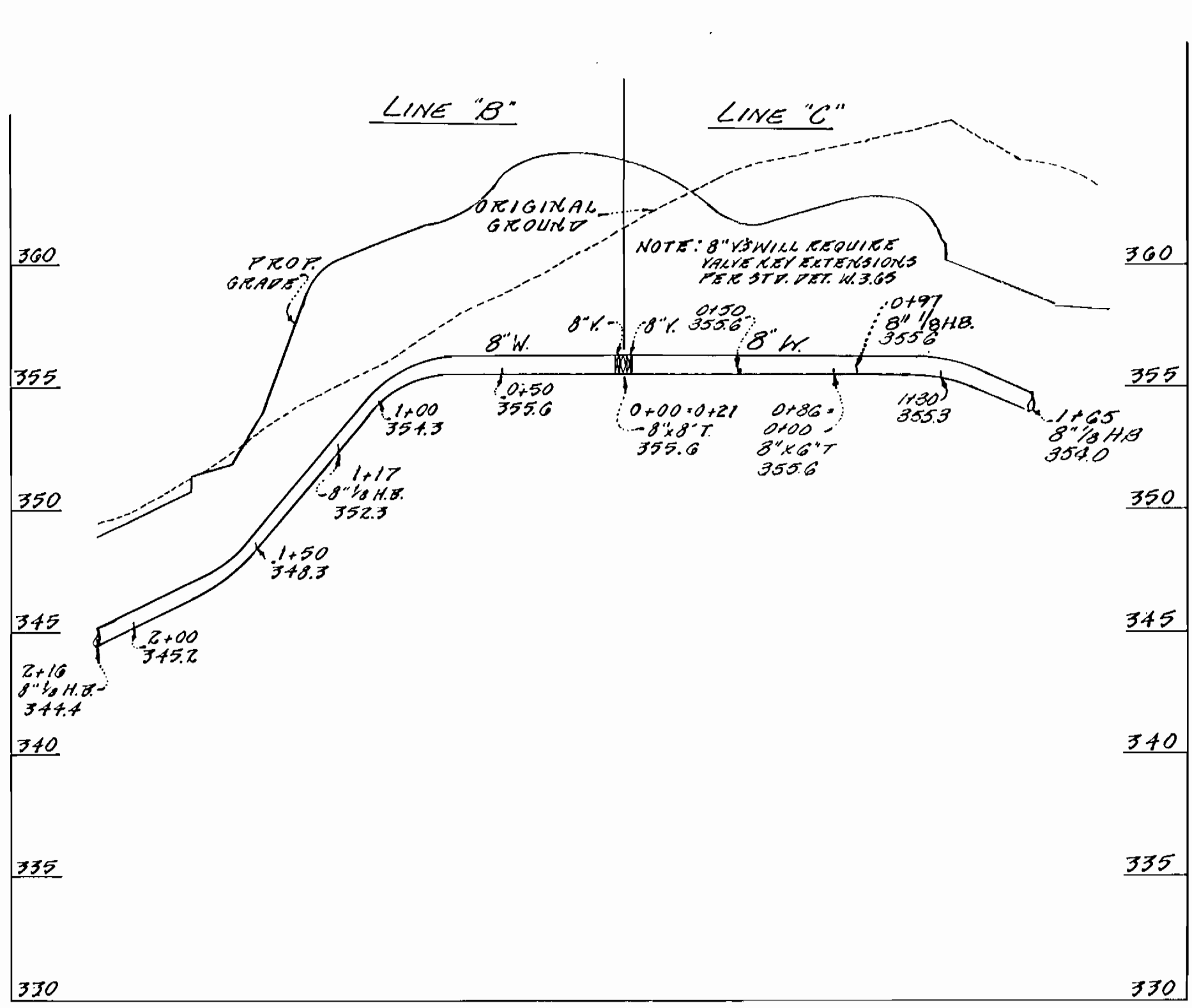
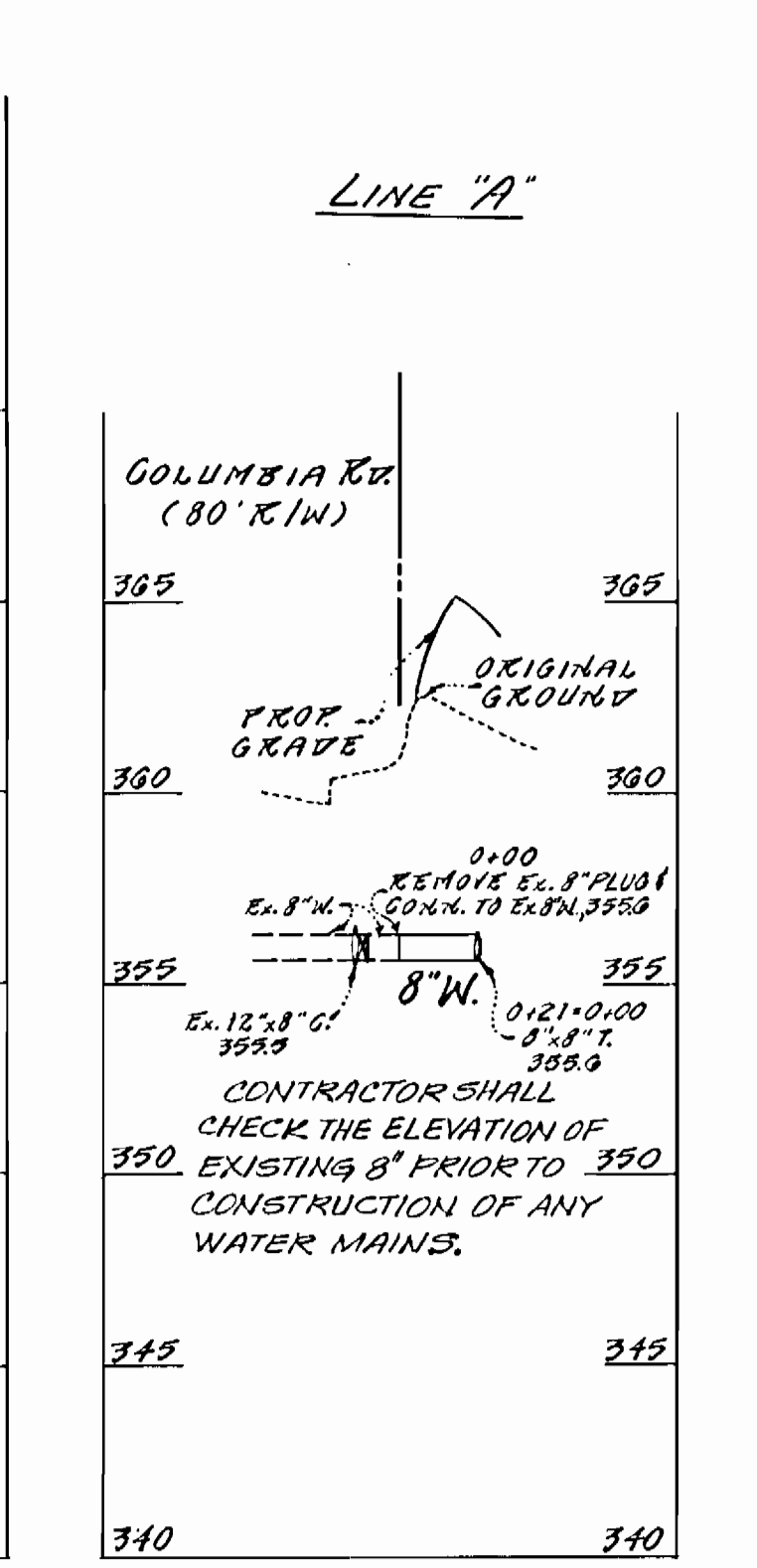
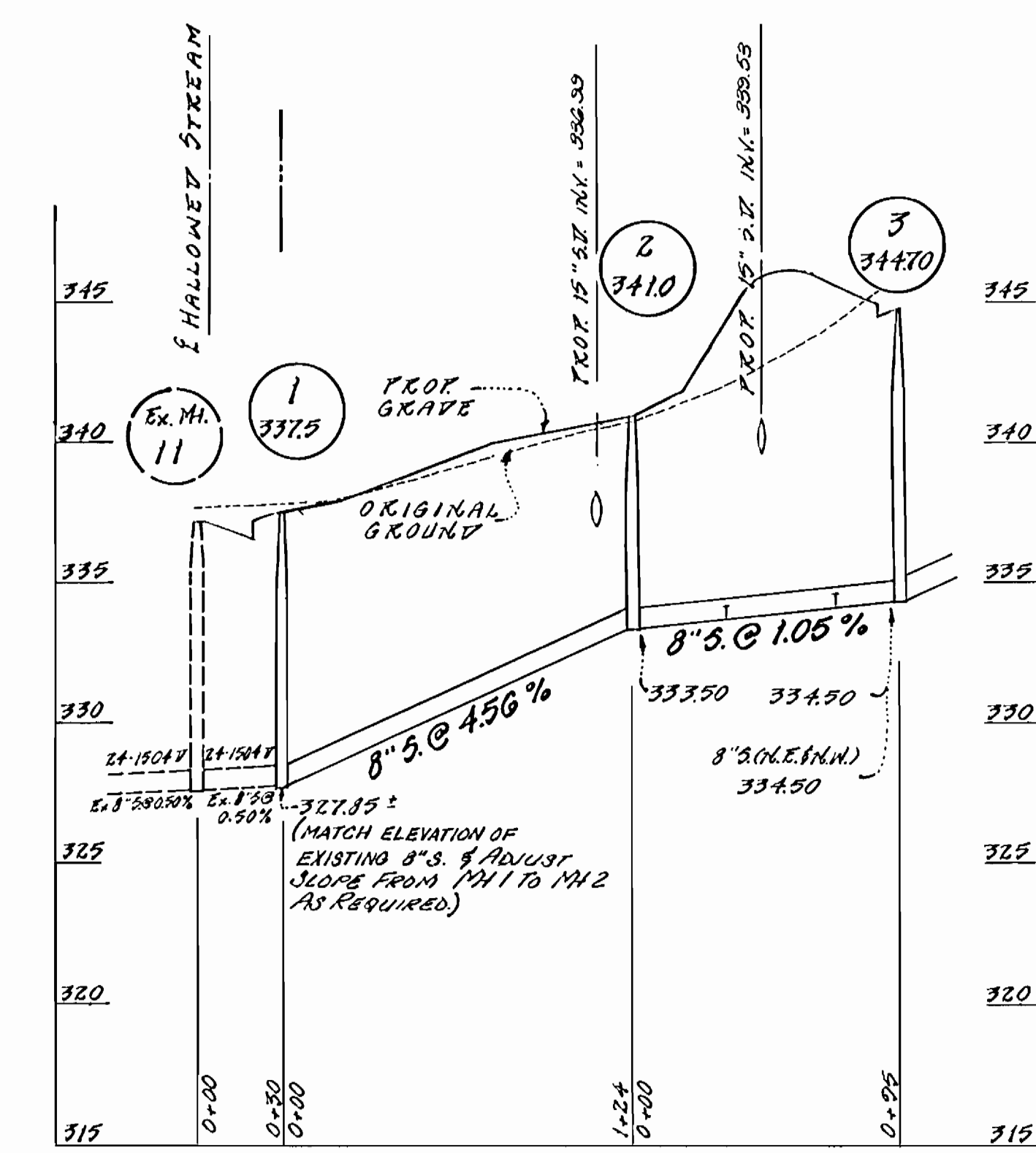
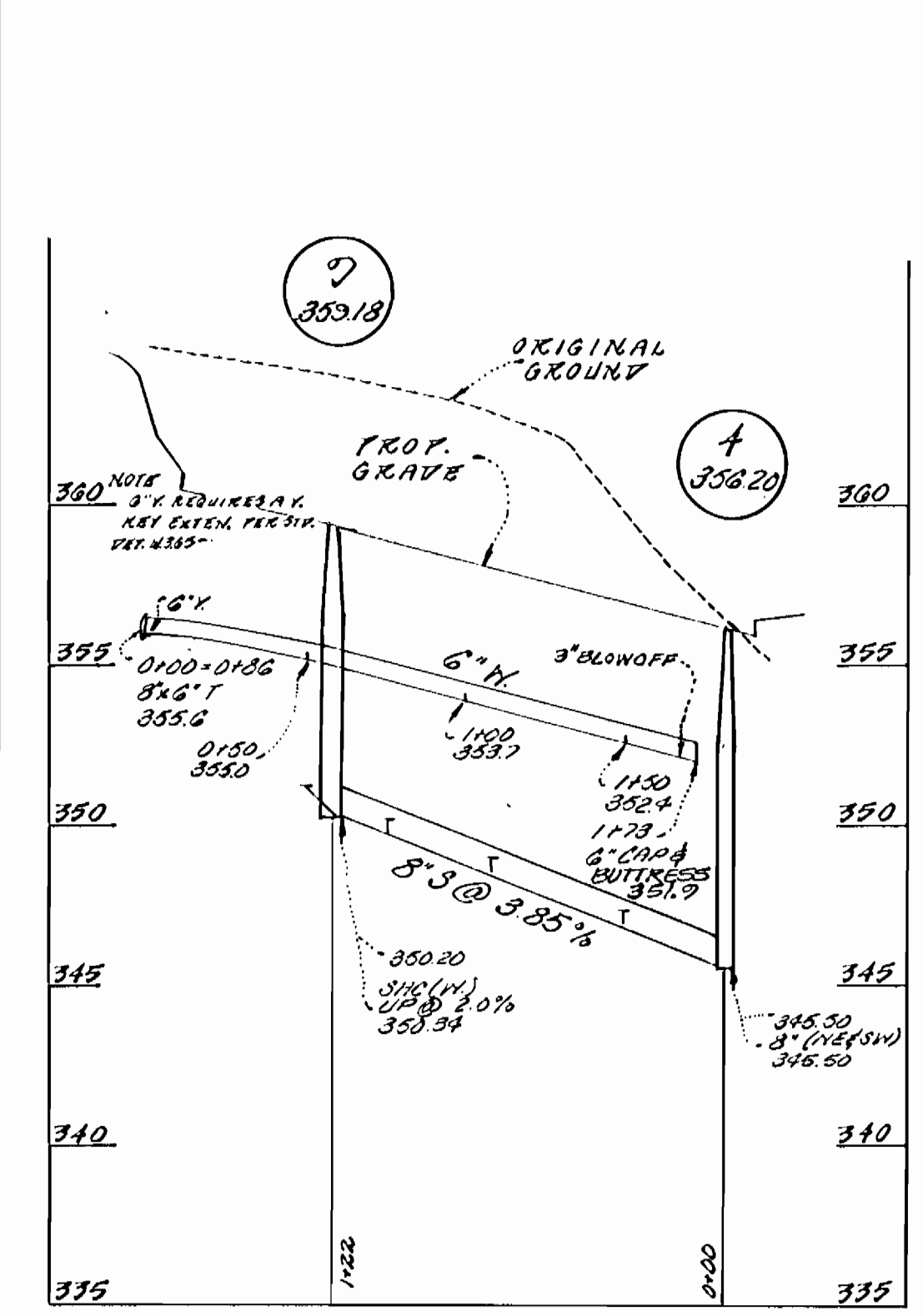
SCALE AS SHOWN
SHEET 2

COLUMBIA (80 FT. R/W) ROAD



PROFILE SCALE
HORIZONTAL: 1" = 50'
VERTICAL: 1" = 5'

DORSEY HALL
SECTION 2 - AREA 2
PLAT No. 6956



DEPARTMENT OF PUBLIC WORKS
HOWARD COUNTY, MARYLAND

James J. ... 3/1/88
DIRECTOR OF PUBLIC WORKS DATE

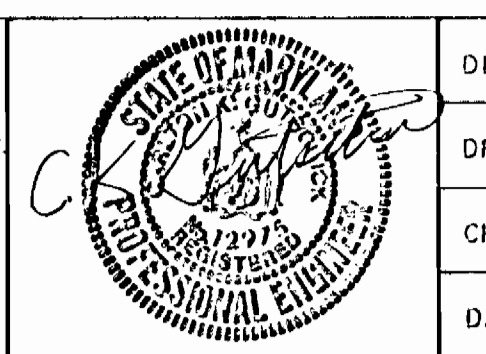
Robert M. ... 3-14-88
CHIEF, BUREAU OF UTILITIES DATE

William ... 3-17-88
CHIEF, BUREAU OF ENGINEERING DATE

Walter ... 3-17-88
CHIEF, LAND DEVELOPMENT DIV. DATE

GW GUTSCHICK LITTLE & WEBER, P.A.
ENGINEERS, PLANNERS, SURVEYORS

2909 NATIONAL DRIVE - SUITE 200 BURTNSVILLE OFFICE PARK
BURTNSVILLE, MD. 21018
(301) 421-1024



DES: C.K.G.					
DRN: G					
CHK: C.K.G.					
DEC. DATE: 1987					
BY NO.					
REVISION					
DATE					

PLAN & PROFILES OF WATER & SEWER MAINS

600' SCALE MAP NO. 30 BLOCK NO. 4

DORSEY HALL
SECTION 2 AREA 2
LOTS 188 THRU C-229
2ND ELECTION DISTRICT
CONTRACT NO. 24-1761-D

SCALE AS SHOWN
SHEET 2 OF 2

BRUNING

DEPARTMENT OF PUBLIC WORKS
HOWARD COUNTY, MARYLAND

DIRECTOR OF PUBLIC WORKS DATE CHIEF, BUREAU OF ENGINEERING DATE

DES:					
DRN:					
CHK:					
DATE:	BY	NO.	REVISION	DATE	

WATER ASBUILTS

600' SCALE MAP NO. BLOCK NO.

WATER ASBUILTS
DORSEY HALL
SECTION 2 AREA 2
LOTS 188 THRU C-229

CONTRACT NO. 24-1761-D 2A

SCALE AS SHOWN

SHEET OF

AS-BUILT 7/11/88

188
189
190
191
192
193
194
195
196
197
198
199
200
201
202
203
204
205
206
207
208
209
210
211
212
213
214
215
216
217
218
219
220
221
222
223
224
225
226
227
228
229

Handhole 8*	
Lot	Dis
C-204	87.0
C-205	19.0
C-206	31.0
C-207	35.2
C-208	69.5
C-198	75.4
C-198	104.5

Handhole 9	
Lot	Dis
C-204	147.1
C-205	135.5
C-202	100.0
C-201	95.1
C-200	40.0
C-199	55.0
C-198	26.3

Handhole 8*	
Lot	Dis
C-197	21.5
C-196	41.1
C-195	55.1
C-194	75.1

Handhole 2*	
Lot	Dis
C-197	151
C-196	62.1
C-195	35.1
C-194	25.5

Handhole 2*	
Lot	Dis
C-193	67.5
C-192	82.1
C-191	86.2
C-190	110.2
C-189	151
C-188	140.1

FHB 1*	
Lot	Dis
C-193	55.4
C-192	56.5
C-191	57.5
C-190	75.2
C-189	79.4
C-188	00.1

FHB #1	
Lot	Dis
C-204	77.5
C-203	68.5
C-202	53.5
C-201	52.5
C-200	60.1
C-199	57.5
C-198	85.1

FHB 1*	
Lot	Dis
C-197	67.5
C-196	40.2
C-195	19.2
C-194	111.3

Handhole 2*	
Lot	Dis
C-193	41.2
C-192	60.5
C-191	45.1
C-190	95.0
C-189	100.1
C-188	125.2

Handhole 4*	
Lot	Dis
C-208	150.0
C-227	130.1
C-226	100.1
C-225	97.5
C-224	60.1
C-223	55.1
C-222	45.1

Handhole 4*	
Lot	Dis
C-221	82.1
C-220	59.5
C-219	47.1
C-218	19.8
C-217	19.5
C-216	35.2
C-215	40.1

FH #2	
Lot	Dis
C-228	174.3
C-227	67.5
C-226	69.3
C-225	70.2
C-224	87.1
C-223	106.0
C-222	138.2

Handhole 5*	
Lot	Dis
C-221	126.1
C-220	105.2
C-219	89.5
C-218	56.5
C-217	53.2
C-216	21.3
C-215	18.4

FH #2	
Lot	Dis
C-205	61.2
C-206	47.3
C-207	51.2
C-208	58.2
C-209	60.5

FHB #2	
Lot	Dis
C-201	71.2
C-220	49.5
C-219	35.2
C-218	30.1
C-217	32.5
C-216	55.1
C-215	62.0

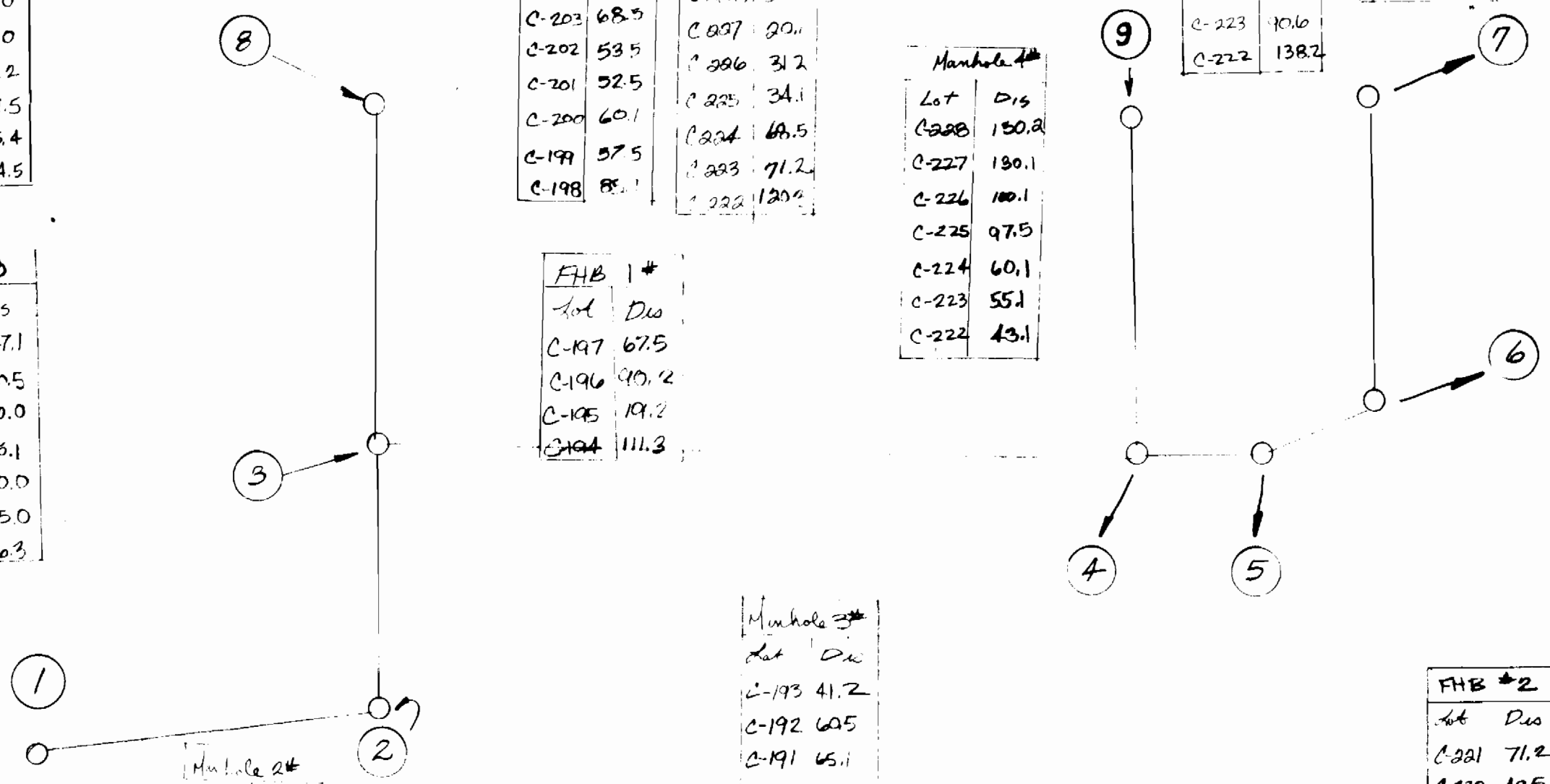
Handhole 5*	
Lot	Dis
C-210	64.0
C-211	61.0
C-212	55.3
C-213	46.3
C-214	61.2

Handhole 6	
Lot	Dis
C-205	91.0
C-206	10.5
C-207	4.5
C-208	45.0
C-209	50.1

Handhole 6	
Lot	Dis
C-205	139.9
C-206	109.2
C-207	103.3
C-208	70.1
C-209	67.1

Handhole 6*	
Lot	Dis
C-210	176
C-211	15.4
C-212	89.5
C-213	37.5
C-214	63.2

Handhole 6*	
Lot	Dis
C-210	107.2
C-211	106.3
C-212	100.1
C-213	89.9
C-214	95.4



PH 2	Lot	Dis
C-205	53.1	
C-206	53.0	
C-207	47	
C-208	50	
C-209	72	

INLET 3	Lot	Dis
C-205	116	
C-206	111	
C-207	111	
C-208	125	
C-209	102	

Manhole B	Lot	Dis
C-204	17	
C-203	17	
C-202	19	
C-201	49	
C-200	51	
C-199	37	
C-198	50	

PH 1*	Lot	Dis
C-228	68	
C-227	70	
C-226	98	
C-225	98	
C-224	77	
C-223	80	
C-222	75	
C-221	100	
C-220	108	

Manhole A	Lot	Dis
C-228	154	
C-227	150	
C-226	125	
C-225	100	
C-224	97	
C-223	100	
C-222	97	

Manhole B	Lot	Dis
C-207	81	
C-206	85	
C-205	51	

Manhole B	Lot	Dis
C-204		
C-203		
C-202		
C-201		
C-200		
C-199	37	
C-198	36	

Inlet 3	Lot	Dis
C-205	107	
C-206	120	
C-207	122	
C-208	150	
C-209	154	

Manhole 3	Lot	Dis
C-197	28	
C-196	33	
C-195	47	
C-194	50	

Manhole 2	Lot	Dis
C-192	70	
C-191	74	
C-190	90	
C-189	94	
C-188	125	
C-187	127	

Manhole 2	Lot	Dis
C-197	67	
C-196	62	
C-195	31	
C-194	31	

Inlet 1	Lot	Dis
C-183	140	
C-182	158	
C-181	132	
C-180	130	
C-179	115	
C-178	112	

PH 1	Lot	Dis
C-220	67	
C-221	67	
C-222	67	

A-10 2*	Lot	Dis
C-183	105	
C-182	105	
C-181	68	
C-180	65	
C-179	40	

Manhole 2	Lot	Dis
C-183	96	
C-182	91	

DEPARTMENT OF PUBLIC WORKS
HOWARD COUNTY, MARYLAND

DIRECTOR OF PUBLIC WORKS _____ DATE _____ CHIEF, BUREAU OF ENGINEERING _____ DATE _____

DES:				
DRN:				
CHK:				
DATE:				

SEWER ABUILTS.

DORSEY HALL
SECTION 2 AREA 2
LOTS 180 THRU C-228

SCALE AS SHOWN
SHEET 23 OF