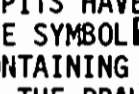
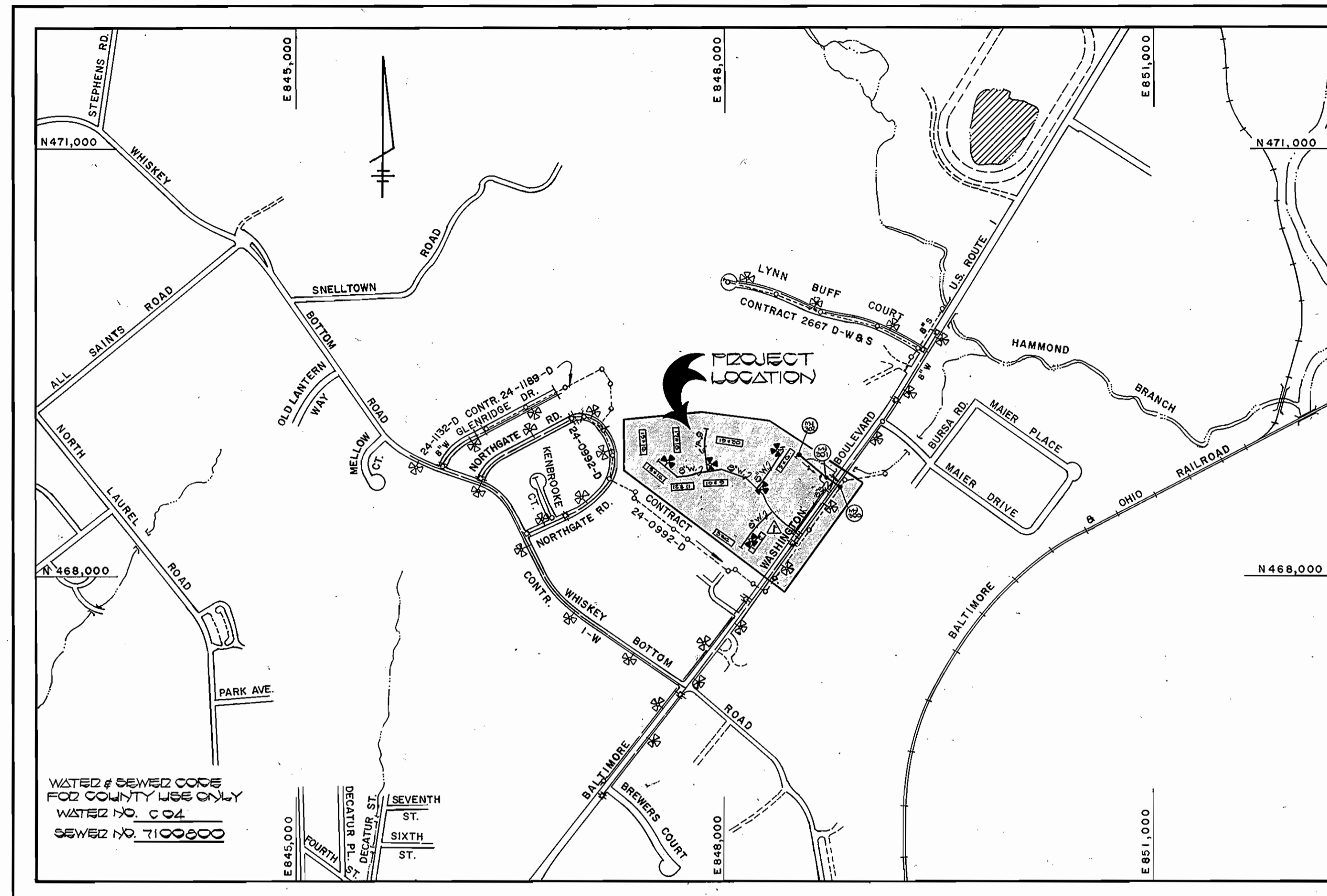


GENERAL NOTES

- APPROXIMATE LOCATION OF EXISTING MAINS ARE SHOWN. THE CONTRACTOR SHALL TAKE ALL NECESSARY PRECAUTIONS TO PROTECT EXISTING MAINS AND SERVICES AND MAINTAIN UNINTERRUPTED SUPPLY. ANY DAMAGE INCURRED SHALL BE REPAIRED IMMEDIATELY TO THE SATISFACTION OF THE ENGINEER AT THE CONTRACTOR'S EXPENSE.
- ALL HORIZONTAL CONTROLS ARE BASED ON MARYLAND COORDINATES.
- ALL VERTICAL CONTROLS ARE BASED ON U.S.G.S. DATUM.
- ALL PIPE ELEVATIONS SHOWN ARE INVERT ELEVATIONS.
- CLEAR ALL UTILITIES BY A MINIMUM OF 6".
- FOR DETAILS NOT SHOWN ON THE DRAWINGS, AND FOR MATERIALS AND CONSTRUCTION METHODS, USE HOWARD COUNTY DESIGN MANUAL, VOLUME IV, STANDARD SPECIFICATIONS AND DETAILS FOR CONSTRUCTION. THE CONTRACTOR SHALL HAVE A COPY OF VOLUME IV ON THE JOB.
- WHERE TEST PITS HAVE BEEN MADE ON EXISTING UTILITIES, THEY ARE NOTED BY THE SYMBOL  AT THE LOCATION OF THE TEST PIT. A NOTE OR NOTES CONTAINING THE RESULTS OF THE TEST PIT OR PITS IS INCLUDED ON THE DRAWINGS. EXISTING UTILITIES IN THE VICINITY OF THE PROPOSED WORK FOR WHICH TEST PITS HAVE NOT BEEN DUG SHALL BE VERIFIED BY THE CONTRACTOR TO HIS OWN SATISFACTION. ANY DAMAGE TO EXISTING FACILITIES DUE TO THE CONTRACTOR'S NEGLIGENCE SHALL BE REPAIRED AT THE CONTRACTOR'S EXPENSE.
- CONTRACTOR SHALL NOTIFY THE FOLLOWING UTILITIES OR AGENCIES AT LEAST FIVE WORKING DAYS BEFORE STARTING WORK SHOWN ON THESE PLANS:
 - STATE HIGHWAY ADMINISTRATION : 531-5533
 - BALTIMORE GAS & ELECTRIC CO.-CONTRACTOR SERVICES: 850-4620
 - BALTIMORE GAS & ELECTRIC CO. UNDERGROUND DAMAGE CONTROL: 859-9004
 - BALTIMORE GAS & ELECTRIC CO. TROUBLE SHOOTING: 298-9001
 - MISS UTILITY: 1-559-0100
 - COLONIAL PIPELINE COMPANY: 795-1390
 - BUREAU OF UTILITIES, HOWARD COUNTY DEPARTMENT OF PUBLIC WORKS: 992-2366
 - C&P TELEPHONE COMPANY: 1-800-257-7777
- TREES AND SHRUBS ARE TO BE PROTECTED FROM DAMAGE TO MAXIMUM EXTENT. TREES AND SHRUBS LOCATED WITHIN THE CONSTRUCTION STRIP ARE NOT TO BE REMOVED OR DAMAGED BY THE CONTRACTOR.
- CONTRACTOR SHALL REMOVE TREES, STUMPS AND ROOTS ALONG LINE OF EXCAVATION. PAYMENT FOR SUCH REMOVAL SHALL BE INCLUDED IN THE UNIT PRICE BID FOR CONSTRUCTION OF THE MAIN.
- ALL WATER MAINS TO BE D.I.P. CLASS 52 UNLESS OTHERWISE NOTED.
- TOPS OF ALL WATER MAINS TO HAVE A MINIMUM OF 3-1/2' COVER UNLESS OTHERWISE NOTED.
- VALVES ADJACENT TO TEES SHALL BE STRAPPED TO TEES.
- ALL FITTINGS SHALL BE BUTTRESSED OR ANCHORED WITH CONCRETE IN ACCORDANCE WITH THE STANDARD DETAILS UNLESS OTHERWISE PROVIDED FOR ON THE DRAWINGS.
- FIRE HYDRANTS SHALL BE SET TO THE BURY LINE ELEVATIONS SHOWN ON THE DRAWINGS. ALL FIRE HYDRANTS SHALL BE STRAPPED AND BUTTRESSED WITH CONCRETE IN ACCORDANCE WITH STANDARD DETAILS. SOIL AROUND THE FIRE HYDRANT SHALL BE COMPACTED IN ACCORDANCE WITH SECTION 1003 AND 1008 OF THE STANDARD SPECIFICATIONS.
- THE CONTRACTOR SHALL NOT OPERATE ANY WATER MAIN VALVES ON THE EXISTING WATER SYSTEM.
- ALL WATER HOUSE CONNECTIONS SHALL BE FOR INSIDE METER SETTING, UNLESS OTHERWISE NOTED ON THE PLANS OR IN THE SPECIFICATIONS. (STD. DETAIL W.3.24). DOMESTIC METERS ARE 2" SETTINGS & FIRE SERVICES ARE 1 1/2" SETTINGS.
- WATER MAINS AND WATER HOUSE CONNECTION LINES MUST BE PLACED SO AS TO HAVE AT LEAST ONE (1) FOOT SEPARATION FROM THE SEWER MAIN OR SEWER HOUSE CONNECTION AS THEY PASS ABOUT IT.
- MANHOLES DESIGNATED W.T. IN PLAN AND PROFILE SHALL HAVE WATER-TIGHT FRAME AND COVERS, STANDARD DETAIL 65.52 WHERE WATERTIGHT MANHOLE FRAME AND COVER IS USED, SET TOP OF FRAME 1'-6" ABOVE FINISHED GRADE UNLESS OTHERWISE NOTED ON THE DRAWINGS.
- ALL SEWER MAINS SHALL BE C.S.P.X., R.C.S.P., V.C.P.X., A.C.P. CLASS 2400 OR P.V.C. UNLESS OTHERWISE NOTED.
- THE CONTRACTOR SHALL PROVIDE A JOINT IN ALL SEWER MAINS WITHIN 2'-0" OF EXTERIOR MANHOLE WALL.
- ALL MANHOLES SHALL BE 4'-0" INSIDE DIAMETER UNLESS OTHERWISE NOTED.
- MANHOLES SHOWN WITH 12" AND 16" WALLS ARE FOR BRICK MANHOLES ONLY.
- MANHOLES LOCATED WITHIN PROPOSED ROADWAY SHALL HAVE STANDARD HEAVY TRAFFIC MANHOLE FRAME AND COVER, STANDARD DETAIL 65.51.
- ALL DIP FITTINGS SHALL BE IN ACCORDANCE WITH AWWA SPECIFICATION C-153 DUCTILE IRON COMPACT FITTINGS, 3" THROUGH 12" FOR WATER AND OTHER LIQUIDS.

QUANTITIES			
ITEM	EST'D	AS-BUILT	SUPPLIER
6" WATER	2275 L.F.	2284 L.F.	ATLANTIC PIPE
6" WATER	85 L.F.	91 L.F.	ATLANTIC PIPE
4" WATER	70 L.F.	70 L.F.	ATLANTIC PIPE
6" WATER	10 L.F.	37 L.F.	BEP WATER SUPPLY
6" SEWER	250 L.F.	257 L.F.	ATLANTIC PIPE
6" SEWER (G.I.P)	120 L.F.	116 L.F.	ATLANTIC PIPE
MANHOLES	3 EA.	3 EA.	ATLANTIC PRECAST
FIRE HYD.	5 EA.	5 EA.	MULLER CO.
2" VALVES	1 EA.	1 EA.	AMERICAN SARUM
4" VALVES	5 EA.	7 EA.	MULLER CO.
6" VALVES	7 EA.	7 EA.	MULLER CO.

NOTE: CONTRACTOR SHALL VERIFY QUANTITIES TO HIS OWN SATISFACTION PRIOR TO BIDDING



WATER & SEWER CODES FOR COUNTY USE ONLY
WATER NO. C04
SEWER NO. T100000

TYPE OF BUILDING	APARTMENTS
NUMBER OF LOTS	1
NO. OF WATER HOUSE CONNECTIONS	10
NO. OF SEWER HOUSE CONNECTIONS	1
DRAINAGE AREA	LITTLE PATUXENT

SCALE: 1" = 600'

CONTRACT NO. 24-1704-D

COUNTRY MEADOWS

PARCEL 'A'

WATER AND SEWER MAIN EXTENSIONS

HOWARD COUNTY, MARYLAND

DEPARTMENT OF PUBLIC WORKS

PLAN DEFERENCE NUMBER F80-44 * SEP 88-88

SEDIMENT CONTROL MEASURES FOR THIS CONTRACT WILL BE IMPLEMENTED IN ACCORDANCE WITH SECTION 219 OF THE HOWARD COUNTY DESIGN MANUAL AND STANDARDS AND SPECIFICATIONS FOR SOIL EROSION AND SEDIMENT CONTROL IN DEVELOPING AREAS AND ALSO AS SHOWN ON THE GRADING AND SEDIMENT CONTROL PLAN F80-44 * SEP 88-88

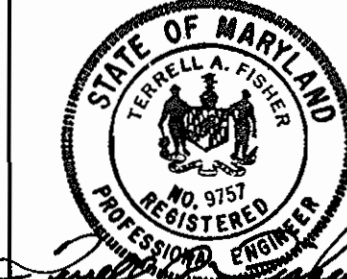
REVIEWED FOR HOWARD COUNTY SOIL CONSERVATION DISTRICT AND MEETS TECHNICAL REQUIREMENTS.

James M. Hill 2-23-88
DATE

THIS DEVELOPMENT PLAN IS APPROVED FOR EROSION AND SEDIMENT CONTROL BY HOWARD SOIL CONSERVATION DISTRICT.

APPROVED:
Stephen L. Hader 2/23/88
DATE

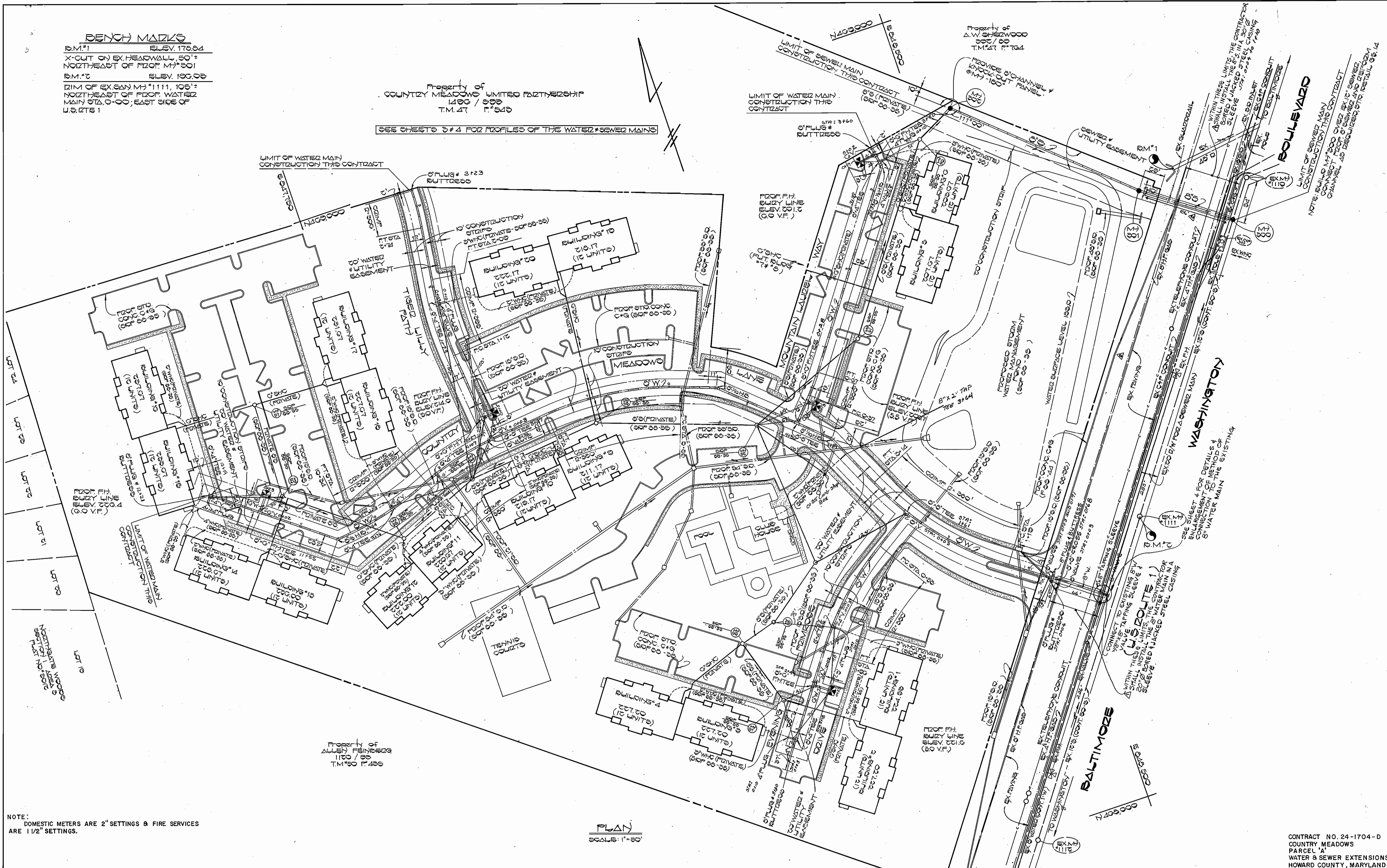
CONTRACT NO. 24-1704-D
COUNTRY MEADOWS
PARCEL 'A'
WATER & SEWER EXTENSIONS
HOWARD COUNTY, MARYLAND

<p>DEPARTMENT OF PUBLIC WORKS HOWARD COUNTY, MARYLAND</p> <p><i>James M. Hill</i> 1/28/88 DIRECTOR OF PUBLIC WORKS DATE</p> <p><i>Robert M. Bennett</i> 1-26-88 CHIEF, BUREAU OF UTILITIES DATE</p>	<p>FISHER, COLLINS, AND CARTER, INC. CONSULTING ENGINEERS AND LAND SURVEYORS 8388 COURT AVENUE ELLCOTT CITY, MARYLAND 21043</p> <p><i>Terrell A. Fisher</i> DATE</p>		<p>DES: D.B.S.</p> <p>DRN: D.B.S.</p> <p>CHK: P.W.L.</p> <p>DATE: 8/6/87</p>	<p>REVISION</p> <p>1. REVISE QUANTITIES 8/25/88</p> <p>2. CONNECT FROM 8" W TO EX. 8" W 8/25/88</p>	<p>TITLE SHEET</p> <p>600' SCALE MAP NO. 47 BLOCK NO.</p>	<p>COUNTRY MEADOWS PARCEL 'A' CONTRACT NO. 24-1704-D SIXTH ELECTION DISTRICT HOWARD COUNTY, MARYLAND</p>	<p>SCALE AS SHOWN</p> <p>SHEET 1 OF 4</p>
-----------------------------------------------------------------------------------------------------------------------------------------------------------------------------------------------------------------	--------------------------------------------------------------------------------------------------------------------------------------------------------------------------------------	---------------------------------------------------------------------------------------	------------------------------------------------------------------------------	-----------------------------------------------------------------------------------------------------	-----------------------------------------------------------	--------------------------------------------------------------------------------------------------------------------------	-------------------------------------------

BENCH MARKS
 B.M.#1 ELEV. 178.84
 X-CUT ON EX. HEADWALL, 50'±
 NORTHEAST OF FZOP MH#301
 B.M.#2 ELEV. 190.98
 DIM OF EX. SAN. MH#1111, 106'±
 NORTHEAST OF FZOP. WATER
 MAIN STA. 0+00; EAST SIDE OF
 U.S. 27E1

Property of
 COUNTRY MEADOWS LIMITED PARTNERSHIP
 1400 / 88
 T.M. 27 P. 528

SEE SHEETS 3 & 4 FOR PROFILES OF THE WATER & SEWER MAINS



NOTE:
 DOMESTIC METERS ARE 2" SETTINGS & FIRE SERVICES
 ARE 1 1/2" SETTINGS.

PLAN
 SCALE: 1"=50'

CONTRACT NO. 24-1704-D
 COUNTRY MEADOWS
 PARCEL 'A'
 WATER & SEWER EXTENSIONS
 HOWARD COUNTY, MARYLAND

DEPARTMENT OF PUBLIC WORKS
 HOWARD COUNTY, MARYLAND
 Director of Public Works: [Signature] DATE: 11/26/88
 Chief, Bureau of Engineering: [Signature] DATE: 1-27-88
 Chief, Bureau of Utilities: [Signature] DATE: 1-26-88
 Chief, Land Development Division: [Signature] DATE: 1-28-88

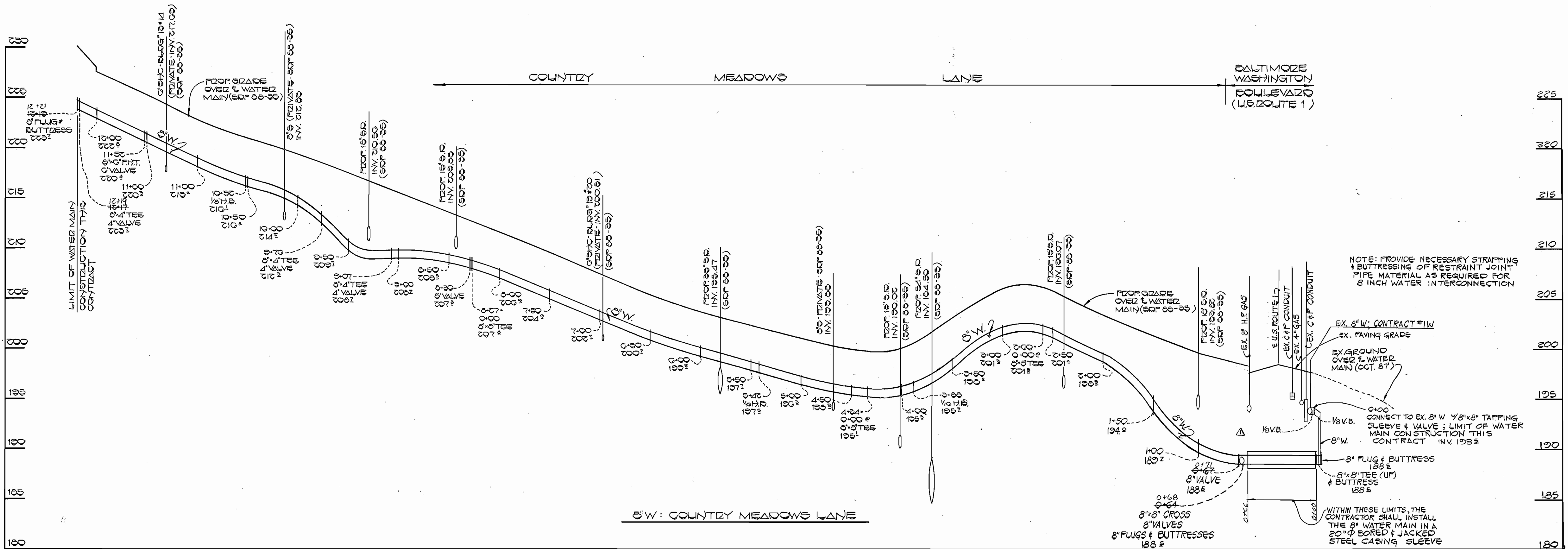
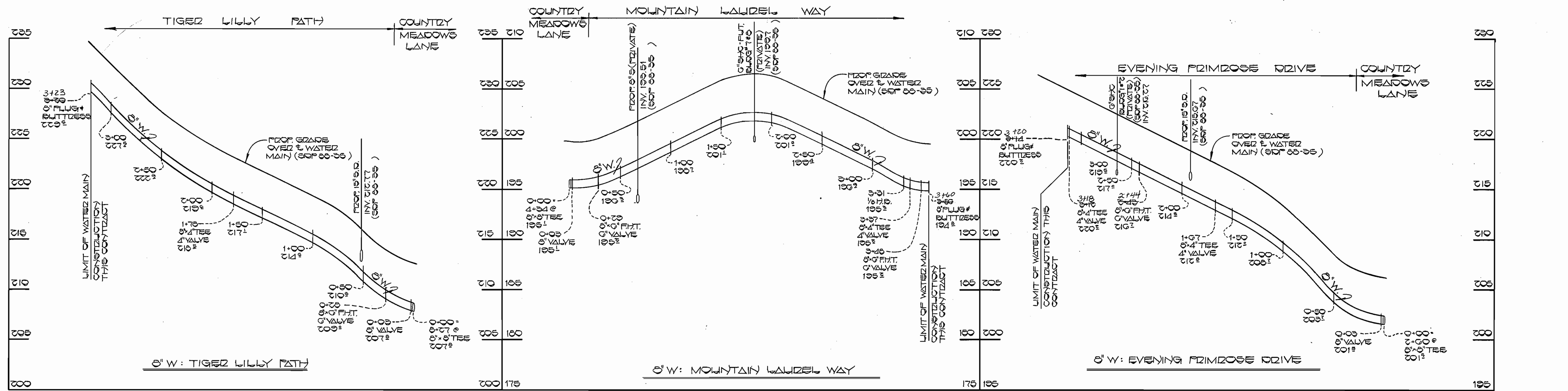
FISHER, COLLINS, AND CARTER, INC.
 CONSULTING ENGINEERS AND LAND SURVEYORS
 8388 COURT AVENUE
 ELLICOTT CITY, MARYLAND 21043
 State of Maryland Seal: [Seal]
 Terrell A. Fisher DATE: 8/10/87

DES: D.B.S.					
DRN: D.B.S.					
CHK: F.W.K.	D.A.K.	DELETED 8" WATER	8/25/88		
DATE: 8/10/87	D.A.K.	ADD STEEL CHIMNEY SLEEVE	8/25/88		
BY NO.		REVISION	DATE		

PLAN
 WATER AND SEWER MAINS
 600' SCALE MAP NO. 47 BLOCK NO.

COUNTRY MEADOWS
 PARCEL 'A'
 CONTRACT NO. 24-1704-D
 51'XTH ELECTION DISTRICT
 HOWARD COUNTY, MARYLAND
 SCALE AS SHOWN
 SHEET 3 OF 4

SEE SHEET 2 FOR PROFILES OF WATER MAINS



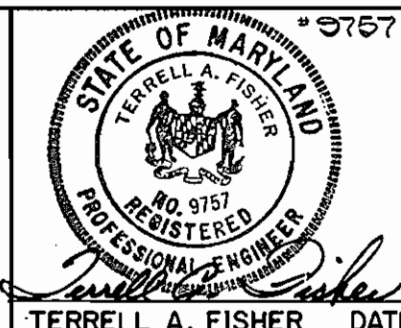
PROFILES
SCALE: HOR. 1" = 50'
VERT. 1" = 5'

CONTRACT NO. 24-1704-D
COUNTRY MEADOWS
PARCEL 'A'
WATER AND SEWER EXTENSIONS
HOWARD COUNTY, MARYLAND

DEPARTMENT OF PUBLIC WORKS
HOWARD COUNTY, MARYLAND

Director of Public Works: *[Signature]* 1/28/88
 Chief, Bureau of Utilities: *[Signature]* 1-26-88
 Chief, Bureau of Engineering: *[Signature]* 2/20/88
 Chief, Land Development Division: *[Signature]* 1-29-88

FISHER, COLLINS, AND CARTER, INC.
CONSULTING ENGINEERS AND LAND SURVEYORS
8388 COURT AVENUE
ELLCOTT CITY, MARYLAND 21043



DES: D.B.S.					
DRN: D.B.S.					
CHK: T.A.F.					
DATE: 8/6/87	D.A.N.	Δ	REVISE PROFILE		8/25/88
	BY	NO.	REVISION		DATE

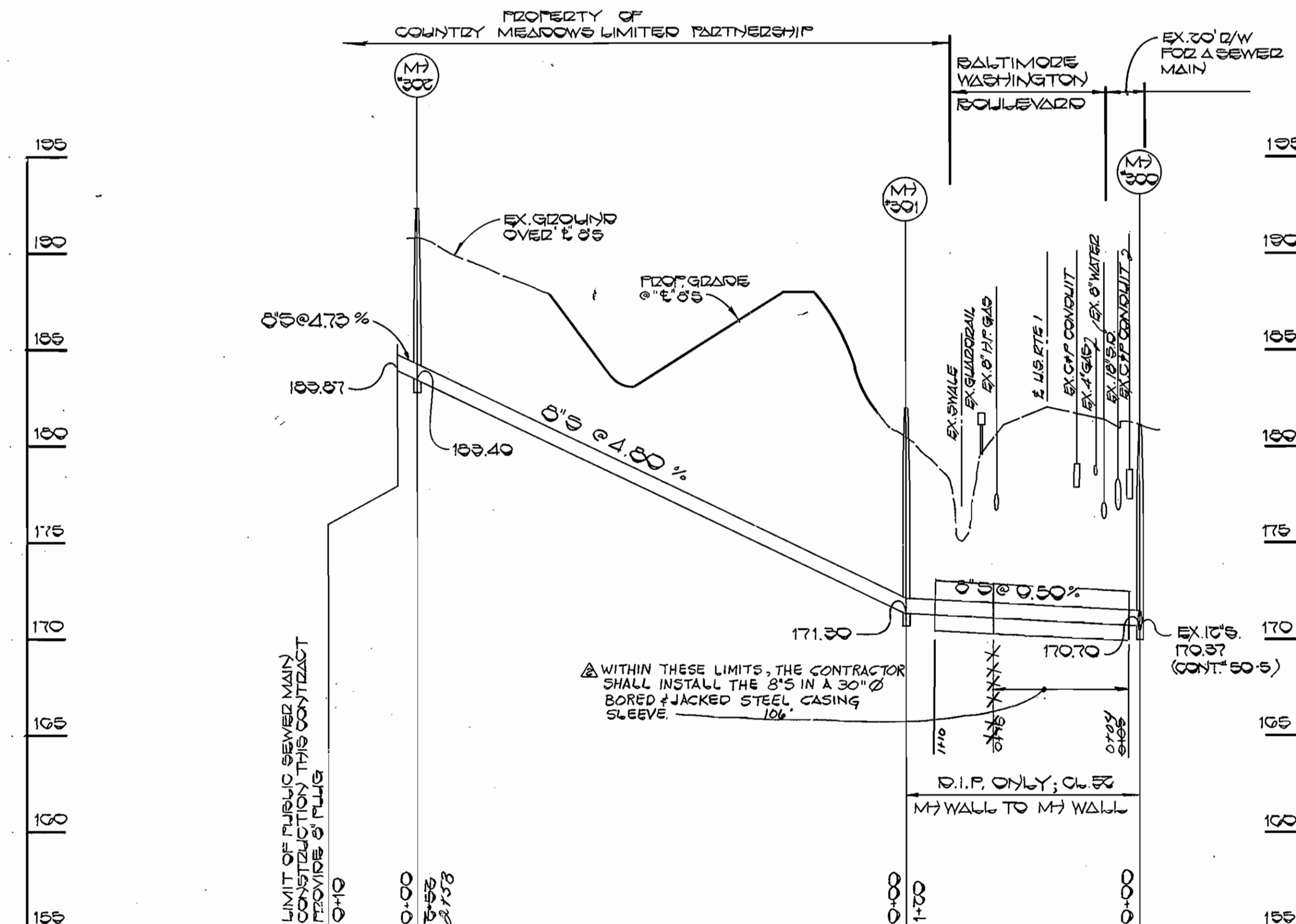
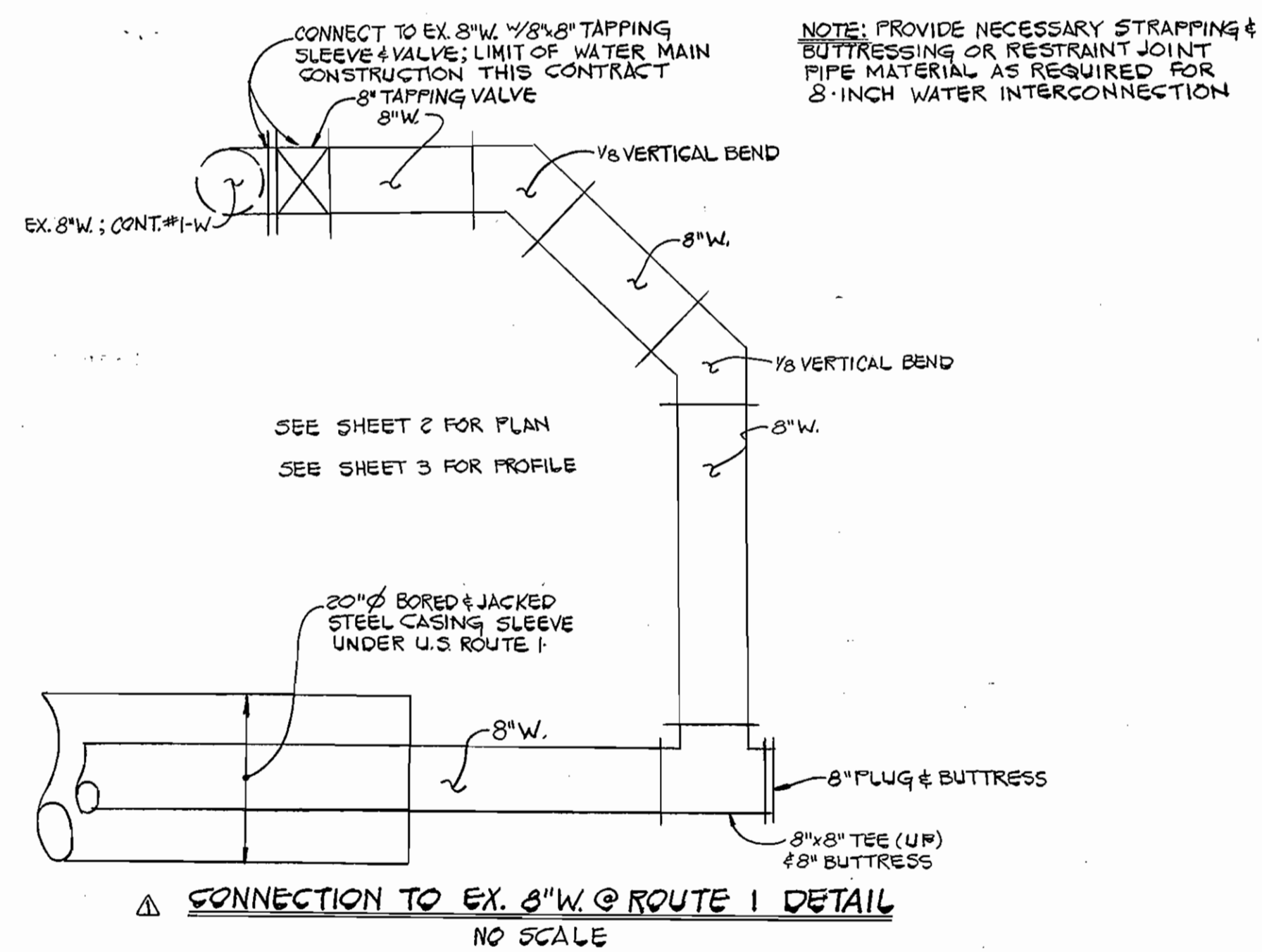
PROFILES
WATER AND SEWER MAINS

600' SCALE MAP NO. 47 BLOCK NO.

COUNTRY MEADOWS
PARCEL 'A'
CONTRACT NO. 24-1704-D
SIXTH ELECTION DISTRICT
HOWARD COUNTY, MARYLAND

SCALE
AS
SHOWN

SHEET
3 OF 4



PROFILES
SCALE: HOR. 1"=50'
VERT. 1"=5'

CONTRACT NO. 24-1704-D
COUNTRY MEADOWS
PARCEL 'A'
SIXTH ELECTION DISTRICT
HOWARD COUNTY, MARYLAND

DEPARTMENT OF PUBLIC WORKS HOWARD COUNTY, MARYLAND Director of Public Works Chief, Bureau of Utilities	FISHER, COLLINS AND CARTER, INC. CONSULTING ENGINEERS AND LAND SURVEYORS 8388 COURT AVENUE ELLICOTT CITY, MARYLAND 21043		DES: P. W. K.		PROFILES WATER AND SEWER MAINS	COUNTRY MEADOWS PARCEL 'A' CONTRACT NO. 24-1704-D SIXTH ELECTION DISTRICT HOWARD COUNTY, MARYLAND	SCALE AS SHOWN SHEET 4 OF 4
			DRN: J. O. CHK: T. A. F. DATE: 8/4/87	C.A.M. Δ ADD STEEL CASING SLEEVE C.A.H. Δ ADD DETAIL			