

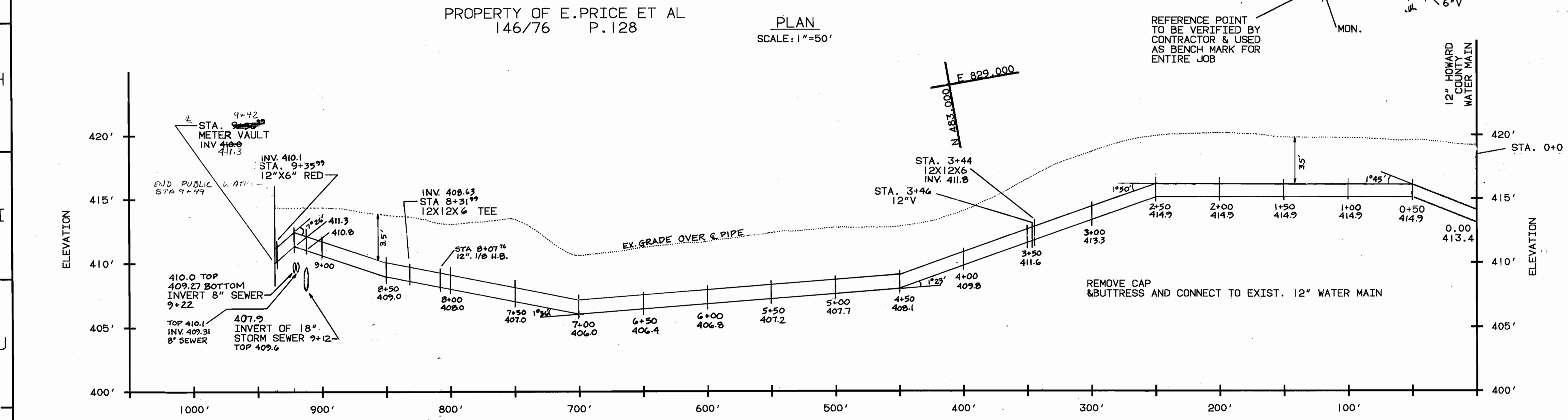
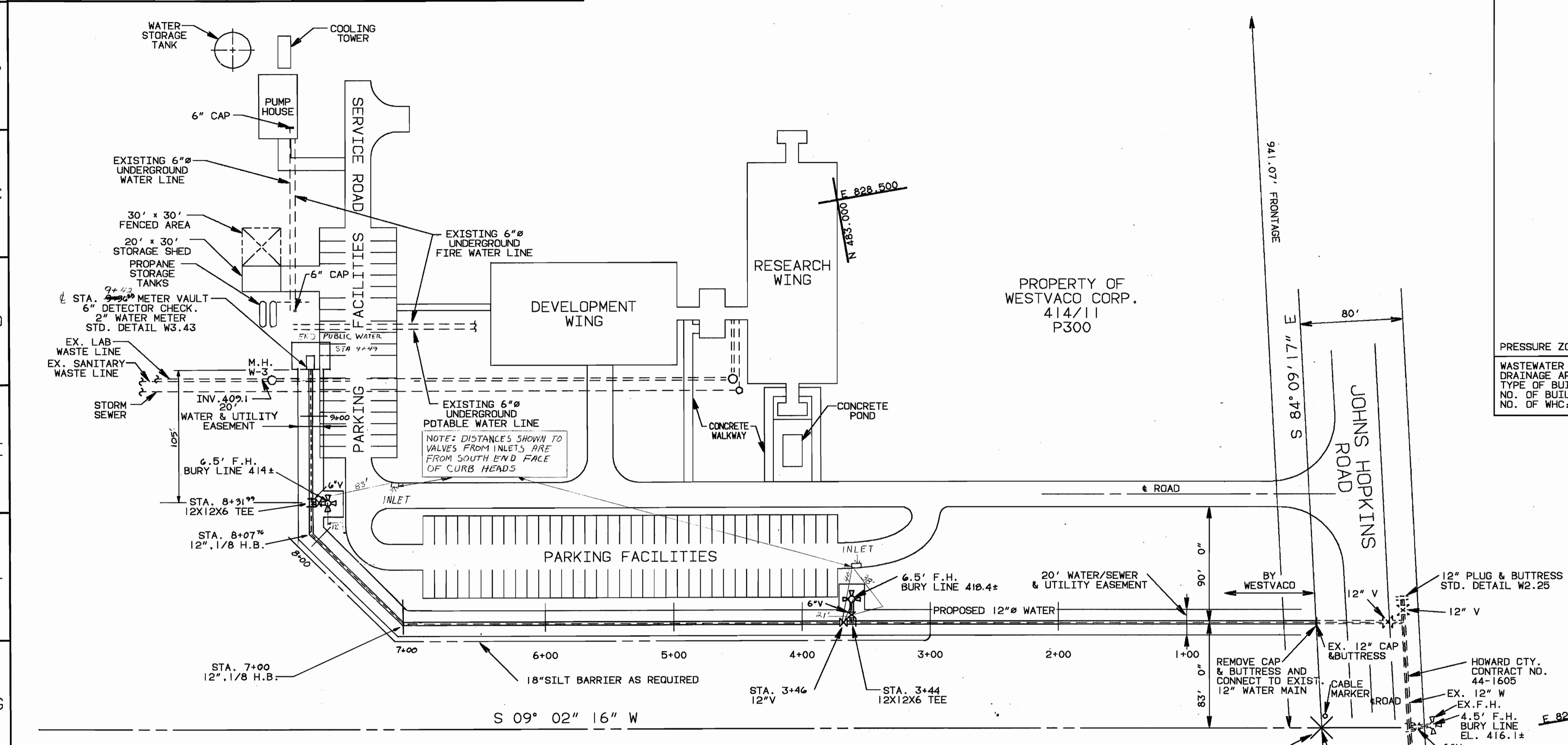
MATERIAL QUANTITIES

ITEM	EST'D	AS-BUILT	SUPPLIER	ITEM	EST'D	AS-BUILT	SUPPLIER
12" WATER	1020 L.F.	927	GRIFFIN PIPE	12X6 RED.	1	1	GRIFFIN PIPE
6" WATER	20 L.F.	67	"	METER VAULT	1	1	"
2" WATER	20 L.F.	13	"	12X12X6 TEE	2	2	GRIFFIN PIPE
6" VALVE	TWO	TWO	M&H VALVE	12" 1/8 H.B.	2	2	"
2" VALVE	ONE	TWO	"	6X6X2 TEE	1	1	"
6" FIRE HYD.	TWO	TWO	M&H VALVE	12" VALVE	1	1	"

BENCH MARKS

HC MONUMENT #2139004 EL. 407.980
CONCRETE MONUMENT S.E. CORNER INT.
JOHNS HOPKINS ROAD AND ROUTE 29

HC MONUMENT #2139006 EL. 407.980
CONCRETE MONUMENT S.W. CORNER INT.
JOHNS HOPKINS ROAD AND OLD COLUMBIA ROAD



PROFILE: SCALE-HORIZONTAL: 1"=50', VERTICAL: 1"=5'

PRESSURE ZONE: 550
WASTEWATER DISPOSAL: N/A
DRAINAGE AREA: HAMMOND BRANCH
TYPE OF BUILDING: RESEARCH LABORATORY
NO. OF BUILDING: TWO
NO. OF WHC: ONE

WATER CODE E-21
SEWER CODE N/A

VICINITY MAP
SCALE: 1"=600'

- CONNECTION SEQUENCE
1. CONSTRUCT 12" CONNECTION FROM JOHN HOPKINS ROAD TO NEW METER VAULT. TEST AND STERILIZE.
 2. CUT AND CAP 6" POTABLE WATER PIPE IN WESTVACO PUMP HOUSE IMMEDIATELY TO THE SATISFACTION OF THE CONTRACTORS EXPENSE.
 3. INSTALL NEW 6" PIPE CONNECTION FROM DETECTOR CHECK TO EXISTING 6" FIRE SYSTEM APPROX. 10' WEST OF NEW METER VAULT.
 4. CONNECT DISCHARGE FROM 2" WATER METER TO EXISTING 6" POTABLE WATER SYSTEM.
 5. REMOVE 12" CAP FROM 12" MAIN INSTALLED ON SOUTH SIDE OF JOHN HOPKINS ROAD, CONTRACT 44-1605.
 6. CONNECT NEW 12" PIPE TO 12" COUNTY MAIN.
 7. CHARGE NEW CONNECTION AND EXAMINE ALL JOINTS NOT TESTED.
 8. PLACE NEW MAIN IN SERVICE AND REMOVE TEMPORARY BLOCKING.

- GENERAL NOTES
1. APPROXIMATE LOCATION OF EXISTING MAINS ARE SHOWN. THE CONTRACTOR SHALL TAKE ALL NECESSARY PRECAUTIONS TO PROTECT EXISTING MAINS AND SERVICE AND MAINTAIN UNINTERRUPTED SUPPLY. ANY DAMAGE INCURRED SHALL BE REPAIRED IMMEDIATELY TO THE SATISFACTION OF THE ENGINEER AT THE CONTRACTORS EXPENSE.
 2. ALL HORIZONTAL CONTROLS ARE BASED ON MARYLAND STATE COORDINATES.
 3. ALL VERTICAL CONTROLS ARE BASED ON U.S.G.S. DATA.
 4. ALL PIPE ELEVATIONS SHOWN ARE INVERT ELEVATIONS UNLESS OTHERWISE DESIGNATED.
 5. CLEAR ALL UTILITIES BY A MINIMUM OF 1' CLEAR ALL POLES BY 2'-0" MINIMUM OR TUNNELS REQUIRED. THE OWNER HAS CONTACTED THE UTILITY COMPANIES AND HAS MADE ARRANGEMENTS FOR BRACING OF POLES AS SHOWN ON THE DRAWINGS. IN THE EVENT THAT THE CONTRACTORS WORK REQUIRES THE BRACING OF ADDITIONAL POLES, ANY COST INCURRED BY THE OWNER FOR THE BRACING OF ADDITION POLES OR DAMAGES SHALL BE DEDUCTED FROM MONEY OWED TO THE CONTRACTOR. THE CONTRACTOR SHALL COORDINATE WITH THE UTILITY COMPANIES TO SCHEDULE THE BRACING OF THE POLES. FOR DETAILS NOT SHOWN ON THE DRAWING, AND FOR MATERIALS AND CONSTRUCTION METHODS, USE HOWARD COUNTY DESIGN MANUAL, VOL. 4, STANDARD SPECIFICATION AND DETAILS FOR CONSTRUCTION. THE CONTRACTOR SHALL HAVE A COPY OF VOL. 4 ON THE JOB.
 6. EXISTING UTILITIES IN THE VICINITY OF THE PROPOSED WORK FOR WHICH TEST PITS HAVE NOT BEEN DUG SHALL BE LOCATED BY THE CONTRACTOR 2 WEEKS IN ADVANCE OF CONSTRUCTION OPERATIONS AT HIS OWN EXPENSE.
 7. THE CONTRACTOR SHALL NOTIFY THE FOLLOWING UTILITIES OR AGENCIES FIVE DAYS PRIOR TO STARTING WORK:
BALTIMORE GAS 850-4650, 859-9904 AND 298-9901
MISS UTILITY 559-0100, COLONIAL PIPELINE 795-1390,
HOWARD CTY. BUREAU OF UTILITIES 992-2366
AND CAP TELEPHONE 1-800-257-7777
 8. TREES AND SHRUBS ARE TO BE PROTECTED FROM DAMAGE TO MAXIMUM EXTENT. TREES AND SHRUBS LOCATED WITHIN THE CONSTRUCTION STRIP ARE NOT TO BE REMOVED OR DAMAGED BY THE CONTRACTOR.
 9. ALL WATER MAINS TO BE D.I.P. UNLESS OTHERWISE NOTED.
 10. VALVES ADJACENT TO TEES SHALL BE TRAPPED TO TEES.
 11. ALL FITTINGS SHALL BE BUTTRESSED OR ANCHORED WITH CONCRETE IN ACCORDANCE WITH THE STANDARD DETAILS UNLESS OTHERWISE PROVIDED ON THE DRAWINGS.
 12. FIRE HYDRANTS SHALL CONFORM TO STANDARD DETAIL N.I.11 AND SHALL BE SET TO THE BURY LINE ELEVATIONS SHOWN ON THE DRAWINGS. ALL FIRE HYDRANTS SHALL BE STRAPPED AND BUTTRESSED OR ANCHORED WITH CONCRETE WITH STANDARD DETAILS.
 13. SOIL AROUND THE FIRE HYDRANT SHALL BE COMPACTED IN ACCORDANCE WITH SECTION 1003 AND 1008 OF THE STANDARD SPECIFICATIONS.
 14. THE CONTRACTOR SHALL OPERATE ANY WATER MAIN VALVES ON THE EXISTING WATER SYSTEM.
 15. ALL WATER HOUSE CONNECTIONS SHALL BE INSIDE METER SETTINGS UNLESS OTHERWISE NOTED.
 16. ALL FIRE HYDRANTS TO BE SET 3 FEET BEHIND PROPOSED FACE OF CURB UNLESS NOTED OTHERWISE.
 17. THE WATER HOUSE CONNECTIONS SHALL BE OUTSIDE METER SETTINGS.
 18. MINIMUM CRIMP RADIUS WILL BE SPECIFIED BY PIPE MANUFACTURER.
 19. WATER MAIN HOUSE CONNECTION LINES MUST BE PLACED SO AS TO HAVE AT LEAST ONE FOOT SEPARATION FROM THE SEWER MAIN HOUSE CONNECTION AS THEY PASS ABOUT IT.

REVIEWED FOR HOWARD SOIL CONSERVATION DISTRICT AND MEETS TECHNICAL REQUIREMENT

James M. H. Allen 11-18-87
SIGNATURE DATE

U.S. SOIL CONSERVATION SERVICE

THIS DEVELOPMENT PLAN IS APPROVED FOR SOIL EROSION AND SEDIMENT CONTROL BY THE HOWARD COUNTY CONSERVATION DISTRICT APPROVED

Howard S.C.D. DATE

DEPARTMENT OF PUBLIC WORKS
HOWARD COUNTY, MARYLAND

DIRECTOR OF PUBLIC WORKS DATE
R. L. B. Smith 11-12-87

CHIEF, BUREAU OF UTILITIES DATE
Paul J. Depalatis

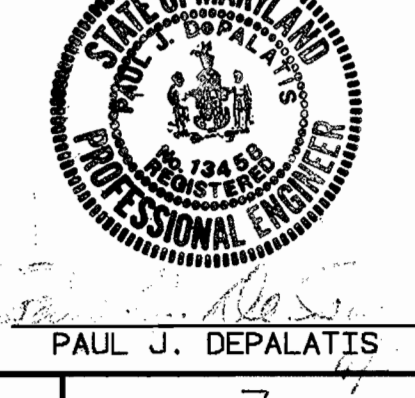
CHIEF, BUREAU OF ENGINEERING DATE
Paul J. Depalatis

CHIEF, LAND DEVELOPMENT DIVISION DATE

THE WESTVACO CORP.
CORPORATE ENGINEERING DEPT.

299 PARK AVE.
NEW YORK, N.Y.

DWG NO. R 0267-1M-1-D



DES.	RFL	F	REVISED TO MEET EX. CONDITIONS	3/1/88
DJ.C.	DJ.C.	E	AS PER HEALTH DEPT. COMMENTS	2/2/88
DRN: R.B.	DJ.C.	D	REVISED FOR COUNTY APPROVAL	10/2/87
CHK: P.J.D.	DJ.C.	C	ISSUED FOR COUNTY APPROVAL	8/20/87
	DJ.C.	B	REPLACE 90° EL WITH TWO 45° ELS - G.C. BIDS	8/11/87
DATE: 7/2/87	BY	NO.	REVISION	DATE

SEDIMENT CONTROL MEASURES FOR THIS CONTRACT WILL BE IMPLEMENTED IN ACCORDANCE WITH SECTION 219 OF THE STANDARD SPECIFICATIONS AND DETAILS FOR CONSTRUCTION.

VICINITY MAP
PLAN & PROFILE
OF WATER CONNECTION

WESTVACO CORP.
JOHN HOPKINS ROAD
12" WATER CONNECTION
ELECTION DISTRICT NO. 5
HOWARD COUNTY
CONTRACT NO. 44-1703-D

SCALE AS SHOWN

SHEET 1 OF 1

600' SCALE MAP NO. 41 BLOCK NO. 16