

**VICINITY MAP**  
SCALE: 1" = 600'  
GENERAL NOTES

- APPROXIMATE LOCATION OF EXISTING MAINS ARE SHOWN. THE CONTRACTOR SHALL TAKE ALL NECESSARY PRECAUTIONS TO PROTECT EXISTING MAINS AND SERVICES AND MAINTAIN UNINTERRUPTED SUPPLY. ANY DAMAGE INCURRED SHALL BE REPAIRED IMMEDIATELY TO THE SATISFACTION OF THE ENGINEER AT THE CONTRACTOR'S EXPENSE.
- ALL HORIZONTAL CONTROLS ARE BASED ON MARYLAND STATE COORDINATES.
- ALL VERTICAL CONTROLS ARE BASED ON U.S.G.C. DATA.
- ALL PIPE ELEVATIONS SHOWN ARE INVERT ELEVATIONS.
- CLEAR ALL UTILITIES BY A MINIMUM OF 6". CLEAR ALL POLES BY 2'-0" MINIMUM OR TUNNEL AS REQUIRED. THE OWNER HAS CONTACTED THE UTILITY COMPANIES AND HAS MADE ARRANGEMENTS FOR BRACING OF POLES AS SHOWN ON THE DRAWINGS. IN THE EVENT THE CONTRACTOR'S WORK REQUIRES THE BRACING OF ADDITIONAL POLES, ANY COST INCURRED BY THE OWNER FOR THE BRACING OF ADDITIONAL POLES OR DAMAGES SHALL BE DEDUCTED FROM MONEY OWED THE CONTRACTOR. THE CONTRACTOR SHALL COORDINATE WITH THE UTILITY COMPANIES TO SCHEDULE THE BRACING OF THE POLES.
- FOR DETAILS NOT SHOWN ON THE DRAWINGS, AND FOR MATERIALS AND CONSTRUCTION METHODS, USE HOWARD COUNTY DESIGN MANUAL, VOLUME IV, STANDARD SPECIFICATIONS AND DETAILS FOR CONSTRUCTION. THE CONTRACTOR SHALL HAVE A COPY OF VOLUME IV ON THE JOB.
- WHERE TEST PITS HAVE BEEN MADE ON EXISTING UTILITIES, THEY ARE NOTED BY THE SYMBOL [Symbol] AT THE LOCATION OF THE TEST PIT. A NOTE OR NOTES CONTAINING THE RESULTS OF THE TEST PIT OR PITS IS INCLUDED ON THE DRAWINGS. EXISTING UTILITIES IN THE VICINITY OF THE PROPOSED WORK FOR WHICH TEST PITS HAVE NOT BEEN DUG SHALL BE LOCATED BY THE CONTRACTOR TWO WEEKS IN ADVANCE OF CONSTRUCTION OPERATIONS AT HIS OWN EXPENSE.
- CONTRACTOR SHALL NOTIFY THE FOLLOWING UTILITIES OR AGENCIES AT LEAST FIVE WORKING DAYS BEFORE STARTING WORK SHOWN ON THESE PLANS:
  - C&P - 1-800-257-7777
  - STATE HIGHWAY ADMINISTRATION - 531-5533
  - BALTIMORE GAS & ELECTRIC CO. CONTRACTOR SERVICES - 850-4620
  - BALTIMORE GAS & ELECTRIC CO. UNDER GROUND DAMAGE CONTROL - 859-9004
  - BALTIMORE GAS & ELECTRIC CO. TROUBLE SHOOTING - 298-9001
  - MISS UTILITY - 1-559-0100
  - COLONIAL PIPELINE CO. - 795-1390
  - BUREAU OF UTILITIES, HOWARD COUNTY DEPARTMENT OF PUBLIC WORKS - 992-2366
- TREES ARE TO BE PROTECTED FROM DAMAGE TO MAXIMUM EXTENT. TREES LOCATED WITHIN THE CONSTRUCTION STRIP ARE NOT TO BE REMOVED OR DAMAGED BY THE CONTRACTOR.
- CONTRACTOR SHALL REMOVE TREES, STUMPS AND ROOTS ALONG LINE OF EXCAVATION AS DIRECTED BY THE ENGINEER. PAYMENT FOR SUCH REMOVAL SHALL BE INCLUDED IN THE UNIT PRICE BID FOR EXCAVATION AND BACKFILL.
- PLACE REGULATION "MEN WORKING" AND WARNING SIGNS AS REQUIRED TO COMPLY WITH MARYLAND STATE HIGHWAY ADMINISTRATION MANUAL OF TRAFFIC CONTROL FOR HIGHWAY CONSTRUCTION AND MAINTENANCE OPERATIONS.
- ALL WATER MAINS TO BE D.I.P. UNLESS OTHERWISE NOTED.
- TOP OF ALL WATER MAINS TO HAVE A MINIMUM OF 3" COVER UNLESS OTHERWISE NOTED.
- VALVES ADJACENT TO TEES SHALL BE STRAPPED TO TEES.
- BLOCK ALL FITTINGS WITH CONCRETE.
- BURY LINE ELEVATIONS ON FIRE HYDRANTS SHALL BE SET TO THE ELEVATIONS SHOWN ON THE DRAWINGS. ALL FIRE HYDRANTS SHALL BE STRAPPED AND BUTTRESSED WITH CONCRETE IN ACCORDANCE WITH STANDARD DETAILS. SOIL AROUND THE FIRE HYDRANT TO BE COMPACTED IN ACCORDANCE WITH SECTIONS 1003 AND 1002 OF THE GENERAL REQUIREMENTS FOR WATER AND SEWER.
- ALL WATER HOUSE CONNECTIONS SHALL BE FOR AN INSIDE METER SETTING.
- THE CONTRACTOR SHALL NOT OPERATE ANY WATER MAIN VALVES ON THE EXISTING SYSTEM.
- FOR ALL COPPER WATER HOUSE CONNECTIONS UTILIZE FLARED TYPE FITTINGS ONLY.
- THE SERVICE CLAMPS ARE TO HAVE STAINLESS STEEL STRAPS.
- ALL SEWER MAINS SHALL BE C.S.P.X., V.C.P.X., P.V.C. OR A.C.P. CLASS 2400 UNLESS OTHERWISE NOTED.
- THE CONTRACTOR SHALL PROVIDE A JOINT IN ALL SEWER MAINS WITHIN 2'-0" OF EXTERIOR MANHOLE WALL.
- ALL MANHOLES SHALL BE 4'-0" INSIDE DIAMETER UNLESS OTHERWISE NOTED.
- MANHOLES SHOWN WITH 12" AND 16" WALLS ARE BRICK MANHOLES ONLY.
- MANHOLES DESIGNATED W.T. IN PLAN AND PROFILE SHALL HAVE WATERTIGHT FRAME AND COVERS, STANDARD DETAIL 65.52 VOLUME 1: WHERE WATERTIGHT MANHOLE FRAME AND COVER IS USED, SET TOP OF FRAME 1'-6" ABOVE FINISHED GRADE.
- HOUSE(S) WITH THE SYMBOL "C.N.S." INDICATES THE CELLAR CANNOT BE SERVED.
- ALL WATER HOUSE CONNECTIONS SHALL HAVE A MINIMUM VERTICAL CLEARANCE OF 12" ABOVE ALL SANITARY SEWER CROSSINGS.
- ALL SANITARY SEWER HOUSE CONNECTIONS SHALL HAVE A MINIMUM VERTICAL CLEARANCE OF 12" BELOW ALL WATER MAIN CROSSINGS.
- PROFILE STATIONS SHALL BE ADJUSTED AS NECESSARY TO CONFORM TO PLAN DIMENSIONS.
- NO PIPE SHALL BE LAID UNTIL LINES OF EXCAVATION HAVE BEEN BROUGHT TO SUBGRADE.

HOWARD SOIL CONSERVATION DISTRICT:  
REVIEWED FOR HOWARD SOIL CONSERVATION DISTRICT  
AND MEETS TECHNICAL REQUIREMENTS.

*James M. Achen* 9-29-87  
U.S. SOIL CONSERVATION SERVICE DATE

THIS PLAN IS APPROVED FOR SOIL EROSION AND SEDIMENT CONTROL BY THE HOWARD SOIL CONSERVATION DISTRICT.

*Stephen L. Fulin* 9/29/87  
HOWARD SOIL CONSERVATION DISTRICT DATE

QUANTITIES			
ITEM	QUANTITY	AS-BUILT	SUPPLIER
8" SEWER	1045 LF	1166.50	Drummond
6" SHC	676 LF	8774	"
16" MANHOLE	22	"	"
6" WATER	1210 LF	1219.02	ATLANTIC CONCRETE PRODUCTS, INC.
6" WATER	480 LF	505	"
1" W.H.C.	300 LF	400	VINCENT BRASS & HAUSER
3/4" W.H.C.	340 LF	525	"
8" VALVES	2	"	"
6" VALVES (EXC. FIRE)	1	"	REINOLD & BUCKLE COMPANY
8" D.I.P.	480 LF	566.61	"
FIRE HYDRANTS	4	"	ATLANTIC STATES CAST IRON PIPE CO. MANUFACTURING COMPANY

DEPARTMENT OF PUBLIC WORKS  
HOWARD COUNTY, MARYLAND

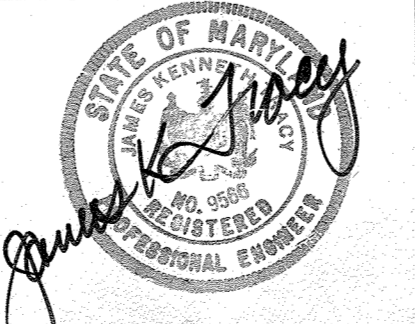
*Robert J. Burns* 10-2-87  
DIRECTOR OF PUBLIC WORKS DATE

*William S. Kelly* 10-1-87  
CHIEF, BUREAU OF ENGINEERING DATE

*Michael A. Rosinelli* 10-1-87  
CHIEF, BUREAU OF UTILITIES DATE

*John J. ...* 10/1/87  
CHIEF, LAND DEVELOPMENT DIVISION DATE

TRACY, SCHULTE & ASSOCIATES INC.  
planning architecture engineering  
8460 Baltimore National Pike Suite 413  
Ellicott City, Maryland 21043



DESIGNER	DATE	REVISION	DATE
JLR	10-19-87	Changed front footing on Lots 255, 259, 260 and 265.	10-19-87
JLR	10-19-87	Shaded the plan view scale.	10-19-87
DRN:JCA	2-9-88	Corrections to sewer between manholes 207 & 210	2-9-88
CHK:RJW	7-2-91	REVISE LOCATION SHC LOT 250 AND 260	7-2-91
DATE: 5-1-87	BY: NO.	REVISION	DATE

PLAN OF  
WATER AND SEWER MAINS

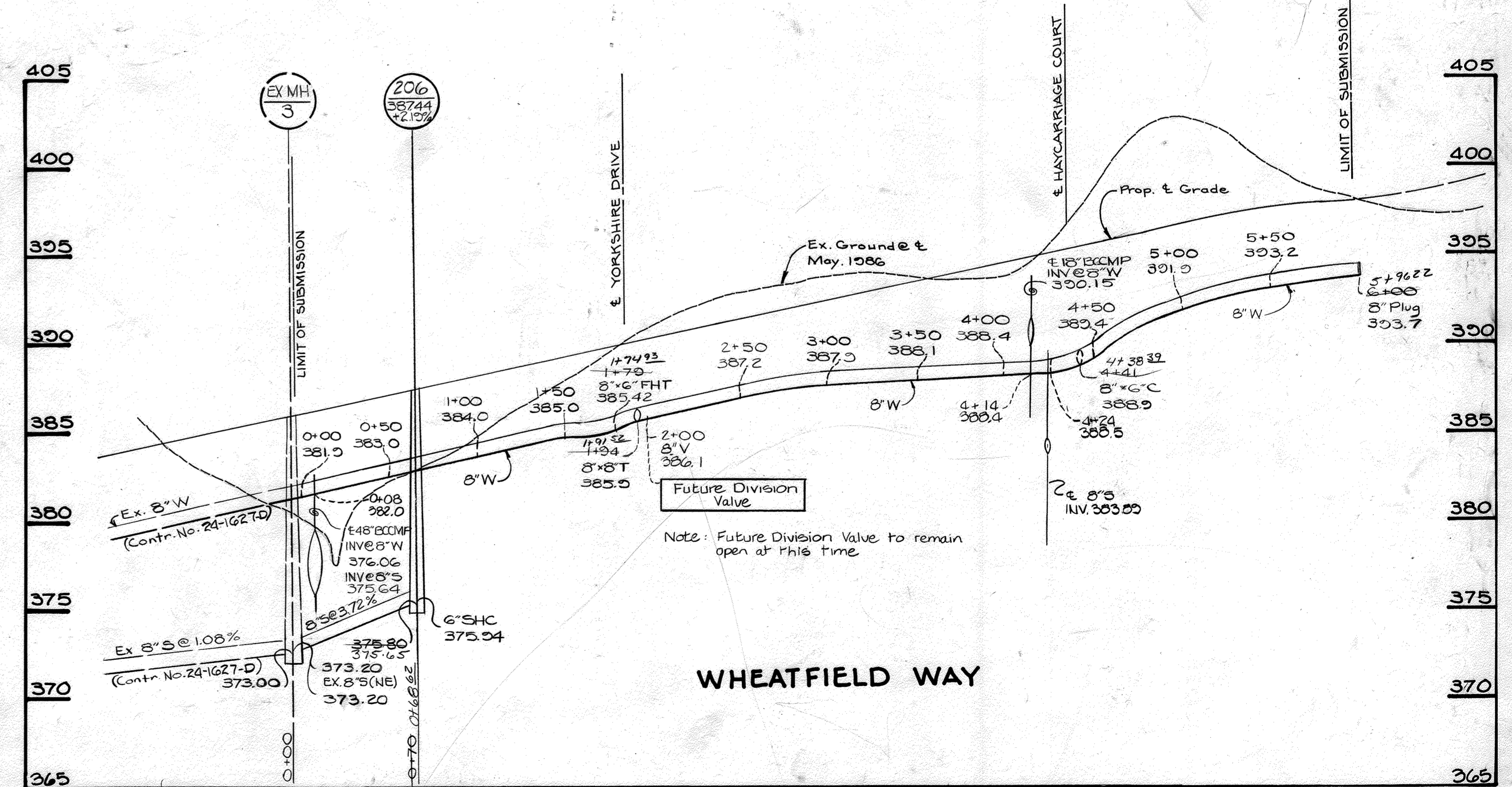
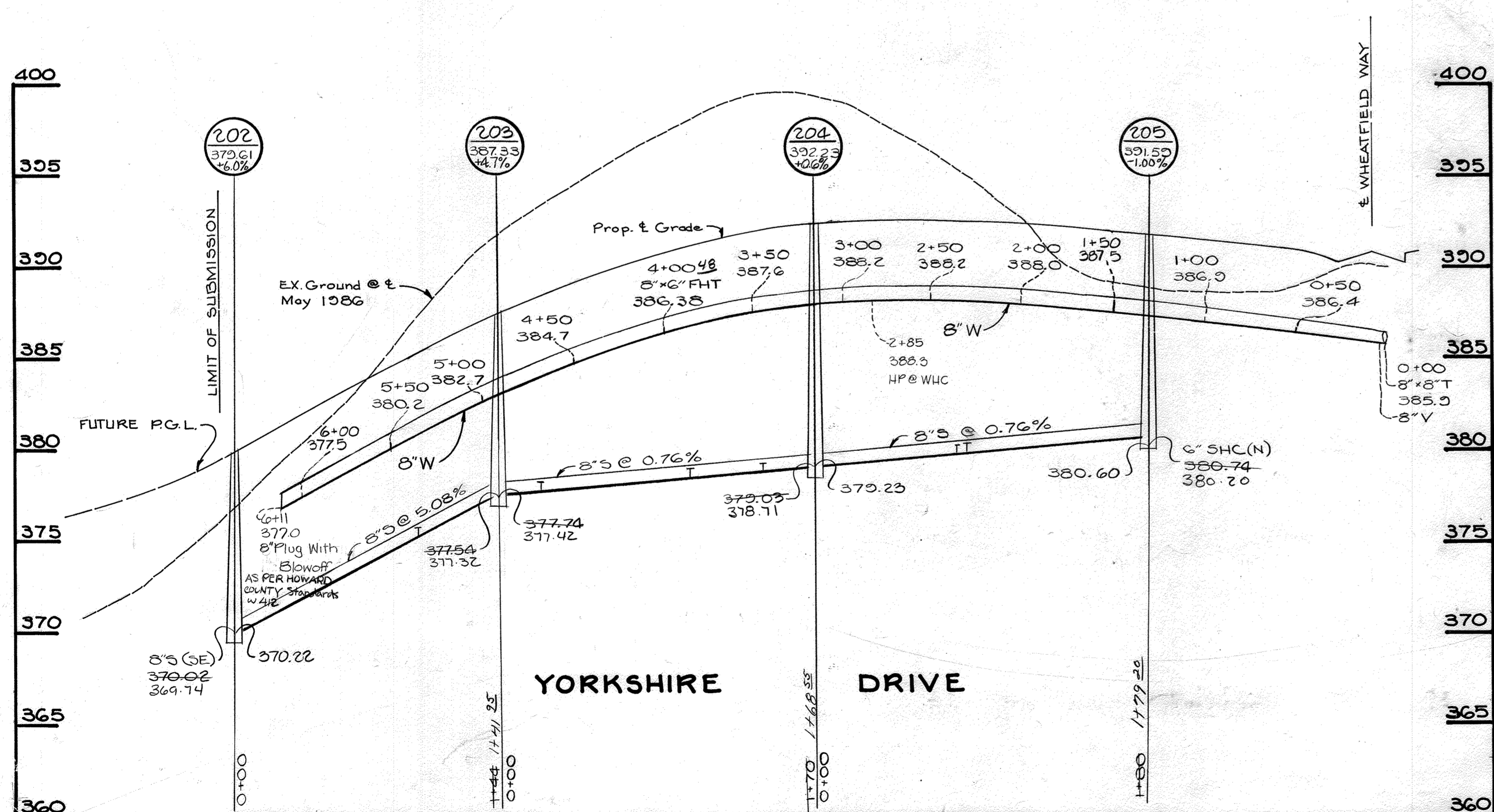
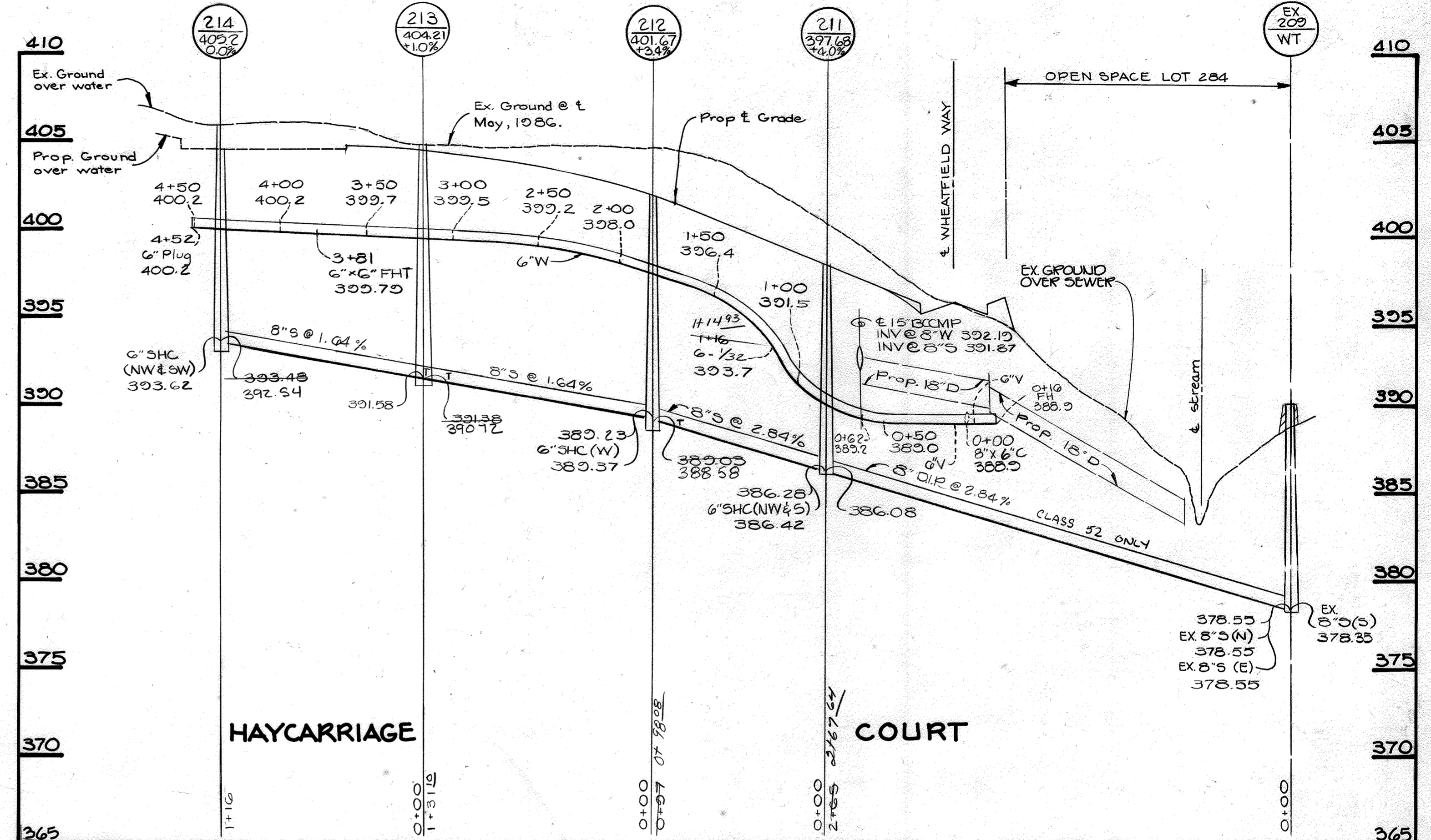
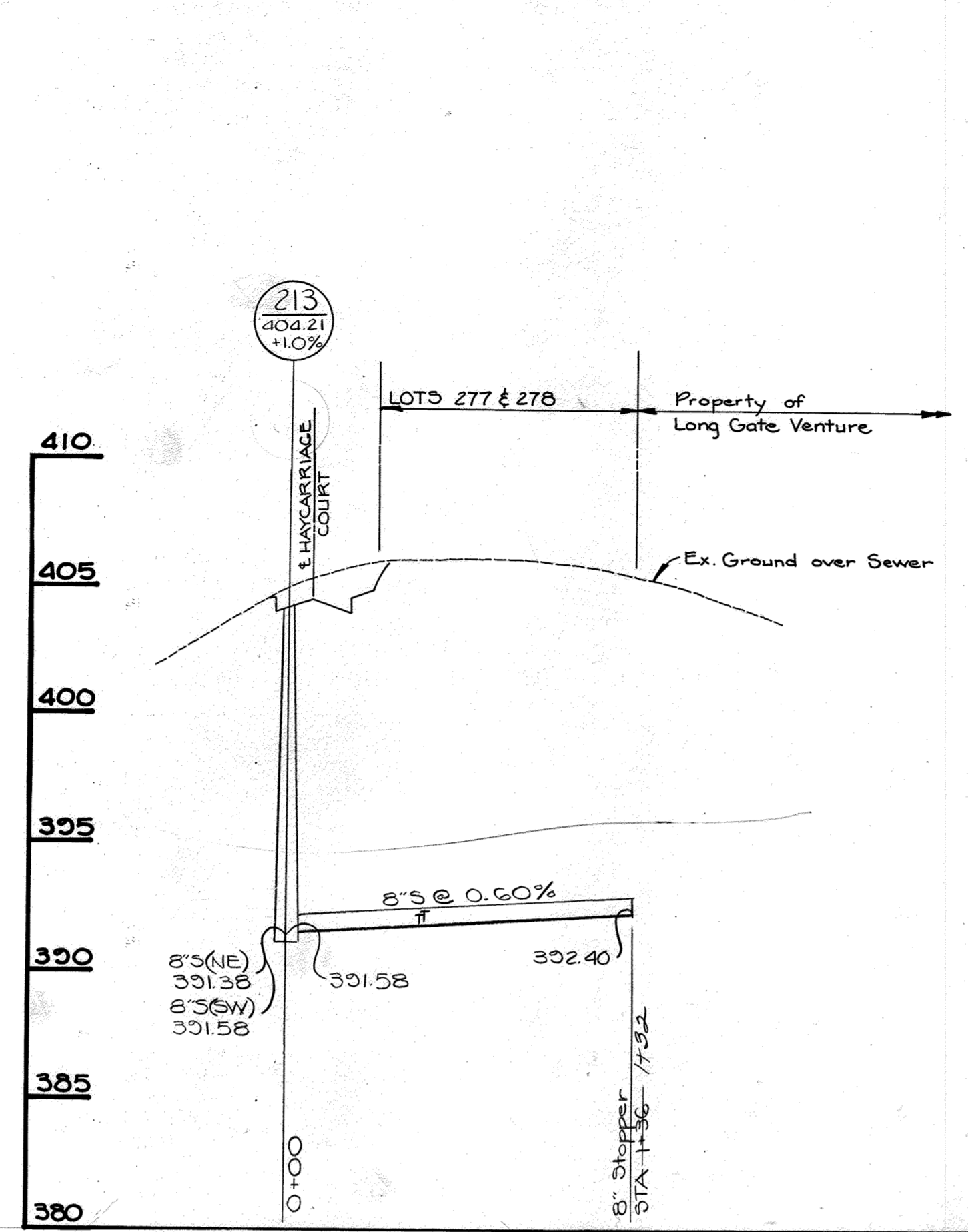
LONG GATE SECTION 2, AREA 2  
ELECTION DISTRICT NO. 2  
CONTRACT NO. 24-1695-D

SCALE AS SHOWN  
SHEET 1 OF 3

600' SCALE MAP NO. 30 BLOCK NO. 6

AS-BUILT 8-16-88





PROFILES: SCALE: HORIZ: 1"=50' VERT: 1"=5'

DEPARTMENT OF PUBLIC WORKS  
HOWARD COUNTY, MARYLAND

*R. H. Beatty*  
DIRECTOR OF PUBLIC WORKS  
DATE: 10-2-87

*William E. Ray*  
CHIEF, BUREAU OF ENGINEERING  
DATE: 10-1-87

*John A. ...*  
CHIEF, LAND DEVELOPMENT DIVISION  
DATE: 10-1-87

TRACY, SCHULTE  
& ASSOCIATES INC.

planning architecture engineering  
8480 Baltimore National Pike Suite 418  
Ellicott City, Maryland 21043

DES: KAM	JLR	Shaded slope of sewer between MH 213 and 214.	11-19-87
JLR	JLR	Shaded G' valves and fire hydrants at the station.	11-19-87
DRN: SAB	CDT	Added information to manholes 209 and 3.	2-9-88
CHK: JKT			
DATE: 5-1-87	BY: NO.	REVISION	DATE

PROFILES OF  
WATER AND SEWER MAINS

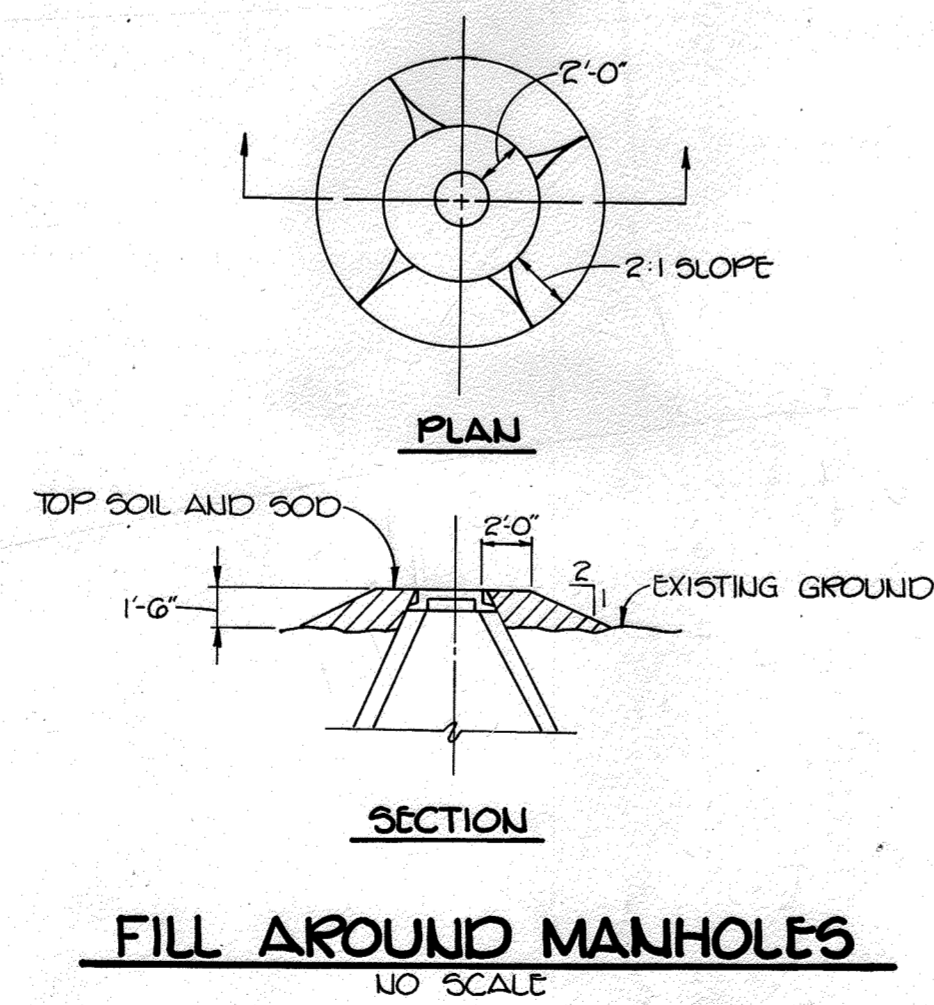
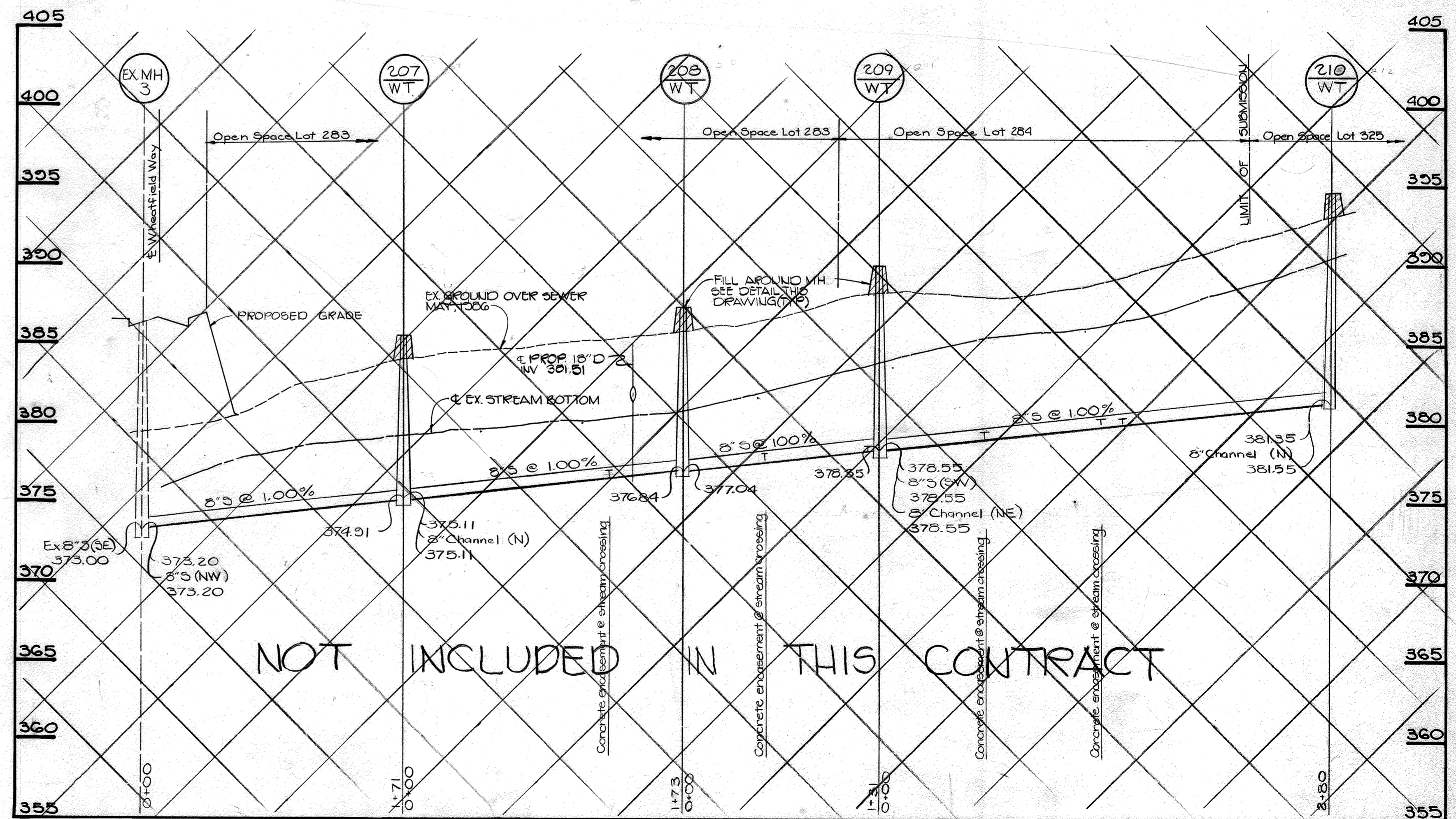
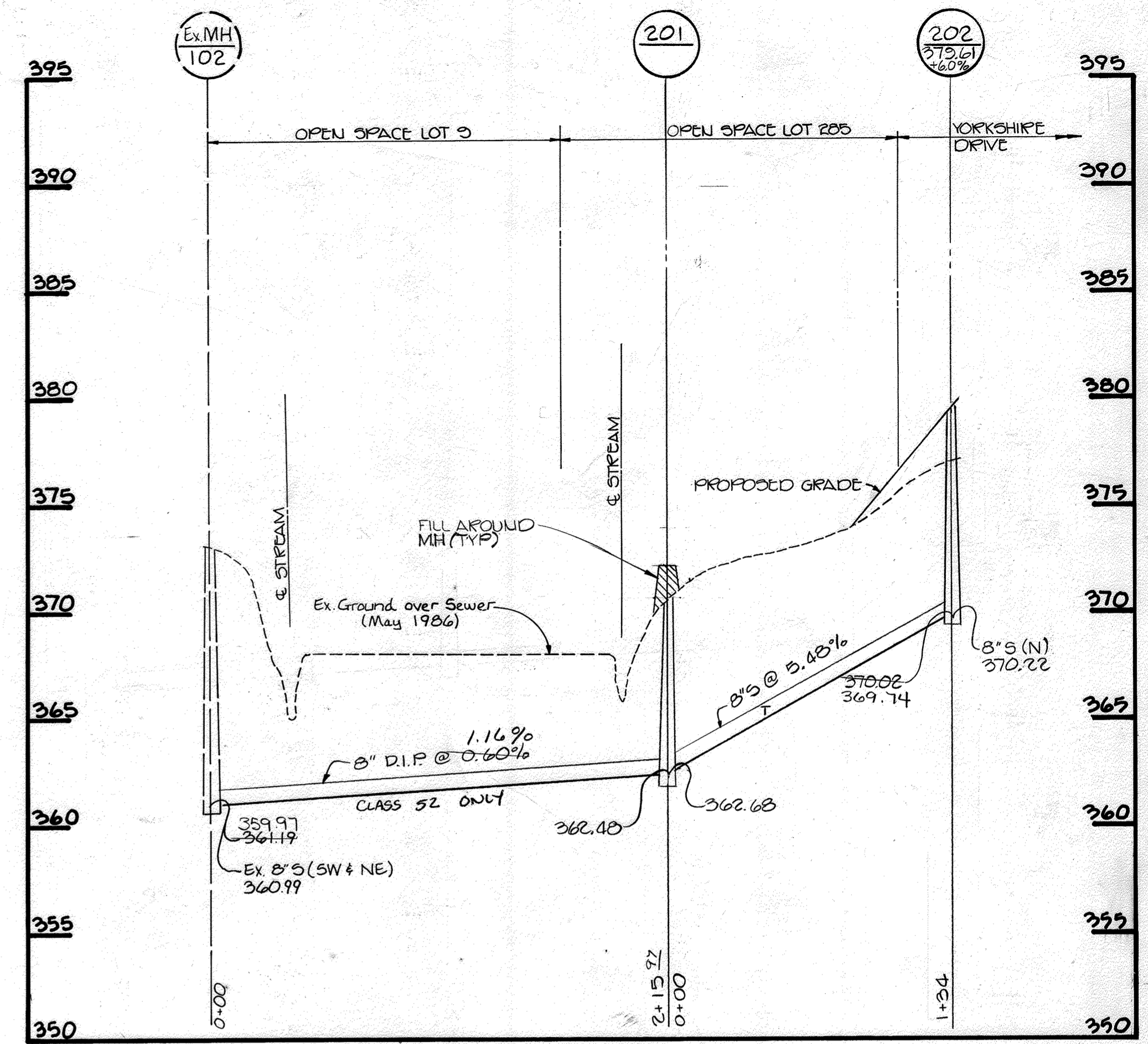
600' SCALE MAP NO. 30 BLOCK NO. 6

LONG GATE  
SECTION 2, AREA 2  
ELECTION DISTRICT NO. 2  
CONTRACT NO. 24-1695-D

SCALE AS SHOWN  
SHEET 2 OF 3

AS-BUILT 8-16-88





NOT INCLUDED IN THIS CONTRACT

PROFILES  
SCALE: HORIZ. 1"=50'  
SCALE: VERT. 1"=5'

DEPARTMENT OF PUBLIC WORKS  
HOWARD COUNTY, MARYLAND

*R. M. Beiser* 10-2-87  
DIRECTOR OF PUBLIC WORKS DATE

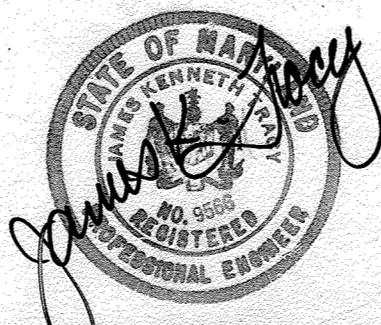
*D. S. ...* 10-1-87  
CHIEF, BUREAU OF ENGINEERING DATE

*M. D. ...* 10-1-87  
CHIEF, BUREAU OF UTILITIES DATE

*C. ...* 10/10  
CHIEF, LAND DEVELOPMENT DIVISION DATE

TRACY, SCHULTE  
& ASSOCIATES, INC.

planning architecture engineering  
8480 Baltimore National Pike Suite 418  
Ellicott City, Maryland 21043



DES: JLR	CDT	Remove Profile	2988
DRN: SAB			
CHK: RJW			
DATE: 5-1-87	BY NO.	REVISION	DATE

PROFILES OF  
SEWER MAINS

600' SCALE MAP NO. 30 BLOCK NO. 6

LONG GATE  
SECTION 2, AREA 2  
ELECTION DISTRICT NO. 2  
CONTRACT NO. 24-1695-D

SCALE AS SHOWN  
SHEET 3 OF 3