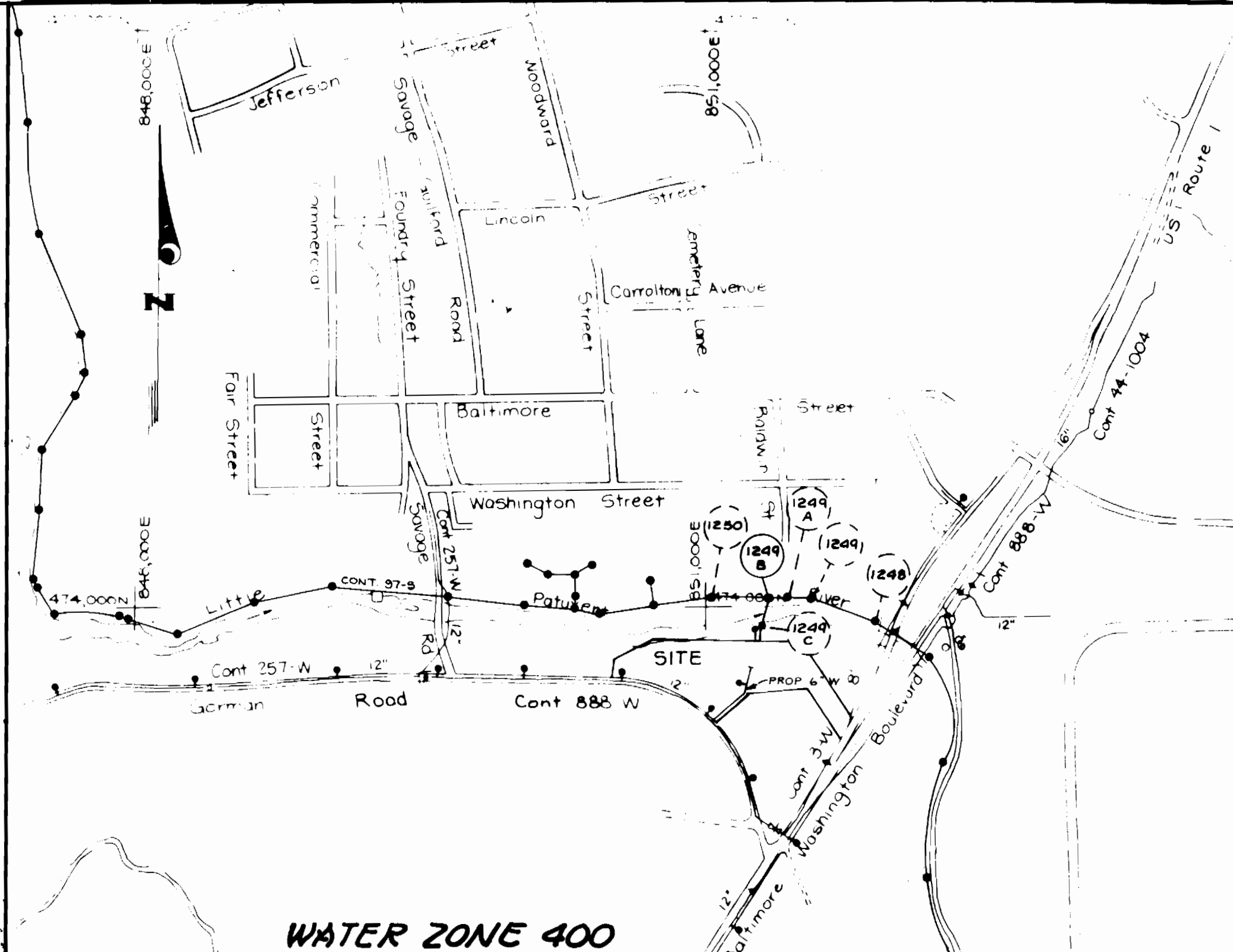
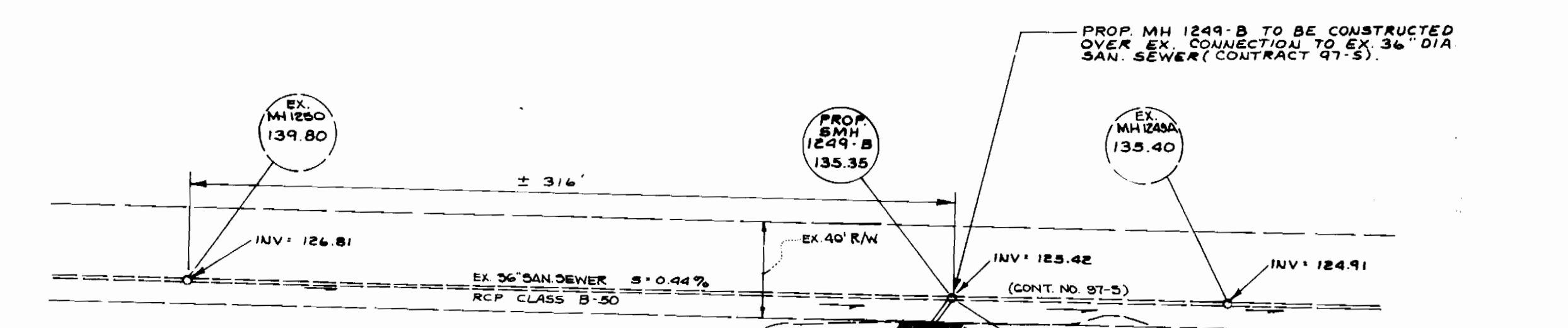
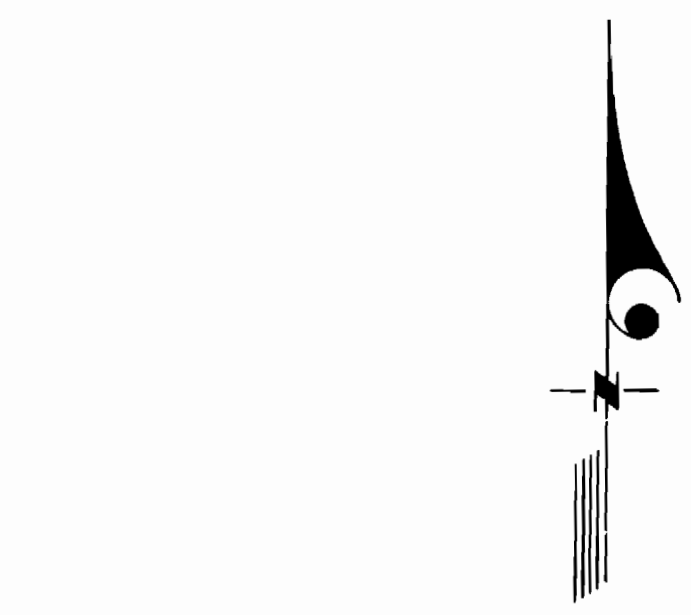


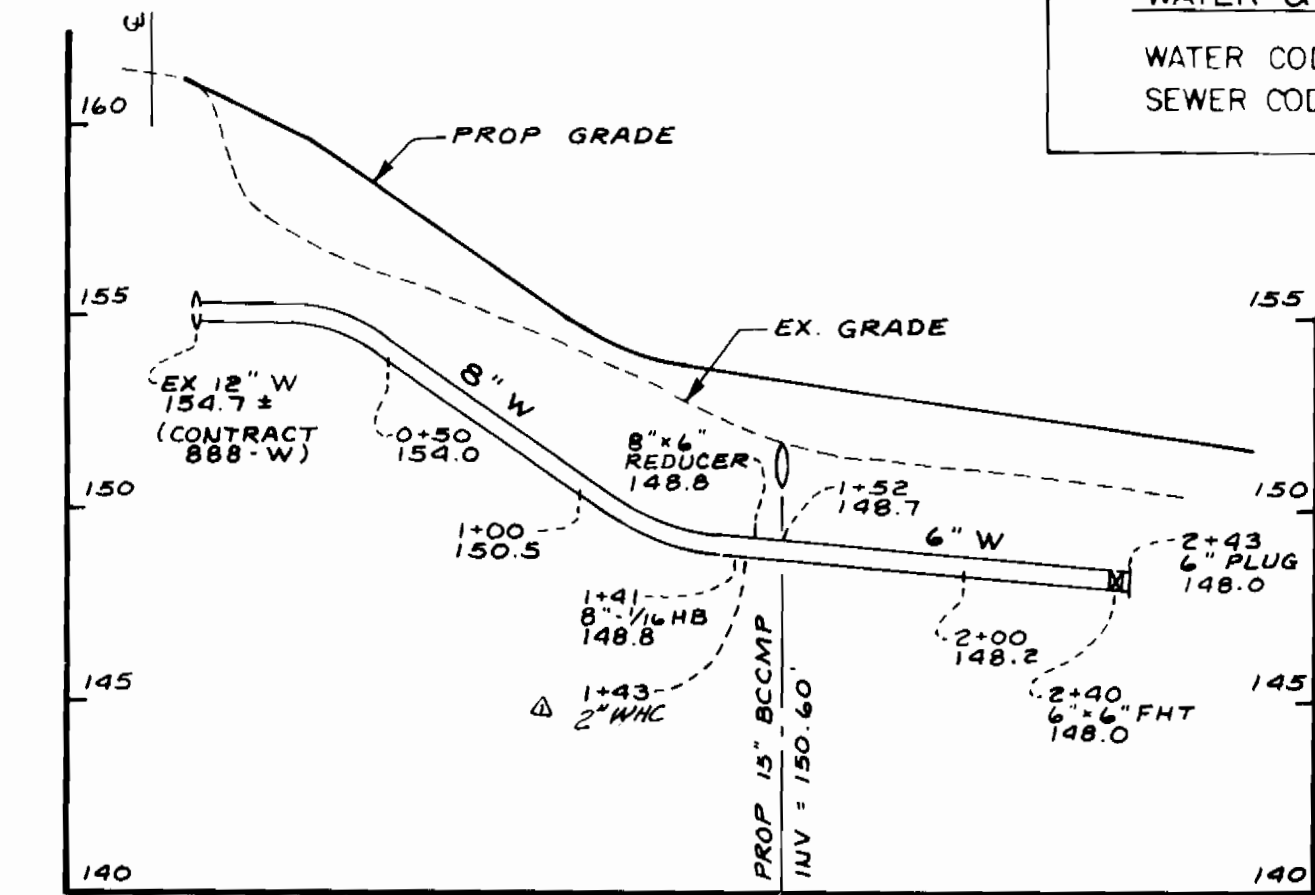
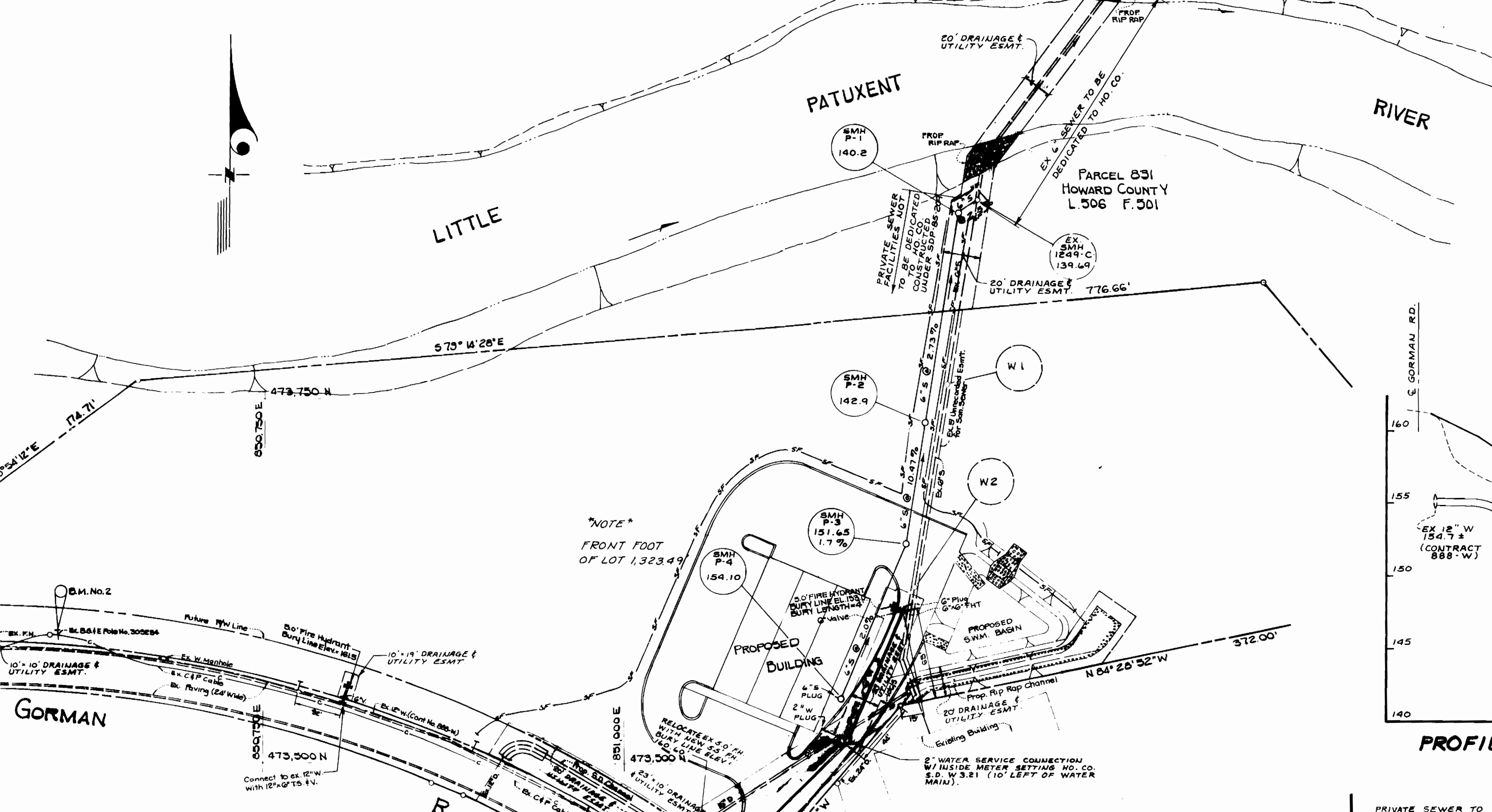
QUANTITIES		
ITEM	ESTIMATED	AS BUILT
6" Water	100	
8" Water	43	
Fire Hydrants	2	
3" Valve (Exc.FHV)		
4" S B V	1	
REDUCER	1	
TEE	1	
BENDS	1	
2" WATER	20	



WATER & SEWER CODE
 WATER CODE 004
 SEWER CODE 3060000

Scale: 1" = 600'

NUMBER OF LOTS 1
 TYPE OF BUILDING INDUSTRIAL
 NO OF W H C 1
 NO OF S H C 1
 DRAINAGE AREA SAVAGE WWTP



PROFILE of PROP. 6" & 8" WATER
 SCALE: 1" = 5' VERT.
 1" = 30' HORIZ.

BENCH MARKS
 BENCH MARK No. 1 ELEV. = 160.56
 PK NAIL ON SOUTHWIDE OF B.G. & E. POLE NO. 111705
 BENCH MARK No. 2 ELEV. = 161.77
 PK NAIL ON SOUTHWIDE OF B.G. & E. POLE NO. 305254

PARCEL 142
 FREESTATE RACING ASSN.
 L. 1023 F. 347
 L. 1100 F. 676
 ZONE M-1

PARCEL 613
 WESTINGHOUSE ELECTRIC COMPANY
 L. 978 F. 666
 M-1 ZONING

SEDIMENT CONTROL MEASURES FOR THIS CONTRACT WILL BE IMPLEMENTED IN ACCORDANCE WITH SECTION 319 OF THE HOWARD COUNTY STANDARDS & SPECIFICATIONS AND AS PER SITE DEVELOPMENT PLANS, SDP-85-209.

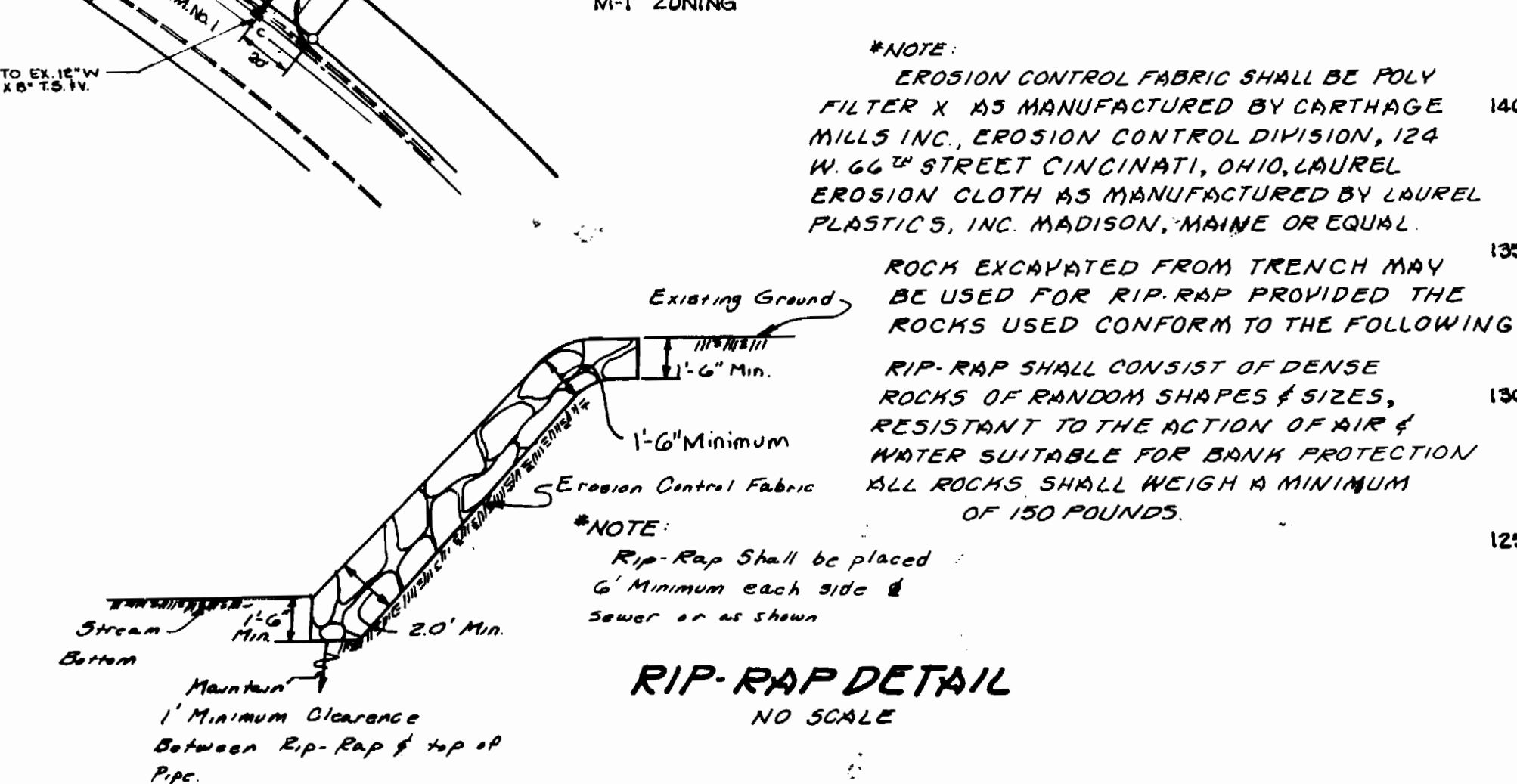
REVIEWED FOR HOWARD SOIL CONSERVATION DISTRICT AND MEETS TECHNICAL REQUIREMENT.

U.S. SOIL CONSERVATION SERVICE

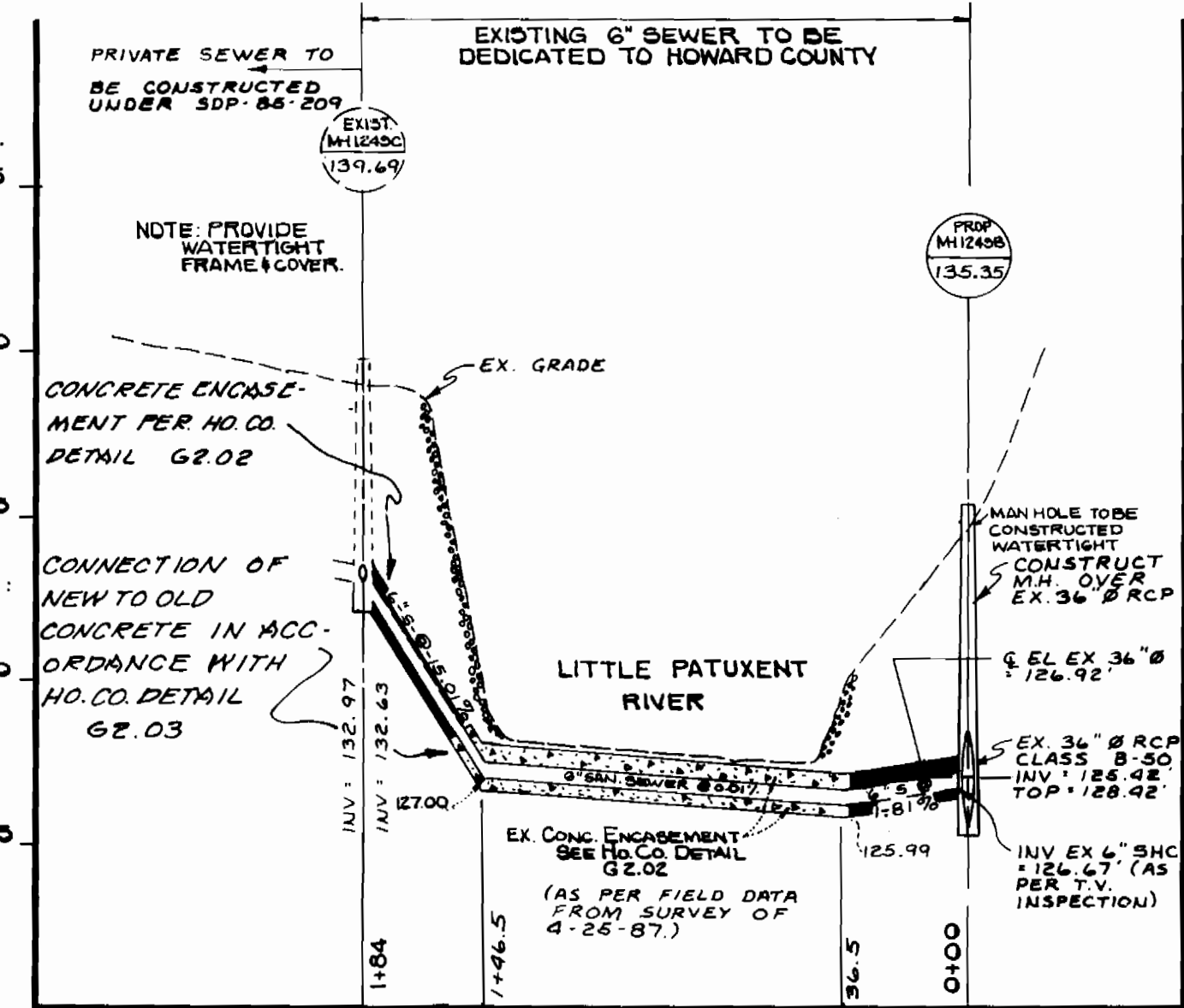
This Development Plan is approved for Soil Erosion and Sediment Control by the Howard Soil Conservation District

APPROVED: [Signature]

PLAN SCALE 1" = 50'



RIP-RAP DETAIL
 NO SCALE



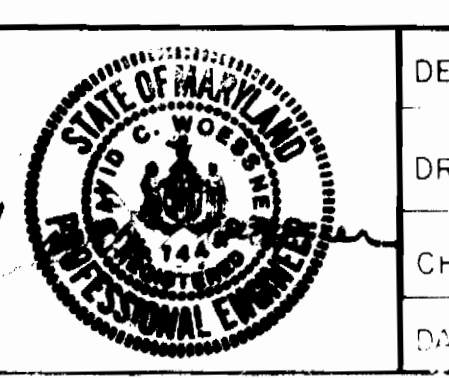
PROFILE OF EXISTING 6" SEWER
 SCALE: 1" = 5' VERT.
 1" = 30' HORIZ.

GENERAL NOTES

- Approximate location of existing mains are shown. The contractor shall take all necessary precautions to protect existing mains and services and maintain uninterrupted supply. Any damage incurred shall be repaired immediately to the satisfaction of the Engineer at the Contractor's expense.
- All horizontal controls are based on Maryland State Coordinates
- All vertical controls are based on U.S.G.S data
- All pipe elevations shown are invert elevations
- Clear all utilities by a minimum of 6". Clear all poles by 2'-0" minimum, or tunnel as required. The owner has contacted the utilities companies and has made arrangements for bracing of poles as shown on the drawings. In the event the contractor's work requires the bracing of additional poles, any cost incurred by the owner for the bracing of additional poles or damages shall be deducted from money owed the contractor. The contractor shall coordinate with the utility companies to schedule the bracing of the poles.
- For details not shown on the drawings, and for materials and construction methods use Howard County Design Manual, Volume IV, Standard Specifications and Details for Construction. The contractor shall have a copy of Volume IV on the job.
- Where test pits have been made on existing utilities they are noted by the symbol at the location of the test pit. A note or notes containing the results of the test pit or pits is included on the drawings. Existing utilities in the vicinity of the proposed work for which test pits have not been dug shall be located by the contractor two weeks in advance of construction operations at his own expense.
- Contractor shall notify the following utilities or agencies at least five working days before starting work shown on these plans:
 State Highway Administration - 531-5533
 Baltimore Gas & Electric Co.-Contractor Services - 561-2585
 Baltimore Gas & Electric Co.-Underground Damage Control - 234-5621
 Baltimore Gas & Electric Co.-Trouble Shooting - 298-9013
 Miss Utility - 1-800-257-7777
 Colonial Pipeline Co - 795-1390
 Bureau of Utilities, Howard County Dept of Public Works - 992-2366
- Trees and shrubs are to be protected from damage to maximum extent. Trees and shrubs located within the construction strip are not to be removed or damaged by the contractor.
- Contractor shall remove trees, stumps, and roots along line of excavation. Payment for such removal shall be included in the unit price bid for construction of the main.
- All water mains to be D.I.P. unless otherwise noted.
- Tops of all water mains to have a minimum of 3 1/2' cover unless otherwise noted.
- Valves adjacent to tees shall be strapped to tees
- All fittings shall be buttressed or anchored with concrete in accordance with the Standard Details unless otherwise provided for on the drawings.
- Fire hydrants shall be set to the bury line elevations shown on the drawings. All fire hydrants shall be strapped and buttressed with concrete in accordance with Standard Details. Soil around the fire hydrant shall be compacted in accordance with Section 1003 of the Standard Specifications.
- The contractor shall not operate any water main valves on the existing water
- Water house connection shall be for inside meter setting
- All copper water house connections shall utilize flared type fittings only.

DEPARTMENT OF PUBLIC WORKS
 HOWARD COUNTY, MARYLAND
 [Signature] 6-29-87
 DIRECTOR OF PUBLIC WORKS

KIDDE CONSULTANTS INC.
 ENGINEERS • PLANNERS • SURVEYORS
 100 WEST STREET/ SUITE 100/ LAUREL MD 20707



DES. B.M.
 DRN. DMW
 CHK. MSS
 DATE 8/7/87

CHANGED 1 1/2" TEE TO 2" ANGLE
 REVISIONS

6" & 8" WATER MAIN EXTENSION
 6" SANITARY SEWER DEDICATION
 CONTRACT NO. 24-1669-D
 600' SCALE MAP NO. 47 BLOCK NO. 18

SHARBAUGH PROPERTY
 PARCEL 489 TAX MAP NO 47
 6TH ELECTION DISTRICT
 HOWARD COUNTY, MARYLAND
 SCALE AS SHOWN
 SHEET 1 OF 1