


**GENERAL NOTES**

PART I:

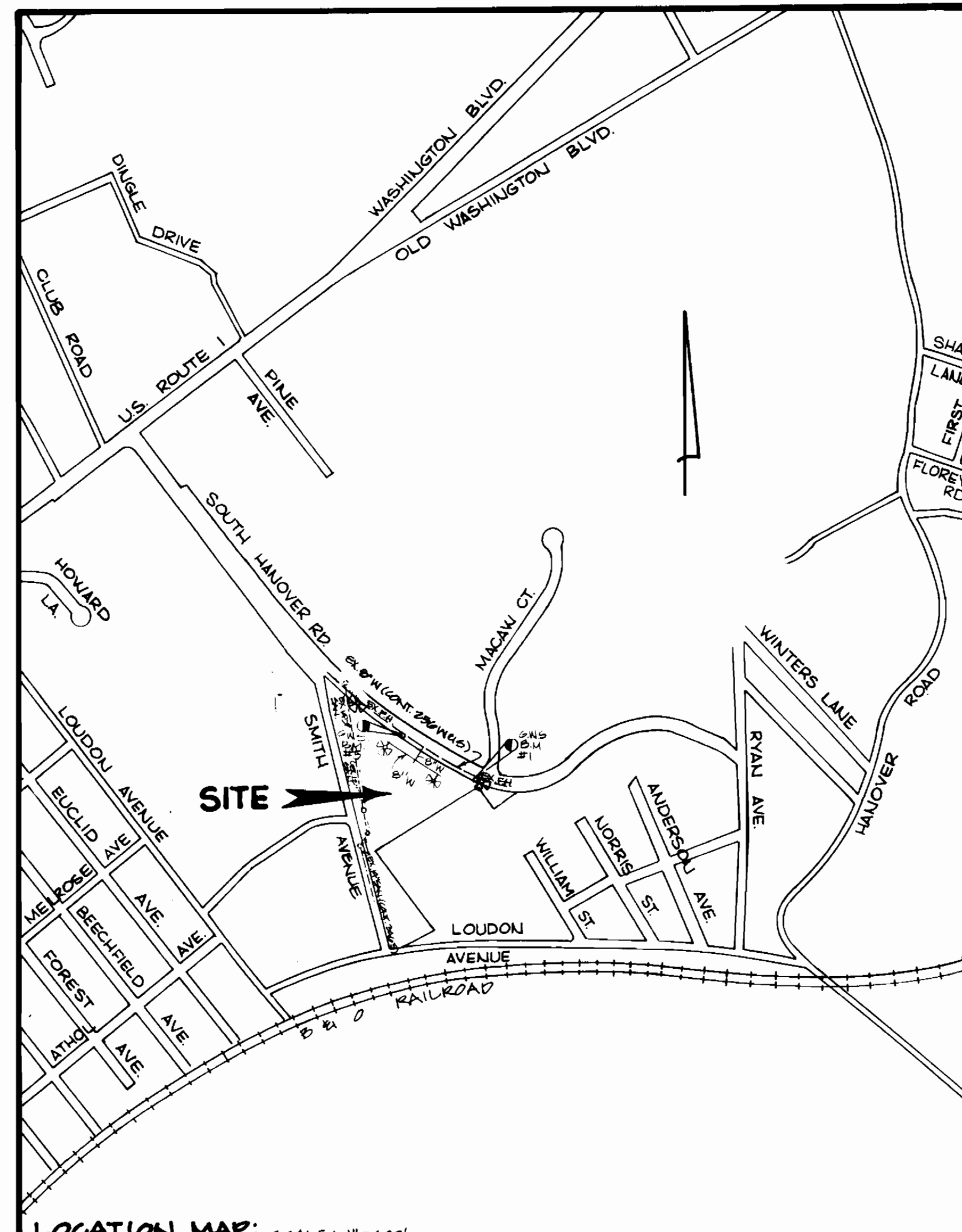
- 1) APPROXIMATE LOCATION OF EXISTING MAINS ARE SHOWN. THE CONTRACTOR SHALL TAKE ALL NECESSARY PRECAUTIONS TO PROTECT EXISTING MAINS AND SERVICE AND MAINTAIN UNINTERRUPTED SUPPLY. ANY DAMAGE INCURRED SHALL BE REPAIRED IMMEDIATELY TO THE SATISFACTION OF THE ENGINEER AT THE CONTRACTORS EXPENSE.
- 2) ALL HORIZONTAL CONTROLS ARE BASED ON MARYLAND STATE COORDINATES.
- 3) ALL VERTICAL CONTROLS ARE BASED ON U.S.G.S. DATA.
- 4) ALL PIPE ELEVATIONS ARE INVERT ELEVATIONS.
- 5) CLEAR ALL UTILITIES BY A MINIMUM OF 6". CLEAR ALL POLES BY 2'-0" MINIMUM OR TUNNEL AS REQUIRED. THE OWNER HAS CONTACTED THE UTILITY COMPANIES AND HAS MADE ARRANGEMENTS FOR BRACING OF POLES AS SHOWN ON THE DRAWINGS. IN THE EVENT THE CONTRACTORS WORK REQUIRES THE BRACING OF ADDITIONAL POLES, ANY COST INCURRED BY THE OWNER FOR THE BRACING OF ADDITIONAL POLES OR DAMAGES SHALL BE DEDUCTED FROM THE MONEY OWED THE CONTRACTOR. THE CONTRACTOR SHALL COORDINATE WITH THE UTILITY COMPANIES TO SCHEDULE THE BRACING OF POLES.
- 6) FOR DETAILS NOT SHOWN ON THE DRAWINGS, AND FOR MATERIALS AND CONSTRUCTION METHODS, USE HOWARD COUNTY DESIGN MANUAL, VOL. IV, STANDARD SPECIFICATIONS AND DETAILS FOR CONSTRUCTION. THE CONTRACTOR SHALL HAVE A COPY OF VOL. IV ON THE JOB.
- 7) WHERE TEST PITS HAVE BEEN MADE ON EXISTING UTILITIES, THEY ARE NOTED BY THE SYMBOL  AT THE LOCATION OF THE TEST PIT. A NOTE OR NOTES CONTAINING RESULTS OF THE TEST PITS IS INCLUDED ON THE DRAWINGS. EXISTING UTILITIES IN THE VICINITY OF THE PROPOSED WORK FOR WHICH TEST PITS HAVE NOT BEEN DUG SHALL BE LOCATED BY THE CONTRACTOR TWO WEEKS IN ADVANCE OF CONSTRUCTION OPERATIONS AT HIS OWN EXPENSE.
- 8) CONTRACTOR SHALL NOTIFY THE FOLLOWING UTILITIES OR AGENCIES AT LEAST FIVE WORKING DAYS BEFORE STARTING WORK SHOWN ON THESE PLANS: STATE HIGHWAY ADMINISTRATION 531-5533, BALTO. GAS & ELECTRIC CO., CONTRACTOR SERVICES 850-4626, BALTO. GAS AND ELECTRIC CO., UNDERGROUND DAMAGE CONTROL 859-9004, BALTO. GAS AND ELECTRIC CO., TROUBLE SHOOTING 298-9001, MISS UTILITY 1-559-0100, COLONIAL PIPELINE 795-1390 BUREAU OF UTILITIES, HOWARD CO. DEPT. OF PUBLIC WORKS 992-2366, C&P TELEPHONE 1-800-257-7777.
- 9) TREES AND SHRUBS ARE TO BE PROTECTED FROM DAMAGE TO MAXIMUM EXTENT. TREES AND SHRUBS LOCATED WITHIN THE CONSTRUCTION STRIP ARE NOT TO BE REMOVED OR DAMAGED BY THE CONTRACTOR.
- 10) CONTRACTOR SHALL REMOVE TREES, STUMPS AND ROOTS ALONG THE LINE OF EXCAVATION. PAYMENT FOR SUCH REMOVAL SHALL BE INCLUDED IN THE UNIT PRICE BID FOR CONSTRUCTION OF THE MAIN.
- 11) PLACE REGULATION "MEN WORKING" WARNING SIGNS AS REQUIRED TO COMPLY WITH MARYLAND STATE HIGHWAY ADMINISTRATIONS MANUAL FOR HIGHWAY CONSTRUCTION AND MAINTENANCE OPERATIONS.

PART II: WATER

- 1) ALL WATER MAINS TO BE D.I.P. UNLESS OTHERWISE NOTED.
- 2) TOPS OF ALL WATER MAINS TO HAVE A MINIMUM OF 3.5' COVER UNLESS OTHERWISE NOTED.
- 3) VALVES ADJACENT TO TEES SHALL BE STRAPPED TO TEES.
- 4) ALL FITTINGS SHALL BE BUTTRESSED OR ANCHORED WITH CONCRETE IN ACCORDANCE WITH THE STANDARD DETAILS UNLESS OTHERWISE PROVIDED ON THE DRAWINGS.
- 5) FIRE HYDRANTS SHALL BE SET TO THE BURY LINE ELEVATIONS SHOWN ON THE DRAWINGS. ALL FIRE HYDRANTS SHALL BE STRAPPED AND BUTTRESSED WITH CONCRETE IN ACCORDANCE WITH STANDARD DETAILS. SOIL AROUND THE FIRE HYDRANT SHALL BE COMPACTED IN ACCORDANCE WITH SECTION 1003 AND 1008 OF THE STANDARD SPECIFICATIONS.
- 6) THE CONTRACTOR SHALL NOT OPERATE ANY WATER MAIN VALVES ON THE EXISTING WATER SYSTEM.
- 7) ALL WATER HOUSE CONNECTIONS SHALL BE INSIDE METER SETTINGS UNLESS OTHERWISE NOTED.
- 8) ALL FIRE HYDRANTS TO BE SET THREE FEET BEHIND PROPOSED FACE OF CURB UNLESS NOTED OTHERWISE.
- 9) ALL WATER HOUSE CONNECTIONS SHALL COMPLY WITH HOWARD CO. STD. 3.21 AS SHOWN ON ARTICLE 40, SPECIAL PROVISIONS.
- 10) MINIMUM CRIMP RADIUS WILL BE SPECIFIED BY PIPE MANUFACTURER.
- 11) WATER MAINS AND WATER HOUSE CONNECTION LINES MUST BE PLACED SO AS TO HAVE AT LEAST ONE FOOT SEPARATION FROM THE SEWER MAIN OR SEWER HOUSE CONNECTION AS THEY PASS ABOUT IT.

PART III: SEWER

1. ALL SEWER MAINS SHALL BE 6" P.C.P., R.C.P., V.C.P., A.C.P. CLASS 2000 OR P.V.C. UNLESS OTHERWISE NOTED.
2. THE CONTRACTOR SHALL PROVIDE A JOINT IN ALL SEWER MAINS WITHIN 2'-0" OF EXTERIOR MANHOLE WALL.
3. ALL MANHOLES SHALL BE 4'-0" INSIDE DIAMETER UNLESS OTHERWISE NOTED.
4. MANHOLES SHOWN WITH 12" WALLS ARE BRICK MANHOLES ONLY.
5. MANHOLES DESIGNATED W.T. IN THE PLAN AND PROFILE SHALL HAVE WATERTIGHT FRAME AND COVERS, STANDARD DETAIL 6-552. WHERE WATERTIGHT FRAME AND COVER IS USED, SET TOP OF FRAME 1'-0" ABOVE FINISHED GRADE UNLESS NOTED ON DRAWINGS.
6. MANHOLES LOCATED WITHIN PROPOSED ROADWAY SHALL HAVE STANDARD HEAVY TRAFFIC MANHOLE FRAME AND COVER, STANDARD DETAIL 6-551.
7. THE CONTRACTOR SHALL ARRANGE TO HAVE THE EXISTING UNDERGROUND CABLE FIELD LOCATED PRIOR TO ANY EXCAVATION FOR THE SEWER MAIN.
8. THE SERVICE CLAMPS ARE TO HAVE STAINLESS STEEL STRAPS.



**LOCATION MAP: SCALE: 1"=600'**

TYPE OF BUILDING: OFFICE/WAREHOUSE  
 NUMBER OF LOTS: 1  
 NUMBER OF WATER H.C.: 2  
 NUMBER OF SEWER H.C.: 1  
 DRAINAGE AREA: DEEP RUN  
 WATER CODE: A-01  
 SEWER CODE: 2155511

**SEWER MARKS:**  
 G.N.S. B.M.#1: ELEV. 124.45 SOUTHWEST CORNER, W. 32426.00, IRON  
 P.I. SET # 124.45 (SOUTH HANOVER ROAD)  
 G.N.S. B.M.#2: ELEV. 112.21 SOUTHWEST CORNER, W. 32426.00, IRON  
 P.I. IN CURB # 240 F.S. (SOUTH HANOVER ROAD)  
 NOTE: COORDINATES SHOWN HEREON BASED ON PLAT ENTITLED "SECTION #2, A.G. PARROTT INDUSTRIAL PARK," RECORDED ALONG THE LAND RECORDS OF HOWARD COUNTY, MD. IN PLAT BOOK 10, FOLIO 30.

QUANTITIES			
ITEMS	ESTIMATED	AS BUILT	MATERIAL SUPPLIER
6" D.I.P.	42'	42'	U.S. DEPT. OF P.W. WORKS INC.
8" D.I.P.	415'	415'	" " " "
8" X 8" TAPPING SLEEVE	1	1	" " " "
8" X 6" TEE	2	2	" " " "
8" X 8" CROSS	1	1	" " " "
6" VALVE	2	2	U.S. PIPE & FOUNDRY WATERWORKS, INC.
8" VALVE	3	3	" " " "
8" CAP	1	1	U.S. PIPE & FOUNDRY
F.H.	2	2	U.S. PIPE & FOUNDRY
8" VIG BEND	1	1	U.S. PIPE & FOUNDRY
MANHOLE (SEWER)	1	1	BEAVER ROAD SUPPLY
8" SANITARY SEWER	10'	10'	CONCRETE PRODUCTS OF MD.

REVIEWED FOR HOWARD SOIL CONSERVATION DISTRICT AND MEETS TECHNICAL REQUIREMENTS.

THE DEVELOPMENT PLAN IS APPROVED FOR SOIL EROSION AND SEDIMENT CONTROL BY THE HOWARD SOIL CONSERVATION DISTRICT.

APPROVED: *John R. Robertson* 7/13/87  
 HOWARD SOIL CONSERVATION DISTRICT

SEDIMENT CONTROL MEASURES FOR THIS CONTRACT WILL BE IMPLEMENTED IN ACCORDANCE WITH SECTION 214 OF THE STANDARD SPECIFICATIONS AND SOP 01-101 & F-01-152.

**DEPARTMENT OF PUBLIC WORKS**  
 HOWARD COUNTY, MARYLAND

*Michael A. Hawkins* 7/13/87  
 CHIEF, BUREAU OF UTILITIES

*John R. Robertson* 7/13/87  
 CHIEF, BUREAU OF ENGINEERING

**ENGINEER**  
**GEORGE WM. STEPHENS JR.**  
 AND ASSOCIATES, INC.  
 303 ALLEGHENY AVENUE TOWSON, MD. 21204  
 (301) 825-8120

BY	NO	REVISION	DATE
J.W.		CORRECT QUANTITY BOX FOR 6" DIP	4/13/88

**TITLE SHEET**  
**GENERAL NOTES FOR WATER**

CONTRACT NO. 14-1008-D  
 BLOCK NO. 14

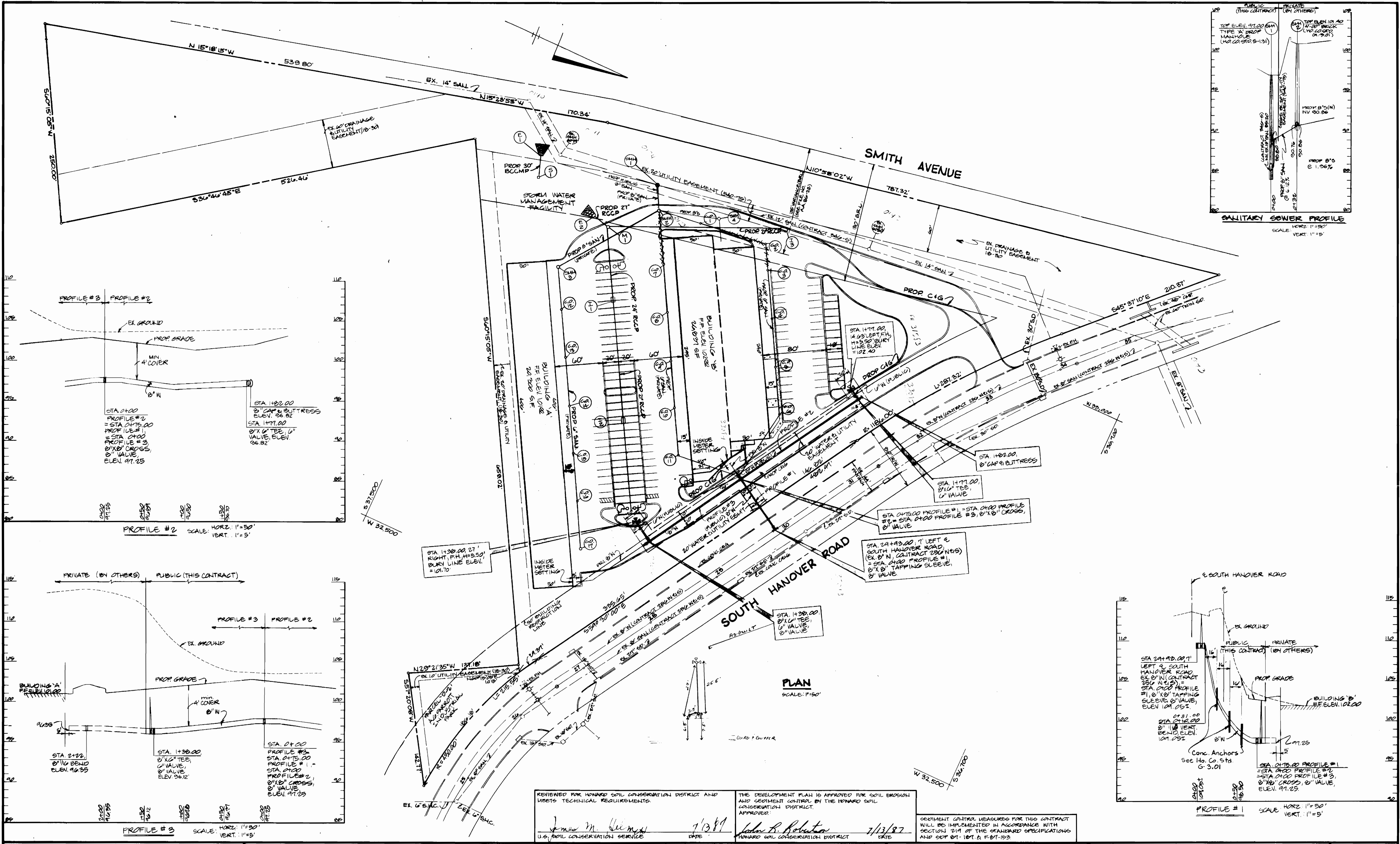
**SECTION #2**  
**A.G. PARROTT INDUSTRIAL PARK**  
 PARCEL "D-1"  
 A RECONFIGURATION OF PARCEL "D"

SCALE: AS SHOWN

SHEET NO. 1 OF 2

HOWARD CO., MD. ELECTION DIST. 1 APRIL 8, 1987





**DEPARTMENT OF PUBLIC WORKS**  
 HOWARD COUNTY, MARYLAND

*[Signature]* 7/20/87  
 DIRECTOR OF PUBLIC WORKS

*[Signature]* 7-15-87  
 CHIEF, BUREAU OF UTILITIES

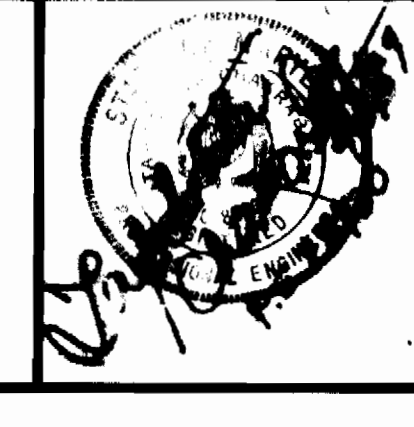
*[Signature]* 7/15/87  
 CHIEF, BUREAU OF ENGINEERING

*[Signature]* 7-15-87  
 CHIEF, LAND DEVELOPMENT DIVISION

**ENGINEER**

**GEORGE WM. STEPHENS JR.**  
 AND ASSOCIATES, INC.

303 ALLEGHENY AVENUE TOWSON, MD. 21204  
 (301) 825-8120



DESIGNED: W.Z.  
 DRAWN: B.N.J./C.A.H.  
 CHECKED: W.Z./P.R.C.  
 P.L. 9927

BY	NO	REVISION	DATE
J.W.		CORRECT BURY LINE LENGTH AND ELEV STA 1+28 AND STA 1+77 REV. BUILDING AND PARKING, REV. SAN. BETWEEN SMH 2 AND SAN. SMH 4 REV. PROFILE NO. 2, 3 AND 1 FOR 8" WATER MAIN, CORRECT SEWER PROFILE.	4/13/88

**PLAN AND PROFILE FOR PROPOSED WATER MAIN**

CONTRACT NO. 14-1008-D  
 100 SCALE MAP NO. 38 BLOCK NO. 14

**SECTION #2**  
**A.G. PARROTT INDUSTRIAL PARK**  
 PARCEL 'D-1'  
 A RESUBDIVISION OF PARCEL 'D'

SCALE: AS SHOWN

SHEET NO. 2 OF 2

HOWARD CO, MD  
 ELECTION DIST. 1  
 APRIL 8, 1987

REVIEWED FOR HOWARD SOIL CONSERVATION DISTRICT AND METS TECHNICAL REQUIREMENTS.

*[Signature]* 7/13/87  
 U.S. SOIL CONSERVATION SERVICE

THE DEVELOPMENT PLAN IS APPROVED FOR SOIL EROSION AND SEDIMENT CONTROL BY THE HOWARD SOIL CONSERVATION DISTRICT.

*[Signature]* 7/13/87  
 HOWARD SOIL CONSERVATION DISTRICT

SEDIMENT CONTROL MEASURES FOR THIS CONTRACT WILL BE IMPLEMENTED IN ACCORDANCE WITH SECTION 211 OF THE STANDARD SPECIFICATIONS AND SDP 87-187.2 F-87-183.