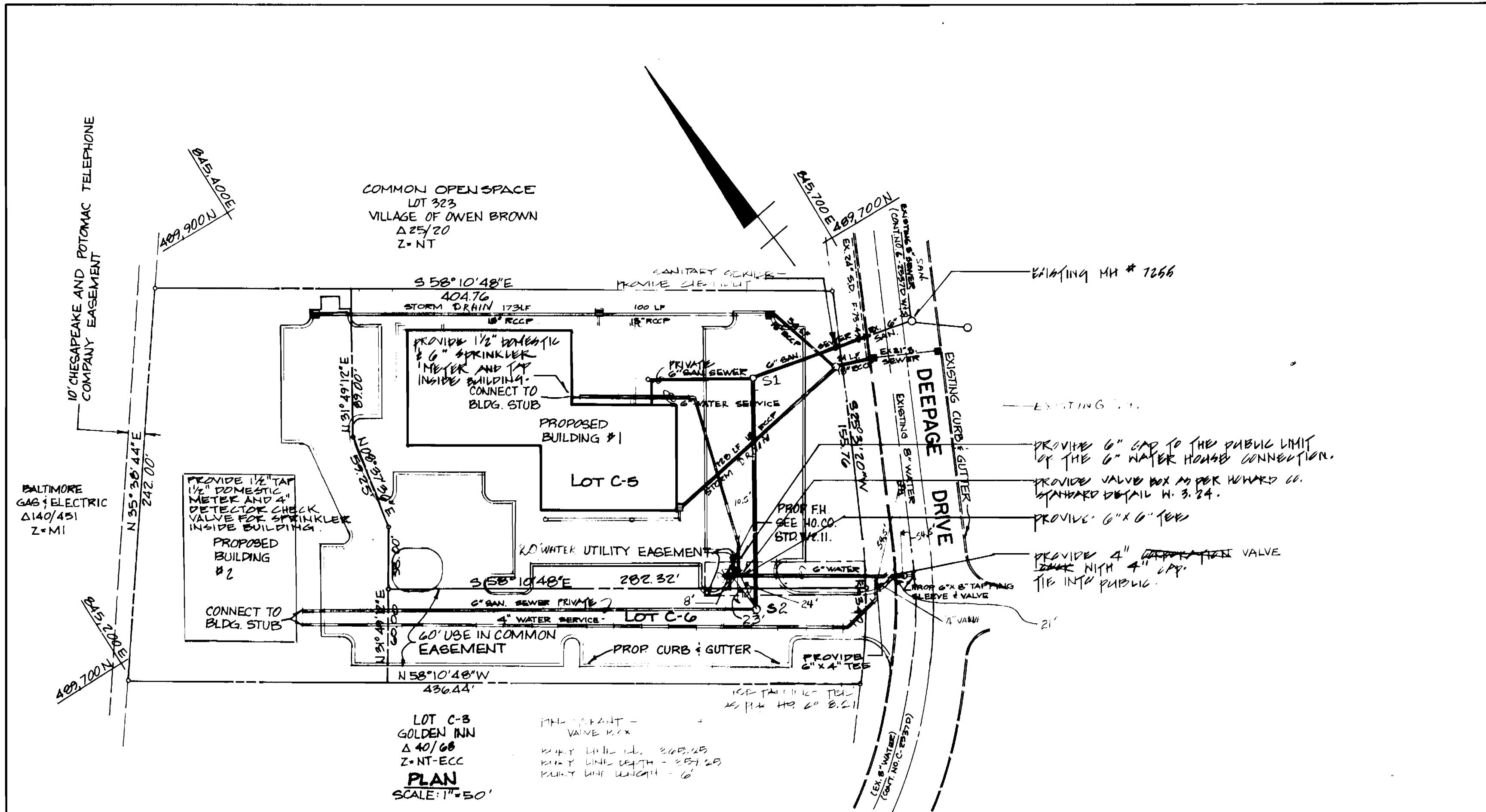


VICINITY MAP
SCALE: 1" = 600'

BENCH MARK DATA

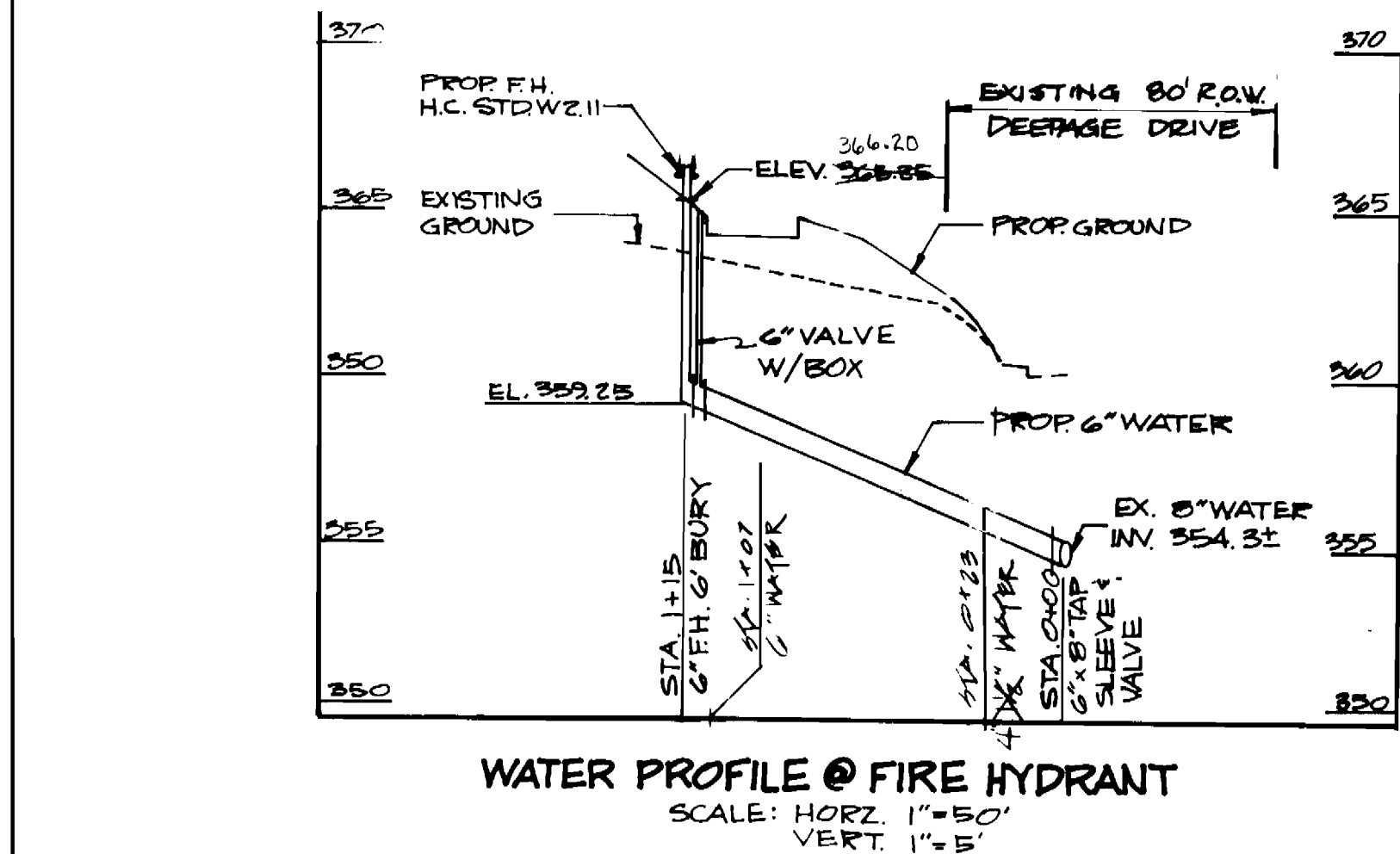
BM #1 ELEV 359.684
STA. 2341002
STATION IS LOCATED ON TRANSMISSION LINES HALFWAY BETWEEN THE CURB AND SIDEWALK ON THE SOUTHSIDE OF CARVED STONE ROAD



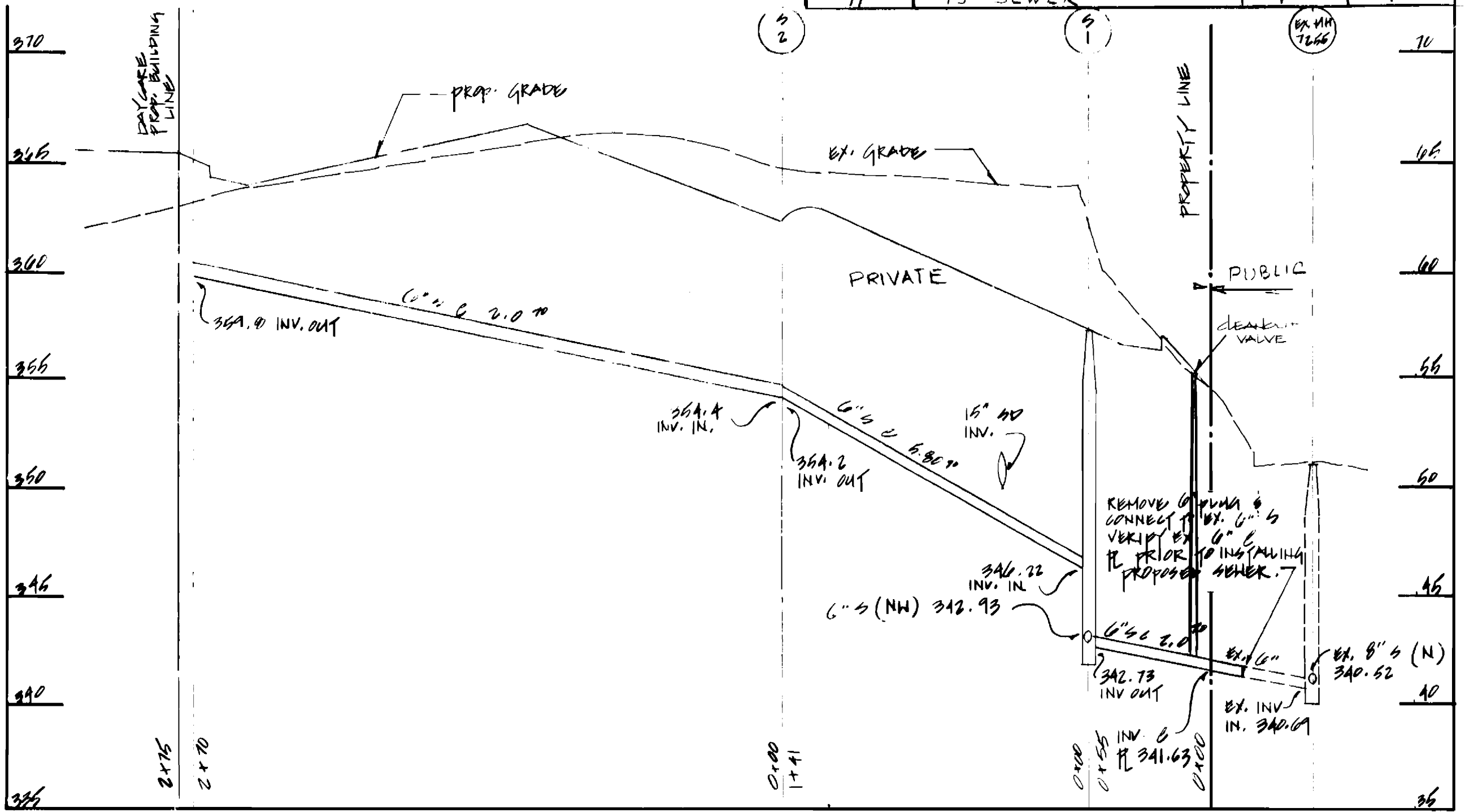
BILL OF MATERIALS				
QUANTITIES				
NO.	ITEMS	PROP.	AS BUILT	SUPPLIER
1	6" WATER	115	115	GRiffin PIPE PRODUCTS CO.
2	6" FH VALVE W/VALVE BOX	1	1	WATSON CO.
3	6" FH W/II	1	1	KENNEDY CO.
4	6" x 8" TAPPING SLEEVE & VALVE	1	1	WATSON CO.
5	6" x 8" Tee	1	1	WATSON CO.
6	4" DEPRESSURE VALVE	1	1	MURPHY CO.
7	6" CAP AT PUBLIC LIMIT	1	1	WATSON CO.
8	6" VALVE BOX W/3.24	1	1	WATSON CO.
9	4" CAP AT PUBLIC LIMIT	1	1	WATSON CO.
10	4" CAP AT PUBLIC LIMIT	1	1	WATSON CO.
11	15" SEWER	1	1	WATSON CO.

GENERAL NOTES

- APPROXIMATE LOCATION OF EXISTING UTILITIES ARE SHOWN. THE CONTRACTOR SHALL TAKE ALL NECESSARY PRECAUTIONS TO PROTECT EXISTING UTILITIES AND SERVICE AND TO MAINTAIN UNINTERRUPTED SERVICE. ANY DAMAGE INCURRED AT THE CONTRACTORS EXPENSE.
- ALL PIPE ELEVATION ARE INVERT ELEVATIONS.
- CONTRACTORS SHALL NOTIFY "MGS UTILITIES" (559-0100) AT LEAST 3 DAYS PRIOR TO BEGINNING ANY CONSTRUCTION SHOWN HEREON.
- FOR ALL STANDARD DETAILS SEE STANDARDS BOUND IN SPECIFICATIONS.
- CLEAR ALL UTILITIES BY A MINIMUM OF 6" CLEAR ALL POLES BY A MINIMUM OF 2'-0" OR TUNNEL AS REQUIRED. ANY COSTS INCURRED BY THE CONTRACTOR FOR TUNNELING OR BRACING POLES SHALL BE INCLUDED IN THE UNIT PRICE BID FOR EXCAVATION.
- ALL WATER LINES TO HAVE A MINIMUM OF 3'-6" COVER UNLESS OTHERWISE NOTED.
- BLOCK ALL FITTINGS WITH CONCRETE; STANDARDS BOUND IN SPECIFICATIONS.
- BURY LINE ELEVATIONS ON FIRE HYDRANTS SHALL BE SET TO THE ELEVATIONS SHOWN ON THE DRAWING SOIL AROUND HYDRANTS TO BE COMPACTED IN ACCORDANCE WITH SECTION 1003 OF THE STANDARD SPECIFICATION.
- ALL FIRE HYDRANTS SHALL BE STRAPPED TO THE TEE AND SHALL BE BUTTRESSED WITH CONCRETE IN ACCORDANCE WITH THE STANDARD DETAILS.
- ALL HORIZONTAL AND VERTICAL CONTROLS ARE BASE ON MD STATE DATUM.
- ALL WATER MAINS SHALL BE D.I.P UNLESS OTHERWISE NOTED.
- CONTRACTOR SHALL NOTIFY BALTIMORE GAS AND ELECTRIC FACILITIES BY CALLING 539-8000 EXT. 69
- TREES ARE TO BE PROTECTED FROM DAMAGE TO THE MAXIMUM EXTENT. ALL TREES LOCATED WITHIN THE CONSTRUCTION AREA NOT TO BE REMOVED OR DAMAGED BY THE CONTRACTOR.
- ALL VALVES SHALL BE STRAPPED TO TEES IN ACCORDANCE WITH STANDARD DETAILS.
- CONTRACTOR SHALL REMOVE TREES, STUMPS AND ROOTS ALONG LINE OF EXCAVATION AS DIRECTED BY THE ENGINEER. PAYMENT FOR SUCH REMOVAL SHALL BE INCLUDED IN THE UNIT PRICE BID FOR EXCAVATION AND BACKFILL FOR WATER MAINS.
- PLACE REGULATION "MEN WORKING" AND WARNING SIGNS AS REQUIRED TO COMPLY WITH MARYLAND STATE HIGHWAY ADMINISTRATION MANUAL OF TRAFFIC CONTROL FOR HIGHWAY CONSTRUCTION AND MAINTENANCE OPERATIONS.
- THE CONTRACTOR SHALL NOTIFY THE C+P TELEPHONE COMPANY PRIOR TO ANY CONSTRUCTION.
- SEDIMENT CONTROL SHALL BE ACCOMPLISHED IN ACCORDANCE WITH SITE DEVELOPMENT PLAN.
- EXCAVATED TRENCH MATERIAL SHALL BE PLACED ON THE UPSTREAM SIDE OF TRENCH.
- IMMEDIATELY FOLLOWING PIPE INSTALLATION, THE TRENCH SHALL BE BACKFILLED, COMPACTED, AND IMMEDIATELY STABILIZED (HAY, STRAW, SOBBED, OR SOBBED, MECHANICAL STABILIZATION) AT THE END OF EACH WORKING DAY.
- TEMPORARY STRAW BALE DICES SHALL BE PLACED IMMEDIATELY DOWN STREAM OF ANY DISTURBED AREA INTENDED TO REMAIN DISTURBED LONGER THAN ONE WORKING DAY 800-1.
- THE CONTRACTOR SHALL DIRTAP AND OPEN TRENCH THE MINIMUM PRACTICAL AREA REQUIRED TO ACCOMPLISH THE WORK DESIGNATED.
- VEGETATIVE STABILIZATION SHALL BE IN ACCORDANCE WITH THE STANDARDS AND SPECIFICATIONS FOR SOIL EROSION AND SEDIMENT CONTROL.
- WHEN RENOVATING TRENCHES, WATER SHALL BE DISCHARGED INTO APPROVED SEDIMENT TRAPPING DEVICES.
- THE MEASURES REQUIRED ON THE SITE SEDIMENT CONTROL PLAN SHALL APPLY AS SHOWN ON THIS PLAN AND SHALL BE COMPLETE AND IN SERVICE PRIOR TO CONSTRUCTION OF THE UTILITIES SHOWN ON THIS PLAN.



WATER PROFILE @ FIRE HYDRANT
SCALE: HORIZ. 1" = 50' VERT. 1" = 5'



SEWER PROFILE
SCALE: HORIZ. 1" = 50' VERT. 1" = 5' (BUILDING 2)

THIS DEVELOPMENT PLAN IS APPROVED FOR SOIL EROSION AND SEDIMENT CONTROL CONTROL BY THE HOWARD COUNTY SOIL CONSERVATION DISTRICT PLAT # 7033

APPROVED: [Signature] DATE: 6/22/87
HOWARD CO. SOIL CONSERVATION DISTRICT

REVIEWED FOR HOWARD SOIL CONSERVATION DISTRICT AND MEETS TECHNICAL REQUIREMENTS PLAT # 7033

APPROVED: [Signature] DATE: 6/22/87
U.S. SOIL CONSERVATION SERVICE

DEPARTMENT OF PUBLIC WORKS
HOWARD COUNTY, MARYLAND

Director of Public Works: [Signature] DATE: 7/20/87

Chief, Bureau of Utilities: [Signature] DATE: 7/10/87

Chief, Bureau of Engineering: [Signature] DATE: 7/20/87

Chief, Land Development Division: [Signature] DATE: 7/20/87

prepared by
THE RBA
ENGINEERS • ARCHITECTS • PLANNERS

5485 HARPER'S FARM ROAD, SUITE 200
COLUMBIA, MARYLAND 21044
301/730-7880 621-6050



DES: MAM	LD 1	REVIEWED AS PER COUNTY COMMENTS	
DRN: ETJ	LD 2	6/21/87	6/23/87
CHK: JMC		RED LINE REVISIONS 3/21/88	
DATE: 12/10/86	BY: NO.	REVISION	DATE

PLAN OF WATER MAIN
CONTRACT NO. 24-1660-D

600' SCALE MAP NO. 42 BLOCK NO. 4

Lots C-5 & C-6
VILLAGE OF OWEN BROWN
Section 2 Area 2
6th. Election District
Howard County, Md.
Tax Map 42 Par. 397

SCALE AS SHOWN
SHEET 1 OF 1