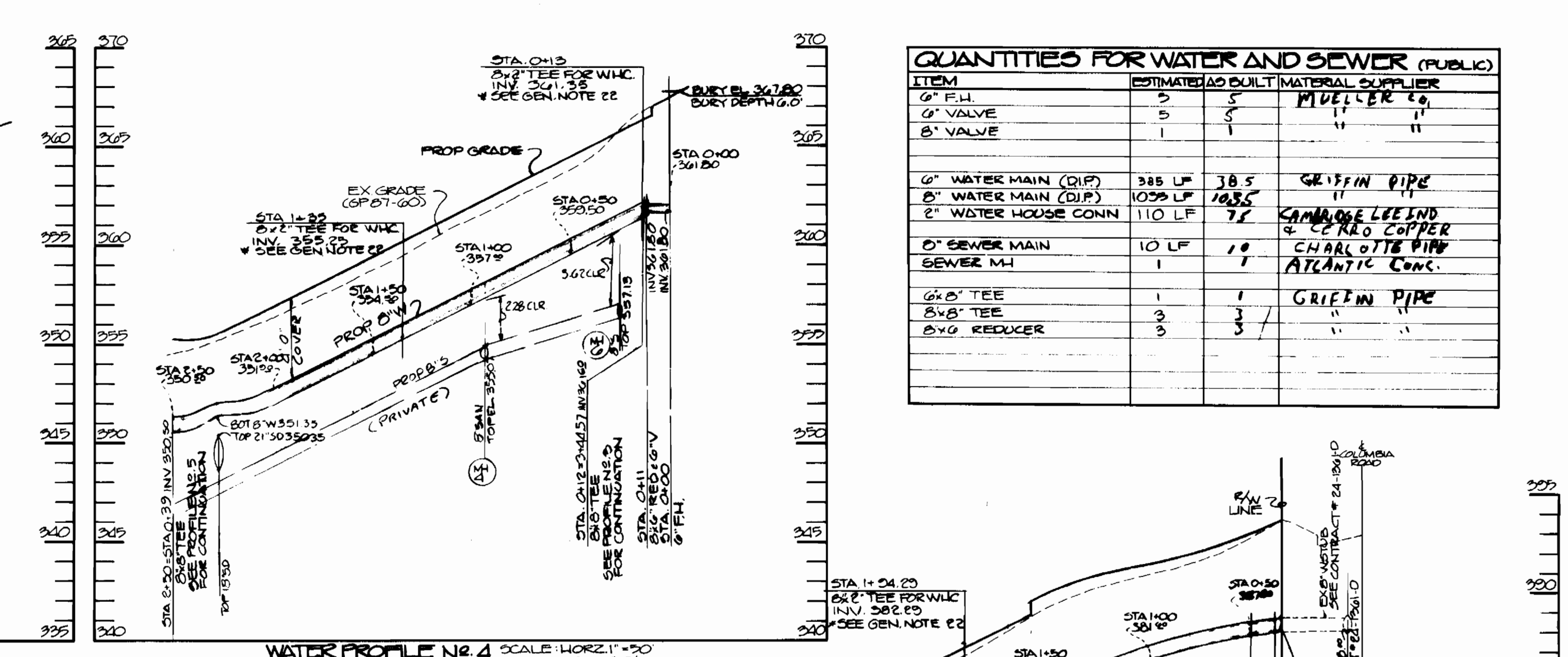
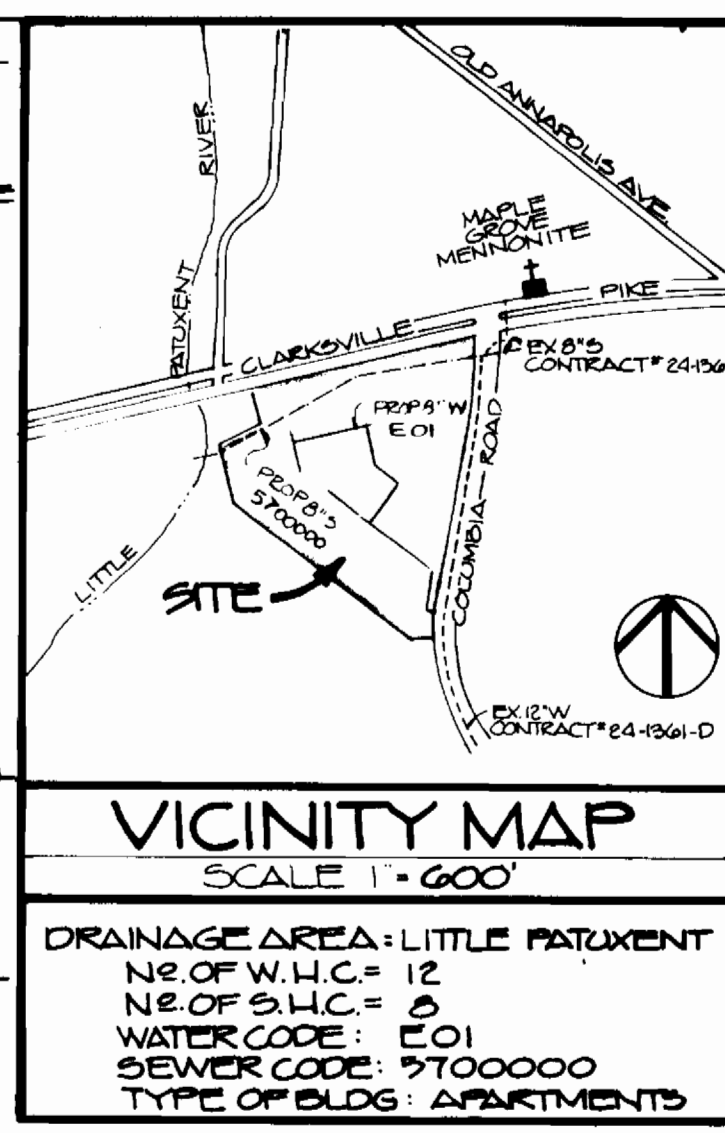


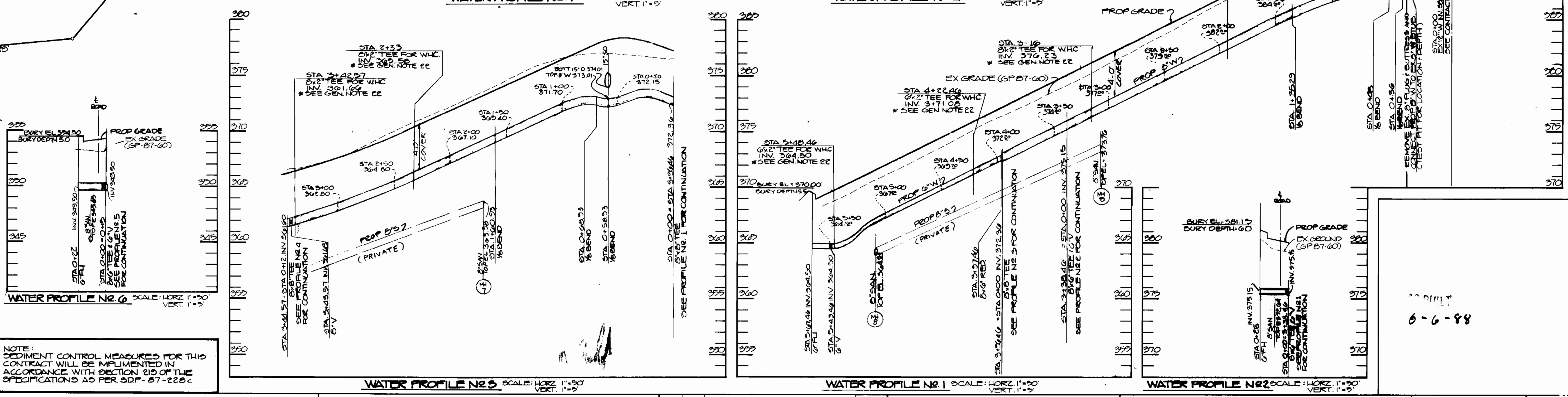
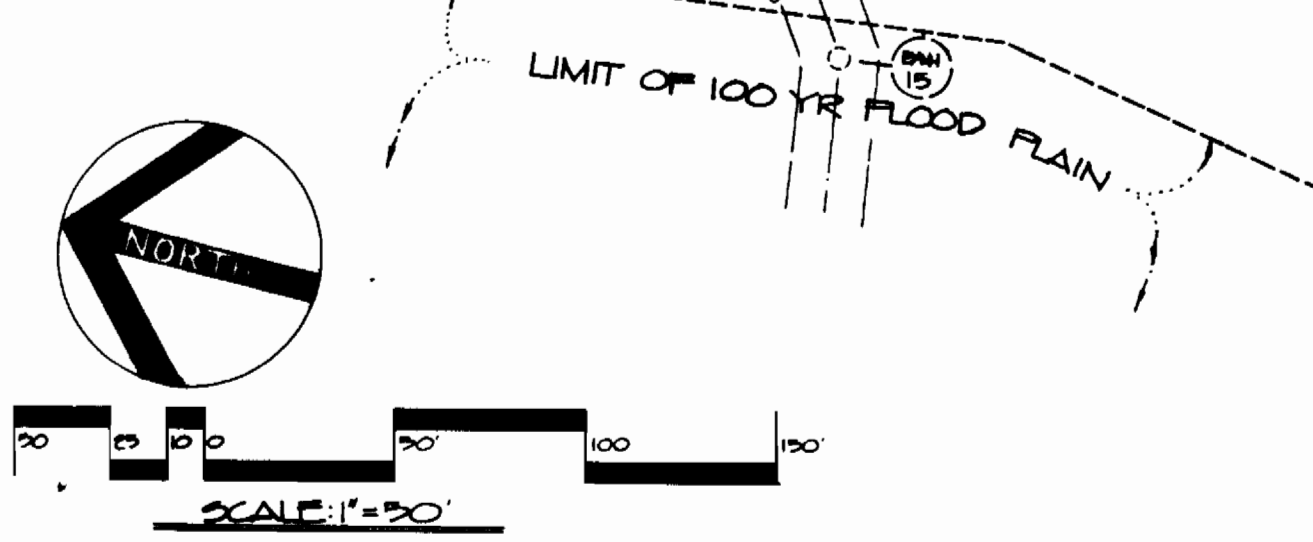
GENERAL NOTES FOR WATER AND SEWER (PUBLIC)

- EXISTING UTILITIES SHOWN HEREON ARE COMPILED FROM FIELD SURVEYS DATED APRIL 1986 AND FROM THE FOLLOWING CONTRACT DMS: WATER - CONTRACT NO. 24-1961-D; SANITARY SEWER - CONTRACT NO. 24-1961-D; STORM DRAIN AND ROAD - CONTRACT NO. 24-1961-D
- ALL HORIZONTAL CONTROL IS BASED ON THE MARYLAND STATE PLANE COORDINATE SYSTEM, HOWARD COUNTY STATIONS 2841001 THIRD EDITION. VERTICAL CONTROL IS BASED ON STATION 2841001 ELEVATION 406.876
- THE LOCATION OF EXISTING UNDERGROUND UTILITIES IS TAKEN FROM THE REFERENCED CONTRACT DMS AND IS APPROXIMATE. THE CONTRACTOR SHALL TAKE ALL NECESSARY PRECAUTIONS TO PROTECT EXISTING WATER MAINS, SANITARY SEWERS, AND STORM DRAINS FROM DAMAGE AND TO PROVIDE FOR UNINTERRUPTED SERVICE. ANY DAMAGE INCURRED SHALL BE REPAIRED IMMEDIATELY TO THE SATISFACTION OF THE ENGINEER AT THE EXPENSE AND LIABILITY OF THE CONTRACTOR. EXISTING UTILITIES IN VICINITY OF THE PROPOSED WORK SHALL BE LOCATED BY TEST FITS TWO WEEKS PRIOR TO CONSTRUCTION AT HIS OWN EXPENSE.
- THE CONTRACTOR SHALL NOTIFY THE FOLLOWING UTILITIES OR AGENCIES AT LEAST FIVE WORKING DAYS BEFORE STARTING WORK SHOWN ON THESE PLANS.
 - BALTIMORE GAS AND ELECTRIC COMPANY
 - CONTRACTOR SERVICES 941-2989
 - UNDERGROUND DAMAGE CONTROL 254-3621
 - TROUBLE SHOOTING 252-3019
 - MISS UTILITY 1-992-0100
 - HOWARD CO. DEPT. OF PUBLIC WORKS, BUREAU OF UTILITIES 902-2366
- FOR DETAILS NOT SHOWN ON THE DRAWING AND FOR MATERIALS AND CONSTRUCTION METHODS, SEE HOWARD COUNTY DESIGN MANUAL VOLUME 12, STANDARD SPECIFICATIONS AND DETAILS FOR DESIGN AND CONSTRUCTION. THE CONTRACTOR SHALL MAINTAIN A COPY OF VOLUME 12 ON THE JOB SITE.
- THE CONTRACTOR SHALL REMOVE ALL TREES, STUMPS AND ROOTS ALONG LINE OF EXCAVATION AS DIRECTED BY THE ENGINEER. PAYMENT FOR SUCH REMOVAL SHALL BE INCLUDED IN THE PRICE BID FOR EXCAVATION AND BACKFILL.
- ALL PIPE ELEVATIONS SHOWN ARE INVERT ELEVATIONS.
- ALL WATER MAINS SHALL BE D.I.P. CLASS B UNLESS OTHERWISE NOTED.
- TOP OF ALL WATER MAINS SHALL HAVE A MINIMUM OF 5/8 FEET OF COVER UNLESS OTHERWISE NOTED.
- VALVES ADJACENT TO TEES SHALL BE STRAPPED TO TEES.
- BLOCK ALL FITTINGS WITH CONCRETE IN ACCORDANCE WITH STANDARD DETAILS.
- FIRE HYDRANTS SHALL BE SET TO EXISTING ELEVATIONS SHOWN ON DRAWINGS. FIRE HYDRANTS SHALL BE STRAPPED AND BUTTRESSED IN ACCORDANCE WITH STANDARD DETAILS. SOIL AROUND FIRE HYDRANTS SHALL BE COMPACTED IN ACCORDANCE WITH SECTION 1009 AND 1008 OF THE STANDARD SPECIFICATIONS.
- THE CONTRACTOR SHALL NOT OPERATE ANY WATER MAIN VALVES ON THE EXISTING SYSTEM.
- WATER HOUSE CONNECTIONS SHALL BE FOR INSIDE METER SETTINGS CURB SERVICE BOX.
- WATER MAINS AND WATER HOUSE CONNECTION LINES SHALL BE PLACED 20 FEET WIDE AT LEAST ONE (1) FOOT SEPARATION FROM THE SEWER MAIN OR SEWER HOUSE CONNECTION AS THEY PASS ABOUT.
- ALL SEWER MAINS SHALL BE C.S.P., R.C.S.P., V.C.P., A.C.P. CLASS 2400 OR P.V.C. (UNLESS OTHERWISE NOTED).
- THE CONTRACTOR SHALL PROVIDE A JOINT IN ALL SEWER MAINS WITHIN 2'-0" OF EXTERIOR MANHOLE WALL.
- MANHOLES LOCATED WITHIN PROPOSED ROADWAY SHALL HAVE STANDARD HEAVY TRAFFIC MANHOLE FRAME & COVER.
- ALL MANHOLES SHALL BE 4'-0" INSIDE DIAMETER UNLESS OTHERWISE NOTED.
- SERVICE CLAMPS ARE TO HAVE STAINLESS STEEL STRAPS.
- ALL 2" HOUSE CONNECTION IS TO BE LAID LEVEL FROM WATER MAIN TO LIMIT OF 20' DRAINAGE AND UTILITY EASEMENT FOR PUBLIC WATER, AS PART OF PUBLIC CONTRACT.
- ALL WATER HOUSE CONNECTIONS REQUIRE 2" METER SETS, METERS ARE TO BE LOCATED INSIDE OF BUILDING.



QUANTITIES FOR WATER AND SEWER (PUBLIC)

ITEM	ESTIMATE	ADJUSTED	MATERIAL SUPPLIER
6" F.H.	5	5	MULLER CO.
6" VALVE	1	1	"
8" VALVE	1	1	"
6" WATER MAIN (D.I.P.)	385 LF	385	GRIFFIN PIPE
8" WATER MAIN (D.I.P.)	1039 LF	1039	"
2" WATER HOUSE CONN.	110 LF	77	CAMBRIDGE LEAD & CHARLOTTE COPPER
6" SEWER MAIN	10 LF	10	ATLANTIC CONC.
SEWER MH	1	1	"
6x8" TEE	1	1	GRIFFIN PIPE
8x8" TEE	3	3	"
8x6" REDUCER	3	3	"



THIS DEVELOPMENT PLAN IS APPROVED FOR EROSION AND SEDIMENT CONTROL BY THE HOWARD SOIL CONSERVATION DISTRICT.
S.D.P. 87-228 c

APPROVED: *Stephen L. Shuler* 9/10/87 DATE
HOWARD SOIL CONSERVATION DISTRICT

REVIEWED FOR HOWARD COUNTY SOIL CONSERVATION DISTRICT AND MEETS TECHNICAL REQUIREMENTS.
S.D.P. 87-228 c

APPROVED: *James M. Sch* 9-10-87 DATE
US SOIL CONSERVATION DISTRICT

DEPARTMENT OF PUBLIC WORKS
HOWARD COUNTY, MD.

ENGINEER: D.S. THALER & ASSOCIATES, INC.
11 WARREN ROAD
BALTIMORE, MARYLAND
21208
(301) 484-4100

OWNER/DEVELOPER: HEATHERFIELD JOINT VENTURE
A JOINT VENTURE BETWEEN MORRIS MILL, INC. & HEATHERFIELD INC.
10715 CHARTERS DRIVE
COLUMBIA, MARYLAND 21044
(301) 730-4240 (MR. GERALD J. RYAN)

PLAN & PROFILES
PUBLIC WATER & SEWER
CONTRACT NO. 24-1992-D

PUBLIC WATER & SEWER, PLAN & PROFILES
PARCEL "G"
VILLAGE OF DORSEY'S SEARCH
SECTION 3, AREA 1
PLAT NO. 0939
5TH ELECTION DISTRICT, HOWARD COUNTY MD
DATE: 2 SEPT. 1987

SCALE: AS SHOWN
SHEET 10F2
T.W.H. RAG

